

**June 2014
FY 2013-2014
SB94 JDSAG SUPPLEMENTAL REPORT**

Prepared by the Division of Youth Corrections (DYC)
Research and Evaluation Unit
July 25, 2014



COLORADO

**Office of Children,
Youth & Families**

Division of Youth Corrections

June 2014 SB94 Supplemental Report

DYC Commitment ADP & New Commitments by Judicial District

Region	JD ¹	2014 Population Estimates ²	ADP ³		New Commitments		
			June 2014	YTD	June 2014	YTD	YTD Rate ⁴
<i>Central Region</i>							
	1st	54,420	74.7	86.3	3	41	7.5
	2nd	54,223	159.6	145.8	11	88	16.2
	5th	9,803	6.1	5.8	0	5	5.1
	18th	113,831	103.9	111.8	4	56	4.9
Central Total		232,277	344.2	349.7	18	190	8.2
<i>Northeast Region</i>							
	8th	30,124	37.7	39.0	5	35	11.6
	13th	8,501	16.1	17.0	0	12	14.1
	17th	65,065	77.6	77.1	5	49	7.5
	19th	33,054	44.8	48.1	4	38	11.5
	20th	30,317	13.9	14.1	0	8	2.6
Northeast Total		167,061	190.1	195.2	14	142	8.5
<i>Southern Region</i>							
	3rd	1,969	2.0	0.6	0	2	10.2
	4th	79,311	113.0	108.5	6	65	8.2
	10th	17,771	25.8	24.7	2	17	9.6
	11th	7,372	9.0	8.0	0	6	8.1
	12th	5,147	9.0	9.3	1	4	7.8
	15th	2,200	3.6	3.4	0	3	13.6
	16th	2,961	3.7	2.9	1	3	10.1
Southern Total		116,731	166.1	157.3	10	100	8.6
<i>Western Region</i>							
	6th	6,353	11.6	14.5	1	7	11.0
	7th	10,724	12.0	17.3	0	7	6.5
	9th	9,331	12.0	11.5	0	7	7.5
	14th	5,510	1.8	3.8	0	1	1.8
	21st	15,229	28.8	37.6	2	15	9.8
	22nd	3,024	9.9	10.5	0	5	16.5
Western Total		50,171	76.0	95.2	3	42	8.4
Statewide Total		566,240	776.4	797.4	45	474	8.4

¹ JD represents the judicial district in which the client was committed. Regional totals are a sum of their respective judicial districts. Regional totals reported here may differ slightly from those reported in the Monthly Population Report, where region is defined by active caseloads.

² Source: DOLA 2014 Estimates

³ Due to rounding, totals shown may not be an exact sum of the subtotals.

⁴ Per 10,000 youth in the population

June 2014 SB94 Supplemental Report

DYC Detention ADP and New Detention Admissions by Judicial District

Region	JD	2014 Population Estimates ¹	ADP		New Admits		
			June 2014	YTD	June 2014	YTD	YTD New Admit Rate ²
<i>Central Region</i>							
	1st	54,420	20.0	24.1	54	682	125.3
	2nd	54,223	48.7	57.4	64	1,110	204.7
	5th	9,803	3.7	3.3	4	49	50.0
	18th	113,831	51.2	47.0	94	1,239	108.8
Central Total		232,277	123.7	131.8	216	3,080	132.6
<i>Northeast Region</i>							
	8th	30,124	16.2	14.1	32	355	117.8
	13th	8,501	2.4	4.6	0	77	90.6
	17th	65,065	26.3	23.1	43	484	74.4
	19th	33,054	26.2	23.7	51	607	183.6
	20th	30,317	4.9	6.5	20	294	97.0
Northeast Total		167,061	76.0	71.9	146	1,817	108.8
<i>Southern Region</i>							
	3rd	1,969	0.7	0.7	2	29	147.3
	4th	79,311	38.1	41.7	56	851	107.3
	10th	17,771	14.0	12.1	32	316	177.8
	11th	7,372	3.9	4.5	9	110	149.2
	12th	5,147	1.9	2.1	2	57	110.7
	15th	2,200	1.7	2.5	2	42	190.9
	16th	2,961	1.4	1.8	6	62	209.4
Southern Total		116,731	61.6	65.5	109	1,467	125.7
<i>Western Region</i>							
	6th	6,353	1.4	2.7	4	43	67.7
	7th	10,724	1.0	3.3	4	75	69.9
	9th	9,331	0.8	2.2	2	53	56.8
	14th	5,510	0.4	0.6	2	15	27.2
	21st	15,229	11.6	10.0	12	212	139.2
	22nd	3,024	1.0	1.5	3	22	72.8
Western Total		50,171	16.1	20.2	27	420	83.7
<i>Missing JD or Multiple JDs</i>			<i>0.6</i>	<i>1.2</i>			
Statewide Total		566,240	278.0	290.6	498	6,784	119.8

¹ Source: DOLA 2014 Estimates

² Per 10,000 youth in the population

June 2014 SB94 Supplemental Report

DYC Detention LOS by Judicial District				
Region	JD	YTD Detention Releases	YTD LOS (days)	LOS (days) Compared to State AVG
<i>Central Region</i>				
	1st	678	11.3	-4.2
	2nd	1,106	18.2	2.7
	5th	49	24.1	8.6
	18th	1,228	14.1	-1.3
Central Total		3,061	15.1	-0.3
<i>Northeast Region</i>				
	8th	355	13.6	-1.8
	13th	80	20.4	5.0
	17th	478	16.3	0.9
	19th	602	13.3	-2.1
	20th	301	7.5	-7.9
Northeast Total		1,816	13.5	-1.9
<i>Southern Region</i>				
	3rd	31	9.1	-6.3
	4th	853	17.4	2.0
	10th	313	10.1	-5.3
	11th	118	14.0	-1.4
	12th	57	13.5	-1.9
	15th	41	26.9	11.5
	16th	62	10.3	-5.1
Southern Total		1,475	15.3	-0.2
<i>Western Region</i>				
	6th	45	23.8	8.4
	7th	73	14.7	-0.7
	9th	52	12.3	-3.2
	14th	15	14.3	-1.1
	21st	207	15.3	-0.2
	22nd	24	23.4	8.0
Western Total		416	16.1	0.7
Statewide Total		6,790	15.4	-

June 2014 SB 94 Supplemental Report

YTD DYC Detention ADP & Ethnicity by Judicial District

Region	JD	Anglo-American		African-American		Hispanic / Latino		Native-American		Asian-American		Other		TOTAL	
		ADP	%	ADP	%	ADP	%	ADP	%	ADP	%	ADP	%	ADP	%
Central															
	1st	13.8	57.2%	1.4	5.8%	7.6	31.7%	0.1	0.6%	1.1	4.6%	0.0	0.1%	24.1	100%
	2nd	3.1	5.5%	22.6	39.3%	30.5	53.1%	0.2	0.4%	0.5	0.9%	0.5	0.9%	57.4	100%
	5th	1.5	45.4%	0.0	0.5%	1.8	54.1%	0.0	0.0%	0.0	0.0%	0.0	0.0%	3.3	100%
	18th	19.3	41.1%	16.5	35.2%	10.0	21.3%	0.5	1.1%	0.4	0.8%	0.2	0.5%	47.0	100%
Central Total		37.7	37.3%	40.5	20.2%	49.9	40.0%	0.9	0.5%	2.0	1.6%	0.7	0.4%	131.8	100%
Northeast															
	8th	8.6	60.9%	0.6	4.2%	4.7	33.6%	0.0	0.1%	0.0	0.0%	0.2	1.2%	14.1	100%
	13th	2.3	49.2%	0.3	7.3%	1.8	39.9%	0.1	1.6%	0.0	0.0%	0.1	2.0%	4.6	100%
	17th	6.2	27.0%	3.3	14.2%	13.1	56.3%	0.3	1.2%	0.0	0.2%	0.2	0.9%	23.1	100%
	19th	5.3	22.3%	0.4	1.8%	17.8	75.0%	0.0	0.0%	0.0	0.1%	0.2	0.7%	23.7	100%
	20th	3.8	59.0%	0.3	4.2%	2.3	35.6%	0.0	0.2%	0.0	0.0%	0.1	1.0%	6.5	100%
Northeast Total		26.2	43.7%	4.9	6.3%	39.7	48.1%	0.4	0.6%	0.1	0.1%	0.7	1.2%	71.9	100%
Southern															
	3rd	0.1	7.3%	0.0	0.0%	0.7	93%	0.0	0.0%	0.0	0.0%	0.0	0.0%	0.7	100%
	4th	16.0	38.3%	11.3	27.2%	12.1	29.0%	1.5	3.5%	0.1	0.2%	0.7	1.8%	41.7	100%
	10th	4.6	37.9%	0.4	2.9%	6.2	51.4%	0.0	0.3%	0.0	0.0%	0.9	7.5%	12.1	100%
	11th	3.8	84.3%	0.3	7.3%	0.2	4.2%	0.2	3.3%	0.0	0.2%	0.0	0.7%	4.5	100%
	12th	0.9	42.6%	0.0	0.7%	1.0	49.1%	0.0	0.0%	0.0	0.0%	0.2	7.6%	2.1	100%
	15th	1.8	70.9%	0.1	3.2%	0.6	23.6%	0.1	2.3%	0.0	0.0%	0.0	0.0%	2.5	100%
	16th	0.4	25.3%	0.0	0.0%	1.3	74.2%	0.0	0.4%	0.0	0.0%	0.0	0.0%	1.8	100%
Southern Total		27.6	43.8%	12.1	5.9%	22.1	46.3%	1.7	1.4%	0.1	0.1%	1.8	2.5%	65.5	100%
Western															
	6th	1.5	55.7%	0.0	0.0%	0.0	1.7%	0.1	4.9%	0.0	0.0%	1.0	37.6%	2.7	100%
	7th	2.4	72.4%	0.0	0.0%	0.9	27.6%	0.0	0.0%	0.0	0.0%	0.0	0.0%	3.3	100%
	9th	1.1	48.0%	0.0	0.0%	1.2	52.0%	0.0	0.0%	0.0	0.0%	0.0	0.0%	2.2	100%
	14th	0.5	93%	0.0	0.0%	0.0	7.0%	0.0	0.0%	0.0	0.0%	0.0	0.0%	0.6	100%
	21st	6.7	67.4%	0.1	1.0%	3.1	31.6%	0.0	0.0%	0.0	0.0%	0.0	0.1%	10.0	100%
	22nd	1.0	69.3%	0.0	0.0%	0.0	2.0%	0.2	14.2%	0.0	0.0%	0.2	14.6%	1.5	100%
Western Total		13.2	67.6%	0.1	0.2%	5.3	20.3%	0.3	3.2%	0.0	0.0%	1.2	8.7%	20.2	100%
Missing JD Data		0.3		0.2		0.8		0.0		0.0		0.0		1.2	
Statewide Total		105.0	36.1%	57.8	19.9%	117.8	40.5%	3.4	1.2%	2.1	0.7%	4.5	1.6%	290.6	100%

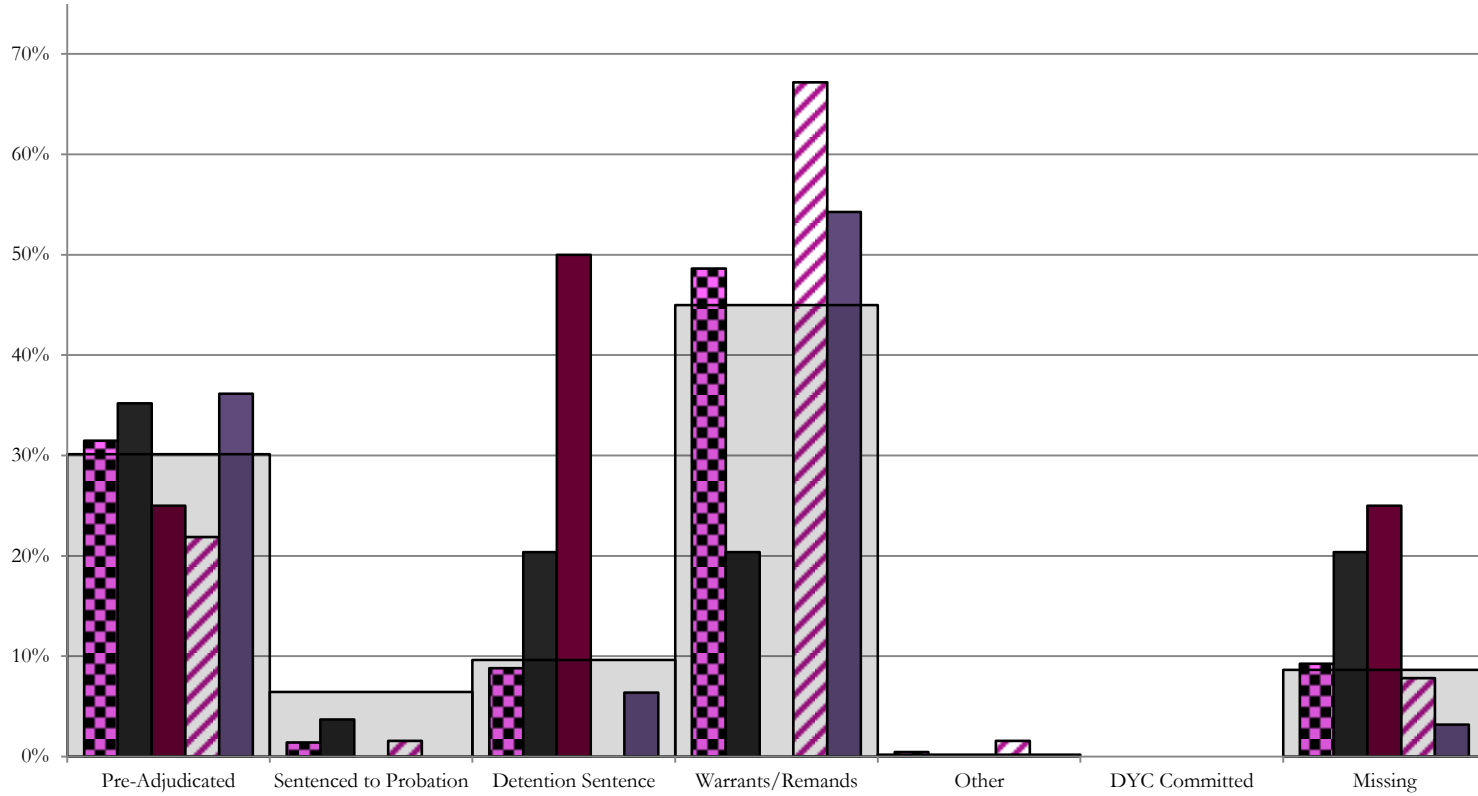
June 2014
SB94 JDSAG Supplemental Report

SB94 Reason Detained (RD) by Judicial District

Region	JD	Monthly New Admits	Pre-Adjudicated				Probation Hold				Detention Sentence				Warrants/Remands				Other				DYC Committed				Missing	
			Felony		Misdemeanor		Technical Violator		New Charges		Detention Sentence (up to 45 days)		Valid Court Order (VCO) Truancy		Failure to Appear (FTA)		Failure to Comply (FTC)		Interstate Compact on Juveniles (ICJ) Hold		Immigration Hold		Institutional		Parole		Missing	
			#	%	#	%	#	%	#	%	#	%	#	%	#	%	#	%	#	%	#	%	#	%	#	%	#	%
<i>Central Region</i>																												
	1st	54	13	24.1%	6	11.1%	2	3.7%	0	0.0%	11	20.4%	0	0.0%	1	1.9%	10	18.5%	0	0.0%	0	0.0%	0	0.0%	0	0.0%	11	20.4%
	2nd	64	11	17.2%	3	4.7%	1	1.6%	0	0.0%	0	0.0%	0	0.0%	6	9.4%	37	57.8%	1	1.6%	0	0.0%	0	0.0%	0	0.0%	5	7.8%
	5th	4	1	25.0%	0	0.0%	0	0.0%	0	0.0%	2	50.0%	0	0.0%	0	0.0%	0	0.0%	0	0.0%	0	0.0%	0	0.0%	0	0.0%	1	25.0%
	18th	94	20	21.3%	14	14.9%	0	0.0%	0	0.0%	5	5.3%	1	1.1%	7	7.4%	44	46.8%	0	0.0%	0	0.0%	0	0.0%	0	0.0%	3	3.2%
Central Total		216	45	20.8%	23	10.6%	3	1.4%	0	0.0%	18	8.3%	1	0.5%	14	6.5%	91	42.1%	1	0.5%	0	0.0%	0	0.0%	0	0.0%	20	9.3%
<i>Northeast Region</i>																												
	8th	32	1	3.1%	4	12.5%	0	0.0%	0	0.0%	0	0.0%	0	0.0%	5	15.6%	13	40.6%	0	0.0%	0	0.0%	0	0.0%	0	0.0%	9	28.1%
	13th	0	0	#####	0	#####	0	#####	0	#####	0	#####	0	#####	0	#####	0	#####	0	#####	0	#####	0	#####	0	#####	0	#####
	17th	43	9	20.9%	9	20.9%	0	0.0%	0	0.0%	0	0.0%	0	0.0%	2	4.7%	20	46.5%	0	0.0%	0	0.0%	0	0.0%	0	0.0%	4	9.3%
	19th	51	9	17.6%	5	9.8%	14	27.5%	4	7.8%	3	5.9%	2	3.9%	4	7.8%	8	15.7%	0	0.0%	0	0.0%	0	0.0%	0	0.0%	2	3.9%
	20th	20	5	25.0%	4	20.0%	6	30.0%	0	0.0%	0	0.0%	0	0.0%	0	0.0%	5	25.0%	0	0.0%	0	0.0%	0	0.0%	0	0.0%	0	0.0%
Northeast Total		146	24	16.4%	22	15.1%	20	13.7%	4	2.7%	3	2.1%	2	1.4%	11	7.5%	46	31.5%	0	0.0%	0	0.0%	0	0.0%	0	0.0%	14	9.6%
<i>Southern Region</i>																												
	3rd	2	0	0.0%	0	0.0%	0	0.0%	0	0.0%	0	0.0%	0	0.0%	0	0.0%	1	50.0%	0	0.0%	0	0.0%	0	0.0%	0	0.0%	1	50.0%
	4th	56	18	32.1%	3	5.4%	1	1.8%	2	3.6%	1	1.8%	0	0.0%	8	14.3%	22	39.3%	0	0.0%	0	0.0%	0	0.0%	0	0.0%	1	1.8%
	10th	32	5	15.6%	1	3.1%	0	0.0%	0	0.0%	16	50.0%	0	0.0%	5	15.6%	5	15.6%	0	0.0%	0	0.0%	0	0.0%	0	0.0%	0	0.0%
	11th	9	1	11.1%	1	11.1%	0	0.0%	0	0.0%	1	11.1%	0	0.0%	0	0.0%	5	55.6%	0	0.0%	0	0.0%	0	0.0%	0	0.0%	1	11.1%
	12th	2	0	0.0%	2	100.0%	0	0.0%	0	0.0%	0	0.0%	0	0.0%	0	0.0%	0	0.0%	0	0.0%	0	0.0%	0	0.0%	0	0.0%	0	0.0%
	15th	2	0	0.0%	0	0.0%	0	0.0%	0	0.0%	2	100.0%	0	0.0%	0	0.0%	0	0.0%	0	0.0%	0	0.0%	0	0.0%	0	0.0%	0	0.0%
	16th	6	0	0.0%	0	0.0%	0	0.0%	0	0.0%	1	16.7%	0	0.0%	1	16.7%	1	16.7%	0	0.0%	0	0.0%	0	0.0%	0	0.0%	3	50.0%
Southern Total		109	24	22.0%	7	6.4%	1	0.9%	2	1.8%	21	19.3%	0	0.0%	14	12.8%	34	31.2%	0	0.0%	0	0.0%	0	0.0%	0	0.0%	6	5.5%
<i>Western Region</i>																												
	6th	4	0	0.0%	0	0.0%	0	0.0%	0	0.0%	0	0.0%	0	0.0%	0	0.0%	2	50.0%	0	0.0%	0	0.0%	0	0.0%	0	0.0%	2	50.0%
	7th	4	0	0.0%	0	0.0%	0	0.0%	0	0.0%	1	25.0%	0	0.0%	0	0.0%	3	75.0%	0	0.0%	0	0.0%	0	0.0%	0	0.0%	0	0.0%
	9th	2	0	0.0%	0	0.0%	1	50.0%	0	0.0%	1	50.0%	0	0.0%	0	0.0%	0	0.0%	0	0.0%	0	0.0%	0	0.0%	0	0.0%	0	0.0%
	14th	2	0	0.0%	0	0.0%	1	50.0%	0	0.0%	0	0.0%	0	0.0%	0	0.0%	1	50.0%	0	0.0%	0	0.0%	0	0.0%	0	0.0%	0	0.0%
	21st	12	2	16.7%	1	8.3%	0	0.0%	0	0.0%	1	8.3%	0	0.0%	1	8.3%	6	50.0%	0	0.0%	0	0.0%	0	0.0%	0	0.0%	1	8.3%
	22nd	3	0	0.0%	2	66.7%	0	0.0%	0	0.0%	0	0.0%	0	0.0%	0	0.0%	1	33.3%	0	0.0%	0	0.0%	0	0.0%	0	0.0%	0	0.0%
Western Total		27	2	7.4%	3	11.1%	2	7.4%	0	0.0%	3	11.1%	0	0.0%	1	3.7%	13	48.1%	0	0.0%	0	0.0%	0	0.0%	0	0.0%	3	11.1%
Individual RD Totals		498	95	19.1%	55	11.0%	26	5.2%	6	1.2%	45	9.0%	3	0.6%	40	8.0%	184	36.9%	1	0.2%	0	0.0%	0	0.0%	0	0.0%	43	8.6%
Statewide Totals		498	150	30.1%	32	6.4%	48	9.6%	224	45.0%	1	0.2%	0	0.0%	1	0.2%	184	36.9%	1	0.2%	0	0.0%	0	0.0%	0	0.0%	43	8.6%

Central Region

SB94 Reason Detained by Judicial District June 2014 New Admits



■ CENTRAL REGION, 216 New Admits

■ 5th JD, 4 New Admits

■ 18th JD, 94 New Admits

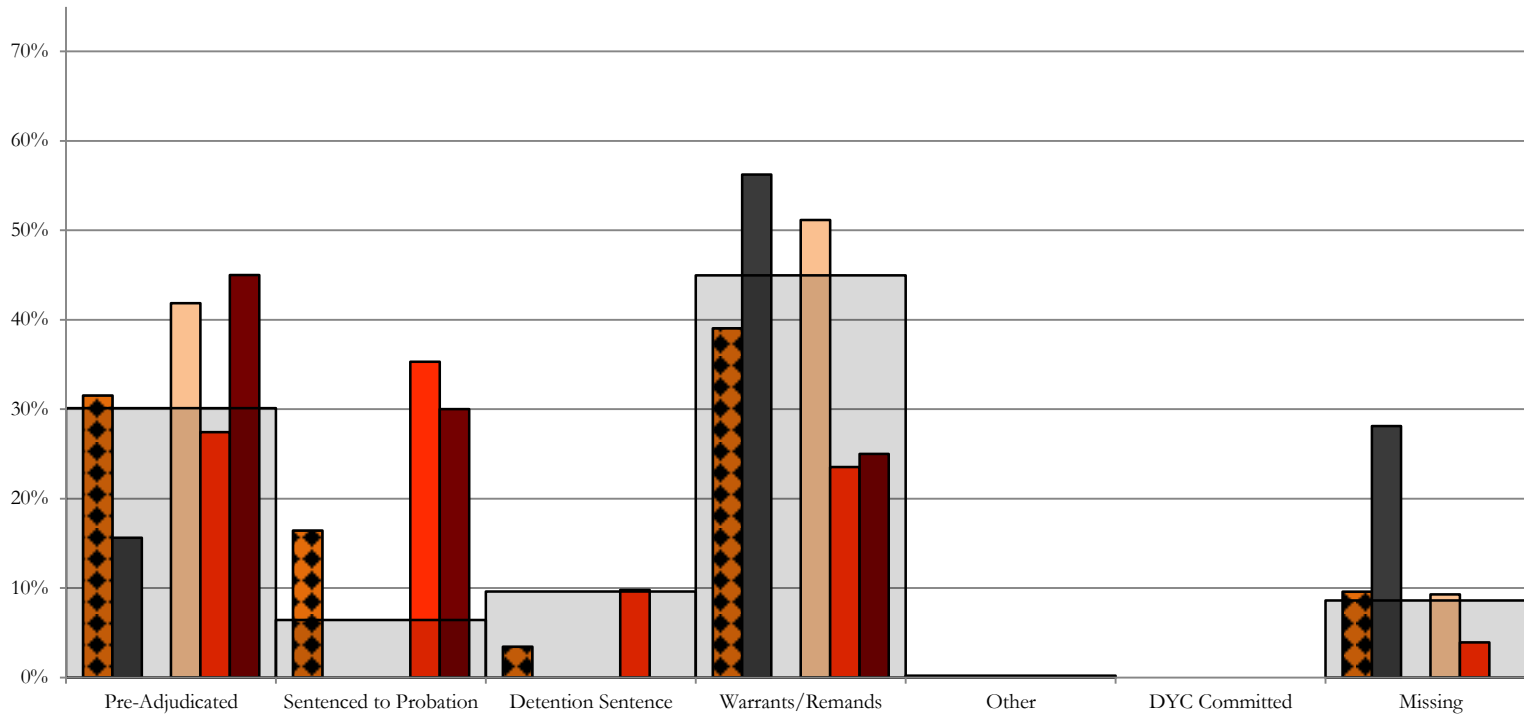
■ 1st JD, 54 New Admits

■ 2nd JD, 64 New Admits

■ STATEWIDE, 498 New Admits

Northeast Region

SB94 Reason Detained by Judicial District June 2014 New Admits



■ NORTHEAST REGION, 146 New Admits

■ 8th JD, 32 New Admits

□ 13th JD, 0 New Admits

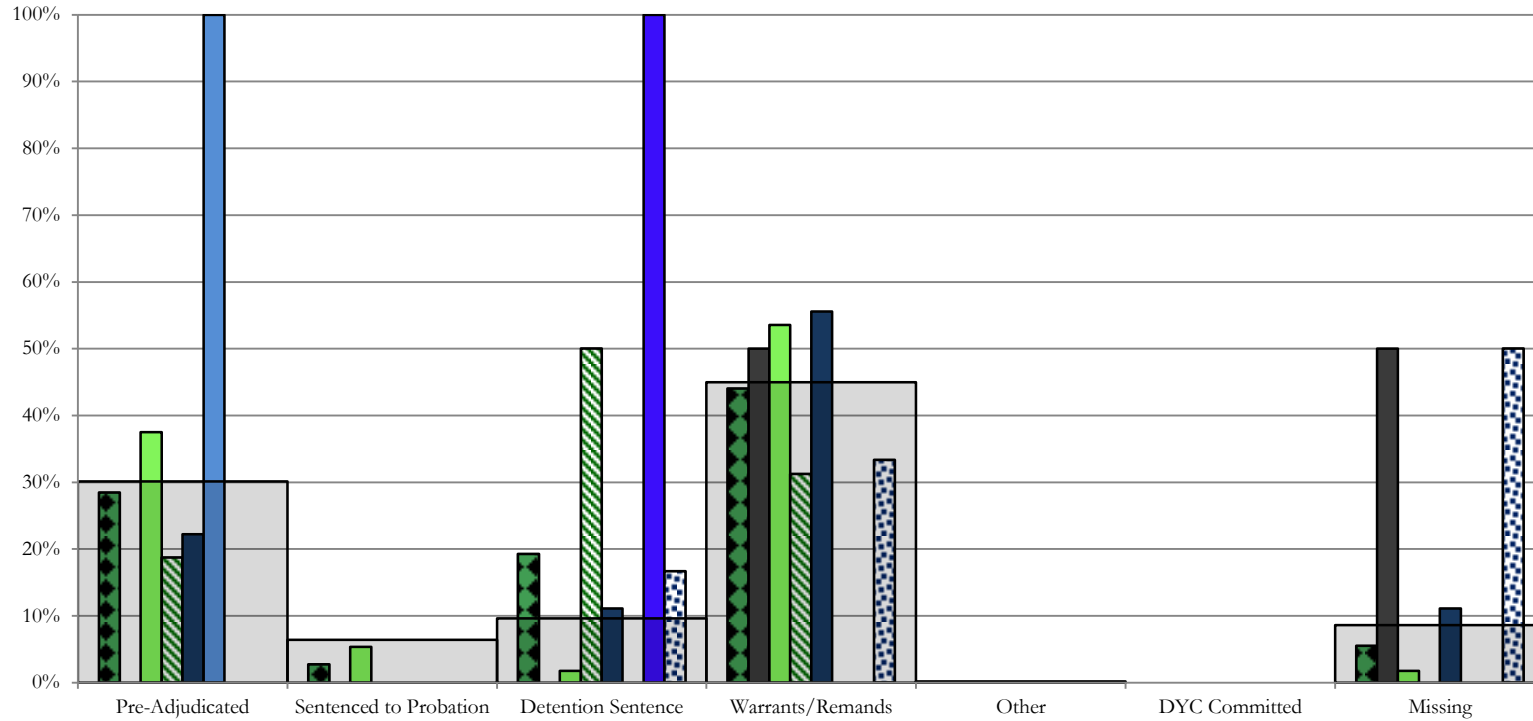
□ 17th JD, 43 New Admits

■ 19th JD, 51 New Admits

■ 20th JD, 20 New Admits

□ STATEWIDE, 498 New Admits

Southern Region SB94 Reason Detained by Judicial District June 2014 New Admits



■ SOUTHERN REGION, 109 New Admits

■ 4th JD, 56 New Admits

■ 11th JD, 9 New Admits

■ 15th JD, 2 New Admits

■ STATEWIDE, 498 New Admits

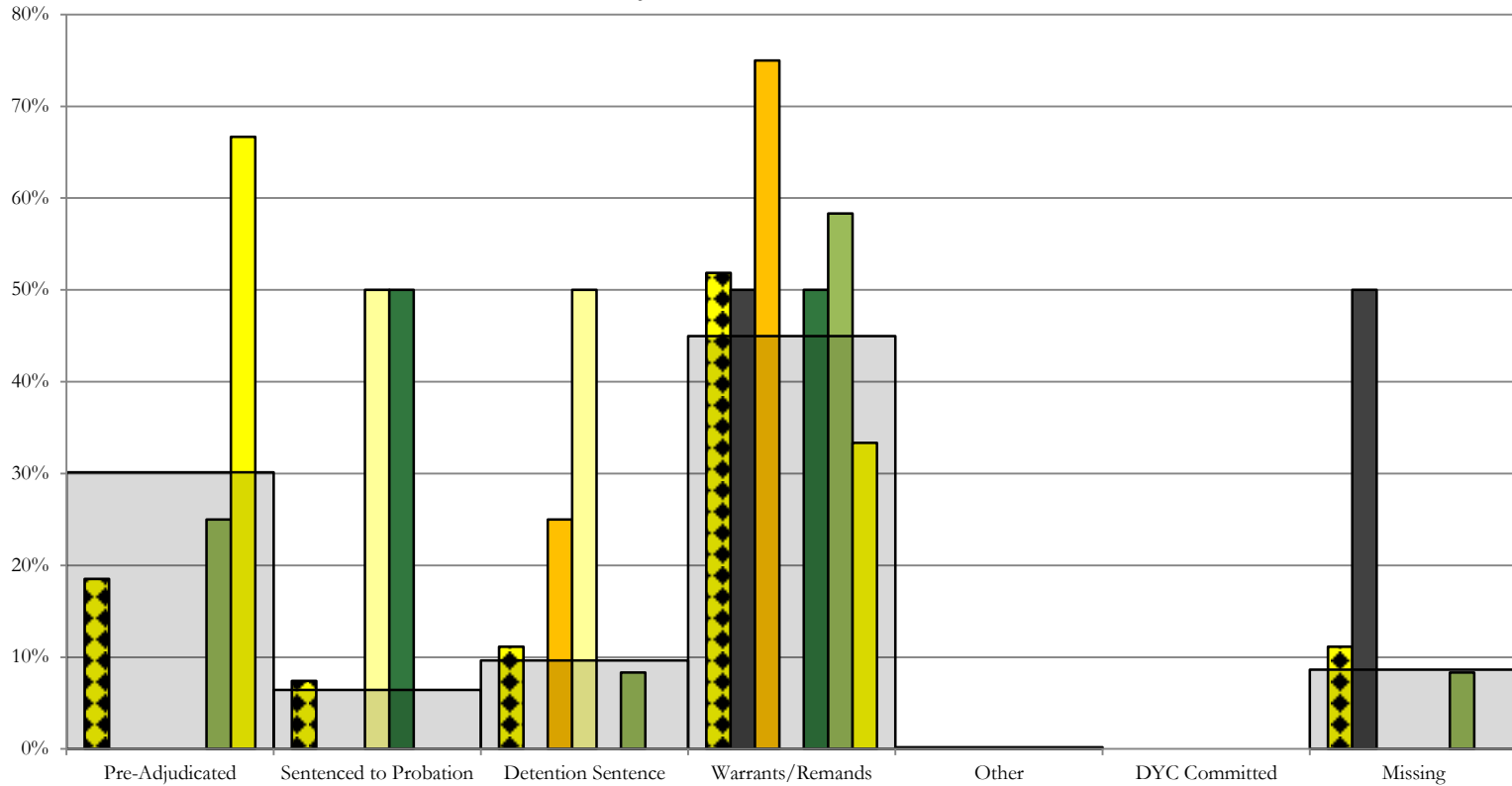
■ 3rd JD, 2 New Admits

■ 10th JD, 32 New Admits

■ 12th JD, 2 New Admits

■ 16th JD, 6 New Admits

Western Region SB94 Reason Detained by Judicial District June 2014 New Admits



■ WESTERN REGION, 27 New Admits

■ 7th JD, 4 New Admits

■ 14th JD, 2 New Admits

■ 22nd JD, 3 New Admits

■ 6th JD, 4 New Admits

■ 9th JD, 2 New Admits

■ 21st JD, 12 New Admits

■ STATEWIDE, 498 New Admits

June 2014 SB94 Supplemental Report

DYC Detention Maximum Youth Served by Judicial District¹

Region	JD	Detention Capacity	Detention ADP		Maximum Youth Served on a Single Day ^{2,3}			
			June 2014	YTD	June 2014		YTD	
					Number of Youth	% of Detention Capacity	Number of Youth	% of Detention Capacity
<i>Central Region</i>								
	1st	37	20.0	24.1	26	70.3%	36	97.3%
	2nd	64	48.7	57.4	56	87.5%	70	109.4%
	5th	4	3.7	3.3	6	150.0%	7	175.0%
	18th	61	51.2	47.0	60	98.4%	62	101.6%
Central Region		166	123.7	131.8	137	82.5%	153	92.2%
<i>Northeast Region</i>								
	8th	21	16.2	14.1	21	100.0%	24	114.3%
	13th	5	2.4	4.6	4	80.0%	12	240.0%
	17th	30	26.3	23.1	31	103.3%	31	103.3%
	19th	25	26.2	23.7	32	128.0%	34	136.0%
	20th	13	4.9	6.5	9	69.2%	14	107.7%
Northeast Region		94	76.0	71.9	83	88.3%	93	98.9%
<i>Southern Region</i>								
	3rd	2	0.7	0.7	2	100.0%	3	150.0%
	4th	51	38.1	41.7	48	94.1%	52	102.0%
	10th	13	14.0	12.1	19	146.2%	21	161.5%
	11th	8	3.9	4.5	8	100.0%	10	125.0%
	12th	4	1.9	2.1	3	75.0%	5	125.0%
	15th	2	1.7	2.5	2	100.0%	6	300.0%
	16th	3	1.4	1.8	3	100.0%	5	166.7%
Southern Region		83	61.6	65.5	75	90.4%	78	94.0%
<i>Western Region</i>								
	6th	5	1.4	2.7	3	60.0%	6	120.0%
	7th	7	1.0	3.3	2	28.6%	8	114.3%
	9th	6	0.8	2.2	2	33.3%	8	133.3%
	14th	3	0.4	0.6	1	33.3%	3	100.0%
	21st	14	11.6	10.0	15	107.1%	18	128.6%
	22nd	4	1.0	1.5	3	75.0%	4	100.0%
Western Region		39	16.1	20.2	21	53.8%	34	87.2%
<i>Missing JD or Multiple JDs</i>			0.6	1.2				
Statewide		382	278.0	290.6	306	80.1%	322	84.3%

¹ Maximum youth served is the highest number of youth in detention on a single day during the month or fiscal year.

² Regional figures are not the sum of judicial districts, but represent the maximum count on one day for the entire region.

³ State figures are not the sum of regional figures, but represent the maximum count on one day for the entire state.

June 2014

SB94 Supplemental Report

SB94 Community ADP by Judicial District

Region	JD	Pre-Adjudicated		Sentenced		Total Pre-Adjudicated and Sentenced	
		June 2014	YTD	June 2014	YTD	June 2014	YTD
<i>Central Region</i>							
	1st	148.1	109.3	38.9	28.2	187.0	137.5
	2nd	110.1	108.7	60.9	65.5	171.0	174.2
	5th	13.8	10.3	33.0	35.4	46.9	45.6
	18th	318.9	266.0	75.8	137.3	394.7	403.3
Central Total		591.0	494.3	208.6	266.3	799.6	760.6
<i>Northeast Region</i>							
	8th	40.1	35.5	23.0	21.9	63.0	57.4
	13th	37.4	37.9	15.4	7.2	52.9	45.1
	17th	75.9	61.8	61.3	37.5	137.2	99.4
	19th	45.0	40.6	31.4	24.7	76.4	65.3
	20th	32.1	39.1	26.1	30.9	58.2	70.0
Northeast Total		230.5	215.0	157.2	122.2	387.7	337.2
<i>Southern Region</i>							
	3rd	3.8	5.0	3.8	6.7	7.6	11.8
	4th	98.5	91.2	31.3	28.1	129.8	119.3
	10th	18.9	15.1	23.1	17.8	42.0	32.9
	11th	16.6	10.3	24.4	24.0	41.0	34.3
	12th	6.0	5.9	4.6	6.9	10.6	12.8
	15th	2.0	2.0	9.2	14.9	11.2	16.9
	16th	16.9	22.8	22.6	24.6	39.5	47.4
Southern Total		162.7	152.3	118.9	123.1	281.7	275.4
<i>Western Region</i>							
	6th	5.5	5.5	0.0	0.0	5.5	5.5
	7th	13.8	13.2	11.1	15.8	24.9	28.9
	9th	5.0	4.1	1.9	2.2	6.9	6.3
	14th	1.5	2.9	2.1	0.8	3.6	3.7
	21st	38.0	38.3	8.2	10.5	46.2	48.8
	22nd	3.1	3.1	1.1	0.5	4.2	3.6
Western Total		66.8	67.1	24.4	29.8	91.3	96.9
Statewide Total		1051.0	928.7	509.3	541.5	1560.3	1470.1