

February 2026 FY 2025-2026 MONTHLY POPULATION REPORT

Prepared by the Division of Youth Services (DYS)

Data Management and Analysis

3/20/2026

This document can be provided in a fully accessible format upon request. Please visit the [Accessibility at CDHS](#) webpage where you can submit your request for accessibility accommodation via the [CDHS Digital Accessibility and Support Form](#).



CO L O R A D O

Department of Human Services

Division of Youth Services

February 2026

DYS Population Report

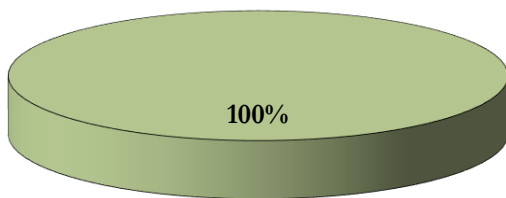
I.	Summary Population Data	1
II.	Population Trends	2
III.	Detention Program Services	
	A. Detention ADP by Judicial District	3
	B. Unused Percent of Capacity by Judicial District	4
	C. Maximum Youth Served by Judicial District	5
	D. Length of Stay (LOS) by Judicial District	6
	E. Detention Data & Capacity by Youth Center	7
	F. Detention Data by Region	8
IV.	Commitment Services	
	A. State Secure ADP by Youth Center	9
	B. Contract, Community, & Other Residential ADP by Youth Center	10
V.	Commitment ADP and New Commitments	
	A. Commitment ADP and New Commitments	11
	B. New Commitments by Judicial District	12
VI.	Parole Services	13

February 2026 DYS Population Report

I. Summary Population Data

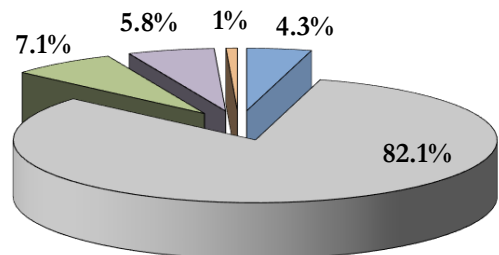
	February 2026		YTD		
	ADP	% change	ADP	LOS	
DETAINED YOUTH					
State-Operated	172.1	-7.5%	182.0	27.1	days
Total Detained	172.1	-7.5%	182.0	27.1	days
COMMITTED YOUTH					
Assessment	10.9	14.7%	9.9	23.4	days
Secure	182.4	-3.4%	188.6	13.6	months
Staff Supervised	14.7	2.4%	16.2	6.3	months
Community Residential	11.5	-4.2%	13.3	4.1	months
Other Residential	2.9	33.1%	1.7	1.4	months
<i>Trails Corrections Currently in Progress</i>	<i>0.1</i>		<i>0.0</i>		
Total Committed Residential	222.3	-2.1%	229.8	15.3	months
<i>Committed Residential w/o Boulder</i>	<i>222.3</i>	<i>-2.1%</i>	<i>229.8</i>		
PAROLED YOUTH					
Total Paroled	91.9	8.3%	93.9	6.8	months
TOTAL STATEWIDE ADP					
DETENTION	172.1	-7.5%	182.0	27.1	days
COMMITMENT	222.3	-2.1%	229.8	15.3	months
PAROLE	91.9	8.3%	93.9	6.8	months
STATE TOTAL	486.3	-2.3%	505.7		

Detention ADP YTD¹



■ State-Operated

Commitment ADP YTD¹

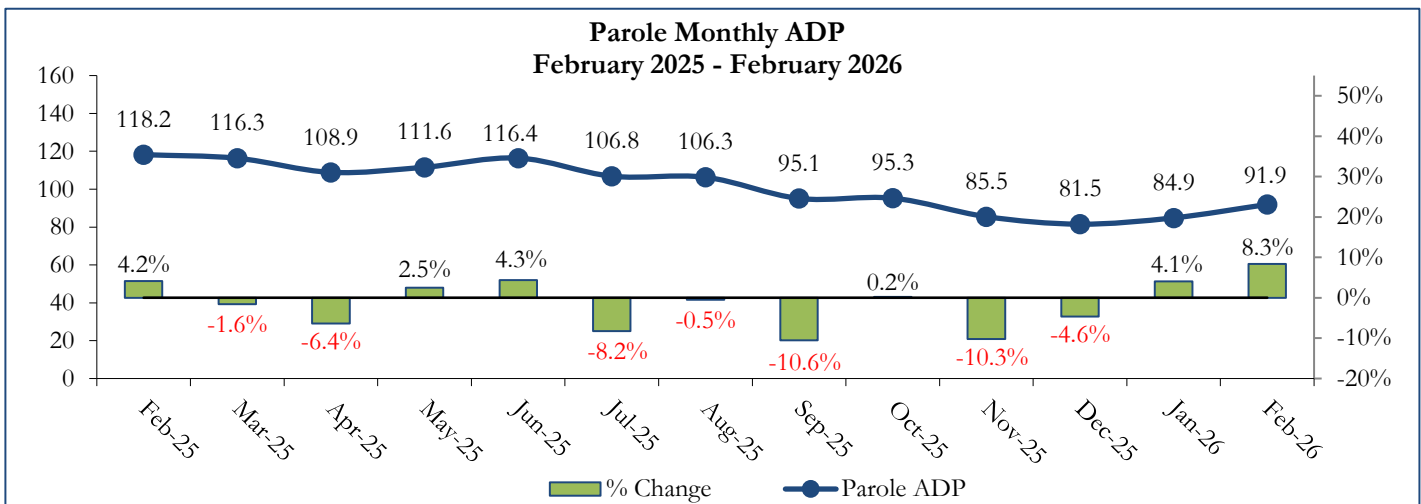
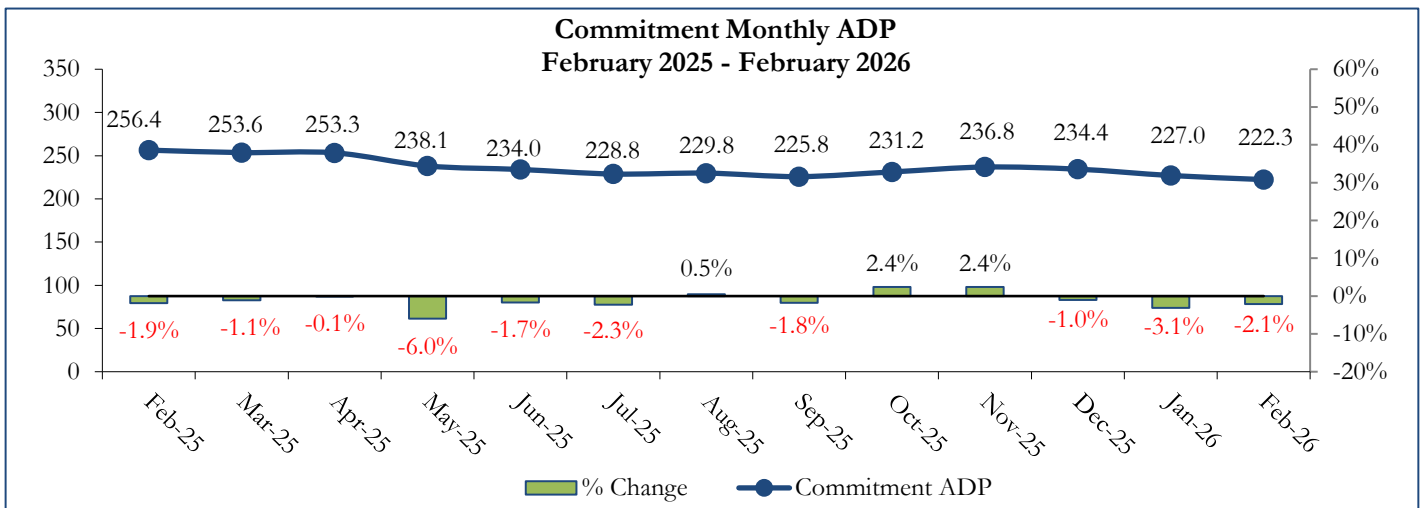
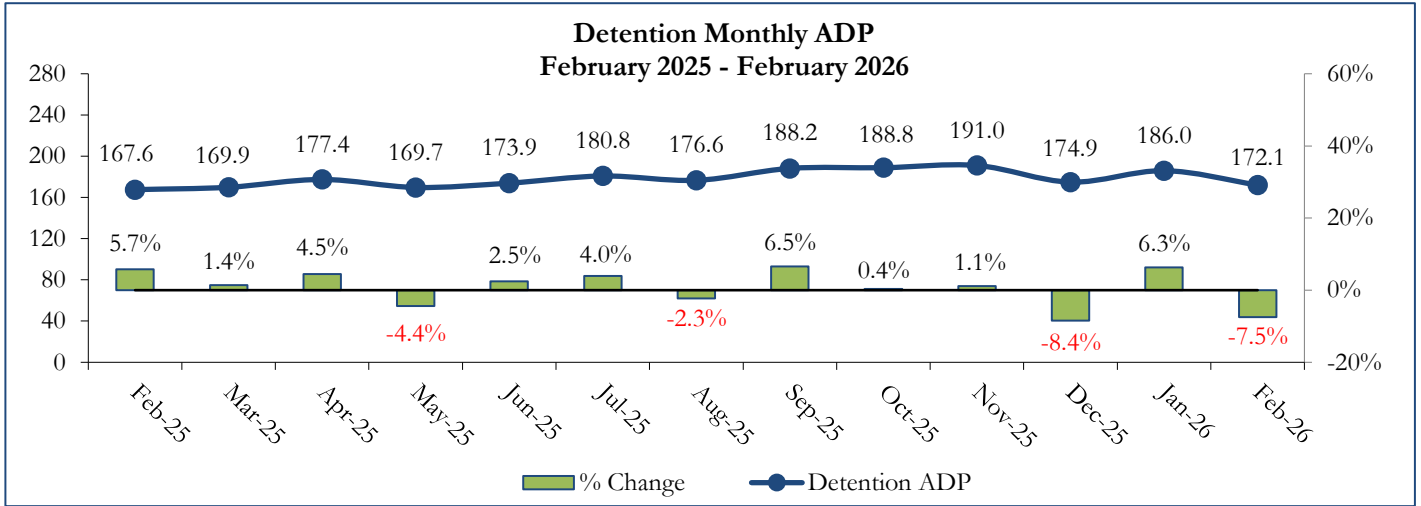


■ Assessment
 ■ Secure
 ■ Staff Supervised
 ■ Community
 ■ Other

¹ Due to rounding, totals may not sum to 100%.

February 2026 DYS Population Report

II. Population Trends



February 2026 DYS Population Report

III. Detention Program Services

A. Detention ADP by Judicial District

Region	JD	Capacity ¹	February 2026		YTD		2026 Population Estimates ²	New Admits		
			ADP	% of Cap	ADP	% of Cap		Monthly	YTD	YTD New Admit Rate ³
<i>Central Region</i>										
	1st	18	13.1	72.6%	12.6	69.8%	51,087	24	148	29.0
	2nd	29	20.3	70.0%	26.3	90.8%	54,544	24	239	43.8
	5th	2	2.9	145.5%	3.2	161.0%	8,824	2	16	18.1
	18th	25	30.0	120.2%	27.1	108.4%	68,920	31	260	37.7
	23rd	11	11.0	100.2%	6.8	61.8%	51,398	9	87	16.9
Central Total		85	77.3	91.0%	76.0	89.4%	234,773	90	750	31.9
<i>Northeast Region</i>										
	8th	11	5.4	49.4%	5.9	53.5%	34,422	4	64	18.6
	13th	2	2.4	118.5%	1.0	49.5%	8,779	3	23	26.2
	17th	20	11.9	59.7%	16.7	83.3%	69,647	11	136	19.5
	19th	19	19.9	104.5%	13.6	71.5%	44,213	21	146	33.0
	20th	7	1.2	16.7%	2.8	40.6%	27,396	1	27	9.9
Northeast Total		59	40.8	69.1%	40.0	67.7%	184,457	40	396	21.5
<i>Southern Region</i>										
	3rd	2	1.0	50.0%	0.6	32.0%	1,626	0	5	30.8
	4th	30	30.3	101.1%	39.2	130.8%	76,987	30	270	35.1
	10th	9	5.9	65.2%	7.0	77.9%	16,613	8	69	41.5
	11th	2	0.2	8.0%	0.4	18.0%	6,743	1	6	8.9
	12th	2	2.0	99.0%	2.2	109.5%	4,906	3	17	34.7
	15th	2	0.0	0.0%	0.3	12.5%	2,090	0	6	28.7
	16th	2	1.0	50.0%	0.4	22.0%	2,597	0	11	42.4
Southern Total		49	40.3	82.3%	50.1	102.3%	111,562	42	384	34.4
<i>Western Region</i>										
	6th	2	1.2	58.0%	1.9	94.0%	6,555	2	13	19.8
	7th	3	4.0	133.7%	3.4	114.0%	9,637	1	16	16.6
	9th	2	0.0	0.0%	0.6	31.5%	9,121	0	9	9.9
	14th	2	0.0	0.0%	0.2	9.5%	4,898	0	2	4.1
	21st	11	8.2	74.9%	7.6	68.9%	15,129	13	96	63.5
	22nd	2	0.2	11.0%	2.2	112.0%	2,739	0	14	51.1
Western Total		22	13.6	62.0%	15.9	72.5%	48,079	16	150	31.2
Unknown⁴			0.0		0.0			0	0	
Statewide Total		215	172.1	80.0%	182.0	84.7%	578,871	188	1,680	29.0

¹ Judicial District bed-capacity limits reflect allocations for FY 2025-26 as of July 1, 2025.

² Source: DOLA Estimates.

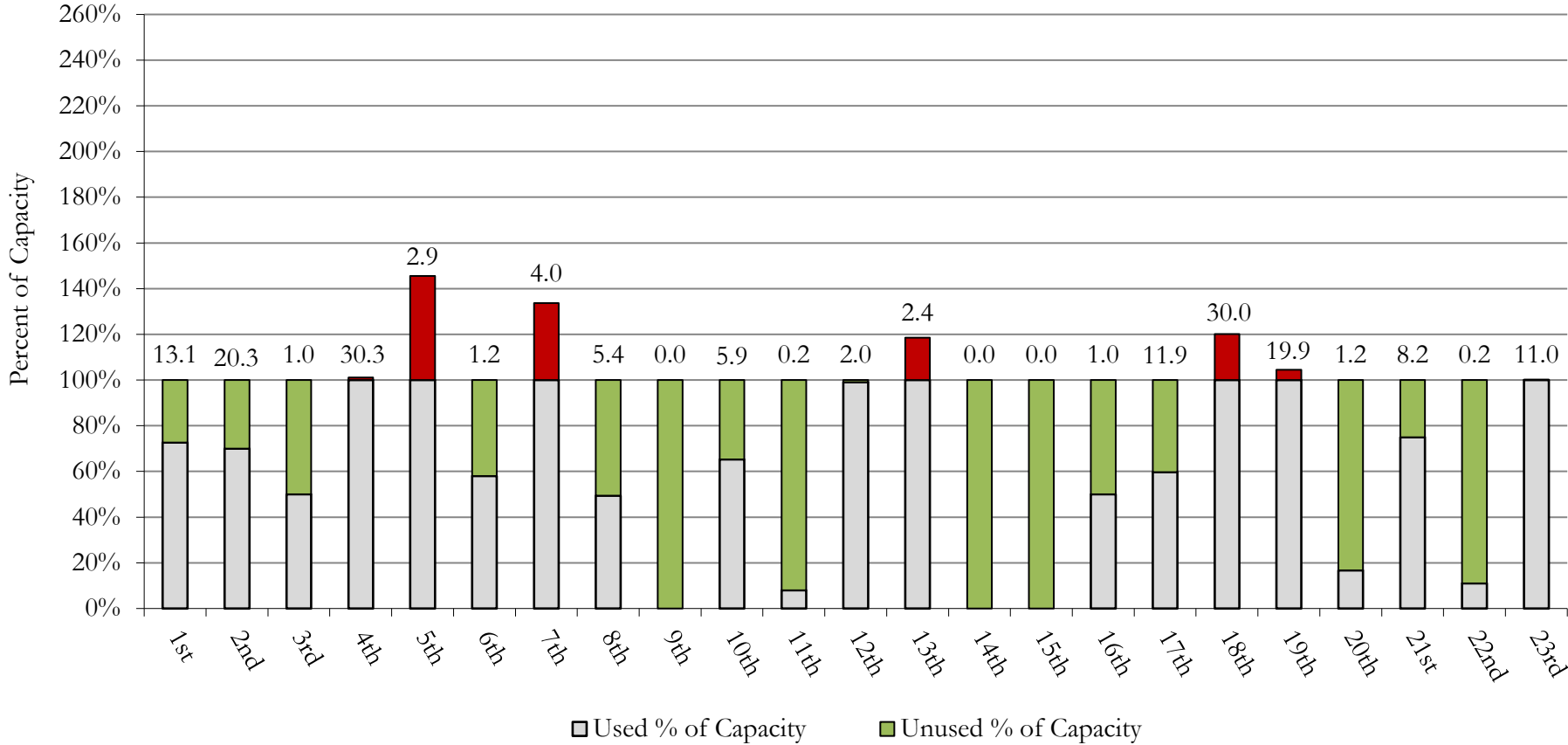
³ Per 10,000 youth in the population.

⁴ Due to tracking limitations, the Detention ADP for these youth is not associated with one particular Judicial District.

February 2026 DYS Population Report

III. Detention Program Services Continued B. Unused Percent of Capacity by Judicial District

Monthly Detention Services
Capacity Utilization by Judicial District ¹



¹ Monthly detention ADP is expressed by "Used % of Capacity" and is reported as the value above each bar for each Judicial District.

February 2026 DYS Population Report

III. Detention Program Services Continued

C. Maximum Youth Served by Judicial District¹

Region	JD	Detention Capacity ⁴	Maximum Youth Served on a Single Day ^{2,3}					
			Detention ADP		February 2026		YTD	
			February 2026	YTD	Number of Youth	% of Detention Capacity	Number of Youth	% of Detention Capacity
<i>Central Region</i>								
	1st	18	13.1	12.6	16	88.9%	20	111.1%
	2nd	29	20.3	26.3	27	93.1%	36	124.1%
	5th	2	2.9	3.2	3	150.0%	5	250.0%
	18th	25	30.0	27.1	34	136.0%	36	144.0%
	23rd	11	11.0	6.8	14	127.3%	14	127.3%
Central Region		85	77.3	76.0	88	103.5%	94	110.6%
<i>Northeast Region</i>								
	8th	11	5.4	5.9	7	63.6%	12	109.1%
	13th	2	2.4	1.0	3	150.0%	3	150.0%
	17th	20	11.9	16.7	15	75.0%	27	135.0%
	19th	19	19.9	13.6	23	121.1%	23	121.1%
	20th	7	1.2	2.8	2	28.6%	8	114.3%
Northeast Region		59	40.8	40.0	44	74.6%	50	84.7%
<i>Southern Region</i>								
	3rd	2	1.0	0.6	1	50.0%	2	100.0%
	4th	30	30.3	39.2	38	126.7%	49	163.3%
	10th	9	5.9	7.0	7	77.8%	12	133.3%
	11th	2	0.2	0.4	1	50.0%	1	50.0%
	12th	2	2.0	2.2	3	150.0%	5	250.0%
	15th	2	0.0	0.3	0	0.0%	2	100.0%
	16th	2	1.0	0.4	1	50.0%	3	150.0%
Southern Region		49	40.3	50.1	48	98.0%	58	118.4%
<i>Western Region</i>								
	6th	2	1.2	1.9	1	50.0%	5	250.0%
	7th	3	4.0	3.4	5	166.7%	6	200.0%
	9th	2	0.0	0.6	0.0	0.0%	3	150.0%
	14th	2	0.0	0.2	0.0	0.0%	1	50.0%
	21st	11	8.2	7.6	12	109.1%	14	127.3%
	22nd	2	0.2	2.2	1	50.0%	6	300.0%
Western Region		22	13.6	15.9	19	86.4%	23	104.5%
<i>Missing JD or Multiple JDs</i>			0.0	0.0				
Statewide		215	172.1	182.0	190	88.4%	210	97.7%

¹ Maximum youth served is the highest number of youth in detention on a single day during the month or fiscal year.

² Regional figures are not the sum of Judicial Districts, but represent the maximum count on one day for the entire region.

³ State figures are not the sum of regional figures, but represent the maximum count on one day for the entire state.

⁴ Judicial District bed-capacity limits reflect allocations for FY 2025-26 as of July 1, 2025.

February 2026 DYS Population Report

III. Detention Program Services Continued

D. Length of Stay (LOS) by Judicial District

Region	JD	YTD Detention Releases	YTD LOS (days)	LOS (days) Compared to State AVG
<i>Central Region</i>				
	1st	147	19.0	-8.1
	2nd	255	30.7	3.6
	5th	15	43.5	16.4
	18th	270	27.3	0.1
	23rd	85	13.7	-13.5
Central Total		772	25.7	-1.5
<i>Northeast Region</i>				
	8th	65	18.0	-9.2
	13th	20	9.7	-17.4
	17th	146	31.9	4.7
	19th	145	20.1	-7.0
	20th	30	20.4	-6.8
Northeast Total		406	23.5	-3.6
<i>Southern Region</i>				
	3rd	5	8.2	-19.0
	4th	283	32.9	5.7
	10th	72	31.2	4.1
	11th	5	22.7	-4.4
	12th	16	28.2	1.1
	15th	6	9.9	-17.2
	16th	10	6.4	-20.7
Southern Total		397	30.9	3.8
<i>Western Region</i>				
	6th	14	48.9	21.8
	7th	15	35.3	8.1
	9th	10	15.5	-11.6
	14th	2	22.9	-4.2
	21st	95	20.2	-6.9
	22nd	16	43.2	16.1
Western Total		152	26.5	-0.6
Statewide Total		1,684	27.1	-

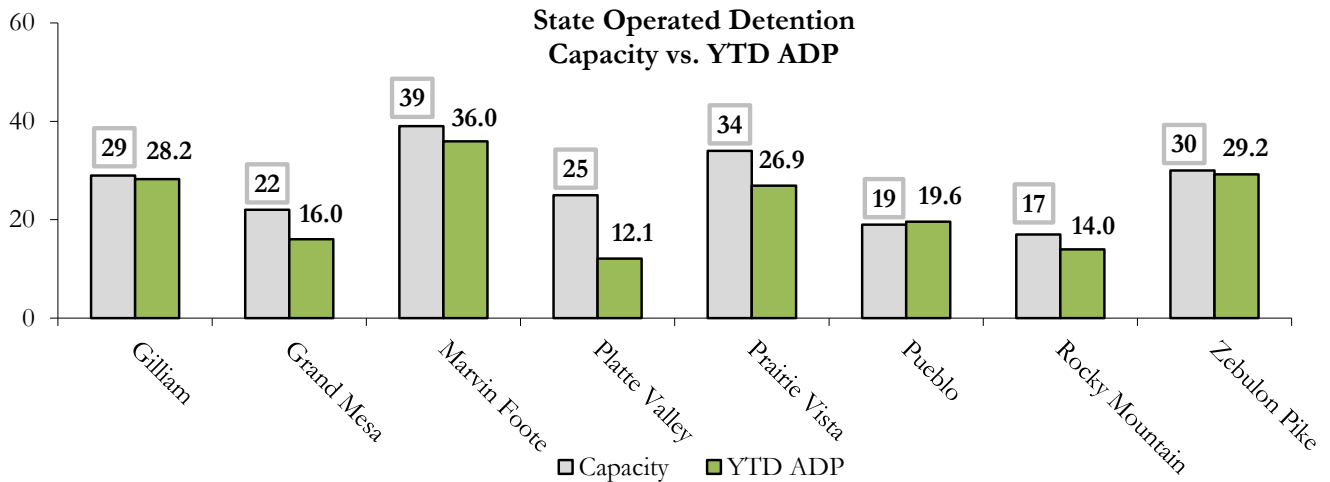
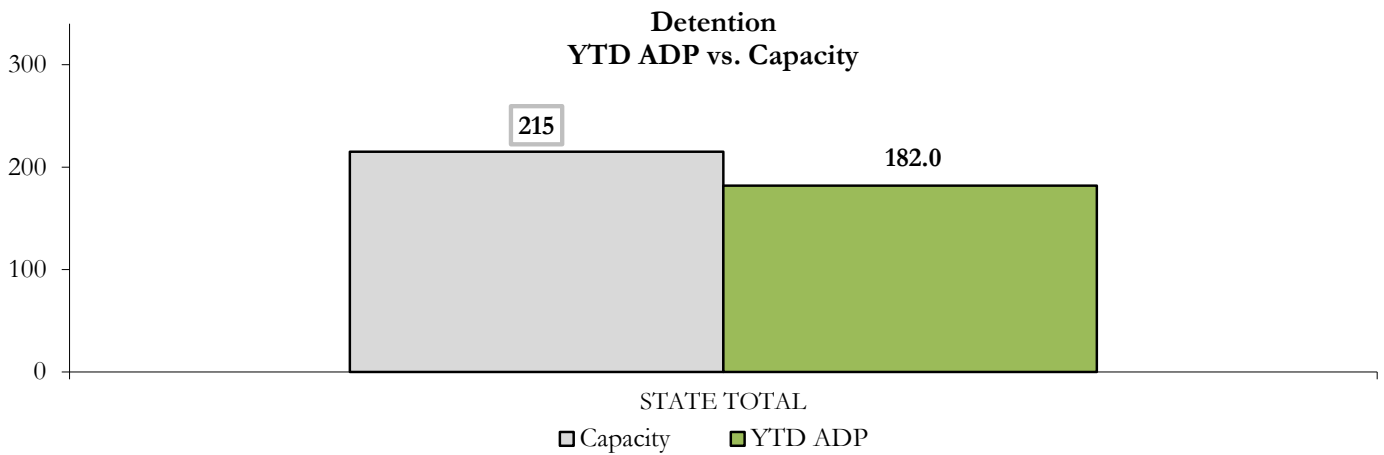
February 2026

DYS Population Report

III. Detention Program Services Continued

E. Detention Data & Capacity by Youth Center

State-Operated Detention							
Youth Center	Operating Capacity ¹	Average Daily Population			New Admissions		LOS (days)
		Monthly	YTD	YTD % of Cap	Monthly	YTD	YTD
Rocky Mountain	17	14.0	14.0	82.2%	19	124	29.5
Gilliam	29	22.0	28.2	97.3%	33	258	30.9
Grand Mesa	22	14.1	16.0	72.8%	16	149	27.0
Marvin Foote	39	41.3	36.0	92.2%	38	378	23.2
Platte Valley	25	16.7	12.1	48.4%	17	160	16.8
Prairie Vista	34	23.3	26.9	79.2%	24	234	28.8
Pueblo	19	14.9	19.6	103.2%	14	201	26.0
Zebulon Pike	30	25.7	29.2	97.4%	27	176	36.7
State Total	215	172.1	182.0	84.7%	188	1,680	27.1



¹ Youth Center bed-capacity limits reflect allocations for FY 2025-26 as of July 1, 2025.

February 2026

DYS Population Report

III. Detention Program Services Continued

F. Detention Data by Region

Youth Center & Region	Operating Capacity ¹	Maximum Count ²			ADP
		February 2026	YTD	% of Capacity YTD	YTD
<i>Central Region</i>					
Gilliam	29	31	38	131.0%	28.2
Marvin Foote	39	44	44	112.8%	36.0
Rocky Mountain	17	16	20	117.6%	14.0
Central Total	85	88	94	110.6%	78.2
<i>Northeast Region</i>					
Platte Valley	25	18	18	72.0%	12.1
Prairie Vista	34	28	36	105.9%	26.9
Northeast Total	59	44	50	84.7%	39.0
<i>Southern Region</i>					
Pueblo	19	19	27	142.1%	19.6
Zebulon Pike	30	30	32	106.7%	29.2
Southern Total	49	48	58	118.4%	48.8
<i>Western Region</i>					
Grand Mesa	22	19	23	104.5%	16.0
Western Total	22	19	23	104.5%	16.0
STATE TOTAL	215	190	210	97.7%	182.0

¹ Youth Center bed-capacity limits reflect allocations for FY 2025-26 as of July 1, 2025.

² Region and state maximum count totals are maximum counts of youth in each Region, and throughout Colorado. Maximum count totals are not regional or state sums.

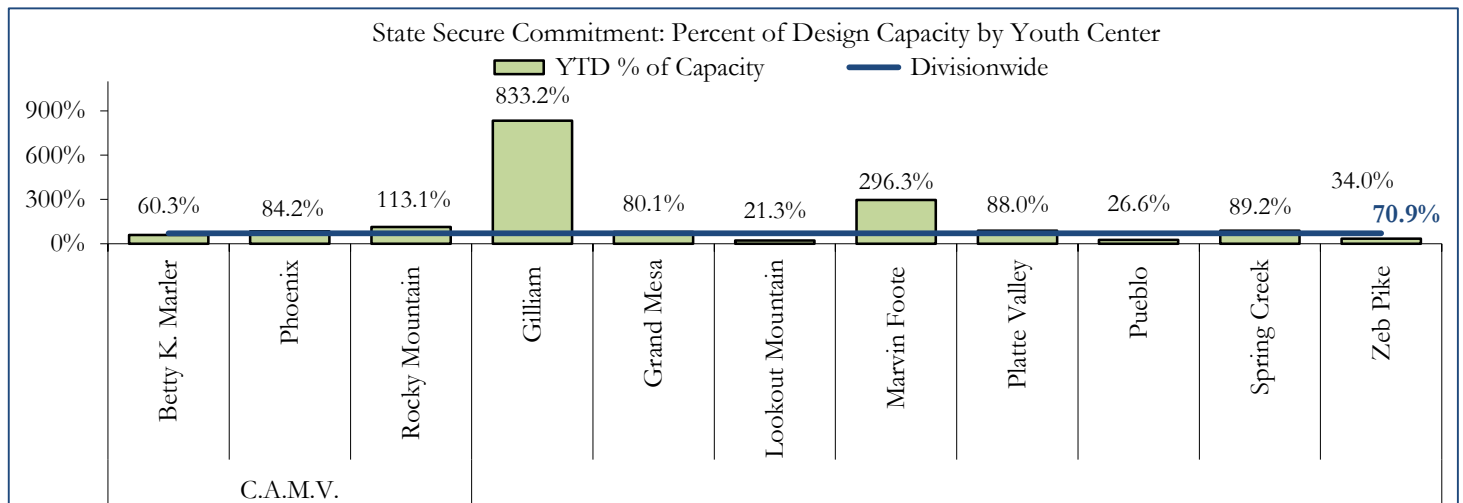
February 2026

DYS Population Report

IV. Commitment Services

A. State Secure ADP by Youth Center

STATE SECURE + ASSESSMENT								
Youth Center	Assessment		ADP Secure		Total		Capacity Design	
	Monthly	YTD	Monthly	YTD	Monthly	YTD	Capacity ¹	% of YTD
Campus at Mount View								
Betty K. Marler	2.0	0.8	19.6	17.3	21.6	18.1	30	60.3%
Phoenix	0.0	0.0	28.6	30.3	28.6	30.3	36	84.2%
Rocky Mountain	0.6	0.4	1.5	1.8	2.1	2.3	2	113.1%
Gilliam	0.0	0.4	3.8	7.9	3.8	8.3	1	833.2%
Grand Mesa	1.8	1.0	25.4	25.4	27.2	26.4	33	80.1%
Lookout Mountain ²	3.6	1.8	15.4	13.6	19.0	15.3	72	21.3%
Marvin Foote	0.0	0.7	1.8	5.3	1.8	5.9	2	296.3%
Platte Valley	0.2	2.4	37.9	43.3	38.1	45.7	52	88.0%
Prairie Vista	0.0	0.3	0.5	0.6	0.5	0.9	-	-
Pueblo	0.0	0.0	0.0	0.3	0.0	0.3	1	26.6%
Spring Creek	2.6	2.2	47.4	42.4	50.0	44.6	50	89.2%
Zebulon Pike	0.0	0.0	0.5	0.3	0.5	0.3	1	34.0%
Assessment Total	10.9	9.9	-	-	10.9	9.9	30	
Secure Total	-	-	182.4	188.6	182.4	188.6	255	
STATE SECURE TOTAL					193.3	198.6	280	70.9%



¹ Youth center bed-capacity design limits reflect allocations for FY 2025-26 as of July 1, 2025.

² Beginning July 1, 2025, Aspire, Golden Peak, and Summit converged to a single Youth Center: Lookout Mountain YSC.

February 2026 DYS Population Report

IV. Commitment Services Continued

B. Contract, Community, & Other Residential ADP by Youth Center

Youth Center/Program	ADP	
	Monthly	YTD
CONTRACT: STAFF SUPERVISED		
Alternative Homes For Youth - Greeley	13.7	12.5
Gateway Residential Program - Delta	1.0	2.4
Third Way Center - Lowry	0.0	1.2
Staff Supervised Subtotal	14.7	16.2
CONTRACT: COMMUNITY RESIDENTIAL		
Ariel Clinical Services	1.0	1.0
Mt Evans Qualifying House	7.0	8.1
Third Way Center, Lincoln	1.3	2.6
Third Way Center, Pontiac	0.0	0.2
Third Way Center, York	2.2	1.3
Community Residential Subtotal	11.5	13.3
(Contract) Staff Supervised + Community Subtotal	26.2	29.5
OTHER RESIDENTIAL		
Hospital	0.0	0.1
Residential Drug/Alcohol Program	0.9	0.5
Residential Mental Health Program	0.0	0.1
Residential Work Program	0.0	0.1
Shelter Care (short term)	2.0	0.9
Other Residential Subtotal	2.9	1.7
<i>Trails Corrections Currently in Progress</i>	<i>0.1</i>	<i>0.0</i>
COMMITTED RESIDENTIAL TOTAL	222.3	229.8

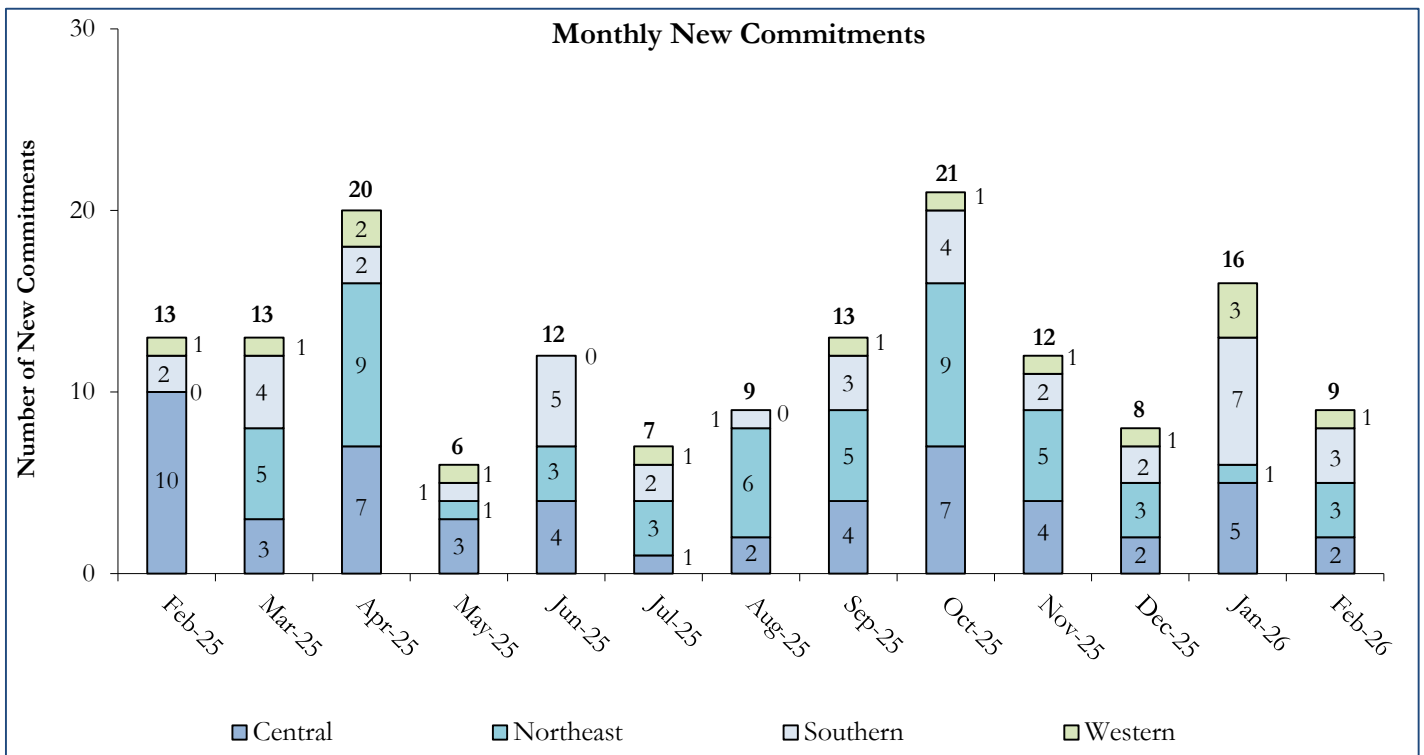
February 2026 DYS Population Report

V. Commitment ADP and New Commitments

A. Commitment ADP and New Commitments

COMMITMENT ADP				
Region	February	% Change from Prior Month	YTD	% Change from Prior FY
Central	84.1	0.6%	84.7	-21.8%
Northeast	59.6	-12.7%	68.2	0.02%
Southern	49.6	8.8%	46.1	-23.0%
Western	29.1	-1.9%	30.8	-9.7%
Commitment ADP	222.3	-2.1%	229.8	-15.0%

NEW COMMITMENTS					
Region	FY 25-26		FY 24-25		% Change from last YTD
Region	February	YTD	February	YTD	
Central	2	30	10	54	-44.4%
Northeast	3	35	0	31	12.9%
Southern	3	25	2	28	-10.7%
Western	1	11	1	15	-26.7%
TOTAL	9	101	13	128	-21.1%



February 2026 DYS Population Report

V. Commitment ADP and New Commitments Continued

B. New Commitments by Judicial District

Region	JD ¹	2026 Population Estimates ²	ADP ³		New Commitments		
			February 2026	YTD	February 2026	YTD	YTD Rate ⁴
<i>Central Region</i>							
	1st	51,087	22.5	17.1	2	12	2.3
	2nd	54,544	26.9	28.0	0	10	1.8
	5th	8,824	2.0	1.8	0	1	1.1
	18th	68,920	35.5	36.7	4	16	2.3
	23rd	51,398	7.0	8.0	0	2	0.4
Central Total		234,773	93.9	91.6	6	41	1.7
<i>Northeast Region</i>							
	8th	34,422	8.3	12.1	0	5	1.5
	13th	8,779	1.2	2.0	0	0	0.0
	17th	69,647	14.6	18.7	0	8	1.1
	19th	44,213	25.7	26.8	0	13	2.9
	20th	27,396	4.0	5.0	0	1	0.4
Northeast Total		184,457	53.8	64.5	0	27	1.5
<i>Southern Region</i>							
	3rd	1,626	0.0	0.0	0	0	0.0
	4th	76,987	35.1	32.5	2	17	2.2
	10th	16,613	11.1	11.4	0	5	3.0
	11th	6,743	0.0	0.0	0	0	0.0
	12th	4,906	1.4	1.1	0	1	2.0
	15th	2,090	0.0	0.4	0	0	0.0
	16th	2,597	1.0	1.0	0	0	0.0
Southern Total		111,562	48.7	46.4	2	23	2.1
<i>Western Region</i>							
	6th	6,555	3.7	2.6	0	3	4.6
	7th	9,637	1.0	1.5	0	2	2.1
	9th	9,121	1.0	1.0	0	0	0.0
	14th	4,898	1.0	1.0	0	0	0.0
	21st	15,129	14.0	16.4	0	3	2.0
	22nd	2,739	5.4	4.8	1	2	7.3
Western Total		48,079	26.1	27.3	1	10	2.1
Statewide Total		578,871	222.3	229.8	9	101	1.7

¹ JD represents the Judicial District in which the client was committed. Regional totals are a sum of their respective Judicial Districts.

² Source: DOLA Estimates.

³ Due to rounding, totals shown may not be an exact sum of the subtotals.

⁴ Per 10,000 youth in the population.

February 2026 DYS Population Report

VI. Parole Services

PAROLE ADP

Region	Monthly	YTD		% Change from Prior Year
		FY 25-26	FY 24-25	
Central	31.5	30.9	44.8	-31.0%
Northeast	33.2	28.6	27.6	3.3%
Southern	19.9	24.2	16.3	49.1%
Western	7.4	10.2	14.9	-31.6%
Total	91.9	93.9	103.6	-9.3%

Region	Parole Intakes		Discharges		LOS
	Monthly	YTD	Monthly	YTD	
Central	1	27	8	49	7.5
Northeast	6	43	6	37	6.0
Southern	1	20	2	38	6.9
Western	1	11	0	21	6.7
Total	9	101	16	145	6.8

Monthly Parole ADP

