

# January 2026 FY 2025-2026 MONTHLY POPULATION REPORT

---

Prepared by the Division of Youth Services (DYS)  
Data Management and Analysis  
2/11/2026

This document can be provided in a fully accessible format upon request. Please visit the [Accessibility at CDHS](#) webpage where you can submit your request for accessibility accommodation via the [CDHS Digital Accessibility and Support Form](#).



**COLORADO**

**Department of Human Services**

Division of Youth Services

# January 2026

## DYS Population Report

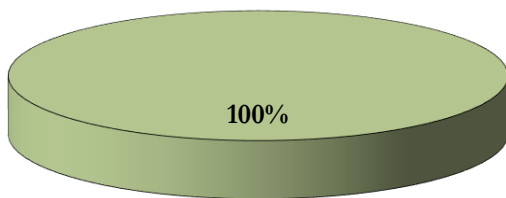
<b>I.</b>	<b>Summary Population Data</b>	<b>1</b>
<b>II.</b>	<b>Population Trends</b>	<b>2</b>
<b>III.</b>	<b>Detention Program Services</b>	
	A. Detention ADP by Judicial District	3
	B. Unused Percent of Capacity by Judicial District	4
	C. Maximum Youth Served by Judicial District	5
	D. Length of Stay (LOS) by Judicial District	6
	E. Detention Data & Capacity by Youth Center	7
	F. Detention Data by Region	8
<b>IV.</b>	<b>Commitment Services</b>	
	A. State Secure ADP by Youth Center	9
	B. Contract, Community, & Other Residential ADP by Youth Center	10
<b>V.</b>	<b>Commitment ADP and New Commitments</b>	
	A. Commitment ADP and New Commitments	11
	B. New Commitments by Judicial District	12
<b>VI.</b>	<b>Parole Services</b>	<b>13</b>

# January 2026 DYS Population Report

## I. Summary Population Data

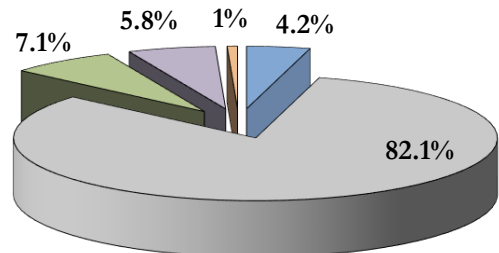
	January 2026		YTD		
	ADP	% change	ADP	LOS	
<b>DETAINED YOUTH</b>					
State-Operated	186.0	6.3%	183.5	26.8	days
<b>Total Detained</b>	<b>186.0</b>	<b>6.3%</b>	<b>183.5</b>	<b>26.8</b>	<b>days</b>
<b>COMMITTED YOUTH</b>					
Assessment	9.5	60.4%	9.8	23.6	days
Secure	188.8	-4.1%	189.5	13.4	months
Staff Supervised	14.3	-13.0%	16.4	6.0	months
Community Residential	12.0	-9.1%	13.5	4.0	months
Other Residential	2.1	114.6%	1.6	1.4	months
<i>Trails Corrections Currently in Progress</i>	<i>0.3</i>		<i>0.0</i>		
<b>Total Committed Residential</b>	<b>227.0</b>	<b>-3.1%</b>	<b>230.7</b>	<b>15.1</b>	<b>months</b>
<i>Committed Residential w/o Boulder</i>	<i>227.0</i>	<i>-3.1%</i>	<i>230.7</i>		
<b>PAROLED YOUTH</b>					
<b>Total Paroled</b>	<b>84.9</b>	<b>4.1%</b>	<b>94.2</b>	<b>6.8</b>	<b>months</b>
<b>TOTAL STATEWIDE ADP</b>					
DETENTION	186.0	6.3%	183.5	26.8	days
COMMITMENT	227.0	-3.1%	230.7	15.1	months
PAROLE	84.9	4.1%	94.2	6.8	months
<b>STATE TOTAL</b>	<b>497.8</b>	<b>1.4%</b>	<b>508.4</b>		

**Detention ADP YTD<sup>1</sup>**



■ State-Operated

**Commitment ADP YTD<sup>1</sup>**

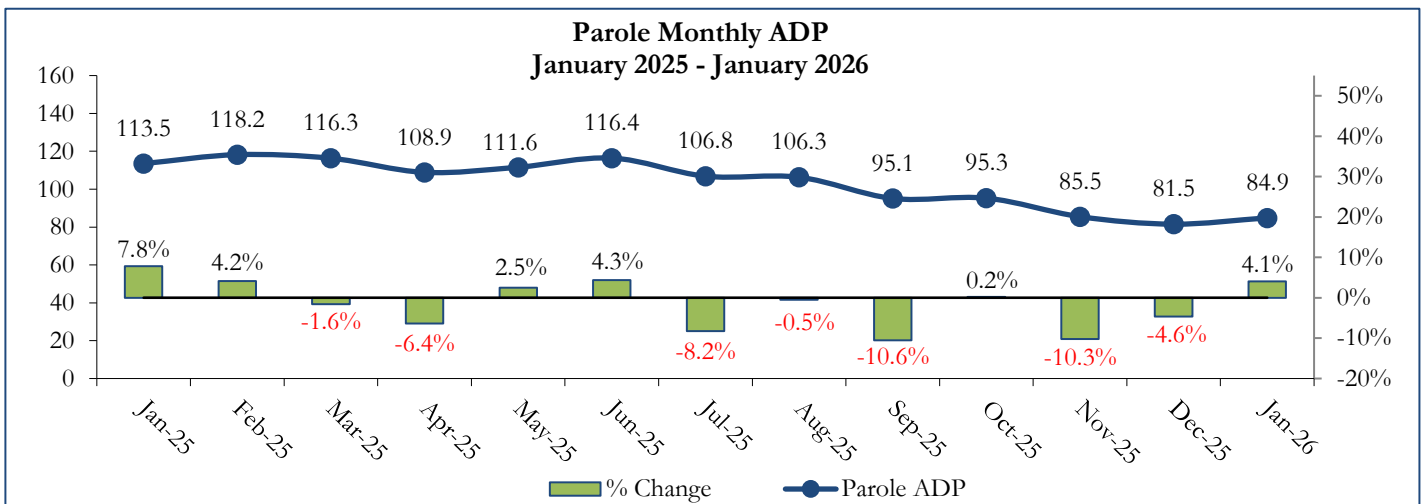
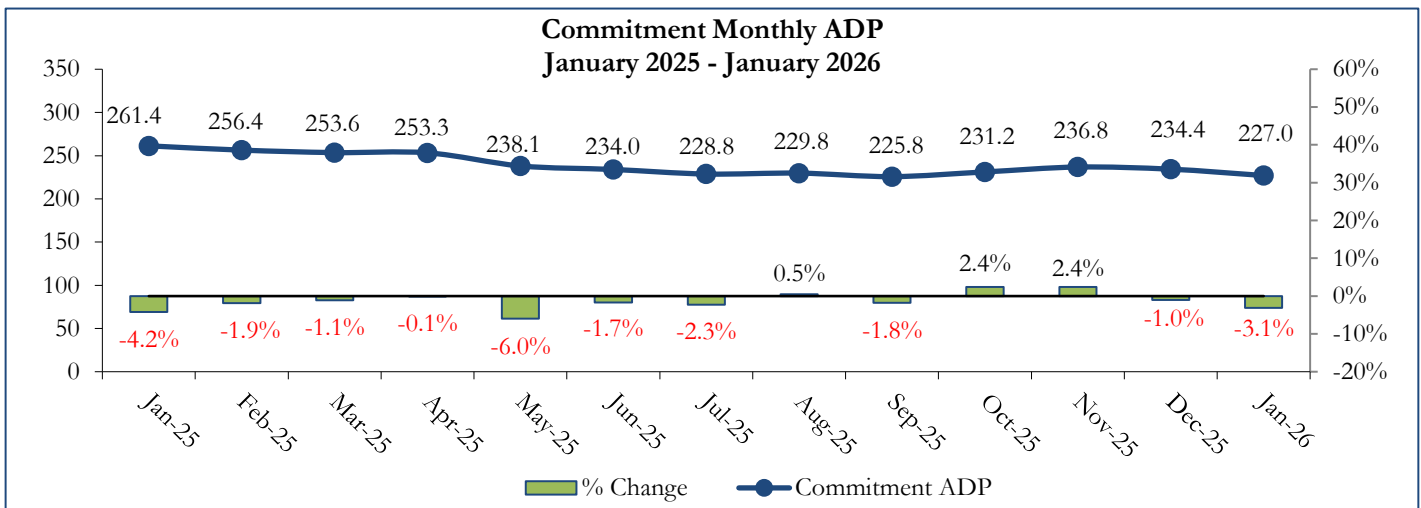
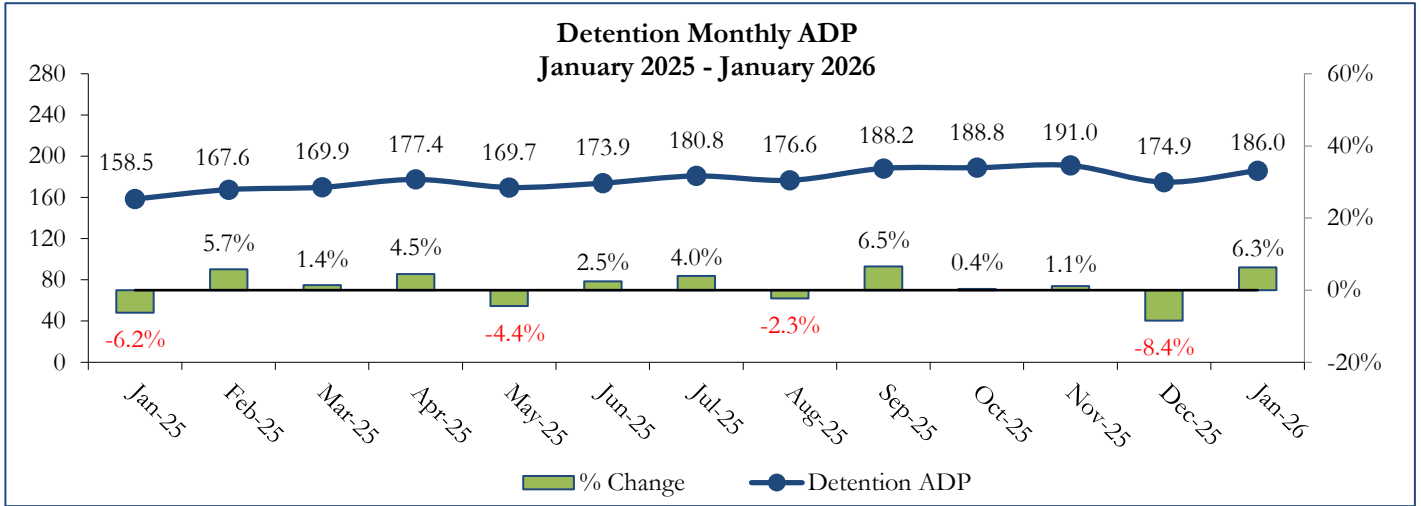


■ Assessment  
 ■ Secure  
 ■ Staff Supervised  
 ■ Community  
 ■ Other

<sup>1</sup> Due to rounding, totals may not sum to 100%.

# January 2026 DYS Population Report

## II. Population Trends



# January 2026 DYS Population Report

## III. Detention Program Services

### A. Detention ADP by Judicial District

Region	JD	Capacity <sup>1</sup>	January 2026		YTD		2026 Population Estimates <sup>2</sup>	New Admits		
			ADP	% of Cap	ADP	% of Cap		Monthly	YTD	YTD New Admit Rate <sup>3</sup>
<i>Central Region</i>										
	1st	18	13.5	74.8%	12.5	69.5%	51,087	22	124	24.3
	2nd	29	25.3	87.2%	27.1	93.6%	54,544	36	215	39.4
	5th	2	3.0	150.0%	3.3	163.0%	8,824	0	14	15.9
	18th	25	29.9	119.7%	26.9	107.4%	68,920	32	229	33.2
	23rd <sup>4</sup>	11	9.5	86.6%	6.3	56.8%	51,398	12	78	15.2
<b>Central Total</b>		<b>85</b>	<b>81.2</b>	<b>95.5%</b>	<b>76.0</b>	<b>89.4%</b>	<b>234,773</b>	<b>102</b>	<b>660</b>	<b>28.1</b>
<i>Northeast Region</i>										
	8th	11	6.4	57.8%	5.9	54.0%	34,422	11	60	17.4
	13th	2	0.5	26.0%	0.8	40.5%	8,779	5	20	22.8
	17th	20	12.4	61.8%	17.3	86.4%	69,647	12	125	17.9
	19th	19	17.4	91.5%	12.8	67.3%	44,213	30	125	28.3
	20th	7	2.6	36.9%	3.1	43.7%	27,396	2	26	9.5
<b>Northeast Total</b>		<b>59</b>	<b>39.2</b>	<b>66.4%</b>	<b>39.9</b>	<b>67.6%</b>	<b>184,457</b>	<b>60</b>	<b>356</b>	<b>19.3</b>
<i>Southern Region</i>										
	3rd	2	1.6	78.0%	0.6	30.0%	1,626	1	5	30.8
	4th	30	36.9	123.1%	40.4	134.6%	76,987	30	240	31.2
	10th	9	7.5	83.1%	7.2	79.4%	16,613	10	61	36.7
	11th	2	0.3	13.5%	0.4	19.5%	6,743	3	5	7.4
	12th	2	3.5	174.0%	2.2	111.0%	4,906	2	14	28.5
	15th	2	0.9	43.5%	0.3	14.0%	2,090	0	6	28.7
	16th	2	0.5	27.0%	0.4	18.0%	2,597	2	11	42.4
<b>Southern Total</b>		<b>49</b>	<b>51.1</b>	<b>104.3%</b>	<b>51.4</b>	<b>104.9%</b>	<b>111,562</b>	<b>48</b>	<b>342</b>	<b>30.7</b>
<i>Western Region</i>										
	6th	2	0.5	24.0%	2.0	98.5%	6,555	1	11	16.8
	7th	3	4.1	137.0%	3.3	111.3%	9,637	1	15	15.6
	9th	2	0.3	12.5%	0.7	35.5%	9,121	0	9	9.9
	14th	2	0.1	6.0%	0.2	10.5%	4,898	0	2	4.1
	21st	11	8.0	72.9%	7.5	68.1%	15,129	12	83	54.9
	22nd	2	1.4	72.0%	2.5	124.0%	2,739	0	14	51.1
<b>Western Total</b>		<b>22</b>	<b>14.4</b>	<b>65.5%</b>	<b>16.2</b>	<b>73.6%</b>	<b>48,079</b>	<b>14</b>	<b>134</b>	<b>27.9</b>
<b>Unknown<sup>5</sup></b>			<b>0.0</b>		<b>0.1</b>			<b>0</b>	<b>0</b>	
<b>Statewide Total</b>		<b>215</b>	<b>186.0</b>	<b>86.5%</b>	<b>183.5</b>	<b>85.4%</b>	<b>578,871</b>	<b>224</b>	<b>1,492</b>	<b>25.8</b>

<sup>1</sup> Judicial District bed-capacity limits reflect allocations for FY 2025-26 as of July 1, 2025.

<sup>2</sup> Source: DOLA Estimates.

<sup>3</sup> Per 10,000 youth in the population.

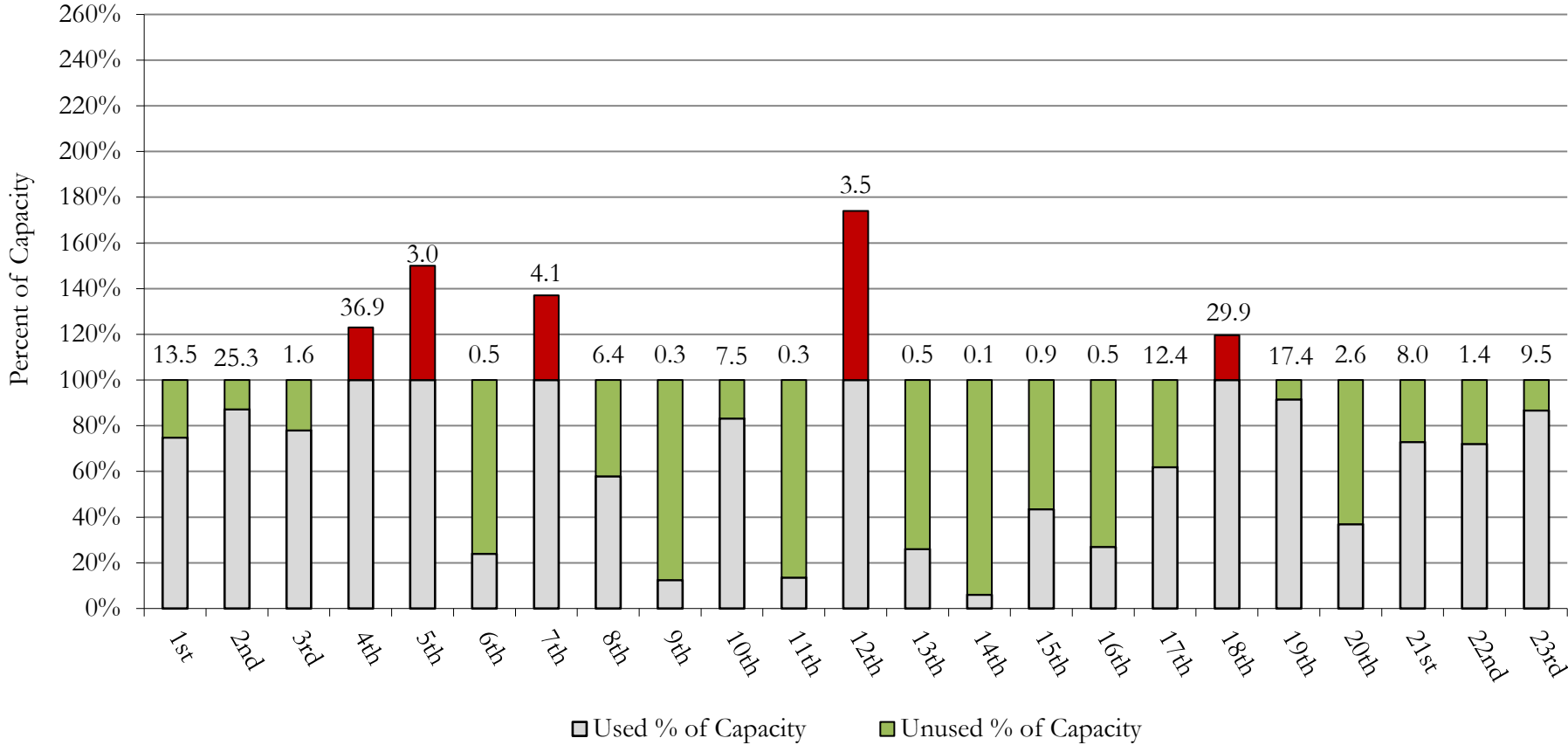
<sup>4</sup> Comprised of Douglas, Elbert, and Lincoln Counties, the 23rd Judicial District was established on January 14th, 2025, following departure from the 18th Judicial District (Arapahoe).

<sup>5</sup> Due to tracking limitations, the Detention ADP for these youth is not associated with one particular Judicial District.

# January 2026 DYS Population Report

## III. Detention Program Services Continued B. Unused Percent of Capacity by Judicial District

Monthly Detention Services  
Capacity Utilization by Judicial District <sup>1</sup>



<sup>1</sup> Monthly detention ADP is expressed by "Used % of Capacity" and is reported as the value above each bar for each Judicial District.

# January 2026 DYS Population Report

## III. Detention Program Services Continued

### C. Maximum Youth Served by Judicial District<sup>1</sup>

Region	JD	Detention Capacity <sup>4</sup>	Maximum Youth Served on a Single Day <sup>2,3</sup>					
			Detention ADP		January 2026		YTD	
			January 2026	YTD	Number of Youth	% of Detention Capacity	Number of Youth	% of Detention Capacity
<i>Central Region</i>								
	1st	18	13.5	12.5	18	100.0%	20	111.1%
	2nd	29	25.3	27.1	34	117.2%	36	124.1%
	5th	2	3.0	3.3	3	150.0%	5	250.0%
	18th	25	29.9	26.9	34	136.0%	36	144.0%
	23rd <sup>5</sup>	11	9.5	6.3	13	118.2%	13	118.2%
<b>Central Region</b>		<b>85</b>	<b>81.2</b>	<b>76.0</b>	<b>94</b>	<b>110.6%</b>	<b>94</b>	<b>110.6%</b>
<i>Northeast Region</i>								
	8th	11	6.4	5.9	12	109.1%	12	109.1%
	13th	2	0.5	0.8	2	100.0%	3	150.0%
	17th	20	12.4	17.3	16	80.0%	27	135.0%
	19th	19	17.4	12.8	22	115.8%	22	115.8%
	20th	7	2.6	3.1	3	42.9%	8	114.3%
<b>Northeast Region</b>		<b>59</b>	<b>39.2</b>	<b>39.9</b>	<b>43</b>	<b>72.9%</b>	<b>50</b>	<b>84.7%</b>
<i>Southern Region</i>								
	3rd	2	1.6	0.6	2	100.0%	2	100.0%
	4th	30	36.9	40.4	40	133.3%	49	163.3%
	10th	9	7.5	7.2	12	133.3%	12	133.3%
	11th	2	0.3	0.4	1	50.0%	1	50.0%
	12th	2	3.5	2.2	5	250.0%	5	250.0%
	15th	2	0.9	0.3	1	50.0%	2	100.0%
	16th	2	0.5	0.4	1	50.0%	3	150.0%
<b>Southern Region</b>		<b>49</b>	<b>51.1</b>	<b>51.4</b>	<b>58</b>	<b>118.4%</b>	<b>58</b>	<b>118.4%</b>
<i>Western Region</i>								
	6th	2	0.5	2.0	1	50.0%	5	250.0%
	7th	3	4.1	3.3	5	166.7%	6	200.0%
	9th	2	0.3	0.7	1	50.0%	3	150.0%
	14th	2	0.1	0.2	1	50.0%	1	50.0%
	21st	11	8.0	7.5	12	109.1%	14	127.3%
	22nd	2	1.4	2.5	2	100.0%	6	300.0%
<b>Western Region</b>		<b>22</b>	<b>14.4</b>	<b>16.2</b>	<b>21</b>	<b>95.5%</b>	<b>23</b>	<b>104.5%</b>
<i>Missing JD or Multiple JDs</i>			0.0	0.1				
<b>Statewide</b>		<b>215</b>	<b>186.0</b>	<b>183.5</b>	<b>200</b>	<b>93.0%</b>	<b>210</b>	<b>97.7%</b>

<sup>1</sup> Maximum youth served is the highest number of youth in detention on a single day during the month or fiscal year.

<sup>2</sup> Regional figures are not the sum of Judicial Districts, but represent the maximum count on one day for the entire region.

<sup>3</sup> State figures are not the sum of regional figures, but represent the maximum count on one day for the entire state.

<sup>4</sup> Judicial District bed-capacity limits reflect allocations for FY 2025-26 as of July 1, 2025.

<sup>5</sup> Comprised of Douglas, Elbert, and Lincoln Counties, the 23rd Judicial District was established on January 14th, 2025, following departure from the 18th Judicial District (Arapahoe).

# January 2026 DYS Population Report

## III. Detention Program Services Continued

### D. Length of Stay (LOS) by Judicial District

Region	JD	YTD Detention Releases	YTD LOS (days)	LOS (days) Compared to State AVG
<i>Central Region</i>				
	1st	125	20.7	-6.1
	2nd	224	32.2	5.3
	5th	13	45.0	18.2
	18th	236	25.5	-1.3
	23rd <sup>1</sup>	73	12.0	-14.8
<b>Central Total</b>		<b>671</b>	<b>25.8</b>	<b>-1.1</b>
<i>Northeast Region</i>				
	8th	61	17.3	-9.5
	13th	18	9.4	-17.5
	17th	136	32.4	5.6
	19th	119	21.1	-5.7
	20th	29	20.9	-5.9
<b>Northeast Total</b>		<b>363</b>	<b>24.1</b>	<b>-2.7</b>
<i>Southern Region</i>				
	3rd	5	8.2	-18.7
	4th	245	30.9	4.1
	10th	64	33.8	7.0
	11th	5	22.7	-4.1
	12th	13	33.3	6.5
	15th	6	9.9	-16.9
	16th	10	6.4	-20.4
<b>Southern Total</b>		<b>348</b>	<b>30.0</b>	<b>3.2</b>
<i>Western Region</i>				
	6th	12	55.6	28.8
	7th	13	14.4	-12.4
	9th	10	15.5	-11.3
	14th	2	22.9	-3.9
	21st	81	19.1	-7.8
	22nd	15	32.4	5.5
<b>Western Total</b>		<b>133</b>	<b>23.2</b>	<b>-3.6</b>
<b>Statewide Total</b>		<b>1,477</b>	<b>26.8</b>	<b>-</b>

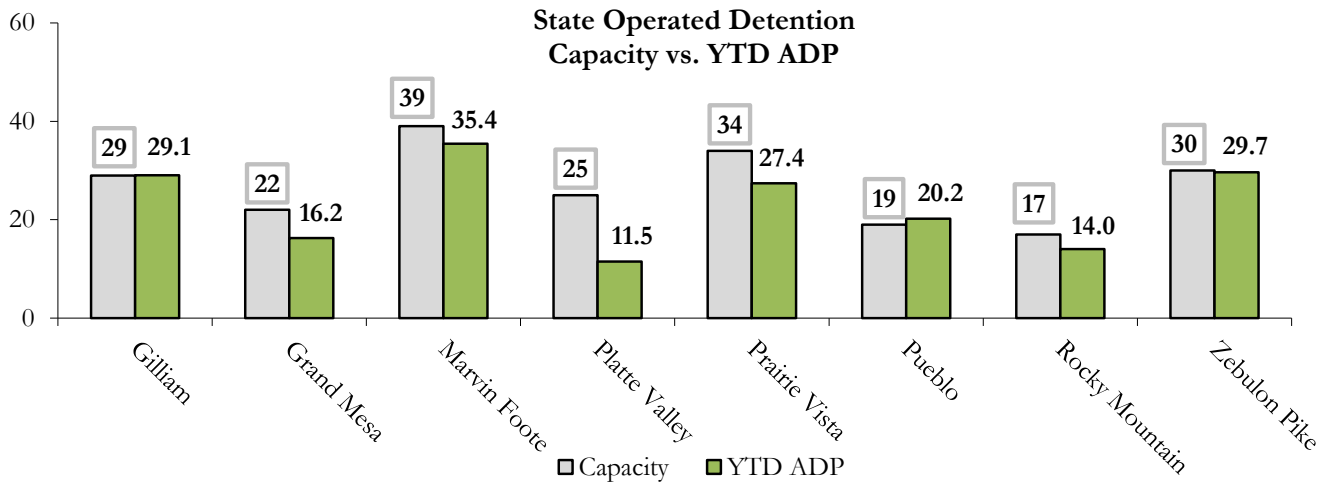
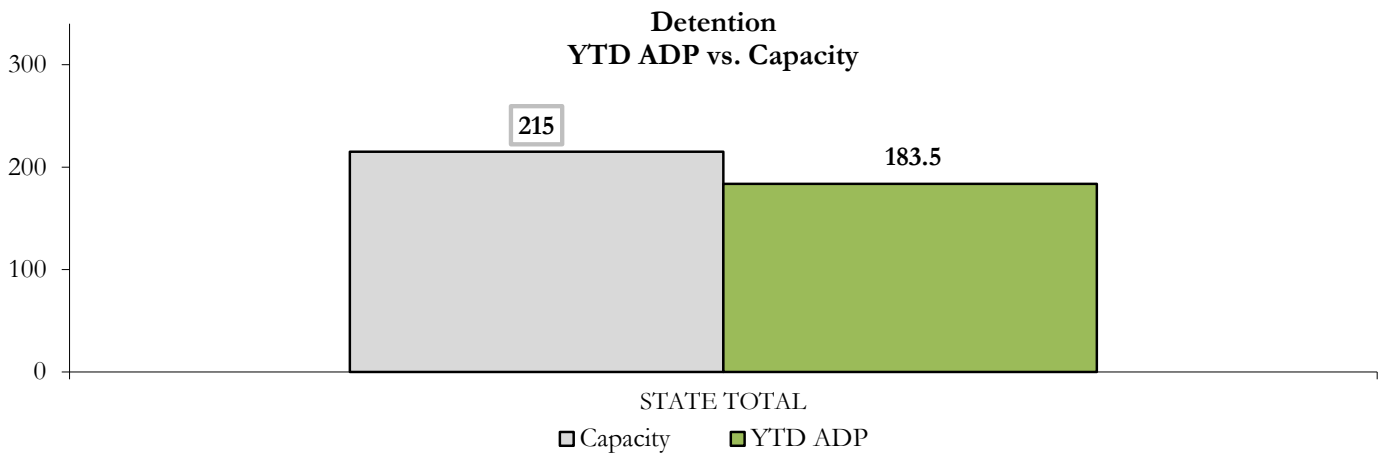
<sup>1</sup> Comprised of Douglas, Elbert, and Lincoln Counties, the 23rd Judicial District was established on January 14th, 2025, following departure from the 18th Judicial District (Arapahoe).

# January 2026 DYS Population Report

## III. Detention Program Services Continued

### E. Detention Data & Capacity by Youth Center

State-Operated Detention							
Youth Center	Operating Capacity <sup>1</sup>	Average Daily Population			New Admissions		LOS (days)
		Monthly	YTD	YTD % of Cap	Monthly	YTD	YTD
Rocky Mountain	17	13.8	14.0	82.6%	17	105	28.3
Gilliam	29	28.0	29.1	100.2%	39	225	33.0
Grand Mesa	22	14.5	16.2	73.8%	14	133	23.7
Marvin Foote	39	40.6	35.4	90.8%	47	340	22.4
Platte Valley	25	11.4	11.5	46.0%	24	143	17.6
Prairie Vista	34	26.1	27.4	80.6%	35	210	29.5
Pueblo	19	21.1	20.2	106.4%	30	187	25.9
Zebulon Pike	30	30.4	29.7	98.8%	18	149	35.0
<b>State Total</b>	<b>215</b>	<b>186.0</b>	<b>183.5</b>	<b>85.4%</b>	<b>224</b>	<b>1,492</b>	<b>26.8</b>



<sup>1</sup> Youth Center bed-capacity limits reflect allocations for FY 2025-26 as of July 1, 2025.

# January 2026

## DYS Population Report

### III. Detention Program Services Continued

#### F. Detention Data by Region

Youth Center & Region	Operating Capacity <sup>1</sup>	Maximum Count <sup>2</sup>			ADP
		January 2026	YTD	% of Capacity YTD	YTD
<i>Central Region</i>					
Gilliam	29	38	38	131.0%	29.1
Marvin Foote	39	44	44	112.8%	35.4
Rocky Mountain	17	17	20	117.6%	14.0
<b>Central Total</b>	<b>85</b>	<b>94</b>	<b>94</b>	<b>110.6%</b>	<b>78.5</b>
<i>Northeast Region</i>					
Platte Valley	25	15	18	72.0%	11.5
Prairie Vista	34	31	36	105.9%	27.4
<b>Northeast Total</b>	<b>59</b>	<b>43</b>	<b>50</b>	<b>84.7%</b>	<b>38.9</b>
<i>Southern Region</i>					
Pueblo	19	27	27	142.1%	20.2
Zebulon Pike	30	31	32	106.7%	29.7
<b>Southern Total</b>	<b>49</b>	<b>58</b>	<b>58</b>	<b>118.4%</b>	<b>49.9</b>
<i>Western Region</i>					
Grand Mesa	22	21	23	104.5%	16.2
<b>Western Total</b>	<b>22</b>	<b>21</b>	<b>23</b>	<b>104.5%</b>	<b>16.2</b>
<b>STATE TOTAL</b>	<b>215</b>	<b>200</b>	<b>210</b>	<b>97.7%</b>	<b>183.5</b>

<sup>1</sup> Youth Center bed-capacity limits reflect allocations for FY 2025-26 as of July 1, 2025.

<sup>2</sup> Region and state maximum count totals are maximum counts of youth in each Region, and throughout Colorado. Maximum count totals are not regional or state sums.

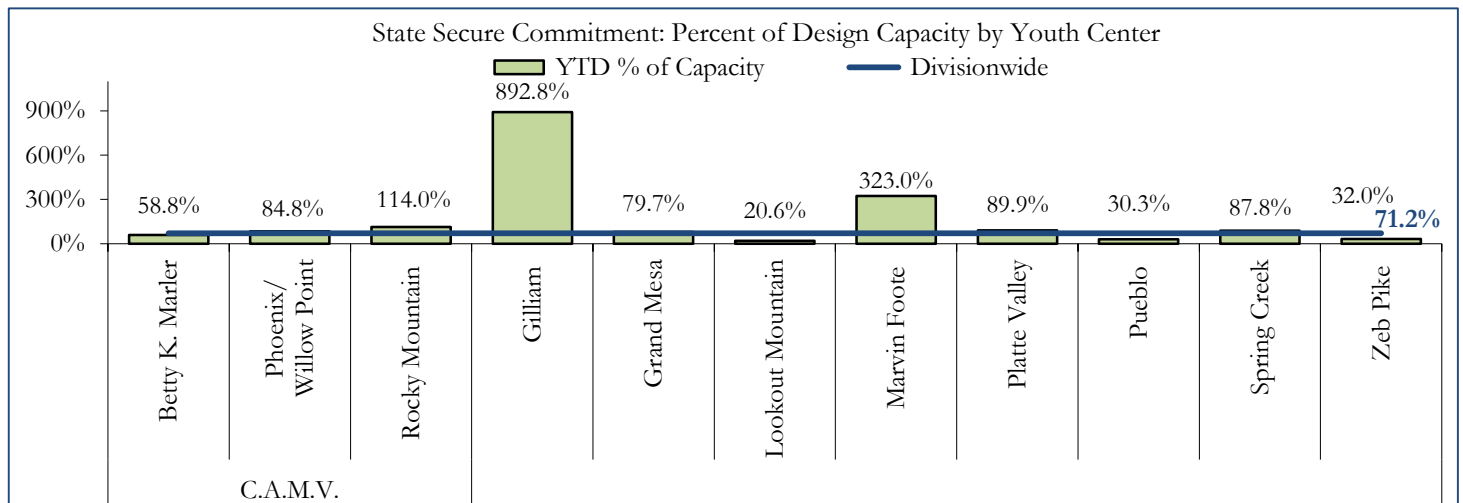
# January 2026

## DYS Population Report

### IV. Commitment Services

#### A. State Secure ADP by Youth Center

STATE SECURE + ASSESSMENT								
Youth Center	Assessment		ADP Secure		Total		Capacity Design	
	Monthly	YTD	Monthly	YTD	Monthly	YTD	Capacity <sup>1</sup>	% of YTD
Campus at Mount View								
Betty K. Marler	1.0	0.6	22.1	17.0	23.0	17.6	30	58.8%
Phoenix	0.0	0.0	31.0	30.5	31.0	30.5	36	84.8%
Rocky Mountain	0.0	0.4	1.7	1.9	1.7	2.3	2	114.0%
Gilliam	0.0	0.4	6.3	8.5	6.3	8.9	1	892.8%
Grand Mesa	1.6	0.9	25.9	25.4	27.5	26.3	33	79.7%
Lookout Mountain <sup>2</sup>	2.4	1.5	12.4	13.4	14.8	14.8	72	20.6%
Marvin Foote	0.0	0.7	4.6	5.7	4.6	6.5	2	323.0%
Platte Valley	0.9	2.7	42.9	44.0	43.8	46.7	52	89.9%
Prairie Vista	0.0	0.4	0.2	0.6	0.2	1.0	-	-
Pueblo	0.0	0.0	0.3	0.3	0.3	0.3	1	30.3%
Spring Creek	3.6	2.1	41.2	41.8	44.9	43.9	50	87.8%
Zebulon Pike	0.0	0.0	0.2	0.3	0.2	0.3	1	32.0%
<b>Assessment Total</b>	<b>9.5</b>	<b>9.8</b>	<b>-</b>	<b>-</b>	<b>9.5</b>	<b>9.8</b>	<b>30</b>	
<b>Secure Total</b>	<b>-</b>	<b>-</b>	<b>188.8</b>	<b>189.5</b>	<b>188.8</b>	<b>189.5</b>	<b>255</b>	
<b>STATE SECURE TOTAL</b>					<b>198.3</b>	<b>199.2</b>	<b>280</b>	<b>71.2%</b>



<sup>1</sup> Youth center bed-capacity design limits reflect allocations for FY 2025-26 as of July 1, 2025.

<sup>2</sup> Beginning July 1, 2025, *Aspire*, *Golden Peak*, and *Summit* converged to a single Youth Center: *Lookout Mountain YSC*.

# January 2026 DYS Population Report

## IV. Commitment Services Continued

### B. Contract, Community, & Other Residential ADP by Youth Center

Youth Center/Program	ADP	
	Monthly	YTD
<b>CONTRACT: STAFF SUPERVISED</b>		
Alternative Homes For Youth - Greeley	13.3	12.4
Gateway Residential Program - Delta	1.0	2.6
Third Way Center - Lowry	0.0	1.4
<b>Staff Supervised Subtotal</b>	<b>14.3</b>	<b>16.4</b>
<b>CONTRACT: COMMUNITY RESIDENTIAL</b>		
Ariel Clinical Services	1.3	1.0
Mt Evans Qualifying House	7.4	8.3
Third Way Center, Lincoln	1.2	2.8
Third Way Center, Pontiac	0.0	0.3
Third Way Center, York	2.0	1.2
<b>Community Residential Subtotal</b>	<b>12.0</b>	<b>13.5</b>
<b>(Contract) Staff Supervised + Community Subtotal</b>	<b>26.3</b>	<b>29.9</b>
<b>OTHER RESIDENTIAL</b>		
Hospital	0.0	0.1
Residential Drug/Alcohol Program	0.8	0.5
Residential Mental Health Program	0.0	0.1
Residential Work Program	0.0	0.1
Shelter Care (short term)	1.4	0.8
<b>Other Residential Subtotal</b>	<b>2.1</b>	<b>1.6</b>
<i>Trails Corrections Currently in Progress</i>	<i>0.3</i>	<i>0.0</i>
<b>COMMITTED RESIDENTIAL TOTAL</b>	<b>227.0</b>	<b>230.7</b>

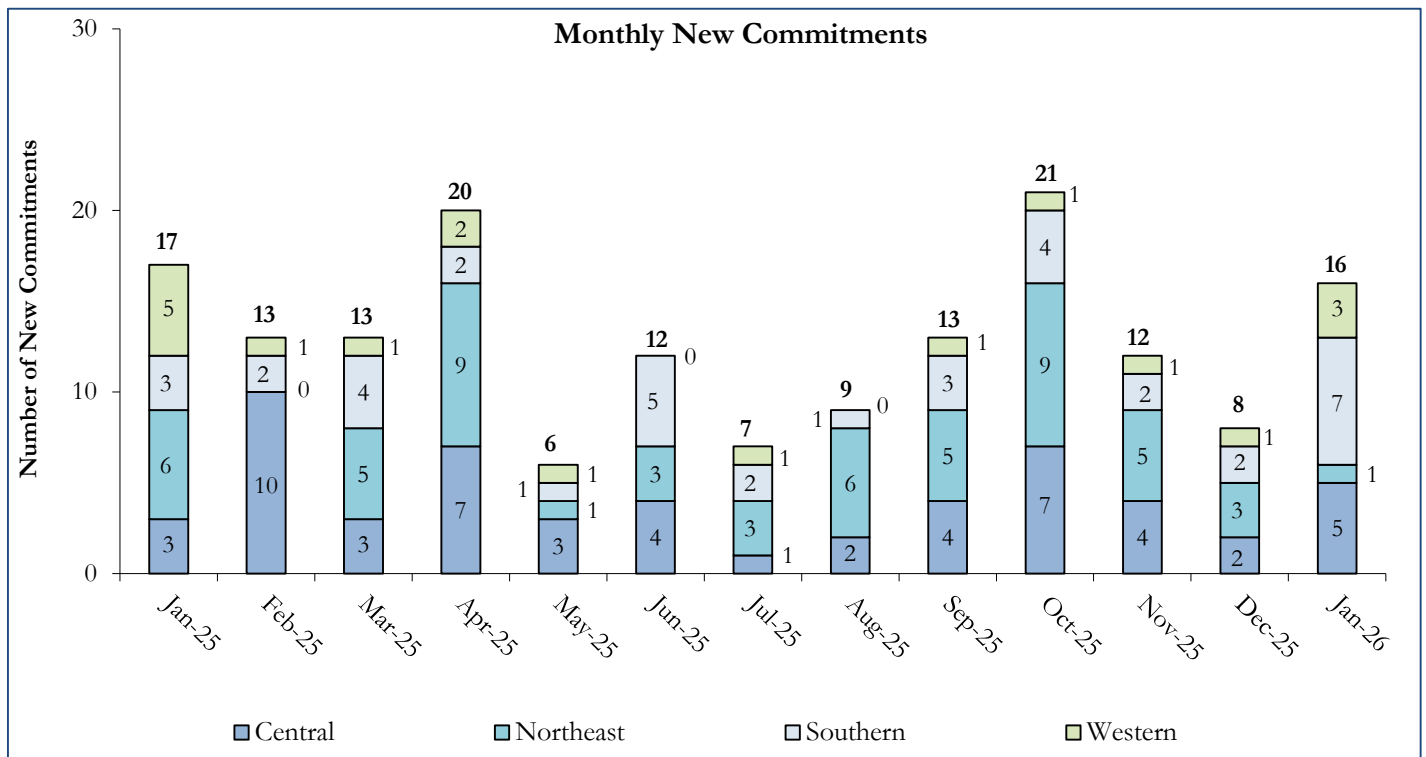
# January 2026 DYS Population Report

## V. Commitment ADP and New Commitments

### A. Commitment ADP and New Commitments

COMMITMENT ADP				
Region	January	% Change from Prior Month	YTD	% Change from Prior FY
Central	83.6	-2.4%	84.6	-21.7%
Northeast	68.2	-8.8%	69.5	-0.1%
Southern	45.6	0.9%	45.7	-24.6%
Western	29.6	3.1%	31.0	-8.9%
<b>Commitment ADP</b>	<b>227.0</b>	<b>-3.1%</b>	<b>230.7</b>	<b>-15.2%</b>

NEW COMMITMENTS					
Region	FY 25-26		FY 24-25		% Change from last YTD
	January	YTD	January	YTD	
Central	5	26	3	44	-40.9%
Northeast	1	33	6	31	6.5%
Southern	7	21	3	26	-19.2%
Western	3	10	5	14	-28.6%
<b>TOTAL</b>	<b>16</b>	<b>90</b>	<b>17</b>	<b>115</b>	<b>-21.7%</b>



# January 2026 DYS Population Report

## V. Commitment ADP and New Commitments Continued

### B. New Commitments by Judicial District

Region	JD <sup>1</sup>	2026 Population Estimates <sup>2</sup>	ADP <sup>3</sup>		New Commitments		
			January 2026	YTD	January 2026	YTD	YTD Rate <sup>4</sup>
<i>Central Region</i>							
	1st	51,087	19.4	16.6	2	9	1.8
	2nd	54,544	29.1	28.1	1	10	1.8
	5th	8,824	2.0	1.8	0	1	1.1
	18th	68,920	36.7	36.7	1	12	1.7
	23rd <sup>5</sup>	51,398	6.7	8.1	2	2	0.4
<b>Central Total</b>		<b>234,773</b>	<b>93.8</b>	<b>91.3</b>	<b>6</b>	<b>34</b>	<b>1.4</b>
<i>Northeast Region</i>							
	8th	34,422	11.5	12.6	0	5	1.5
	13th	8,779	1.0	2.1	0	0	0.0
	17th	69,647	17.1	19.2	0	8	1.1
	19th	44,213	27.3	26.9	0	13	2.9
	20th	27,396	4.6	5.2	0	1	0.4
<b>Northeast Total</b>		<b>184,457</b>	<b>61.6</b>	<b>65.9</b>	<b>0</b>	<b>27</b>	<b>1.5</b>
<i>Southern Region</i>							
	3rd	1,626	0.0	0.0	0	0	0.0
	4th	76,987	32.2	32.2	4	14	1.8
	10th	16,613	10.6	11.4	2	5	3.0
	11th	6,743	0.0	0.0	0	0	0.0
	12th	4,906	1.8	1.1	1	1	2.0
	15th	2,090	0.0	0.4	0	0	0.0
	16th	2,597	1.0	1.0	0	0	0.0
<b>Southern Total</b>		<b>111,562</b>	<b>45.6</b>	<b>46.1</b>	<b>7</b>	<b>20</b>	<b>1.8</b>
<i>Western Region</i>							
	6th	6,555	3.7	2.4	1	3	4.6
	7th	9,637	2.6	1.6	0	2	2.1
	9th	9,121	1.0	1.0	0	0	0.0
	14th	4,898	1.0	1.0	0	0	0.0
	21st	15,129	13.2	16.7	1	3	2.0
	22nd	2,739	4.5	4.7	1	1	3.7
<b>Western Total</b>		<b>48,079</b>	<b>26.0</b>	<b>27.4</b>	<b>3</b>	<b>9</b>	<b>1.9</b>
<b>Statewide Total</b>		<b>578,871</b>	<b>227.0</b>	<b>230.7</b>	<b>16</b>	<b>90</b>	<b>1.6</b>

<sup>1</sup> JD represents the Judicial District in which the client was committed. Regional totals are a sum of their respective Judicial Districts.

<sup>2</sup> Source: DOLA Estimates.

<sup>3</sup> Due to rounding, totals shown may not be an exact sum of the subtotals.

<sup>4</sup> Per 10,000 youth in the population.

<sup>5</sup> Comprised of Douglas, Elbert, and Lincoln Counties, the 23rd Judicial District was established on January 14th, 2025, following departure from the 18th Judicial District (Arapahoe).

# January 2026 DYS Population Report

## VI. Parole Services

### PAROLE ADP

Region	Monthly	YTD		% Change from Prior Year
		FY 25-26	FY 24-25	
Central	31.1	30.8	43.3	-28.8%
Northeast	26.6	27.9	27.6	1.0%
Southern	18.8	24.8	15.4	60.7%
Western	8.3	10.6	15.2	-30.5%
<b>Total</b>	<b>84.9</b>	<b>94.2</b>	<b>101.6</b>	<b>-7.3%</b>

Region	Parole Intakes		Discharges		LOS
	Monthly	YTD	Monthly	YTD	
Central	6	26	5	40	7.4
Northeast	7	36	2	31	6.0
Southern	5	19	3	36	6.8
Western	3	10	4	21	6.7
<b>Total</b>	<b>21</b>	<b>91</b>	<b>14</b>	<b>128</b>	<b>6.8</b>

Monthly Parole ADP

