

December 2025 FY 2025-2026 MONTHLY POPULATION REPORT

Prepared by the Division of Youth Services (DYS)
Data Management and Analysis
2/11/2026

This document can be provided in a fully accessible format upon request. Please visit the [Accessibility at CDHS](#) webpage where you can submit your request for accessibility accommodation via the [CDHS Digital Accessibility and Support Form](#).



COLORADO

Department of Human Services

Division of Youth Services

December 2025

DYS Population Report

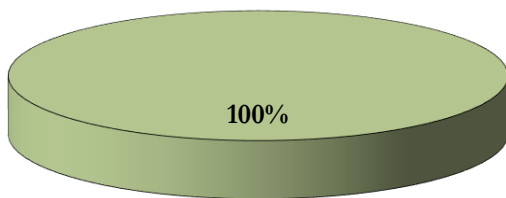
I.	Summary Population Data	1
II.	Population Trends	2
III.	Detention Program Services	
	A. Detention ADP by Judicial District	3
	B. Unused Percent of Capacity by Judicial District	4
	C. Maximum Youth Served by Judicial District	5
	D. Length of Stay (LOS) by Judicial District	6
	E. Detention Data & Capacity by Youth Center	7
	F. Detention Data by Region	8
	G. YTD Detention ADP & Ethnicity by Judicial District	9
IV.	Commitment Services	
	A. State Secure ADP by Youth Center	10
	B. Contract, Community, & Other Residential ADP by Youth Center	11
V.	Commitment ADP and New Commitments	
	A. Commitment ADP and New Commitments	12
	B. New Commitments by Judicial District	13
VI.	Parole Services	14

December 2025 DYS Population Report

I. Summary Population Data

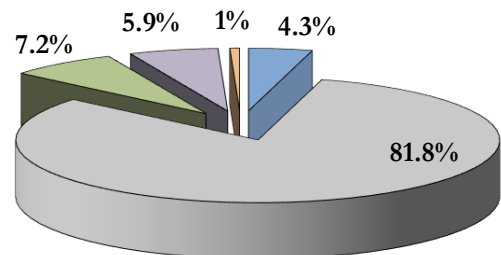
	December 2025		YTD		
	ADP	% change	ADP	LOS	
DETAINED YOUTH					
State-Operated	174.9	-8.4%	183.1	26.0	days
Total Detained	174.9	-8.4%	183.1	26.0	days
COMMITTED YOUTH					
Assessment	5.9	-61.6%	9.8	23.5	days
Secure	196.8	0.4%	189.4	13.8	months
Staff Supervised	16.5	0.8%	16.8	5.6	months
Community Residential	13.2	-2.5%	13.7	3.3	months
Other Residential	1.0	41.0%	1.5	1.5	months
<i>Trails Corrections Currently in Progress</i>	<i>1.0</i>		<i>0.3</i>		
Total Committed Residential	234.4	-1.0%	231.6	15.3	months
<i>Committed Residential w/o Boulder</i>	<i>234.4</i>	<i>-1.0%</i>	<i>231.6</i>		
PAROLED YOUTH					
Total Paroled	81.5	-4.6%	95.3	6.8	months
TOTAL STATEWIDE ADP					
DETENTION	174.9	-8.4%	183.1	26.0	days
COMMITMENT	234.4	-1.0%	231.6	15.3	months
PAROLE	81.5	-4.6%	95.3	6.8	months
STATE TOTAL	490.8	-4.4%	510.0		

Detention ADP YTD¹



■ State-Operated

Commitment ADP YTD¹

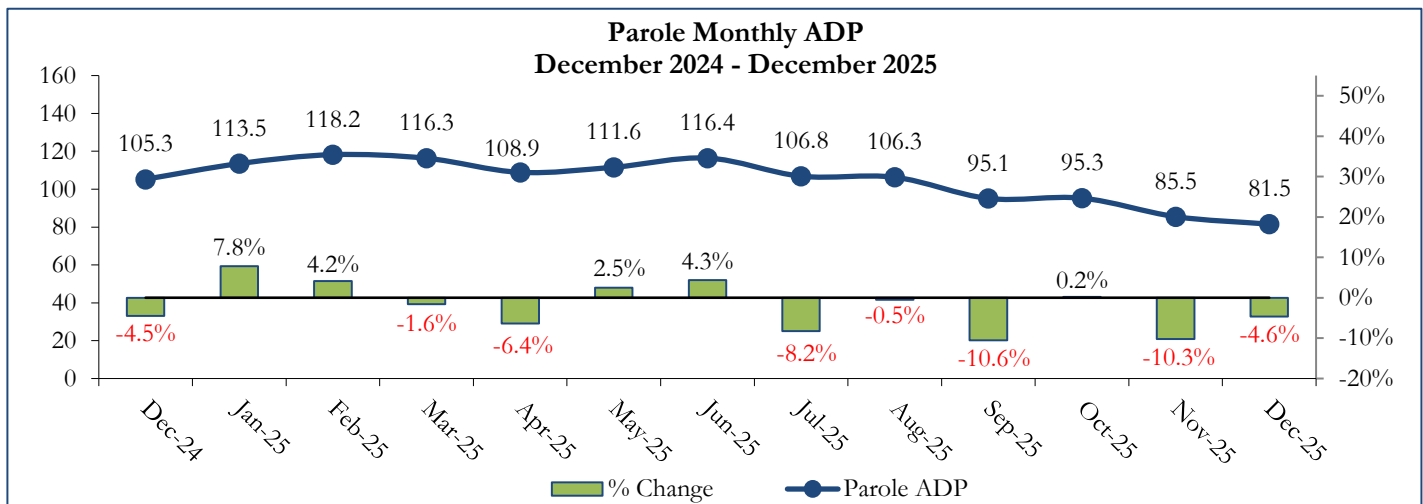
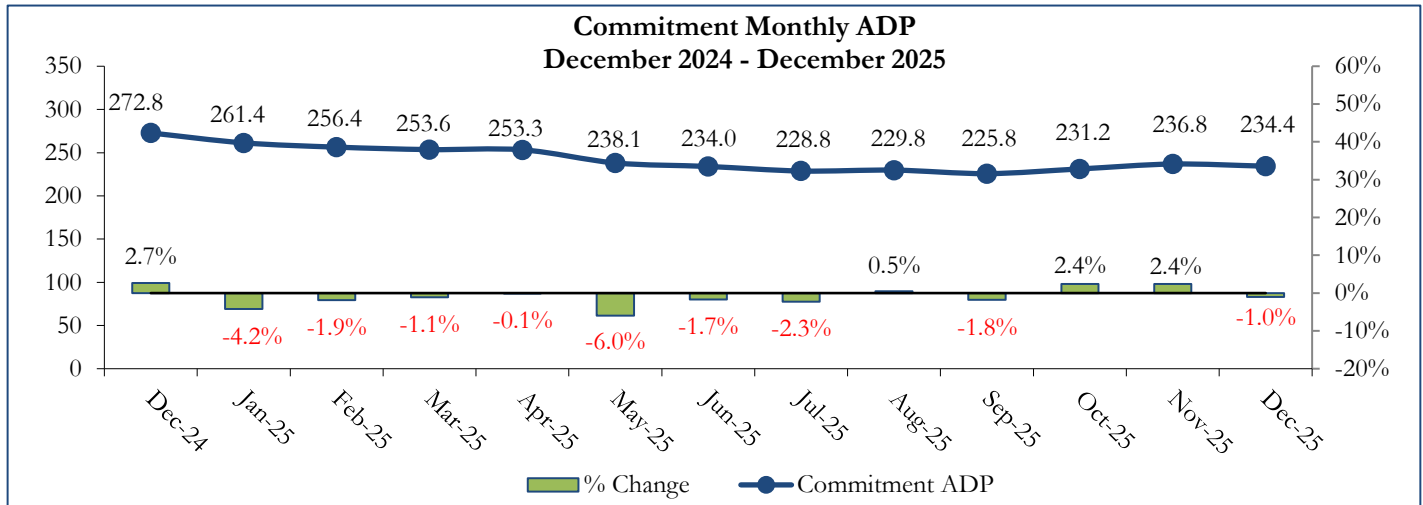
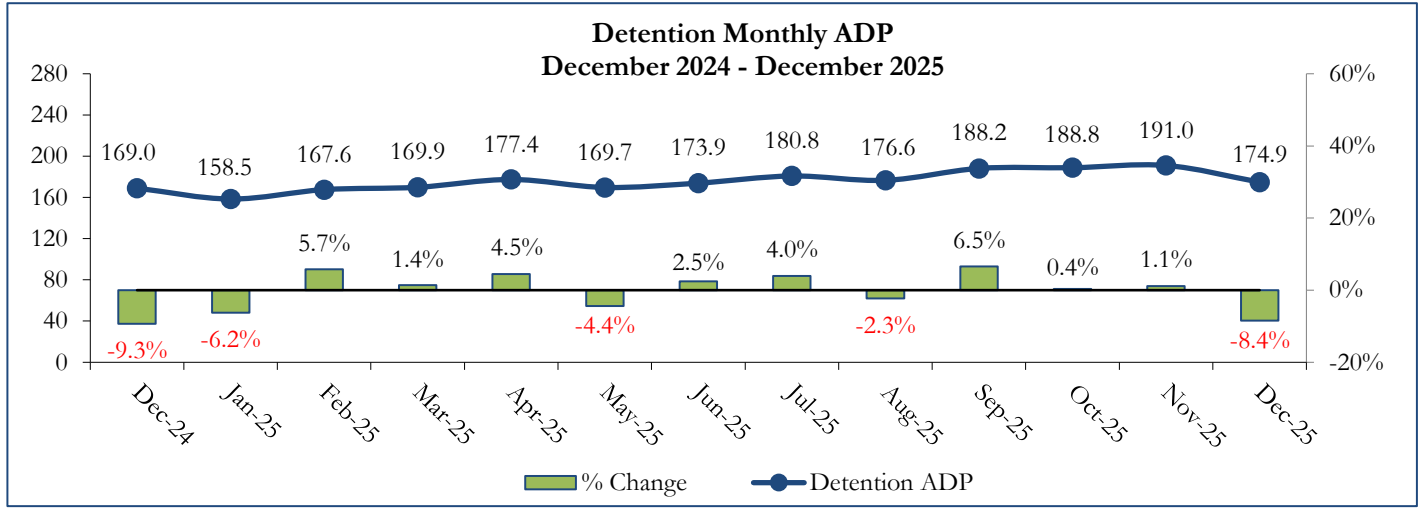


■ Assessment
 ■ Secure
 ■ Staff Supervised
 ■ Community
 ■ Other

¹ Due to rounding, totals may not sum to 100%.

December 2025 DYS Population Report

II. Population Trends



December 2025 DYS Population Report

III. Detention Program Services

A. Detention ADP by Judicial District

Region	JD	Capacity ¹	December 2025		YTD		2026 Population Estimates ²	New Admits		
			ADP	% of Cap	ADP	% of Cap		Monthly	YTD	YTD New Admit Rate ³
<i>Central Region</i>										
	1st	18	12.7	70.6%	12.4	68.6%	51,087	14	102	20.0
	2nd	29	25.7	88.5%	27.5	94.7%	54,544	20	179	32.8
	5th	2	4.1	205.0%	3.3	165.0%	8,824	6	14	15.9
	18th	25	25.8	103.1%	26.3	105.4%	68,920	24	197	28.6
	23rd ⁴	11	7.1	64.2%	5.7	51.8%	51,398	12	66	12.8
Central Total		85	75.3	88.6%	75.1	88.4%	234,773	76	558	23.8
<i>Northeast Region</i>										
	8th	11	5.6	51.3%	5.9	53.4%	34,422	3	49	14.2
	13th	2	0.8	39.0%	0.9	43.0%	8,779	3	15	17.1
	17th	20	15.6	78.2%	18.1	90.6%	69,647	8	113	16.2
	19th	19	11.1	58.2%	12.0	63.2%	44,213	15	95	21.5
	20th	7	2.7	39.0%	3.1	44.9%	27,396	4	24	8.8
Northeast Total		59	35.8	60.7%	40.0	67.8%	184,457	33	296	16.0
<i>Southern Region</i>										
	3rd	2	1.7	85.0%	0.4	21.5%	1,626	2	4	24.6
	4th	30	35.9	119.6%	41.0	136.6%	76,987	26	210	27.3
	10th	9	7.4	82.7%	7.1	78.9%	16,613	5	51	30.7
	11th	2	0.0	0.0%	0.4	20.5%	6,743	0	2	3.0
	12th	2	3.9	196.0%	2.0	100.0%	4,906	4	12	24.5
	15th	2	0.1	3.5%	0.2	9.0%	2,090	1	6	28.7
	16th	2	0.0	0.0%	0.3	16.5%	2,597	0	9	34.7
Southern Total		49	49.0	100.0%	51.4	104.9%	111,562	38	294	26.4
<i>Western Region</i>										
	6th	2	1.2	61.5%	2.2	111.5%	6,555	1	10	15.3
	7th	3	4.3	144.0%	3.2	107.0%	9,637	0	14	14.5
	9th	2	0.3	12.5%	0.8	39.0%	9,121	3	9	9.9
	14th	2	1.0	50.0%	0.2	11.5%	4,898	0	2	4.1
	21st	11	5.9	53.5%	7.4	67.2%	15,129	7	71	46.9
	22nd	2	2.0	100.0%	2.7	132.5%	2,739	0	14	51.1
Western Total		22	14.7	66.8%	16.5	75.0%	48,079	11	120	25.0
Unknown⁵			0.04		0.1			0	0	
Statewide Total		215	174.9	81.3%	183.1	85.2%	578,871	158	1,268	21.9

¹ Judicial District bed-capacity limits reflect allocations for FY 2025-26 as of July 1, 2025.

² Source: DOLA Estimates.

³ Per 10,000 youth in the population.

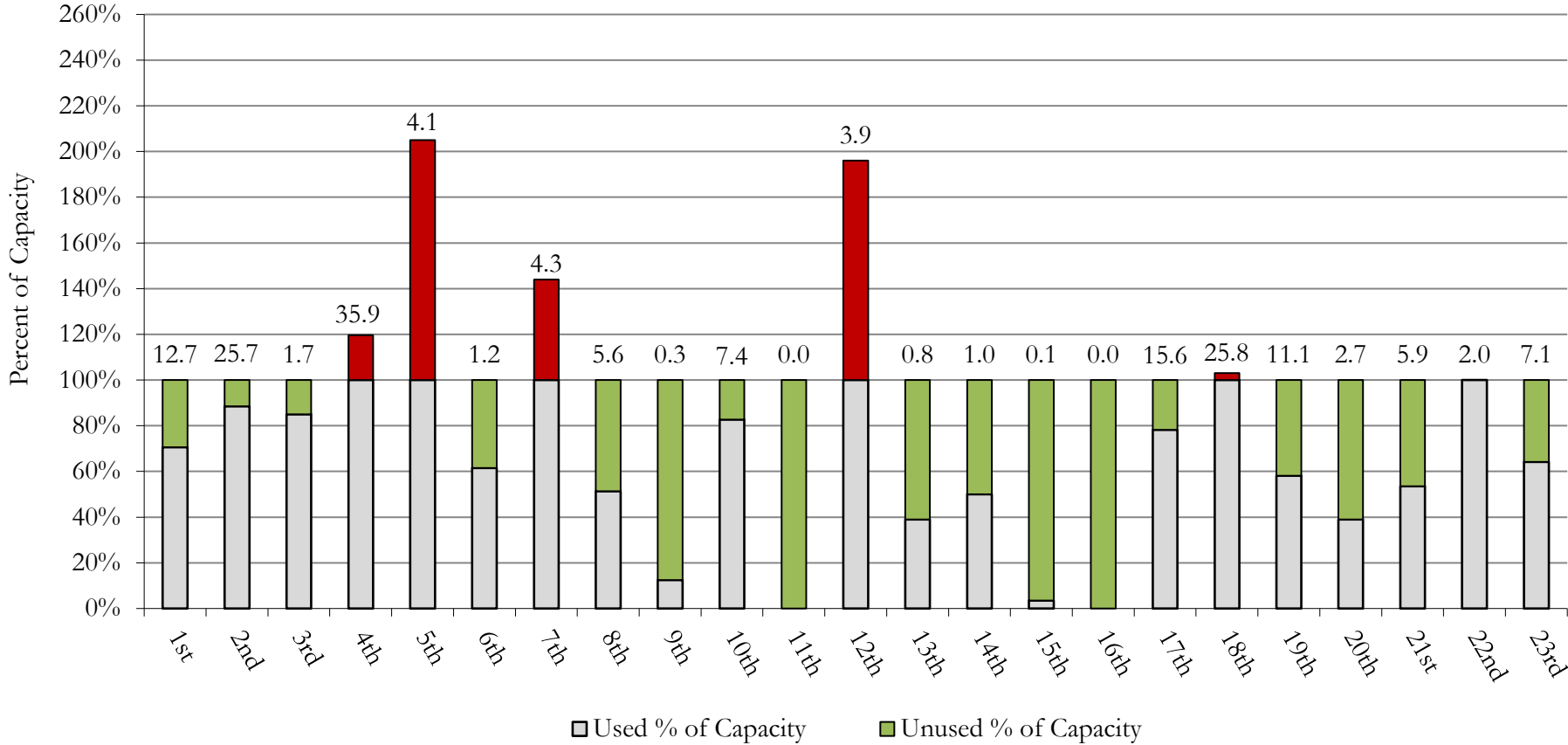
⁴ Comprised of Douglas, Elbert, and Lincoln Counties, the 23rd Judicial District was established on January 14th, 2025, following departure from the 18th Judicial District (Arapahoe).

⁵ Due to tracking limitations, the Detention ADP for these youth is not associated with one particular Judicial District.

December 2025 DYS Population Report

III. Detention Program Services Continued B. Unused Percent of Capacity by Judicial District

Monthly Detention Services
Capacity Utilization by Judicial District ¹



¹ Monthly detention ADP is expressed by "Used % of Capacity" and is reported as the value above each bar for each Judicial District.

December 2025 DYS Population Report

III. Detention Program Services Continued

C. Maximum Youth Served by Judicial District¹

Region	JD	Detention Capacity ⁴	Detention ADP		Maximum Youth Served on a Single Day ^{2,3}			
			December 2025	YTD	December 2025		YTD	
					Number of Youth	% of Detention Capacity	Number of Youth	% of Detention Capacity
<i>Central Region</i>								
	1st	18	12.7	12.4	14	77.8%	20	111.1%
	2nd	29	25.7	27.5	31	106.9%	36	124.1%
	5th	2	4.1	3.3	5	250.0%	5	250.0%
	18th	25	25.8	26.3	29	116.0%	36	144.0%
	23rd ⁵	11	7.1	5.7	11	100.0%	11	100.0%
Central Region		85	75.3	75.1	86	101.2%	91	107.1%
<i>Northeast Region</i>								
	8th	11	5.6	5.9	8	72.7%	10	90.9%
	13th	2	0.8	0.9	2	100.0%	3	150.0%
	17th	20	15.6	18.1	20	100.0%	27	135.0%
	19th	19	11.1	12.0	13	68.4%	16	84.2%
	20th	7	2.7	3.1	4	57.1%	8	114.3%
Northeast Region		59	35.8	40.0	43	72.9%	50	84.7%
<i>Southern Region</i>								
	3rd	2	1.7	0.4	2	100.0%	2	100.0%
	4th	30	35.9	41.0	44	146.7%	49	163.3%
	10th	9	7.4	7.1	11	122.2%	11	122.2%
	11th	2	0.0	0.4	0	0.0%	1	50.0%
	12th	2	3.9	2.0	5	250.0%	5	250.0%
	15th	2	0.1	0.2	1	50.0%	2	100.0%
	16th	2	0.0	0.3	0	0.0%	3	150.0%
Southern Region		49	49.0	51.4	56	114.3%	58	118.4%
<i>Western Region</i>								
	6th	2	1.2	2.2	3	150.0%	5	250.0%
	7th	3	4.3	3.2	5	166.7%	6	200.0%
	9th	2	0.3	0.8	2	100.0%	3	150.0%
	14th	2	1.0	0.2	1	50.0%	1	50.0%
	21st	11	5.9	7.4	9	81.8%	14	127.3%
	22nd	2	2.0	2.7	2	100.0%	6	300.0%
Western Region		22	14.7	16.5	19	86.4%	23	104.5%
<i>Missing JD or Multiple JDs</i>			<i>0.0</i>	<i>0.1</i>				
Statewide		215	174.9	183.1	196	91.2%	210	97.7%

¹ Maximum youth served is the highest number of youth in detention on a single day during the month or fiscal year.

² Regional figures are not the sum of Judicial Districts, but represent the maximum count on one day for the entire region.

³ State figures are not the sum of regional figures, but represent the maximum count on one day for the entire state.

⁴ Judicial District bed-capacity limits reflect allocations for FY 2025-26 as of July 1, 2025.

⁵ Comprised of Douglas, Elbert, and Lincoln Counties, the 23rd Judicial District was established on January 14th, 2025, following departure from the 18th Judicial District (Arapahoe).

December 2025 DYS Population Report

III. Detention Program Services Continued

D. Length of Stay (LOS) by Judicial District

Region	JD	YTD Detention Releases	YTD LOS (days)	LOS (days) Compared to State AVG
<i>Central Region</i>				
	1st	102	20.6	-5.4
	2nd	191	28.6	2.6
	5th	13	45.0	19.0
	18th	203	26.2	0.2
	23rd ¹	62	10.9	-15.1
Central Total		571	24.8	-1.2
<i>Northeast Region</i>				
	8th	51	15.5	-10.5
	13th	15	10.5	-15.5
	17th	125	34.6	8.6
	19th	97	21.8	-4.2
	20th	24	17.6	-8.4
Northeast Total		312	25.0	-0.9
<i>Southern Region</i>				
	3rd	4	5.9	-20.1
	4th	216	31.1	5.1
	10th	50	23.1	-2.9
	11th	3	36.4	10.4
	12th	8	12.0	-14.0
	15th	5	6.1	-19.9
	16th	9	6.8	-19.2
Southern Total		295	27.8	1.8
<i>Western Region</i>				
	6th	11	56.0	30.0
	7th	12	15.3	-10.7
	9th	9	15.9	-10.1
	14th	1	0.9	-25.1
	21st	69	19.2	-6.8
	22nd	14	26.7	0.7
Western Total		116	22.8	-3.2
Statewide Total		1,264	26.0	-

¹ Comprised of Douglas, Elbert, and Lincoln Counties, the 23rd Judicial District was established on January 14th, 2025, following departure from the 18th Judicial District (Arapahoe).

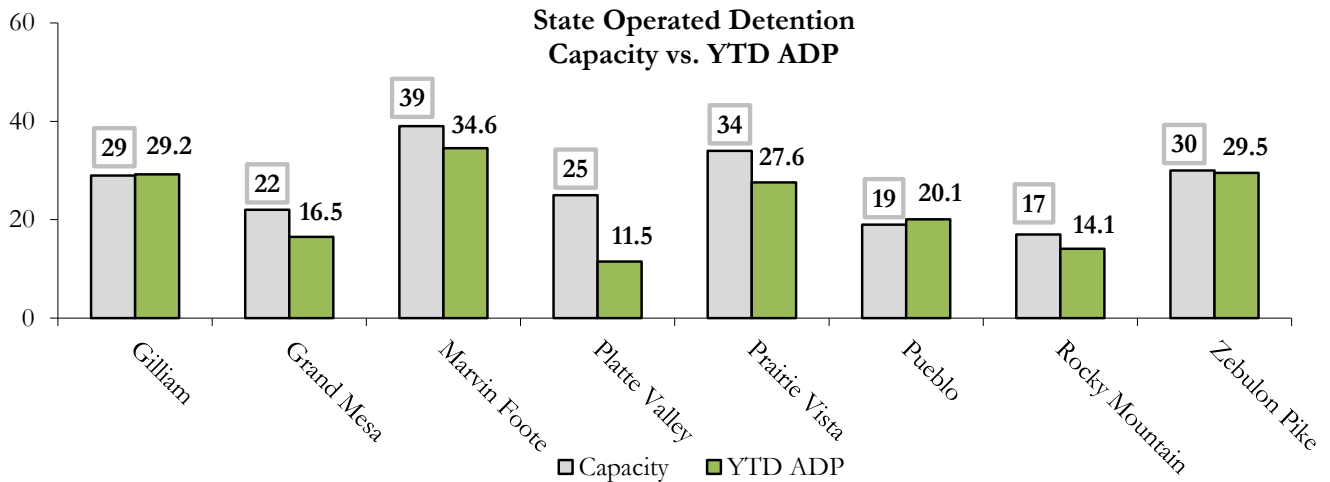
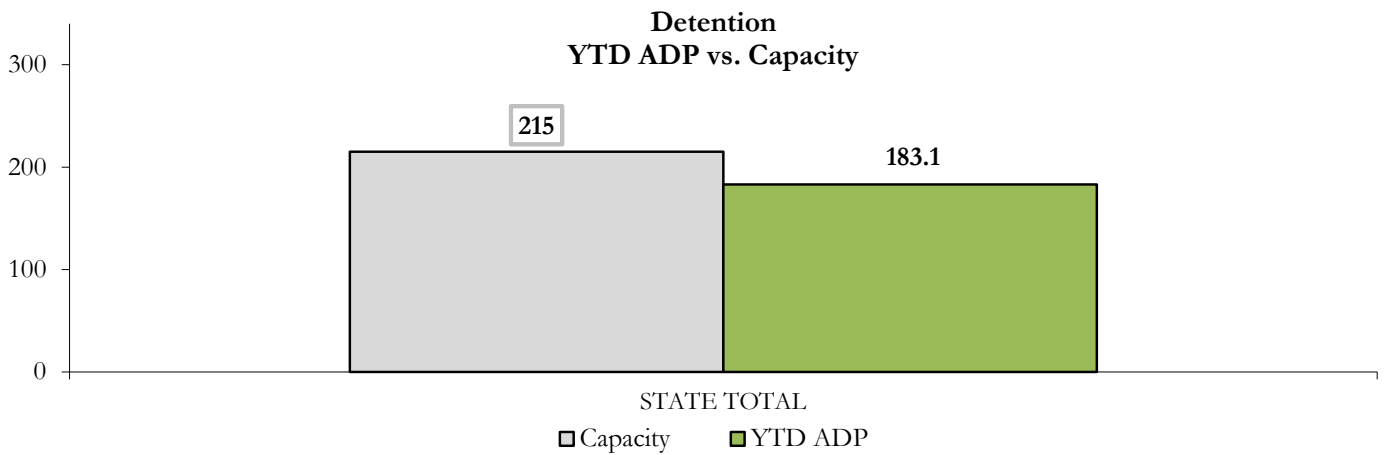
December 2025

DYS Population Report

III. Detention Program Services Continued

E. Detention Data & Capacity by Youth Center

State-Operated Detention							
Youth Center	Operating Capacity ¹	Average Daily Population			New Admissions		LOS (days)
		Monthly	YTD	YTD % of Cap	Monthly	YTD	YTD
Rocky Mountain	17	13.3	14.1	82.8%	15	88	29.1
Gilliam	29	27.0	29.2	100.9%	21	186	29.5
Grand Mesa	22	15.0	16.5	75.1%	12	119	23.5
Marvin Foote	39	37.6	34.6	88.6%	41	293	22.5
Platte Valley	25	8.3	11.5	46.1%	11	119	18.3
Prairie Vista	34	25.3	27.6	81.2%	20	175	30.8
Pueblo	19	19.5	20.1	105.7%	18	157	21.4
Zebulon Pike	30	28.8	29.5	98.4%	20	131	34.8
State Total	215	174.9	183.1	85.2%	158	1,268	26.0



¹ Youth Center bed-capacity limits reflect allocations for FY 2025-26 as of July 1, 2025.

December 2025

DYS Population Report

III. Detention Program Services Continued

F. Detention Data by Region

Youth Center & Region	Operating Capacity ¹	Maximum Count ²			ADP
		December 2025	YTD	% of Capacity YTD	YTD
<i>Central Region</i>					
Gilliam	29	31	38	131.0%	29.2
Marvin Foote	39	43	44	112.8%	34.6
Rocky Mountain	17	16	20	117.6%	14.1
Central Total	85	86	91	107.1%	77.9
<i>Northeast Region</i>					
Platte Valley	25	12	18	72.0%	11.5
Prairie Vista	34	32	36	105.9%	27.6
Northeast Total	59	43	50	84.7%	39.1
<i>Southern Region</i>					
Pueblo	19	24	27	142.1%	20.1
Zebulon Pike	30	32	32	106.7%	29.5
Southern Total	49	56	58	118.4%	49.6
<i>Western Region</i>					
Grand Mesa	22	19	23	104.5%	16.5
Western Total	22	19	23	104.5%	16.5
STATE TOTAL	215	196	210	97.7%	183.1

¹ Youth Center bed-capacity limits reflect allocations for FY 2025-26 as of July 1, 2025.

² Region and state maximum count totals are maximum counts of youth in each Region, and throughout Colorado. Maximum count totals are not regional or state sums.

December 2025 DYS Population Report

III. Detention Program Services Continued

G. YTD Detention ADP & Ethnicity by Judicial District

Region	JD	White		Black		Hispanic / Latinx		Native American / Alaskan Native		Asian		Other		TOTAL	
		ADP	%	ADP	%	ADP	%	ADP	%	ADP	%	ADP	%	ADP	%
Central															
	1st	5.0	40.8%	2.4	19.1%	4.7	38.4%	0.0	0.0%	0.0	0.0%	0.2	1.8%	12.3	100%
	2nd	3.5	12.7%	10.9	39.7%	12.7	46.2%	0.03	0.1%	0.3	1.1%	0.03	0.1%	27.5	100%
	5th	0.02	0.6%	0.01	0.4%	3.3	99.0%	0.0	0.0%	0.0	0.0%	0.0	0.0%	3.3	100%
	18th	4.3	16.5%	10.0	37.8%	8.8	33.6%	0.3	1.1%	0.04	0.2%	2.9	10.8%	26.3	100%
	23rd	4.5	79.7%	0.1	1.0%	0.6	9.7%	0.0	0.0%	0.02	0.3%	0.5	9.3%	5.7	100%
Central Total		17.4	30.1%	23.3	19.6%	30.1	45.4%	0.3	0.2%	0.4	0.3%	3.6	4.4%	75.1	100%
Northeast															
	8th	3.6	62.1%	0.1	1.0%	2.2	36.9%	0.0	0.0%	0.0	0.0%	0.0	0.0%	5.9	100%
	13th	0.7	83.1%	0.09	10.9%	0.04	4.3%	0.0	0.0%	0.0	0.0%	0.01	1.6%	0.9	100%
	17th	4.7	25.9%	2.9	16.0%	9.1	50.0%	0.7	3.7%	0.5	2.8%	0.3	1.4%	18.1	100%
	19th	3.9	32.5%	1.1	9.0%	6.7	56.1%	0.2	1.6%	0.0	0.0%	0.1	0.8%	12.0	100%
	20th	1.0	31.9%	0.1	3.1%	2.0	64.9%	0.0	0.0%	0.0	0.0%	0.0	0.0%	3.1	100%
Northeast Total		14.0	47.1%	4.2	8.0%	20.0	42.4%	0.9	1.1%	0.5	0.6%	0.4	0.8%	40.0	100%
Southern															
	3rd	0.01	1.3%	0.0	0.0%	0.4	91.2%	0.0	0.0%	0.0	0.0%	0.03	7.5%	0.4	100%
	4th	10.2	25.0%	12.8	31.2%	16.1	39.2%	0.0	0.0%	1.8	4.4%	0.1	0.2%	41.0	100%
	10th	1.8	26.0%	0.1	0.9%	5.2	73.2%	0.0	0.0%	0.0	0.0%	0.0	0.0%	7.1	100%
	11th	0.4	100.0%	0.0	0.0%	0.0	0.0%	0.0	0.0%	0.0	0.0%	0.0	0.0%	0.4	100%
	12th	0.1	4.4%	0.0	0.0%	1.9	95.6%	0.0	0.0%	0.0	0.0%	0.0	0.0%	2.0	100%
	15th	0.2	93.2%	0.0	0.0%	0.01	6.8%	0.0	0.0%	0.0	0.0%	0.0	0.0%	0.2	100%
	16th	0.1	30.3%	0.0	0.0%	0.2	69.7%	0.0	0.0%	0.0	0.0%	0.0	0.0%	0.3	100%
Southern Total		12.9	40.0%	12.8	4.6%	23.8	53.7%	0.0	0.0%	1.8	0.6%	0.1	1.1%	51.4	100%
Western															
	6th	1.5	69.0%	0.0	0.0%	0.4	19.2%	0.3	11.8%	0.0	0.0%	0.0	0.0%	2.2	100%
	7th	1.4	44.2%	1.0	31.7%	0.4	11.3%	0.0	0.0%	0.0	0.0%	0.4	12.7%	3.2	100%
	9th	0.6	71.2%	0.0	0.0%	0.2	28.8%	0.0	0.0%	0.0	0.0%	0.0	0.0%	0.8	100%
	14th	0.2	100.0%	0.0	0.0%	0.0	0.0%	0.0	0.0%	0.0	0.0%	0.0	0.0%	0.2	100%
	21st	4.4	60.1%	0.7	9.8%	1.7	23.5%	0.0	0.0%	0.5	6.6%	0.01	0.1%	7.4	100%
	22nd	0.4	15.1%	0.0	0.0%	0.7	26.0%	1.6	58.8%	0.0	0.0%	0.0	0.0%	2.7	100%
Western Total		8.6	59.9%	1.7	6.9%	3.4	18.1%	1.8	11.8%	0.5	1.1%	0.4	2.1%	16.5	100%
	Missing JD Data	0.0		0.0		0.1		0.0		0.0		0.0		0.1	
Statewide Total		52.8	28.8%	42.1	23.0%	77.5	42.3%	3.0	1.7%	3.2	1.7%	4.5	2.5%	183.1	100%

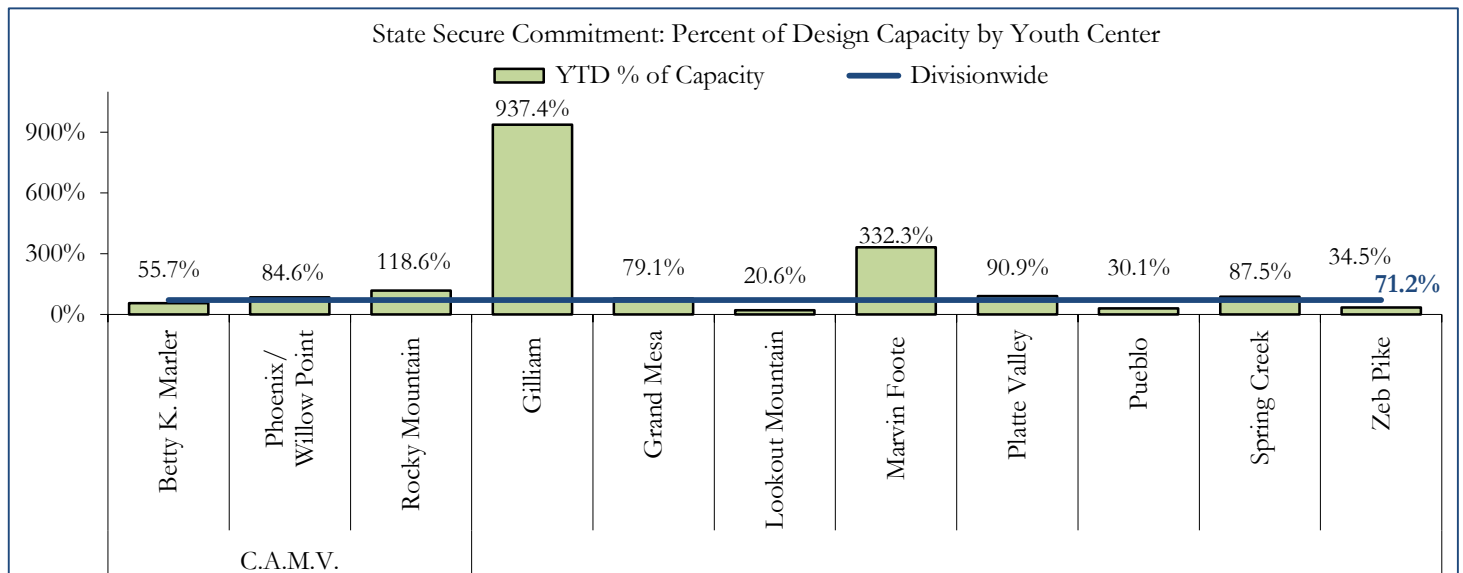
December 2025

DYS Population Report

IV. Commitment Services

A. State Secure ADP by Youth Center

STATE SECURE + ASSESSMENT								
Youth Center	Assessment		ADP Secure		Total		Capacity Design	
	Monthly	YTD	Monthly	YTD	Monthly	YTD	Capacity ¹	% of YTD
Campus at Mount View								
Betty K. Marler	0.4	0.5	21.9	16.2	22.2	16.7	30	55.7%
Phoenix	0.0	0.0	32.2	30.5	32.2	30.5	36	84.6%
Rocky Mountain	0.0	0.5	1.7	1.9	1.7	2.4	2	118.6%
Gilliam	0.0	0.5	12.3	8.9	12.3	9.4	1	937.4%
Grand Mesa	0.8	0.8	26.1	25.3	26.9	26.1	33	79.1%
Lookout Mountain ²	2.4	1.3	9.4	13.5	11.8	14.9	72	20.6%
Marvin Foote	0.0	0.9	7.3	5.8	7.3	6.6	2	332.3%
Platte Valley	1.4	3.0	41.2	44.2	42.6	47.2	52	90.9%
Prairie Vista	0.0	0.4	1.0	0.7	1.0	1.1	-	-
Pueblo	0.0	0.0	0.7	0.3	0.7	0.3	1	30.1%
Spring Creek	1.0	1.9	43.0	41.9	44.0	43.8	50	87.5%
Zebulon Pike	0.0	0.0	0.2	0.3	0.2	0.3	1	34.5%
Assessment Total	5.9	9.8	-	-	5.9	9.8	30	
Secure Total	-	-	196.8	189.4	196.8	189.4	255	
STATE SECURE TOTAL					202.7	199.3	280	71.2%



¹ Youth center bed-capacity design limits reflect allocations for FY 2025-26 as of July 1, 2025.

² Beginning July 1, 2025, Aspire, Golden Peak, and Summit converged to a single Youth Center: Lookout Mountain YSC.

December 2025 DYS Population Report

IV. Commitment Services Continued

B. Contract, Community, & Other Residential ADP by Youth Center

Youth Center/Program	ADP	
	Monthly	YTD
CONTRACT: STAFF SUPERVISED		
Alternative Homes For Youth - Greeley	13.9	12.2
Gateway Residential Program - Delta	2.0	2.9
Third Way Center - Lowry	0.5	1.6
Staff Supervised Subtotal	16.5	16.8
CONTRACT: COMMUNITY RESIDENTIAL		
Ariel Clinical Services	0.5	0.9
Mt Evans Qualifying House	8.0	8.4
Third Way Center, Lincoln	2.9	3.0
Third Way Center, Pontiac	0.0	0.3
Third Way Center, York	1.8	1.0
Community Residential Subtotal	13.2	13.7
(Contract) Staff Supervised + Community Subtotal	29.7	30.5
OTHER RESIDENTIAL		
Hospital	0.0	0.1
Residential Drug/Alcohol Program	0.0	0.4
Residential Mental Health Program	0.0	0.2
Residential Work Program	0.0	0.2
Shelter Care (short term)	1.0	0.7
Other Residential Subtotal	1.0	1.5
<i>Trails Corrections Currently in Progress</i>	<i>1.0</i>	<i>0.3</i>
COMMITTED RESIDENTIAL TOTAL	234.4	231.6

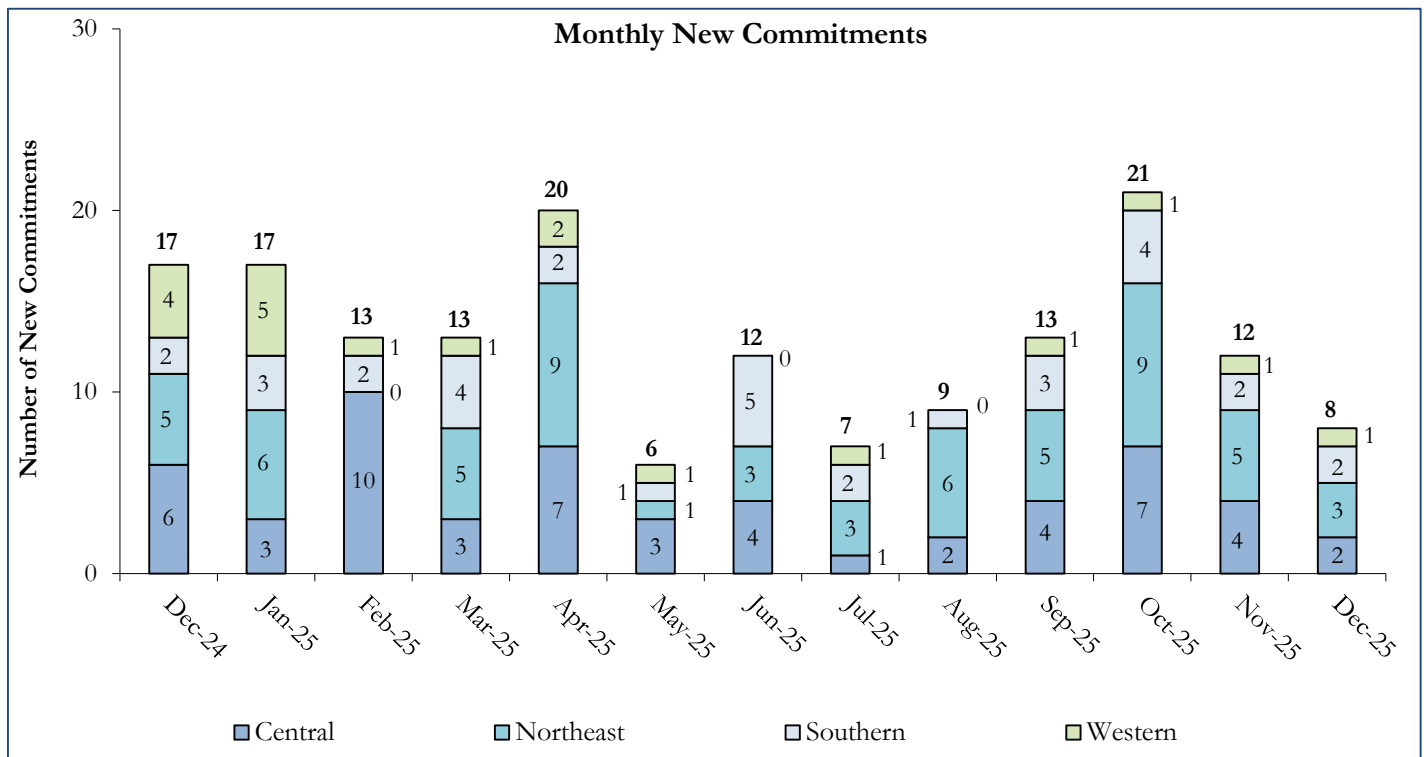
December 2025 DYS Population Report

V. Commitment ADP and New Commitments

A. Commitment ADP and New Commitments

COMMITMENT ADP				
Region	December	% Change from Prior Month	YTD	% Change from Prior FY
Central	85.7	-1.4%	84.2	-23.0%
Northeast	74.8	-1.6%	71.0	1.6%
Southern	45.2	-1.4%	45.7	-24.6%
Western	28.7	2.3%	30.8	-9.3%
Commitment ADP	234.4	-1.0%	231.6	-15.4%

NEW COMMITMENTS					
Region	FY 25-26		FY 24-25		% Change from last YTD
Region	December	YTD	December	YTD	
Central	2	21	6	41	-48.8%
Northeast	3	32	5	25	28.0%
Southern	2	14	2	23	-39.1%
Western	1	6	4	9	-33.3%
TOTAL	8	73	17	98	-25.5%



December 2025 DYS Population Report

V. Commitment ADP and New Commitments Continued

B. New Commitments by Judicial District

Region	JD ¹	2026 Population Estimates ²	ADP ³		New Commitments		
			December 2025	YTD	December 2025	YTD	YTD Rate ⁴
<i>Central Region</i>							
	1st	51,087	18.0	16.1	0	7	1.4
	2nd	54,544	30.0	27.9	2	9	1.7
	5th	8,824	1.5	1.8	1	1	1.1
	18th	68,920	38.0	36.7	0	10	1.5
	23rd ⁵	51,398	7.0	8.3	0	0	0.0
Central Total		234,773	94.6	90.8	3	27	1.2
<i>Northeast Region</i>							
	8th	34,422	13.5	12.7	0	5	1.5
	13th	8,779	1.5	2.2	0	0	0.0
	17th	69,647	19.3	19.9	0	8	1.1
	19th	44,213	29.4	26.8	2	13	2.9
	20th	27,396	5.2	5.3	0	1	0.4
Northeast Total		184,457	68.9	66.9	2	27	1.5
<i>Southern Region</i>							
	3rd	1,626	0.0	0.0	0	0	0.0
	4th	76,987	33.6	32.2	1	10	1.3
	10th	16,613	9.5	11.5	1	3	1.8
	11th	6,743	0.0	0.0	0	0	0.0
	12th	4,906	1.0	1.0	0	0	0.0
	15th	2,090	0.0	0.5	0	0	0.0
	16th	2,597	1.0	1.0	0	0	0.0
Southern Total		111,562	45.2	46.2	2	13	1.2
<i>Western Region</i>							
	6th	6,555	3.0	2.2	0	2	3.1
	7th	9,637	2.7	1.4	1	2	2.1
	9th	9,121	1.0	1.0	0	0	0.0
	14th	4,898	1.0	1.0	0	0	0.0
	21st	15,129	14.1	17.3	0	2	1.3
	22nd	2,739	4.0	4.7	0	0	0.0
Western Total		48,079	25.7	27.7	1	6	1.2
Statewide Total		578,871	234.4	231.6	8	73	1.3

¹ JD represents the Judicial District in which the client was committed. Regional totals are a sum of their respective Judicial Districts.

² Source: DOLA Estimates.

³ Due to rounding, totals shown may not be an exact sum of the subtotals.

⁴ Per 10,000 youth in the population.

⁵ Comprised of Douglas, Elbert, and Lincoln Counties, the 23rd Judicial District was established on January 14th, 2025, following departure from the 18th Judicial District (Arapahoe).

December 2025 DYS Population Report

VI. Parole Services

PAROLE ADP

Region	Monthly	YTD		% Change from Prior Year
		FY 25-26	FY 24-25	
Central	27.7	30.3	42.7	-29.0%
Northeast	26.2	28.2	27.3	3.2%
Southern	19.7	25.8	14.5	78.4%
Western	8.0	11.0	15.0	-27.0%
Total	81.5	95.3	99.5	-4.2%

Region	Parole Intakes		Discharges		LOS
	Monthly	YTD	Monthly	YTD	
Central	4	19	2	35	7.5
Northeast	3	28	8	29	6.0
Southern	3	14	6	33	6.8
Western	0	7	0	17	6.7
Total	10	68	16	114	6.8

Monthly Parole ADP

