

November 2025 FY 2025-2026 MONTHLY POPULATION REPORT

Prepared by the Division of Youth Services (DYS)
Data Management and Analysis
2/11/2026

This document can be provided in a fully accessible format upon request. Please visit the [Accessibility at CDHS](#) webpage where you can submit your request for accessibility accommodation via the [CDHS Digital Accessibility and Support Form](#).



COLORADO
Division of Youth Services
Office of Children, Youth & Families

November 2025

DYS Population Report

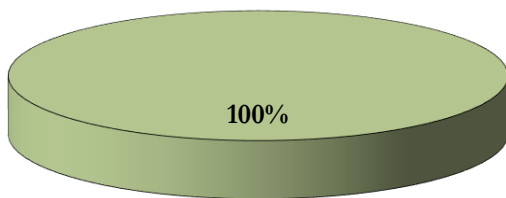
I.	Summary Population Data	1
II.	Population Trends	2
III.	Detention Program Services	
	A. Detention ADP by Judicial District	3
	B. Unused Percent of Capacity by Judicial District	4
	C. Maximum Youth Served by Judicial District	5
	D. Length of Stay (LOS) by Judicial District	6
	E. Detention Data & Capacity by Youth Center	7
	F. Detention Data by Region	8
IV.	Commitment Services	
	A. State Secure ADP by Youth Center	9
	B. Contract, Community, & Other Residential ADP by Youth Center	10
V.	Commitment ADP and New Commitments	
	A. Commitment ADP and New Commitments	11
	B. New Commitments by Judicial District	12
VI.	Parole Services	13

November 2025 DYS Population Report

I. Summary Population Data

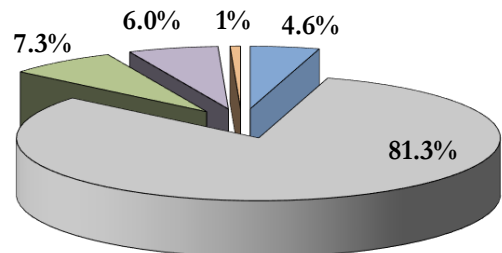
	November 2025		YTD		
	ADP	% change	ADP	LOS	
DETAINED YOUTH					
State-Operated	191.0	1.1%	184.7	25.2	days
Total Detained	191.0	1.1%	184.7	25.2	days
COMMITTED YOUTH					
Assessment	15.4	9.0%	10.6	23.3	days
Secure	190.2	2.8%	187.7	13.8	months
Staff Supervised	16.3	2.2%	16.8	5.9	months
Community Residential	13.6	-2.3%	13.8	3.4	months
Other Residential	0.7	-52.9%	1.6	1.4	months
<i>Trails Corrections Currently in Progress</i>	<i>0.6</i>		<i>0.3</i>		
Total Committed Residential	236.8	2.4%	230.9	15.3	months
<i>Committed Residential w/o Boulder</i>	<i>236.8</i>	<i>2.4%</i>	<i>230.9</i>		
PAROLED YOUTH					
Total Paroled	85.5	-10.3%	98.1	6.8	months
TOTAL STATEWIDE ADP					
DETENTION	191.0	1.1%	184.7	25.2	days
COMMITMENT	236.8	2.4%	230.9	15.3	months
PAROLE	85.5	-10.3%	98.1	6.8	months
STATE TOTAL	513.3	-0.4%	513.8		

Detention ADP YTD¹



■ State-Operated

Commitment ADP YTD¹

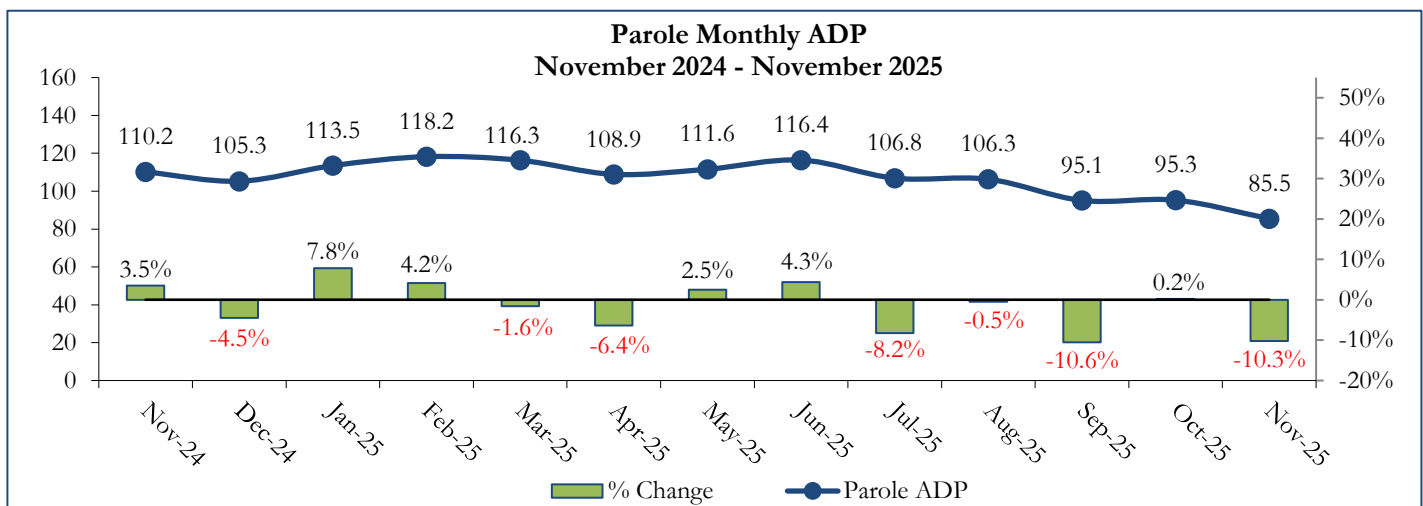
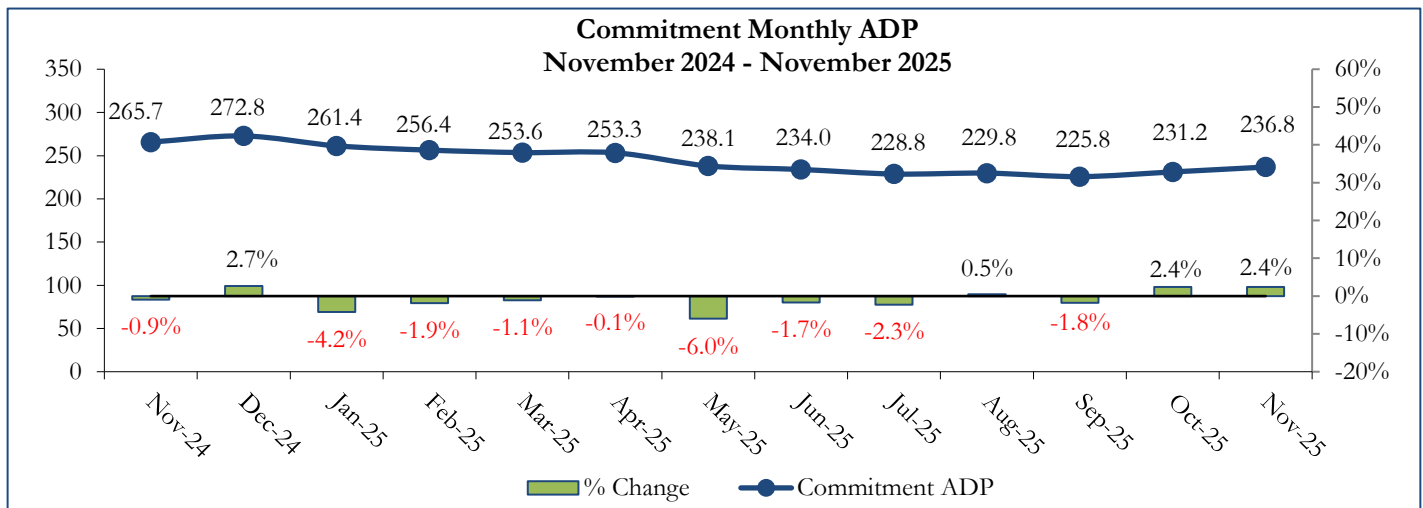
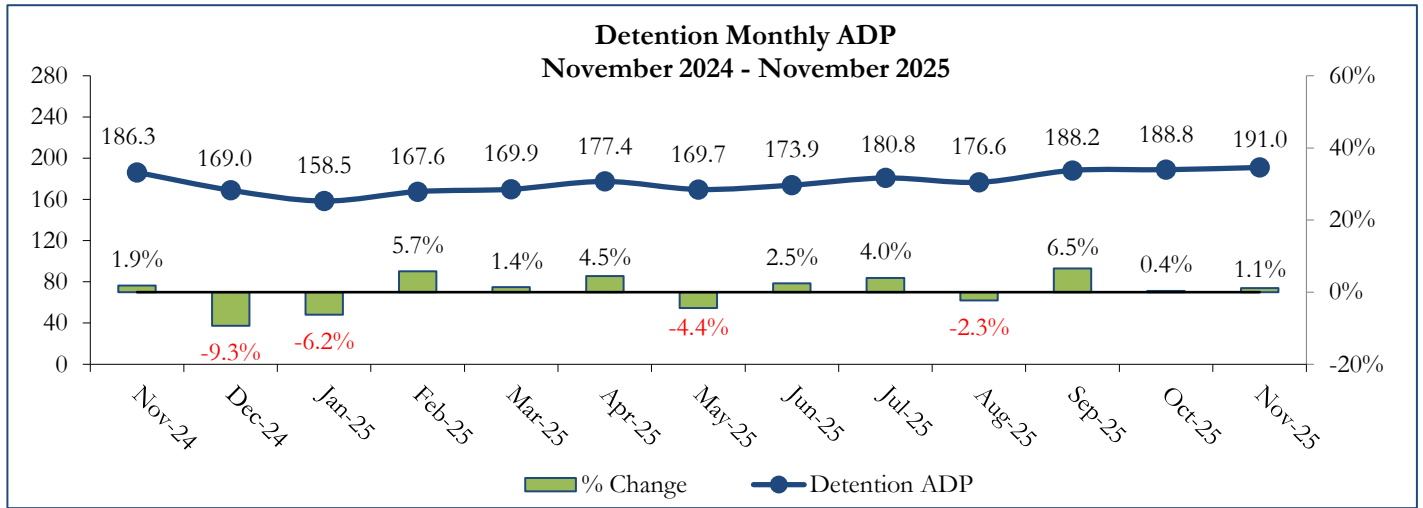


■ Assessment
 ■ Secure
 ■ Staff Supervised
 ■ Community
 ■ Other

¹ Due to rounding, totals may not sum to 100%.

November 2025 DYS Population Report

II. Population Trends



November 2025 DYS Population Report

III. Detention Program Services

A. Detention ADP by Judicial District

Region	JD	Capacity ¹	November 2025		YTD		2026 Population Estimates ²	New Admits		
			ADP	% of Cap	ADP	% of Cap		Monthly	YTD	YTD New Admit Rate ³
<i>Central Region</i>										
	1st	18	10.7	59.4%	12.3	68.2%	51,087	13	88	17.2
	2nd	29	30.5	105.2%	27.8	95.7%	54,544	32	159	29.2
	5th	2	4.0	200.0%	3.1	157.0%	8,824	0	8	9.1
	18th	25	27.3	109.4%	26.5	105.8%	68,920	33	172	25.0
	23rd ⁴	11	6.1	55.3%	5.4	49.3%	51,398	12	54	10.5
Central Total		85	78.6	92.5%	75.1	88.3%	234,773	90	481	20.5
<i>Northeast Region</i>										
	8th	11	7.3	66.5%	5.9	53.8%	34,422	13	46	13.4
	13th	2	1.2	57.5%	0.9	43.5%	8,779	0	12	13.7
	17th	20	17.0	85.2%	18.6	93.1%	69,647	19	105	15.1
	19th	19	11.3	59.6%	12.2	64.2%	44,213	15	80	18.1
	20th	7	3.3	47.1%	3.2	46.0%	27,396	2	20	7.3
Northeast Total		59	40.1	68.0%	40.8	69.2%	184,457	49	263	14.3
<i>Southern Region</i>										
	3rd	2	0.9	44.0%	0.2	9.0%	1,626	1	2	12.3
	4th	30	43.7	145.6%	42.0	140.0%	76,987	28	184	23.9
	10th	9	7.5	82.8%	7.0	78.1%	16,613	6	46	27.7
	11th	2	0.0	0.0%	0.5	25.0%	6,743	0	2	3.0
	12th	2	1.5	74.0%	1.6	81.0%	4,906	1	8	16.3
	15th	2	0.6	32.0%	0.2	10.0%	2,090	2	5	23.9
	16th	2	0.6	31.5%	0.4	20.0%	2,597	4	9	34.7
Southern Total		49	54.8	111.8%	51.9	106.0%	111,562	42	256	22.9
<i>Western Region</i>										
	6th	2	2.8	138.0%	2.4	121.5%	6,555	1	9	13.7
	7th	3	4.9	163.7%	3.0	99.7%	9,637	3	14	14.5
	9th	2	0.0	0.0%	0.9	44.5%	9,121	0	6	6.6
	14th	2	0.4	18.5%	0.1	3.5%	4,898	2	2	4.1
	21st	11	5.6	51.3%	7.7	70.0%	15,129	9	64	42.3
	22nd	2	3.2	159.5%	2.8	139.5%	2,739	0	14	51.1
Western Total		22	16.9	76.7%	16.9	76.7%	48,079	15	109	22.7
Unknown⁵			0.6		0.1			0	0	
Statewide Total		215	191.0	88.8%	184.7	85.9%	578,871	196	1,109	19.2

¹ Judicial District bed-capacity limits reflect allocations for FY 2025-26 as of July 1, 2025.

² Source: DOLA Estimates.

³ Per 10,000 youth in the population.

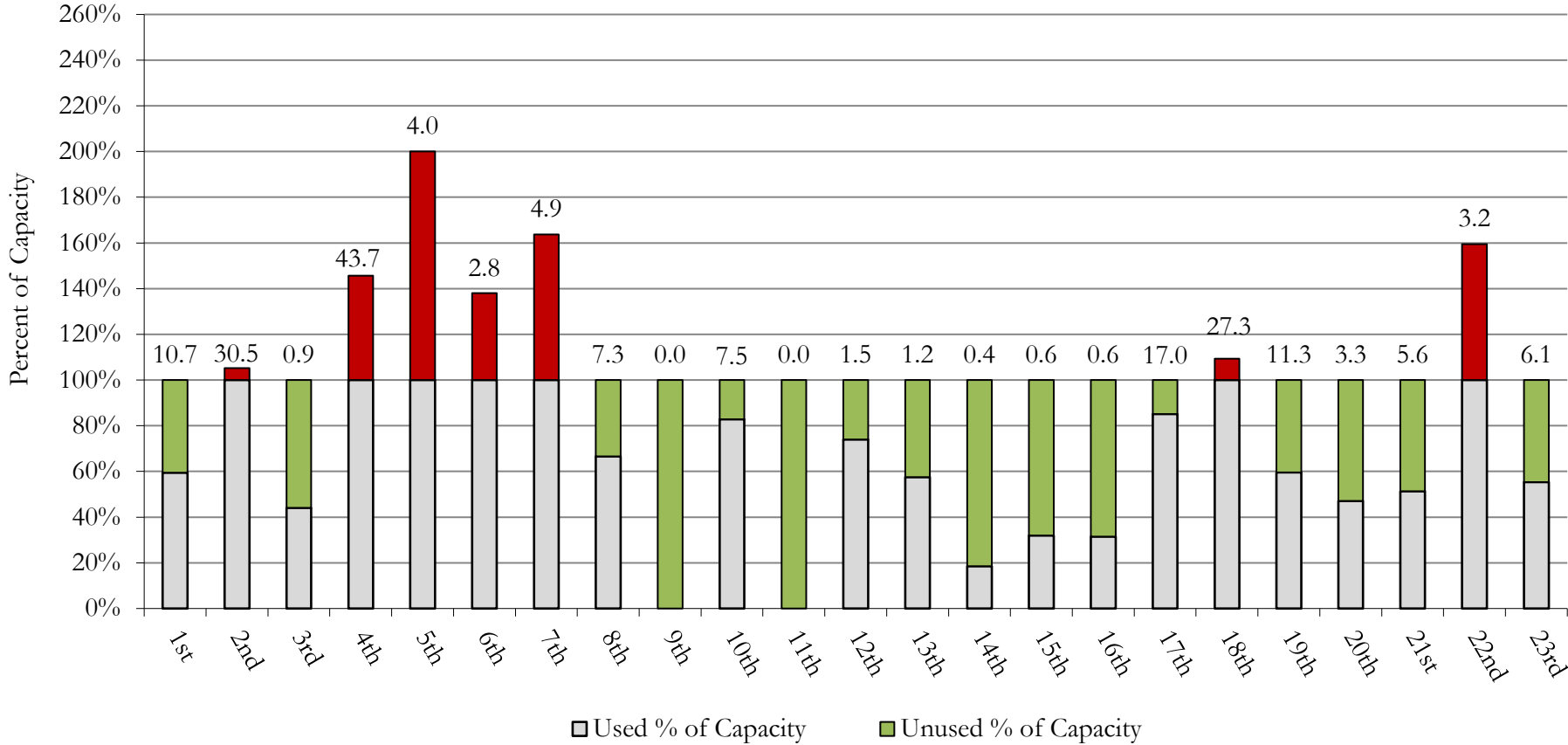
⁴ Comprised of Douglas, Elbert, and Lincoln Counties, the 23rd Judicial District was established on January 14th, 2025, following departure from the 18th Judicial District (Arapahoe).

⁵ Due to tracking limitations, the Detention ADP for these youth is not associated with one particular Judicial District.

November 2025 DYS Population Report

III. Detention Program Services Continued B. Unused Percent of Capacity by Judicial District

Monthly Detention Services
Capacity Utilization by Judicial District ¹



¹ Monthly detention ADP is expressed by "Used % of Capacity" and is reported as the value above each bar for each Judicial District.

November 2025 DYS Population Report

III. Detention Program Services Continued

C. Maximum Youth Served by Judicial District¹

Region	JD	Detention Capacity ⁴	Detention ADP		Maximum Youth Served on a Single Day ^{2,3}			
			November 2025	YTD	November 2025		YTD	
					Number of Youth	% of Detention Capacity	Number of Youth	% of Detention Capacity
<i>Central Region</i>								
	1st	18	10.7	12.3	13	72.2%	20	111.1%
	2nd	29	30.5	27.8	36	124.1%	36	124.1%
	5th	2	4.0	3.1	4	200.0%	5	250.0%
	18th	25	27.3	26.5	35	140.0%	36	144.0%
	23rd ⁵	11	6.1	5.4	9	81.8%	9	81.8%
Central Region		85	78.6	75.1	91	107.1%	91	107.1%
<i>Northeast Region</i>								
	8th	11	7.3	5.9	10	90.9%	10	90.9%
	13th	2	1.2	0.9	2	100.0%	3	150.0%
	17th	20	17.0	18.6	22	110.0%	27	135.0%
	19th	19	11.3	12.2	15	78.9%	16	84.2%
	20th	7	3.3	3.2	4	57.1%	8	114.3%
Northeast Region		59	40.1	40.8	46	78.0%	50	84.7%
<i>Southern Region</i>								
	3rd	2	0.9	0.2	1	50.0%	1	50.0%
	4th	30	43.7	42.0	46	153.3%	49	163.3%
	10th	9	7.5	7.0	11	122.2%	11	122.2%
	11th	2	0.0	0.5	0	0.0%	1	50.0%
	12th	2	1.5	1.6	2	100.0%	3	150.0%
	15th	2	0.6	0.2	2	100.0%	2	100.0%
	16th	2	0.6	0.4	3	150.0%	3	150.0%
Southern Region		49	54.8	51.9	58	118.4%	58	118.4%
<i>Western Region</i>								
	6th	2	2.8	2.4	4	200.0%	5	250.0%
	7th	3	4.9	3.0	6	200.0%	6	200.0%
	9th	2	0.0	0.9	0	0.0%	3	150.0%
	14th	2	0.4	0.1	1	50.0%	1	50.0%
	21st	11	5.6	7.7	8	72.7%	14	127.3%
	22nd	2	3.2	2.8	4	200.0%	6	300.0%
Western Region		22	16.9	16.9	21	95.5%	23	104.5%
<i>Missing JD or Multiple JDs</i>			<i>0.6</i>	<i>0.1</i>				
Statewide		215	191.0	184.7	205	95.3%	210	97.7%

¹ Maximum youth served is the highest number of youth in detention on a single day during the month or fiscal year.

² Regional figures are not the sum of Judicial Districts, but represent the maximum count on one day for the entire region.

³ State figures are not the sum of regional figures, but represent the maximum count on one day for the entire state.

⁴ Judicial District bed-capacity limits reflect allocations for FY 2025-26 as of July 1, 2025.

⁵ Comprised of Douglas, Elbert, and Lincoln Counties, the 23rd Judicial District was established on January 14th, 2025, following departure from the 18th Judicial District (Arapahoe).

November 2025 DYS Population Report

III. Detention Program Services Continued

D. Length of Stay (LOS) by Judicial District

Region	JD	YTD Detention Releases	YTD LOS (days)	LOS (days) Compared to State AVG
<i>Central Region</i>				
	1st	87	20.9	-4.3
	2nd	162	24.9	-0.2
	5th	6	11.9	-13.2
	18th	177	28.2	3.1
	23rd ¹	52	11.7	-13.4
Central Total		484	23.8	-1.3
<i>Northeast Region</i>				
	8th	44	17.4	-7.8
	13th	11	4.4	-20.7
	17th	109	35.0	9.8
	19th	84	23.2	-2.0
	20th	21	20.0	-5.2
Northeast Total		269	26.0	0.8
<i>Southern Region</i>				
	3rd	1	1.0	-24.1
	4th	181	28.5	3.3
	10th	43	19.9	-5.2
	11th	3	36.4	11.2
	12th	7	13.3	-11.9
	15th	5	6.1	-19.1
	16th	9	6.8	-18.3
Southern Total		249	25.3	0.2
<i>Western Region</i>				
	6th	8	61.1	35.9
	7th	11	13.4	-11.8
	9th	7	20.0	-5.2
	14th	1	0.9	-24.3
	21st	66	19.2	-5.9
	22nd	14	26.7	1.5
Western Total		107	22.6	-2.6
Statewide Total		1,085	25.2	-

¹ Comprised of Douglas, Elbert, and Lincoln Counties, the 23rd Judicial District was established on January 14th, 2025, following departure from the 18th Judicial District (Arapahoe).

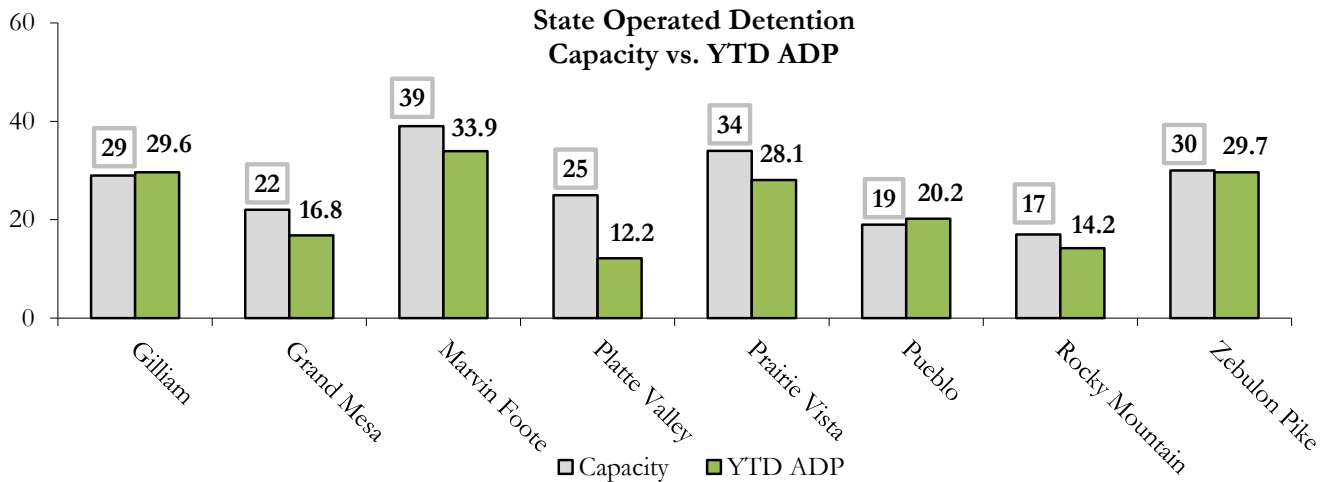
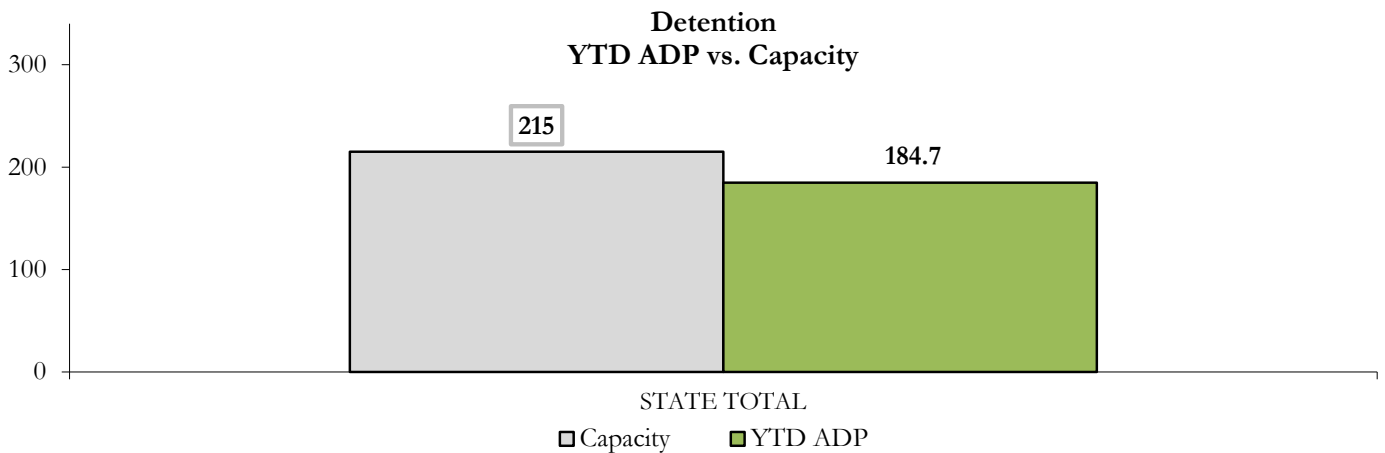
November 2025

DYS Population Report

III. Detention Program Services Continued

E. Detention Data & Capacity by Youth Center

State-Operated Detention							
Youth Center	Operating Capacity ¹	Average Daily Population			New Admissions		LOS (days)
		Monthly	YTD	YTD % of Cap	Monthly	YTD	YTD
Rocky Mountain	17	13.8	14.2	83.7%	9	73	24.0
Gilliam	29	31.7	29.6	102.2%	32	165	25.9
Grand Mesa	22	17.4	16.8	76.6%	16	107	23.6
Marvin Foote	39	36.3	33.9	87.0%	50	251	24.4
Platte Valley	25	11.8	12.2	48.7%	21	108	18.2
Prairie Vista	34	27.7	28.1	82.5%	28	155	32.8
Pueblo	19	21.7	20.2	106.3%	26	139	20.0
Zebulon Pike	30	30.6	29.7	98.9%	14	111	31.2
State Total	215	191.0	184.7	85.9%	196	1,109	25.2



¹ Youth Center bed-capacity limits reflect allocations for FY 2025-26 as of July 1, 2025.

November 2025

DYS Population Report

III. Detention Program Services Continued

F. Detention Data by Region

Youth Center & Region	Operating Capacity ¹	Maximum Count ²			ADP
		November 2025	YTD	% of Capacity YTD	YTD
<i>Central Region</i>					
Gilliam	29	37	38	131.0%	29.6
Marvin Foote	39	40	44	112.8%	33.9
Rocky Mountain	17	16	20	117.6%	14.2
Central Total	85	91	91	107.1%	77.8
<i>Northeast Region</i>					
Platte Valley	25	17	18	72.0%	12.2
Prairie Vista	34	32	36	105.9%	28.1
Northeast Total	59	46	50	84.7%	40.2
<i>Southern Region</i>					
Pueblo	19	27	27	142.1%	20.2
Zebulon Pike	30	32	32	106.7%	29.7
Southern Total	49	58	58	118.4%	49.9
<i>Western Region</i>					
Grand Mesa	22	21	23	104.5%	16.8
Western Total	22	21	23	104.5%	16.8
STATE TOTAL	215	205	210	97.7%	184.7

¹ Youth Center bed-capacity limits reflect allocations for FY 2025-26 as of July 1, 2025.

² Region and state maximum count totals are maximum counts of youth in each Region, and throughout Colorado. Maximum count totals are not regional or state sums.

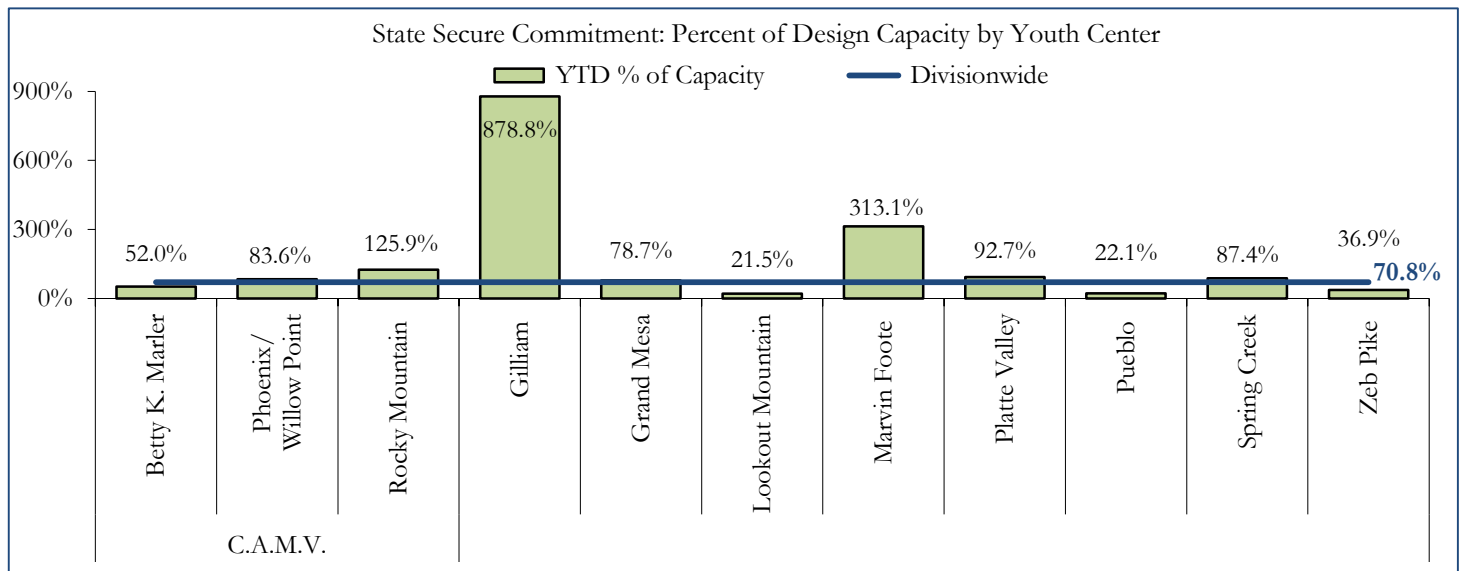
November 2025

DYS Population Report

IV. Commitment Services

A. State Secure ADP by Youth Center

STATE SECURE + ASSESSMENT								
Youth Center	Assessment		ADP Secure		Total		Capacity Design	
	Monthly	YTD	Monthly	YTD	Monthly	YTD	Capacity ¹	% of YTD
Campus at Mount View								
Betty K. Marler	1.0	0.6	19.0	15.0	20.0	15.6	30	52.0%
Phoenix	0.0	0.0	31.8	30.1	31.8	30.1	36	83.6%
Rocky Mountain	1.1	0.6	1.7	1.9	2.8	2.5	2	125.9%
Gilliam	0.4	0.6	12.9	8.2	13.3	8.8	1	878.8%
Grand Mesa	2.0	0.8	24.7	25.2	26.7	26.0	33	78.7%
Lookout Mountain ²	5.7	1.1	1.4	14.4	7.1	15.5	72	21.5%
Marvin Foote	1.0	1.0	10.4	5.2	11.3	6.3	2	313.1%
Platte Valley	2.1	3.3	42.8	44.9	44.9	48.2	52	92.7%
Prairie Vista	0.6	0.5	0.5	0.6	1.1	1.1	-	-
Pueblo	0.0	0.0	0.7	0.2	0.7	0.2	1	22.1%
Spring Creek	1.3	2.1	44.2	41.6	45.5	43.7	50	87.4%
Zebulon Pike	0.0	0.0	0.1	0.4	0.1	0.4	1	36.9%
Assessment Total	15.4	10.6	-	-	15.4	10.6	30	
Secure Total	-	-	190.2	187.7	190.2	187.7	255	
STATE SECURE TOTAL					205.6	198.3	280	70.8%



¹ Youth center bed-capacity design limits reflect allocations for FY 2025-26 as of July 1, 2025.

² Beginning July 1, 2025, Aspire, Golden Peak, and Summit converged to a single Youth Center: Lookout Mountain YSC.

November 2025 DYS Population Report

IV. Commitment Services Continued

B. Contract, Community, & Other Residential ADP by Youth Center

Youth Center/Program	ADP	
	Monthly	YTD
CONTRACT: STAFF SUPERVISED		
Alternative Homes For Youth - Greeley	13.2	11.9
Gateway Residential Program - Delta	2.1	3.1
Third Way Center - Lowry	1.0	1.9
Staff Supervised Subtotal	16.3	16.8
CONTRACT: COMMUNITY RESIDENTIAL		
Ariel Clinical Services	0.0	1.0
Mt Evans Qualifying House	8.0	8.5
Third Way Center, Lincoln	3.0	3.1
Third Way Center, Pontiac	0.6	0.4
Third Way Center, York	2.0	0.9
Community Residential Subtotal	13.6	13.8
(Contract) Staff Supervised + Community Subtotal	29.9	30.6
OTHER RESIDENTIAL		
Hospital	0.3	0.1
Residential Drug/Alcohol Program	0.0	0.5
Residential Mental Health Program	0.0	0.2
Residential Work Program	0.0	0.2
Shelter Care (short term)	0.4	0.6
Other Residential Subtotal	0.7	1.6
<i>Trails Corrections Currently in Progress</i>	<i>0.6</i>	<i>0.3</i>
COMMITTED RESIDENTIAL TOTAL	236.8	230.9

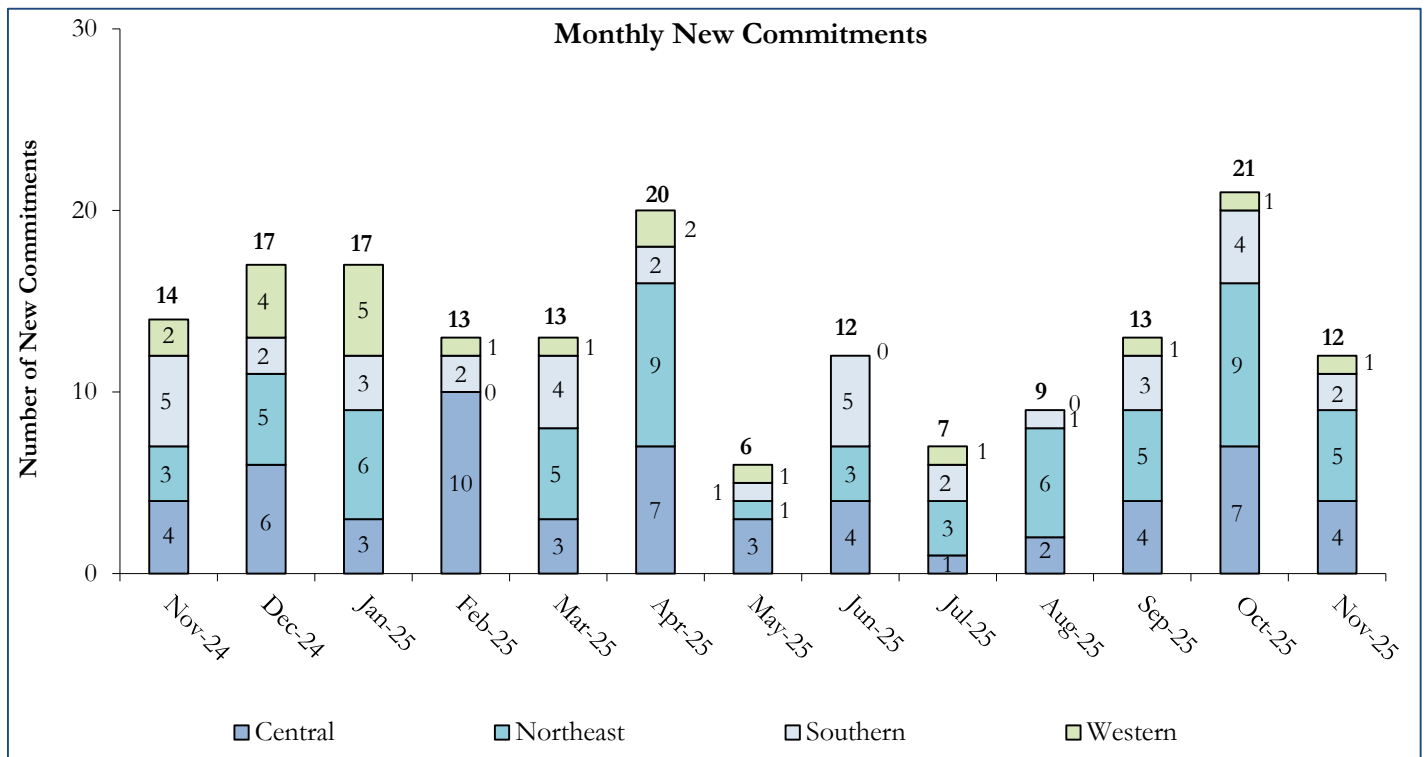
November 2025 DYS Population Report

V. Commitment ADP and New Commitments

A. Commitment ADP and New Commitments

COMMITMENT ADP				
Region	November	% Change from Prior Month	YTD	% Change from Prior FY
Central	86.9	3.5%	84.8	-17.7%
Northeast	76.0	8.9%	70.2	-9.4%
Southern	45.8	-4.1%	45.8	-22.9%
Western	28.1	-5.3%	30.2	-9.7%
Commitment ADP	236.8	2.4%	230.9	-15.5%

NEW COMMITMENTS					
Region	FY 25-26		FY 24-25		% Change from last YTD
Region	November	YTD	November	YTD	
Central	4	18	4	33	-45.5%
Northeast	5	29	3	21	38.1%
Southern	2	12	5	21	-42.9%
Western	1	5	2	5	0.0%
TOTAL	12	64	14	80	-20.0%



November 2025 DYS Population Report

V. Commitment ADP and New Commitments Continued

B. New Commitments by Judicial District

Region	JD ¹	2026 Population Estimates ²	ADP ³		New Commitments		
			November 2025	YTD	November 2025	YTD	YTD Rate ⁴
<i>Central Region</i>							
	1st	51,087	18.1	15.7	1	7	1.4
	2nd	54,544	28.4	27.5	2	7	1.3
	5th	8,824	1.1	1.8	0	0	0.0
	18th	68,920	39.1	36.4	2	9	1.3
	23rd ⁵	51,398	7.5	8.6	0	0	0.0
Central Total		234,773	94.2	90.0	5	23	1.0
<i>Northeast Region</i>							
	8th	34,422	14.4	12.6	0	5	1.5
	13th	8,779	2.0	2.4	0	0	0.0
	17th	69,647	19.8	20.0	1	8	1.1
	19th	44,213	28.5	26.3	3	11	2.5
	20th	27,396	6.0	5.3	0	1	0.4
Northeast Total		184,457	70.7	66.5	4	25	1.4
<i>Southern Region</i>							
	3rd	1,626	0.0	0.0	0	0	0.0
	4th	76,987	33.0	31.8	2	9	1.2
	10th	16,613	10.9	11.9	0	2	1.2
	11th	6,743	0.0	0.0	0	0	0.0
	12th	4,906	1.0	1.0	0	0	0.0
	15th	2,090	0.0	0.6	0	0	0.0
	16th	2,597	1.0	1.0	0	0	0.0
Southern Total		111,562	45.8	46.4	2	11	1.0
<i>Western Region</i>							
	6th	6,555	3.0	2.1	0	2	3.1
	7th	9,637	1.7	1.1	0	1	1.0
	9th	9,121	1.0	1.0	0	0	0.0
	14th	4,898	1.0	1.1	0	0	0.0
	21st	15,129	15.3	17.9	1	2	1.3
	22nd	2,739	4.1	4.8	0	0	0.0
Western Total		48,079	26.1	28.0	1	5	1.0
Statewide Total		578,871	236.8	230.9	12	64	1.1

¹ JD represents the Judicial District in which the client was committed. Regional totals are a sum of their respective Judicial Districts.

² Source: DOLA Estimates.

³ Due to rounding, totals shown may not be an exact sum of the subtotals.

⁴ Per 10,000 youth in the population.

⁵ Comprised of Douglas, Elbert, and Lincoln Counties, the 23rd Judicial District was established on January 14th, 2025, following departure from the 18th Judicial District (Arapahoe).

November 2025 DYS Population Report

VI. Parole Services

PAROLE ADP				
Region	Monthly	YTD		% Change from Prior Year
		FY 25-26	FY 24-25	
Central	26.9	31.7	41.3	-23.1%
Northeast	28.5	27.7	27.6	0.4%
Southern	20.8	27.1	14.1	91.9%
Western	9.3	11.6	15.4	-25.0%
Total	85.5	98.1	98.4	-0.3%

Region	Parole Intakes		Discharges		LOS
	Monthly	YTD	Monthly	YTD	
Central	6	15	6	34	7.3
Northeast	3	25	4	20	6.4
Southern	3	11	6	27	6.4
Western	2	7	5	17	6.7
Total	14	58	21	98	6.8

Monthly Parole ADP

