

# October 2025 FY 2025-2026 MONTHLY POPULATION REPORT

---

Prepared by the Division of Youth Services (DYS)

Data Management and Analysis

2/11/2026

This document can be provided in a fully accessible format upon request. Please visit the [Accessibility at CDHS](#) webpage where you can submit your request for accessibility accommodation via the [CDHS Digital Accessibility and Support Form](#).



**CO L O R A D O**

**Division of Youth Services**

Office of Children, Youth & Families

# October 2025

## DYS Population Report

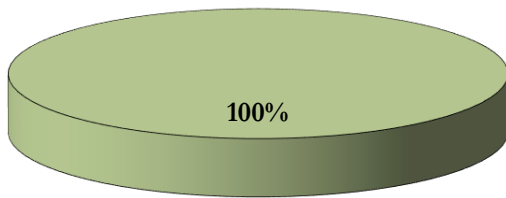
<b>I.</b>	<b>Summary Population Data</b>	<b>1</b>
<b>II.</b>	<b>Population Trends</b>	<b>2</b>
<b>III.</b>	<b>Detention Program Services</b>	
Feb-26	A. Detention ADP by Judicial District	3
	B. Unused Percent of Capacity by Judicial District	4
	C. Maximum Youth Served by Judicial District	5
	D. Length of Stay (LOS) by Judicial District	6
	E. Detention Data & Capacity by Youth Center	7
	F. Detention Data by Region	8
<b>IV.</b>	<b>Commitment Services</b>	
	A. State Secure ADP by Youth Center	9
	B. Contract, Community, & Other Residential ADP by Youth Center	10
<b>V.</b>	<b>Commitment ADP and New Commitments</b>	
	A. Commitment ADP and New Commitments	11
	B. New Commitments by Judicial District	12
<b>VI.</b>	<b>Parole Services</b>	<b>13</b>

# October 2025 DYS Population Report

## I. Summary Population Data

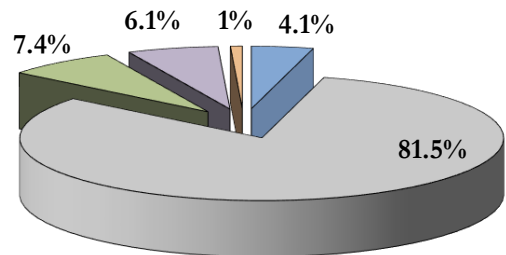
		October 2025		YTD	
		ADP	% change	ADP	LOS
<b>DETAINED YOUTH</b>					
	State-Operated	188.8	0.4%	183.2	24.1 days
	<b>Total Detained</b>	<b>188.8</b>	<b>0.4%</b>	<b>183.2</b>	<b>24.1 days</b>
<b>COMMITTED YOUTH</b>					
Feb-26	Assessment	14.1	133.7%	9.5	22.9 days
	Secure	185.0	-0.3%	187.1	14.2 months
	Staff Supervised	16.0	-12.2%	16.9	5.9 months
	Community Residential	13.9	-4.4%	13.9	3.3 months
	Other Residential	1.5	-5.7%	1.8	1.8 months
	<i>Trails Corrections Currently in Progress</i>	<i>0.7</i>		<i>0.2</i>	
	<b>Total Committed Residential</b>	<b>231.2</b>	<b>2.4%</b>	<b>229.4</b>	<b>15.6 months</b>
	<i>Committed Residential w/o Boulder</i>	<i>231.2</i>	<b>2.4%</b>	<i>229.4</i>	
<b>PAROLED YOUTH</b>					
	<b>Total Paroled</b>	<b>95.3</b>	<b>0.2%</b>	<b>101.5</b>	<b>6.8 months</b>
<b>TOTAL STATEWIDE ADP</b>					
	DETENTION	188.8	0.4%	183.2	24.1 days
	COMMITMENT	231.2	2.4%	229.4	15.6 months
	PAROLE	95.3	0.2%	101.5	6.8 months
	<b>STATE TOTAL</b>	<b>515.3</b>	<b>1.2%</b>	<b>514.2</b>	

**Detention ADP YTD<sup>1</sup>**



■ State-Operated

**Commitment ADP YTD<sup>1</sup>**

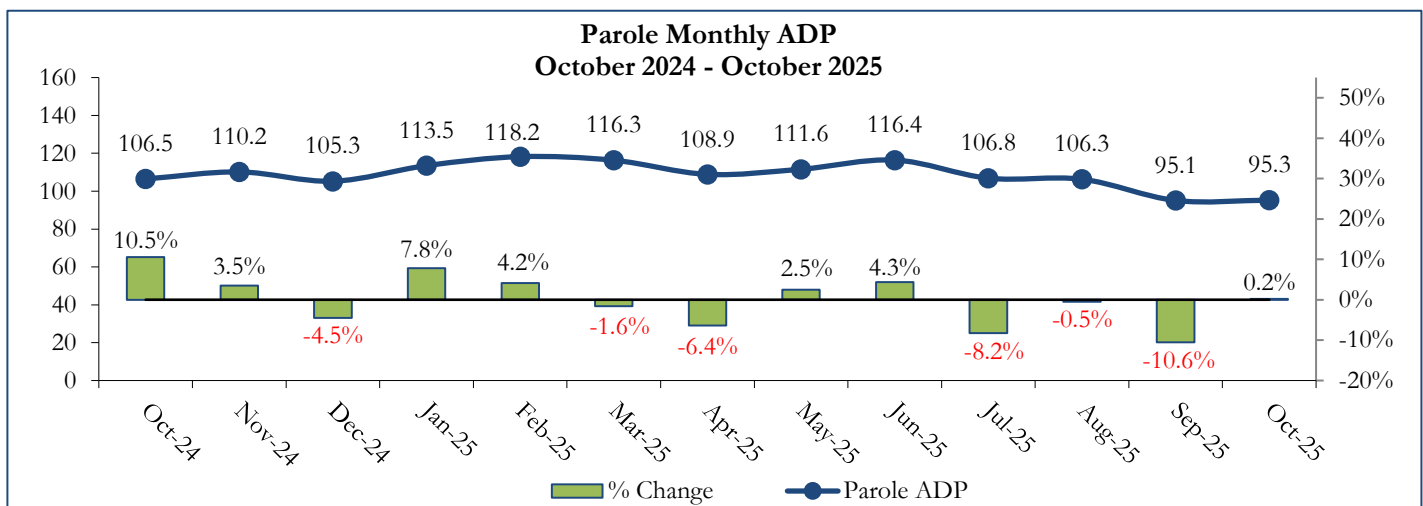
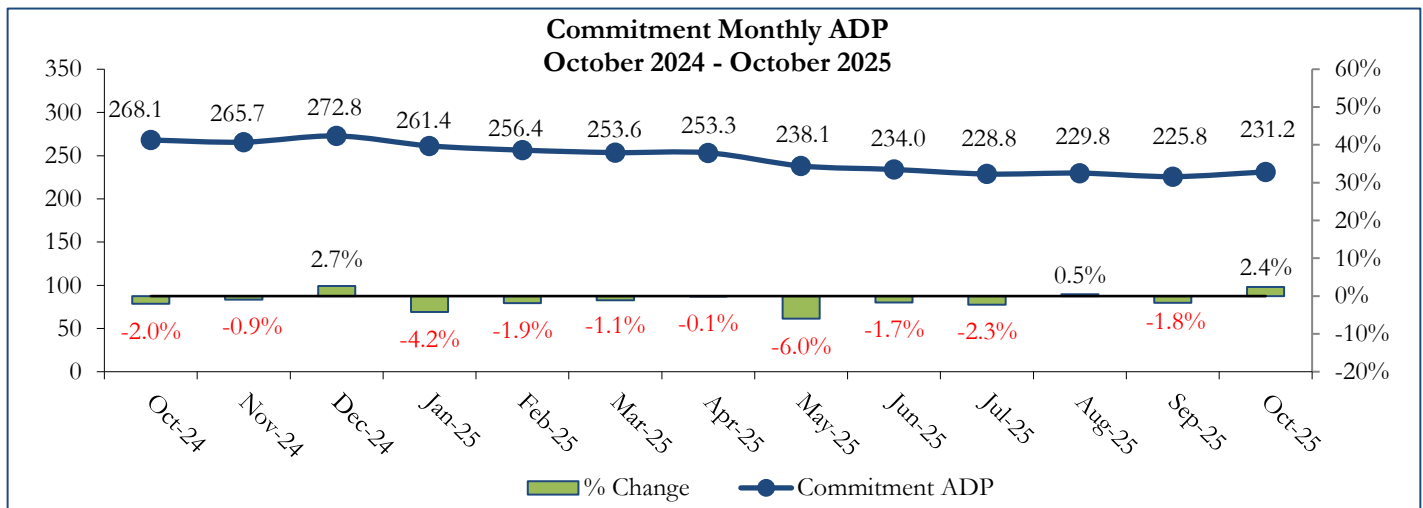
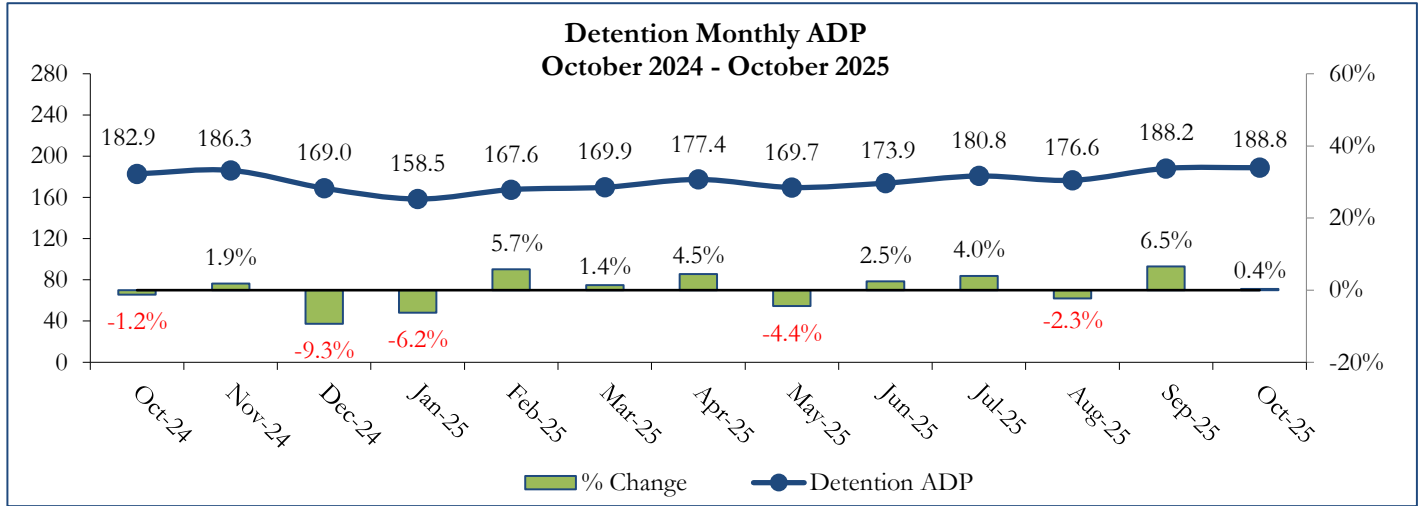


■ Assessment  
 ■ Secure  
 ■ Staff Supervised  
 ■ Community  
 ■ Other

<sup>1</sup> Due to rounding, totals may not sum to 100%.

# October 2025 DYS Population Report

## II. Population Trends



# October 2025 DYS Population Report

## III. Detention Program Services

### A. Detention ADP by Judicial District

Region	JD	Capacity <sup>1</sup>	October 2025		YTD		2026 Population Estimates <sup>2</sup>	New Admits		
			ADP	% of Cap	ADP	% of Cap		Monthly	YTD	YTD New Admit Rate <sup>3</sup>
<i>Central Region</i>										
##	1st	18	13.2	73.1%	12.7	70.3%	51,087	12	75	14.7
	2nd	29	30.6	105.5%	26.9	92.8%	54,544	39	127	23.3
	5th	2	3.5	174.0%	2.9	146.5%	8,824	1	8	9.1
	18th	25	24.6	98.4%	26.2	105.0%	68,920	43	139	20.2
	23rd <sup>4</sup>	11	7.0	63.5%	5.3	47.8%	51,398	6	42	8.2
<b>Central Total</b>		<b>85</b>	<b>78.8</b>	<b>92.7%</b>	<b>74.0</b>	<b>87.0%</b>	<b>234,773</b>	<b>101</b>	<b>391</b>	<b>16.7</b>
<i>Northeast Region</i>										
	8th	11	6.1	55.8%	5.6	50.6%	34,422	15	33	9.6
	13th	2	1.5	73.0%	0.8	40.0%	8,779	4	12	13.7
	17th	20	19.6	97.9%	19.0	95.0%	69,647	18	86	12.3
	19th	19	10.7	56.1%	12.4	65.3%	44,213	22	65	14.7
	20th	7	2.0	28.6%	3.2	45.7%	27,396	5	18	6.6
<b>Northeast Total</b>		<b>59</b>	<b>39.8</b>	<b>67.5%</b>	<b>41.0</b>	<b>69.4%</b>	<b>184,457</b>	<b>64</b>	<b>214</b>	<b>11.6</b>
<i>Southern Region</i>										
	3rd	2	0.03	1.5%	0.01	0.5%	1,626	1	1	6.2
	4th	30	40.7	135.8%	41.6	138.7%	76,987	50	156	20.3
	10th	9	6.6	73.8%	6.9	77.0%	16,613	8	40	24.1
	11th	2	0.1	3.5%	0.6	31.0%	6,743	1	2	3.0
	12th	2	2.5	124.0%	1.7	82.5%	4,906	1	7	14.3
	15th	2	0.2	8.5%	0.1	4.5%	2,090	1	3	14.4
	16th	2	0.1	3.0%	0.3	17.0%	2,597	1	5	19.3
<b>Southern Total</b>		<b>49</b>	<b>50.2</b>	<b>102.4%</b>	<b>51.2</b>	<b>104.6%</b>	<b>111,562</b>	<b>63</b>	<b>214</b>	<b>19.2</b>
<i>Western Region</i>										
	6th	2	3.9	195.0%	2.4	117.5%	6,555	2	8	12.2
	7th	3	3.2	106.0%	2.5	84.0%	9,637	4	11	11.4
	9th	2	0.0	0.0%	1.1	55.5%	9,121	0	6	6.6
	14th	2	0.0	0.0%	0.0	0.0%	4,898	0	0	0.0
	21st	11	7.6	68.6%	8.2	74.5%	15,129	17	55	36.4
	22nd	2	4.8	241.5%	2.7	134.5%	2,739	5	14	51.1
<b>Western Total</b>		<b>22</b>	<b>19.5</b>	<b>88.5%</b>	<b>16.9</b>	<b>76.7%</b>	<b>48,079</b>	<b>28</b>	<b>94</b>	<b>19.6</b>
<b>Unknown<sup>5</sup></b>			<b>0.6</b>		<b>0.2</b>			<b>0</b>	<b>0</b>	
<b>Statewide Total</b>		<b>215</b>	<b>188.8</b>	<b>87.8%</b>	<b>183.2</b>	<b>85.2%</b>	<b>578,871</b>	<b>256</b>	<b>913</b>	<b>15.8</b>

<sup>1</sup> Judicial District bed-capacity limits reflect allocations for FY 2025-26 as of July 1, 2025.

<sup>2</sup> Source: DOLA Estimates.

<sup>3</sup> Per 10,000 youth in the population.

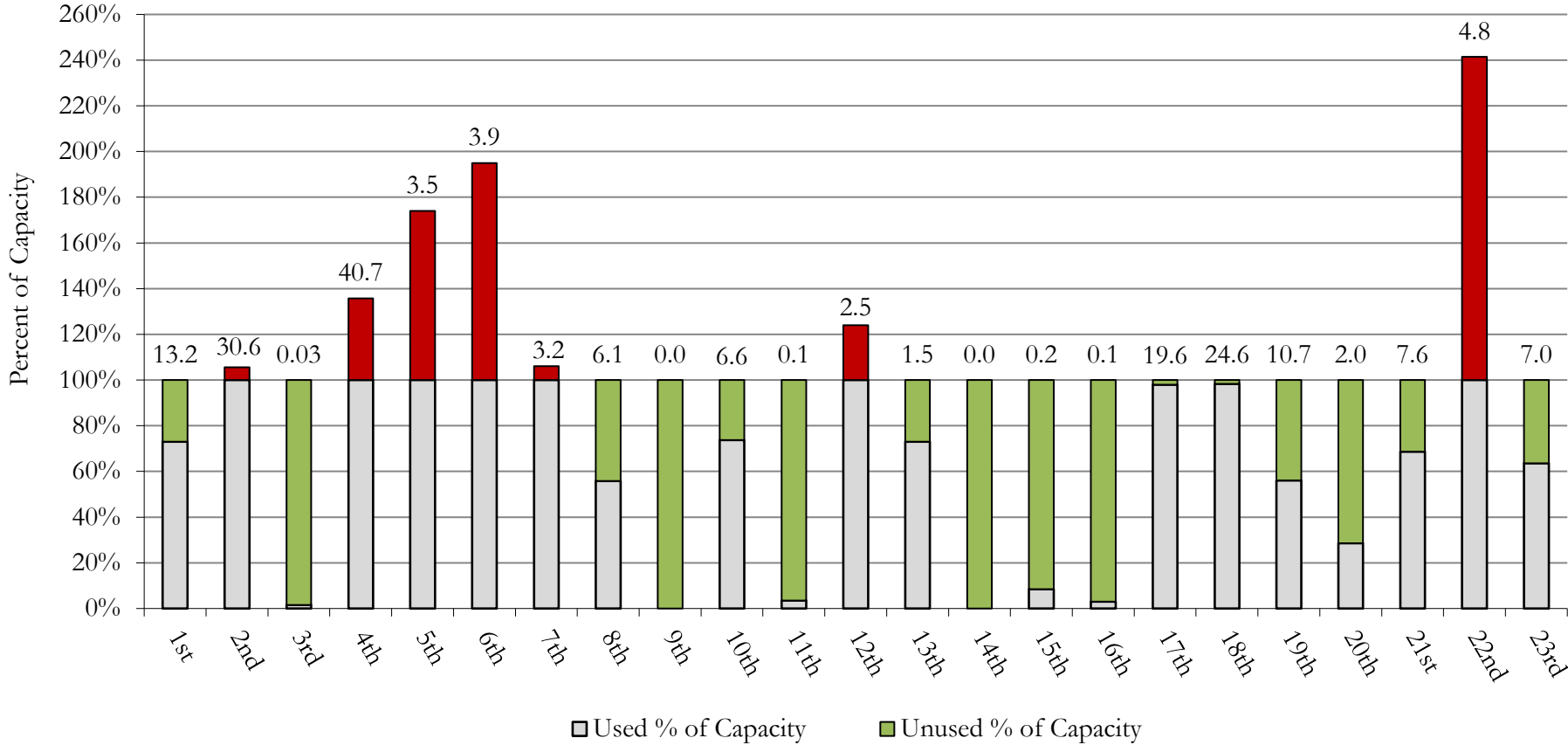
<sup>4</sup> Comprised of Douglas, Elbert, and Lincoln Counties, the 23rd Judicial District was established on January 14th, 2025, following departure from the 18th Judicial District (Arapahoe).

<sup>5</sup> Due to tracking limitations, the Detention ADP for these youth is not associated with one particular Judicial District.

# October 2025 DYS Population Report

## III. Detention Program Services Continued B. Unused Percent of Capacity by Judicial District

Monthly Detention Services  
Capacity Utilization by Judicial District <sup>1</sup>



<sup>1</sup> Monthly detention ADP is expressed by "Used % of Capacity" and is reported as the value above each bar for each Judicial District.

# October 2025 DYS Population Report

## III. Detention Program Services Continued

### C. Maximum Youth Served by Judicial District<sup>1</sup>

Region	JD	Detention Capacity <sup>4</sup>	Maximum Youth Served on a Single Day <sup>2,3</sup>					
			Detention ADP		October 2025		YTD	
			October 2025	YTD	Number of Youth	% of Detention Capacity	Number of Youth	% of Detention Capacity
<i>Central Region</i>								
	1st	18	13.2	12.7	15	83.3%	20	111.1%
	46064.0 2nd	29	30.6	26.9	35	120.7%	35	120.7%
	5th	2	3.5	2.9	4	200.0%	5	250.0%
	18th	25	24.6	26.2	34	136.0%	36	144.0%
	23rd <sup>5</sup>	11	7.0	5.3	9	81.8%	9	81.8%
<b>Central Region</b>		<b>85</b>	<b>78.8</b>	<b>74.0</b>	<b>89</b>	<b>104.7%</b>	<b>89</b>	<b>104.7%</b>
<i>Northeast Region</i>								
	8th	11	6.1	5.6	10	90.9%	10	90.9%
	13th	2	1.5	0.8	2	100.0%	3	150.0%
	17th	20	19.6	19.0	23	115.0%	27	135.0%
	19th	19	10.7	12.4	15	78.9%	16	84.2%
	20th	7	2.0	3.2	5	71.4%	8	114.3%
<b>Northeast Region</b>		<b>59</b>	<b>39.8</b>	<b>41.0</b>	<b>47</b>	<b>79.7%</b>	<b>50</b>	<b>84.7%</b>
<i>Southern Region</i>								
	3rd	2	0.03	0.01	1	50.0%	1	50.0%
	4th	30	40.7	41.6	49	163.3%	49	163.3%
	10th	9	6.6	6.9	9	100.0%	10	111.1%
	11th	2	0.1	0.6	1	50.0%	1	50.0%
	12th	2	2.5	1.7	3	150.0%	3	150.0%
	15th	2	0.2	0.1	1	50.0%	1	50.0%
	16th	2	0.1	0.3	1	50.0%	2	100.0%
<b>Southern Region</b>		<b>49</b>	<b>50.2</b>	<b>51.2</b>	<b>57</b>	<b>116.3%</b>	<b>57</b>	<b>116.3%</b>
<i>Western Region</i>								
	6th	2	3.9	2.4	5	250.0%	5	250.0%
	7th	3	3.2	2.5	5	166.7%	6	200.0%
	9th	2	0.0	1.1	0	0.0%	3	150.0%
	14th	2	0.0	0.0	0	0.0%	0	0.0%
	21st	11	7.6	8.2	10	90.9%	14	127.3%
	22nd	2	4.8	2.7	6	300.0%	6	300.0%
<b>Western Region</b>		<b>22</b>	<b>19.5</b>	<b>16.9</b>	<b>23</b>	<b>104.5%</b>	<b>23</b>	<b>104.5%</b>
<i>Missing JD or Multiple JDs</i>			<i>0.6</i>	<i>0.2</i>				
<b>Statewide</b>		<b>215</b>	<b>188.8</b>	<b>183.2</b>	<b>210</b>	<b>97.7%</b>	<b>210</b>	<b>97.7%</b>

<sup>1</sup> Maximum youth served is the highest number of youth in detention on a single day during the month or fiscal year.

<sup>2</sup> Regional figures are not the sum of Judicial Districts, but represent the maximum count on one day for the entire region.

<sup>3</sup> State figures are not the sum of regional figures, but represent the maximum count on one day for the entire state.

<sup>4</sup> Judicial District bed-capacity limits reflect allocations for FY 2025-26 as of July 1, 2025.

<sup>5</sup> Comprised of Douglas, Elbert, and Lincoln Counties, the 23rd Judicial District was established on January 14th, 2025, following departure from the 18th Judicial District (Arapahoe).

# October 2025 DYS Population Report

## III. Detention Program Services Continued

### D. Length of Stay (LOS) by Judicial District

Region	JD	YTD Detention Releases	YTD LOS (days)	LOS (days) Compared to State AVG
<i>Central Region</i>				
2/11/2026	1st	71	14.6	-9.5
	2nd	134	17.6	-6.5
	5th	6	11.9	-12.2
	18th	139	32.2	8.1
	23rd <sup>1</sup>	43	12.2	-11.9
	<b>Central Total</b>		<b>393</b>	<b>21.5</b>
<i>Northeast Region</i>				
	8th	30	15.5	-8.6
	13th	10	4.2	-19.9
	17th	91	35.6	11.5
	19th	64	25.5	1.4
	20th	18	22.3	-1.8
	<b>Northeast Total</b>	<b>213</b>	<b>27.2</b>	<b>3.1</b>
<i>Southern Region</i>				
	3rd	1	1.0	-23.1
	4th	152	28.2	4.1
	10th	41	19.1	-5.0
	11th	3	36.4	12.3
	12th	6	6.9	-17.2
	15th	2	3.0	-21.1
	16th	5	8.5	-15.6
	<b>Southern Total</b>	<b>210</b>	<b>25.1</b>	<b>1.0</b>
<i>Western Region</i>				
	6th	6	16.6	-7.5
	7th	10	14.6	-9.5
	9th	7	20.0	-4.1
	14th	0	0.0	-24.1
	21st	56	20.2	-3.9
	22nd	12	21.5	-2.6
	<b>Western Total</b>	<b>91</b>	<b>19.5</b>	<b>-4.6</b>
<b>Statewide Total</b>		<b>883</b>	<b>24.1</b>	<b>-</b>

<sup>1</sup> Comprised of Douglas, Elbert, and Lincoln Counties, the 23rd Judicial District was established on January 14th, 2025, following departure from the 18th Judicial District (Arapahoe).

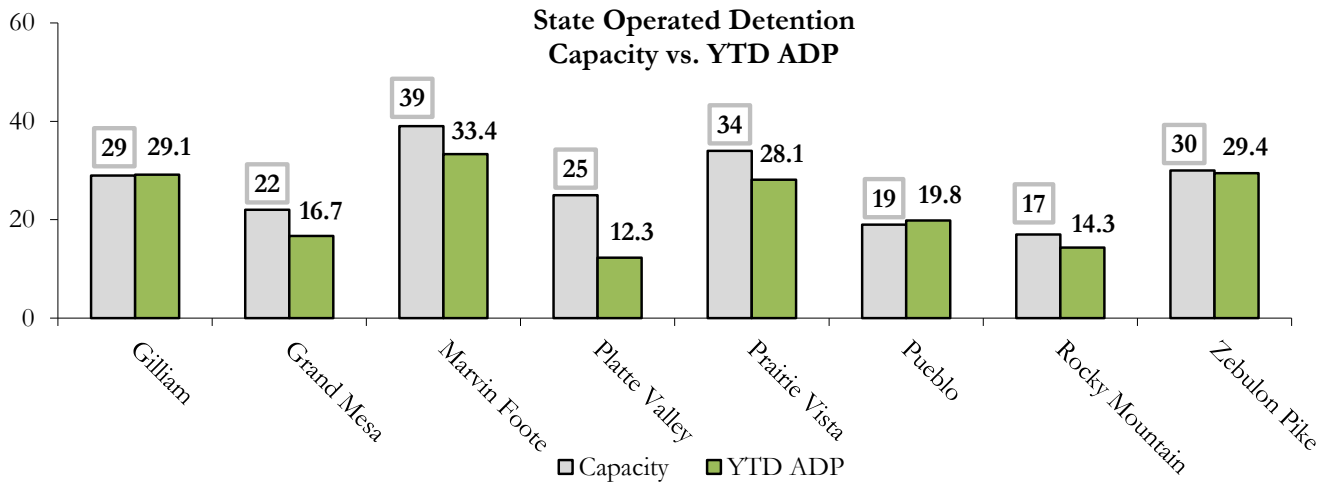
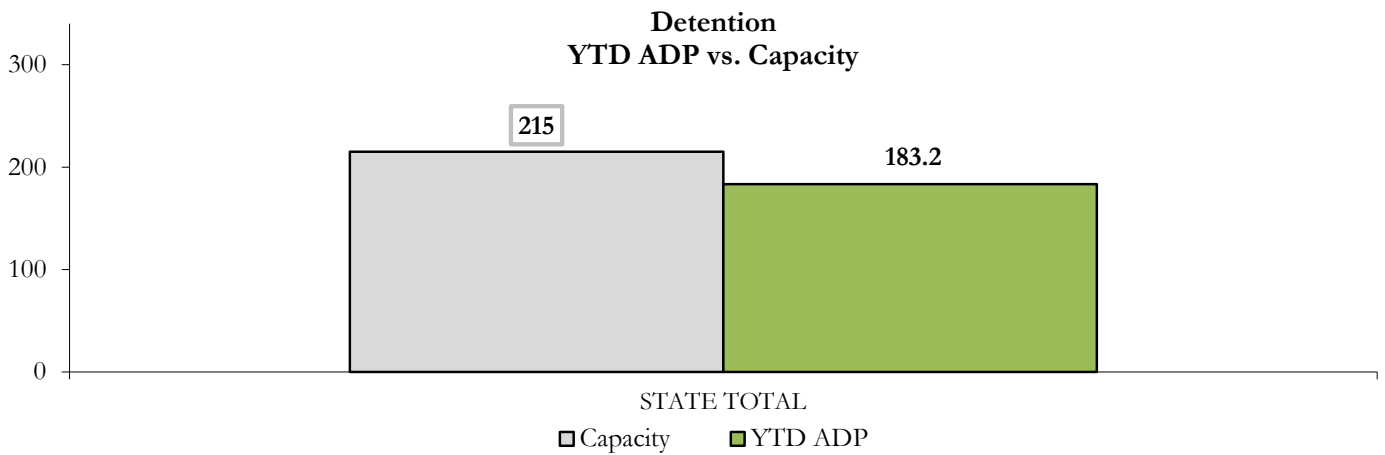
# October 2025

## DYS Population Report

### III. Detention Program Services Continued

#### E. Detention Data & Capacity by Youth Center

State-Operated Detention							
Youth Center	Operating Capacity <sup>1</sup>	Average Daily Population			New Admissions		LOS (days)
		Monthly	YTD	YTD % of Cap	Monthly	YTD	YTD
Rocky Mountain	17	14.5	14.3	84.3%	14	64	16.8
Gilliam	29	33.6	29.1	100.5%	41	133	19.2
Grand Mesa	22	18.8	16.7	75.9%	25	91	20.1
Marvin Foote	39	33.3	33.4	85.5%	51	201	26.8
Platte Valley	25	12.1	12.3	49.1%	28	87	19.3
Prairie Vista	34	27.6	28.1	82.8%	35	127	33.6
Pueblo	19	19.5	19.8	104.4%	36	113	20.5
Zebulon Pike	30	29.4	29.4	98.2%	26	97	30.3
<b>State Total</b>	<b>215</b>	<b>188.8</b>	<b>183.2</b>	<b>85.2%</b>	<b>256</b>	<b>913</b>	<b>24.1</b>



<sup>1</sup> Youth Center bed-capacity limits reflect allocations for FY 2025-26 as of July 1, 2025.

# October 2025

## DYS Population Report

### III. Detention Program Services Continued

#### F. Detention Data by Region

Youth Center & Region	Operating Capacity <sup>1</sup>	Maximum Count <sup>2</sup>			ADP
		October 2025	YTD	% of Capacity YTD	YTD
<i>Central Region</i>					
Gilliam	29	38	38	131.0%	29.1
## Marvin Foote	39	43	44	112.8%	33.4
Rocky Mountain	17	17	20	117.6%	14.3
<b>Central Total</b>	<b>85</b>	<b>89</b>	<b>89</b>	<b>104.7%</b>	<b>76.8</b>
<i>Northeast Region</i>					
Platte Valley	25	18	18	72.0%	12.3
Prairie Vista	34	31	36	105.9%	28.1
<b>Northeast Total</b>	<b>59</b>	<b>47</b>	<b>50</b>	<b>84.7%</b>	<b>40.4</b>
<i>Southern Region</i>					
Pueblo	19	26	26	136.8%	19.8
Zebulon Pike	30	31	32	106.7%	29.4
<b>Southern Total</b>	<b>49</b>	<b>57</b>	<b>57</b>	<b>116.3%</b>	<b>49.3</b>
<i>Western Region</i>					
Grand Mesa	22	23	23	104.5%	16.7
<b>Western Total</b>	<b>22</b>	<b>23</b>	<b>23</b>	<b>104.5%</b>	<b>16.7</b>
<b>STATE TOTAL</b>	<b>215</b>	<b>210</b>	<b>210</b>	<b>97.7%</b>	<b>183.2</b>

<sup>1</sup> Youth Center bed-capacity limits reflect allocations for FY 2025-26 as of July 1, 2025.

<sup>2</sup> Region and state maximum count totals are maximum counts of youth in each Region, and throughout Colorado. Maximum count totals are not regional or state sums.

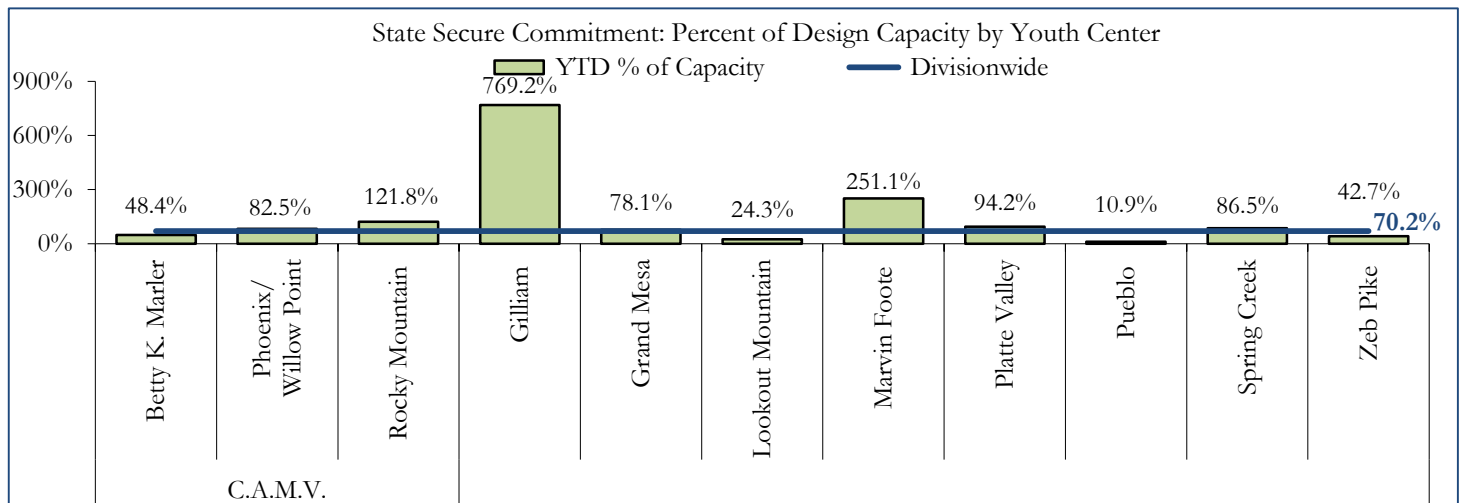
# October 2025

## DYS Population Report

### IV. Commitment Services

#### A. State Secure ADP by Youth Center

STATE SECURE + ASSESSMENT								
Youth Center	Assessment		ADP Secure		Total		Capacity Design	
	Monthly	YTD	Monthly	YTD	Monthly	YTD	Capacity <sup>1</sup>	% of YTD
Campus at Mount View								
Betty K. Marler	1.8	0.5	12.2	14.1	14.0	14.5	30	48.4%
Phoenix	0.0	0.0	32.8	29.7	32.8	29.7	36	82.5%
Rocky Mountain	0.3	0.4	3.3	2.0	3.6	2.4	2	121.8%
Gilliam	0.6	0.7	12.5	7.0	13.2	7.7	1	769.2%
Grand Mesa	0.8	0.5	25.0	25.3	25.8	25.8	33	78.1%
Lookout Mountain <sup>2</sup>	0.0	0.0	0.0	17.5	0.0	17.5	72	24.3%
Marvin Foote	2.4	1.0	6.6	4.0	9.0	5.0	2	251.1%
Platte Valley	5.0	3.6	48.3	45.4	53.3	49.0	52	94.2%
Prairie Vista	0.3	0.5	0.2	0.6	0.5	1.1	-	-
Pueblo	0.0	0.0	0.02	0.1	0.02	0.1	1	10.9%
Spring Creek	2.9	2.3	43.5	41.0	46.4	43.3	50	86.5%
Zebulon Pike	0.0	0.0	0.5	0.4	0.5	0.4	1	42.7%
<b>Assessment Total</b>	<b>14.1</b>	<b>9.5</b>	<b>-</b>	<b>-</b>	<b>14.1</b>	<b>9.5</b>	<b>30</b>	
<b>Secure Total</b>	<b>-</b>	<b>-</b>	<b>185.0</b>	<b>187.1</b>	<b>185.0</b>	<b>187.1</b>	<b>255</b>	
<b>STATE SECURE TOTAL</b>					<b>199.1</b>	<b>196.6</b>	<b>280</b>	<b>70.2%</b>



<sup>1</sup> Youth center bed-capacity design limits reflect allocations for FY 2025-26 as of July 1, 2025.

<sup>2</sup> Beginning July 1, 2025, Aspire, Golden Peak, and Summit converged to a single Youth Center: Lookout Mountain YSC.

# October 2025 DYS Population Report

## IV. Commitment Services Continued

### B. Contract, Community, & Other Residential ADP by Youth Center

Youth Center/Program	ADP	
	Monthly	YTD
<b>CONTRACT: STAFF SUPERVISED</b>		
Alternative Homes For Youth - Greeley	12.6	11.5
Gateway Residential Program - Delta	2.4	3.3
Third Way Center - Lowry	1.0	2.1
<b>Staff Supervised Subtotal</b>	<b>16.0</b>	<b>16.9</b>
<b>CONTRACT: COMMUNITY RESIDENTIAL</b>		
Ariel Clinical Services	0.9	1.2
Mt Evans Qualifying House	8.2	8.7
Third Way Center, Lincoln	2.4	3.1
Third Way Center, Pontiac	1.0	0.3
Third Way Center, York	1.4	0.6
<b>Community Residential Subtotal</b>	<b>13.9</b>	<b>13.9</b>
<b>(Contract) Staff Supervised + Community Subtotal</b>	<b>29.9</b>	<b>30.8</b>
<b>OTHER RESIDENTIAL</b>		
Hospital	0.2	0.07
Residential Drug/Alcohol Program	0.7	0.6
Residential Mental Health Program	0.1	0.2
Residential Work Program	0.0	0.3
Shelter Care (short term)	0.5	0.7
<b>Other Residential Subtotal</b>	<b>1.5</b>	<b>1.8</b>
<i>Trails Corrections Currently in Progress</i>	<i>0.7</i>	<i>0.2</i>
<b>COMMITTED RESIDENTIAL TOTAL</b>	<b>231.2</b>	<b>229.4</b>

# October 2025 DYS Population Report

## V. Commitment ADP and New Commitments

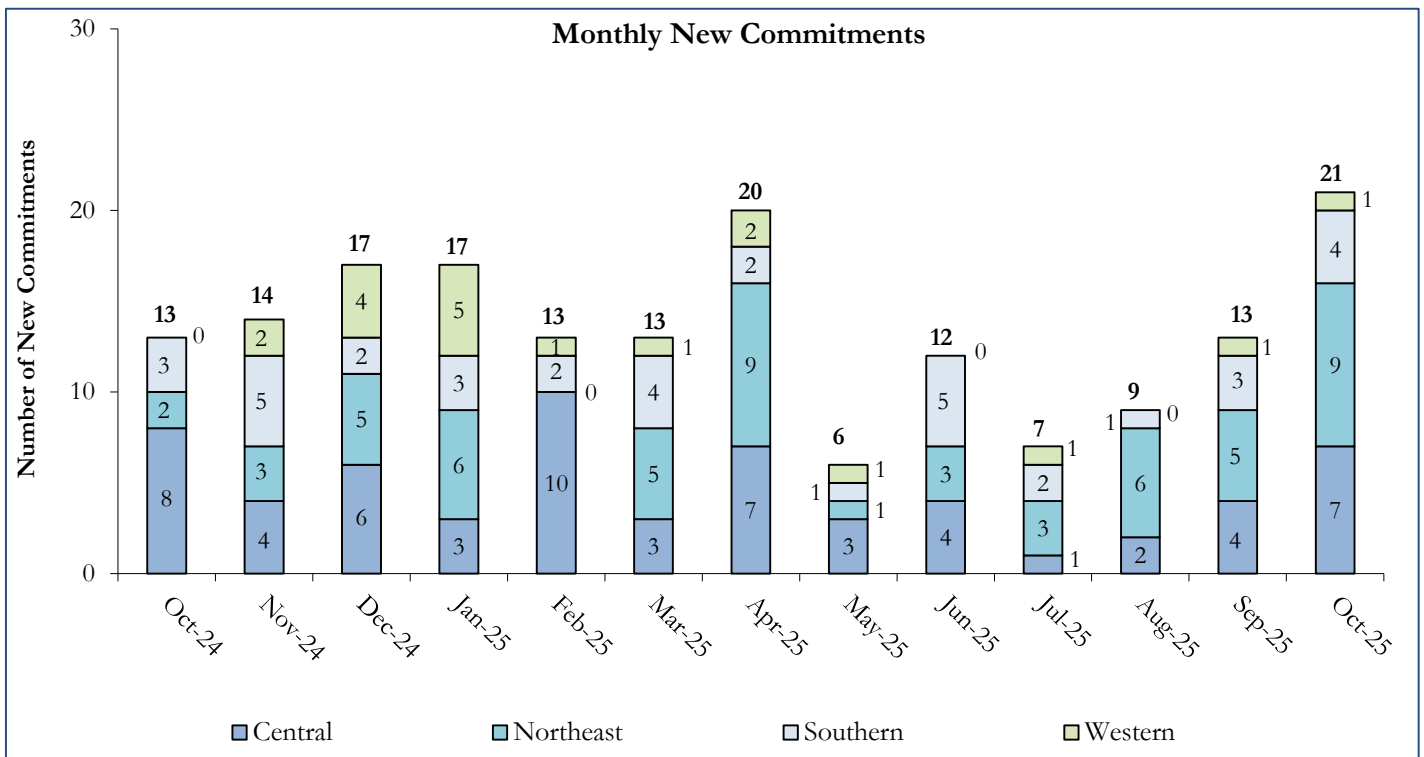
### A. Commitment ADP and New Commitments

#### COMMITMENT ADP

Region	October	% Change from Prior Month	YTD	% Change from Prior FY
Central	84.0	-0.9%	84.2	-19.0%
Northeast	69.8	4.8%	68.7	-12.5%
Southern	47.8	6.0%	45.8	-21.5%
Western	29.7	1.0%	30.7	-9.4%
<b>Commitment ADP</b>	<b>231.2</b>	<b>2.4%</b>	<b>229.4</b>	<b>-16.5%</b>

#### NEW COMMITMENTS

Region	FY 25-26		FY 24-25		% Change from last YTD
	October	YTD	October	YTD	
Central	7	14	8	29	-51.7%
Northeast	9	23	2	18	27.8%
Southern	4	10	3	16	-37.5%
Western	1	3	0	3	0.0%
<b>TOTAL</b>	<b>21</b>	<b>50</b>	<b>13</b>	<b>66</b>	<b>-24.2%</b>



# October 2025 DYS Population Report

## V. Commitment ADP and New Commitments Continued

### B. New Commitments by Judicial District

Region	JD <sup>1</sup>	2026 Population Estimates <sup>2</sup>	ADP <sup>3</sup>		New Commitments		
			October 2025	YTD	October 2025	YTD	YTD Rate <sup>4</sup>
<i>Central Region</i>							
	46064.0 1st	51,087	15.1	15.1	4	6	1.2
	2nd	54,544	27.7	27.3	1	5	0.9
	5th	8,824	2.0	2.0	0	0	0.0
	18th	68,920	36.3	35.6	5	7	1.0
	23rd <sup>5</sup>	51,398	8.3	8.8	0	0	0.0
<b>Central Total</b>		<b>234,773</b>	<b>89.4</b>	<b>88.9</b>	<b>10</b>	<b>18</b>	<b>0.8</b>
<i>Northeast Region</i>							
	8th	34,422	13.9	12.1	3	5	1.5
	13th	8,779	2.0	2.5	0	0	0.0
	17th	69,647	18.6	20.0	2	6	0.9
	19th	44,213	26.5	25.8	1	8	1.8
	20th	27,396	5.3	5.1	1	1	0.4
<b>Northeast Total</b>		<b>184,457</b>	<b>66.3</b>	<b>65.5</b>	<b>7</b>	<b>20</b>	<b>1.1</b>
<i>Southern Region</i>							
	3rd	1,626	0.0	0.0	0	0	0.0
	4th	76,987	32.9	31.6	2	7	0.9
	10th	16,613	11.9	12.2	1	2	1.2
	11th	6,743	0.0	0.0	0	0	0.0
	12th	4,906	1.0	1.0	0	0	0.0
	15th	2,090	1.0	0.8	0	0	0.0
	16th	2,597	1.0	1.0	0	0	0.0
<b>Southern Total</b>		<b>111,562</b>	<b>47.8</b>	<b>46.5</b>	<b>3</b>	<b>9</b>	<b>0.8</b>
<i>Western Region</i>							
	6th	6,555	2.1	1.9	1	2	3.1
	7th	9,637	1.0	1.0	0	0	0.0
	9th	9,121	1.0	1.0	0	0	0.0
	14th	4,898	1.0	1.1	0	0	0.0
	21st	15,129	17.6	18.6	0	1	0.7
	22nd	2,739	5.0	5.0	0	0	0.0
<b>Western Total</b>		<b>48,079</b>	<b>27.7</b>	<b>28.5</b>	<b>1</b>	<b>3</b>	<b>0.6</b>
<b>Statewide Total</b>		<b>578,871</b>	<b>231.2</b>	<b>229.4</b>	<b>21</b>	<b>50</b>	<b>0.9</b>

<sup>1</sup> JD represents the Judicial District in which the client was committed. Regional totals are a sum of their respective Judicial Districts.

<sup>2</sup> Source: DOLA Estimates.

<sup>3</sup> Due to rounding, totals shown may not be an exact sum of the subtotals.

<sup>4</sup> Per 10,000 youth in the population.

<sup>5</sup> Comprised of Douglas, Elbert, and Lincoln Counties, the 23rd Judicial District was established on January 14th, 2025, following departure from the 18th Judicial District (Arapahoe).

# October 2025 DYS Population Report

## VI. Parole Services

### PAROLE ADP

Region	Monthly	YTD		% Change from Prior Year
		FY 25-26	FY 24-25	
Central	26.6	32.9	39.9	-17.6%
Northeast	30.8	27.7	26.9	3.1%
Southern	25.9	28.8	13.4	115.2%
Western	11.9	12.1	15.4	-21.4%
<b>Total</b>	<b>95.3</b>	<b>101.5</b>	<b>95.6</b>	<b>6.2%</b>

Region	Parole Intakes		Discharges		LOS
	Monthly	YTD	Monthly	YTD	
Central	3	9	5	28	7.4
Northeast	3	22	5	16	6.0
Southern	0	8	4	21	6.6
Western	0	5	2	12	7.0
<b>Total</b>	<b>6</b>	<b>44</b>	<b>16</b>	<b>77</b>	<b>6.8</b>

Monthly Parole ADP

