

September 2025 FY 2025-2026 MONTHLY POPULATION REPORT

Prepared by the Division of Youth Services (DYS)
Data Management and Analysis
10/16/2025

This document can be provided in a fully accessible format upon request. Please visit the [Accessibility at CDHS](#) webpage where you can submit your request for accessibility accommodation via the [CDHS Digital Accessibility and Support Form](#).



COLORADO
Division of Youth Services
Office of Children, Youth & Families

September 2025

DYS Population Report

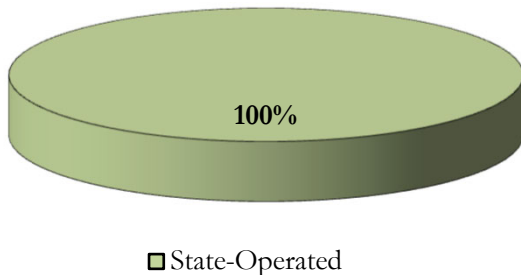
I.	Summary Population Data	1
II.	Population Trends	2
III.	Detention Program Services	
	A. Detention ADP by Judicial District	3
	B. Unused Percent of Capacity by Judicial District	4
	C. Maximum Youth Served by Judicial District	5
	D. Length of Stay (LOS) by Judicial District	6
	E. Detention Data & Capacity by Youth Center	7
	F. Detention Data by Region	8
IV.	Commitment Services	
	A. State Secure ADP by Youth Center	9
	B. Contract, Community, & Other Residential ADP by Youth Center	10
V.	Commitment ADP and New Commitments	
	A. Commitment ADP and New Commitments	11
	B. New Commitments by Judicial District	12
VI.	Parole Services	13

September 2025 DYS Population Report

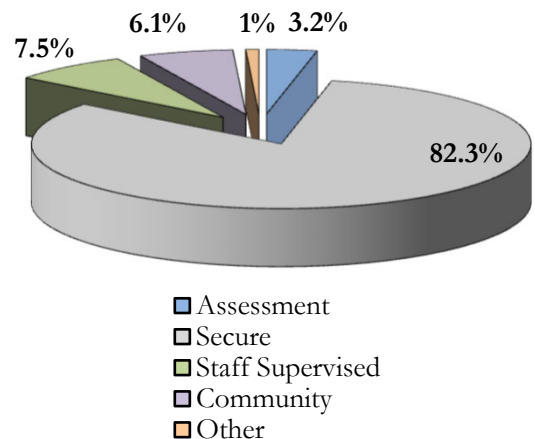
I. Summary Population Data

	September 2025		YTD	
	ADP	% change	ADP	LOS
DETAINED YOUTH				
State-Operated	188.2	6.5%	181.4	25.2 days
Total Detained	188.2	6.5%	181.4	25.2 days
COMMITTED YOUTH				
Assessment	6.0	-17.6%	7.4	23.3 days
Secure	185.5	-2.0%	188.3	15.2 months
Staff Supervised	18.2	9.1%	17.3	6.2 months
Community Residential	14.5	2.8%	14.0	3.5 months
Other Residential	1.6	-32.2%	1.9	1.3 months
<i>Trails Corrections Currently in Progress</i>	<i>0.0</i>		<i>0.0</i>	
Total Committed Residential	225.8	-1.8%	228.8	16.8 months
<i>Committed Residential w/o Boulder</i>	<i>225.8</i>	<i>-1.8%</i>	<i>228.8</i>	
PAROLED YOUTH				
Total Paroled	95.1	-10.6%	103.6	6.9 months
TOTAL STATEWIDE ADP				
DETENTION	188.2	6.5%	181.4	25.2 days
COMMITMENT	225.8	-1.8%	228.8	16.8 months
PAROLE	95.1	-10.6%	103.6	6.9 months
STATE TOTAL	509.0	-0.7%	513.8	

Detention ADP YTD¹



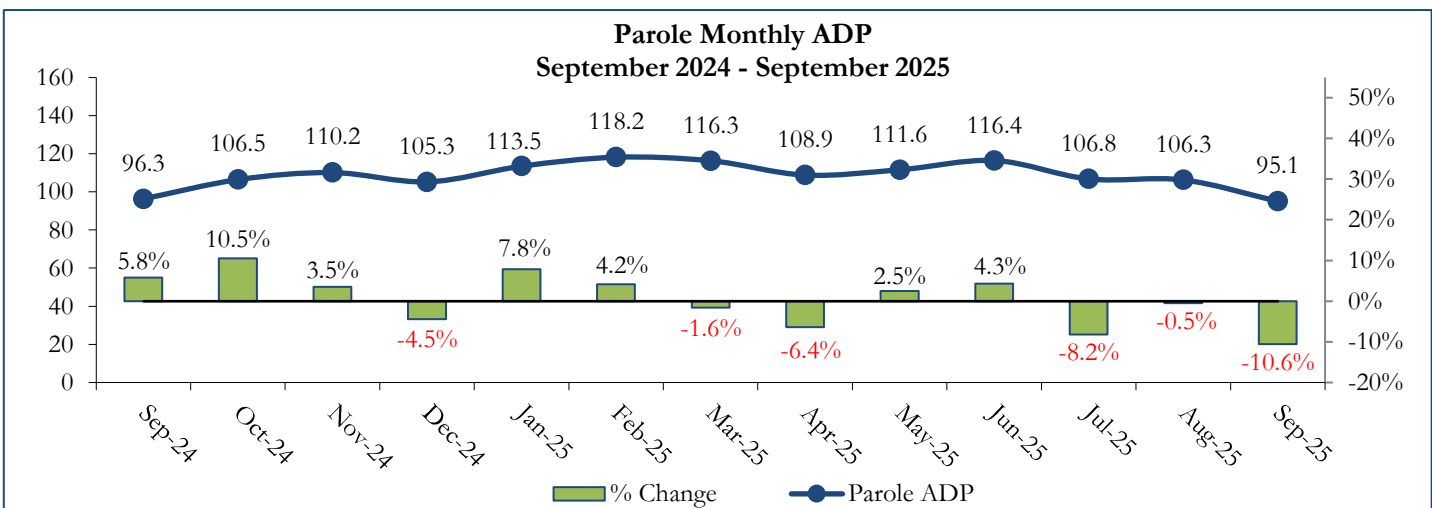
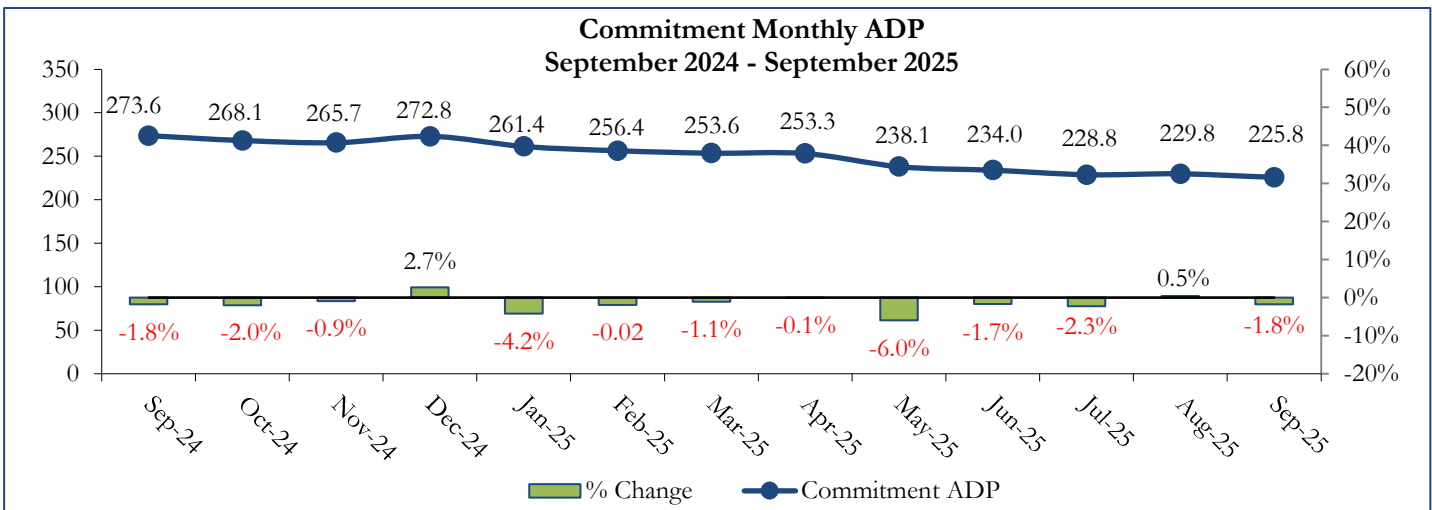
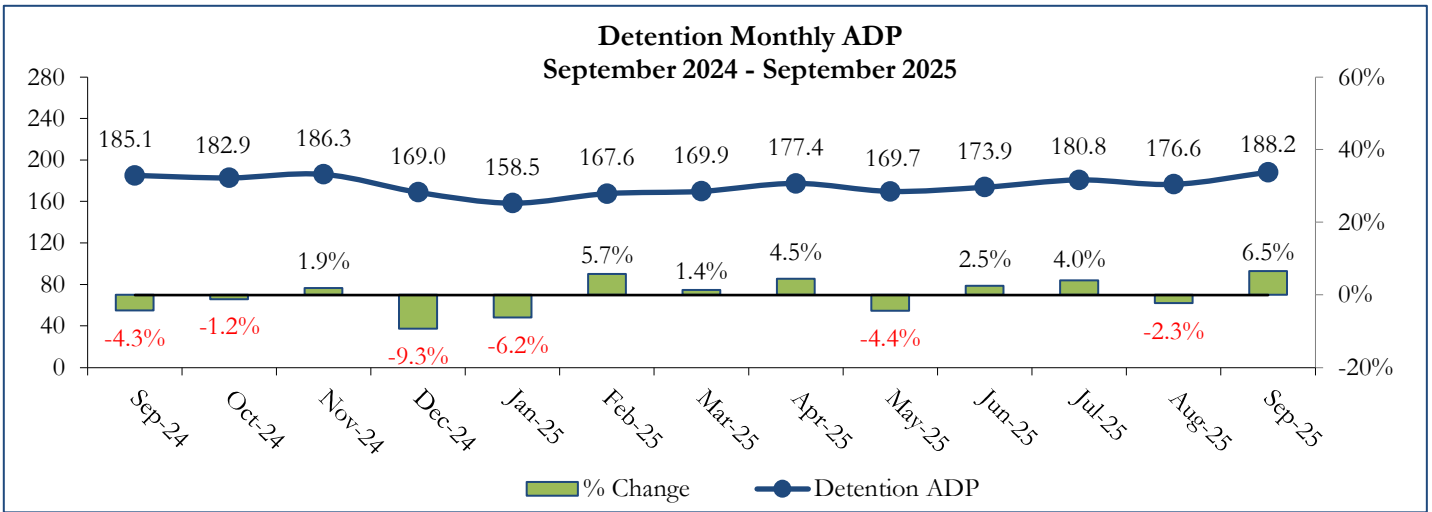
Commitment ADP YTD¹



¹ Due to rounding, totals may not sum to 100%.

September 2025 DYS Population Report

II. Population Trends



September 2025 DYS Population Report

III. Detention Program Services

A. Detention ADP by Judicial District

Region	JD	Capacity ¹	September 2025		YTD		2026 Population Estimates ²	New Admits		
			ADP	% of Cap	ADP	% of Cap		Monthly	YTD	YTD New Admit Rate ³
<i>Central Region</i>										
	1st	18	15.0	83.6%	12.5	69.5%	51,087	23	63	12.3
	2nd	29	23.9	82.4%	25.7	88.4%	54,544	23	88	16.1
	5th	2	3.6	181.0%	2.8	137.5%	8,824	2	7	7.9
	18th	25	28.1	112.2%	27.2	108.7%	68,920	26	96	13.9
	23rd ⁴	11	5.6	51.0%	4.7	42.5%	51,398	10	36	7.0
Central Total		85	76.2	89.7%	72.8	85.6%	234,773	84	290	12.4
<i>Northeast Region</i>										
	8th	11	6.3	57.1%	5.7	52.2%	34,422	9	19	5.5
	13th	2	1.3	64.5%	0.6	29.0%	8,779	4	8	9.1
	17th	20	21.7	108.3%	18.8	94.0%	69,647	26	68	9.8
	19th	19	11.5	60.7%	12.7	66.6%	44,213	13	42	9.5
	20th	7	5.1	73.3%	3.6	51.4%	27,396	5	13	4.7
Northeast Total		59	45.9	77.8%	41.4	70.1%	184,457	57	150	8.1
<i>Southern Region</i>										
	3rd	2	0.0	0.0%	0.0	0.0%	1,626	0	0	0.0
	4th	30	39.3	130.8%	41.5	138.4%	76,987	34	106	13.8
	10th	9	7.8	87.1%	7.1	78.8%	16,613	9	32	19.3
	11th	2	0.5	23.0%	0.8	40.0%	6,743	0	1	1.5
	12th	2	1.5	75.0%	1.4	68.5%	4,906	3	6	12.2
	15th	2	0.1	6.5%	0.1	3.5%	2,090	1	2	9.6
	16th	2	0.8	41.5%	0.4	22.0%	2,597	2	4	15.4
Southern Total		49	50.0	102.1%	51.3	104.7%	111,562	49	151	13.5
<i>Western Region</i>										
	6th	2	1.9	96.0%	1.8	91.0%	6,555	3	6	9.2
	7th	3	1.8	61.3%	2.3	76.3%	9,637	6	7	7.3
	9th	2	1.5	73.0%	1.5	74.0%	9,121	2	6	6.6
	14th	2	0.0	0.0%	0.0	0.0%	4,898	0	0	0.0
	21st	11	8.6	78.5%	8.4	76.5%	15,129	15	38	25.1
	22nd	2	2.2	110.5%	2.0	98.5%	2,739	1	9	32.9
Western Total		22	16.1	73.0%	16.0	72.6%	48,079	27	66	13.7
Unknown⁵			0.0		0.0			0	0	
Statewide Total		215	188.2	87.5%	181.4	84.4%	578,871	217	657	11.3

¹ Judicial District bed-capacity limits reflect allocations for FY 2025-26 as of July 1, 2025

² Source: DOLA Estimates.

³ Per 10,000 youth in the population.

⁴ Comprised of Douglas, Elbert, and Lincoln Counties, the 23rd Judicial District was established on January 14th, 2025, following departure from the 18th Judicial District (Arapahoe).

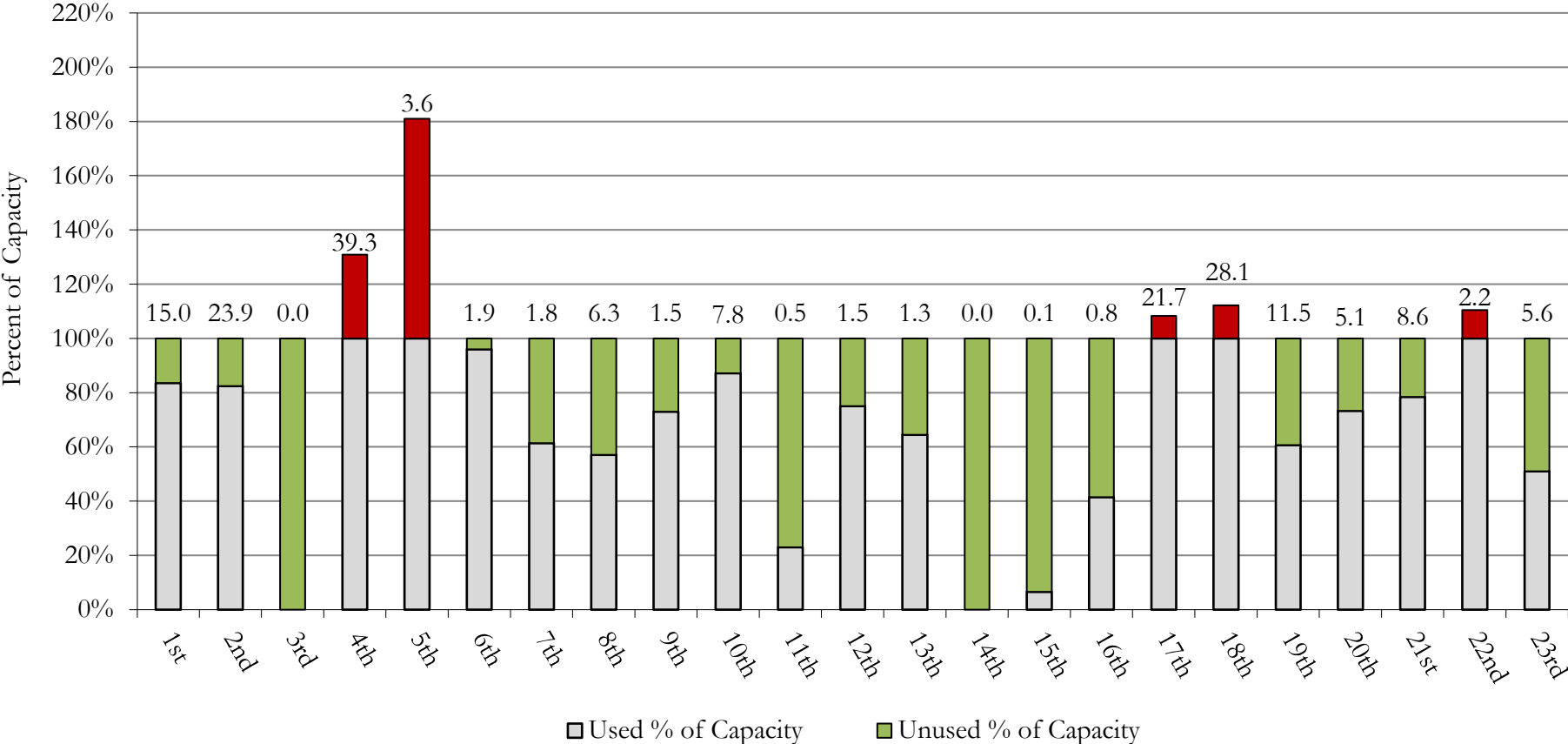
⁵ Due to tracking limitations, the Detention ADP for these youth is not associated with one particular Judicial District.

September 2025 DYS Population Report

III. Detention Program Services Continued

B. Unused Percent of Capacity by Judicial District

Monthly Detention Services
Capacity Utilization by Judicial District ¹



¹ Monthly detention ADP is expressed by "Used % of Capacity" and is reported as the value above each bar for each Judicial District.

September 2025 DYS Population Report

III. Detention Program Services Continued

C. Maximum Youth Served by Judicial District¹

Region	JD	Detention Capacity ⁴	Detention ADP		Maximum Youth Served on a Single Day ^{2,3}			
			September 2025	YTD	September 2025		YTD	
					Number of Youth	% of Detention Capacity	Number of Youth	% of Detention Capacity
<i>Central Region</i>								
	1st	18	15.0	12.5	20	111.1%	20	111.1%
	2nd	29	23.9	25.7	29	100.0%	32	110.3%
	5th	2	3.6	2.8	5	250.0%	5	250.0%
	18th	25	28.1	27.2	34	136.0%	36	144.0%
	23rd ⁵	11	5.6	4.7	8	72.7%	8	72.7%
Central Region		85	76.2	72.8	87	102.4%	87	102.4%
<i>Northeast Region</i>								
	8th	11	6.3	5.7	8	72.7%	8	72.7%
	13th	2	1.3	0.6	3	150.0%	3	150.0%
	17th	20	21.7	18.8	27	135.0%	27	135.0%
	19th	19	11.5	12.7	15	78.9%	16	84.2%
	20th	7	5.1	3.6	8	114.3%	8	114.3%
Northeast Region		59	45.9	41.4	50	84.7%	50	84.7%
<i>Southern Region</i>								
	3rd	2	0.0	0.0	0	0.0%	0	0.0%
	4th	30	39.3	41.5	45	150.0%	49	163.3%
	10th	9	7.8	7.1	10	111.1%	10	111.1%
	11th	2	0.5	0.8	1	50.0%	1	50.0%
	12th	2	1.5	1.4	3	150.0%	3	150.0%
	15th	2	0.1	0.1	1	50.0%	1	50.0%
	16th	2	0.8	0.4	2	100.0%	2	100.0%
Southern Region		49	50.0	51.3	53	108.2%	56	114.3%
<i>Western Region</i>								
	6th	2	1.9	1.8	3	150.0%	4	200.0%
	7th	3	1.8	2.3	6	200.0%	6	200.0%
	9th	2	1.5	1.5	3	150.0%	3	150.0%
	14th	2	0.0	0.0	0	0.0%	0	0.0%
	21st	11	8.6	8.4	12	109.1%	14	127.3%
	22nd	2	2.2	2.0	3	150.0%	4	200.0%
Western Region		22	16.1	16.0	23	104.5%	23	104.5%
<i>Missing JD or Multiple JDs</i>			<i>0.0</i>	<i>0.0</i>				
Statewide		215	188.2	181.4	201	93.5%	201	93.5%

¹ Maximum youth served is the highest number of youth in detention on a single day during the month or fiscal year.

² Regional figures are not the sum of Judicial Districts, but represent the maximum count on one day for the entire region.

³ State figures are not the sum of regional figures, but represent the maximum count on one day for the entire state.

⁴ Judicial District bed-capacity limits reflect allocations for FY 2025-26 as of July 1, 2025.

⁵ Comprised of Douglas, Elbert, and Lincoln Counties, the 23rd Judicial District was established on January 14th, 2025, following departure from the 18th Judicial District (Arapahoe).

September 2025 DYS Population Report

III. Detention Program Services Continued

D. Length of Stay (LOS) by Judicial District

Region	JD	YTD Detention Releases	YTD LOS (days)	LOS (days) Compared to State AVG
<i>Central Region</i>				
	1st	58	15.6	-9.6
	2nd	92	20.3	-4.9
	5th	6	11.9	-13.3
	18th	102	32.2	7.0
	23rd ¹	33	9.6	-15.7
Central Total		291	22.1	-3.1
<i>Northeast Region</i>				
	8th	19	18.8	-6.4
	13th	7	4.3	-20.9
	17th	66	33.4	8.2
	19th	46	27.7	2.5
	20th	13	21.9	-3.3
Northeast Total		151	27.5	2.3
<i>Southern Region</i>				
	3rd	0	0.0	-25.2
	4th	105	30.5	5.2
	10th	33	20.8	-4.4
	11th	2	53.6	28.4
	12th	4	5.1	-20.1
	15th	2	3.0	-22.2
	16th	4	10.1	-15.1
Southern Total		150	27.1	1.8
<i>Western Region</i>				
	6th	5	10.8	-14.4
	7th	6	19.9	-5.3
	9th	7	20.0	-5.2
	14th	0	0.0	-25.2
	21st	35	22.8	-2.4
	22nd	8	28.0	2.8
Western Total		61	21.9	-3.3
Statewide Total		634	25.2	-

¹ Comprised of Douglas, Elbert, and Lincoln Counties, the 23rd Judicial District was established on January 14th, 2025, following departure from the 18th Judicial District (Arapahoe).

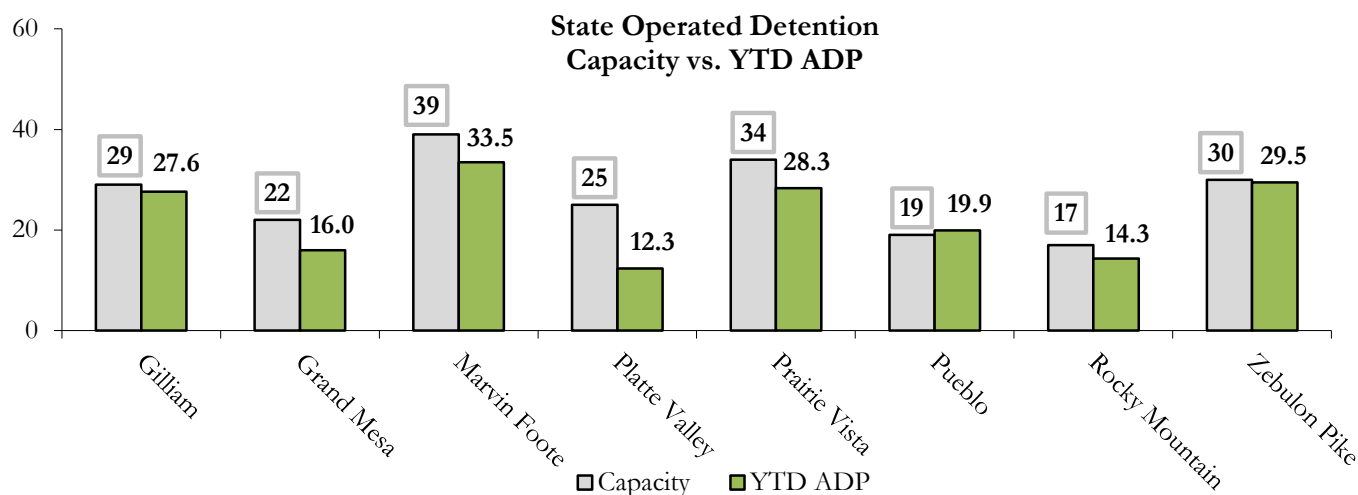
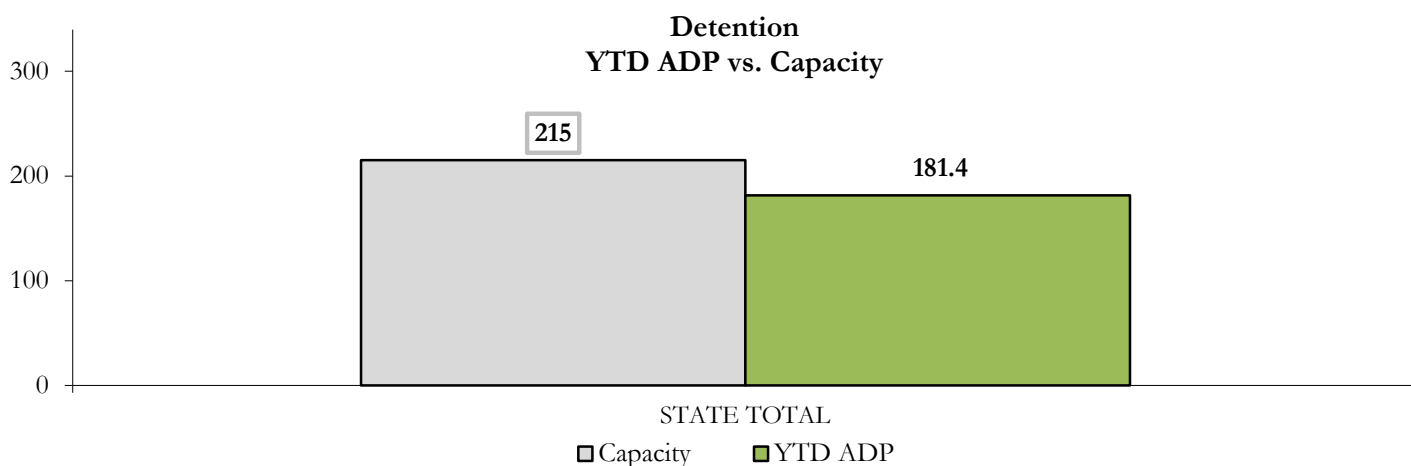
September 2025

DYS Population Report

III. Detention Program Services Continued

E. Detention Data & Capacity by Youth Center

State-Operated Detention							
Youth Center	Operating Capacity ¹	Average Daily Population			New Admissions		LOS (days)
		Monthly	YTD	YTD % of Cap	Monthly	YTD	YTD
Rocky Mountain	17	15.8	14.3	84.0%	19	50	19.0
Gilliam	29	26.3	27.6	95.2%	26	92	22.0
Grand Mesa	22	16.1	16.0	72.7%	27	66	22.3
Marvin Foote	39	35.0	33.5	85.8%	39	150	26.2
Platte Valley	25	13.9	12.3	49.4%	27	59	21.9
Prairie Vista	34	31.7	28.3	83.3%	31	92	32.4
Pueblo	19	19.7	19.9	104.8%	30	77	23.4
Zebulon Pike	30	29.7	29.5	98.2%	18	71	30.4
State Total	215	188.2	181.4	84.4%	217	657	25.2



¹ Youth Center bed-capacity limits reflect allocations for FY 2025-26 as of July 1, 2025.

September 2025

DYS Population Report

III. Detention Program Services Continued

F. Detention Data by Region

Youth Center & Region	Operating Capacity ¹	Maximum Count ²			ADP
		September 2025	YTD	% of Capacity YTD	YTD
<i>Central Region</i>					
Gilliam	29	31	34	117.2%	27.6
Marvin Foote	39	44	44	112.8%	33.5
Rocky Mountain	17	20	20	117.6%	14.3
Central Total	85	87	87	102.4%	75.4
<i>Northeast Region</i>					
Platte Valley	25	18	18	72.0%	12.3
Prairie Vista	34	36	36	105.9%	28.3
Northeast Total	59	50	50	84.7%	40.7
<i>Southern Region</i>					
Pueblo	19	23	26	136.8%	19.9
Zebulon Pike	30	32	32	106.7%	29.5
Southern Total	49	53	56	114.3%	49.4
<i>Western Region</i>					
Grand Mesa	22	23	23	104.5%	16.0
Western Total	22	23	23	104.5%	16.0
STATE TOTAL	215	201	201	93.5%	181.4

¹ Youth Center bed-capacity limits reflect allocations for FY 2025-26 as of July 1, 2025.

² Region and state maximum count totals are maximum counts of youth in each Region, and throughout Colorado. Maximum count totals are not regional or state sums.

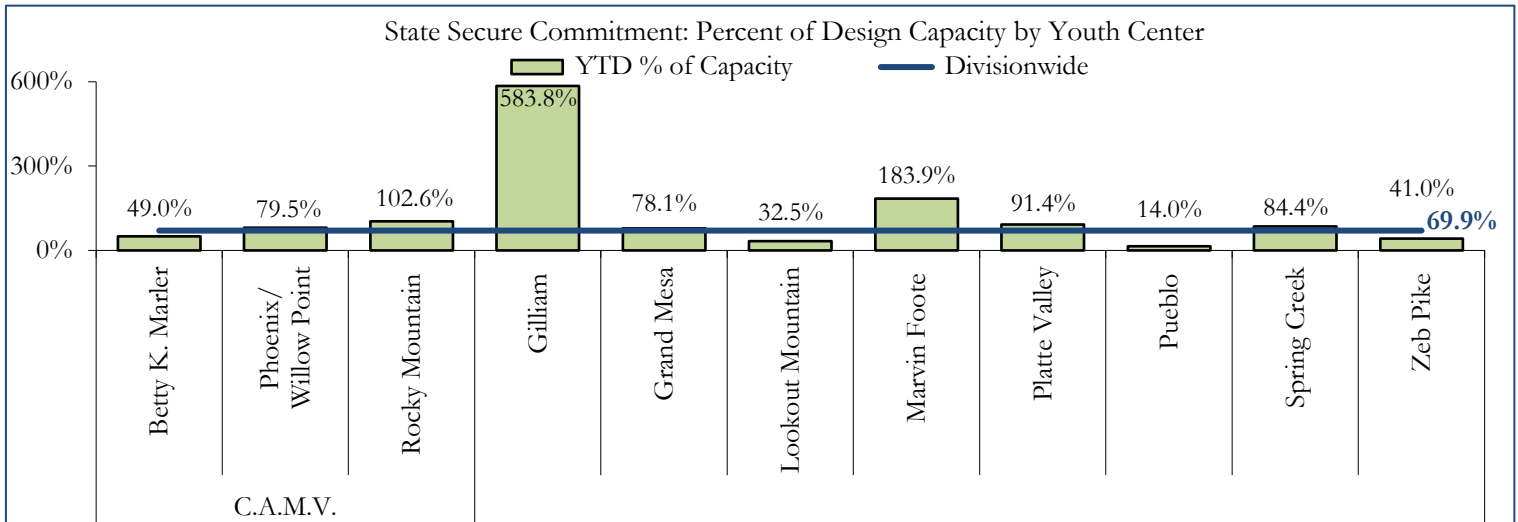
September 2025

DYS Population Report

IV. Commitment Services

A. State Secure ADP by Youth Center

STATE SECURE + ASSESSMENT								
Youth Center	Assessment		ADP Secure		Total		Capacity Design	
	Monthly	YTD	Monthly	YTD	Monthly	YTD	Capacity ¹	% of YTD
Campus at Mount View								
Betty K. Marler	0.0	0.0	13.1	14.7	13.1	14.7	30	49.0%
Phoenix	0.0	0.0	32.1	28.6	32.1	28.6	36	79.5%
Rocky Mountain	0.4	0.5	3.5	1.6	3.8	2.1	2	102.6%
Gilliam	1.4	0.7	12.3	5.2	13.7	5.8	1	583.8%
Grand Mesa	0.2	0.4	24.1	25.4	24.3	25.8	33	78.1%
Lookout Mountain ²	0.0	0.0	0.7	23.4	0.7	23.4	72	32.5%
Marvin Foote	1.0	0.6	6.8	3.1	7.8	3.7	2	183.9%
Platte Valley	2.2	2.9	47.6	44.7	49.8	47.5	52	91.4%
Prairie Vista	0.1	0.6	0.1	0.7	0.2	1.3	-	-
Pueblo	0.0	0.0	0.2	0.1	0.2	0.1	1	14.0%
Spring Creek	0.8	1.8	44.5	40.4	45.2	42.2	50	84.4%
Zebulon Pike	0.0	0.0	0.4	0.4	0.4	0.4	1	41.0%
Assessment Total	6.0	7.4	-	-	6.0	7.4	30	
Secure Total	-	-	185.5	188.3	185.5	188.3	255	
STATE SECURE TOTAL					191.5	195.7	280	69.9%



¹ Youth center bed-capacity design limits reflect allocations for FY 2025-26 as of July 1, 2025.

² Beginning July 1, 2025, Aspire, Golden Peak, and Summit converged to a single Youth Center: Lookout Mountain YSC.

September 2025 DYS Population Report

IV. Commitment Services Continued

B. Contract, Community, & Other Residential ADP by Youth Center

Youth Center/Program	ADP	
	Monthly	YTD
CONTRACT: STAFF SUPERVISED		
Alternative Homes For Youth - Greeley	12.7	11.2
Gateway Residential Program - Delta	3.8	3.6
Third Way Center - Lowry	1.7	2.4
Staff Supervised Subtotal	18.2	17.3
CONTRACT: COMMUNITY RESIDENTIAL		
Ariel Clinical Services	1.3	1.3
Mt Evans Qualifying House	8.8	8.8
Third Way Center, Lincoln	3.1	3.4
Third Way Center, Pontiac	0.3	0.1
Third Way Center, York	1.0	0.4
Community Residential Subtotal	14.5	14.0
(Contract) Staff Supervised + Community Subtotal	32.7	31.2
OTHER RESIDENTIAL		
Hospital	0.04	0.01
Residential Drug/Alcohol Program	0.1	0.6
Residential Mental Health Program	0.2	0.3
Residential Work Program	0.0	0.3
Shelter Care (short term)	1.2	0.7
Other Residential Subtotal	1.6	1.9
<i>Trails Corrections Currently in Progress</i>	<i>0.0</i>	<i>0.0</i>
COMMITTED RESIDENTIAL TOTAL	225.8	228.8

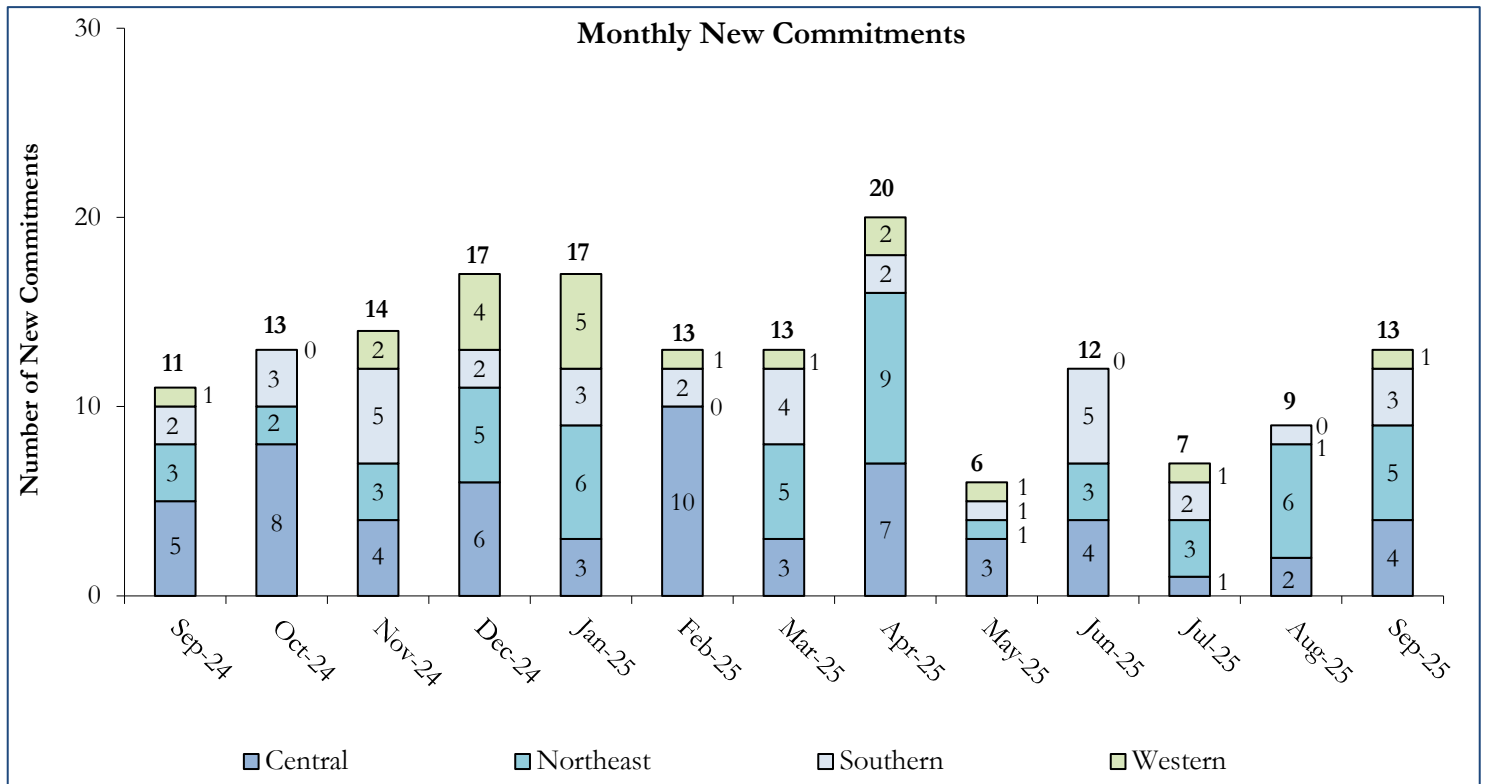
September 2025 DYS Population Report

V. Commitment ADP and New Commitments

A. Commitment ADP and New Commitments

COMMITMENT ADP				
Region	September	% Change from Prior Month	YTD	% Change from Prior FY
Central	84.8	-0.4%	85.3	-19.7%
Northeast	66.6	-3.3%	68.4	-14.0%
Southern	45.1	-1.8%	45.1	-22.2%
Western	29.4	-2.1%	30.1	-9.7%
Commitment ADP	225.8	-1.8%	228.8	-17.4%

NEW COMMITMENTS					
Region	FY 25-26		FY 24-25		% Change from last YTD
	September	YTD	September	YTD	
Central	4	7	5	21	-66.7%
Northeast	5	14	3	16	-12.5%
Southern	3	6	2	13	-53.8%
Western	1	2	1	3	-33.3%
TOTAL	13	29	11	53	-45.3%



September 2025 DYS Population Report

V. Commitment ADP and New Commitments Continued

B. New Commitments by Judicial District

Region	JD ¹	2026 Population Estimates ²	ADP ³		New Commitments		
			September 2025	YTD	September 2025	YTD	YTD Rate ⁴
<i>Central Region</i>							
	1st	51,087	16.0	15.1	0	2	0.4
	2nd	54,544	28.0	27.2	3	4	0.7
	5th	8,824	2.0	2.0	0	0	0.0
	18th	68,920	33.7	35.4	2	2	0.3
	23rd ⁵	51,398	8.4	9.0	0	0	0.0
Central Total		234,773	88.1	88.7	5	8	0.3
<i>Northeast Region</i>							
	8th	34,422	11.4	11.5	1	2	0.6
	13th	8,779	2.0	2.6	0	0	0.0
	17th	69,647	20.3	20.5	0	4	0.6
	19th	44,213	24.5	25.5	3	7	1.6
	20th	27,396	5.0	5.0	0	0	0.0
Northeast Total		184,457	63.2	65.2	4	13	0.7
<i>Southern Region</i>							
	3rd	1,626	0.0	0.0	0	0	0.0
	4th	76,987	31.0	31.1	3	5	0.6
	10th	16,613	12.0	12.3	0	1	0.6
	11th	6,743	0.0	0.0	0	0	0.0
	12th	4,906	1.0	1.0	0	0	0.0
	15th	2,090	1.0	0.7	0	0	0.0
	16th	2,597	1.0	1.0	0	0	0.0
Southern Total		111,562	46.1	46.1	3	6	0.5
<i>Western Region</i>							
	6th	6,555	2.0	1.8	0	1	1.5
	7th	9,637	1.0	1.0	0	0	0.0
	9th	9,121	1.0	1.0	0	0	0.0
	14th	4,898	1.0	1.1	0	0	0.0
	21st	15,129	18.4	18.9	1	1	0.7
	22nd	2,739	5.0	5.0	0	0	0.0
Western Total		48,079	28.4	28.8	1	2	0.4
Statewide Total		578,871	225.8	228.8	13	29	0.5

¹ JD represents the Judicial District in which the client was committed. Regional totals are a sum of their respective Judicial Districts.

² Source: DOLA Estimates.

³ Due to rounding, totals shown may not be an exact sum of the subtotals.

⁴ Per 10,000 youth in the population.

⁵ Comprised of Douglas, Elbert, and Lincoln Counties, the 23rd Judicial District was established on January 14th, 2025, following departure from the 18th Judicial District (Arapahoe).

September 2025 DYS Population Report

VI. Parole Services

PAROLE ADP

Region	Monthly	YTD		% Change from Prior Year
		FY 25-26	FY 24-25	
Central	29.4	35.0	37.8	-7.6%
Northeast	28.0	26.6	26.5	0.7%
Southern	27.2	29.8	12.5	139.0%
Western	10.5	12.1	15.0	-18.9%
Total	95.1	103.6	91.8	12.9%

Region	Parole Intakes		Discharges		LOS
	Monthly	YTD	Monthly	YTD	
Central	0	6	9	23	7.4
Northeast	9	19	8	11	6.0
Southern	3	8	8	17	6.6
Western	1	4	2	10	7.3
Total	13	37	27	61	6.9

Monthly Parole ADP

