

# October 2019 FY 2019-2020 MONTHLY POPULATION REPORT

---

Prepared by the Division of Youth Services (DYS)  
Data Management and Analysis  
November 20th



**COLORADO**  
**Division of Youth Services**  
Office of Children, Youth & Families

# October 2019

## DYS Population Report

<b>I.</b>	<b>Summary Population Data</b>	<b>1</b>
<b>II.</b>	<b>Detention ADP by Youth Center</b>	<b>2</b>
<b>III.</b>	<b>Commitment Services</b>	
	A. State and Contract ADP by Youth Center	3
	B. Community/Other Residential ADP by Youth Center	4
<b>IV.</b>	<b>Commitment ADP and New Commitments by Region</b>	<b>5</b>
<b>VI.</b>	<b>Parole Services</b>	<b>6</b>

# October 2019 DYS Population Report

## I. Summary Population Data

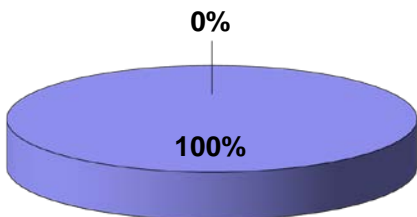
DETAINED YOUTH				
	October 2019		YTD	
	ADP	% change	ADP	LOS
State-Operated	255.5	6.7%	237.0	17.0 days
Contracted Staff Secure	0.0	0.0%	0.0	0.0 days
<b>Total Detained</b>	<b>255.5</b>	<b>6.7%</b>	<b>237.0</b>	<b>17.0 days</b>

COMMITTED YOUTH				
	October 2019		YTD	
	ADP	% change	ADP	LOS
Secure	313.6	-1.5%	321.9	12.8 months
Staff Supervised	124.8	-4.9%	127.5	9.5 months
Community Residential	42.9	6.7%	42.1	5.9 months
Other Residential	8.6	14.4%	9.4	3.1 months
<b>Total Committed Residential</b>	<b>489.9</b>	<b>-1.5%</b>	<b>500.9</b>	<b>20.8 months</b>
<i>Committed Residential w/o Boulder</i>	<i>489.8</i>	<i>-1.5%</i>	<i>500.4</i>	

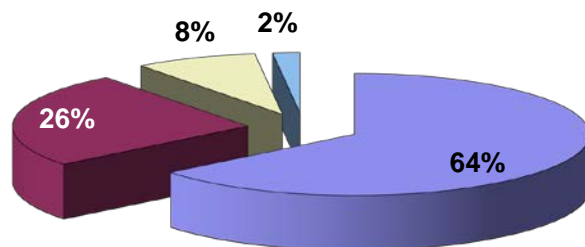
PAROLED YOUTH				
	October 2019		YTD	
	ADP	% change	ADP	LOS
Parole	197.2	-1.2%	202.1	6.9 months

TOTAL STATEWIDE ADP				
	October 2019		YTD	
	ADP	% change	ADP	LOS
<b>DETENTION</b>	255.5	6.7%	237.0	17.0 days
<b>COMMITMENT</b>	489.9	-1.5%	500.9	20.8 months
<b>PAROLE</b>	197.2	-1.2%	202.1	6.9 months
<b>STATE TOTAL</b>	<b>942.6</b>	<b>0.7%</b>	<b>940.0</b>	<i>N/A</i>

**Detention ADP  
Year to Date<sup>1</sup>**



**Commitment ADP  
Year to Date<sup>1</sup>**



■ State-Operated   
 ■ Contracted Staff Secure   
 ■ Secure   
 ■ Staff Supervised   
 ■ Community Residential   
 ■ Other Residential

<sup>1</sup> Due to rounding, totals may not add to 100%.

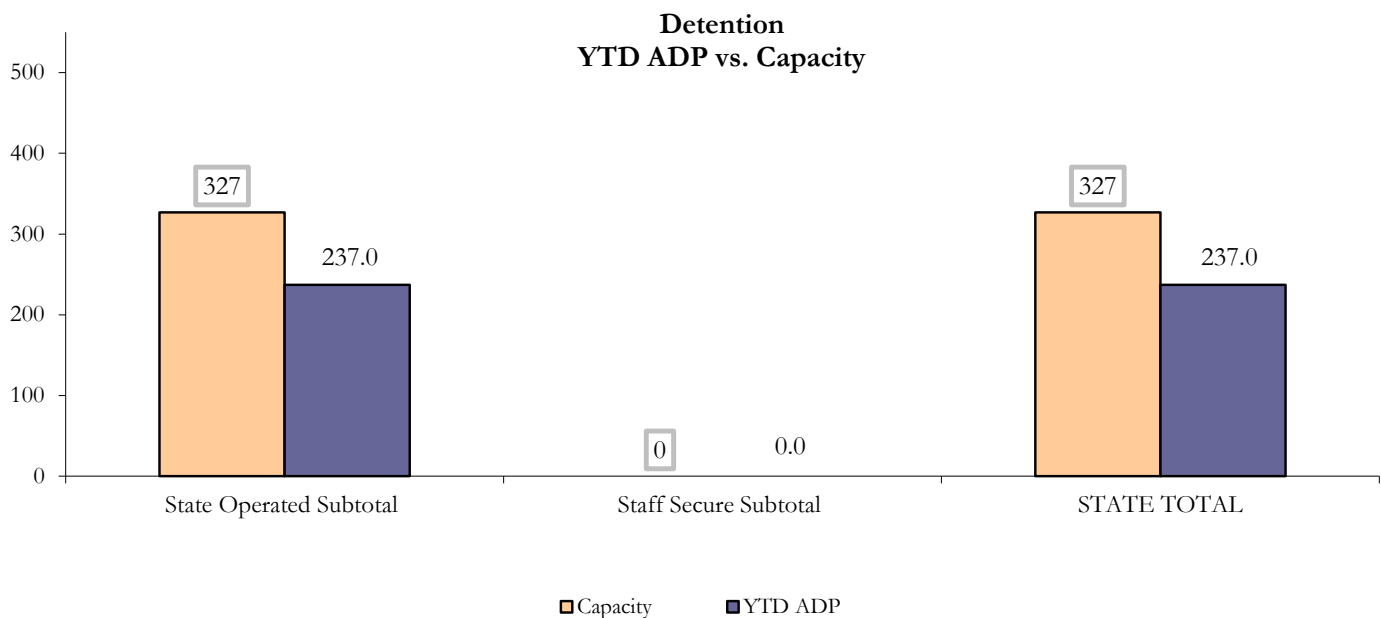
# October 2019 DYS Population Report

## II. Detention ADP by Youth Center

State-Operated Detention							
Youth Center	Operating Capacity	Average Daily Population			New Admissions		LOS (days)
		Monthly	YTD	YTD % of Cap	Monthly	YTD	YTD
Adams	28	25.3	23.6	84.4%	45	146	17.0
Gilliam	49	46.1	40.7	83.0%	67	256	16.0
Grand Mesa	31	13.1	13.9	44.7%	25	118	12.9
Marvin Foote	48	49.9	46.9	97.8%	80	281	18.8
Mount View	39	29.4	21.2	54.4%	34	147	15.8
Platte Valley	45	28.7	31.2	69.3%	68	252	15.8
Pueblo	33	13.9	12.1	36.5%	32	109	11.6
Spring Creek	54	49.0	47.5	87.9%	66	262	21.8
<b>State Subtotal</b>	<b>327</b>	<b>255.5</b>	<b>237.0</b>	<b>72.5%</b>	<b>417</b>	<b>1,571</b>	<b>17.0</b>

Staff Secure Detention							
Youth Center	Operating Capacity	Average Daily Population			New Admissions		LOS (days)
		Monthly	YTD	YTD % of Cap	Monthly	YTD	YTD
<i>Robert DeNier</i> <sup>1</sup>	0	0.0	0.0	N/A	0	0	0.0
<i>Sage Detention</i> <sup>2</sup>	0	0.0	0.0	N/A	0	0	0.0
<b>Staff Secure Subtotal</b>	<b>0</b>	<b>0.0</b>	<b>0.0</b>	<b>N/A</b>	<b>0</b>	<b>0</b>	<b>0.0</b>

STATEWIDE TOTAL							
	Operating Capacity	Average Daily Population			New Admissions		LOS (days)
		Monthly	YTD	YTD % of Cap	Monthly	YTD	YTD
<b>Total Detention</b>	<b>327</b>	<b>255.5</b>	<b>237.0</b>	<b>72.5%</b>	<b>417</b>	<b>1,571</b>	<b>17.0</b>



<sup>1</sup> Effective September 1, 2018, Robert DeNier closed and no longer has detention capacity.

<sup>2</sup> Effective June 14, 2019, Sage Detention closed and no longer has detention capacity.

# October 2019 DYS Population Report

## IV. Commitment Services

### A. State and Contract ADP by Youth Center

STATE SECURE					
Youth Center		ADP		Capacity	
		State Secure		Operational	
		Monthly	YTD	Capacity	% of YTD
	<i>Adams</i> <sup>1</sup>	0.7	1.1	-	-
	<i>Gilliam</i> <sup>1</sup>	2.7	3.1	-	-
	Grand Mesa	50.9	49.6	40	124.0%
	Lookout <sup>2</sup>	63.3	66.8	140	47.7%
	<i>Marvin Foote</i> <sup>1</sup>	5.8	8.0	-	-
	Mount View	78.1	79.9	65	122.9%
	Platte Valley	58.4	58.3	55	106.0%
	<i>Pueblo</i> <sup>1</sup>	0.6	2.2	-	-
	<i>Spring Creek</i> <sup>1</sup>	10.5	10.9	-	-
	Zeb Pike	42.5	42.0	38	110.6%
	<b>Assessment Total</b>	<b>18.2</b>	<b>19.4</b>	-	
	<b>Secure Total</b>	<b>295.3</b>	<b>302.5</b>	-	
	<b>STATE SECURE TOTAL</b>	<b>313.6</b>	<b>321.9</b>	<b>338</b>	<b>95.2%</b>

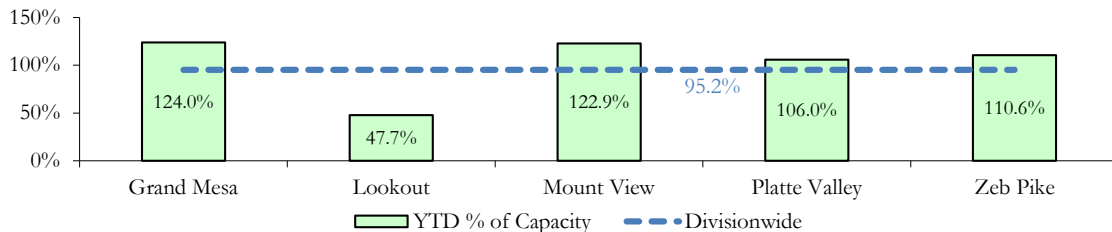
<sup>1</sup> Detention only youth center with commitment ADP due to committed youth being held in detention prior to transfer.

<sup>2</sup> Census reduced at Lookout Mountain YSC.

### CONTRACT: PRIVATE SECURE + STAFF SUPERVISED

Youth Center/Program <sup>3</sup>	ADP	
	Monthly	YTD
(Private Secure) Betty K. Marler Center	0.0	0.0
(Private Secure) Robert DeNier <sup>4</sup>	0.0	0.0
Alternative Homes For Youth - Greeley	16.8	15.3
Desert Lily Academy <sup>5</sup>	0.00	0.003
Gateway Residential Program - Delta	5.4	6.3
Hillcrest Academy <sup>5</sup>	1.0	0.8
Jefferson Hills - Aurora	6.3	15.6
Meadowlark Academy <sup>5</sup>	2.0	2.0
Ridge View	80.4	75.1
Southern Peaks	2.0	1.6
Third Way Center - Lowry	10.8	10.8
<i>Private Secure &amp; Staff Supervised Subtotal</i>	<b>124.8</b>	<b>127.5</b>

**State Secure Commitment  
Percent of Operational Capacity by Youth Center**



<sup>3</sup> Programs with both Secure and Non-Secure placements are aggregated into one category until TRAILS can allow for multi-type program registration.

<sup>4</sup> Effective September 1, 2018, Robert DeNier closed and no longer has commitment capacity.

<sup>5</sup> Out-of-state Program.

# October 2019 DYS Population Report

## IV. Commitment Services Continued

### B. Community/Other Residential ADP by Youth Center<sup>1</sup>

<b>COMMUNITY RESIDENTIAL</b>		
Youth Center/Program	Monthly	YTD
Ariel Clinical Services	0.0	0.4
Dale House Project	3.2	4.1
Denver Area Youth Services (DAYS)	2.5	2.5
Griffith Centers for Children, Inc.	1.0	0.8
Kids Crossing	1.0	1.0
Mesa County Community Corrections	2.0	1.4
Mt Evans Qualifying House	4.4	6.3
Third Way Center, Bannock	2.6	1.9
Third Way Center, Pontiac	7.4	6.5
Third Way Center, York	2.8	2.8
Third Way Center, Lincoln	2.3	2.6
Turning Point Center, Prospect	7.2	5.6
Turning Point Center, Mathews St.	6.5	6.3
Community Subtotal	42.9	42.1
<b>Private Secure + Staff Supervised + Community Subtotal</b>	<b>167.7</b>	<b>169.6</b>
<b>OTHER RESIDENTIAL</b>		
Youth Center/Program	Monthly	YTD
CMHI-Pueblo	0.0	0.8
Hospital	0.0	0.02
Job Corps Parole Program (Federally funded)	1.0	0.9
Residential Drug/Alcohol Program	0.4	0.3
Residential Mental Health Program	2.0	2.7
Shelter Care (short term)	3.0	2.0
Other Residential Subtotal <sup>2</sup>	8.6	9.4
<b>RESIDENTIAL TOTAL</b>	<b>489.9</b>	<b>500.9</b>

<sup>1</sup> Programs with both Secure and Non-Secure placements are aggregated into one category until TRAILS can allow for multi-type program registration.

<sup>2</sup> Due to few youth referred to these types of placements, the subtotal may not be the sum of individual placements; this is typically the result of rounding errors and the ADP calculation method.

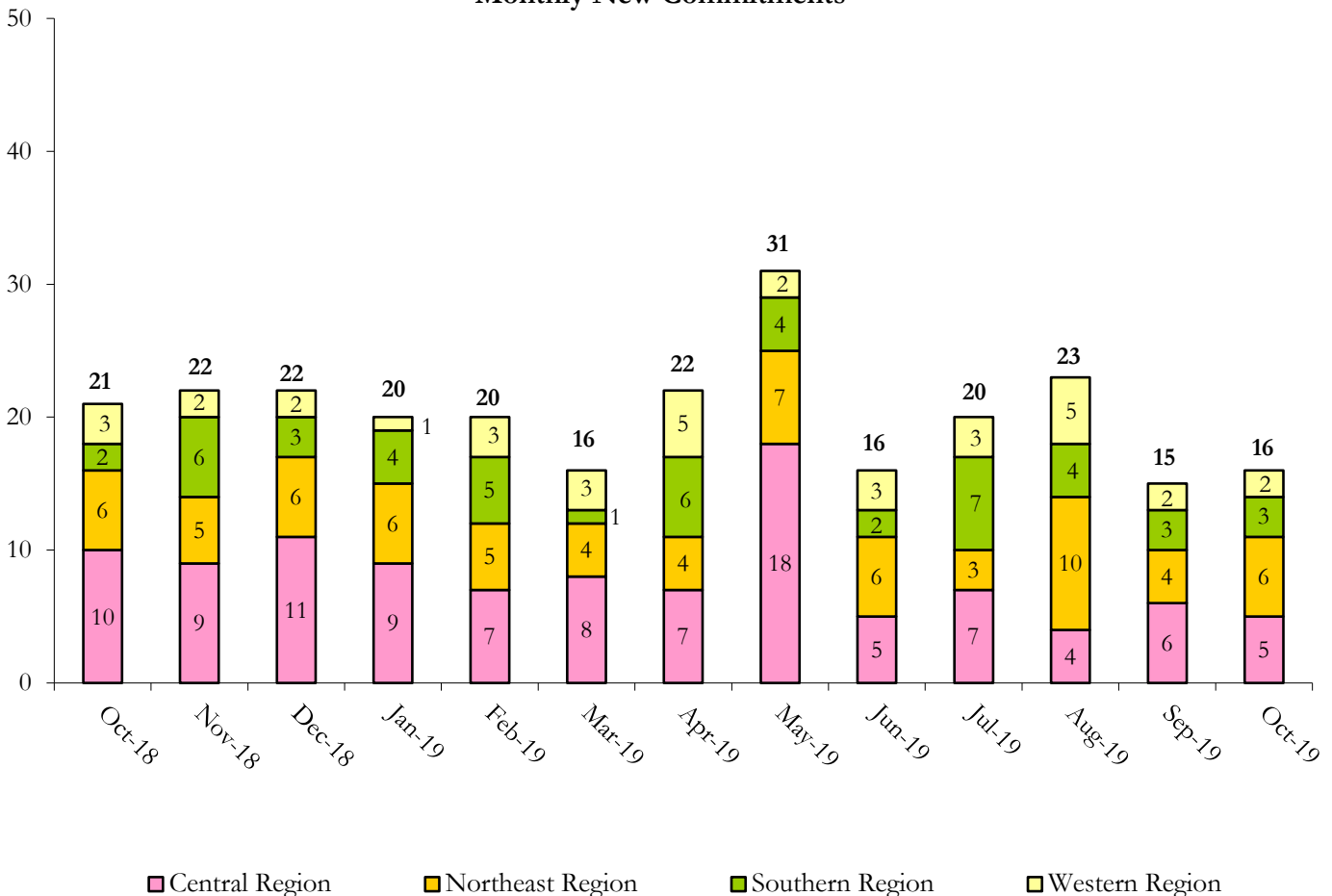
# October 2019 DYS Population Report

## V. Commitment ADP and New Commitments

COMMITMENT ADP				
Region	Monthly		YTD	
	October	% Change	YTD	% Change from Prior FY
Central	217.0	-2.6%	224.3	-17.3%
Northeast	117.5	-2.1%	120.6	-21.2%
Southern	91.9	-2.4%	95.1	-25.4%
Western	63.6	5.4%	60.9	-1.8%
<b>Commitment ADP</b>	<b>489.9</b>	<b>-1.5%</b>	<b>500.9</b>	<b>-18.4%</b>

NEW COMMITMENTS					
	FY 19-20		FY 18-19		% Change from last YTD
	October	YTD	October	YTD	
Central	5	23	10	48	-52.1%
Northeast	6	23	6	15	53.3%
Southern	3	18	2	18	0.0%
Western	2	16	3	16	0.0%
<b>TOTAL</b>	<b>16</b>	<b>80</b>	<b>21</b>	<b>97</b>	<b>-17.5%</b>

**Monthly New Commitments**



# October 2019 DYS Population Report

## V. Parole Services

PAROLE ADP				
Region	Monthly	YTD		% Change from prev YTD
		FY 19-20	FY 18-19	
Central	80.6	80.4	84.3	-4.7%
Northeast	56.6	58.2	58.9	-1.2%
Southern	34.8	39.9	44.3	-10.1%
Western	25.3	23.6	24.6	-4.0%
<b>Total</b>	<b>197.2</b>	<b>202.1</b>	<b>212.2</b>	<b>-4.8%</b>

Region	Parole Intakes		Parole Discharges		
	Monthly	YTD	Monthly	YTD	LOS
Central	14	51	12	57	7.4
Northeast	6	23	7	34	7.0
Southern	4	24	6	33	6.5
Western	1	13	0	8	4.6
<b>Total</b>	<b>25</b>	<b>111</b>	<b>25</b>	<b>132</b>	<b>6.9</b>

**Monthly Parole ADP**

