

August 2019 FY 2019-2020 MONTHLY POPULATION REPORT

Prepared by the Division of Youth Services (DYS)
Data Management and Analysis
September 25th



COLORADO
Division of Youth Services
Office of Children, Youth & Families

August 2019

DYS Population Report

I.	Summary Population Data	1
II.	Detention ADP by Youth Center	2
III.	Commitment Services	
	A. State and Contract ADP by Youth Center	3
	B. Community/Other Residential ADP by Youth Center	4
IV.	Commitment ADP and New Commitments by Region	5
VI.	Parole Services	6

August 2019 DYS Population Report

I. Summary Population Data

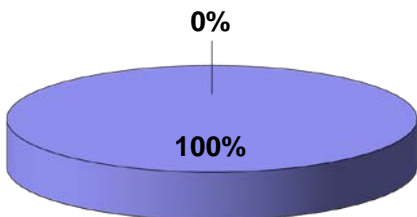
DETAINED YOUTH				
	August 2019		YTD	
	ADP	% change	ADP	LOS
State-Operated	232.5	4.5%	226.7	16.3 days
Contracted Staff Secure	0.0	0.0%	0.0	0.0 days
Total Detained	232.5	4.5%	226.7	16.3 days

COMMITTED YOUTH				
	August 2019		YTD	
	ADP	% change	ADP	LOS
Secure	321.1	-3.7%	327.6	12.6 months
Staff Supervised	129.3	3.8%	127.4	9.6 months
Community Residential	40.7	-7.1%	42.7	5.6 months
Other Residential	9.9	-0.7%	10.5	3.1 months
Total Committed Residential	501.1	-2.1%	508.2	20.5 months
<i>Committed Residential w/o Boulder</i>	<i>501.1</i>	<i>-2.1%</i>	<i>508.2</i>	

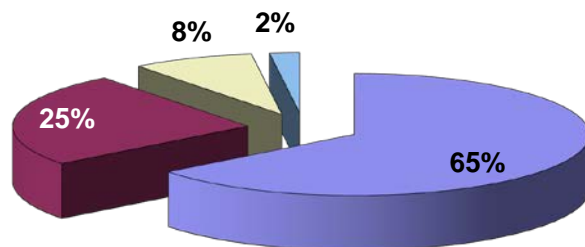
PAROLED YOUTH				
	August 2019		YTD	
	ADP	% change	ADP	LOS
Parole	201.0	-2.4%	201.9	7.4 months

TOTAL STATEWIDE ADP				
	August 2019		YTD	
	ADP	% change	ADP	LOS
DETENTION	232.5	4.5%	226.7	16.3 days
COMMITMENT	501.1	-2.1%	508.2	20.5 months
PAROLE	201.0	-2.4%	201.9	7.4 months
STATE TOTAL	934.5	-0.6%	936.8	N/A

Detention ADP
Year to Date¹



Commitment ADP
Year to Date¹



■ State-Operated
 ■ Contracted Staff Secure
 ■ Secure
 ■ Staff Supervised
 ■ Community Residential
 ■ Other Residential

¹ Due to rounding, totals may not add to 100%.

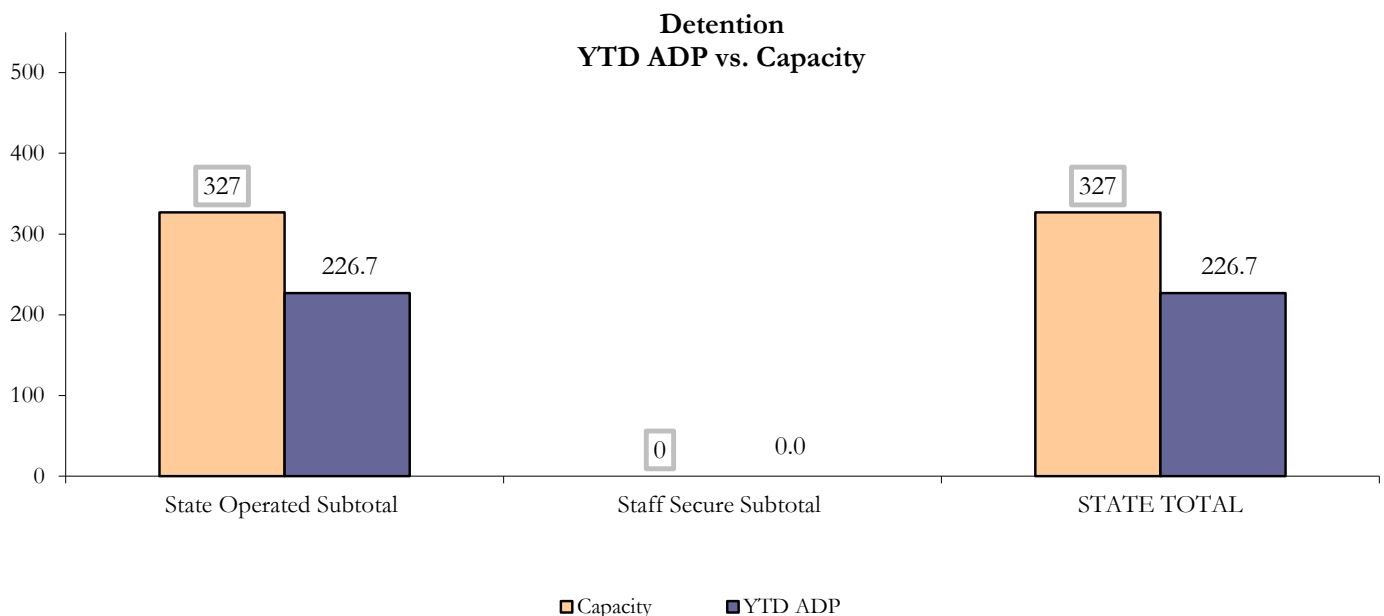
August 2019 DYS Population Report

II. Detention ADP by Youth Center

State-Operated Detention							
Youth Center	Operating Capacity	Average Daily Population			New Admissions		LOS (days)
		Monthly	YTD	YTD % of Cap	Monthly	YTD	YTD
Adams	28	23.6	23.7	84.6%	31	67	12.6
Gilliam	49	40.0	36.7	74.8%	61	124	14.0
Grand Mesa	31	12.3	14.6	47.2%	28	59	16.6
Marvin Foote	48	44.7	45.6	95.0%	75	140	18.9
Mount View	39	17.2	16.4	42.1%	40	71	17.3
Platte Valley	45	33.4	33.3	74.0%	53	125	14.1
Pueblo	33	10.8	11.2	33.9%	19	48	14.3
Spring Creek	54	50.4	45.2	83.7%	64	135	20.2
State Subtotal	327	232.5	226.7	69.3%	371	769	16.3

Staff Secure Detention							
Youth Center	Operating Capacity	Average Daily Population			New Admissions		LOS (days)
		Monthly	YTD	YTD % of Cap	Monthly	YTD	YTD
<i>Robert DeNier</i> ¹	0	0.0	0.0	N/A	0	0	0.0
<i>Sage Detention</i> ²	0	0.0	0.0	N/A	0	0	0.0
Staff Secure Subtotal	0	0.0	0.0	N/A	0	0	0.0

STATEWIDE TOTAL							
	Operating Capacity	Average Daily Population			New Admissions		LOS (days)
		Monthly	YTD	YTD % of Cap	Monthly	YTD	YTD
Total Detention	327	232.5	226.7	69.3%	371	769	16.3



¹ Effective September 1, 2018, Robert DeNier closed and no longer has detention capacity.

² Effective June 14, 2019, Sage Detention closed and no longer has detention capacity.

August 2019 DYS Population Report

IV. Commitment Services

A. State and Contract ADP by Youth Center

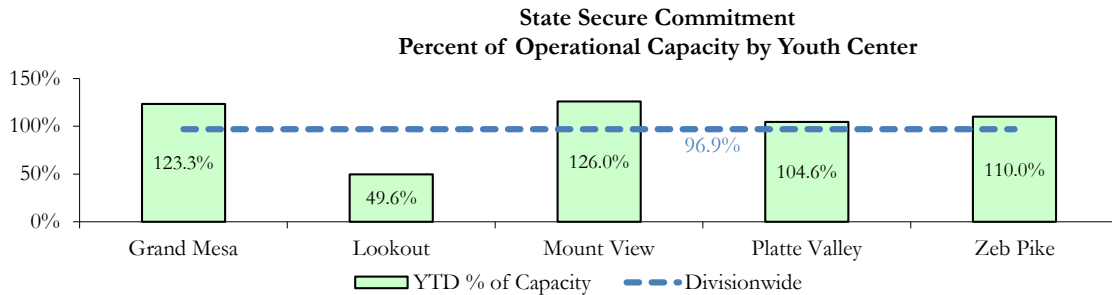
STATE SECURE					
Youth Center		ADP		Capacity	
		State Secure		Operational	
		Monthly	YTD	Capacity	% of YTD
	<i>Adams</i> ¹	1.4	1.4	-	-
	<i>Gilliam</i> ¹	2.7	3.3	-	-
	Grand Mesa	50.4	49.3	40	123.3%
	Lookout ²	67.0	69.4	140	49.6%
	<i>Marvin Foote</i> ¹	9.5	9.1	-	-
	Mount View	76.5	81.9	65	126.0%
	Platte Valley	57.7	57.5	55	104.6%
	<i>Pueblo</i> ¹	2.7	3.0	-	-
	<i>Spring Creek</i> ¹	10.9	10.9	-	-
	Zeb Pike	42.3	41.8	38	110.0%
	Assessment Total	21.8	20.5	-	
	Secure Total	299.4	307.1	-	
	STATE SECURE TOTAL	321.1	327.6	338	96.9%

¹ Detention only youth center with commitment ADP due to committed youth being held in detention prior to transfer.

² Census reduced at Lookout Mountain YSC.

CONTRACT: PRIVATE SECURE + STAFF SUPERVISED

Youth Center/Program ³	ADP	
	Monthly	YTD
(Private Secure) Betty K. Marler Center	0.0	0.0
(Private Secure) Robert DeNier ⁴	0.0	0.0
Alternative Homes For Youth - Greeley	15.1	14.2
Desert Lily Academy ⁵	0.01	0.01
Gateway Residential Program - Delta	7.1	6.9
Hillcrest Academy ⁵	1.0	0.6
Jefferson Hills - Aurora	19.7	21.2
Meadowlark Academy ⁵	2.0	2.0
Ridge View	72.0	70.6
Southern Peaks	2.0	1.3
Third Way Center - Lowry	10.4	10.6
<i>Private Secure & Staff Supervised Subtotal</i>	129.3	127.4



³ Programs with both Secure and Community placements are aggregated into one category until further TRAILS builds can allow for programs to register as multiple types.

⁴ Effective September 1, 2018, Robert DeNier closed and no longer has commitment capacity.

⁵ Out-of-state Program.

August 2019 DYS Population Report

IV. Commitment Services Continued

B. Community/Other Residential ADP by Youth Center¹

COMMUNITY RESIDENTIAL		
Youth Center/Program	Monthly	YTD
Ariel Clinical Services	0.5	0.7
Dale House Project	4.6	5.2
Denver Area Youth Services (DAYS)	2.3	2.1
Griffith Centers for Children, Inc.	1.0	0.5
Kids Crossing	1.0	1.0
Mesa County Community Corrections	1.1	1.1
Mt Evans Qualifying House	6.0	7.5
Third Way Center, Bannock	1.0	1.1
Third Way Center, Pontiac	5.4	6.0
Third Way Center, York	2.5	2.9
Third Way Center, Lincoln	3.2	3.1
Turning Point Center, Prospect	5.5	4.5
Turning Point, Mathews St.	6.6	6.9
Community Subtotal	40.7	42.7
Private Secure + Staff Supervised + Community Subtotal	170.0	170.0
OTHER RESIDENTIAL		
Youth Center/Program	Monthly	YTD
CMHI-Pueblo	1.7	1.9
Hospital	0.0	0.04
Job Corps Parole Program (Federally funded)	1.0	1.0
Residential Drug/Alcohol Program	0.1	0.1
Residential Mental Health Program	3.0	3.2
Shelter Care (short term)	1.0	1.0
Other Residential Subtotal²	9.9	10.5
RESIDENTIAL TOTAL	501.1	508.2

¹ Programs with both Secure and Community placements are aggregated into one category until TRAILS can allow for multi-type program registration.

² Due to few youth referred to these types of placements, the subtotal may not be the sum of individual placements; this is typically the result of rounding errors and the ADP calculation method.

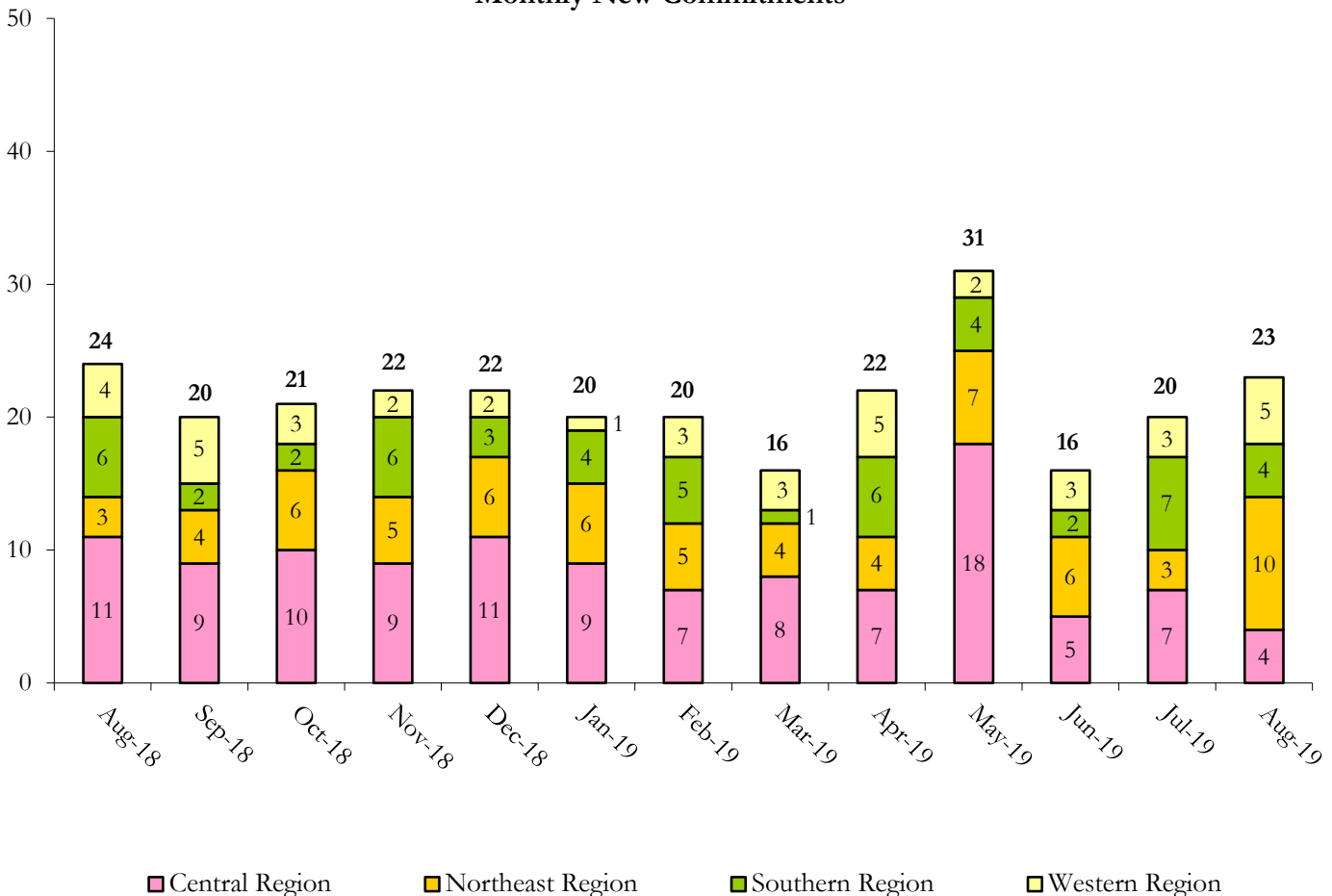
August 2019 DYS Population Report

V. Commitment ADP and New Commitments

COMMITMENT ADP				
Region	Monthly		YTD	
	August	% Change	YTD	% Change from Prior FY
Central	222.9	-4.4%	228.1	-16.9%
Northeast	121.3	-1.0%	122.8	-23.0%
Southern	96.0	-1.4%	97.2	-27.0%
Western	60.8	3.2%	60.1	-3.1%
Commitment ADP	501.1	-2.1%	508.2	-19.2%

NEW COMMITMENTS					
	FY 19-20		FY 18-19		% Change from last YTD
	August	YTD	August	YTD	
Central	4	11	11	28	-60.7%
Northeast	10	13	3	5	160.0%
Southern	4	11	6	12	-8.3%
Western	5	10	4	6	66.7%
TOTAL	23	45	24	51	-11.8%

Monthly New Commitments



August 2019 DYS Population Report

V. Parole Services

PAROLE ADP				
Region	Monthly	YTD		% Change from prev YTD
		FY 19-20	FY 18-19	
Central	77.7	79.6	85.5	-6.9%
Northeast	59.0	59.0	60.2	-2.0%
Southern	42.2	41.7	38.5	8.4%
Western	22.1	21.6	27.0	-19.8%
Total	201.0	201.9	211.1	-4.4%

Region	Parole Intakes		Parole Discharges		
	Monthly	YTD	Monthly	YTD	LOS
Central	14	30	14	37	7.6
Northeast	5	12	9	18	8.2
Southern	5	14	8	17	7.0
Western	3	7	2	4	4.5
Total	27	63	33	76	7.4

Monthly Parole ADP

