

# June 2018 FY 2017-2018 MONTHLY POPULATION REPORT

---

Prepared by the Division of Youth Services (DYS)  
Data Management and Analysis  
July 23rd



**COLORADO**

**Office of Children,  
Youth & Families**

Division of Youth Services

# June 2018

## DYS Population Report

<b>I. Summary Population Data</b>	<b>1</b>
<b>II. Detention ADP by Facility</b>	<b>2</b>
<b>III. Commitment Services</b>	
A. State and Contract ADP by Facility	<b>3</b>
B. Community/Other Residential ADP by Facility	<b>4</b>
<b>IV. Commitment ADP and New Commitments by Region</b>	<b>5</b>
<b>V. Parole Services</b>	<b>6</b>

# June 2018 DYS Population Report

## I. Summary Population Data

### DETAINED YOUTH

	June 2018		YTD	
	ADP	% change	ADP	LOS
State-Operated	255.1	-2.3%	256.0	16.5 days
Contracted Staff Secure	4.7	13.1%	6.8	23.8 days
<b>Total Detained</b>	<b>259.9</b>	<b>-2.0%</b>	<b>262.8</b>	<b>16.6 days</b>

### COMMITTED YOUTH

	June 2018		YTD	
	ADP	% change	ADP	LOS
Secure	401.2	0.9%	394.2	11.0 months
Staff Supervised	186.9	-0.1%	187.8	9.8 months
Community Residential	58.6	6.2%	59.9	5.0 months
Other Residential	6.5	-21.4%	4.9	1.5 months
<b>Total Committed Residential</b>	<b>653.3</b>	<b>0.8%</b>	<b>646.8</b>	<b>20.0 months</b>
<i>Committed Residential w/o Boulder</i>	<i>650.5</i>	<i>1.0%</i>	<i>644.6</i>	<i>-</i>

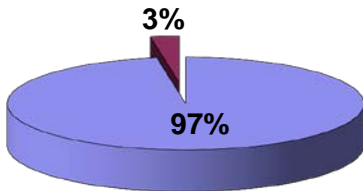
### PAROLE YOUTH

	June 2018		YTD	
	ADP	% change	ADP	LOS
Parole	209.3	1.0%	210.1	6.7 months

### TOTAL STATEWIDE ADP

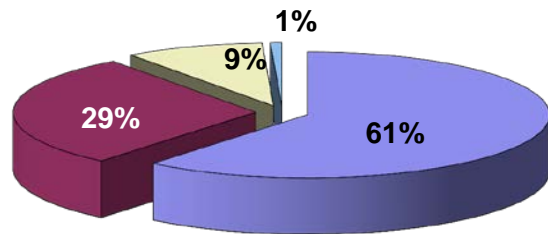
	June 2018		YTD	
	ADP	% change	ADP	LOS
<b>DETENTION</b>	<b>259.9</b>	<b>-2.0%</b>	<b>262.8</b>	<b>16.6 days</b>
<b>COMMITMENT</b>	<b>653.3</b>	<b>0.8%</b>	<b>646.8</b>	<b>20.0 months</b>
<b>PAROLE</b>	<b>209.3</b>	<b>1.0%</b>	<b>210.1</b>	<b>6.7 months</b>
<b>STATE TOTAL</b>	<b>1,122.4</b>	<b>0.2%</b>	<b>1,119.7</b>	<b>N/A</b>

**Detention ADP  
Year to Date<sup>1</sup>**



■ State-Operated ■ Contracted Staff Secure

**Commitment ADP  
Year to Date<sup>1</sup>**



■ Secure ■ Staff Supervised ■ Community Residential ■ Other Residential

<sup>1</sup> Due to rounding, totals may not add to 100%.

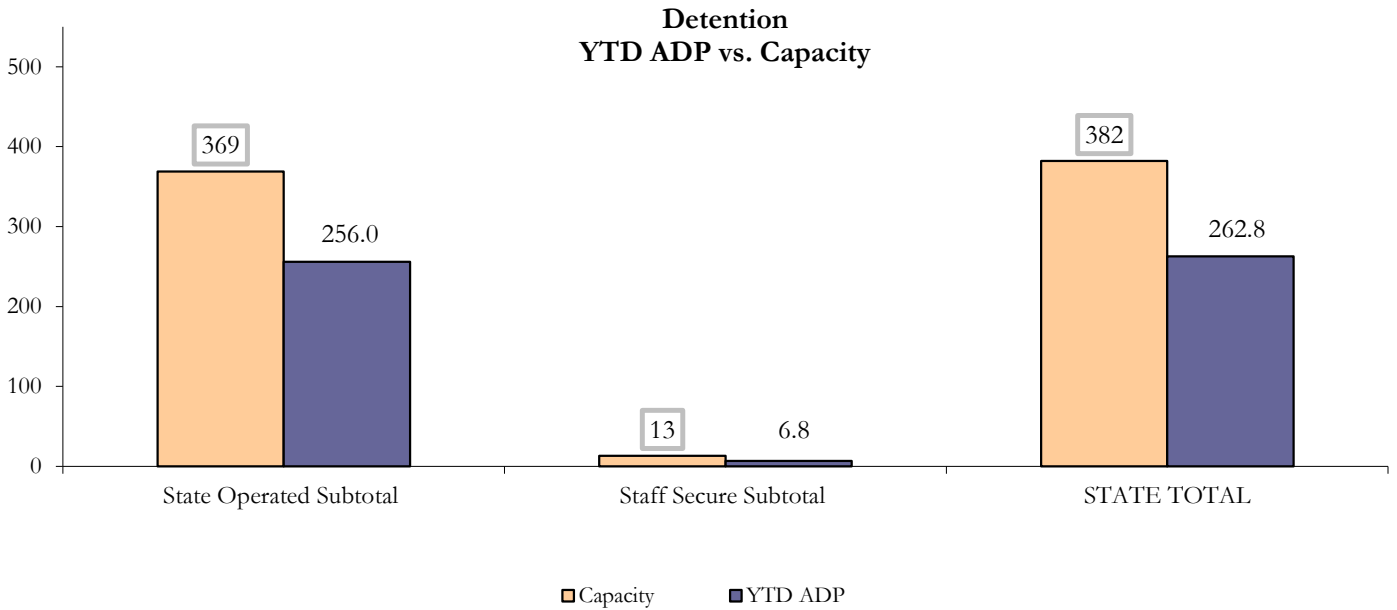
# June 2018 DYS Population Report

## II. Detention ADP by Facility

State Operated Detention							
Facility	Operating Capacity	Average Daily Population			New Admissions		LOS (days)
		Monthly	YTD	YTD % of Cap	Monthly	YTD	YTD
Adams	30	21.6	22.6	75.2%	38	518	15.5
Gilliam	64	38.0	41.6	65.0%	64	832	17.9
Grand Mesa	30	21.3	20.7	69.0%	22	389	17.7
Marvin Foote	62	36.5	39.9	64.3%	84	1,024	13.7
Mount View	41	31.1	30.4	74.1%	51	668	16.5
Platte Valley	64	45.8	37.4	58.5%	100	921	14.5
Pueblo	27	14.0	16.9	62.4%	25	406	14.5
Spring Creek	51	46.8	46.6	91.4%	64	727	22.4
<b>State Subtotal</b>	<b>369</b>	<b>255.1</b>	<b>256.0</b>	<b>69.4%</b>	<b>448</b>	<b>5,485</b>	<b>16.5</b>

Staff Secure Detention							
Facility	Operating Capacity	Average Daily Population			New Admissions		LOS (days)
		Monthly	YTD	YTD % of Cap	Monthly	YTD	YTD
Robert DeNier	9	2.6	4.9	54.4%	6	67	26.9
Sage Detention	4	2.2	1.9	47.7%	4	39	17.8
<b>Staff Secure Subtotal</b>	<b>13</b>	<b>4.7</b>	<b>6.8</b>	<b>52.3%</b>	<b>10</b>	<b>106</b>	<b>23.8</b>

STATEWIDE TOTAL							
	Operating Capacity	Average Daily Population			New Admissions		LOS (days)
		Monthly	YTD	YTD % of Cap	Monthly	YTD	YTD
<b>Total Detention</b>	<b>382</b>	<b>259.9</b>	<b>262.8</b>	<b>68.8%</b>	<b>458</b>	<b>5,591</b>	<b>16.6</b>



# June 2018 DYS Population Report

## III. Commitment Services A. State and Contract ADP by Facility

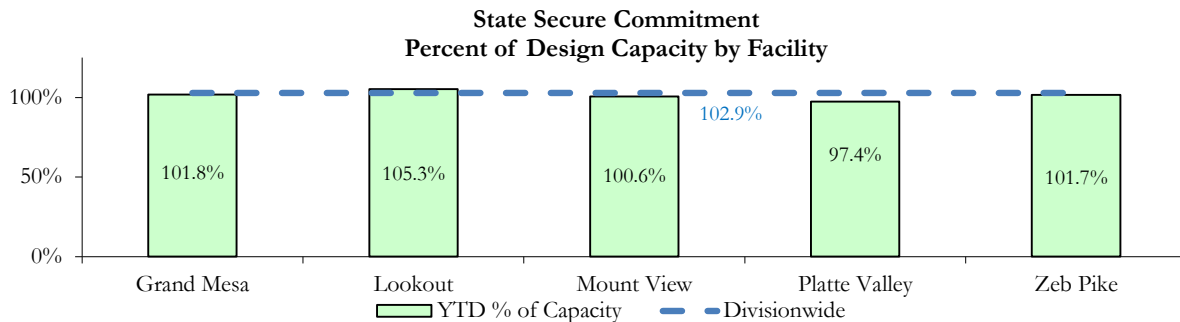
STATE SECURE				
Facility	ADP		Capacity	
	State Secure		Design	
	Monthly	YTD	Capacity	% of YTD
<i>Adams</i> <sup>1</sup>	1.6	0.4	-	-
<i>Gilliam</i> <sup>1</sup>	0.1	0.4	-	-
Grand Mesa	42.0	40.7	40	101.8%
Lookout	147.1	147.4	140	105.3%
<i>Marvin Foote</i> <sup>1</sup>	0.2	0.7	-	-
Mount View	65.4	65.4	65	100.6%
Platte Valley	53.7	53.6	55	97.4%
<i>Pueblo</i> <sup>1</sup>	0.0	0.1	-	-
<i>Spring Creek</i> <sup>2</sup>	0.1	0.4	-	-
Zeb Pike	38.6	38.6	38	101.7%
<b>Assessment Total</b>	<b>36.4</b>	<b>29.5</b>	-	
<b>Secure Total</b>	<b>312.5</b>	<b>318.1</b>	-	
<b>STATE SECURE TOTAL</b>	<b>348.9</b>	<b>347.6</b>	<b>338</b>	<b>102.9%</b>

<sup>1</sup> Detention only facilities with commitment ADP due to committed youth being held in detention prior to transfer.

<sup>2</sup> Spring Creek was designated a detention only facility effective November 1, 2016 and no longer has commitment capacity allocation.

## CONTRACT: PRIVATE SECURE + STAFF SUPERVISED

Facility/Program <sup>3</sup>	ADP	
	Monthly	YTD
(Private Secure) Betty K. Marler Center	38.3	39.6
(Private Secure) Robert DeNier	14.1	6.9
Alternative Homes For Youth - Greeley	15.2	16.9
Gateway Residential Program - Delta	3.0	2.8
Hilltop (Residential Youth Services)	3.3	3.3
Jefferson Hills - Aurora	26.3	31.6
Ridge View	126.8	121.9
Southern Peaks	2.0	4.3
Third Way Center - Lowry	10.3	7.2
<i>Private Secure &amp; Staff Supervised Subtotal</i>	<b>239.3</b>	<b>234.4</b>



<sup>3</sup> Programs with both Secure and Community placements are aggregated into one category until further TRAILS builds can allow for programs to register as multiple types.

# June 2018 DYS Population Report

## III. Commitment Services Continued

### B. Community/Other Residential ADP by Facility<sup>1</sup>

<b>COMMUNITY RESIDENTIAL</b>		
	<i>Monthly</i>	<i>YTD</i>
Ariel Clinical Services	0.5	0.9
Community Corrections: Southwest Colorado	0.0	0.1
Dale House Project	11.1	8.5
Denver Area Youth Services (DAYS)	2.6	1.6
Gateway Residential Program - Grand Junction	3.8	2.5
Griffith Centers for Children, Inc.	5.0	5.2
Job Corps	3.0	3.6
Kids Crossing	1.0	1.2
Mesa County Community Corrections	0.1	0.8
Mt Evans Qualifying House	12.5	10.3
Sage Residential	0.9	0.2
Savio House	0.0	0.3
Synergy Administration	1.6	2.7
Third Way Center, Bannock	0.0	1.2
Third Way Center, Pontiac	2.3	5.2
Third Way Center, York	3.0	2.0
Third Way Center, Lincoln	1.8	3.2
Turning Point Center, Prospect	3.8	4.5
Turning Point, Mathews St.	4.4	5.6
Whimspire Child Placement	1.0	0.4
<i>Community Subtotal</i>	<i>58.6</i>	<i>59.9</i>
<i>Private Secure + Staff Supervised + Community Subtotal</i>	<i>297.9</i>	<i>294.3</i>
<b>OTHER RESIDENTIAL</b>		
	<i>Monthly</i>	<i>YTD</i>
CMHI-Ft. Logan	0.0	0.1
CMHI-Pueblo	1.0	0.5
Job Corps Parole Program (Federally funded)	0.0	1.9
Other Mental Health Facility	0.0	0.01
Residential Drug/Alcohol Program	0.0	0.3
Residential Mental Health Program	2.5	1.7
Residential Work Program	0.6	0.0
Shelter Care (short term)	0.5	0.3
<i>Other Residential Subtotal<sup>2</sup></i>	<i>6.5</i>	<i>4.9</i>
<b>RESIDENTIAL TOTAL</b>		
	<b>653.3</b>	<b>646.8</b>

<sup>1</sup> Programs with both Secure and Community placements are aggregated into one category until further TRAILS builds can allow for programs to register as multiple types.

<sup>2</sup> Due to relatively few youth referred to these types of placements, the Other Residential Subtotals may not be the sum of individual placements; this is typically the result of rounding errors and the method by which ADP is calculated.

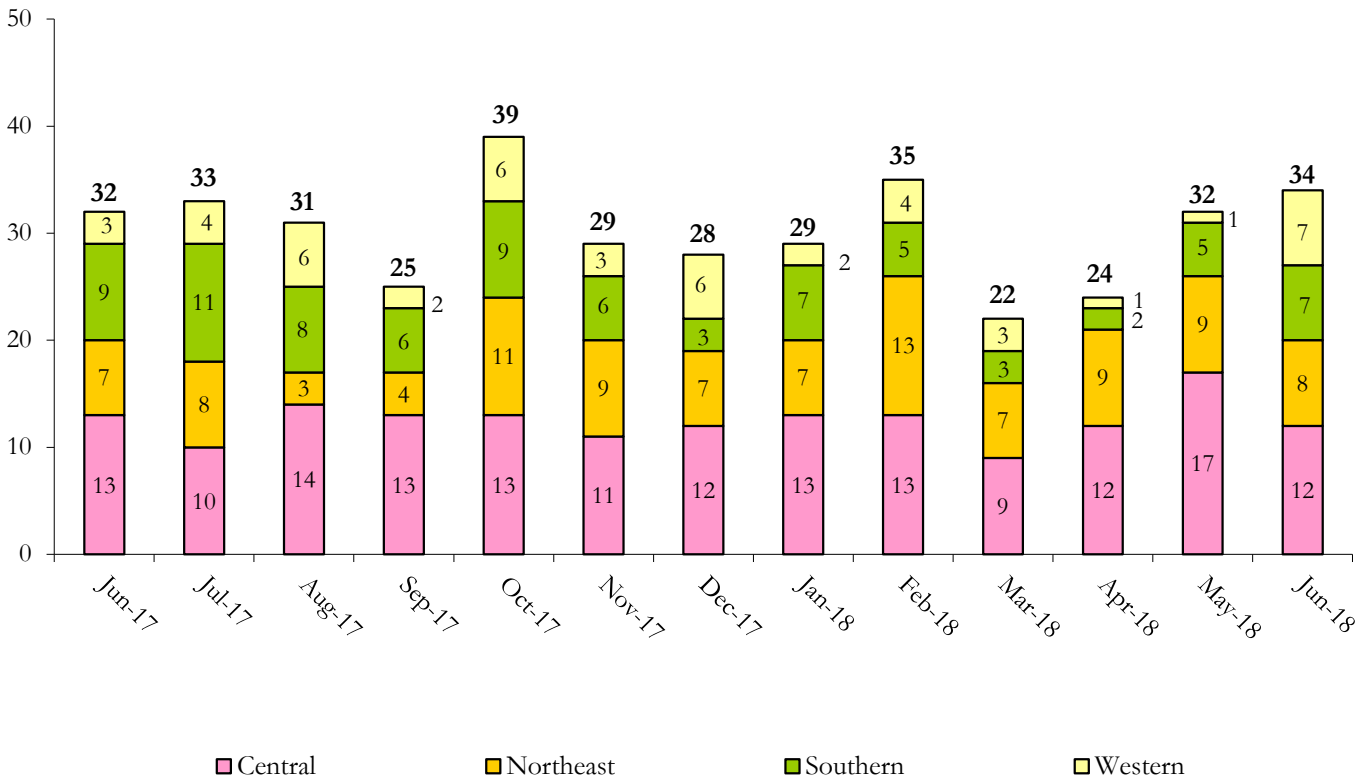
# June 2018 DYS Population Report

## IV. Commitment ADP and New Commitments

COMMITMENT ADP				
Region	Monthly		YTD	
	June	% Change	June	% Change from Prior FY
Central Region	277.1	1.6%	263.4	1.2%
Northeast Region	174.6	-1.2%	177.7	-6.2%
Southern Region	138.2	1.6%	141.8	3.7%
Western Region	63.5	1.4%	63.9	-1.2%
<b>Commitment ADP</b>	<b>653.3</b>	<b>0.8%</b>	<b>646.8</b>	<b>-0.6%</b>

NEW COMMITMENTS					
	FY 17-18		FY 16-17		% Change from last YTD
	June	YTD	June	YTD	
Central Region	12	166	13	124	33.9%
Northeast Region	8	102	7	135	-24.4%
Southern Region	7	81	9	81	0.0%
Western Region	7	47	3	40	17.5%
<b>TOTAL</b>	<b>34</b>	<b>396</b>	<b>32</b>	<b>380</b>	<b>4.2%</b>

### Monthly New Commitments



# June 2018 DYS Population Report

## V. Parole Services

PAROLE ADP				
Region	Monthly	YTD		% Change from prev YTD
		FY 17-18	FY 16-17	
Central Region	79.5	75.1	86.5	-13.2%
Northeast Region	62.1	65.4	68.8	-4.9%
Southern Region	39.5	41.9	44.8	-6.6%
Western Region	28.1	27.7	20.2	37.2%
<b>Total</b>	<b>209.3</b>	<b>210.1</b>	<b>220.4</b>	<b>-4.7%</b>

Region	Parole Intakes		Parole Discharges		
	Monthly	YTD	Monthly	YTD	LOS
Central Region	12	130	9	123	6.5
Northeast Region	12	112	7	116	6.8
Southern Region	5	67	11	85	6.8
Western Region	2	47	4	41	7.0
<b>Total</b>	<b>31</b>	<b>356</b>	<b>31</b>	<b>365</b>	<b>6.7</b>

### Monthly Parole ADP

