

# May 2018 FY 2017-2018 MONTHLY POPULATION REPORT

---

Prepared by the Division of Youth Services (DYS)  
Data Management and Analysis  
June 27th



**COLORADO**

**Office of Children,  
Youth & Families**

Division of Youth Services

# May 2018

## DYS Population Report

<b>I. Summary Population Data</b>	<b>1</b>
<b>II. Detention ADP by Facility</b>	<b>2</b>
<b>III. Commitment Services</b>	
A. State and Contract ADP by Facility	<b>3</b>
B. Community/Other Residential ADP by Facility	<b>4</b>
<b>IV. Commitment ADP and New Commitments by Region</b>	<b>5</b>
<b>V. Parole Services</b>	<b>6</b>

# May 2018 DYS Population Report

## I. Summary Population Data

### DETAINED YOUTH

	May 2018		YTD	
	ADP	% change	ADP	LOS
State-Operated	261.1	3.6%	255.8	16.3 days
Contracted Staff Secure	4.2	-19.1%	7.0	24.8 days
<b>Total Detained</b>	<b>265.3</b>	<b>3.1%</b>	<b>262.8</b>	<b>16.4 days</b>

### COMMITTED YOUTH

	May 2018		YTD	
	ADP	% change	ADP	LOS
Secure	397.6	2.6%	394.0	11.0 months
Staff Supervised	187.0	-1.7%	187.9	9.8 months
Community Residential	55.2	-7.5%	59.9	4.9 months
Other Residential	8.3	53.6%	5.6	1.5 months
<b>Total Committed Residential</b>	<b>648.1</b>	<b>0.8%</b>	<b>647.5</b>	<b>20.1 months</b>
<i>Committed Residential w/o Boulder</i>	<i>644.1</i>	<i>0.8%</i>	<i>645.3</i>	<i>-</i>

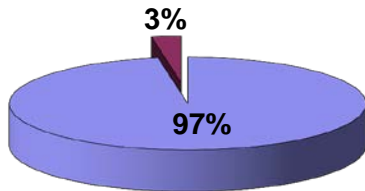
### PAROLE YOUTH

	May 2018		YTD	
	ADP	% change	ADP	LOS
Parole	207.3	-3.4%	209.7	6.5 months

### TOTAL STATEWIDE ADP

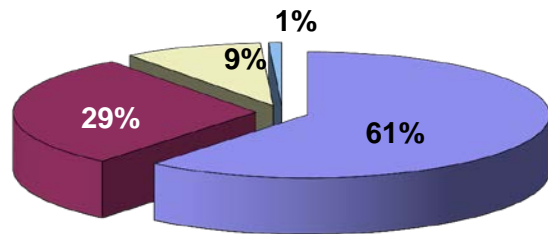
	May 2018		YTD	
	ADP	% change	ADP	LOS
DETENTION	265.3	3.1%	262.8	16.4 days
COMMITMENT	648.1	0.8%	647.5	20.1 months
PAROLE	207.3	-3.4%	209.7	6.5 months
<b>STATE TOTAL</b>	<b>1,120.6</b>	<b>0.5%</b>	<b>1,120.0</b>	<b>N/A</b>

**Detention ADP  
Year to Date<sup>1</sup>**



■ State-Operated ■ Contracted Staff Secure

**Commitment ADP  
Year to Date<sup>1</sup>**



■ Secure ■ Staff Supervised ■ Community Residential ■ Other Residential

<sup>1</sup> Due to rounding, totals may not add to 100%.

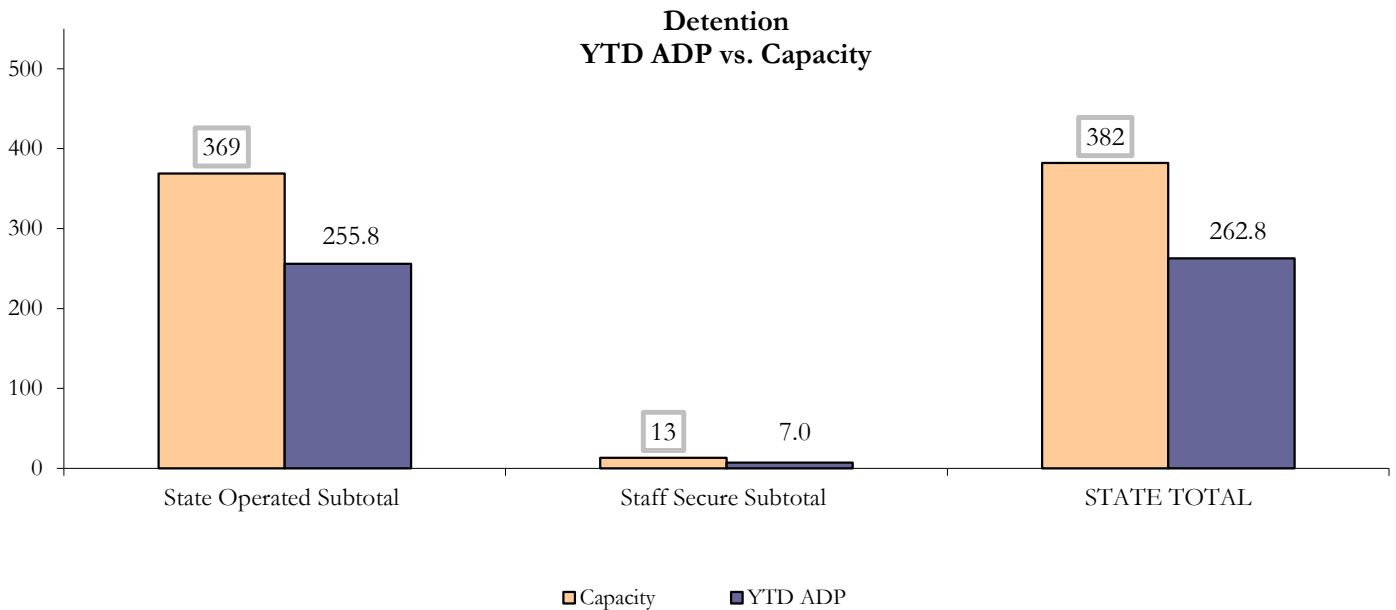
# May 2018 DYS Population Report

## II. Detention ADP by Facility

State Operated Detention							
Facility	Operating Capacity	Average Daily Population			New Admissions		LOS (days)
		Monthly	YTD	YTD % of Cap	Monthly	YTD	YTD
Adams	30	23.2	22.7	75.7%	44	481	15.4
Gilliam	64	45.1	41.9	65.5%	65	768	17.0
Grand Mesa	30	22.8	20.6	68.8%	36	367	17.7
Marvin Foote	62	34.4	40.2	64.8%	81	940	13.4
Mount View	41	32.7	30.3	74.0%	54	617	16.4
Platte Valley	64	37.7	36.3	56.8%	84	821	14.5
Pueblo	27	16.3	17.1	63.4%	39	381	14.5
Spring Creek	51	48.9	46.6	91.4%	62	663	22.5
<b>State Subtotal</b>	<b>369</b>	<b>261.1</b>	<b>255.8</b>	<b>69.3%</b>	<b>465</b>	<b>5,038</b>	<b>16.3</b>

Staff Secure Detention							
Facility	Operating Capacity	Average Daily Population			New Admissions		LOS (days)
		Monthly	YTD	YTD % of Cap	Monthly	YTD	YTD
Robert DeNier	9	1.8	5.1	56.7%	2	61	28.7
Sage Detention	4	2.4	1.9	47.1%	4	35	17.4
<b>Staff Secure Subtotal</b>	<b>13</b>	<b>4.2</b>	<b>7.0</b>	<b>53.7%</b>	<b>6</b>	<b>96</b>	<b>24.8</b>

STATEWIDE TOTAL							
	Operating Capacity	Average Daily Population			New Admissions		LOS (days)
		Monthly	YTD	YTD % of Cap	Monthly	YTD	YTD
<b>Total Detention</b>	<b>382</b>	<b>265.3</b>	<b>262.8</b>	<b>68.8%</b>	<b>471</b>	<b>5,134</b>	<b>16.4</b>



# May 2018 DYS Population Report

## III. Commitment Services A. State and Contract ADP by Facility

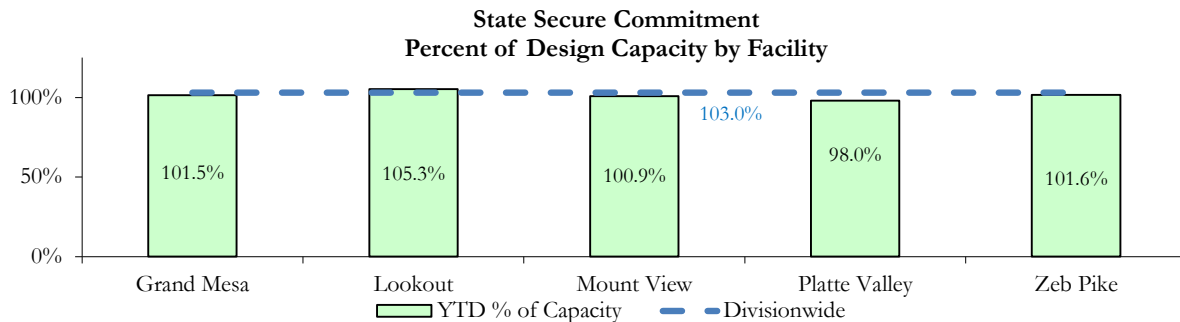
STATE SECURE				
Facility	ADP		Capacity	
	State Secure		Design	
	Monthly	YTD	Capacity	% of YTD
<i>Adams</i> <sup>1</sup>	0.3	0.3	-	-
<i>Gilliam</i> <sup>1</sup>	0.0	0.4	-	-
Grand Mesa	40.8	40.6	40	101.5%
Lookout	147.6	147.4	140	105.3%
<i>Marvin Foote</i> <sup>1</sup>	0.1	0.7	-	-
Mount View	63.2	65.6	65	100.9%
Platte Valley	54.9	53.9	55	98.0%
<i>Pueblo</i> <sup>1</sup>	0.2	0.1	-	-
<i>Spring Creek</i> <sup>2</sup>	0.2	0.4	-	-
Zeb Pike	38.8	38.6	38	101.6%
<b>Assessment Total</b>	<b>36.2</b>	<b>29.7</b>	-	
<b>Secure Total</b>	<b>309.8</b>	<b>318.3</b>	-	
<b>STATE SECURE TOTAL</b>	<b>346.0</b>	<b>348.0</b>	<b>338</b>	<b>103.0%</b>

<sup>1</sup> Detention only facilities with commitment ADP due to committed youth being held in detention prior to transfer.

<sup>2</sup> Spring Creek was designated a detention only facility effective November 1, 2016 and no longer has commitment capacity allocation.

## CONTRACT: PRIVATE SECURE + STAFF SUPERVISED

Facility/Program <sup>3</sup>	ADP	
	Monthly	YTD
(Private Secure) Betty K. Marler Center	40.8	39.8
(Private Secure) Robert DeNier	10.8	6.2
Alternative Homes For Youth - Greeley	16.3	17.0
Gateway Residential Program - Delta	3.0	2.8
Hilltop (Residential Youth Services)	3.2	3.3
Jefferson Hills - Aurora	26.9	32.0
Ridge View	126.8	121.5
Southern Peaks	1.7	4.5
Third Way Center - Lowry	9.1	6.9
<i>Private Secure &amp; Staff Supervised Subtotal</i>	<b>238.6</b>	<b>233.9</b>



<sup>3</sup> Programs with both Secure and Community placements are aggregated into one category until further TRAILS builds can allow for programs to register as multiple types.

# May 2018 DYS Population Report

## III. Commitment Services Continued

### B. Community/Other Residential ADP by Facility<sup>1</sup>

<b>COMMUNITY RESIDENTIAL</b>		
	<i>Monthly</i>	<i>YTD</i>
Ariel Clinical Services	0.6	1.0
Community Corrections: Southwest Colorado	0.0	0.1
Dale House Project	10.6	8.3
Denver Area Youth Services (DAYS)	2.0	1.5
Gateway Residential Program - Grand Junction	3.7	2.4
Griffith Centers for Children, Inc.	5.7	5.3
Job Corps	2.1	3.7
Kids Crossing	0.5	1.1
Mesa County Community Corrections	0.0	0.8
Mt Evans Qualifying House	12.1	10.1
Sage Residential	0.7	0.1
Savio House	0.0	0.3
Synergy Administration	1.7	2.8
Third Way Center, Bannock	0.0	1.3
Third Way Center, Pontiac	2.5	5.4
Third Way Center, York	1.6	1.9
Third Way Center, Lincoln	2.9	3.3
Turning Point Center, Prospect	3.0	4.5
Turning Point, Mathews St.	4.5	5.7
Whimspire Child Placement	1.0	0.4
<i>Community Subtotal</i>	<i>55.2</i>	<i>59.9</i>
<i>Private Secure + Staff Supervised + Community Subtotal</i>	<i>293.7</i>	<i>293.9</i>
<b>OTHER RESIDENTIAL</b>		
	<i>Monthly</i>	<i>YTD</i>
CMHI-Ft. Logan	0.0	0.1
CMHI-Pueblo	0.2	0.5
Job Corps Parole Program (Federally funded)	2.4	2.0
Other Mental Health Facility	0.0	0.02
Residential Drug/Alcohol Program	0.0	0.3
Residential Mental Health Program	3.0	1.7
Shelter Care (short term)	0.2	0.3
<i>Other Residential Subtotal<sup>2</sup></i>	<i>8.3</i>	<i>5.6</i>
<b>RESIDENTIAL TOTAL</b>		
	<b>648.1</b>	<b>647.5</b>

<sup>1</sup> Programs with both Secure and Community placements are aggregated into one category until further TRAILS builds can allow for programs to register as multiple types.

<sup>2</sup> Due to relatively few youth referred to these types of placements, the Other Residential Subtotals may not be the sum of individual placements; this is typically the result of rounding errors and the method by which ADP is calculated.

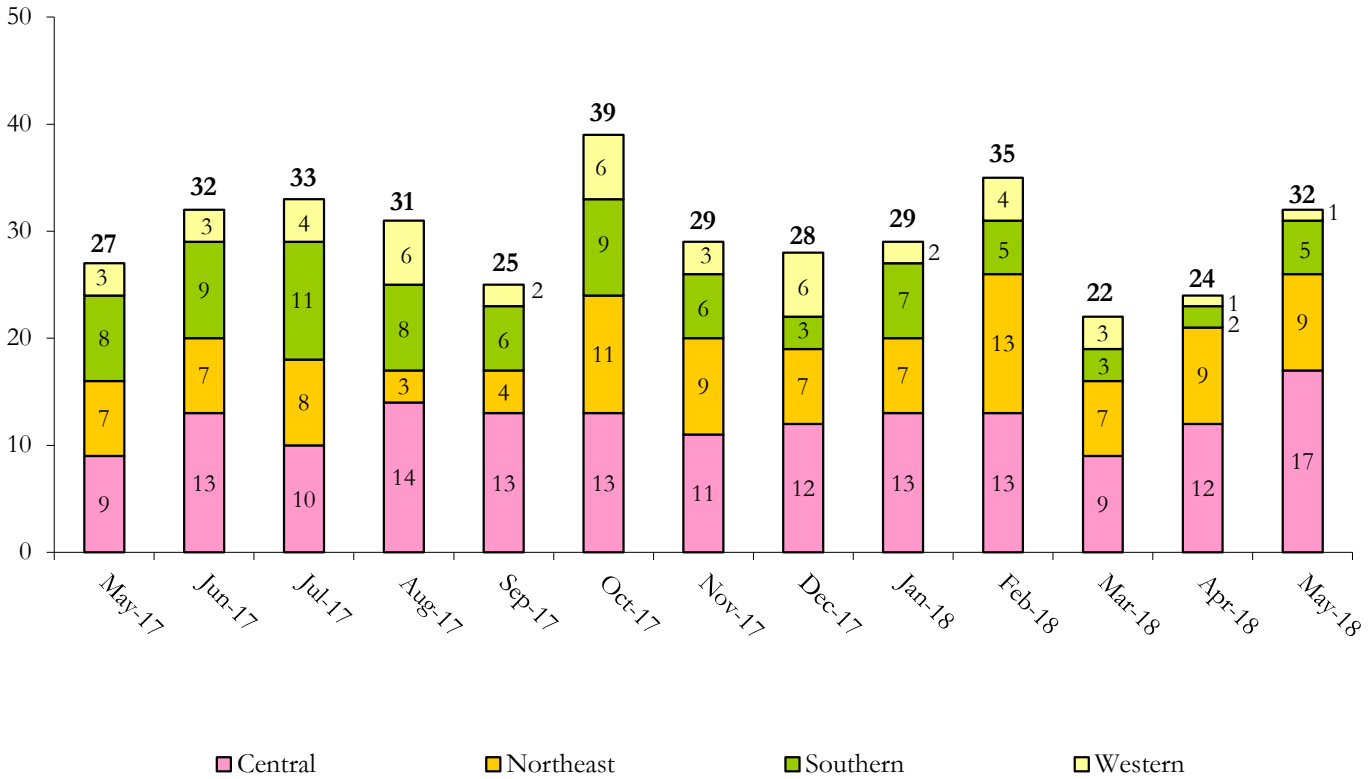
# May 2018 DYS Population Report

## IV. Commitment ADP and New Commitments

COMMITMENT ADP				
Region	Monthly		YTD	
	May	% Change	May	% Change from Prior FY
Central Region	272.8	1.4%	261.9	0.4%
Northeast Region	176.7	0.7%	178.7	-5.1%
Southern Region	136.0	-1.1%	142.9	4.5%
Western Region	62.6	3.0%	64.0	-0.7%
<b>Commitment ADP</b>	<b>648.1</b>	<b>0.8%</b>	<b>647.5</b>	<b>-0.4%</b>

NEW COMMITMENTS					
	FY 17-18		FY 16-17		% Change from last YTD
	May	YTD	May	YTD	
Central Region	17	153	9	111	37.8%
Northeast Region	9	93	7	127	-26.8%
Southern Region	5	71	8	71	0.0%
Western Region	1	40	3	37	8.1%
<b>TOTAL</b>	<b>32</b>	<b>357</b>	<b>27</b>	<b>346</b>	<b>3.2%</b>

### Monthly New Commitments



# May 2018 DYS Population Report

## V. Parole Services

PAROLE ADP				
Region	Monthly	YTD		% Change from prev YTD
		FY 17-18	FY 16-17	
Central Region	74.9	74.6	88.2	-15.4%
Northeast Region	59.7	66.1	69.4	-4.6%
Southern Region	43.9	41.3	44.9	-8.1%
Western Region	28.7	27.7	20.4	36.0%
<b>Total</b>	<b>207.3</b>	<b>209.7</b>	<b>222.8</b>	<b>-5.9%</b>

Region	Parole Intakes		Parole Discharges		
	Monthly	YTD	Monthly	YTD	LOS
Central Region	7	117	8	112	6.2
Northeast Region	8	100	4	106	6.7
Southern Region	6	63	5	73	6.7
Western Region	2	45	1	37	6.3
<b>Total</b>	<b>23</b>	<b>325</b>	<b>18</b>	<b>328</b>	<b>6.5</b>

### Monthly Parole ADP

