

# April 2018 FY 2017-2018 MONTHLY POPULATION REPORT

---

Prepared by the Division of Youth Services (DYS)  
Data Management and Analysis  
May 23rd



**COLORADO**

**Office of Children,  
Youth & Families**

Division of Youth Services

# April 2018

## DYS Population Report

|   |          |
|---|----------|
| <b>I. Summary Population Data</b>                       | <b>1</b> |
| <b>II. Detention ADP by Facility</b>                    | <b>2</b> |
| <b>III. Commitment Services</b>                         |          |
| A. State and Contract ADP by Facility                   | <b>3</b> |
| B. Community/Other Residential ADP by Facility          | <b>4</b> |
| <b>IV. Commitment ADP and New Commitments by Region</b> | <b>5</b> |
| <b>V. Parole Services</b>                               | <b>6</b> |

# April 2018 DYS Population Report

## I. Summary Population Data

### DETAINED YOUTH

|                         | April 2018   |              | YTD          |                  |
|-------------------------|--------------|--------------|--------------|------------------|
|                         | ADP          | % change     | ADP          | LOS              |
| State-Operated          | 252.1        | -1.7%        | 255.5        | 16.3 days        |
| Contracted Staff Secure | 5.2          | 20.5%        | 7.3          | 24.6 days        |
| <b>Total Detained</b>   | <b>257.2</b> | <b>-1.4%</b> | <b>262.8</b> | <b>16.5 days</b> |

### COMMITTED YOUTH

|  | April 2018   |              | YTD          |                    |
|--|--------------|--------------|--------------|--------------------|
|  | ADP          | % change     | ADP          | LOS                |
| Secure                                   | 387.4        | -2.9%        | 393.7        | 11.0 months        |
| Staff Supervised                         | 190.3        | 0.0%         | 188.1        | 9.9 months         |
| Community Residential                    | 59.7         | 8.7%         | 61.3         | 4.8 months         |
| Other Residential                        | 5.4          | -20.6%       | 3.7          | 1.5 months         |
| <b>Total Committed Residential</b>       | <b>642.8</b> | <b>-1.2%</b> | <b>646.8</b> | <b>20.1 months</b> |
| <i>Committed Residential w/o Boulder</i> | <i>638.8</i> | <i>-1.3%</i> | <i>644.8</i> | <i>-</i>           |

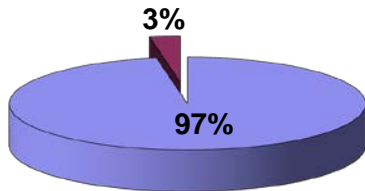
### PAROLE YOUTH

|        | April 2018 |          | YTD   |            |
|--------|------------|----------|-------|------------|
|        | ADP        | % change | ADP   | LOS        |
| Parole | 214.6      | -0.1%    | 208.9 | 6.5 months |

### TOTAL STATEWIDE ADP

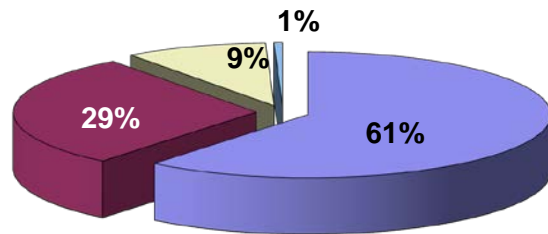
|                    | April 2018     |              | YTD            |                    |
|--------------------|----------------|--------------|----------------|--------------------|
|                    | ADP            | % change     | ADP            | LOS                |
| <b>DETENTION</b>   | <b>257.2</b>   | <b>-1.4%</b> | <b>262.8</b>   | <b>16.5 days</b>   |
| <b>COMMITMENT</b>  | <b>642.8</b>   | <b>-1.2%</b> | <b>646.8</b>   | <b>20.1 months</b> |
| <b>PAROLE</b>      | <b>214.6</b>   | <b>-0.1%</b> | <b>208.9</b>   | <b>6.5 months</b>  |
| <b>STATE TOTAL</b> | <b>1,114.6</b> | <b>-1.0%</b> | <b>1,118.5</b> | <b>N/A</b>         |

**Detention ADP  
Year to Date<sup>1</sup>**



■ State-Operated ■ Contracted Staff Secure

**Commitment ADP  
Year to Date<sup>1</sup>**



■ Secure ■ Staff Supervised ■ Community Residential ■ Other Residential

<sup>1</sup> Due to rounding, totals may not add to 100%.

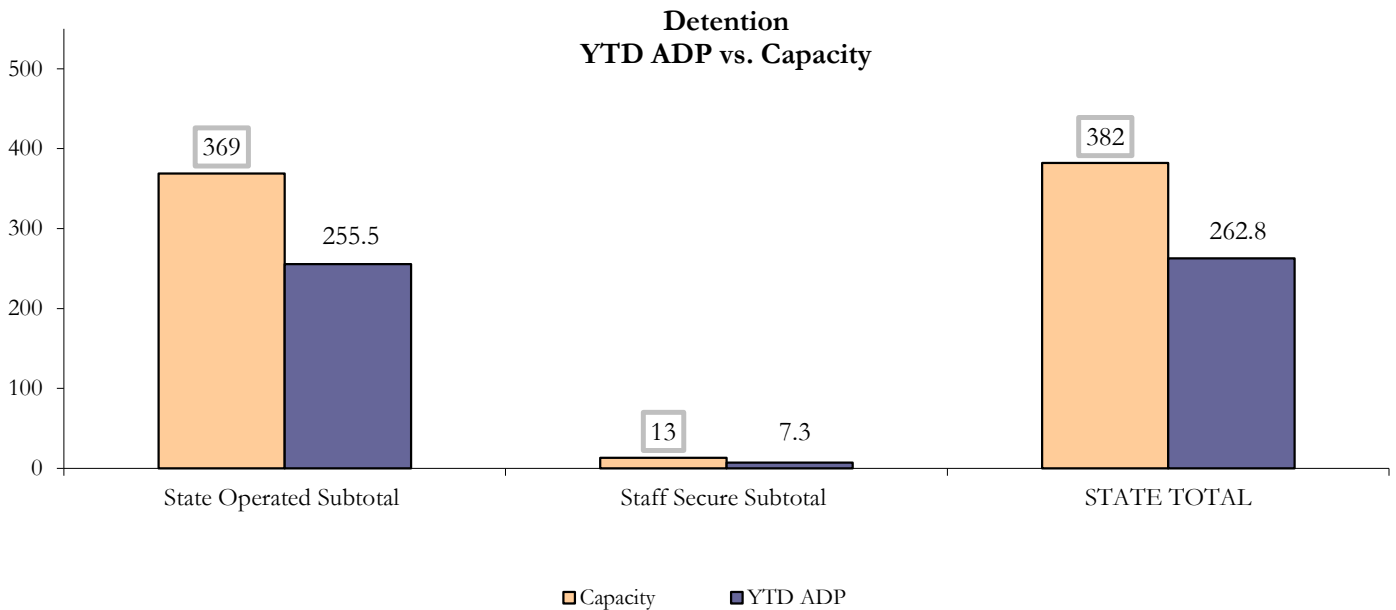
# April 2018 DYS Population Report

## II. Detention ADP by Facility

| State Operated Detention |                    |                          |              |              |                |              |             |
|--------------------------|--------------------|--------------------------|--------------|--------------|----------------|--------------|-------------|
| Facility                 | Operating Capacity | Average Daily Population |              |              | New Admissions |              | LOS (days)  |
|                          |                    | Monthly                  | YTD          | YTD % of Cap | Monthly        | YTD          | YTD         |
| Adams                    | 30                 | 22.7                     | 22.6         | 75.5%        | 41             | 437          | 15.3        |
| Gilliam                  | 64                 | 43.3                     | 41.6         | 65.0%        | 60             | 703          | 16.7        |
| Grand Mesa               | 30                 | 16.1                     | 20.4         | 68.1%        | 37             | 332          | 17.7        |
| Marvin Foote             | 62                 | 45.7                     | 40.7         | 65.7%        | 74             | 859          | 13.4        |
| Mount View               | 41                 | 32.9                     | 30.3         | 74.0%        | 60             | 565          | 16.4        |
| Platte Valley            | 64                 | 30.9                     | 36.2         | 56.6%        | 72             | 736          | 14.7        |
| Pueblo                   | 27                 | 11.5                     | 17.2         | 63.7%        | 32             | 342          | 14.8        |
| Spring Creek             | 51                 | 49.1                     | 46.4         | 91.0%        | 60             | 601          | 23.0        |
| <b>State Subtotal</b>    | <b>369</b>         | <b>252.1</b>             | <b>255.5</b> | <b>69.2%</b> | <b>436</b>     | <b>4,575</b> | <b>16.3</b> |

| Staff Secure Detention       |                    |                          |            |              |                |           |             |
|------------------------------|--------------------|--------------------------|------------|--------------|----------------|-----------|-------------|
| Facility                     | Operating Capacity | Average Daily Population |            |              | New Admissions |           | LOS (days)  |
|                              |                    | Monthly                  | YTD        | YTD % of Cap | Monthly        | YTD       | YTD         |
| Robert DeNier                | 9                  | 3.4                      | 5.5        | 60.9%        | 5              | 60        | 28.1        |
| Sage Detention               | 4                  | 1.8                      | 1.8        | 45.7%        | 5              | 31        | 17.4        |
| <b>Staff Secure Subtotal</b> | <b>13</b>          | <b>5.2</b>               | <b>7.3</b> | <b>56.2%</b> | <b>10</b>      | <b>91</b> | <b>24.6</b> |

| STATEWIDE TOTAL        |                    |                          |              |              |                |              |             |
|------------------------|--------------------|--------------------------|--------------|--------------|----------------|--------------|-------------|
|                        | Operating Capacity | Average Daily Population |              |              | New Admissions |              | LOS (days)  |
|                        |                    | Monthly                  | YTD          | YTD % of Cap | Monthly        | YTD          | YTD         |
| <b>Total Detention</b> | <b>382</b>         | <b>257.2</b>             | <b>262.8</b> | <b>68.8%</b> | <b>446</b>     | <b>4,666</b> | <b>16.5</b> |



# April 2018 DYS Population Report

## III. Commitment Services

### A. State and Contract ADP by Facility

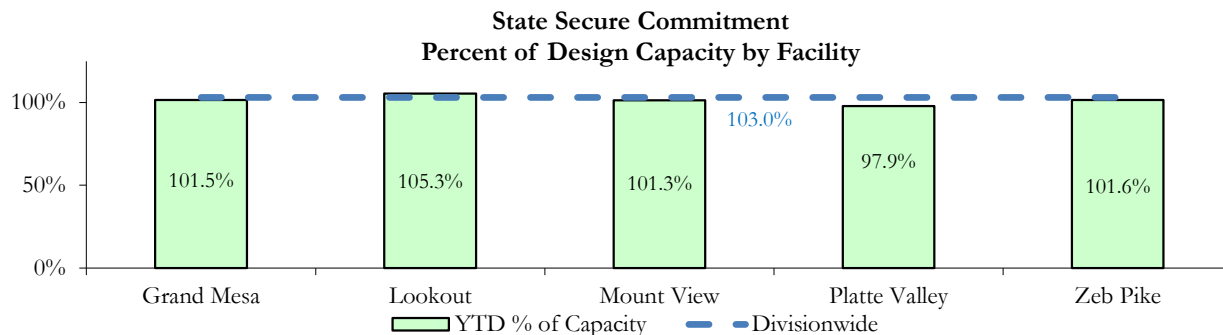
| STATE SECURE                     |              |              |            |               |
|----------------------------------|--------------|--------------|------------|---------------|
| Facility                         | ADP          |              | Capacity   |               |
|                                  | State Secure |              | Design     |               |
|                                  | Monthly      | YTD          | Capacity   | % of YTD      |
| <i>Adams</i> <sup>1</sup>        | 0.1          | 0.3          | -          | -             |
| <i>Gilliam</i> <sup>1</sup>      | 0.4          | 0.4          | -          | -             |
| Grand Mesa                       | 36.3         | 40.6         | 40         | 101.5%        |
| Lookout                          | 147.1        | 147.4        | 140        | 105.3%        |
| <i>Marvin Foote</i> <sup>1</sup> | 0.2          | 0.8          | -          | -             |
| Mount View                       | 57.9         | 65.9         | 65         | 101.3%        |
| Platte Valley                    | 57.1         | 53.9         | 55         | 97.9%         |
| <i>Pueblo</i> <sup>1</sup>       | 0.4          | 0.1          | -          | -             |
| <i>Spring Creek</i> <sup>2</sup> | 0.2          | 0.4          | -          | -             |
| Zeb Pike                         | 38.6         | 38.6         | 38         | 101.6%        |
| <b>Assessment Total</b>          | <b>21.6</b>  | <b>29.0</b>  | -          |               |
| <b>Secure Total</b>              | <b>316.7</b> | <b>319.2</b> | -          |               |
| <b>STATE SECURE TOTAL</b>        | <b>338.3</b> | <b>348.2</b> | <b>338</b> | <b>103.0%</b> |

<sup>1</sup> Detention only facilities with commitment ADP due to committed youth being held in detention prior to transfer.

<sup>2</sup> Spring Creek was designated a detention only facility effective November 1, 2016 and no longer has commitment capacity allocation.

### CONTRACT: PRIVATE SECURE + STAFF SUPERVISED

| Facility/Program <sup>3</sup>                         | ADP          |              |
|---|--------------|--------------|
|   | Monthly      | YTD          |
| (Private Secure) Betty K. Marler Center               | 40.2         | 39.7         |
| (Private Secure) Robert DeNier                        | 8.9          | 5.8          |
| Alternative Homes For Youth - Greeley                 | 17.6         | 17.1         |
| Gateway Residential Program - Delta                   | 2.8          | 2.8          |
| Hilltop (Residential Youth Services)                  | 3.0          | 3.3          |
| Jefferson Hills - Aurora                              | 27.0         | 32.5         |
| Ridge View  | 129.7        | 121.1        |
| Southern Peaks  | 2.0          | 4.7          |
| Third Way Center - Lowry                              | 8.3          | 6.7          |
| <i>Private Secure &amp; Staff Supervised Subtotal</i> | <b>239.4</b> | <b>233.6</b> |



<sup>3</sup> Programs with both Secure and Community placements are aggregated into one category until further TRAILS builds can allow for programs to register as multiple types.

# April 2018 DYS Population Report

## III. Commitment Services Continued

### B. Community/Other Residential ADP by Facility<sup>1</sup>

| <b>COMMUNITY RESIDENTIAL</b>                                  |                |              |
|---|----------------|--------------|
|   | <i>Monthly</i> | <i>YTD</i>   |
| Ariel Clinical Services                                       | 0.0            | 1.0          |
| Community Corrections: Southwest Colorado                     | 0.0            | 0.1          |
| Dale House Project  | 9.3            | 8.1          |
| Denver Area Youth Services (DAYS)                             | 2.2            | 2.4          |
| Gateway Residential Program - Grand Junction                  | 3.0            | 2.3          |
| Griffith Centers for Children, Inc.                           | 5.6            | 5.2          |
| Job Corps   | 3.0            | 3.9          |
| Kids Crossing   | 0.4            | 1.0          |
| Mesa County Community Corrections                             | 0.0            | 0.9          |
| Mt Evans Qualifying House                                     | 12.6           | 9.9          |
| Savio House   | 0.0            | 0.3          |
| Synergy Administration  | 2.8            | 2.9          |
| Third Way Center, Bannock                                     | 0.0            | 1.5          |
| Third Way Center, Pontiac                                     | 2.7            | 5.7          |
| Third Way Center, York  | 2.0            | 1.9          |
| Third Way Center, Lincoln                                     | 3.9            | 3.4          |
| Turning Point Center, Prospect                                | 3.6            | 4.7          |
| Turning Point, Mathews St.                                    | 7.6            | 5.8          |
| Whimspire Child Placement                                     | 1.0            | 0.3          |
| Sage Residential  | 0.0            | 0.1          |
| <i>Community Subtotal</i>                                     | <i>59.7</i>    | <i>61.3</i>  |
| <br>  |                |              |
| <i>Private Secure + Staff Supervised + Community Subtotal</i> | <i>299.0</i>   | <i>294.8</i> |
| <br><b>OTHER RESIDENTIAL</b>                                  |                |              |
|   | <i>Monthly</i> | <i>YTD</i>   |
| CMHI-Ft. Logan  | 0.0            | 0.1          |
| CMHI-Pueblo   | 0.0            | 0.5          |
| Job Corps Parole Program (Federally funded)                   | 3.0            | 2.0          |
| Other Mental Health Facility                                  | 0.0            | 0.02         |
| Residential Drug/Alcohol Program                              | 0.0            | 0.4          |
| Residential Mental Health Program                             | 3.0            | 1.5          |
| Shelter Care (short term)                                     | 0.3            | 0.3          |
| <i>Other Residential Subtotal<sup>2</sup></i>                 | <i>5.4</i>     | <i>3.7</i>   |
| <br><b>RESIDENTIAL TOTAL</b>                                  |                |              |
|   | <b>642.8</b>   | <b>646.8</b> |

<sup>1</sup> Programs with both Secure and Community placements are aggregated into one category until further TRAILS builds can allow for programs to register as multiple types.

<sup>2</sup> Due to relatively few youth referred to these types of placements, the Other Residential Subtotals may not be the sum of individual placements; this is typically the result of rounding errors and the method by which ADP is calculated.

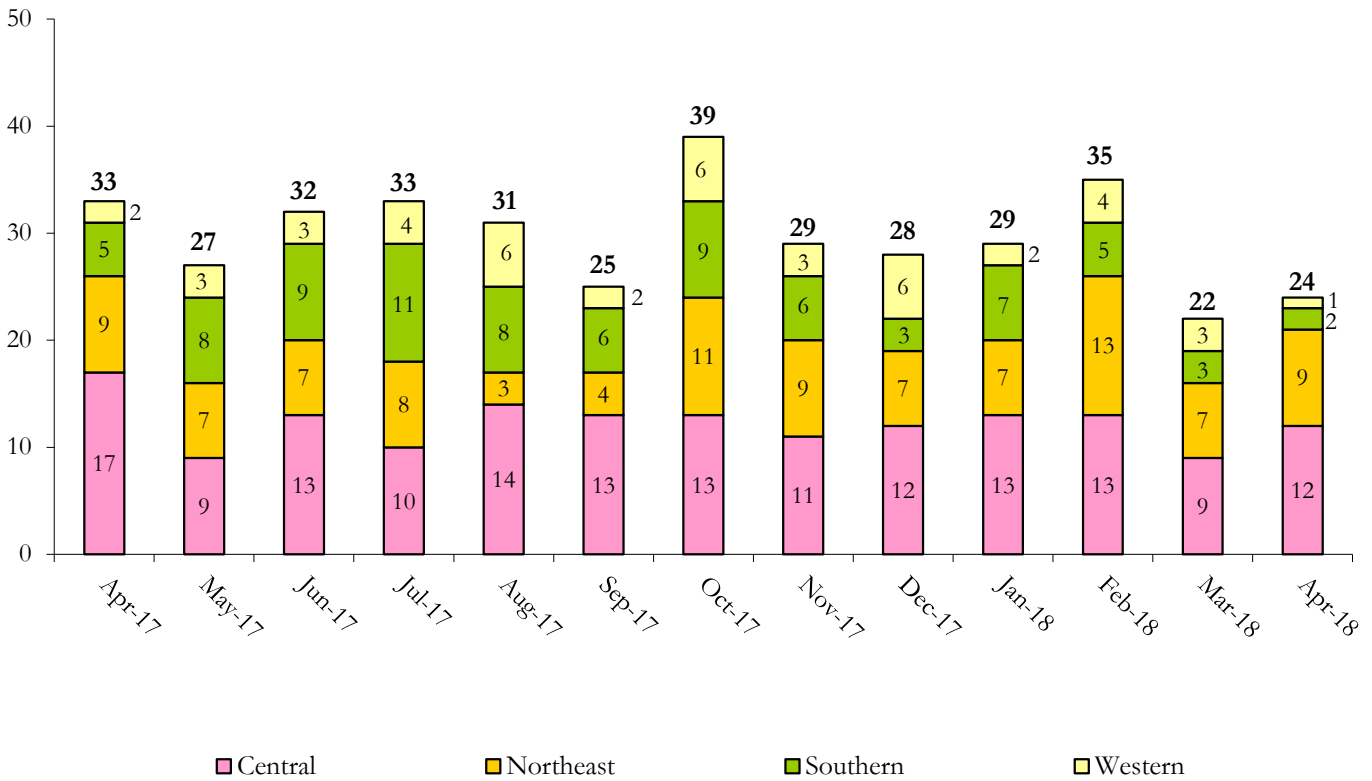
# April 2018 DYS Population Report

## IV. Commitment ADP and New Commitments

| COMMITMENT ADP        |              |              |              |                        |
|-----------------------|--------------|--------------|--------------|------------------------|
| Region                | Monthly      |              | YTD          |                        |
|                       | April        | % Change     | April        | % Change from Prior FY |
| Central Region        | 269.1        | 0.4%         | 260.2        | -0.4%                  |
| Northeast Region      | 175.5        | -2.8%        | 177.9        | -5.0%                  |
| Southern Region       | 137.4        | -0.8%        | 144.6        | 5.9%                   |
| Western Region        | 60.8         | -4.7%        | 64.1         | -0.1%                  |
| <b>Commitment ADP</b> | <b>642.8</b> | <b>-1.2%</b> | <b>646.8</b> | <b>-0.4%</b>           |

| NEW COMMITMENTS  |           |            |           |            |                        |
|------------------|-----------|------------|-----------|------------|------------------------|
|                  | FY 17-18  |            | FY 16-17  |            | % Change from last YTD |
|                  | April     | YTD        | April     | YTD        |                        |
| Central Region   | 12        | 132        | 17        | 102        | 29.4%                  |
| Northeast Region | 9         | 84         | 9         | 120        | -30.0%                 |
| Southern Region  | 2         | 66         | 5         | 63         | 4.8%                   |
| Western Region   | 1         | 39         | 2         | 34         | 14.7%                  |
| <b>TOTAL</b>     | <b>24</b> | <b>321</b> | <b>33</b> | <b>319</b> | <b>0.6%</b>            |

### Monthly New Commitments



# April 2018 DYS Population Report

## V. Parole Services

| PAROLE ADP       |              |              |              |                        |
|------------------|--------------|--------------|--------------|------------------------|
| Region           | Monthly      | YTD          |              | % Change from prev YTD |
|                  |              | FY 17-18     | FY 16-17     |                        |
| Central Region   | 83.5         | 73.5         | 89.4         | -17.9%                 |
| Northeast Region | 60.5         | 66.8         | 70.2         | -4.8%                  |
| Southern Region  | 41.6         | 41.0         | 45.3         | -9.4%                  |
| Western Region   | 28.9         | 27.6         | 20.4         | 35.0%                  |
| <b>Total</b>     | <b>214.6</b> | <b>208.9</b> | <b>225.3</b> | <b>-7.3%</b>           |

| Region           | Parole Intakes |            | Parole Discharges |            |            |
|------------------|----------------|------------|-------------------|------------|------------|
|                  | Monthly        | YTD        | Monthly           | YTD        | LOS        |
| Central Region   | 4              | 110        | 13                | 104        | 6.2        |
| Northeast Region | 9              | 91         | 13                | 100        | 6.7        |
| Southern Region  | 7              | 57         | 4                 | 68         | 6.7        |
| Western Region   | 2              | 43         | 5                 | 36         | 6.3        |
| <b>Total</b>     | <b>22</b>      | <b>301</b> | <b>35</b>         | <b>308</b> | <b>6.5</b> |

