

# February 2018 FY 2017-2018 MONTHLY POPULATION REPORT

---

Prepared by the Division of Youth Services (DYS)  
Data Management and Analysis  
March 22nd



**COLORADO**

**Office of Children,  
Youth & Families**

Division of Youth Services

# February 2018 DYS Population Report

<b>I. Summary Population Data</b>	<b>1</b>
<b>II. Detention ADP by Facility</b>	<b>2</b>
<b>III. Commitment Services</b>	
A. State and Contract ADP by Facility	<b>3</b>
B. Community/Other Residential ADP by Facility	<b>4</b>
<b>IV. Commitment ADP and New Commitments by Region</b>	<b>5</b>
<b>V. Parole Services</b>	<b>6</b>

# February 2018 DYS Population Report

## I. Summary Population Data

### DETAINED YOUTH

	February 2018		YTD	
	ADP	% change	ADP	LOS
State-Operated	249.0	-1.2%	254.7	16.5 days
Contracted Staff Secure	3.4	-36.7%	8.0	24.5 days
<b>Total Detained</b>	<b>252.4</b>	<b>-1.9%</b>	<b>262.6</b>	<b>16.7 days</b>

### COMMITTED YOUTH

	February 2018		YTD	
	ADP	% change	ADP	LOS
Secure	409.4	3.4%	395.2	10.9 months
Staff Supervised	184.3	-2.4%	187.7	10.0 months
Community Residential	55.8	-10.2%	61.2	4.8 months
Other Residential	8.0	146.2%	4.9	1.5 months
<b>Total Committed Residential</b>	<b>657.6</b>	<b>1.1%</b>	<b>649.0</b>	<b>20.2 months</b>
<i>Committed Residential w/o Boulder</i>	<i>655.1</i>	<i>1.2%</i>	<i>647.5</i>	<i>-</i>

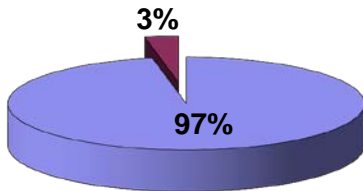
### PAROLE YOUTH

	February 2018		YTD	
	ADP	% change	ADP	LOS
Parole	204.3	2.1%	206.6	6.7 months

### TOTAL STATEWIDE ADP

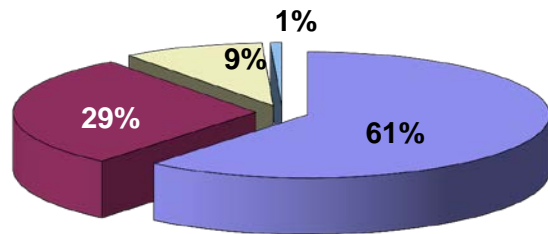
	February 2018		YTD	
	ADP	% change	ADP	LOS
<b>DETENTION</b>	<b>252.4</b>	<b>-1.9%</b>	<b>262.6</b>	<b>16.7 days</b>
<b>COMMITMENT</b>	<b>657.6</b>	<b>1.1%</b>	<b>649.0</b>	<b>20.2 months</b>
<b>PAROLE</b>	<b>204.3</b>	<b>2.1%</b>	<b>206.6</b>	<b>6.7 months</b>
<b>STATE TOTAL</b>	<b>1,114.3</b>	<b>0.6%</b>	<b>1,118.2</b>	<b>N/A</b>

**Detention ADP  
Year to Date<sup>1</sup>**



■ State-Operated ■ Contracted Staff Secure

**Commitment ADP  
Year to Date<sup>1</sup>**



■ Secure ■ Staff Supervised ■ Community Residential ■ Other Residential

<sup>1</sup> Due to rounding, totals may not add to 100%.

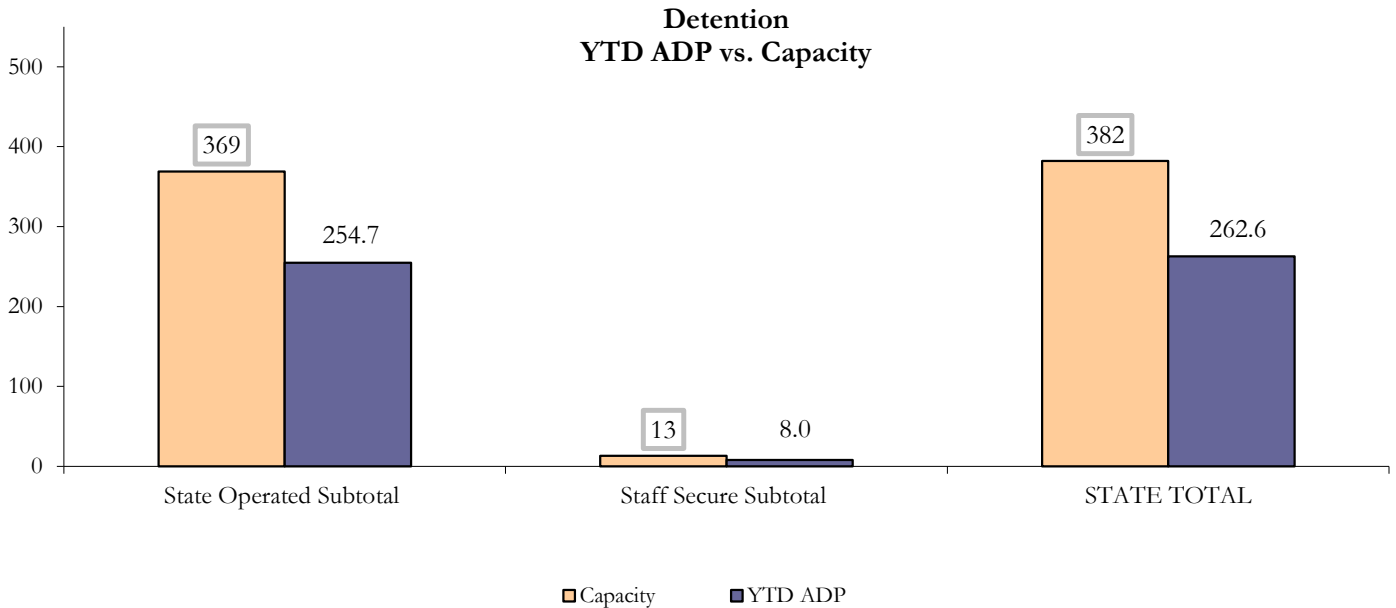
# February 2018 DYS Population Report

## II. Detention ADP by Facility

State Operated Detention							
Facility	Operating Capacity	Average Daily Population			New Admissions		LOS (days)
		Monthly	YTD	YTD % of Cap	Monthly	YTD	YTD
Adams	30	22.9	22.8	75.9%	36	346	15.5
Gilliam	64	33.2	41.4	64.6%	53	567	17.2
Grand Mesa	30	22.4	21.5	71.6%	34	261	18.3
Marvin Foote	62	38.6	39.3	63.4%	77	697	13.5
Mount View	41	33.6	29.9	72.8%	51	446	14.9
Platte Valley	64	35.0	35.8	55.9%	70	592	15.4
Pueblo	27	18.5	18.0	66.7%	32	284	15.2
Spring Creek	51	44.6	46.1	90.4%	58	474	23.6
<b>State Subtotal</b>	<b>369</b>	<b>249.0</b>	<b>254.7</b>	<b>69.0%</b>	<b>411</b>	<b>3,667</b>	<b>16.5</b>

Staff Secure Detention							
Facility	Operating Capacity	Average Daily Population			New Admissions		LOS (days)
		Monthly	YTD	YTD % of Cap	Monthly	YTD	YTD
Robert DeNier	9	3.3	5.9	65.5%	8	54	27.0
Sage Detention	4	0.1	2.1	51.5%	3	25	19.6
<b>Staff Secure Subtotal</b>	<b>13</b>	<b>3.4</b>	<b>8.0</b>	<b>61.2%</b>	<b>11</b>	<b>79</b>	<b>24.5</b>

STATEWIDE TOTAL							
	Operating Capacity	Average Daily Population			New Admissions		LOS (days)
		Monthly	YTD	YTD % of Cap	Monthly	YTD	YTD
<b>Total Detention</b>	<b>382</b>	<b>252.4</b>	<b>262.6</b>	<b>68.7%</b>	<b>422</b>	<b>3,746</b>	<b>16.7</b>



# February 2018 DYS Population Report

## III. Commitment Services

### A. State and Contract ADP by Facility

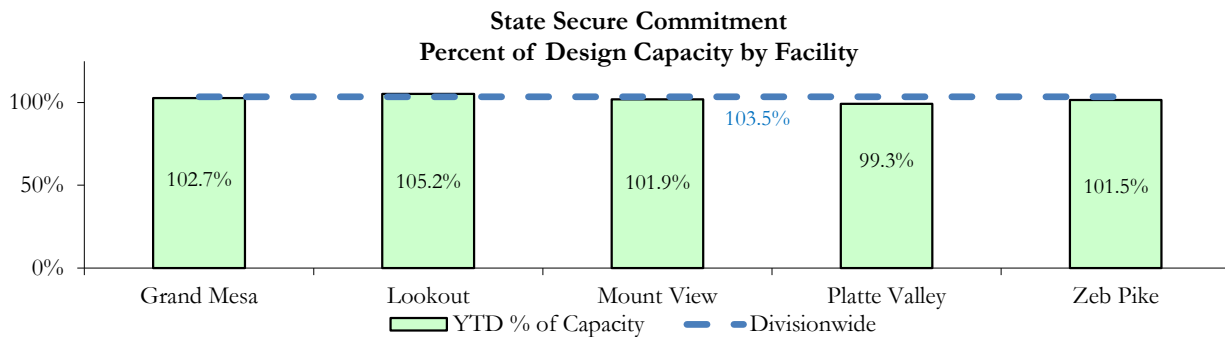
STATE SECURE				
Facility	ADP		Capacity	
	State Secure		Design	
	Monthly	YTD	Capacity	% of YTD
<i>Adams</i> <sup>1</sup>	0.3	0.3	-	-
<i>Gilliam</i> <sup>1</sup>	0.5	0.4	-	-
Grand Mesa	39.8	41.1	40	102.7%
Lookout	148.2	147.3	140	105.2%
<i>Marvin Foote</i> <sup>1</sup>	0.3	0.9	-	-
Mount View	77.0	66.2	65	101.9%
Platte Valley	61.6	54.6	55	99.3%
<i>Pueblo</i> <sup>1</sup>	0.2	0.1	-	-
<i>Spring Creek</i> <sup>2</sup>	0.5	0.5	-	-
Zeb Pike	38.3	38.6	38	101.5%
<b>Assessment Total</b>	<b>33.0</b>	<b>29.6</b>	-	
<b>Secure Total</b>	<b>333.7</b>	<b>320.3</b>	-	
<b>STATE SECURE TOTAL</b>	<b>366.7</b>	<b>349.9</b>	<b>338</b>	<b>103.5%</b>

<sup>1</sup> Detention only facilities with commitment ADP due to committed youth being held in detention prior to transfer.

<sup>2</sup> Spring Creek was designated a detention only facility effective November 1, 2016 and no longer has commitment capacity allocation.

### CONTRACT: PRIVATE SECURE + STAFF SUPERVISED

Facility/Program <sup>2</sup>	ADP	
	Monthly	YTD
(Private Secure) Betty K. Marler Center	40.5	39.5
(Private Secure) Robert DeNier	2.2	5.7
Alternative Homes For Youth - Greeley	15.7	17.0
Gateway Residential Program - Delta	3.3	2.7
Hilltop (Residential Youth Services)	3.8	3.3
Jefferson Hills - Aurora	27.6	34.1
Ridge View	121.7	119.3
Southern Peaks	4.9	5.2
Third Way Center - Lowry	7.2	6.1
<i>Private Secure &amp; Staff Supervised Subtotal</i>	<b>227.0</b>	<b>232.9</b>



<sup>2</sup> Programs with both Secure and Community placements are aggregated into one category until further TRAILS builds can allow for programs to register as multiple types.

# February 2018 DYS Population Report

## III. Commitment Services Continued

### B. Community/Other Residential ADP by Facility<sup>1</sup>

<b>COMMUNITY RESIDENTIAL</b>		
	<i>Monthly</i>	<i>YTD</i>
Ariel Clinical Services	0.9	1.2
Community Corrections: Southwest Colorado	0.0	0.1
Dale House Project	9.2	7.7
Denver Area Youth Services (DAYS)	0.6	2.6
Gateway Residential Program - Grand Junction	2.9	2.1
Griffith Centers for Children, Inc.	4.8	5.3
Job Corps	1.6	4.2
Kids Crossing	1.4	1.1
Mesa County Community Corrections	1.5	1.1
Mt Evans Qualifying House	6.4	9.0
Savio House	0.1	0.4
Synergy Administration	2.9	3.0
Third Way Center, Bannock	2.0	1.7
Third Way Center, Pontiac	4.1	6.5
Third Way Center, York	2.0	1.9
Third Way Center, Lincoln	3.1	3.1
Turning Point Center, Prospect	5.0	4.8
Turning Point, Mathews St.	6.5	5.4
<i>Community Subtotal</i>	<i>55.8</i>	<i>61.2</i>
<i>Private Secure + Staff Supervised + Community Subtotal</i>	<i>282.8</i>	<i>294.1</i>
<b>OTHER RESIDENTIAL</b>		
	<i>Monthly</i>	<i>YTD</i>
CMHI-Pueblo	0.0	0.7
Job Corps Parole Program (Federally funded)	2.9	1.7
Other Mental Health Facility	0.0	0.02
Residential Drug/Alcohol Program	1.5	0.5
Residential Mental Health Program	1.0	1.3
Shelter Care (short term)	1.0	0.3
<i>Other Residential Subtotal<sup>2</sup></i>	<i>8.0</i>	<i>4.9</i>
<b>RESIDENTIAL TOTAL</b>		
	<b>657.6</b>	<b>649.0</b>

<sup>1</sup> Programs with both Secure and Community placements are aggregated into one category until further TRAILS builds can allow for programs to register as multiple types.

<sup>2</sup> Due to relatively few youth referred to these types of placements, the Other Residential Subtotals may not be the sum of individual placements; this is typically the result of rounding errors and the method by which ADP is calculated.

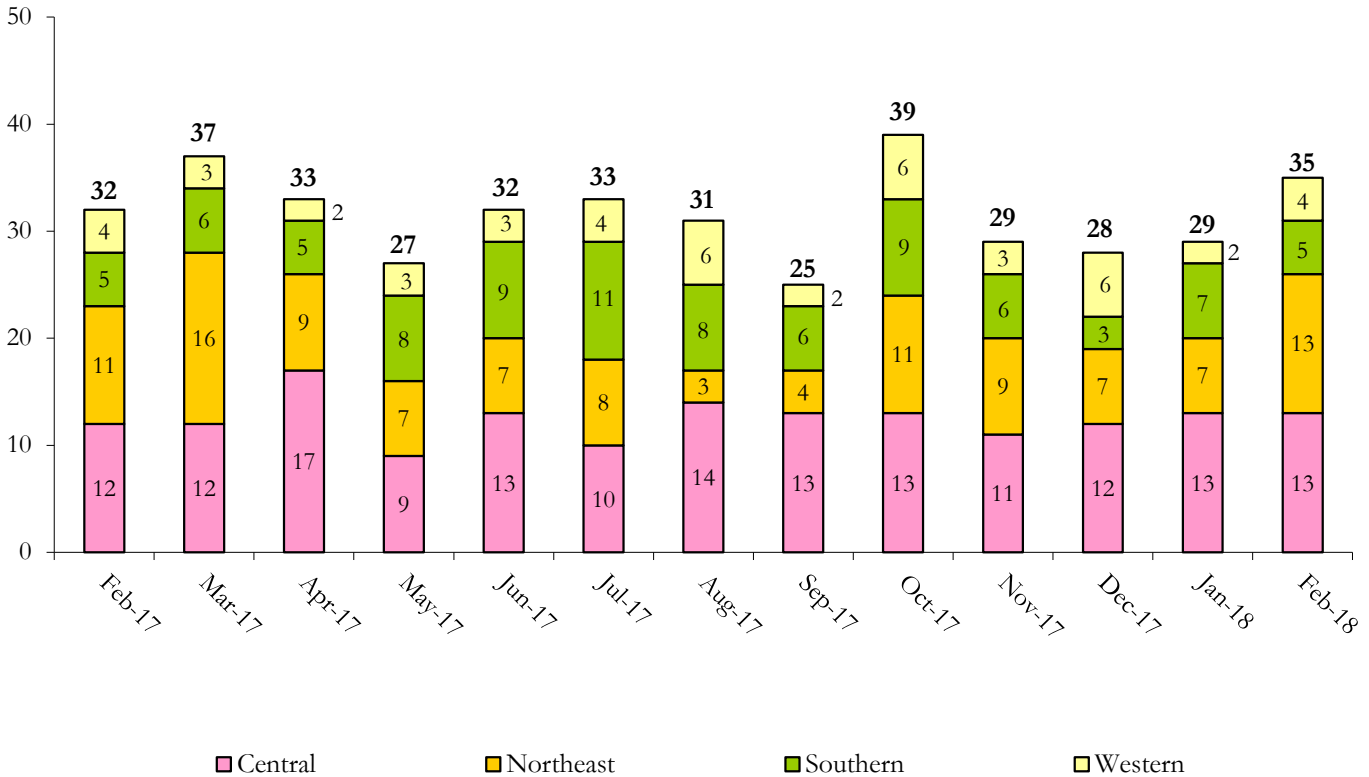
# February 2018 DYS Population Report

## IV. Commitment ADP and New Commitments

COMMITMENT ADP				
Region	Monthly		YTD	
	February	% Change	February	% Change from Prior FY
Central Region	263.5	0.1%	257.4	-1.8%
Northeast Region	183.9	6.1%	179.8	-2.6%
Southern Region	146.9	-1.1%	147.3	8.2%
Western Region	63.2	-2.9%	64.5	3.3%
<b>Commitment ADP</b>	<b>657.6</b>	<b>1.1%</b>	<b>649.0</b>	<b>0.6%</b>

NEW COMMITMENTS					
	FY 17-18		FY 16-17		% Change from last YTD
	February	YTD	February	YTD	
Central Region	13	110	12	73	50.7%
Northeast Region	13	68	11	93	-26.9%
Southern Region	5	60	5	51	17.6%
Western Region	4	33	4	29	13.8%
<b>TOTAL</b>	<b>35</b>	<b>271</b>	<b>32</b>	<b>246</b>	<b>10.2%</b>

### Monthly New Commitments



# February 2018 DYS Population Report

## V. Parole Services

PAROLE ADP				
Region	Monthly	YTD		% Change from prev YTD
		FY 17-18	FY 16-17	
Central Region	75.9	71.3	93.3	-23.6%
Northeast Region	63.2	68.6	74.1	-7.4%
Southern Region	37.0	40.3	46.8	-14.0%
Western Region	28.3	26.5	20.0	32.9%
<b>Total</b>	<b>204.3</b>	<b>206.6</b>	<b>234.1</b>	<b>-11.7%</b>

Region	Parole Intakes		Parole Discharges		
	Monthly	YTD	Monthly	YTD	LOS
Central Region	13	92	6	81	6.3
Northeast Region	10	72	7	76	6.8
Southern Region	9	44	7	56	7.1
Western Region	9	37	1	25	6.4
<b>Total</b>	<b>41</b>	<b>245</b>	<b>21</b>	<b>238</b>	<b>6.7</b>

