

January 2018 FY 2017-2018 MONTHLY POPULATION REPORT

Prepared by the Division of Youth Services (DYS)
Data Management and Analysis
February 26th



COLORADO

**Office of Children,
Youth & Families**

Division of Youth Services

January 2018 DYS Population Report

I.	Summary Population Data	1
II.	Detention ADP by Facility	2
III.	Commitment Services	
	A. State and Contract ADP by Facility	3
	B. Community/Other Residential ADP by Facility	4
IV.	Commitment ADP and New Commitments by Region	5
V.	Parole Services	6

January 2018 DYS Population Report

I. Summary Population Data

DETAINED YOUTH

	January 2018		YTD	
	ADP	% change	ADP	LOS
State-Operated	251.9	1.9%	255.4	16.7 days
Contracted Staff Secure	5.4	-31.7%	8.5	25.2 days
Total Detained	257.3	0.9%	264.0	16.9 days

COMMITTED YOUTH

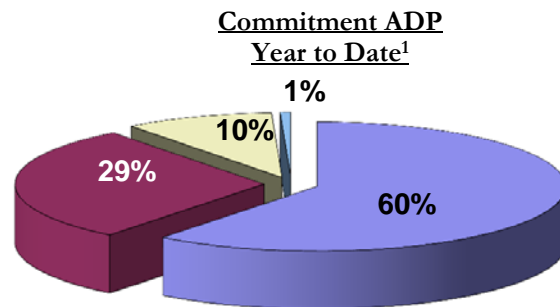
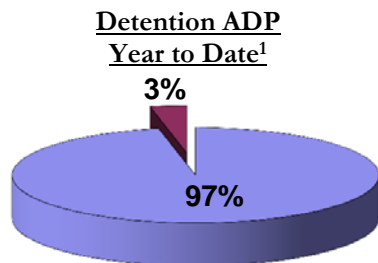
	January 2018		YTD	
	ADP	% change	ADP	LOS
Secure	396.0	-0.8%	392.6	10.9 months
Staff Supervised	188.9	0.3%	188.1	9.9 months
Community Residential	62.1	7.2%	62.7	4.9 months
Other Residential	3.3	-6.5%	4.4	1.5 months
Total Committed Residential	650.3	0.2%	647.8	20.2 months
<i>Committed Residential w/o Boulder</i>	<i>647.3</i>	<i>0.2%</i>	<i>646.4</i>	<i>-</i>

PAROLE YOUTH

	January 2018		YTD	
	ADP	% change	ADP	LOS
Parole	200.1	-7.9%	207.3	6.8 months

TOTAL STATEWIDE ADP

	January 2018		YTD	
	ADP	% change	ADP	LOS
DETENTION	257.3	0.9%	264.0	16.9 days
COMMITMENT	650.3	0.2%	647.8	20.2 months
PAROLE	200.1	-7.9%	207.3	6.8 months
STATE TOTAL	1,107.7	-1.2%	1,119.0	N/A



■ State-Operated ■ Contracted Staff Secure

■ Secure ■ Staff Supervised ■ Community Residential ■ Other Residential

¹ Due to rounding, totals may not add to 100%.

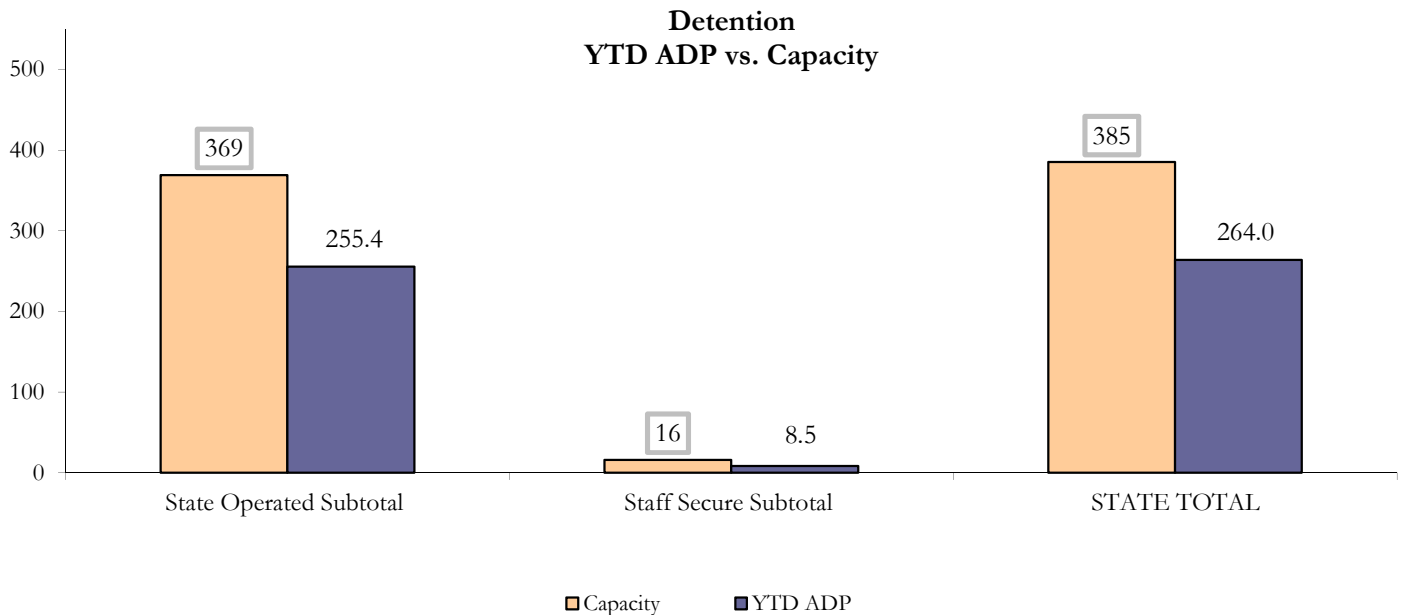
January 2018 DYS Population Report

II. Detention ADP by Facility

State Operated Detention							
Facility	Operating Capacity	Average Daily Population			New Admissions		LOS (days)
		Monthly	YTD	YTD % of Cap	Monthly	YTD	YTD
Adams	30	21.6	22.8	75.8%	45	310	15.0
Gilliam	64	44.4	42.4	66.3%	77	514	17.4
Grand Mesa	30	23.6	21.4	71.2%	33	227	17.7
Marvin Foote	62	41.2	39.4	63.5%	92	620	13.4
Mount View	41	30.7	29.4	71.6%	63	395	15.1
Platte Valley	64	23.8	35.9	56.1%	75	518	16.0
Pueblo	27	20.2	18.0	66.5%	35	252	14.8
Spring Creek	51	46.4	46.3	90.7%	62	416	24.6
State Subtotal	369	251.9	255.4	69.2%	482	3,252	16.7

Staff Secure Detention							
Facility	Operating Capacity	Average Daily Population			New Admissions		LOS (days)
		Monthly	YTD	YTD % of Cap	Monthly	YTD	YTD
Brown Center	3	0.0	0.0	0.0%	0	0	0.0
Robert DeNier	9	4.0	6.2	69.2%	5	46	26.7
Youthtrack San Luis Valley	4	1.4	2.3	57.9%	2	22	21.9
Staff Secure Subtotal	16	5.4	8.5	53.4%	7	68	25.2

STATEWIDE TOTAL							
	Operating Capacity	Average Daily Population			New Admissions		LOS (days)
		Monthly	YTD	YTD % of Cap	Monthly	YTD	YTD
Total Detention	385	257.3	264.0	68.6%	489	3,320	16.9



January 2018 DYS Population Report

III. Commitment Services

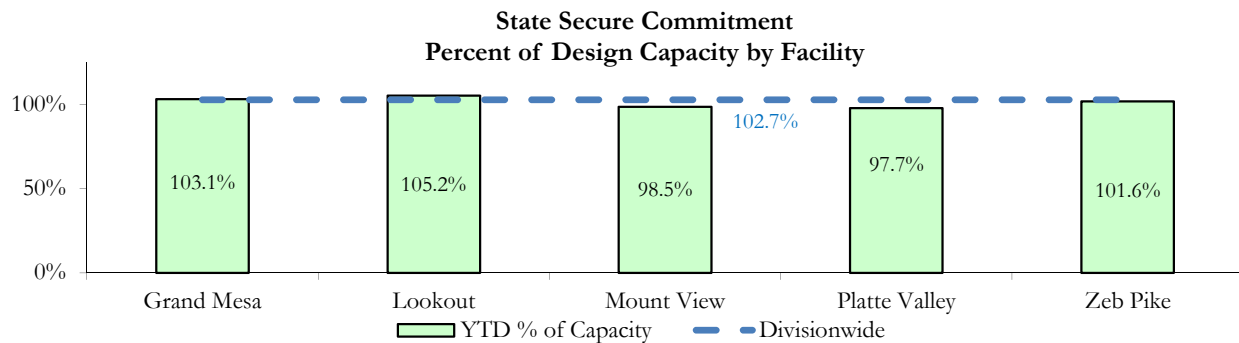
A. State and Contract ADP by Facility

STATE SECURE					
Facility		ADP		Capacity	
		State Secure		Design	
		Monthly	YTD	Capacity	% of YTD
	<i>Adams</i> ¹	0.5	0.3	-	-
	<i>Gilliam</i> ¹	0.1	0.4	-	-
	Grand Mesa	43.7	41.2	40	103.1%
	Lookout	148.4	147.2	140	105.2%
	<i>Marvin Foote</i> ¹	0.1	1.0	-	-
	Mount View	64.3	64.0	65	98.5%
	Platte Valley	56.1	53.7	55	97.7%
	<i>Pueblo</i> ¹	0.1	0.0	-	-
	<i>Spring Creek</i> ²	0.2	0.5	-	-
	Zeb Pike	38.8	38.6	38	101.6%
	Assessment Total	22.3	29.2	-	
	Secure Total	330.0	317.8	-	
	STATE SECURE TOTAL	352.2	347.0	338	102.7%

¹ Detention only facilities with commitment ADP due to committed youth being held in detention prior to transfer.

² Spring Creek was designated a detention only facility effective November 1, 2016 and no longer has commitment capacity allocation.

CONTRACT: PRIVATE SECURE + STAFF SUPERVISED		
Facility/Program ²	ADP	
	Monthly	YTD
(Private Secure) Betty K. Marler Center	39.4	39.4
(Private Secure) Robert DeNier	4.4	6.2
Alternative Homes For Youth - Greeley	18.1	17.2
Gateway Residential Program - Delta	4.2	2.6
Hilltop (Residential Youth Services)	3.6	3.3
Jefferson Hills - Aurora	29.2	34.9
Ridge View	120.1	119.0
Southern Peaks	5.8	5.2
Third Way Center - Lowry	8.1	5.9
<i>Private Secure & Staff Supervised Subtotal</i>	232.7	233.7



² Programs with both Secure and Community placements are aggregated into one category until further TRAILS builds can allow for programs to register as multiple types.

January 2018 DYS Population Report

III. Commitment Services Continued

B. Community/Other Residential ADP by Facility¹

COMMUNITY RESIDENTIAL		
	<i>Monthly</i>	<i>YTD</i>
Ariel Clinical Services	0.3	1.2
Community Corrections: Southwest Colorado	0.0	0.1
Dale House Project	9.6	7.5
Denver Area Youth Services (DAYS)	1.4	2.7
Gateway Residential Program - Grand Junction	1.0	2.0
Griffith Centers for Children, Inc.	5.4	5.4
Job Corps	3.8	4.6
Kids Crossing	0.9	1.1
Mesa County Community Corrections	1.5	1.0
Mt Evans Qualifying House	8.3	10.0
Savio House	1.0	0.5
Synergy Administration	4.0	3.0
Third Way Center, Bannock	2.6	1.7
Third Way Center, Pontiac	6.2	6.9
Third Way Center, York	2.0	1.9
Third Way Center, Lincoln	3.5	3.2
Turning Point Center, Prospect	6.5	5.3
Turning Point, Mathews St.	4.1	4.7
<i>Community Subtotal</i>	<i>62.1</i>	<i>62.7</i>
<i>Private Secure + Staff Supervised + Community Subtotal</i>	<i>294.8</i>	<i>296.3</i>
OTHER RESIDENTIAL		
	<i>Monthly</i>	<i>YTD</i>
CMHI-Pueblo	0.9	0.7
Job Corps Parole Program (Federally funded)	1.0	1.6
Other Mental Health Facility	0.1	0.02
Residential Drug/Alcohol Program	0.4	0.3
Residential Mental Health Program	1.9	1.4
Shelter Care (short term)	0.5	0.2
<i>Other Residential Subtotal²</i>	<i>3.3</i>	<i>4.4</i>
RESIDENTIAL TOTAL	650.3	647.8

¹ Programs with both Secure and Community placements are aggregated into one category until further TRAILS builds can allow for programs to register as multiple types.

² Due to relatively few youth referred to these types of placements, the Other Residential Subtotals may not be the sum of individual placements; this is typically the result of rounding errors and the method by which ADP is calculated.

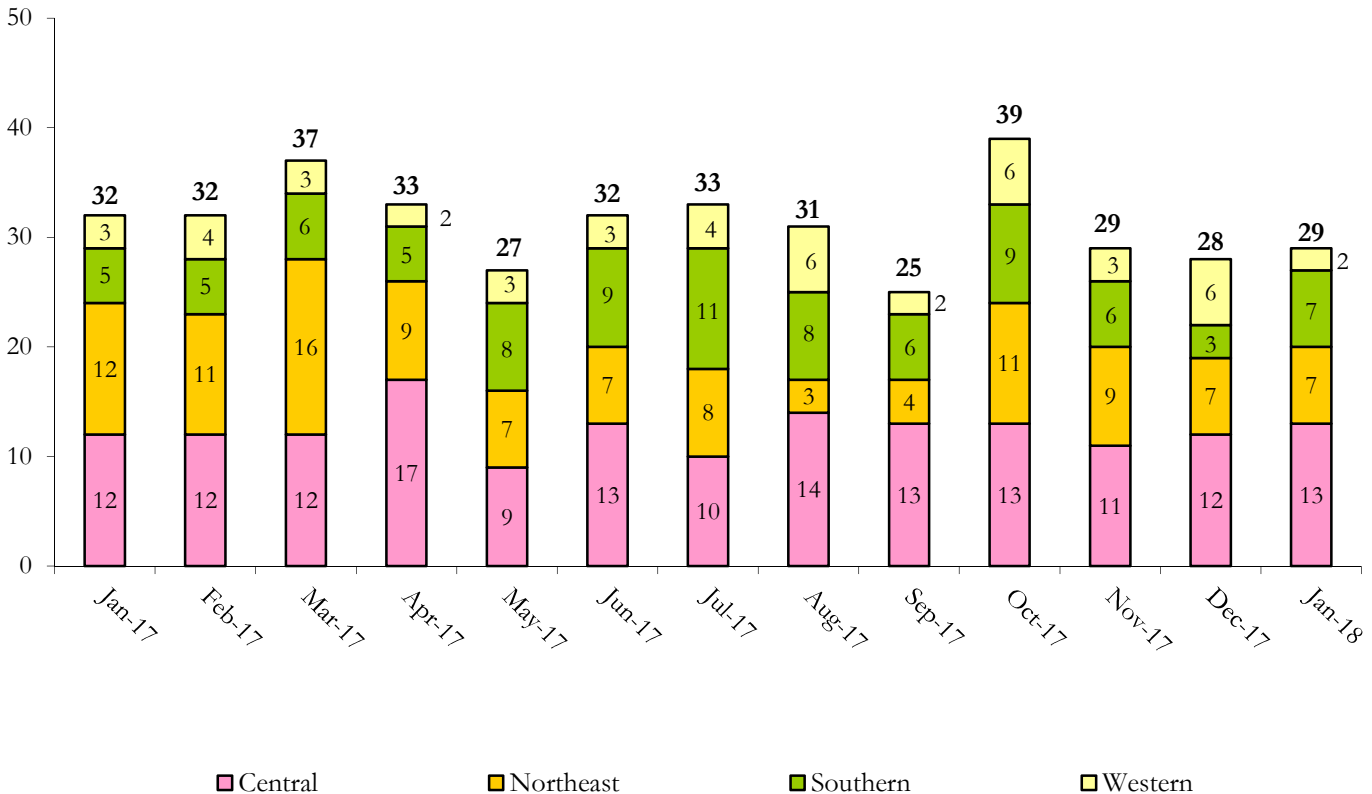
January 2018 DYS Population Report

IV. Commitment ADP and New Commitments

COMMITMENT ADP				
Region	Monthly		YTD	
	January	% Change	January	% Change from Prior FY
Central Region	263.2	0.6%	256.4	-2.6%
Northeast Region	173.4	-1.2%	179.3	-2.3%
Southern Region	148.6	-0.1%	147.4	7.8%
Western Region	65.1	3.4%	64.6	4.0%
Commitment ADP	650.3	0.2%	647.8	0.3%

NEW COMMITMENTS					
	FY 17-18		FY 16-17		% Change from last YTD
	January	YTD	January	YTD	
Central Region	13	96	12	61	57.4%
Northeast Region	7	53	12	82	-35.4%
Southern Region	7	55	5	45	22.2%
Western Region	2	29	3	25	16.0%
TOTAL	29	233	32	213	9.4%

Monthly New Commitments



January 2018 DYS Population Report

V. Parole Services

PAROLE ADP				
Region	Monthly	YTD		% Change from prev YTD
		FY 17-18	FY 16-17	
Central Region	74.5	70.8	94.5	-25.1%
Northeast Region	64.8	69.5	74.7	-7.0%
Southern Region	35.3	40.9	46.5	-12.1%
Western Region	25.5	26.1	19.9	31.2%
Total	200.1	207.3	235.6	-12.0%

Region	Parole Intakes		Parole Discharges		
	Monthly	YTD	Monthly	YTD	LOS
Central Region	15	80	14	75	6.2
Northeast Region	4	62	6	65	6.9
Southern Region	2	35	6	48	7.6
Western Region	3	27	7	24	6.3
Total	24	204	33	212	6.8

