

December 2017 FY 2017-2018 MONTHLY POPULATION REPORT

Prepared by the Division of Youth Services (DYS)
Data Management and Analysis
January 23rd



COLORADO

**Office of Children,
Youth & Families**

Division of Youth Services

December 2017

DYS Population Report

I. Summary Population Data	1
II. Detention ADP by Facility	2
III. Commitment Services	
A. State and Contract ADP by Facility	3
B. Community/Other Residential ADP by Facility	4
IV. Commitment ADP and New Commitments by Region	5
V. Parole Services	6

December 2017 DYS Population Report

I. Summary Population Data

DETAINED YOUTH

	December 2017		YTD	
	ADP	% change	ADP	LOS
State-Operated	247.2	-5.0%	256.4	16.3 days
Contracted Staff Secure	7.9	-9.3%	9.1	24.5 days
Total Detained	255.1	-5.1%	265.4	16.4 days

COMMITTED YOUTH

	December 2017		YTD	
	ADP	% change	ADP	LOS
Secure	399.0	2.4%	391.8	11.3 months
Staff Supervised	188.3	-0.4%	187.9	9.7 months
Community Residential	58.0	-11.5%	62.8	4.8 months
Other Residential	3.5	-38.3%	4.8	1.9 months
Total Committed Residential	648.8	-0.2%	647.3	20.1 months
<i>Committed Residential w/o Boulder</i>	<i>645.9</i>	<i>-0.4%</i>	<i>646.2</i>	<i>-</i>

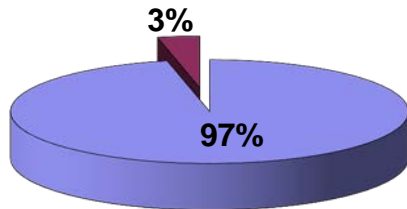
PAROLE YOUTH

	December 2017		YTD	
	ADP	% change	ADP	LOS
Parole	217.2	1.6%	210.1	6.7 months

TOTAL STATEWIDE ADP

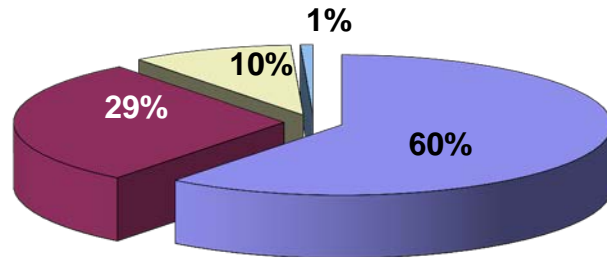
	December 2017		YTD	
	ADP	% change	ADP	LOS
DETENTION	255.1	-5.1%	265.4	16.4 days
COMMITMENT	648.8	-0.2%	647.3	20.1 months
PAROLE	217.2	1.6%	210.1	6.7 months
STATE TOTAL	1,121.0	-1.0%	1,122.8	N/A

**Detention ADP
Year to Date¹**



■ State-Operated ■ Contracted Staff Secure

**Commitment ADP
Year to Date¹**



■ Secure ■ Staff Supervised ■ Community Residential ■ Other Residential

¹ Due to rounding, totals may not add to 100%.

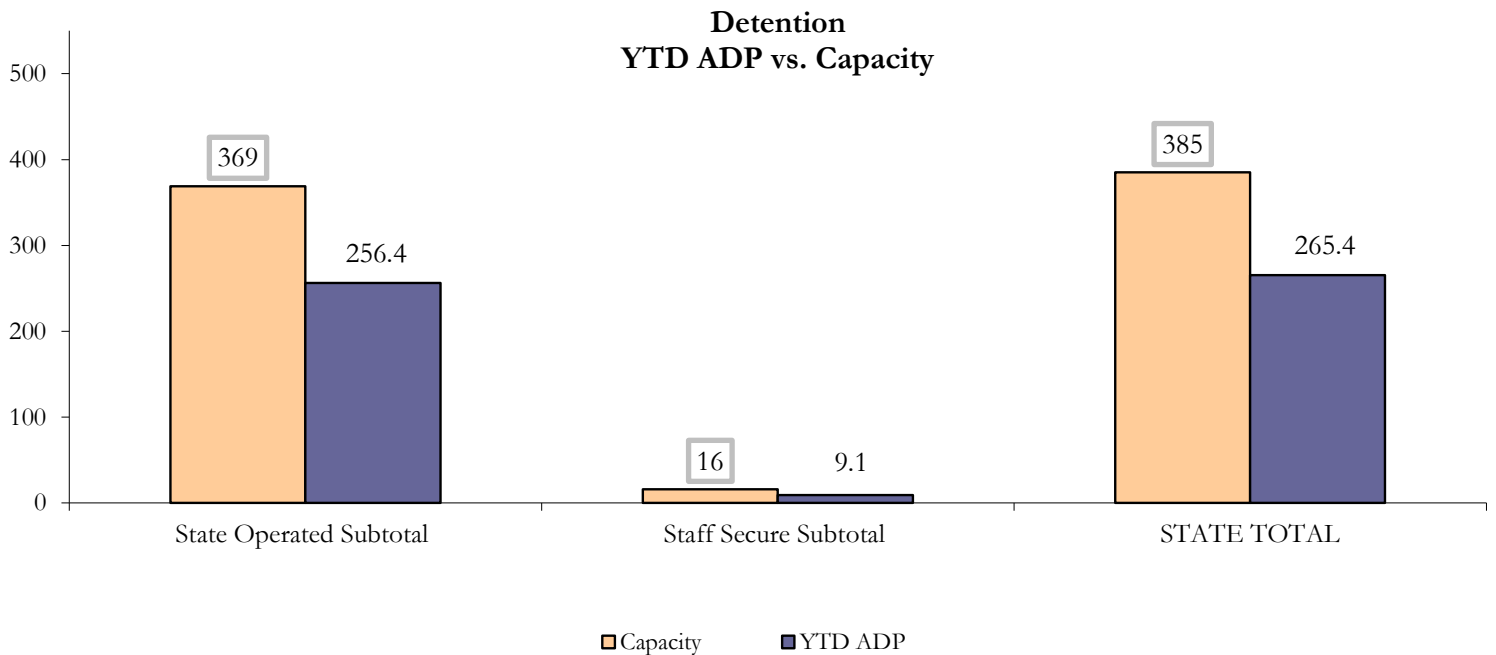
December 2017 DYS Population Report

II. Detention ADP by Facility

State Operated Detention							
Facility	Operating Capacity	Average Daily Population			New Admissions		LOS (days)
		Monthly	YTD	YTD % of Cap	Monthly	YTD	YTD
Adams	30	23.0	22.9	76.5%	43	265	15.5
Gilliam	64	45.9	42.1	65.7%	70	437	16.9
Grand Mesa	30	18.3	21.0	69.9%	25	194	17.4
Marvin Foote	62	44.6	39.5	63.6%	88	529	12.6
Mount View	41	22.1	29.1	71.1%	42	332	15.2
Platte Valley	64	28.3	37.9	59.3%	60	443	16.3
Pueblo	27	18.2	17.6	65.1%	26	217	14.0
Spring Creek	51	46.7	46.3	90.7%	48	354	23.1
State Subtotal	369	247.2	256.4	69.5%	402	2,771	16.3

Staff Secure Detention							
Facility	Operating Capacity	Average Daily Population			New Admissions		LOS (days)
		Monthly	YTD	YTD % of Cap	Monthly	YTD	YTD
Brown Center	3	0.0	0.0	0.0%	0	0	0.0
Robert DeNier	9	4.7	6.6	73.5%	3	41	25.6
Youthtrack San Luis Valley	4	3.3	2.5	61.6%	6	20	22.0
Staff Secure Subtotal	16	7.9	9.1	56.7%	9	61	24.5

STATEWIDE TOTAL							
	Operating Capacity	Average Daily Population			New Admissions		LOS (days)
		Monthly	YTD	YTD % of Cap	Monthly	YTD	YTD
Total Detention	385	255.1	265.4	68.9%	411	2,832	16.4



December 2017 DYS Population Report

III. Commitment Services

A. State and Contract ADP by Facility

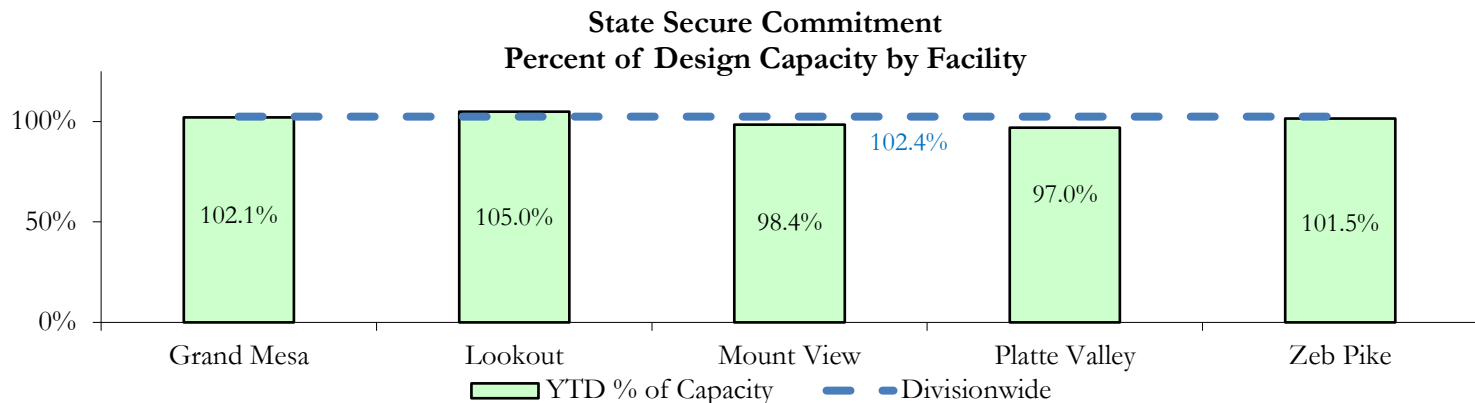
STATE SECURE				
Facility	ADP		Capacity	
	State Secure		Design	
	Monthly	YTD	Capacity	% of YTD
<i>Adams</i> ¹	0.1	0.2	-	-
<i>Gilliam</i> ¹	0.0	0.5	-	-
Grand Mesa	41.6	40.8	40	102.1%
Lookout	147.5	147.0	140	105.0%
<i>Marvin Foote</i> ¹	0.5	1.1	-	-
Mount View	72.2	64.0	65	98.4%
Platte Valley	54.7	53.3	55	97.0%
<i>Pueblo</i> ¹	0.0	0.0	-	-
<i>Spring Creek</i> ²	0.1	0.5	-	-
Zeb Pike	38.2	38.6	38	101.5%
Assessment Total	32.8	32.1	-	
Secure Total	321.9	314.0	-	
STATE SECURE TOTAL	354.8	346.1	338	102.4%

¹ Detention only facilities with commitment ADP due to committed youth being held in detention prior to transfer.

² Spring Creek was designated a detention only facility effective November 1, 2016 and no longer has commitment capacity allocation.

CONTRACT: PRIVATE SECURE + STAFF SUPERVISED

Facility/Program ²	ADP	
	Monthly	YTD
(Private Secure) Betty K. Marler Center	38.9	39.2
(Private Secure) Robert DeNier	5.4	6.5
Alternative Homes For Youth - Greeley	18.8	17.0
Gateway Residential Program - Delta	5.0	2.3
Hilltop (Residential Youth Services)	4.0	3.2
Jefferson Hills - Aurora	30.1	35.9
Ridge View	117.6	118.9
Southern Peaks	6.0	5.1
Third Way Center - Lowry	6.7	5.6
<i>Private Secure & Staff Supervised Subtotal</i>	232.6	233.6



² Programs with both Secure and Community placements are aggregated into one category until further TRAILS builds can allow for programs to register as multiple types.

December 2017 DYS Population Report

III. Commitment Services Continued

B. Community/Other Residential ADP by Facility¹

COMMUNITY RESIDENTIAL		
	<i>Monthly</i>	<i>YTD</i>
Ariel Clinical Services	0.3	1.4
Community Corrections: Comcor	0.0	0.1
Dale House Project	7.1	7.2
Denver Area Youth Services (DAYS)	1.2	2.9
Gateway Residential Program - Grand Junction	2.5	2.1
Griffith Centers for Children, Inc.	6.7	5.4
Job Corps	2.4	4.7
Kids Crossing	0.4	1.2
Mesa County Community Corrections	0.8	0.9
Mt Evans Qualifying House	9.4	10.3
Savio House	1.0	0.4
Synergy Administration	4.0	2.8
Third Way Center, Bannock	3.0	1.5
Third Way Center, Pontiac	5.2	7.0
Third Way Center, York	1.2	1.9
Third Way Center, Lincoln	4.1	3.1
Turning Point Center, Prospect	5.2	5.2
Turning Point, Mathews St.	3.6	4.8
<i>Community Subtotal</i>	<i>58.0</i>	<i>62.8</i>
<i>Private Secure + Staff Supervised + Community Subtotal</i>	<i>290.5</i>	<i>296.5</i>
OTHER RESIDENTIAL		
	<i>Monthly</i>	<i>YTD</i>
CMHI-Pueblo	1.0	0.7
Job Corps Parole Program (Federally funded)	1.0	1.7
Other Mental Health Facility	0.0	0.02
Residential Drug/Alcohol Program	0.0	0.3
Residential Mental Health Program	1.0	1.3
Shelter Care (short term)	0.0	0.1
<i>Other Residential Subtotal²</i>	<i>3.5</i>	<i>4.8</i>
RESIDENTIAL TOTAL		
	648.8	647.3

¹ Programs with both Secure and Community placements are aggregated into one category until further TRAILS builds can allow for programs to register as multiple types.

² Due to relatively few youth referred to these types of placements, the Other Residential Subtotals may not be the sum of individual placements; this is typically the result of rounding errors and the method by which ADP is calculated.

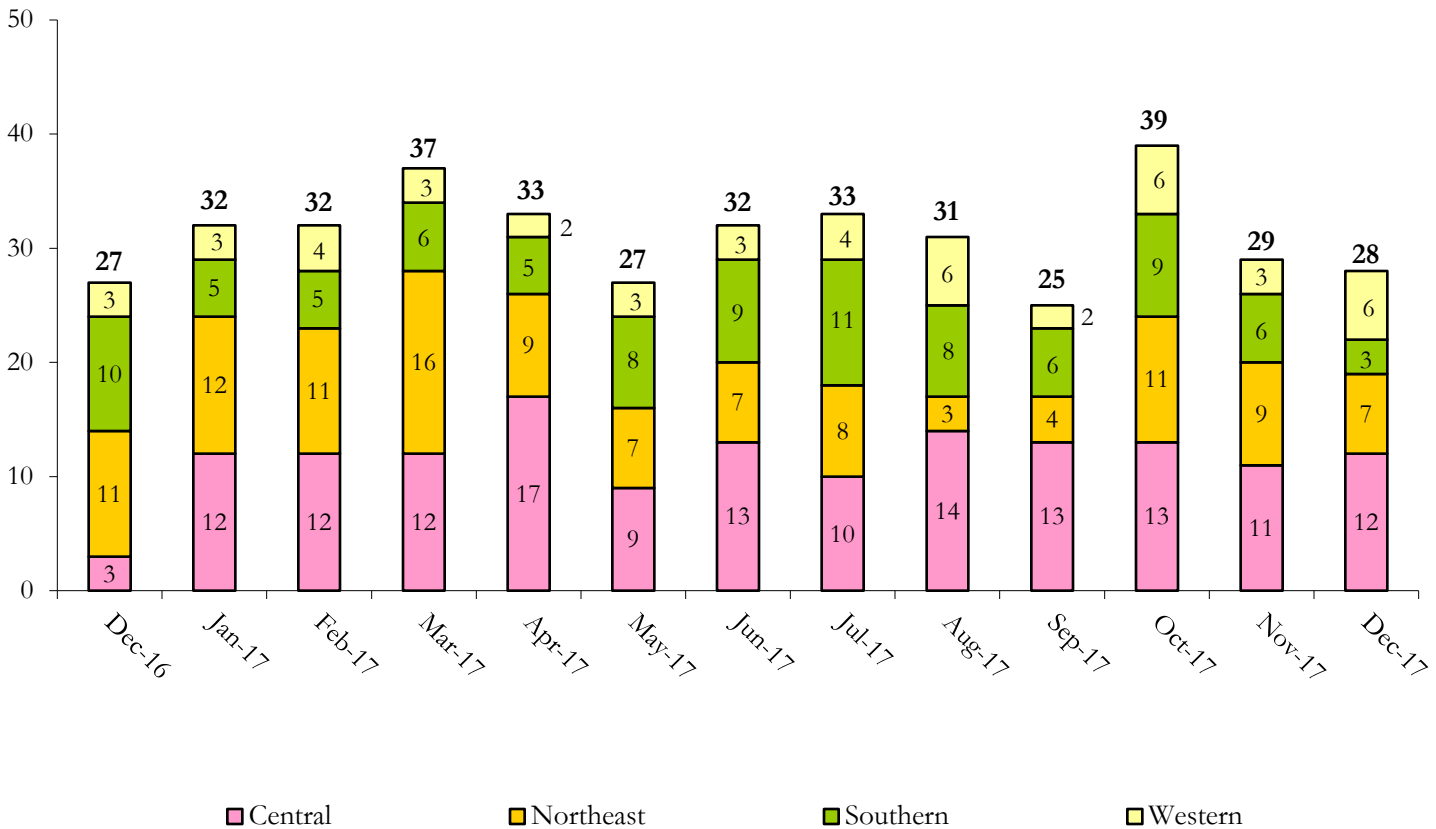
December 2017 DYS Population Report

IV. Commitment ADP and New Commitments

COMMITMENT ADP				
Region	Monthly		YTD	
	December	% Change	December	% Change from Prior FY
Central Region	261.6	3.0%	255.3	-4.0%
Northeast Region	175.5	-0.9%	180.4	-0.2%
Southern Region	148.7	-5.7%	147.2	7.0%
Western Region	63.0	3.0%	64.5	5.3%
Commitment ADP	648.8	-0.2%	647.3	0.3%

NEW COMMITMENTS					
	FY 17-18		FY 16-17		% Change from last YTD
	December	YTD	December	YTD	
Central Region	12	82	3	48	70.8%
Northeast Region	7	45	11	70	-35.7%
Southern Region	3	48	10	40	20.0%
Western Region	6	27	3	22	22.7%
TOTAL	28	202	27	180	12.2%

Monthly New Commitments



December 2017 DYS Population Report

V. Parole Services

PAROLE ADP				
Region	Monthly	YTD		% Change from prev YTD
		FY 17-18	FY 16-17	
Central Region	74.1	71.3	95.7	-25.6%
Northeast Region	73.7	70.7	76.1	-7.0%
Southern Region	40.6	41.8	46.2	-9.5%
Western Region	28.8	26.2	20.3	29.4%
Total	217.2	210.1	238.3	-11.9%

Region	Parole Intakes		Parole Discharges		LOS
	Monthly	YTD	Monthly	YTD	
Central Region	10	65	6	60	6.1
Northeast Region	10	57	9	51	6.8
Southern Region	7	33	9	42	7.7
Western Region	1	24	3	17	6.0
Total	28	179	27	170	6.7

