

November 2017 FY 2017-2018 MONTHLY POPULATION REPORT

Prepared by the Division of Youth Services (DYS)
Data Management and Analysis
December 26th



COLORADO

**Office of Children,
Youth & Families**

Division of Youth Services

November 2017

DYS Population Report

I. Summary Population Data	1
II. Detention ADP by Facility	2
III. Commitment Services	
A. State and Contract ADP by Facility	3
B. Community/Other Residential ADP by Facility	4
IV. Commitment ADP and New Commitments by Region	5
V. Parole Services	6

November 2017 DYS Population Report

I. Summary Population Data

DETAINED YOUTH

	November 2017		YTD	
	ADP	% change	ADP	LOS
State-Operated	260.1	-4.5%	257.6	16.2 days
Contracted Staff Secure	8.7	27.2%	9.3	25.5 days
Total Detained	268.8	-3.8%	266.9	16.4 days

COMMITTED YOUTH

	November 2017		YTD	
	ADP	% change	ADP	LOS
Secure	389.7	0.6%	390.3	11.7 months
Staff Supervised	189.0	-0.8%	187.9	10.0 months
Community Residential	65.5	-2.3%	63.7	4.7 months
Other Residential	5.7	279.2%	5.9	1.9 months
Total Committed Residential	649.8	0.5%	647.8	20.7 months
<i>Committed Residential w/o Boulder</i>	<i>648.6</i>	<i>0.5%</i>	<i>647.0</i>	<i>-</i>

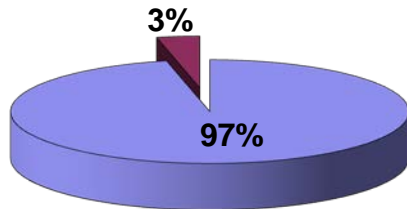
PAROLE YOUTH

	November 2017		YTD	
	ADP	% change	ADP	LOS
Parole	213.7	0.0%	205.0	6.5 months

TOTAL STATEWIDE ADP

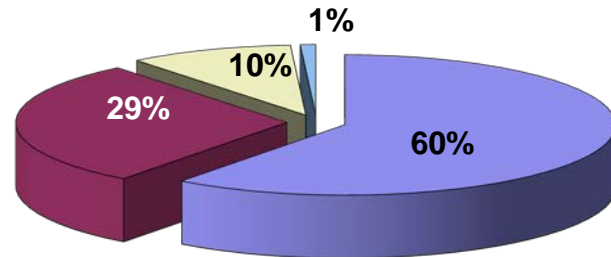
	November 2017		YTD	
	ADP	% change	ADP	LOS
DETENTION	268.8	-3.8%	266.9	16.4 days
COMMITMENT	649.8	0.5%	647.8	20.7 months
PAROLE	213.7	0.0%	205.0	6.5 months
STATE TOTAL	1,132.3	-0.6%	1,119.8	N/A

**Detention ADP
Year to Date¹**



■ State-Operated ■ Contracted Staff Secure

**Commitment ADP
Year to Date¹**



■ Secure ■ Staff Supervised ■ Community Residential ■ Other Residential

¹ Due to rounding, totals may not add to 100%.

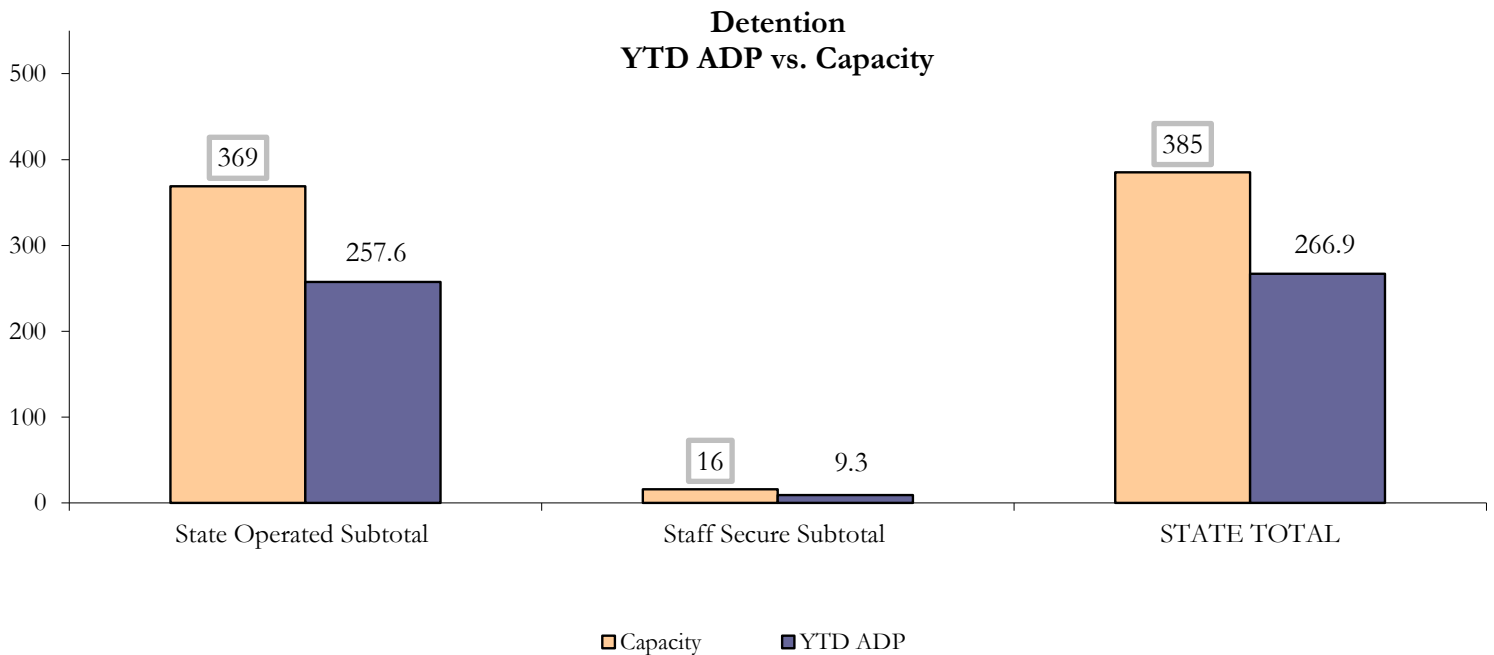
November 2017 DYS Population Report

II. Detention ADP by Facility

State Operated Detention							
Facility	Operating Capacity	Average Daily Population			New Admissions		LOS (days)
		Monthly	YTD	YTD % of Cap	Monthly	YTD	YTD
Adams	30	21.2	22.9	76.5%	42	222	16.2
Gilliam	64	44.3	41.3	64.5%	81	367	16.2
Grand Mesa	30	24.2	21.5	71.7%	41	169	17.0
Marvin Foote	62	45.0	38.7	62.5%	91	441	12.4
Mount View	41	23.1	30.4	74.2%	48	289	16.0
Platte Valley	64	37.1	39.1	61.0%	69	383	16.1
Pueblo	27	17.9	17.5	64.7%	30	191	13.6
Spring Creek	51	47.3	46.2	90.5%	58	306	22.9
State Subtotal	369	260.1	257.6	69.8%	460	2,368	16.2

Staff Secure Detention							
Facility	Operating Capacity	Average Daily Population			New Admissions		LOS (days)
		Monthly	YTD	YTD % of Cap	Monthly	YTD	YTD
Brown Center	3	0.0	0.0	0.0%	0	0	0.0
Robert DeNier	9	5.8	7.0	77.8%	5	38	26.9
Youthtrack San Luis Valley	4	3.0	2.3	57.6%	1	14	21.4
Staff Secure Subtotal	16	8.7	9.3	58.2%	6	52	25.5

STATEWIDE TOTAL							
	Operating Capacity	Average Daily Population			New Admissions		LOS (days)
		Monthly	YTD	YTD % of Cap	Monthly	YTD	YTD
Total Detention	385	268.8	266.9	69.3%	466	2,420	16.4



November 2017 DYS Population Report

III. Commitment Services

A. State and Contract ADP by Facility

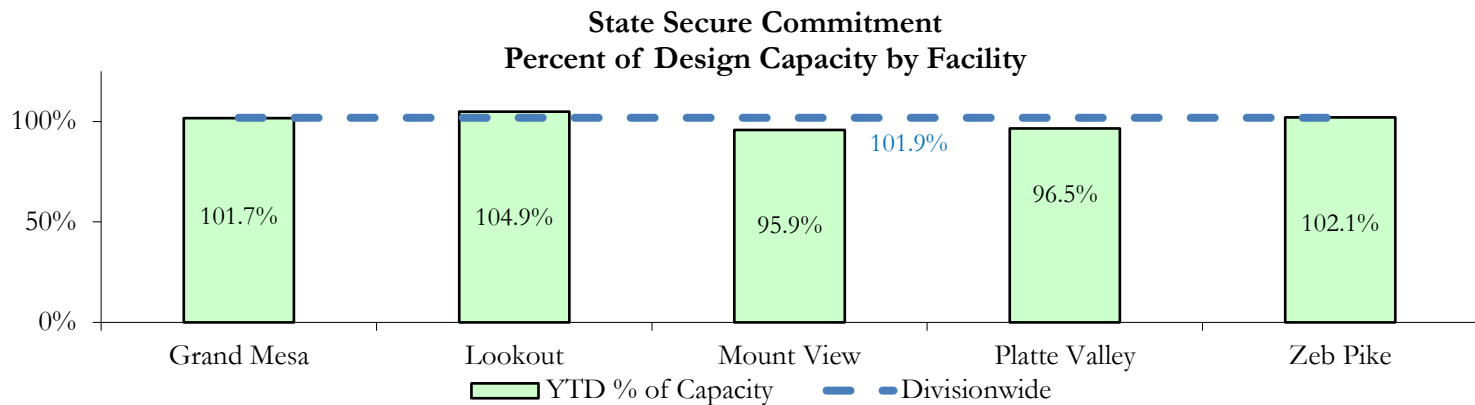
STATE SECURE				
Facility	ADP		Capacity	
	State Secure		Design	
	Monthly	YTD	Capacity	% of YTD
<i>Adams</i> ¹	0.1	0.2	-	-
<i>Gilliam</i> ¹	0.3	0.6	-	-
Grand Mesa	37.1	40.7	40	101.7%
Lookout	147.5	146.8	140	104.9%
<i>Marvin Foote</i> ¹	0.6	1.2	-	-
Mount View	66.9	62.3	65	95.9%
Platte Valley	54.1	53.1	55	96.5%
<i>Pueblo</i> ¹	0.0	0.0	-	-
<i>Spring Creek</i> ²	0.0	0.5	-	-
Zeb Pike	38.8	38.8	38	102.1%
Assessment Total	32.1	32.1	-	
Secure Total	313.3	312.2	-	
STATE SECURE TOTAL	345.3	344.3	338	101.9%

¹ Detention only facilities with commitment ADP due to committed youth being held in detention prior to transfer.

² Spring Creek was designated a detention only facility effective November 1, 2016 and no longer has commitment capacity allocation.

CONTRACT: PRIVATE SECURE + STAFF SUPERVISED

Facility/Program ²	ADP	
	Monthly	YTD
(Private Secure) Betty K. Marler Center	37.9	39.3
(Private Secure) Robert DeNier	6.4	6.7
Alternative Homes For Youth - Greeley	17.8	16.6
Gateway Residential Program - Delta	2.6	1.8
Hilltop (Residential Youth Services)	3.9	3.0
Jefferson Hills - Aurora	33.3	37.0
Ridge View	118.2	119.1
Southern Peaks	6.3	4.9
Third Way Center - Lowry	6.8	5.3
<i>Private Secure & Staff Supervised Subtotal</i>	233.3	233.9



² Programs with both Secure and Community placements are aggregated into one category until further TRAILS builds can allow for programs to register as multiple types.

November 2017

DYS Population Report

III. Commitment Services Continued

B. Community/Other Residential ADP by Facility¹

COMMUNITY RESIDENTIAL		
	<i>Monthly</i>	<i>YTD</i>
Ariel Clinical Services	1.1	1.6
Dale House Project	6.8	7.2
Denver Area Youth Services (DAYS)	3.0	3.3
Gateway Residential Program - Grand Junction	3.0	2.1
Griffith Centers for Children, Inc.	6.0	5.1
Job Corps	4.5	5.2
Kids Crossing	1.0	1.4
Mesa County Community Corrections	0.0	0.9
Mt Evans Qualifying House	11.6	10.5
Savio House	1.0	0.2
Synergy Administration	4.0	2.6
Third Way Center, Bannock	2.1	1.2
Third Way Center, Pontiac	5.0	7.3
Third Way Center, York	1.5	2.0
Third Way Center, Lincoln	4.5	2.9
Turning Point Center, Prospect	5.5	5.1
Turning Point, Mathews St.	4.9	5.0
<i>Community Subtotal</i>	<i>65.5</i>	<i>63.7</i>
<i>Private Secure + Staff Supervised + Community Subtotal</i>	<i>298.8</i>	<i>297.5</i>
OTHER RESIDENTIAL		
	<i>Monthly</i>	<i>YTD</i>
CMHI-Pueblo	0.0	0.6
Job Corps Parole Program (Federally funded)	1.9	1.8
Other Mental Health Facility	0.0	0.02
Residential Drug/Alcohol Program	0.7	0.4
Residential Mental Health Program	1.0	1.4
Shelter Care (short term)	0.0	0.1
<i>Other Residential Subtotal²</i>	<i>5.7</i>	<i>5.9</i>
RESIDENTIAL TOTAL		
	649.8	647.8

¹ Programs with both Secure and Community placements are aggregated into one category until further TRAILS builds can allow for programs to register as multiple types.

² Due to relatively few youth referred to these types of placements, the Other Residential Subtotals may not be the sum of individual placements; this is typically the result of rounding errors and the method by which ADP is calculated.

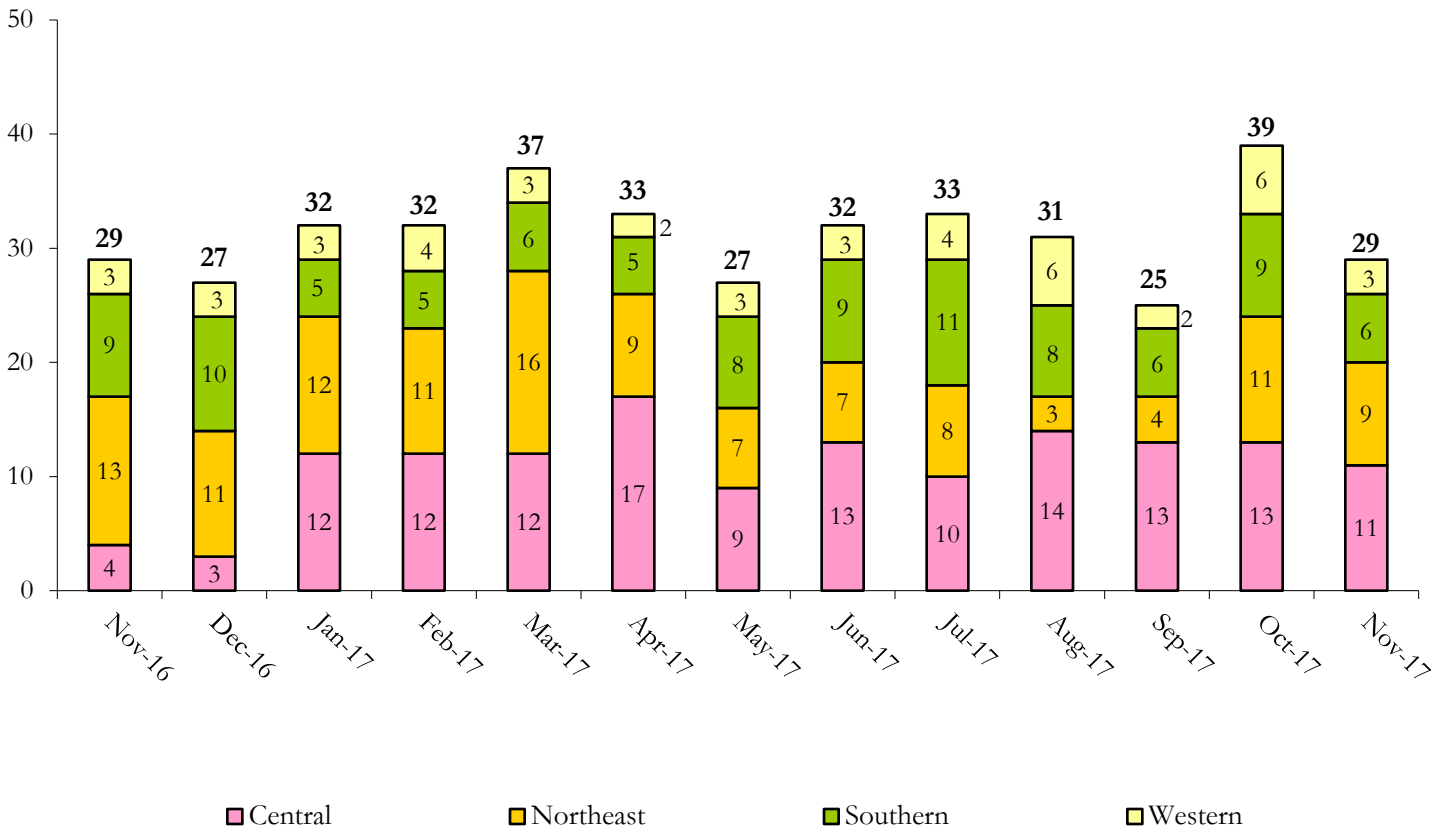
November 2017 DYS Population Report

IV. Commitment ADP and New Commitments

COMMITMENT ADP				
Region	Monthly		YTD	
	November	% Change	November	% Change from Prior FY
Central Region	253.9	0.2%	254.8	-5.1%
Northeast Region	177.0	0.0%	181.2	0.8%
Southern Region	157.7	4.4%	147.0	7.1%
Western Region	61.2	-5.8%	64.8	5.6%
Commitment ADP	649.8	0.5%	647.8	0.1%

NEW COMMITMENTS					
	FY 17-18		FY 16-17		% Change from last YTD
	November	YTD	November	YTD	
Central Region	11	66	4	45	46.7%
Northeast Region	9	36	13	59	-39.0%
Southern Region	6	45	9	30	50.0%
Western Region	3	21	3	18	16.7%
TOTAL	29	168	29	152	10.5%

Monthly New Commitments



November 2017 DYS Population Report

V. Parole Services

PAROLE ADP				
Region	Monthly	YTD		% Change from prev YTD
		FY 17-18	FY 16-17	
Central Region	68.7	69.2	99.6	-30.5%
Northeast Region	72.8	69.5	78.7	-11.7%
Southern Region	45.4	42.0	45.9	-8.6%
Western Region	26.8	24.3	20.7	17.6%
Total	213.7	205.0	244.9	-16.3%

Parole Intakes			Parole Discharges		
Region	Monthly	YTD	Monthly	YTD	LOS
Central Region	10	55	11	53	6.2
Northeast Region	5	45	8	41	6.3
Southern Region	6	26	6	30	7.7
Western Region	3	23	2	14	6.0
Total	24	149	27	138	6.5

