

October 2017 FY 2017-2018 MONTHLY POPULATION REPORT

Prepared by the Division of Youth Services (DYS)
Data Management and Analysis
November 17th



COLORADO

**Office of Children,
Youth & Families**

Division of Youth Services

October 2017 DYS Population Report

I. Summary Population Data	1
II. Detention ADP by Facility	2
III. Commitment Services	
A. State and Contract ADP by Facility	3
B. Community/Other Residential ADP by Facility	4
IV. Commitment ADP and New Commitments by Region	5
V. Parole Services	6

October 2017 DYS Population Report

I. Summary Population Data

DETAINED YOUTH

	October 2017		YTD	
	ADP	% change	ADP	LOS
State-Operated	272.5	3.5%	258.3	16.2 days
Contracted Staff Secure	6.9	-28.7%	9.5	25.3 days
Total Detained	279.3	2.4%	267.8	16.5 days

COMMITTED YOUTH

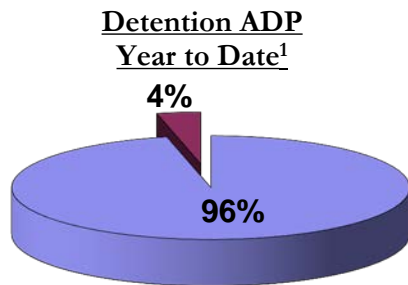
	October 2017		YTD	
	ADP	% change	ADP	LOS
Secure	387.3	0.0%	391.4	12.2 months
Staff Supervised	190.6	3.1%	187.2	10.4 months
Community Residential	67.1	4.2%	63.4	4.5 months
Other Residential	1.5	-64.7%	4.1	1.7 months
Total Committed Residential	646.4	0.9%	646.2	21.4 months
<i>Committed Residential w/o Boulder</i>	<i>645.4</i>	<i>0.9%</i>	<i>645.5</i>	<i>-</i>

PAROLE YOUTH

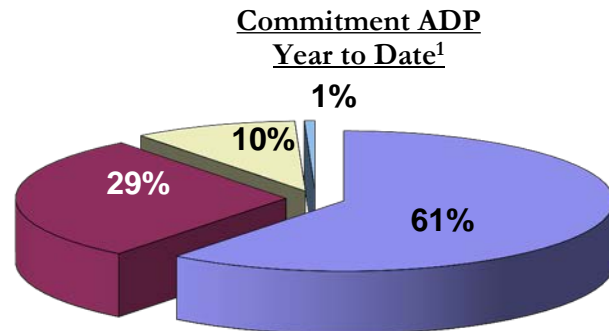
	October 2017		YTD	
	ADP	% change	ADP	LOS
Parole	213.7	0.3%	205.0	6.6 months

TOTAL STATEWIDE ADP

	October 2017		YTD	
	ADP	% change	ADP	LOS
DETENTION	279.3	2.4%	267.8	16.5 days
COMMITMENT	646.4	0.9%	646.2	21.4 months
PAROLE	213.7	0.3%	205.0	6.6 months
STATE TOTAL	1,139.5	1.1%	1,119.0	<i>N/A</i>



■ State-Operated ■ Contracted Staff Secure



■ Secure ■ Staff Supervised ■ Community Residential ■ Other Residential

¹ Due to rounding, totals may not add to 100%.

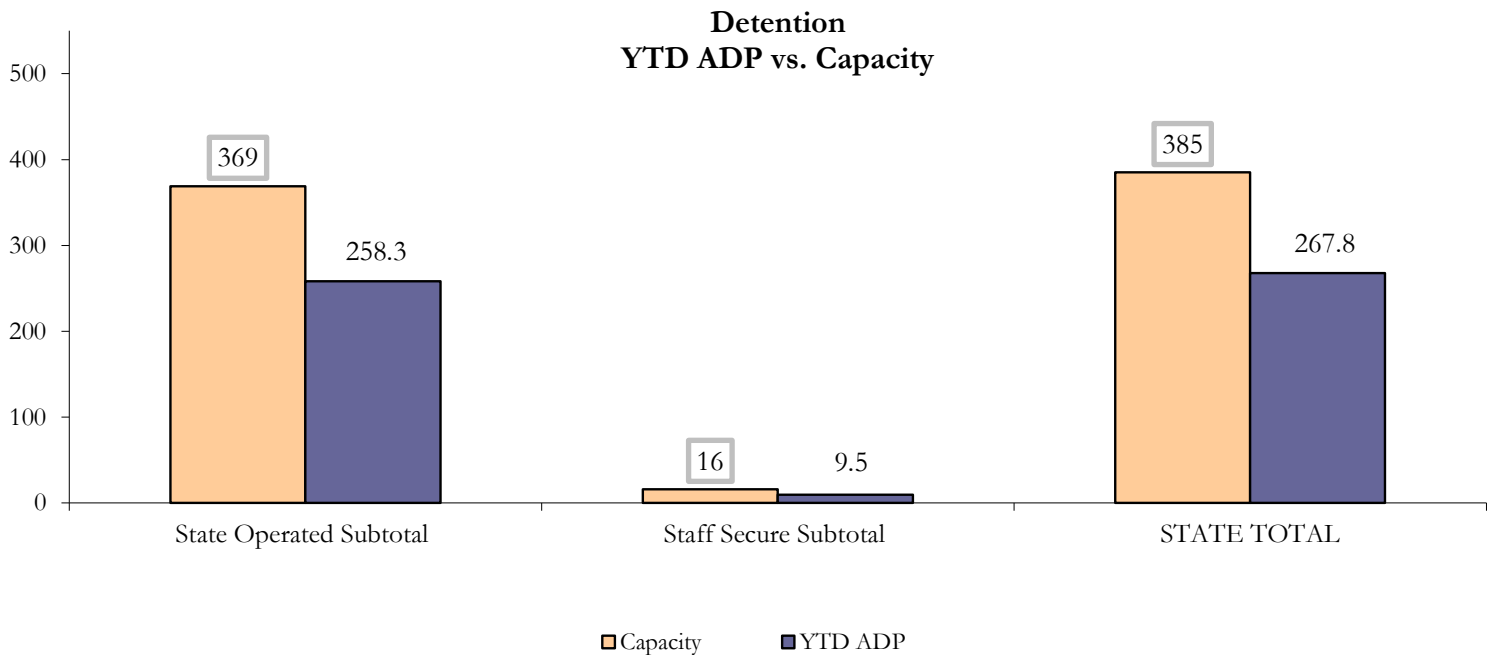
October 2017 DYS Population Report

II. Detention ADP by Facility

State Operated Detention							
Facility	Operating Capacity	Average Daily Population			New Admissions		LOS (days)
		Monthly	YTD	YTD % of Cap	Monthly	YTD	YTD
Adams	30	24.8	23.4	77.9%	46	180	17.1
Gilliam	64	45.3	40.6	63.4%	77	286	16.2
Grand Mesa	30	19.9	20.9	69.5%	32	128	15.9
Marvin Foote	62	43.8	38.1	61.5%	90	351	12.5
Mount View	41	30.9	32.2	78.6%	58	241	16.4
Platte Valley	64	41.8	39.9	62.4%	91	316	16.2
Pueblo	27	20.2	17.4	64.3%	36	161	13.0
Spring Creek	51	45.8	45.9	90.0%	70	248	23.2
State Subtotal	369	272.5	258.3	70.0%	500	1,911	16.2

Staff Secure Detention							
Facility	Operating Capacity	Average Daily Population			New Admissions		LOS (days)
		Monthly	YTD	YTD % of Cap	Monthly	YTD	YTD
Brown Center	3	0.0	0.0	0.0%	0	0	0.0
Robert DeNier	9	5.8	7.3	81.2%	10	33	26.5
Youthtrack San Luis Valley	4	1.1	2.1	53.6%	4	13	21.9
Staff Secure Subtotal	16	6.9	9.5	59.1%	14	46	25.3

STATEWIDE TOTAL							
	Operating Capacity	Average Daily Population			New Admissions		LOS (days)
		Monthly	YTD	YTD % of Cap	Monthly	YTD	YTD
Total Detention	385	279.3	267.8	69.5%	514	1,957	16.5



October 2017 DYS Population Report

III. Commitment Services

A. State and Contract ADP by Facility

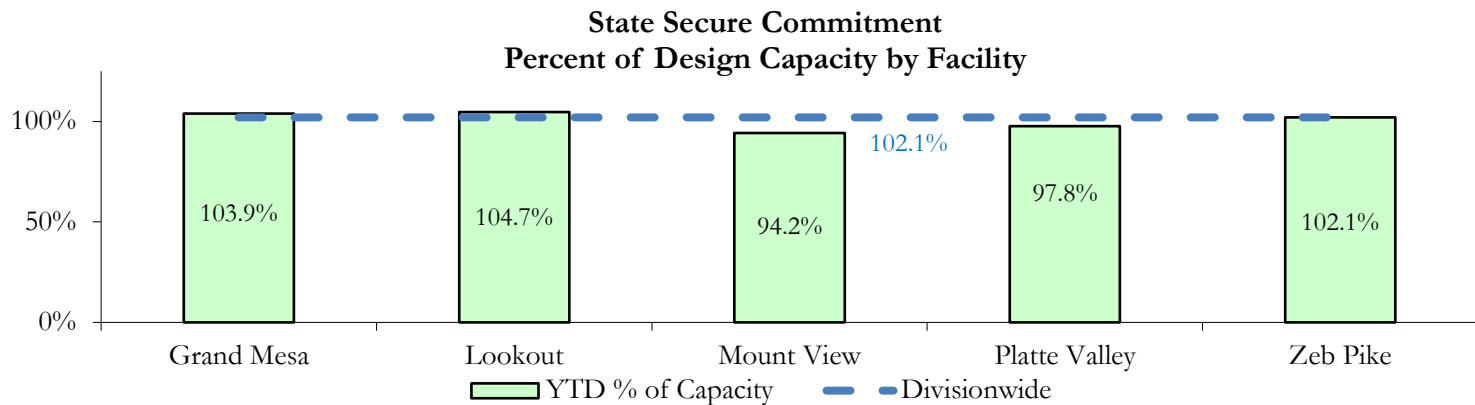
STATE SECURE				
Facility	ADP		Capacity	
	State Secure		Design	
	Monthly	YTD	Capacity	% of YTD
Adams ¹	0.5	0.3	-	-
Gilliam ¹	1.3	0.7	-	-
Grand Mesa	41.5	41.6	40	103.9%
Lookout	146.2	146.6	140	104.7%
Marvin Foote ¹	1.5	1.4	-	-
Mount View	58.3	61.2	65	94.2%
Platte Valley	53.9	53.8	55	97.8%
Pueblo ¹	0.0	0.0	-	-
Spring Creek ²	0.6	0.7	-	-
Zeb Pike	38.8	38.8	38	102.1%
Assessment Total	36.2	32.1	-	
Secure Total	306.5	312.9	-	
STATE SECURE TOTAL	342.7	345.0	338	102.1%

¹ Detention only facilities with commitment ADP due to committed youth being held in detention prior to transfer.

² Spring Creek was designated a detention only facility effective November 1, 2016 and no longer has commitment capacity allocation.

CONTRACT: PRIVATE SECURE + STAFF SUPERVISED

Facility/Program ²	ADP	
	Monthly	YTD
(Private Secure) Betty K. Marler Center	37.5	39.7
(Private Secure) Robert DeNier	7.1	6.8
Alternative Homes For Youth - Greeley	16.9	16.4
Gateway Residential Program - Delta	2.0	1.6
Hilltop (Residential Youth Services)	2.6	2.8
Jefferson Hills - Aurora	36.9	38.0
Ridge View	120.8	119.0
Southern Peaks	5.0	4.6
Third Way Center - Lowry	6.3	4.9
<i>Private Secure & Staff Supervised Subtotal</i>	235.1	233.7



² Programs with both Secure and Community placements are aggregated into one category until further TRAILS builds can allow for programs to register as multiple types.

October 2017

DYS Population Report

III. Commitment Services Continued

B. Community/Other Residential ADP by Facility¹

COMMUNITY RESIDENTIAL		
	<i>Monthly</i>	<i>YTD</i>
Ariel Clinical Services	2.0	1.7
Dale House Project	7.5	7.5
Denver Area Youth Services (DAYS)	2.9	3.4
Gateway Residential Program - Grand Junction	2.4	1.8
Griffith Centers for Children, Inc.	6.0	4.9
Job Corps	5.5	5.3
Kids Crossing	0.9	1.4
Mesa County Community Corrections	0.4	1.2
Mt Evans Qualifying House	11.4	10.2
Savio House	0.2	0.1
Synergy Administration	3.1	2.2
Third Way Center, Bannock	1.0	1.0
Third Way Center, Pontiac	8.8	8.1
Third Way Center, York	2.2	2.1
Third Way Center, Lincoln	1.3	2.4
Turning Point Center, Prospect	6.4	5.0
Turning Point, Mathews St.	5.0	5.0
<i>Community Subtotal</i>	<i>67.1</i>	<i>63.4</i>
<i>Private Secure + Staff Supervised + Community Subtotal</i>	<i>302.3</i>	<i>297.1</i>
OTHER RESIDENTIAL		
	<i>Monthly</i>	<i>YTD</i>
CMHI-Pueblo	0.0	0.8
Job Corps Parole Program (Federally funded)	1.4	1.8
Other Mental Health Facility	0.0	0.03
Residential Drug/Alcohol Program	1.0	0.3
Residential Mental Health Program	1.3	1.6
Shelter Care (short term)	0.0	0.2
<i>Other Residential Subtotal²</i>	<i>1.5</i>	<i>4.1</i>
RESIDENTIAL TOTAL		
	646.4	646.2

¹ Programs with both Secure and Community placements are aggregated into one category until further TRAILS builds can allow for programs to register as multiple types.

² Due to relatively few youth referred to these types of placements, the Other Residential Subtotals may not be the sum of individual placements; this is typically the result of rounding errors and the method by which ADP is calculated.

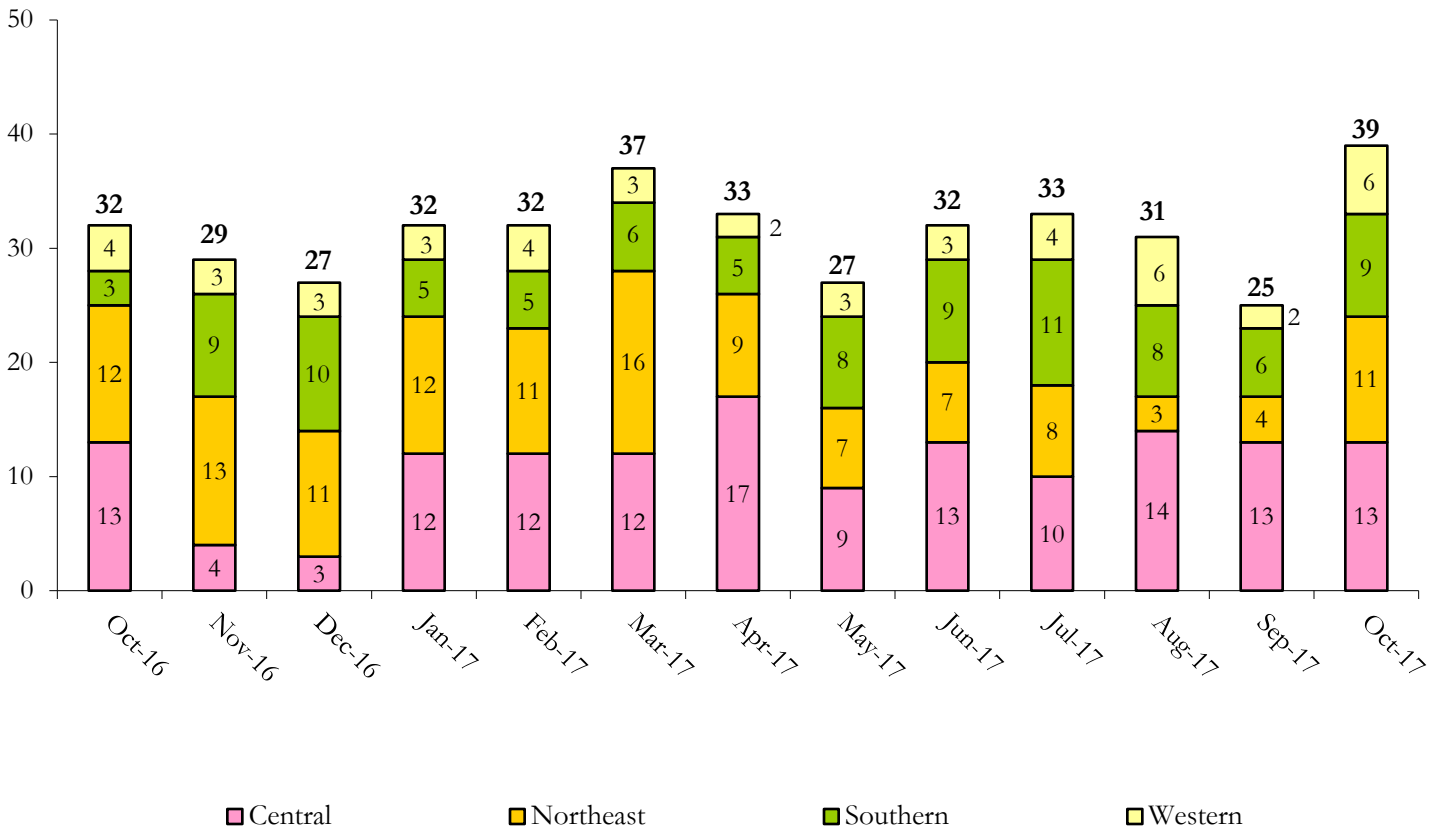
October 2017 DYS Population Report

IV. Commitment ADP and New Commitments

COMMITMENT ADP				
Region	Monthly		YTD	
	October	% Change	October	% Change from Prior FY
Central Region	253.3	0.6%	253.8	-6.0%
Northeast Region	177.0	1.4%	182.2	1.5%
Southern Region	151.1	2.0%	143.5	3.0%
Western Region	65.0	-2.0%	66.7	9.2%
Commitment ADP	646.4	0.9%	646.2	-0.6%

NEW COMMITMENTS					
	FY 17-18		FY 16-17		% Change from last YTD
	October	YTD	October	YTD	
Central Region	13	52	13	41	26.8%
Northeast Region	11	27	12	45	-40.0%
Southern Region	9	38	3	21	81.0%
Western Region	6	18	4	15	20.0%
TOTAL	39	135	32	122	10.7%

Monthly New Commitments



October 2017 DYS Population Report

V. Parole Services

PAROLE ADP				
Region	Monthly	YTD		% Change from prev YTD
		FY 17-18	FY 16-17	
Central Region	68.7	69.2	99.6	-30.5%
Northeast Region	72.8	69.5	78.7	-11.7%
Southern Region	45.4	42.0	45.9	-8.6%
Western Region	26.8	24.3	20.7	17.6%
Total	213.7	205.0	244.9	-16.3%

Region	Parole Intakes		Parole Discharges		LOS
	Monthly	YTD	Monthly	YTD	
Central Region	9	44	11	42	6.5
Northeast Region	6	40	6	32	6.5
Southern Region	2	20	9	24	7.3
Western Region	3	20	4	12	6.0
Total	20	124	30	110	6.6

Monthly Parole ADP

