

September 2017 FY 2017-2018 MONTHLY POPULATION REPORT

Prepared by the Division of Youth Services (DYS)
Data Management and Analysis
October 23rd



COLORADO

**Office of Children,
Youth & Families**

Division of Youth Services

September 2017

DYS Population Report

I. Summary Population Data	1
II. Detention ADP by Facility	2
III. Commitment Services	
A. State and Contract ADP by Facility	3
B. Community/Other Residential ADP by Facility	4
IV. Commitment ADP and New Commitments by Region	5
V. Parole Services	6

September 2017 DYS Population Report

I. Summary Population Data

DETAINED YOUTH

	September 2017		YTD	
	ADP	% change	ADP	LOS
State-Operated	263.2	5.8%	254.2	15.3 days
Contracted Staff Secure	9.6	-10.0%	10.3	25.4 days
Total Detained	272.9	5.1%	264.5	15.5 days

COMMITTED YOUTH

	September 2017		YTD	
	ADP	% change	ADP	LOS
Secure	387.3	-1.7%	391.5	12.9 months
Staff Supervised	184.9	-0.7%	186.1	10.6 months
Community Residential	64.4	7.1%	62.4	4.4 months
Other Residential	4.2	-33.6%	6.0	1.2 months
Total Committed Residential	640.8	-0.9%	646.0	22.2 months
<i>Committed Residential w/o Boulder</i>	<i>639.8</i>	<i>-1.0%</i>	<i>645.4</i>	<i>-</i>

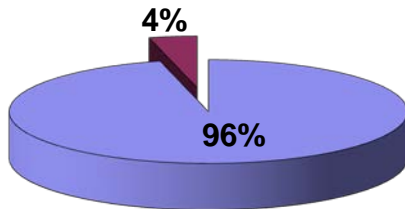
PAROLE YOUTH

	September 2017		YTD	
	ADP	% change	ADP	LOS
Parole	213.0	6.4%	201.1	6.7 months

TOTAL STATEWIDE ADP

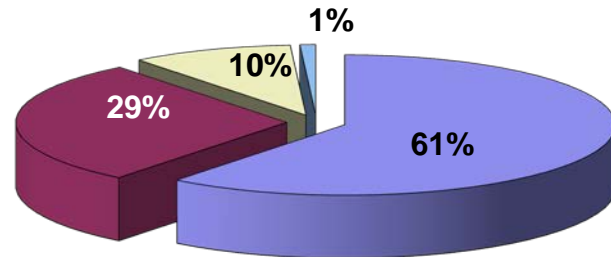
	September 2017		YTD	
	ADP	% change	ADP	LOS
DETENTION	272.9	5.1%	264.5	15.5 days
COMMITMENT	640.8	-0.9%	646.0	22.2 months
PAROLE	213.0	6.4%	201.1	6.7 months
STATE TOTAL	1,126.7	1.8%	1,111.7	N/A

**Detention ADP
Year to Date¹**



■ State-Operated ■ Contracted Staff Secure

**Commitment ADP
Year to Date¹**



■ Secure ■ Staff Supervised ■ Community Residential ■ Other Residential

¹ Due to rounding, totals may not add to 100%.

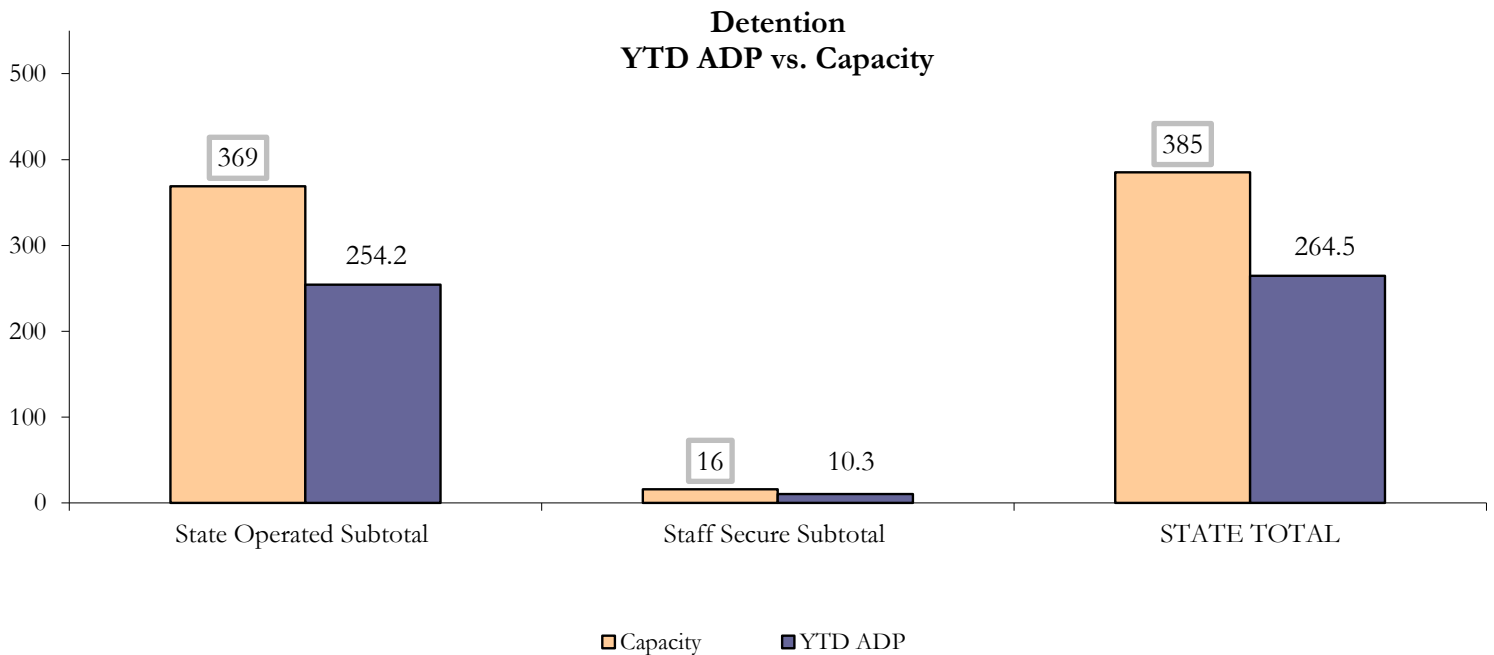
September 2017 DYS Population Report

II. Detention ADP by Facility

State Operated Detention							
Facility	Operating Capacity	Average Daily Population			New Admissions		LOS (days)
		Monthly	YTD	YTD % of Cap	Monthly	YTD	YTD
Adams	30	24.7	23.1	76.9%	41	135	15.7
Gilliam	64	39.2	39.0	60.9%	75	209	15.4
Grand Mesa	30	22.5	21.2	70.6%	39	96	15.9
Marvin Foote	62	40.0	36.2	58.4%	81	261	12.5
Mount View	41	36.0	32.7	79.8%	67	183	14.9
Platte Valley	64	37.8	39.5	61.7%	65	226	14.9
Pueblo	27	17.1	16.4	60.7%	38	125	12.7
Spring Creek	51	46.0	46.2	90.6%	61	178	21.5
State Subtotal	369	263.2	254.2	68.9%	467	1,413	15.3

Staff Secure Detention							
Facility	Operating Capacity	Average Daily Population			New Admissions		LOS (days)
		Monthly	YTD	YTD % of Cap	Monthly	YTD	YTD
Brown Center	3	0.0	0.0	0.0%	0	0	0.0
Robert DeNier	9	8.2	7.8	86.9%	8	23	25.2
Youthtrack San Luis Valley	4	1.4	2.5	62.7%	2	9	25.7
Staff Secure Subtotal	16	9.6	10.3	64.5%	10	32	25.4

STATEWIDE TOTAL							
	Operating Capacity	Average Daily Population			New Admissions		LOS (days)
		Monthly	YTD	YTD % of Cap	Monthly	YTD	YTD
Total Detention	385	272.9	264.5	68.7%	477	1,445	15.5



September 2017 DYS Population Report

III. Commitment Services

A. State and Contract ADP by Facility

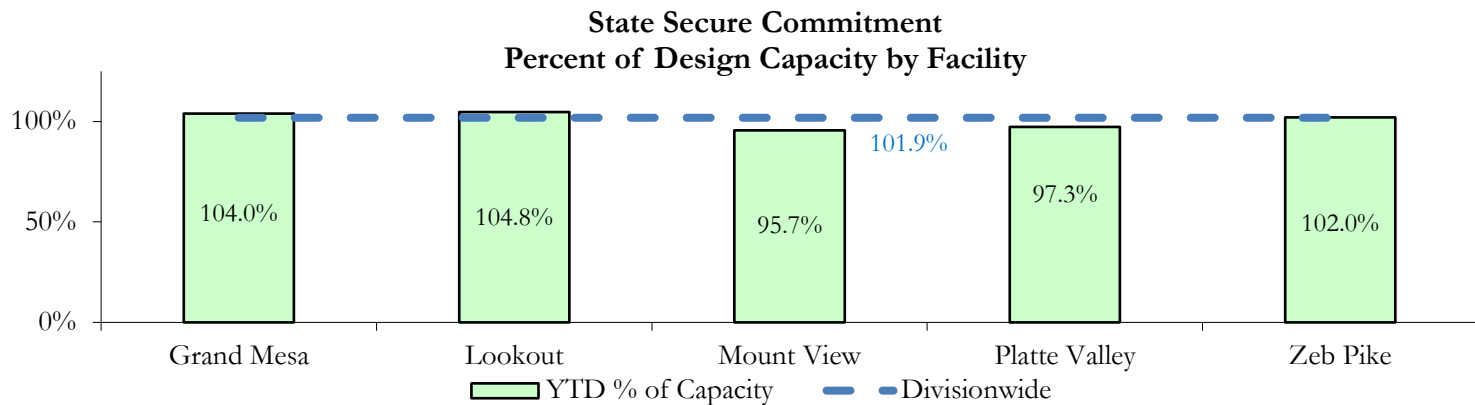
STATE SECURE				
Facility	ADP		Capacity	
	State Secure		Design	
	Monthly	YTD	Capacity	% of YTD
Adams ¹	0.0	0.0	-	-
Gilliam ¹	1.0	0.5	-	-
Grand Mesa	41.2	41.6	40	104.0%
Lookout	146.8	146.7	140	104.8%
Marvin Foote ¹	0.2	0.5	-	-
Mount View	62.7	62.2	65	95.7%
Platte Valley	50.4	53.5	55	97.3%
Pueblo ¹	0.0	0.1	-	-
Spring Creek ²	0.4	0.7	-	-
Zeb Pike	38.8	38.8	38	102.0%
Assessment Total	29.3	30.7	-	
Secure Total	312.2	313.8	-	
STATE SECURE TOTAL	341.5	344.4	338	101.9%

¹ Detention only facilities with commitment ADP due to committed youth being held in detention prior to transfer.

² Spring Creek was designated a detention only facility effective November 1, 2016 and no longer has commitment capacity allocation.

CONTRACT: PRIVATE SECURE + STAFF SUPERVISED

Facility/Program ²	ADP	
	Monthly	YTD
(Private Secure) Betty K. Marler Center	39.2	40.4
(Private Secure) Robert DeNier	6.7	6.7
Alternative Homes For Youth - Greeley	16.8	16.2
Gateway Residential Program - Delta	1.0	1.4
Hilltop (Residential Youth Services)	2.7	2.9
Jefferson Hills - Aurora	38.7	38.3
Ridge View	116.9	118.4
Southern Peaks	3.9	4.4
Third Way Center - Lowry	5.0	4.5
<i>Private Secure & Staff Supervised Subtotal</i>	230.7	233.1



² Programs with both Secure and Community placements are aggregated into one category until further TRAILS builds can allow for programs to register as multiple types.

September 2017 DYS Population Report

III. Commitment Services Continued

B. Community/Other Residential ADP by Facility¹

COMMUNITY RESIDENTIAL		
	<i>Monthly</i>	<i>YTD</i>
Ariel Clinical Services	2.0	1.7
Dale House Project	7.8	7.5
Denver Area Youth Services (DAYS)	3.0	3.8
Gateway Residential Program - Grand Junction	1.1	1.6
Griffith Centers for Children, Inc.	6.0	4.5
Job Corps	6.7	5.3
Kids Crossing	1.0	1.5
Mesa County Community Corrections	1.0	1.4
Mt Evans Qualifying House	11.0	9.8
Synergy Administration	2.0	1.9
Third Way Center, Bannock	1.0	1.0
Third Way Center, Pontiac	8.2	7.8
Third Way Center, York	2.2	2.1
Third Way Center, Lincoln	2.0	2.7
Turning Point Center, Prospect	4.7	4.6
Turning Point, Mathews St.	4.8	5.0
<i>Community Subtotal</i>	<i>64.4</i>	<i>62.4</i>
<i>Private Secure + Staff Supervised + Community Subtotal</i>	<i>295.1</i>	<i>295.5</i>
OTHER RESIDENTIAL		
	<i>Monthly</i>	<i>YTD</i>
CMHI-Pueblo	0.9	1.1
Job Corps Parole Program (Federally funded)	0.8	2.0
Other Mental Health Facility	0.0	0.03
Residential Drug/Alcohol Program	0.1	0.05
Residential Mental Health Program	2.0	2.0
Shelter Care (short term)	0.0	0.2
<i>Other Residential Subtotal²</i>	<i>4.2</i>	<i>6.0</i>
RESIDENTIAL TOTAL		
	640.8	646.0

¹ Programs with both Secure and Community placements are aggregated into one category until further TRAILS builds can allow for programs to register as multiple types.

² Due to relatively few youth referred to these types of placements, the Other Residential Subtotals may not be the sum of individual placements; this is typically the result of rounding errors and the method by which ADP is calculated.

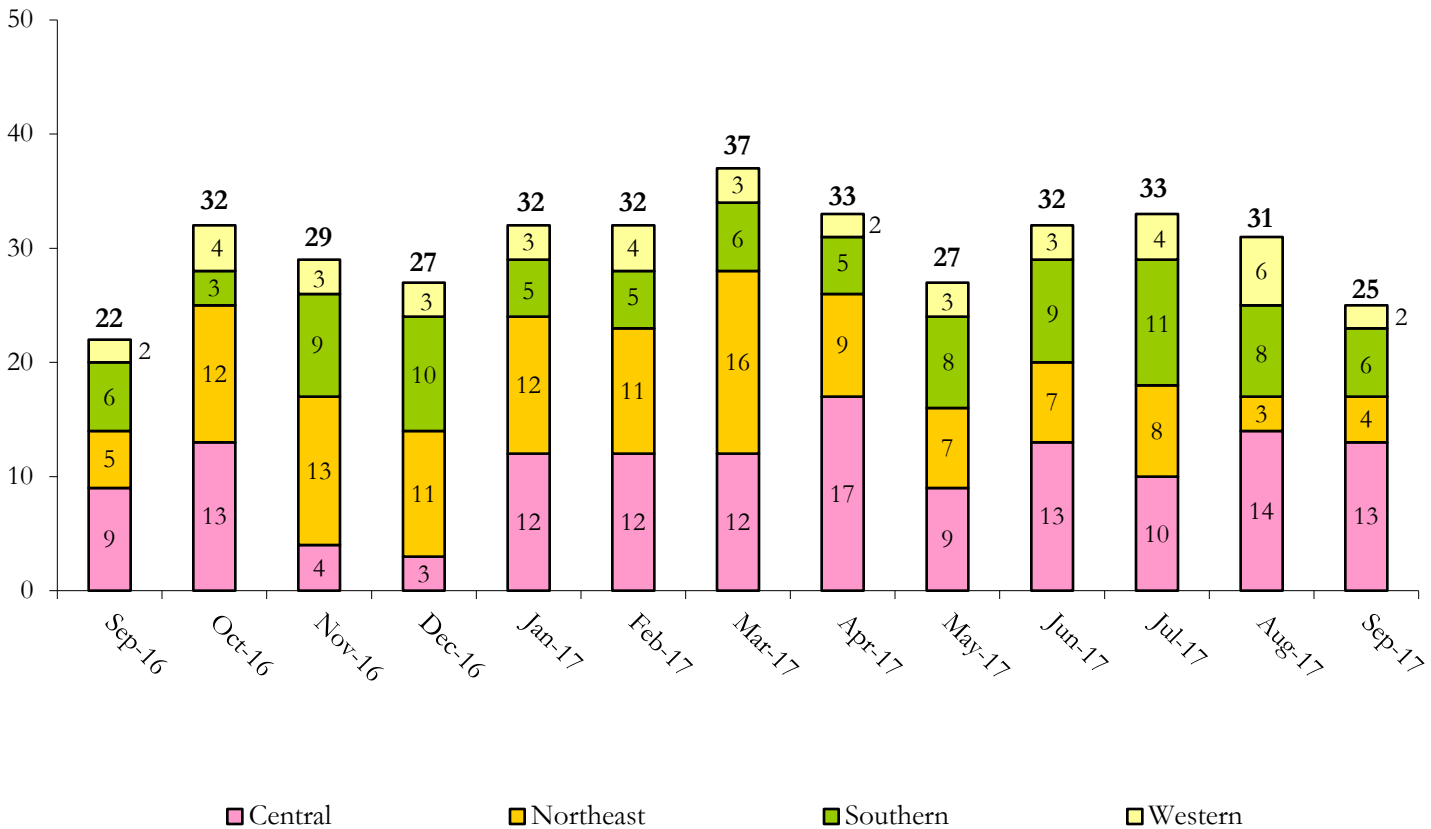
September 2017 DYS Population Report

IV. Commitment ADP and New Commitments

COMMITMENT ADP				
Region	Monthly		YTD	
	September	% Change	September	% Change from Prior FY
Central Region	251.8	-0.7%	253.5	-7.2%
Northeast Region	174.7	-4.8%	183.6	1.6%
Southern Region	148.1	3.7%	141.7	1.2%
Western Region	66.3	-1.1%	67.3	10.7%
Commitment ADP	640.8	-0.9%	646.0	-1.3%

NEW COMMITMENTS					
	FY 17-18		FY 16-17		% Change from last YTD
	September	YTD	September	YTD	
Central Region	13	38	9	28	35.7%
Northeast Region	4	15	5	33	-54.5%
Southern Region	6	26	6	17	52.9%
Western Region	2	12	2	10	20.0%
TOTAL	25	91	22	88	3.4%

Monthly New Commitments



September 2017 DYS Population Report

V. Parole Services

PAROLE ADP				
Region	Monthly	YTD		% Change from prev YTD
		FY 17-18	FY 16-17	
Central Region	71.6	69.4	100.7	-31.1%
Northeast Region	74.4	68.6	78.6	-12.7%
Southern Region	44.2	40.4	46.2	-12.7%
Western Region	22.9	22.8	20.7	10.3%
Total	213.0	201.1	246.2	-18.3%

Parole Intakes			Parole Discharges		
Region	Monthly	YTD	Monthly	YTD	LOS
Central Region	13	34	14	30	6.2
Northeast Region	11	35	5	24	6.9
Southern Region	4	15	1	15	7.9
Western Region	6	15	3	8	6.0
Total	34	99	23	77	6.7

