

August 2017 FY 2017-2018 MONTHLY POPULATION REPORT

Prepared by the Division of Youth Services (DYS)
Data Management and Analysis
September 19th



COLORADO

**Office of Children,
Youth & Families**

Division of Youth Services

August 2017 DYS Population Report

I. Summary Population Data	1
II. Detention ADP by Facility	2
III. Commitment Services	
A. State and Contract ADP by Facility	3
B. Community/Other Residential ADP by Facility	4
IV. Commitment ADP and New Commitments by Region	5
V. Parole Services	6

August 2017 DYS Population Report

I. Summary Population Data

DETAINED YOUTH

	August 2017		YTD	
	ADP	% change	ADP	LOS
State-Operated	248.9	-3.0%	252.0	14.3 days
Contracted Staff Secure	10.7	0.3%	10.7	26.0 days
Total Detained	259.5	-2.9%	262.6	14.6 days

COMMITTED YOUTH

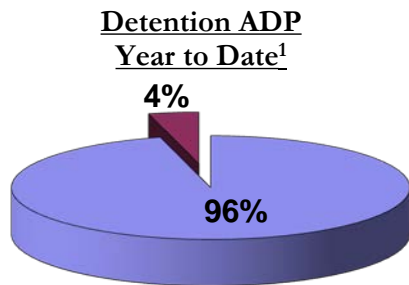
	August 2017		YTD	
	ADP	% change	ADP	LOS
Secure	394.1	0.6%	392.9	13.8 months
Staff Supervised	186.1	0.3%	185.5	11.4 months
Community Residential	60.1	-7.1%	62.1	4.4 months
Other Residential	6.4	-2.6%	6.6	1.2 months
Total Committed Residential	646.7	-0.3%	647.0	23.4 months
<i>Committed Residential w/o Boulder</i>	<i>646.5</i>	<i>-0.2%</i>	<i>646.7</i>	<i>-</i>

PAROLE YOUTH

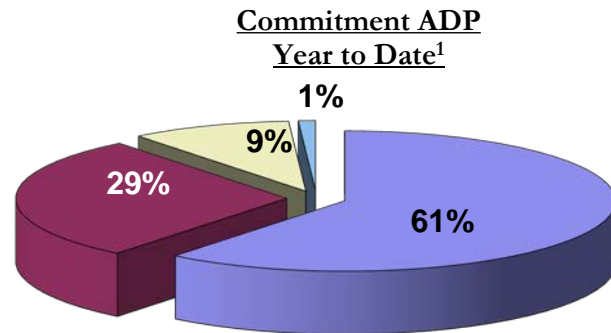
	August 2017		YTD	
	ADP	% change	ADP	LOS
Parole	200.3	6.4%	195.3	7.0 months

TOTAL STATEWIDE ADP

	August 2017		YTD	
	ADP	% change	ADP	LOS
DETENTION	259.5	-2.9%	262.6	14.6 days
COMMITMENT	646.7	-0.3%	647.0	23.4 months
PAROLE	200.3	6.4%	195.3	7.0 months
STATE TOTAL	1,106.5	0.2%	1,105.0	N/A



■ State-Operated ■ Contracted Staff Secure



■ Secure ■ Staff Supervised ■ Community Residential ■ Other Residential

¹ Due to rounding, totals may not add to 100%.

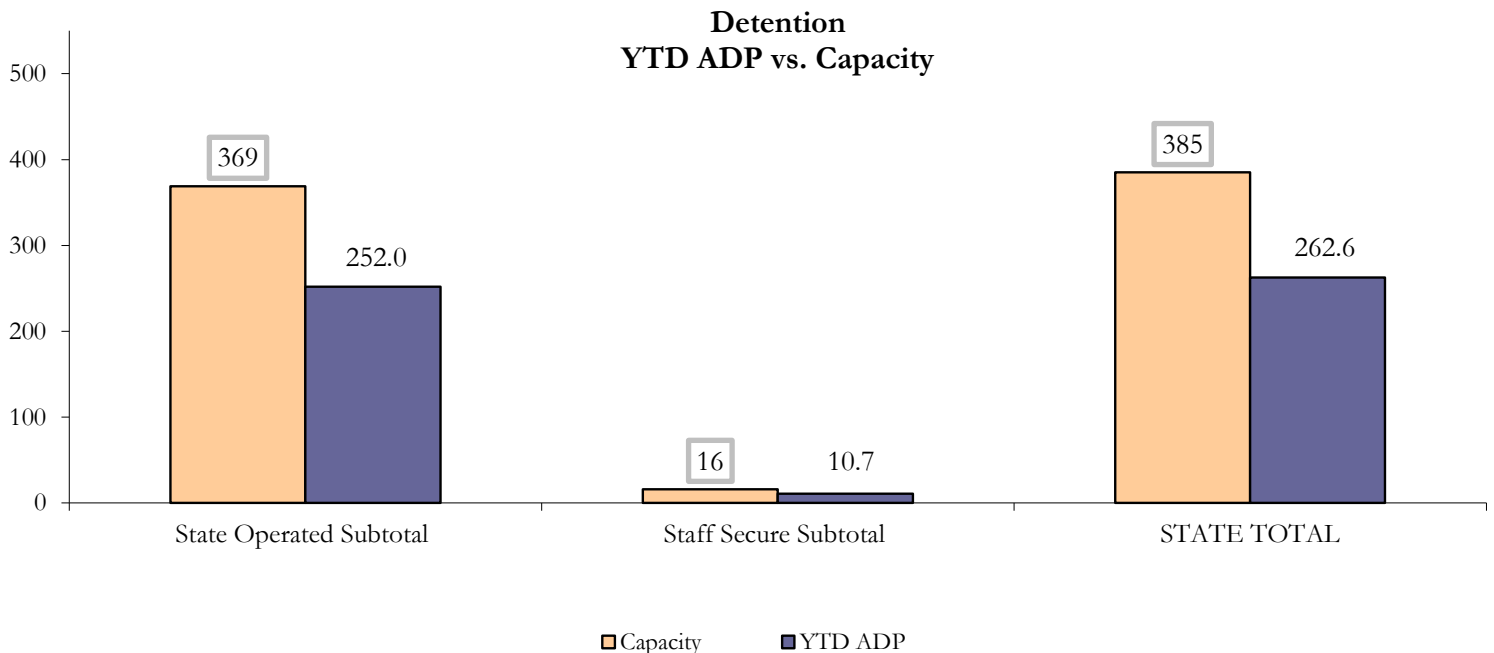
August 2017 DYS Population Report

II. Detention ADP by Facility

State Operated Detention							
Facility	Operating Capacity	Average Daily Population			New Admissions		LOS (days)
		Monthly	YTD	YTD % of Cap	Monthly	YTD	YTD
Adams	30	23.4	22.3	74.3%	48	94	13.1
Gilliam	64	33.5	38.9	60.8%	72	134	15.8
Grand Mesa	30	20.9	20.5	68.4%	30	57	17.4
Marvin Foote	61	39.2	35.8	58.7%	115	181	11.2
Mount View	42	30.1	30.1	71.6%	62	116	11.7
Platte Valley	64	39.0	41.0	64.1%	92	162	14.7
Pueblo	27	15.5	16.0	59.4%	39	87	11.9
Spring Creek	51	47.2	47.3	92.7%	58	117	20.7
State Subtotal	369	248.9	252.0	68.3%	516	948	14.3

Staff Secure Detention							
Facility	Operating Capacity	Average Daily Population			New Admissions		LOS (days)
		Monthly	YTD	YTD % of Cap	Monthly	YTD	YTD
Brown Center	3	0.0	0.0	0.0%	0	0	0.0
Robert DeNier	9	7.6	7.6	84.7%	12	15	31.3
Youthtrack San Luis Valley	4	3.1	3.0	76.2%	3	7	14.6
Staff Secure Subtotal	16	10.7	10.7	66.7%	15	22	26.0

STATEWIDE TOTAL							
	Operating Capacity	Average Daily Population			New Admissions		LOS (days)
		Monthly	YTD	YTD % of Cap	Monthly	YTD	YTD
Total Detention	385	259.5	262.6	68.2%	531	970	14.6



August 2017 DYS Population Report

III. Commitment Services

A. State and Contract ADP by Facility

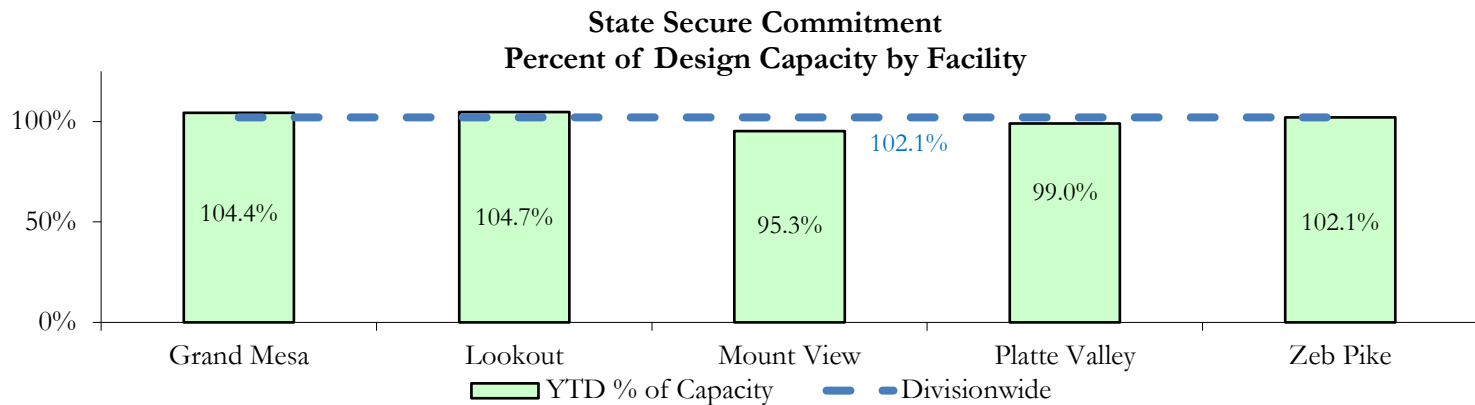
STATE SECURE				
Facility	ADP		Capacity	
	State Secure		Design	
	Monthly	YTD	Capacity	% of YTD
<i>Adams</i> ¹	0.0	0.0	-	-
<i>Gilliam</i> ¹	0.4	0.2	-	-
Grand Mesa	41.8	41.8	40	104.4%
Lookout	146.7	146.6	140	104.7%
<i>Marvin Foote</i> ¹	0.2	0.6	-	-
Mount View	64.2	62.0	65	95.3%
Platte Valley	54.2	54.4	55	99.0%
<i>Pueblo</i> ¹	0.1	0.1	-	-
<i>Spring Creek</i> ²	0.4	0.8	-	-
Zeb Pike	38.6	38.8	38	102.1%
Assessment Total	32.4	32.4	-	
Secure Total	314.2	312.9	-	
STATE SECURE TOTAL	346.6	345.2	338	102.1%

¹ Detention only facilities with commitment ADP due to committed youth being held in detention prior to transfer.

² Spring Creek was designated a detention only facility effective November 1, 2016 and no longer has commitment capacity allocation.

CONTRACT: PRIVATE SECURE + STAFF SUPERVISED

Facility/Program ²	ADP	
	Monthly	YTD
(Private Secure) Betty K. Marler Center	41.0	41.0
(Private Secure) Robert DeNier	6.5	6.7
Alternative Homes For Youth - Greeley	15.3	15.4
Gateway Residential Program - Delta	1.1	1.6
Hilltop (Residential Youth Services)	3.1	3.0
Jefferson Hills - Aurora	37.0	38.1
Ridge View	121.5	118.5
Southern Peaks	4.4	4.7
Third Way Center - Lowry	3.8	4.2
<i>Private Secure & Staff Supervised Subtotal</i>	233.6	233.2



² Programs with both Secure and Community placements are aggregated into one category until further TRAILS builds can allow for programs to register as multiple types.

August 2017 DYS Population Report

III. Commitment Services Continued

B. Community/Other Residential ADP by Facility¹

COMMUNITY RESIDENTIAL		
	<i>Monthly</i>	<i>YTD</i>
Ariel Clinical Services	1.1	1.5
Dale House Project	6.4	7.4
Denver Area Youth Services (DAYS)	2.8	4.1
Gateway Residential Program - Grand Junction	1.9	1.9
Griffith Centers for Children, Inc.	4.4	3.8
Job Corps	5.4	4.6
Kids Crossing	1.5	1.8
Mesa County Community Corrections	1.0	1.6
Mt Evans Qualifying House	8.2	8.9
Synergy Administration	2.1	1.9
Third Way Center, Bannock	1.0	1.0
Third Way Center, Pontiac	7.2	7.7
Third Way Center, York	2.1	2.1
Third Way Center, Lincoln	3.2	3.0
Turning Point Center, Prospect	4.9	4.7
Turning Point, Mathews St.	6.7	6.1
<i>Community Subtotal</i>	<i>60.1</i>	<i>62.1</i>
<i>Private Secure + Staff Supervised + Community Subtotal</i>	<i>293.7</i>	<i>295.3</i>
OTHER RESIDENTIAL		
	<i>Monthly</i>	<i>YTD</i>
CMHI-Pueblo	1.0	1.2
Job Corps Parole Program (Federally funded)	2.9	2.5
Other Mental Health Facility	0.0	0.1
Residential Mental Health Program	2.0	2.0
Shelter Care (short term)	0.0	0.3
<i>Other Residential Subtotal²</i>	<i>6.4</i>	<i>6.5</i>
RESIDENTIAL TOTAL		
	646.7	647.0

¹ Programs with both Secure and Community placements are aggregated into one category until further TRAILS builds can allow for programs to register as multiple types.

² Due to relatively few youth referred to these types of placements, the Other Residential Subtotals may not be the sum of individual placements; this is typically the result of rounding errors and the method by which ADP is calculated.

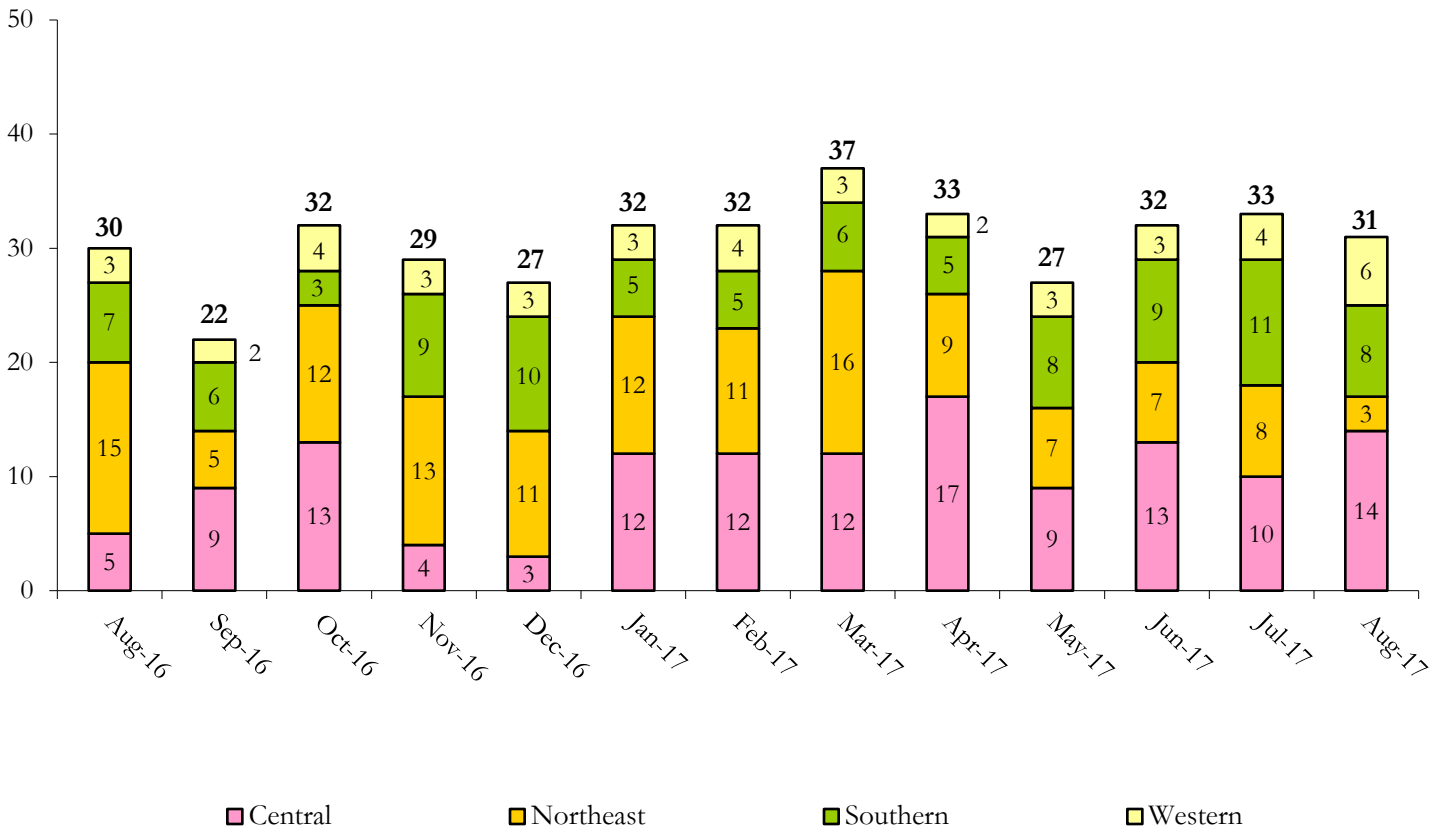
August 2017 DYS Population Report

IV. Commitment ADP and New Commitments

COMMITMENT ADP				
Region	Monthly		YTD	
	August	% Change	August	% Change from Prior FY
Central Region	253.5	-0.3%	253.9	-7.7%
Northeast Region	183.4	-4.1%	186.7	2.9%
Southern Region	142.8	4.6%	139.6	-1.8%
Western Region	67.1	0.8%	66.8	9.8%
Commitment ADP	646.7	-0.3%	647.0	-1.9%

NEW COMMITMENTS					
	FY 17-18		FY 16-17		% Change from last YTD
	August	YTD	August	YTD	
Central Region	14	25	5	17	47.1%
Northeast Region	3	11	15	28	-60.7%
Southern Region	8	19	7	11	72.7%
Western Region	6	10	3	7	42.9%
TOTAL	31	65	30	63	3.2%

Monthly New Commitments



August 2017 DYS Population Report

V. Parole Services

PAROLE ADP				
Region	Monthly	YTD		% Change from prev YTD
		FY 17-18	FY 16-17	
Central Region	70.5	67.7	104.3	-35.1%
Northeast Region	67.8	66.5	76.2	-12.7%
Southern Region	38.1	38.4	47.0	-18.3%
Western Region	23.9	22.7	22.6	0.6%
Total	200.3	195.3	250.1	-21.9%

Region	Parole Intakes		Parole Discharges		LOS
	Monthly	YTD	Monthly	YTD	
Central Region	8	21	10	16	6.1
Northeast Region	13	23	4	17	7.2
Southern Region	8	11	5	12	8.1
Western Region	1	9	3	5	6.0
Total	30	64	22	50	7.0

Monthly Parole ADP

