

June 2017 FY 2016-2017 MONTHLY POPULATION REPORT

Prepared by the Division of Youth Services (DYS)
Research and Evaluation Unit
July 20th, 2017



COLORADO

**Office of Children,
Youth & Families**

Division of Youth Services

June 2017

DYS Population Report

I. Summary Population Data	1
II. Detention ADP by Facility	2
III. Commitment Services	
A. State and Contract ADP by Facility	3
B. Community/Other Residential ADP by Facility	4
IV. Commitment ADP and New Commitments by Region	5
V. Parole Services	6

June 2017 DYS Population Report

I. Summary Population Data

DETAINED YOUTH

	June 2017		YTD	
	ADP	% change	ADP	LOS
State-Operated	253.2	2.7%	252.1	15.3 days
Contracted Staff Secure	7.1	18.8%	5.1	14.7 days
Total Detained	260.4	3.1%	257.1	15.3 days

COMMITTED YOUTH

	June 2017		YTD	
	ADP	% change	ADP	LOS
Secure	387.7	-2.5%	383.1	10.9 months
Staff Supervised	192.0	0.7%	197.4	9.8 months
Community Residential	71.4	6.0%	64.1	5.4 months
Other Residential	5.1	-6.7%	6.4	2.7 months
Total Committed Residential	656.2	-0.7%	651.0	20.3 months
<i>Committed Residential w/o Boulder</i>	<i>655.2</i>	<i>-0.7%</i>	<i>649.9</i>	<i>-</i>

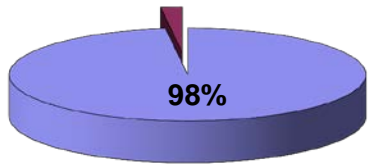
PAROLE YOUTH

	June 2017		YTD	
	ADP	% change	ADP	LOS
Parole	194.0	-1.0%	220.4	7.3 months

TOTAL STATEWIDE ADP

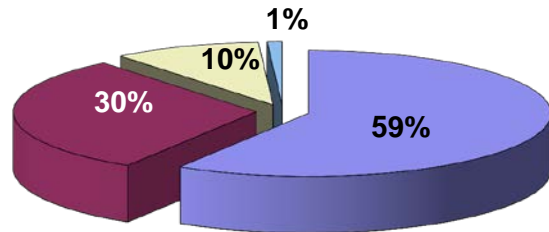
	June 2017		YTD	
	ADP	% change	ADP	LOS
DETENTION	260.4	3.1%	257.1	15.3 days
COMMITMENT	656.2	-0.7%	651.0	20.3 months
PAROLE	194.0	-1.0%	220.4	7.3 months
STATE TOTAL	1,110.5	0.1%	1,128.5	N/A

**2% Detention ADP
Year to Date¹**



■ State-Operated ■ Contracted Staff Secure

**Commitment ADP
Year to Date¹**



■ Secure ■ Staff Supervised ■ Community Residential ■ Other Residential

¹ Due to rounding, totals may not add to 100%.

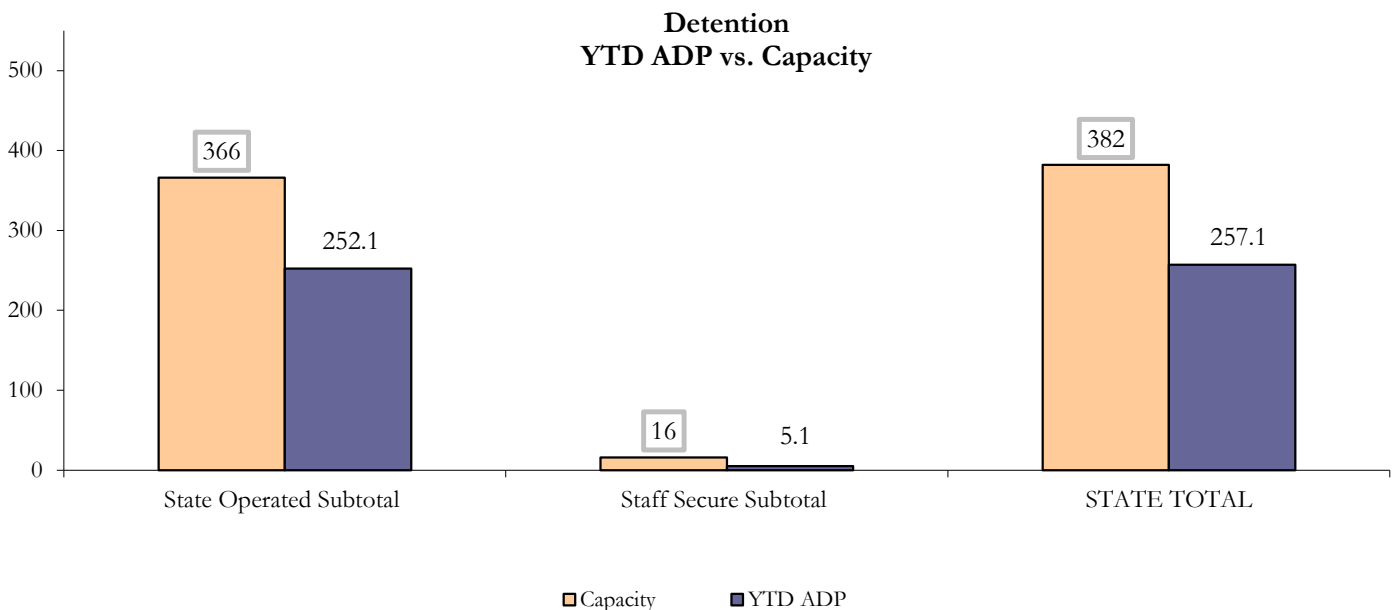
June 2017 DYS Population Report

II. Detention ADP by Facility

State Operated Detention							
Facility	Operating Capacity	Average Daily Population			New Admissions		LOS (days)
		Monthly	YTD	YTD % of Cap	Monthly	YTD	YTD
Adams	30	22.3	21.8	72.6%	47	494	15.6
Gilliam	64	39.2	44.6	69.7%	67	930	18.0
Grand Mesa	27	17.4	17.8	65.8%	26	357	16.5
Marvin Foote	61	42.7	39.4	64.5%	90	983	14.7
Mount View	42	29.2	25.6	60.9%	67	716	12.5
Platte Valley	64	34.5	39.0	60.9%	74	1,048	13.2
Pueblo	27	19.5	18.3	67.9%	57	503	13.4
Spring Creek	51	48.5	45.7	89.6%	67	833	18.3
State Subtotal	366	253.2	252.1	68.9%	495	5,864	15.3

Staff Secure Detention							
Facility	Operating Capacity	Average Daily Population			New Admissions		LOS (days)
		Monthly	YTD	YTD % of Cap	Monthly	YTD	YTD
Brown Center	3	0.3	0.4	14.9%	2	15	10.9
Robert DeNier	9	4.9	2.8	31.7%	8	61	15.0
Youthtrack San Luis Valley	4	1.9	1.8	43.9%	4	41	15.9
Staff Secure Subtotal	16	7.1	5.1	31.6%	14	117	14.7

STATEWIDE TOTAL							
	Operating Capacity	Average Daily Population			New Admissions		LOS (days)
		Monthly	YTD	YTD % of Cap	Monthly	YTD	YTD
Total Detention	382	260.4	257.1	67.3%	509	5,981	15.3



June 2017 DYS Population Report

III. Commitment Services

A. State and Contract ADP by Facility

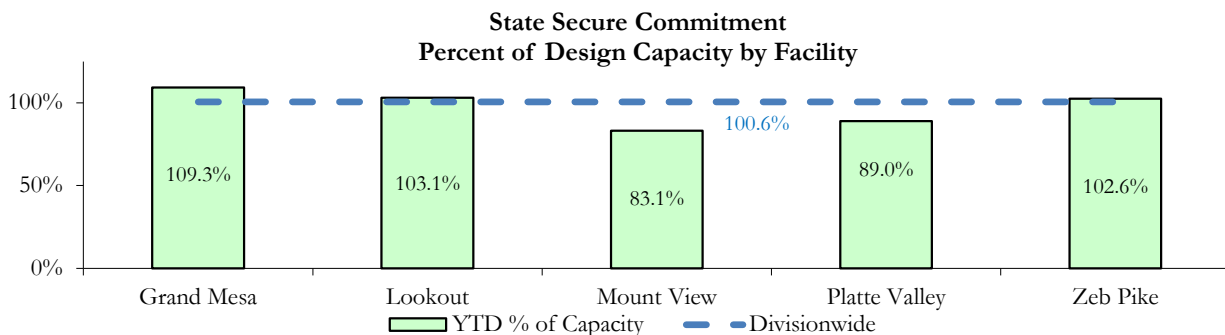
STATE SECURE				
Facility	ADP		Capacity	
	State Secure		Design	
	Monthly	YTD	Capacity	% of YTD
<i>Adams</i> ¹	0.3	0.4	-	-
<i>Gilliam</i> ¹	0.3	0.9	-	-
Grand Mesa	43.9	43.7	40	109.3%
Lookout	146.9	144.3	140	103.1%
<i>Marvin Foote</i> ¹	0.3	1.0	-	-
Mount View	55.7	54.0	65	83.1%
Platte Valley	55.7	48.9	55	89.0%
<i>Pueblo</i> ¹	1.4	0.4	-	-
<i>Spring Creek</i> ²	0.8	7.4	-	-
Zeb Pike	38.2	39.0	38	102.6%
Assessment Total	26.0	28.9	-	
Secure Total	317.5	311.2	-	
STATE SECURE TOTAL	343.5	340.1	338	100.6%

¹ Detention only facilities with commitment ADP due to committed youth being held in detention prior to transfer.

² Spring Creek was designated a detention only facility effective November 1, 2016 and no longer has commitment capacity allocation.

CONTRACT: PRIVATE SECURE + STAFF SUPERVISED

Facility/Program ²	ADP	
	Monthly	YTD
(Private Secure) Betty K. Marler Center	40.9	38.0
(Private Secure) Robert DeNier	3.3	5.0
Alternative Homes For Youth - Greeley	15.6	14.6
Devereux Cleo Wallace	0.0	0.3
Gateway Residential Program - Delta	3.0	1.6
Hilltop (Residential Youth Services)	4.0	5.4
Jefferson Hills - Aurora	41.3	33.8
Ridge View	117.9	126.7
Robert Brown Center	0.0	0.8
Southern Peaks	5.5	4.9
Third Way Center - Lowry	4.7	9.0
<i>Private Secure & Staff Supervised Subtotal</i>	236.1	240.4



² Programs with both Secure and Community placements are aggregated into one category until further TRAILS builds can allow for programs to register as multiple types.

June 2017 DYS Population Report

III. Commitment Services Continued

B. Community/Other Residential ADP by Facility¹

COMMUNITY RESIDENTIAL		
	<i>Monthly</i>	<i>YTD</i>
Ariel Clinical Services	2.2	1.1
Dale House Project	10.8	8.8
Denver Area Youth Services (DAYS)	4.1	3.6
Gateway Residential Program - Grand Junction	2.1	0.6
Griffith Centers for Children, Inc.	4.4	2.9
Job Corps	2.5	2.7
Kids Crossing	2.0	2.7
Mesa County Community Corrections	3.0	1.3
Mt Evans Qualifying House	8.4	6.5
Reflections for Youth, Inc.-Grismore	0.0	0.3
Savio House	0.0	0.4
Synergy Administration	2.0	4.6
Third Way Center, Bannock	1.0	1.2
Third Way Center, Pontiac	7.2	5.8
Third Way Center, York	3.4	4.9
Third Way Center, Lincoln	4.3	6.8
Turning Point Center, Prospect	6.8	3.1
Turning Point, Mathews St.	7.2	5.9
Whimspire Child Placement	0.0	0.1
Youthtrack, Work and Learn	0.0	0.6
<i>Community Subtotal</i>	<i>71.4</i>	<i>64.1</i>
<i>Private Secure + Staff Supervised + Community Subtotal</i>	<i>307.5</i>	<i>304.5</i>
OTHER RESIDENTIAL		
	<i>Monthly</i>	<i>YTD</i>
CMHI-Ft. Logan	0.0	0.04
CMHI-Pueblo	1.2	0.4
Hospital	0.0	0.09
Immigration Detention Facility	0.0	0.4
Job Corps Parole Program (Federally funded)	2.4	1.5
Other Mental Health Facility	0.6	0.09
Residential Drug/Alcohol Program	0.1	0.01
Residential Mental Health Program	0.0	1.4
Residential Work Program	0.0	0.3
Shelter Care (short term)	0.0	0.3
<i>Other Residential Subtotal²</i>	<i>5.1</i>	<i>6.4</i>
RESIDENTIAL TOTAL		
	656.2	651.0

¹ Programs with both Secure and Community placements are aggregated into one category until further TRAILS builds can allow for programs to register as multiple types.

² Due to relatively few youth referred to these types of placements, the Other Residential Subtotals may not be the sum of individual placements; this is typically the result of rounding errors and the method by which ADP is calculated.

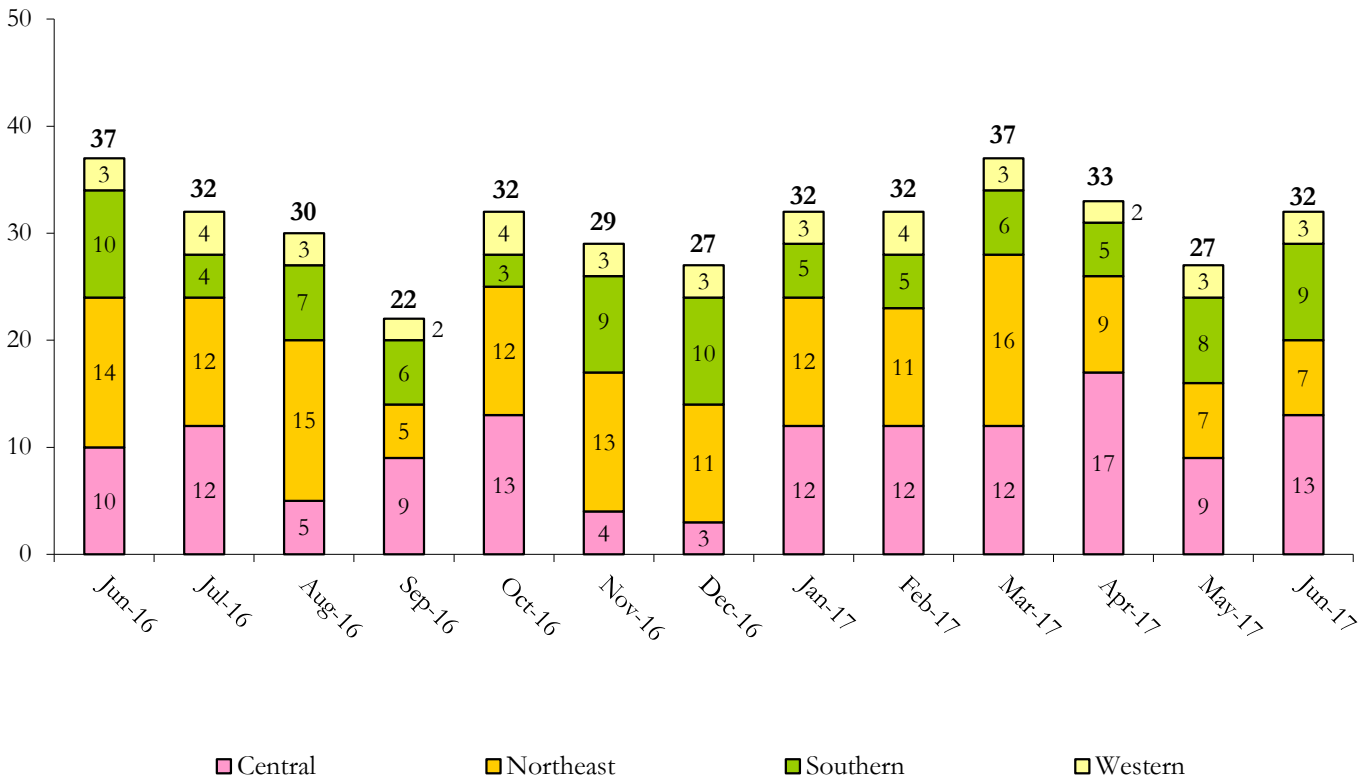
June 2017 DYS Population Report

IV. Commitment ADP and New Commitments

COMMITMENT ADP				
Region	Monthly		YTD	
	June	% Change	June	% Change from Prior FY
Central Region	254.0	-0.9%	260.2	-12.7%
Northeast Region	199.7	-1.2%	189.4	-0.8%
Southern Region	133.5	-2.2%	136.7	-4.4%
Western Region	68.9	4.1%	64.7	6.7%
Commitment ADP	656.2	-0.7%	651.0	-6.0%

NEW COMMITMENTS					
	FY 16-17		FY 15-16		% Change from last YTD
	June	YTD	June	YTD	
Central Region	13	124	10	149	-16.8%
Northeast Region	7	135	14	117	15.4%
Southern Region	9	81	10	74	9.5%
Western Region	3	40	3	41	-2.4%
TOTAL	32	380	37	381	-0.3%

Monthly New Commitments



June 2017 DYS Population Report

V. Parole Services

PAROLE ADP				
Region	Monthly	YTD		% Change from prev YTD
		FY 16-17	FY 15-16	
Central Region	68.0	86.5	102.8	-15.8%
Northeast Region	63.8	68.8	71.0	-3.0%
Southern Region	43.9	44.8	49.3	-9.0%
Western Region	18.3	20.2	23.6	-14.3%
Total	194.0	220.4	246.6	-10.6%

Region	Parole Intakes		Parole Discharges		
	Monthly	YTD	Monthly	YTD	LOS
Central Region	7	135	17	182	7.4
Northeast Region	13	109	6	122	7.2
Southern Region	7	77	6	79	7.3
Western Region	3	36	4	44	6.9
Total	30	357	33	427	7.3

