

May 2017
FY 2016-2017
MONTHLY POPULATION REPORT

Prepared by the Division of Youth Services (DYS)
Research and Evaluation Unit
June 23rd, 2017



COLORADO

**Office of Children,
Youth & Families**

Division of Youth Services

May 2017

DYS Population Report

I. Summary Population Data	1
II. Detention ADP by Facility	2
III. Commitment Services	
A. State and Contract ADP by Facility	3
B. Community/Other Residential ADP by Facility	4
IV. Commitment ADP and New Commitments by Region	5
V. Parole Services	6

May 2017 DYS Population Report

I. Summary Population Data

DETAINED YOUTH

	May 2017		YTD	
	ADP	% change	ADP	LOS
State-Operated	246.5	-3.1%	252.2	15.2 days
Contracted Staff Secure	6.0	48.1%	4.9	15.2 days
Total Detained	252.5	-2.3%	257.1	15.2 days

COMMITTED YOUTH

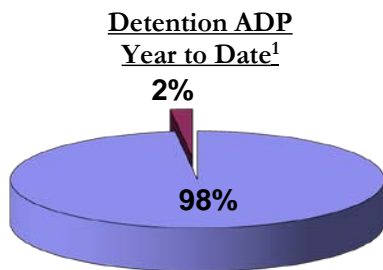
	May 2017		YTD	
	ADP	% change	ADP	LOS
Secure	397.6	-0.6%	382.8	10.8 months
Staff Supervised	190.6	-2.9%	197.8	10.0 months
Community Residential	67.3	9.3%	63.2	5.4 months
Other Residential	5.5	-8.5%	6.4	2.9 months
Total Committed Residential	661.0	-0.5%	650.1	20.2 months
<i>Committed Residential w/o Boulder</i>	<i>659.9</i>	<i>-0.5%</i>	<i>649.1</i>	-

PAROLE YOUTH

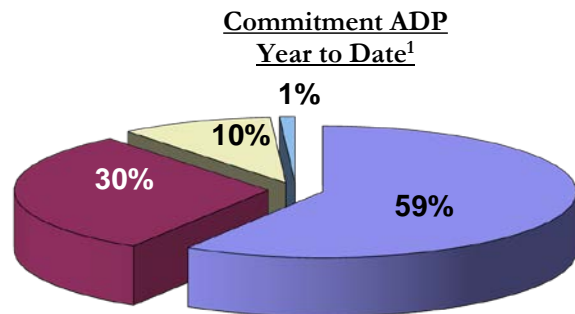
	May 2017		YTD	
	ADP	% change	ADP	LOS
Parole	195.9	4.1%	222.8	7.3 months

TOTAL STATEWIDE ADP

	May 2017		YTD	
	ADP	% change	ADP	LOS
DETENTION	252.5	-2.3%	257.1	15.2 days
COMMITMENT	661.0	-0.5%	650.1	20.2 months
PAROLE	195.9	4.1%	222.8	7.3 months
STATE TOTAL	1,109.4	-0.1%	1,130.0	<i>N/A</i>



■ State-Operated ■ Contracted Staff Secure



■ Secure ■ Staff Supervised ■ Community Residential ■ Other Residential

¹ Due to rounding, totals may not add to 100%.

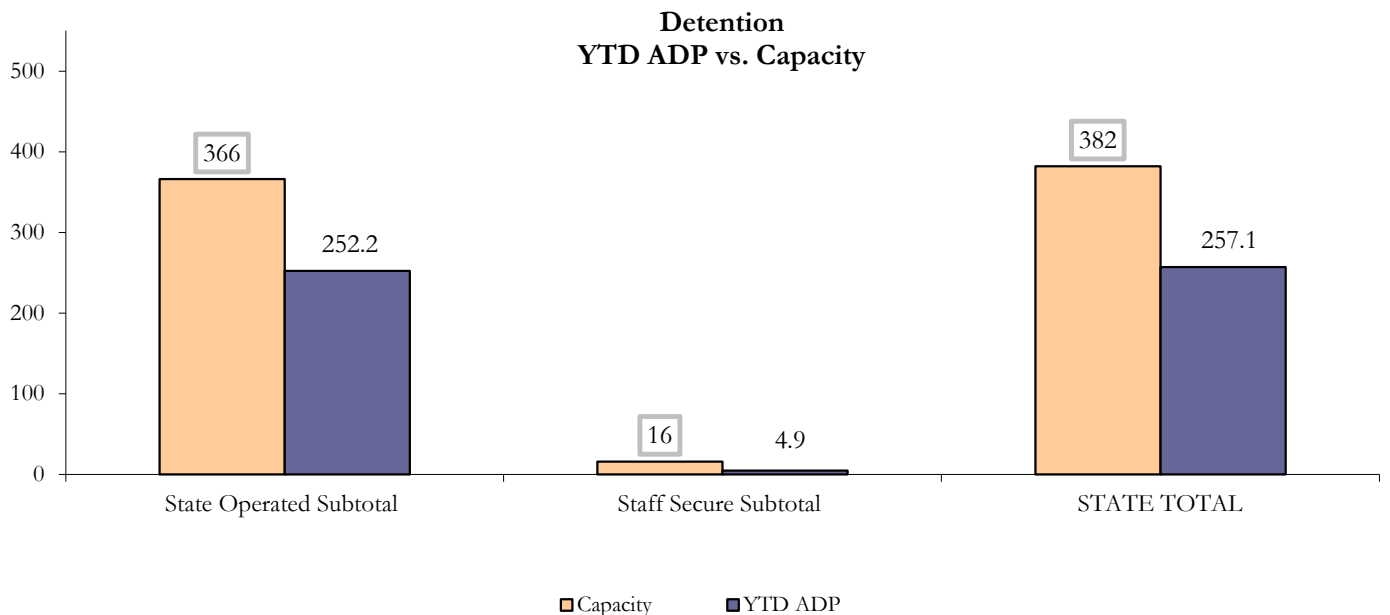
May 2017 DYS Population Report

II. Detention ADP by Facility

State Operated Detention							
Facility	Operating Capacity	Average Daily Population			New Admissions		LOS (days)
		Monthly	YTD	YTD % of Cap	Monthly	YTD	YTD
Adams	30	18.9	21.7	72.4%	30	447	15.4
Gilliam	64	41.3	45.1	70.4%	78	863	17.7
Grand Mesa	27	16.4	17.8	65.9%	35	331	16.7
Marvin Foote	61	37.8	39.1	64.0%	80	893	14.3
Mount View	41	33.6	25.3	61.8%	60	651	12.0
Platte Valley	64	33.8	39.4	61.5%	80	975	13.2
Pueblo	28	17.1	18.2	65.1%	45	446	13.8
Spring Creek	51	47.5	45.6	89.4%	52	766	18.4
State Subtotal	366	246.5	252.2	68.9%	460	5,372	15.2

Staff Secure Detention							
Facility	Operating Capacity	Average Daily Population			New Admissions		LOS (days)
		Monthly	YTD	YTD % of Cap	Monthly	YTD	YTD
Brown Center	3	0.2	0.5	15.3%	0	13	11.7
Robert DeNier	9	3.2	2.7	29.6%	8	53	15.8
Youthtrack San Luis Valley	4	2.7	1.8	43.8%	3	37	15.8
Staff Secure Subtotal	16	6.0	4.9	30.4%	11	103	15.2

STATEWIDE TOTAL							
	Operating Capacity	Average Daily Population			New Admissions		LOS (days)
		Monthly	YTD	YTD % of Cap	Monthly	YTD	YTD
Total Detention	382	252.5	257.1	67.3%	471	5,475	15.2



May 2017 DYS Population Report

III. Commitment Services

A. State and Contract ADP by Facility

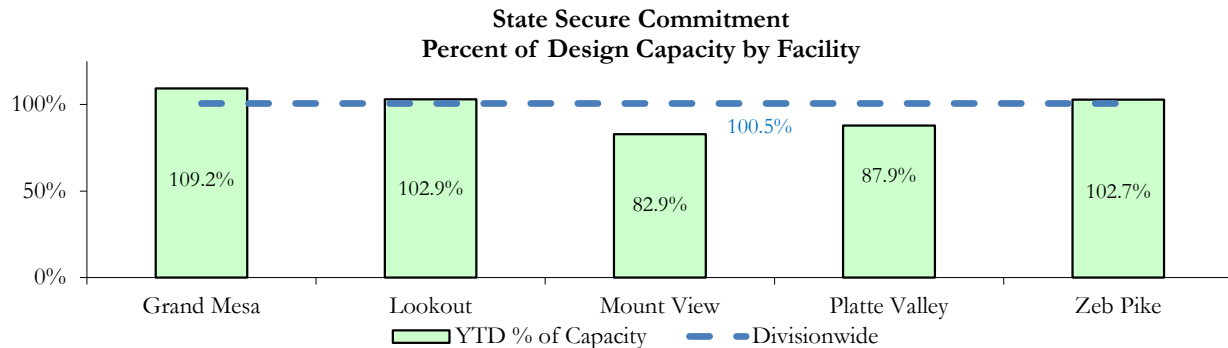
STATE SECURE					
Facility		ADP		Capacity	
		State Secure		Design	
		Monthly	YTD	Capacity	% of YTD
	<i>Adams</i> ¹	0.3	0.4	-	-
	<i>Gilliam</i> ¹	0.1	1.0	-	-
	Grand Mesa	43.3	43.7	40	109.2%
	Lookout	147.5	144.1	140	102.9%
	<i>Marvin Foote</i> ¹	1.2	1.1	-	-
	Mount View	63.1	53.9	65	82.9%
	Platte Valley	56.7	48.3	55	87.9%
	<i>Pueblo</i> ¹	0.4	0.3	-	-
	<i>Spring Creek</i> ²	1.0	8.0	-	-
	Zeb Pike	38.7	39.0	38	102.7%
	Assessment Total	26.4	29.3	-	
	Secure Total	326.1	310.5	-	
	STATE SECURE TOTAL	352.5	339.8	338	100.5%

¹ Detention only facilities with commitment ADP due to committed youth being held in detention prior to transfer.

² Spring Creek was designated a detention only facility effective November 1, 2016 and no longer has commitment capacity allocation.

CONTRACT: PRIVATE SECURE + STAFF SUPERVISED

Facility/Program ²	ADP	
	Monthly	YTD
(Private Secure) Betty K. Marler Center	41.0	37.8
(Private Secure) Robert DeNier	4.1	5.1
Alternative Homes For Youth - Greeley	14.2	14.6
Devereux Cleo Wallace	0.0	0.4
Gateway Residential Program - Delta	2.2	1.5
Hilltop (Residential Youth Services)	4.0	5.6
Jefferson Hills - Aurora	36.9	33.2
Ridge View	122.5	127.5
Robert Brown Center	0.0	0.9
Southern Peaks	5.0	4.8
Third Way Center - Lowry	5.9	9.4
<i>Private Secure & Staff Supervised Subtotal</i>	235.7	240.8



² Programs with both Secure and Community placements are aggregated into one category until further TRAILS builds can allow for programs to register as multiple types.

May 2017 DYS Population Report

III. Commitment Services Continued

B. Community/Other Residential ADP by Facility¹

COMMUNITY RESIDENTIAL		
	<i>Monthly</i>	<i>YTD</i>
Ariel Clinical Services	1.0	1.0
Dale House Project	10.1	8.7
Denver Area Youth Services (DAYS)	2.9	3.4
Gateway Residential Program - Grand Junction	2.0	0.4
Griffith Centers for Children, Inc.	2.7	2.8
Job Corps	2.1	2.8
Kids Crossing	1.9	2.7
Mesa County Community Corrections	4.0	1.2
Mt Evans Qualifying House	6.4	6.3
Reflections for Youth, Inc.-Grismore	0.0	0.4
Savio House	0.0	0.5
Synergy Administration	2.5	4.8
Third Way Center, Bannock	0.6	1.3
Third Way Center, Pontiac	7.3	5.7
Third Way Center, York	4.2	5.1
Third Way Center, Lincoln	4.0	7.1
Turning Point Center, Prospect	7.0	2.8
Turning Point, Mathews St.	8.7	5.8
Whimspire Child Placement	0.0	0.1
Youthtrack, Work and Learn	0.0	0.6
<i>Community Subtotal</i>	<i>67.3</i>	<i>63.2</i>
<i>Private Secure + Staff Supervised + Community Subtotal</i>	<i>303.0</i>	<i>304.0</i>
OTHER RESIDENTIAL		
	<i>Monthly</i>	<i>YTD</i>
CMHI-Ft. Logan	0.0	0.03
CMHI-Pueblo	1.0	0.4
Hospital	0.0	0.09
Immigration Detention Facility	0.0	0.5
Job Corps Parole Program (Federally funded)	1.3	1.4
Other Mental Health Facility	0.4	0.05
Residential Drug/Alcohol Program	0.0	0.01
Residential Mental Health Program	0.0	1.5
Residential Work Program	0.0	0.3
Shelter Care (short term)	1.0	0.5
<i>Other Residential Subtotal²</i>	<i>5.5</i>	<i>6.4</i>
RESIDENTIAL TOTAL	661.0	650.1

¹ Programs with both Secure and Community placements are aggregated into one category until further TRAILS builds can allow for programs to register as multiple types.

² Due to relatively few youth referred to these types of placements, the Other Residential Subtotals may not be the sum of individual placements; this is typically the result of rounding errors and the method by which ADP is calculated.

May 2017

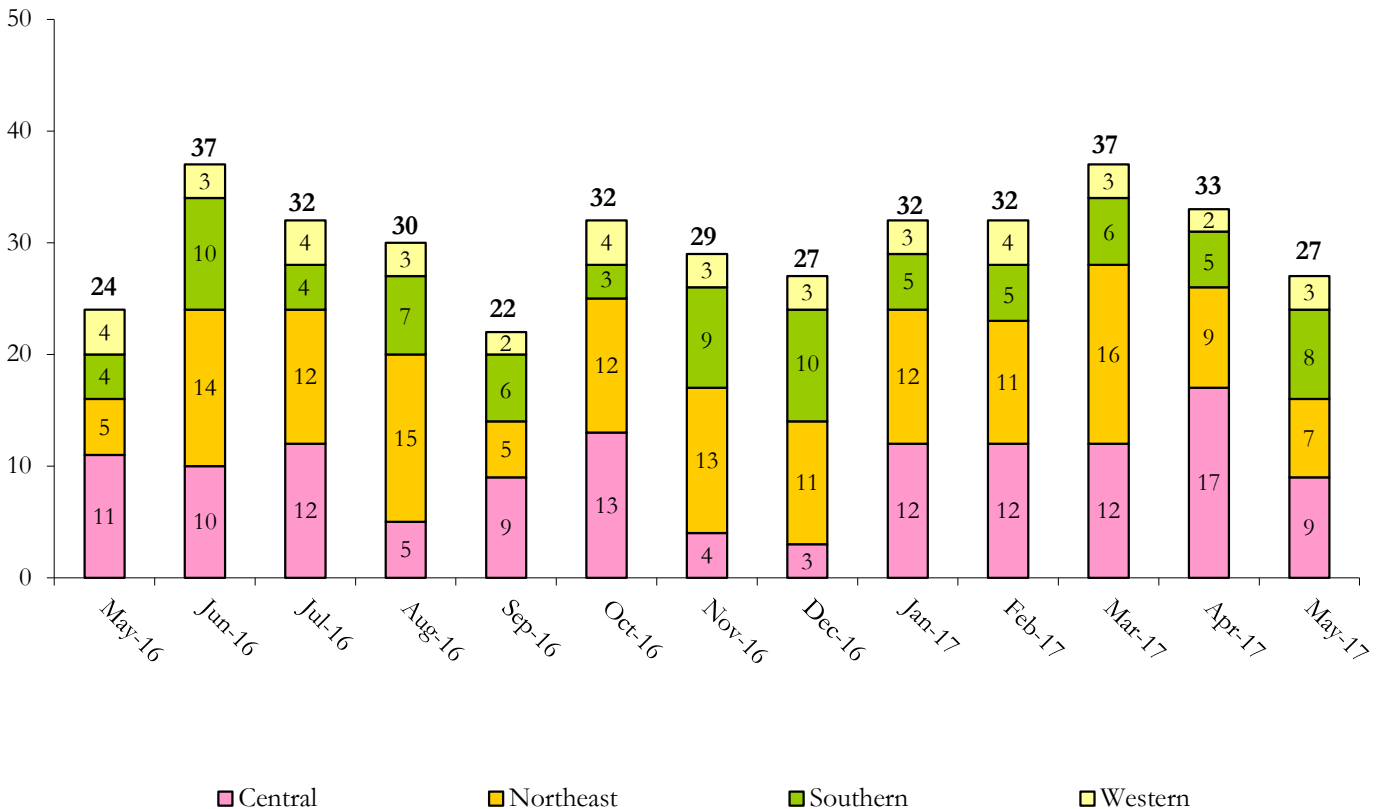
DYS Population Report

IV. Commitment ADP and New Commitments

COMMITMENT ADP				
Region	Monthly		YTD	
	May	% Change	May	% Change from Prior FY
Central Region	256.2	-1.0%	260.8	-13.4%
Northeast Region	202.1	1.3%	188.3	-1.6%
Southern Region	136.5	-1.0%	136.7	-3.9%
Western Region	66.2	-2.3%	64.4	5.2%
Commitment ADP	661.0	-0.5%	650.1	-6.6%

NEW COMMITMENTS					
	FY 16-17		FY 15-16		<i>% Change from last YTD</i>
	May	YTD	May	YTD	
Central Region	9	111	11	136	-18.4%
Northeast Region	7	127	5	102	24.5%
Southern Region	8	71	4	64	10.9%
Western Region	3	37	4	38	-2.6%
TOTAL	27	346	24	340	1.8%

Monthly New Commitments



May 2017 DYS Population Report

V. Parole Services

PAROLE ADP				
Region	Monthly	YTD		% Change from prev YTD
		FY 16-17	FY 15-16	
Central Region	75.9	88.2	102.3	-13.8%
Northeast Region	58.9	69.4	70.6	-1.8%
Southern Region	41.4	44.9	48.8	-7.9%
Western Region	19.7	20.3	23.6	-13.7%
Total	195.9	222.8	245.3	-9.2%

Region	Parole Intakes		Parole Discharges		
	Monthly	YTD	Monthly	YTD	LOS
Central Region	13	127	12	163	7.4
Northeast Region	7	95	4	116	7.2
Southern Region	7	69	7	73	7.3
Western Region	2	33	3	40	7.0
Total	29	324	26	392	7.3

