

April 2017 FY 2016-2017 MONTHLY POPULATION REPORT

Prepared by the Division of Youth Corrections (DYC)
Research and Evaluation Unit
May 22nd, 2017



COLORADO

**Office of Children,
Youth & Families**

Division of Youth Corrections

April 2017 DYC Population Report

I. Summary Population Data	1
II. Detention ADP by Facility	2
III. Commitment Services	
A. State and Contract ADP by Facility	3
B. Community/Other Residential ADP by Facility	4
IV. Commitment ADP and New Commitments by Region	5
V. Parole Services	6



April 2017 DYC Population Report

I. Summary Population Data

DETAINED YOUTH

	April 2017		YTD	
	ADP	% change	ADP	LOS
State-Operated	254.4	-4.3%	253.8	15.3 days
Contracted Staff Secure	4.1	145.3%	4.8	15.3 days
Total Detained	258.5	-3.3%	258.5	15.3 days

COMMITTED YOUTH

	April 2017		YTD	
	ADP	% change	ADP	LOS
Secure	400.2	2.2%	381.2	10.7 months
Staff Supervised	196.2	-5.3%	198.6	9.9 months
Community Residential	61.5	4.5%	62.9	5.4 months
Other Residential	6.0	33.4%	6.6	3.2 months
Total Committed Residential	664.0	0.3%	649.3	20.1 months
<i>Committed Residential w/o Boulder</i>	<i>663.0</i>	<i>0.1%</i>	<i>648.2</i>	<i>-</i>

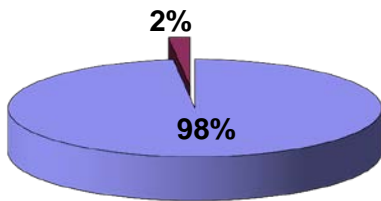
PAROLE YOUTH

	April 2017		YTD	
	ADP	% change	ADP	LOS
Parole	188.3	-4.0%	225.3	7.3 months

TOTAL STATEWIDE ADP

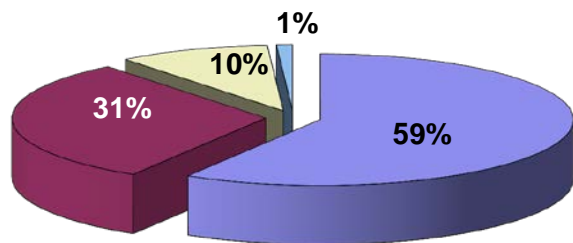
	April 2017		YTD	
	ADP	% change	ADP	LOS
DETENTION	258.5	-3.3%	258.5	15.3 days
COMMITMENT	664.0	0.3%	649.3	20.1 months
PAROLE	188.3	-4.0%	225.3	7.3 months
STATE TOTAL	1,110.8	-1.3%	1,133.1	N/A

**Detention ADP
Year to Date¹**



■ State-Operated ■ Contracted Staff Secure

**Commitment ADP
Year to Date¹**



■ Secure ■ Staff Supervised ■ Community Residential ■ Other Residential

¹ Due to rounding, totals may not add to 100%.

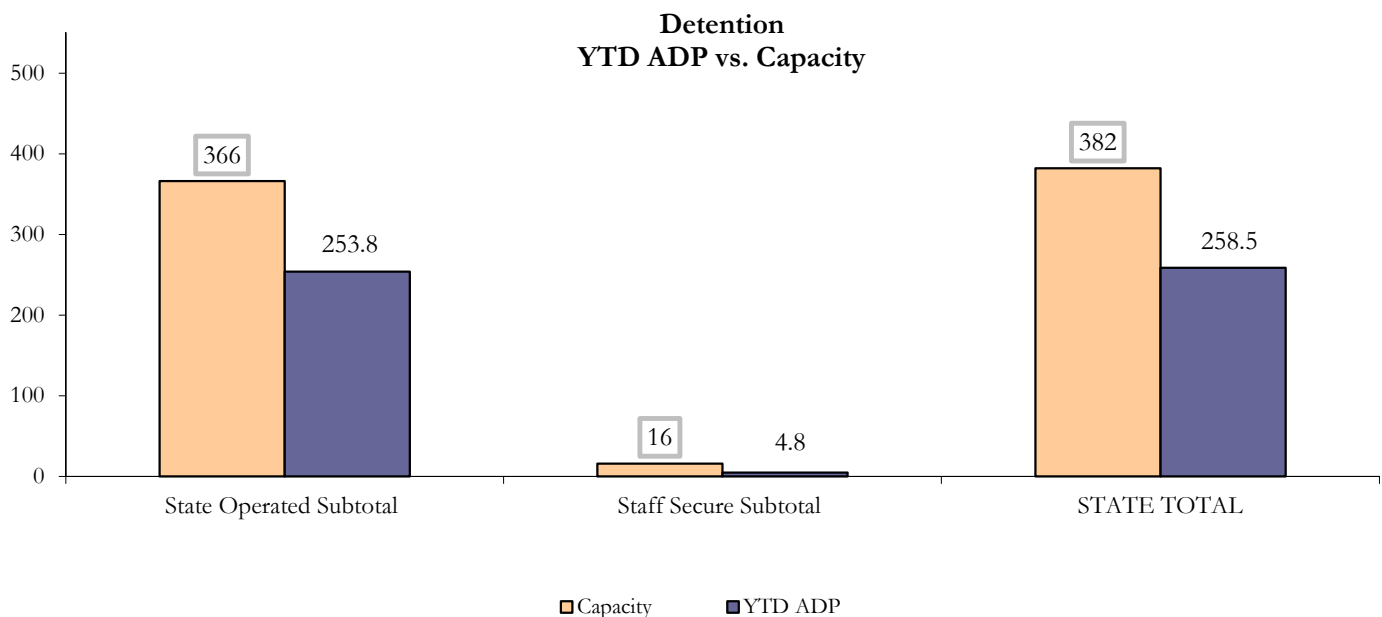
April 2017 DYC Population Report

II. Detention ADP by Facility.

State Operated Detention							
Facility	Operating Capacity	Average Daily Population			New Admissions		LOS (days)
		Monthly	YTD	YTD % of Cap	Monthly	YTD	YTD
Adams	30	21.0	22.3	74.3%	35	418	15.5
Gilliam	64	44.7	45.4	71.0%	69	785	17.6
Grand Mesa	27	18.2	17.9	66.4%	31	296	16.6
Marvin Foote	61	39.9	39.2	64.3%	65	813	14.6
Mount View	41	27.6	24.6	60.1%	51	592	11.9
Platte Valley	64	38.1	40.0	62.4%	80	895	13.4
Pueblo	28	18.5	18.3	65.5%	40	402	13.8
Spring Creek	51	46.4	46.0	90.1%	77	715	18.6
State Subtotal	366	254.4	253.8	69.3%	448	4,916	15.3

Staff Secure Detention							
Facility	Operating Capacity	Average Daily Population			New Admissions		LOS (days)
		Monthly	YTD	YTD % of Cap	Monthly	YTD	YTD
Brown Center	3	1.0	0.5	16.2%	0	13	8.0
Robert DeNier	9	0.1	2.6	29.0%	2	45	17.1
Youthtrack San Luis Valley	4	2.9	1.7	41.4%	5	34	15.4
Staff Secure Subtotal	16	4.1	4.8	29.7%	7	92	15.3

STATEWIDE TOTAL							
	Operating Capacity	Average Daily Population			New Admissions		LOS (days)
		Monthly	YTD	YTD % of Cap	Monthly	YTD	YTD
Total Detention	382	258.5	258.5	67.7%	455	5,008	15.3



April 2017 DYC Population Report

III. Commitment Services

A. State and Contract ADP by Facility

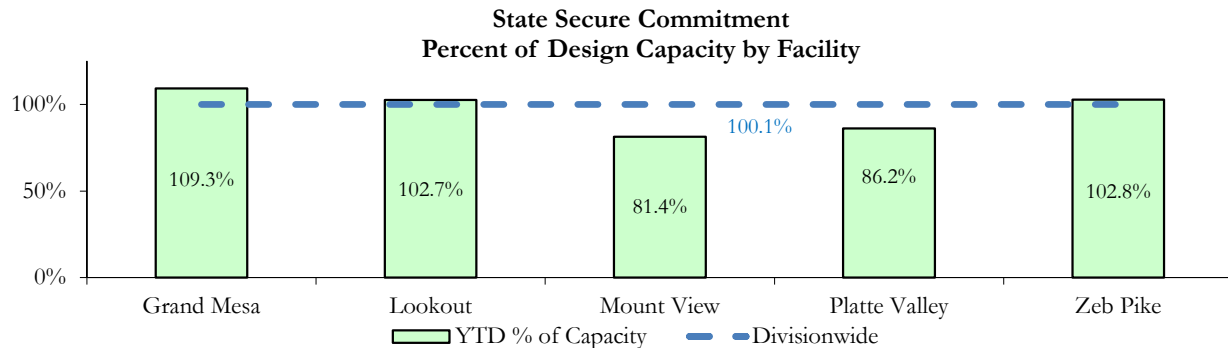
STATE SECURE					
Facility		ADP		Capacity	
		State Secure		Design	
		Monthly	YTD	Capacity	% of YTD
	<i>Adams</i> ¹	0.3	0.4	-	-
	<i>Gilliam</i> ¹	0.2	1.0	-	-
	Grand Mesa	43.4	43.7	40	109.3%
	Lookout	147.2	143.8	140	102.7%
	<i>Marvin Foote</i> ¹	1.0	1.1	-	-
	Mount View	71.7	52.9	65	81.4%
	Platte Valley	55.6	47.4	55	86.2%
	<i>Pueblo</i> ¹	0.0	0.3	-	-
	<i>Spring Creek</i> ²	0.3	8.7	-	-
	Zeb Pike	38.8	39.1	38	102.8%
	Assessment Total	32.2	29.6	-	
	Secure Total	326.4	308.9	-	
	STATE SECURE TOTAL	358.6	338.4	338	100.1%

¹ Detention only facilities with commitment ADP due to committed youth being held in detention prior to transfer.

² Spring Creek was designated a detention only facility effective November 1, 2016 and no longer has commitment capacity allocation.

CONTRACT: PRIVATE SECURE + STAFF SUPERVISED

Facility/Program ²	ADP	
	Monthly	YTD
(Private Secure) Betty K. Marler Center	40.8	37.5
(Private Secure) Robert DeNier	0.8	5.3
Alternative Homes For Youth - Greeley	16.5	14.6
Devereux Cleo Wallace	0.0	0.4
Gateway Residential Program - Delta	3.8	1.5
Hilltop (Residential Youth Services)	3.9	5.7
Jefferson Hills - Aurora	33.4	32.8
Ridge View	125.5	128.1
Robert Brown Center	0.5	1.0
Southern Peaks	5.4	4.8
Third Way Center - Lowry	7.3	9.8
<i>Private Secure & Staff Supervised Subtotal</i>	237.8	241.4



² Programs with both Secure and Community placements are aggregated into one category until further TRAILS builds can allow for programs to register as multiple types.

April 2017 DYC Population Report

III. Commitment Services Continued

B. Community/Other Residential ADP by Facility¹

COMMUNITY RESIDENTIAL		
	<i>Monthly</i>	<i>YTD</i>
Ariel Clinical Services	0.8	1.0
Dale House Project	9.5	8.5
Denver Area Youth Services (DAYS)	3.5	3.5
Gateway Residential Program - Grand Junction	2.0	0.3
Griffith Centers for Children, Inc.	2.1	2.8
Job Corps	1.0	2.8
Kids Crossing	0.9	2.8
Mesa County Community Corrections	3.8	0.9
Mt Evans Qualifying House	7.3	6.3
Reflections for Youth, Inc.-Grismore	0.0	0.4
Savio House	0.0	0.5
Synergy Administration	4.3	5.0
Third Way Center, Bannock	0.0	1.3
Third Way Center, Pontiac	5.9	5.6
Third Way Center, York	3.9	5.1
Third Way Center, Lincoln	5.7	7.4
Turning Point Center, Prospect	5.3	2.4
Turning Point, Mathews St.	5.5	5.5
Whimspire Child Placement	0.0	0.1
Youthtrack, Work and Learn	0.0	0.7
<i>Community Subtotal</i>	<i>61.5</i>	<i>62.9</i>
<i>Private Secure + Staff Supervised + Community Subtotal</i>	<i>299.4</i>	<i>304.3</i>
OTHER RESIDENTIAL		
	<i>Monthly</i>	<i>YTD</i>
CMHI-Ft. Logan	0.0	0.04
CMHI-Pueblo	1.0	0.30
Hospital	0.0	0.10
Immigration Detention Facility	0.0	0.5
Job Corps Parole Program (Federally funded)	1.8	1.4
Other Mental Health Facility	0.0	0.01
Residential Drug/Alcohol Program	0.1	0.13
Residential Mental Health Program	0.7	1.7
Residential Work Program	0.0	0.3
Shelter Care (short term)	0.5	0.4
<i>Other Residential Subtotal²</i>	<i>6.0</i>	<i>6.6</i>
RESIDENTIAL TOTAL	664.0	649.3

¹ Programs with both Secure and Community placements are aggregated into one category until further TRAILS builds can allow for programs to register as multiple types.

² Due to relatively few youth referred to these types of placements, the Other Residential Subtotals may not be the sum of individual placements; this is typically the result of rounding errors and the method by which ADP is calculated.

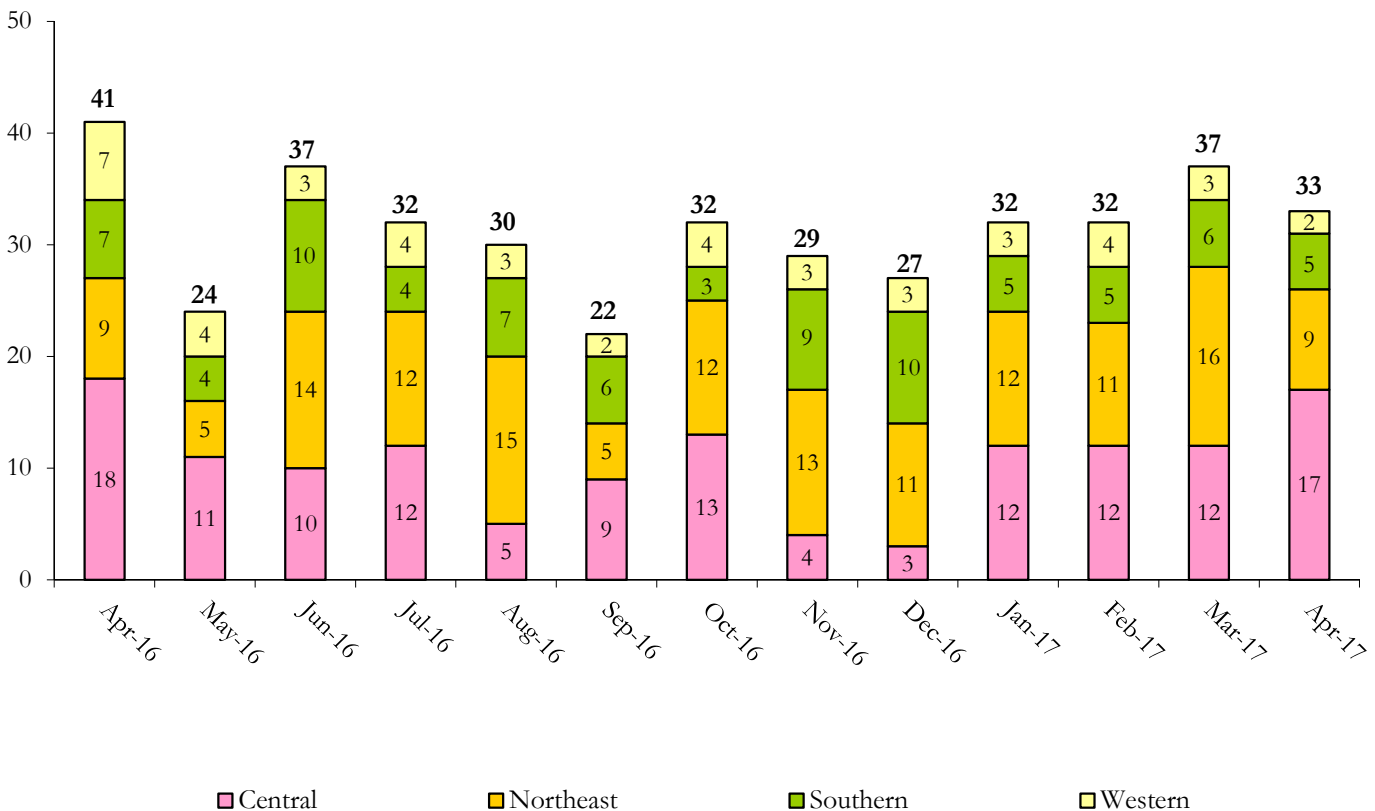
April 2017 DYC Population Report

IV. Commitment ADP and New Commitments

COMMITMENT ADP				
Region	Monthly		YTD	
	April	% Change	April	% Change from Prior FY
Central Region	258.9	0.5%	261.3	-13.2%
Northeast Region	199.5	0.5%	187.2	-2.8%
Southern Region	137.8	0.3%	136.5	-4.9%
Western Region	67.7	-1.1%	64.2	4.1%
Commitment ADP	664.0	0.3%	649.3	-7.1%

NEW COMMITMENTS					
	FY 16-17		FY 15-16		% Change from last YTD
	April	YTD	April	YTD	
Central Region	17	102	18	124	-17.7%
Northeast Region	9	120	9	97	23.7%
Southern Region	5	63	7	59	6.8%
Western Region	2	34	7	34	0.0%
TOTAL	33	319	41	314	1.6%

Monthly New Commitments



April 2017 DYC Population Report

V. Parole Services

PAROLE ADP				
Region	Monthly	YTD		% Change from prev YTD
		FY 16-17	FY 15-16	
Central Region	75.4	89.4	102.9	-13.1%
Northeast Region	53.5	70.2	71.0	-1.2%
Southern Region	38.7	45.3	48.2	-6.1%
Western Region	20.6	20.4	23.4	-12.9%
Total	188.3	225.3	245.6	-8.3%

Region	Parole Intakes		Parole Discharges		
	Monthly	YTD	Monthly	YTD	LOS
Central Region	10	114	15	150	7.4
Northeast Region	12	87	6	109	7.1
Southern Region	8	62	8	66	7.4
Western Region	4	31	8	37	6.9
Total	34	294	37	362	7.3

