

# March 2017 FY 2016-2017 MONTHLY POPULATION REPORT

---

Prepared by the Division of Youth Corrections (DYC)  
Research and Evaluation Unit  
April 26th, 2017



**COLORADO**

**Office of Children,  
Youth & Families**

Division of Youth Corrections

# March 2017 DYC Population Report

<b>I. Summary Population Data</b>	<b>1</b>
<b>II. Detention ADP by Facility</b>	<b>2</b>
<b>III. Commitment Services</b>	
A. State and Contract ADP by Facility	3
B. Community/Other Residential ADP by Facility	4
<b>IV. Commitment ADP and New Commitments by Region</b>	<b>5</b>
<b>V. Parole Services</b>	<b>6</b>



# March 2017 DYC Population Report

## I. Summary Population Data

### DETAINED YOUTH

	March 2017		YTD	
	ADP	% change	ADP	LOS
State-Operated	265.7	-6.5%	254.8	15.2 days
Contracted Staff Secure	1.7	208.0%	4.8	15.4 days
<b>Total Detained</b>	<b>267.4</b>	<b>-6.1%</b>	<b>259.6</b>	<b>15.2 days</b>

### COMMITTED YOUTH

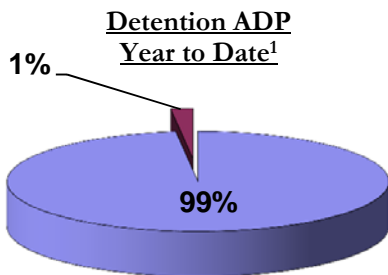
	March 2017		YTD	
	ADP	% change	ADP	LOS
Secure	391.5	2.0%	379.1	10.4 months
Staff Supervised	207.2	3.5%	198.9	10.0 months
Community Residential	58.9	12.2%	63.2	5.6 months
Other Residential	4.5	-23.8%	6.5	2.7 months
<b>Total Committed Residential</b>	<b>662.1</b>	<b>3.1%</b>	<b>647.7</b>	<b>19.9 months</b>
<i>Committed Residential w/o Boulder</i>	<i>662.0</i>	<i>3.0%</i>	<i>646.6</i>	<i>-</i>

### PAROLE YOUTH

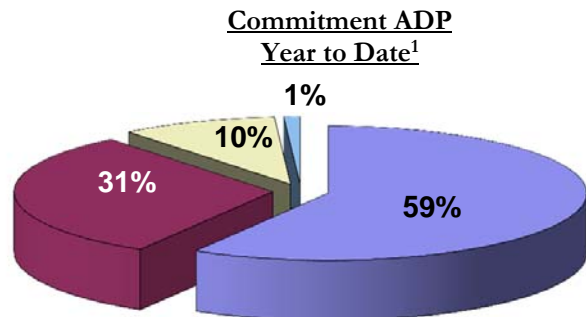
Parole	March 2017		YTD	
	ADP	% change	ADP	LOS
	196.1	-9.3%	230.1	7.4 months

### TOTAL STATEWIDE ADP

	March 2017		YTD	
	ADP	% change	ADP	LOS
DETENTION	267.4	-6.1%	259.6	15.2 days
COMMITMENT	662.1	3.1%	647.7	19.9 months
PAROLE	196.1	-9.3%	230.1	7.4 months
<b>STATE TOTAL</b>	<b>1,125.5</b>	<b>-1.6%</b>	<b>1,137.5</b>	<b>N/A</b>



■ State-Operated   ■ Contracted Staff Secure



■ Secure   ■ Staff Supervised   ■ Community Residential   ■ Other Residential

<sup>1</sup> Due to rounding, totals may not add to 100%.

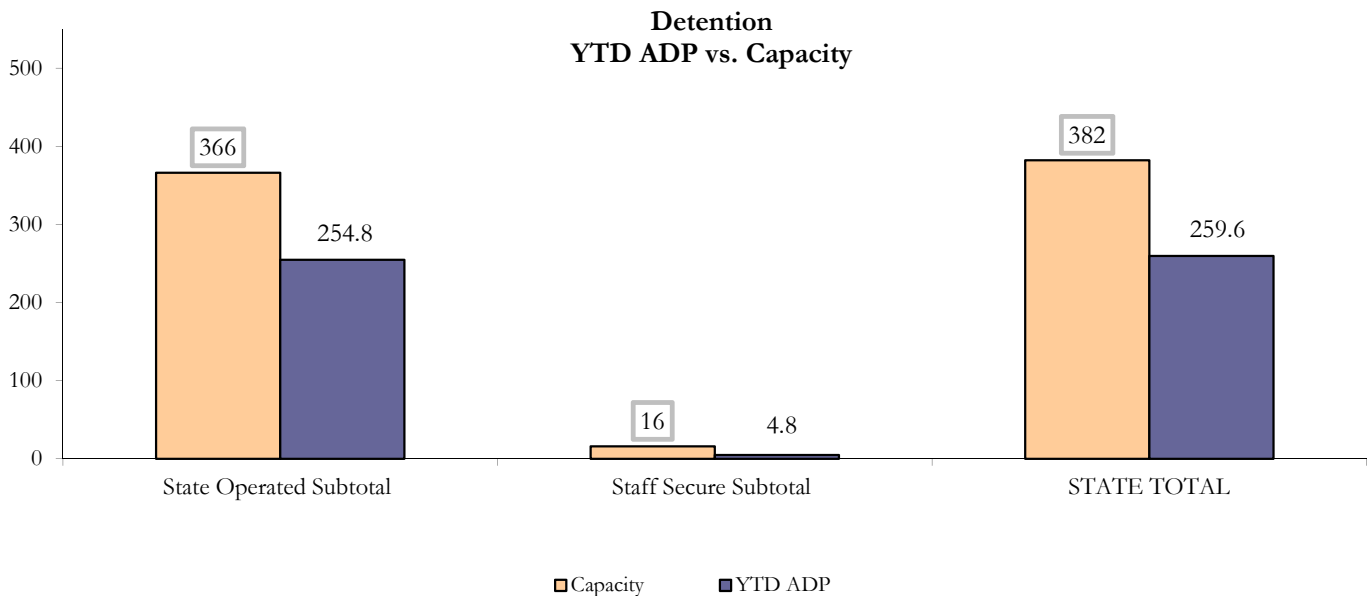
# March 2017 DYC Population Report

## II. Detention ADP by Facility

State Operated Detention							
Facility	Operating Capacity	Average Daily Population			New Admissions		LOS (days)
		Monthly	YTD	YTD % of Cap	Monthly	YTD	YTD
Adams	30	19.7	22.4	74.7%	37	383	15.6
Gilliam	64	52.0	45.5	71.1%	83	716	17.7
Grand Mesa	27	19.3	17.9	66.3%	27	265	17.2
Marvin Foote	61	41.8	39.8	65.3%	89	749	14.2
Mount View	41	29.5	24.4	59.4%	66	542	11.6
Platte Valley	64	35.7	40.2	62.8%	85	815	13.5
Pueblo	28	19.5	18.4	65.6%	54	362	14.2
Spring Creek	51	48.2	46.3	90.7%	71	638	18.6
<b>State Subtotal</b>	<b>366</b>	<b>265.7</b>	<b>254.8</b>	<b>69.6%</b>	<b>512</b>	<b>4,470</b>	<b>15.2</b>

Staff Secure Detention							
Facility	Operating Capacity	Average Daily Population			New Admissions		LOS (days)
		Monthly	YTD	YTD % of Cap	Monthly	YTD	YTD
Brown Center	3	0.8	0.4	14.3%	1	13	8.0
Robert DeNier	9	0.0	2.9	32.0%	0	43	17.4
Youthtrack San Luis Valley	4	0.9	1.5	37.9%	6	29	15.4
<b>Staff Secure Subtotal</b>	<b>16</b>	<b>1.7</b>	<b>4.8</b>	<b>30.2%</b>	<b>7</b>	<b>85</b>	<b>15.4</b>

STATEWIDE TOTAL							
	Operating Capacity	Average Daily Population			New Admissions		LOS (days)
		Monthly	YTD	YTD % of Cap	Monthly	YTD	YTD
<b>Total Detention</b>	<b>382</b>	<b>267.4</b>	<b>259.6</b>	<b>68.0%</b>	<b>519</b>	<b>4,555</b>	<b>15.2</b>



# March 2017 DYC Population Report

## III. Commitment Services

### A. State and Contract ADP by Facility

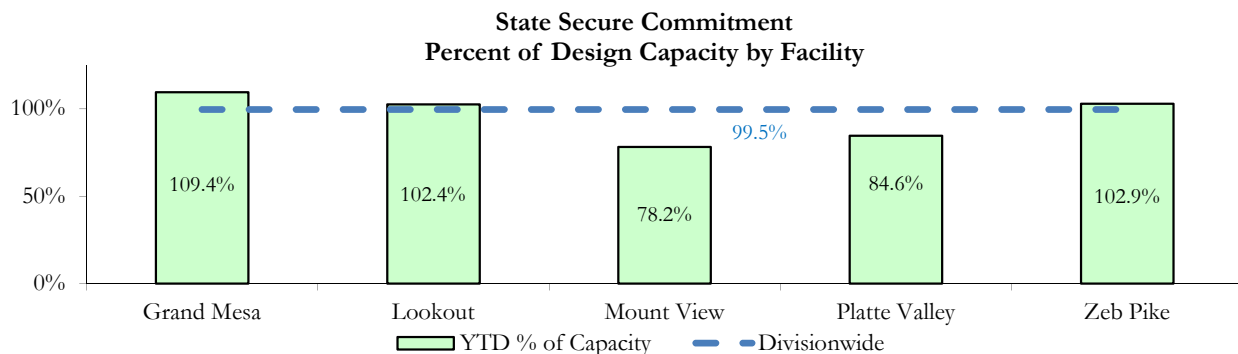
STATE SECURE					
Facility		ADP		Capacity	
		State Secure		Design	
		Monthly	YTD	Capacity	% of YTD
	<i>Adams</i> <sup>1</sup>	0.0	0.4	-	-
	<i>Gilliam</i> <sup>1</sup>	0.0	1.1	-	-
	Grand Mesa	43.3	43.8	40	109.4%
	Lookout	147.3	143.4	140	102.4%
	<i>Marvin Foote</i> <sup>1</sup>	0.4	1.1	-	-
	Mount View	65.0	50.9	65	78.2%
	Platte Valley	54.4	46.5	55	84.6%
	<i>Pueblo</i> <sup>1</sup>	0.2	0.3	-	-
	<i>Spring Creek</i> <sup>2</sup>	1.2	9.6	-	-
	Zeb Pike	39.6	39.1	38	102.9%
	<b>Assessment Total</b>	<b>34.9</b>	<b>29.3</b>	-	
	<b>Secure Total</b>	<b>316.4</b>	<b>306.9</b>	-	
	<b>STATE SECURE TOTAL</b>	<b>351.3</b>	<b>336.2</b>	<b>338</b>	<b>99.5%</b>

<sup>1</sup> Detention only facilities with commitment ADP due to committed youth being held in detention prior to transfer.

<sup>2</sup> Spring Creek was designated a detention only facility effective November 1, 2016 and no longer has commitment capacity allocation.

### CONTRACT: PRIVATE SECURE + STAFF SUPERVISED

Facility/Program <sup>2</sup>	ADP	
	Monthly	YTD
(Private Secure) Betty K. Marler Center	40.2	37.1
(Private Secure) Robert DeNier	0.0	5.7
Alternative Homes For Youth - Greeley	18.6	14.4
Devereux Cleo Wallace	0.0	0.5
Gateway Residential Program - Delta	4.0	1.2
Hilltop (Residential Youth Services)	5.3	5.9
Jefferson Hills - Aurora	35.0	32.8
Ridge View	130.5	128.3
Robert Brown Center	1.5	1.0
Southern Peaks	5.5	4.7
Third Way Center - Lowry	6.9	10.0
<i>Private Secure &amp; Staff Supervised Subtotal</i>	<b>247.3</b>	<b>241.7</b>



<sup>2</sup> Programs with both Secure and Community placements are aggregated into one category until further TRAILS builds can allow for programs to register as multiple types.

# March 2017 DYC Population Report

## III. Commitment Services Continued

### B. Community/Other Residential ADP by Facility<sup>1</sup>

<b>COMMUNITY RESIDENTIAL</b>		
	<i>Monthly</i>	<i>YTD</i>
Ariel Clinical Services	0.7	1.0
Dale House Project	7.7	8.4
Denver Area Youth Services (DAYS)	2.5	3.5
Gateway Residential Program - Grand Junction	0.7	0.1
Griffith Centers for Children, Inc.	1.4	2.9
Job Corps	2.0	3.1
Kids Crossing	2.0	3.1
Mesa County Community Corrections	2.4	0.5
Mt Evans Qualifying House	5.4	6.2
Reflections for Youth, Inc.-Grismore	0.0	0.5
Savio House	0.0	0.6
Synergy Administration	6.5	5.1
Third Way Center, Bannock	0.0	1.5
Third Way Center, Pontiac	6.9	5.5
Third Way Center, York	5.0	5.3
Third Way Center, Lincoln	7.3	7.6
Turning Point Center, Prospect	3.6	2.1
Turning Point, Mathews St.	4.8	5.5
Whimspire Child Placement	0.0	0.1
Youthtrack, Work and Learn	0.0	0.7
<i>Community Subtotal</i>	<i>58.9</i>	<i>63.2</i>
<b><i>Private Secure + Staff Supervised + Community Subtotal</i></b>	<b><i>306.2</i></b>	<b><i>305.0</i></b>
<b>OTHER RESIDENTIAL</b>		
	<i>Monthly</i>	<i>YTD</i>
CMHI-Ft. Logan	0.0	0.04
CMHI-Pueblo	1.2	0.22
Hospital	0.0	0.11
Immigration Detention Facility	0.0	0.6
Job Corps Parole Program (Federally funded)	2.0	1.3
Other Mental Health Facility	0.0	0.01
Residential Drug/Alcohol Program	1.0	0.24
Residential Mental Health Program	0.0	1.8
Residential Work Program	0.0	0.4
Shelter Care (short term)	1.0	0.4
<i>Other Residential Subtotal<sup>2</sup></i>	<i>4.5</i>	<i>6.5</i>
<b>RESIDENTIAL TOTAL</b>		
	<b>662.1</b>	<b>647.7</b>

<sup>1</sup> Programs with both Secure and Community placements are aggregated into one category until further TRAILS builds can allow for programs to register as multiple types.

<sup>2</sup> Due to relatively few youth referred to these types of placements, the Other Residential Subtotals may not be the sum of individual placements; this is typically the result of rounding errors and the method by which ADP is calculated.

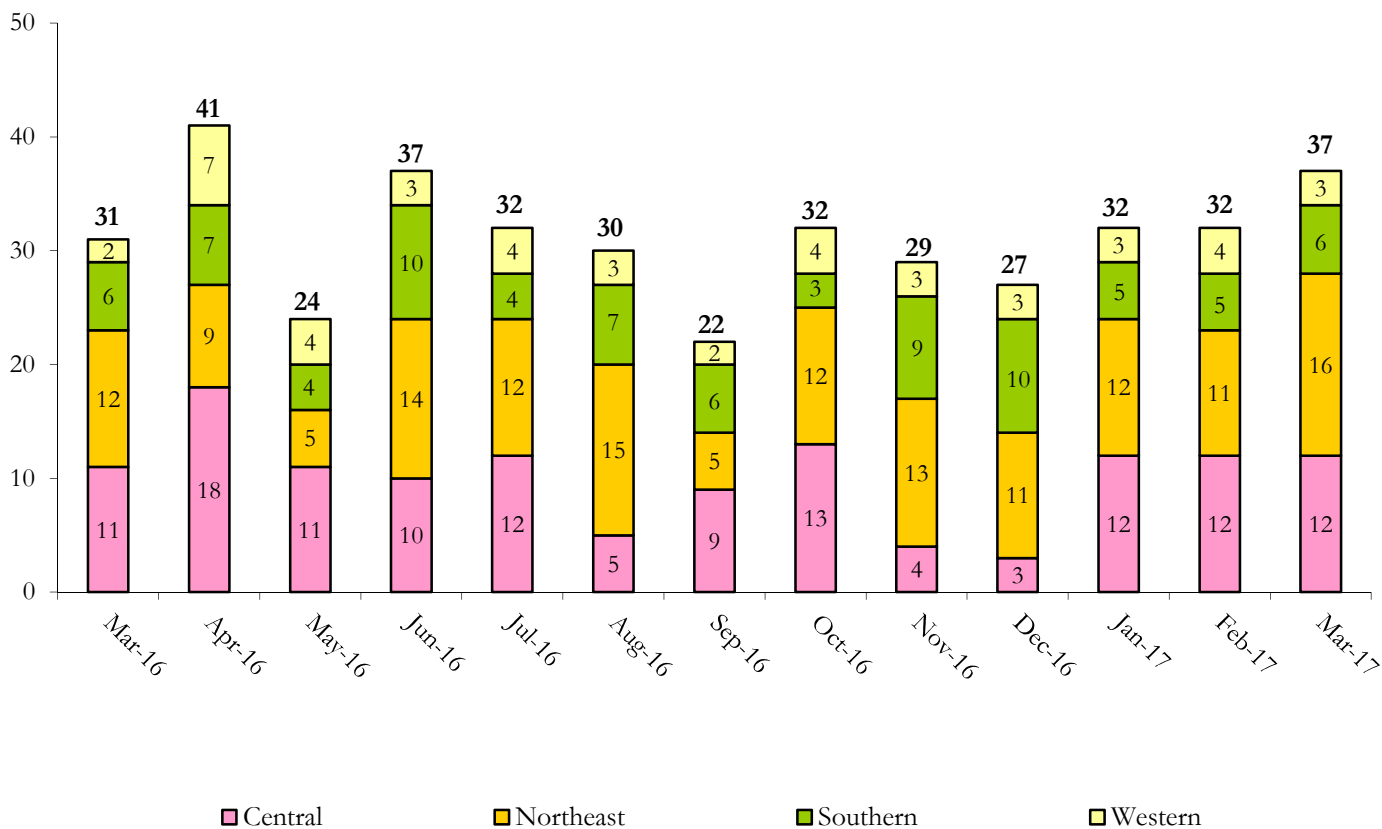
# March 2017 DYC Population Report

## IV. Commitment ADP and New Commitments by Region

COMMITMENT ADP				
Region	Monthly		YTD	
	March	% Change	March	% Change from Prior FY
Central Region	257.7	2.7%	262.3	-12.7%
Northeast Region	198.5	2.0%	185.9	-3.3%
Southern Region	137.4	4.1%	136.4	-6.7%
Western Region	68.4	5.4%	63.1	1.3%
<b>Commitment ADP</b>	<b>662.1</b>	<b>3.1%</b>	<b>647.7</b>	<b>-7.7%</b>

NEW COMMITMENTS					
	FY 16-17		FY 15-16		% Change from last YTD
	March	YTD	March	YTD	
Central Region	12	85	11	106	-19.8%
Northeast Region	16	110	12	88	25.0%
Southern Region	6	58	6	51	13.7%
Western Region	3	32	2	27	18.5%
<b>TOTAL</b>	<b>37</b>	<b>285</b>	<b>31</b>	<b>272</b>	<b>4.8%</b>

### Monthly New Commitments



# March 2017 DYC Population Report

## V. Parole Services

PAROLE ADP				
Region	Monthly	YTD		% Change from prev YTD
		FY 16-17	FY 15-16	
Central Region	74.4	91.0	102.3	-11.0%
Northeast Region	57.8	72.3	70.5	2.5%
Southern Region	41.4	46.6	47.8	-2.6%
Western Region	22.5	20.2	23.5	-13.7%
<b>Total</b>	<b>196.1</b>	<b>230.1</b>	<b>244.0</b>	<b>-5.7%</b>

Region	Parole Intakes		Parole Discharges		
	Monthly	YTD	Monthly	YTD	LOS
Central Region	8	105	8	135	7.5
Northeast Region	8	75	14	99	7.3
Southern Region	3	55	7	57	7.7
Western Region	3	26	0	29	6.9
<b>Total</b>	<b>22</b>	<b>261</b>	<b>29</b>	<b>320</b>	<b>7.4</b>

