

February 2017 FY 2016-2017 MONTHLY POPULATION REPORT

Prepared by the Division of Youth Corrections (DYC)
Research and Evaluation Unit
March 29th, 2017



COLORADO

**Office of Children,
Youth & Families**

Division of Youth Corrections

February 2017 DYC Population Report

| | |
|---|----------|
| I. Summary Population Data | 1 |
| II. Detention ADP by Facility | 2 |
| III. Commitment Services | |
| A. State and Contract ADP by Facility | 3 |
| B. Community/Other Residential ADP by Facility | 4 |
| IV. Commitment ADP and New Commitments by Region | 5 |
| V. Parole Services | 6 |



February 2017 DYC Population Report

I. Summary Population Data

DETAINED YOUTH

| | February 2017 | | YTD | |
|-------------------------|---------------|-------------|--------------|------------------|
| | ADP | % change | ADP | LOS |
| State-Operated | 284.3 | 7.1% | 253.6 | 15.2 days |
| Contracted Staff Secure | 0.5 | -84.7% | 5.2 | 15.9 days |
| Total Detained | 284.8 | 5.9% | 258.8 | 15.2 days |

COMMITTED YOUTH

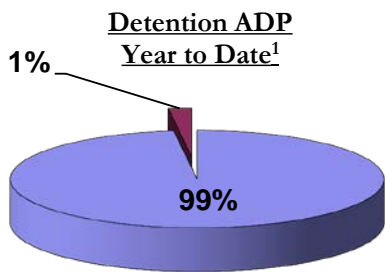
| | February 2017 | | YTD | |
|--|---------------|-------------|--------------|--------------------|
| | ADP | % change | ADP | LOS |
| Secure | 383.8 | 3.5% | 376.3 | 10.4 months |
| Staff Supervised | 200.2 | 1.9% | 198.1 | 10.2 months |
| Community Residential | 52.5 | -7.5% | 63.8 | 5.7 months |
| Other Residential | 5.9 | -22.2% | 7.1 | 2.9 months |
| Total Committed Residential | 642.4 | 1.7% | 645.3 | 20.2 months |
| <i>Committed Residential w/o Boulder</i> | <i>642.4</i> | <i>1.7%</i> | <i>644.0</i> | - |

PAROLE YOUTH

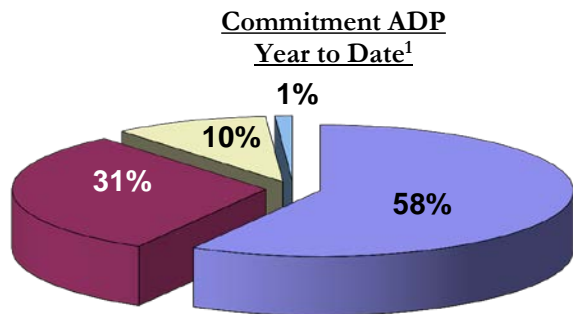
| | February 2017 | | YTD | |
|--------|---------------|----------|-------|------------|
| | ADP | % change | ADP | LOS |
| Parole | 216.2 | -1.8% | 234.1 | 7.3 months |

TOTAL STATEWIDE ADP

| | February 2017 | | YTD | |
|--------------------|----------------|--------------|----------------|--------------------|
| | ADP | % change | ADP | LOS |
| DETENTION | 284.8 | 5.9% | 258.8 | 15.2 days |
| COMMITMENT | 642.4 | 1.7% | 645.3 | 20.2 months |
| PAROLE | 216.2 | -1.8% | 234.1 | 7.3 months |
| STATE TOTAL | 1,143.4 | 2.0% | 1,138.1 | N/A |



■ State-Operated ■ Contracted Staff Secure



■ Secure ■ Staff Supervised ■ Community Residential ■ Other Residential

¹ Due to rounding, totals may not add to 100%.

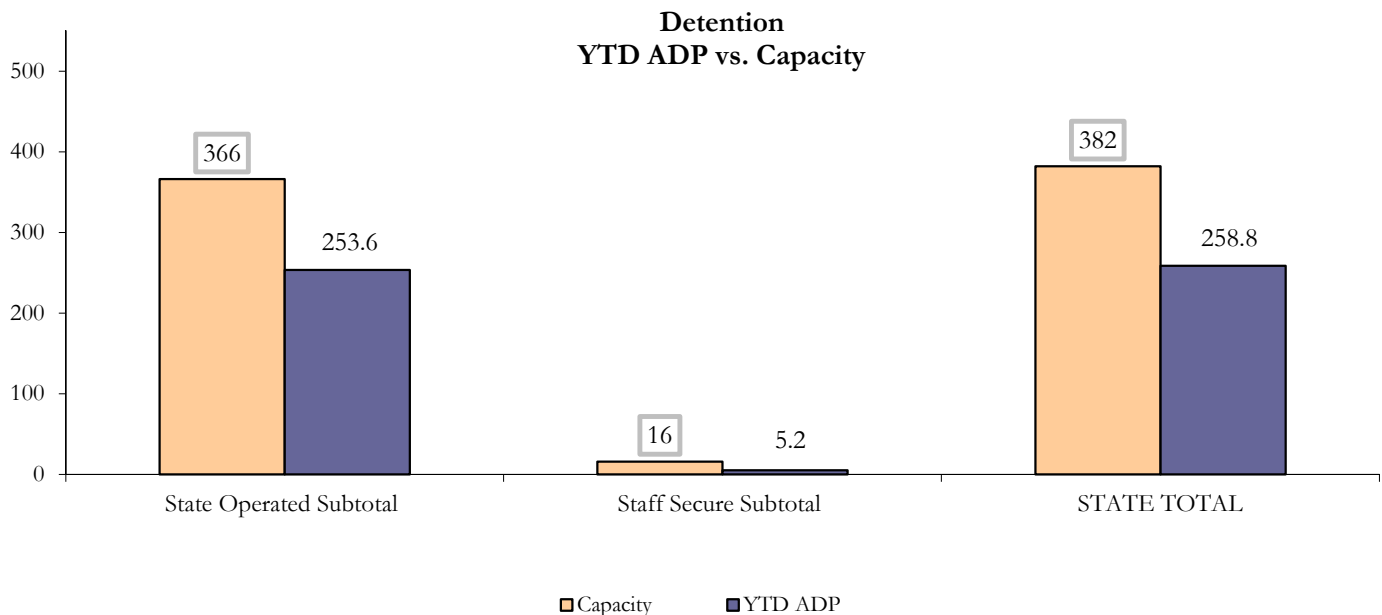
February 2017 DYC Population Report

II. Detention ADP by Facility

| State Operated Detention | | | | | | | |
|--------------------------|--------------------|--------------------------|--------------|--------------|----------------|--------------|-------------|
| Facility | Operating Capacity | Average Daily Population | | | New Admissions | | LOS (days) |
| | | Monthly | YTD | YTD % of Cap | Monthly | YTD | YTD |
| Adams | 30 | 23.4 | 22.8 | 75.9% | 38 | 346 | 15.1 |
| Gilliam | 64 | 48.4 | 44.7 | 69.8% | 96 | 633 | 17.9 |
| Grand Mesa | 27 | 25.4 | 17.7 | 65.7% | 30 | 238 | 17.4 |
| Marvin Foote | 61 | 51.5 | 39.6 | 64.8% | 78 | 661 | 13.9 |
| Mount View | 41 | 30.0 | 23.8 | 58.1% | 58 | 477 | 11.5 |
| Platte Valley | 64 | 40.9 | 40.7 | 63.7% | 80 | 730 | 13.6 |
| Pueblo | 28 | 16.9 | 18.2 | 65.0% | 31 | 308 | 14.2 |
| Spring Creek | 51 | 47.8 | 46.0 | 90.3% | 56 | 567 | 18.4 |
| State Subtotal | 366 | 284.3 | 253.6 | 69.3% | 467 | 3,960 | 15.2 |

| Staff Secure Detention | | | | | | | |
|------------------------------|--------------------|--------------------------|------------|--------------|----------------|-----------|-------------|
| Facility | Operating Capacity | Average Daily Population | | | New Admissions | | LOS (days) |
| | | Monthly | YTD | YTD % of Cap | Monthly | YTD | YTD |
| Brown Center | 3 | 0.3 | 0.4 | 12.9% | 1 | 12 | 8.0 |
| Robert DeNier | 9 | 0.0 | 3.2 | 36.1% | 0 | 43 | 17.4 |
| Youthtrack San Luis Valley | 4 | 0.2 | 1.6 | 40.0% | 0 | 23 | 17.0 |
| Staff Secure Subtotal | 16 | 0.5 | 5.2 | 32.7% | 1 | 78 | 15.9 |

| STATEWIDE TOTAL | | | | | | | |
|------------------------|--------------------|--------------------------|--------------|--------------|----------------|--------------|-------------|
| | Operating Capacity | Average Daily Population | | | New Admissions | | LOS (days) |
| | | Monthly | YTD | YTD % of Cap | Monthly | YTD | YTD |
| Total Detention | 382 | 284.8 | 258.8 | 67.7% | 468 | 4,038 | 15.2 |



February 2017 DYC Population Report

III. Commitment Services

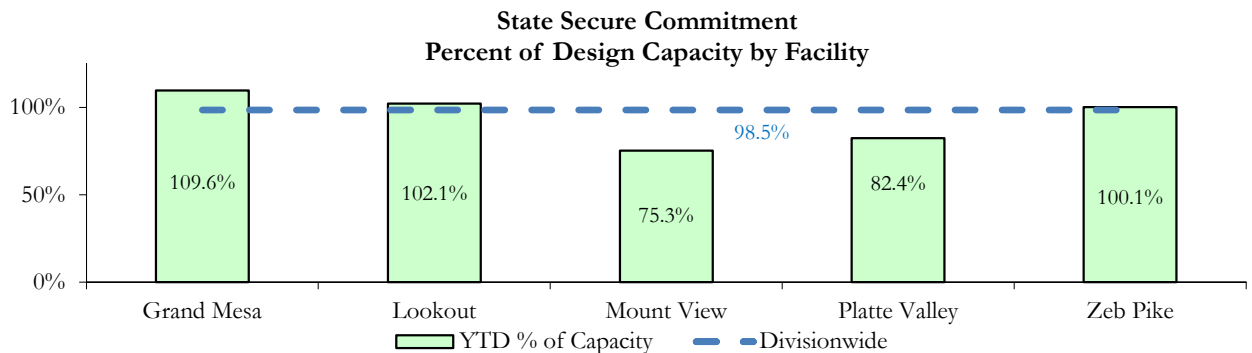
A. State and Contract ADP by Facility

| STATE SECURE | | | | |
|---------------------------|--------------|--------------|------------|--------------|
| Facility | ADP | | Capacity | |
| | State Secure | | Design | |
| | Monthly | YTD | Capacity | % of YTD |
| Adams ¹ | 0.0 | 0.5 | - | - |
| Gilliam ¹ | 0.8 | 1.3 | - | - |
| Grand Mesa | 43.4 | 43.8 | 40 | 109.6% |
| Lookout | 147.6 | 142.9 | 140 | 102.1% |
| Marvin Foote ¹ | 2.0 | 1.2 | - | - |
| Mount View | 56.6 | 49.0 | 65 | 75.3% |
| Platte Valley | 53.2 | 45.3 | 55 | 82.4% |
| Pueblo ¹ | 1.5 | 0.4 | - | - |
| Spring Creek ² | 1.1 | 10.7 | - | - |
| Zeb Pike | 38.6 | 38.0 | 38 | 100.1% |
| Assessment Total | 29.8 | 28.5 | - | |
| Secure Total | 315.2 | 304.6 | - | |
| STATE SECURE TOTAL | 345.0 | 333.1 | 338 | 98.5% |

¹ Detention only facilities with commitment ADP due to committed youth being held in detention prior to transfer.

² Spring Creek was designated a detention only facility effective November 1, 2016 and no longer has commitment capacity allocation.

| CONTRACT: PRIVATE SECURE + STAFF SUPERVISED | | |
|---|--------------|--------------|
| Facility/Program ² | ADP | |
| | Monthly | YTD |
| (Private Secure) Betty K. Marler Center | 38.8 | 36.7 |
| (Private Secure) Robert DeNier | 0.0 | 6.5 |
| Alternative Homes For Youth - Greeley | 16.3 | 13.8 |
| Devereux Cleo Wallace | 0.0 | 0.5 |
| Gateway Residential Program - Delta | 2.0 | 0.9 |
| Hilltop (Residential Youth Services) | 7.4 | 6.0 |
| Jefferson Hills - Aurora | 33.6 | 32.5 |
| Ridge View | 127.8 | 128.4 |
| Robert Brown Center | 0.0 | 1.0 |
| Southern Peaks | 6.7 | 4.6 |
| Third Way Center - Lowry | 6.5 | 10.4 |
| <i>Private Secure & Staff Supervised Subtotal</i> | 239.1 | 241.3 |



² Programs with both Secure and Community placements are aggregated into one category until further TRAILS builds can allow for programs to register as multiple types.

February 2017 DYC Population Report

III. Commitment Services Continued

B. Community/Other Residential ADP by Facility¹

| COMMUNITY RESIDENTIAL | | |
|---|----------------|--------------|
| | <i>Monthly</i> | <i>YTD</i> |
| Ariel Clinical Services | 1.9 | 1.1 |
| Dale House Project | 5.2 | 8.5 |
| Denver Area Youth Services (DAYS) | 2.5 | 3.7 |
| Griffith Centers for Children, Inc. | 0.6 | 3.1 |
| Job Corps | 1.8 | 3.2 |
| Kids Crossing | 2.0 | 3.3 |
| Mesa County Community Corrections | 1.0 | 0.3 |
| Mt Evans Qualifying House | 4.3 | 6.3 |
| Reflections for Youth, Inc.-Grismore | 0.0 | 0.5 |
| Savio House | 0.0 | 0.6 |
| Synergy Administration | 6.2 | 4.9 |
| Third Way Center, Bannock | 0.3 | 1.6 |
| Third Way Center, Pontiac | 6.0 | 5.4 |
| Third Way Center, York | 5.7 | 5.4 |
| Third Way Center, Lincoln | 7.7 | 7.5 |
| Turning Point Center, Prospect | 2.4 | 1.6 |
| Turning Point, Mathews St. | 5.0 | 5.9 |
| Whimspire Child Placement | 0.0 | 0.1 |
| Youthtrack, Work and Learn | 0.0 | 0.8 |
| <i>Community Subtotal</i> | <i>52.5</i> | <i>63.8</i> |
| | | |
| <i>Private Secure + Staff Supervised + Community Subtotal</i> | <i>291.5</i> | <i>305.1</i> |
| OTHER RESIDENTIAL | | |
| | <i>Monthly</i> | <i>YTD</i> |
| CMHI-Ft. Logan | 0.0 | 0.05 |
| CMHI-Pueblo | 0.5 | 0.10 |
| Hospital | 0.0 | 0.12 |
| Immigration Detention Facility | 0.0 | 0.7 |
| Job Corps Parole Program (Federally funded) | 2.5 | 1.2 |
| Other Mental Health Facility | 0.0 | 0.01 |
| Residential Drug/Alcohol Program | 1.0 | 0.15 |
| Residential Mental Health Program | 0.4 | 2.0 |
| Residential Work Program | 0.0 | 0.4 |
| Shelter Care (short term) | 1.2 | 0.3 |
| <i>Other Residential Subtotal²</i> | <i>5.9</i> | <i>7.1</i> |
| RESIDENTIAL TOTAL | | |
| | 642.4 | 645.3 |

¹ Programs with both Secure and Community placements are aggregated into one category until further TRAILS builds can allow for programs to register as multiple types.

² Due to relatively few youth referred to these types of placements, the Other Residential Subtotals may not be the sum of individual placements; this is typically the result of rounding errors and the method by which ADP is calculated.

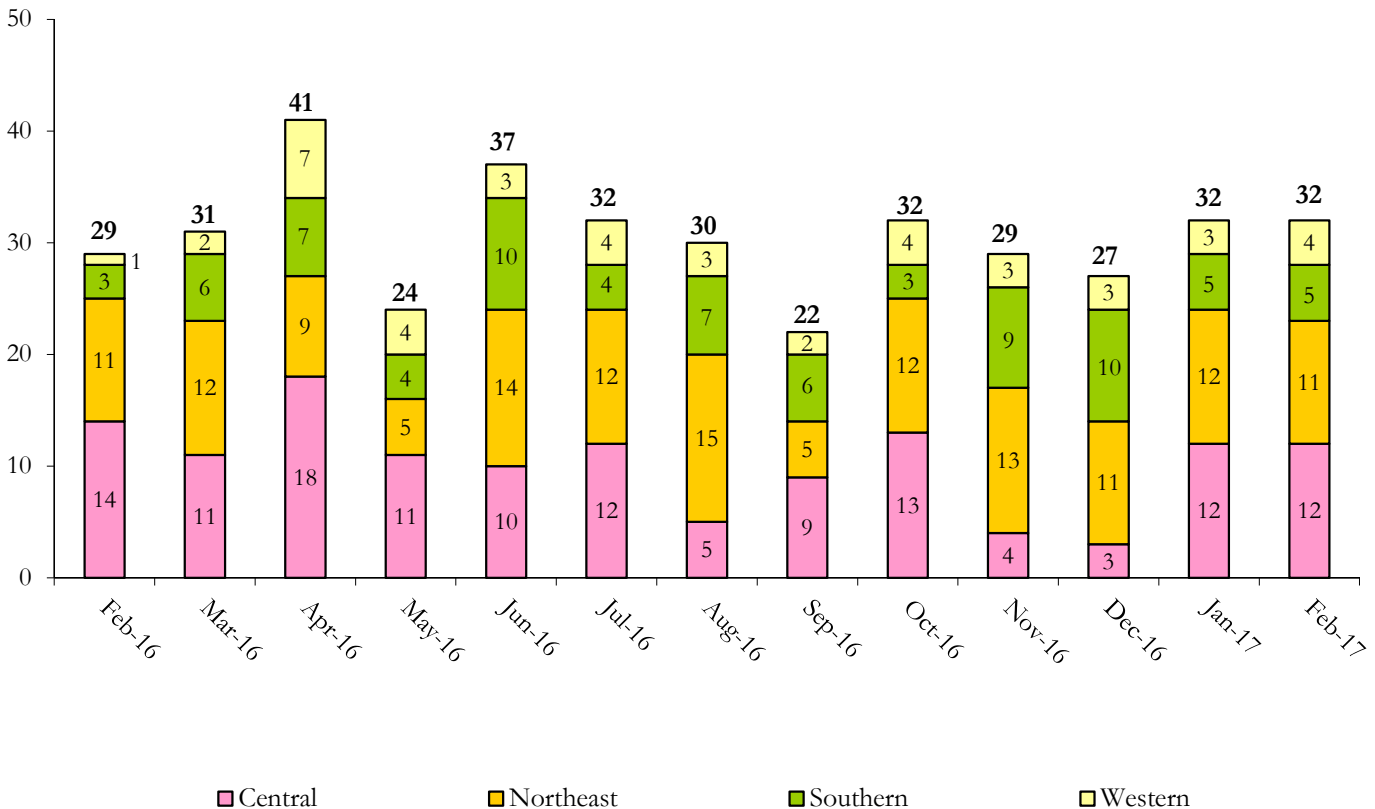
February 2017 DYC Population Report

IV. Commitment ADP and New Commitments by Region

| COMMITMENT ADP | | | | |
|-----------------------|--------------|-------------|--------------|------------------------|
| Region | Monthly | | YTD | |
| | February | % Change | February | % Change from Prior FY |
| Central Region | 250.9 | 4.2% | 262.0 | -13.2% |
| Northeast Region | 194.6 | -1.0% | 184.7 | -3.5% |
| Southern Region | 132.0 | 0.1% | 136.2 | -8.1% |
| Western Region | 64.9 | 4.1% | 62.4 | -0.9% |
| Commitment ADP | 642.4 | 1.7% | 645.3 | -8.4% |

| NEW COMMITMENTS | | | | | |
|------------------|-----------|------------|-----------|------------|------------------------|
| | FY 16-17 | | FY 15-16 | | % Change from last YTD |
| | February | YTD | February | YTD | |
| Central Region | 12 | 73 | 14 | 93 | -21.5% |
| Northeast Region | 11 | 93 | 11 | 76 | 22.4% |
| Southern Region | 5 | 51 | 3 | 45 | 13.3% |
| Western Region | 4 | 29 | 1 | 25 | 16.0% |
| TOTAL | 32 | 246 | 29 | 239 | 2.9% |

Monthly New Commitments



February 2017 DYC Population Report

V. Parole Services

| PAROLE ADP | | | | |
|------------------|--------------|--------------|--------------|---------------------------|
| Region | Monthly | YTD | | % Change from prev YTD |
| | | FY 16-17 | FY 15-16 | |
| Central Region | 82.6 | 93.3 | 102.1 | -8.7% |
| Northeast Region | 65.8 | 74.1 | 70.4 | 5.2% |
| Southern Region | 47.6 | 46.8 | 47.6 | -1.7% |
| Western Region | 20.3 | 20.0 | 23.7 | -15.9% |
| Total | 216.2 | 234.1 | 243.8 | -4.0% |

| Region | Parole Intakes | | Parole Discharges | | LOS |
|------------------|----------------|------------|-------------------|------------|------------|
| | Monthly | YTD | Monthly | YTD | |
| Central Region | 9 | 97 | 16 | 125 | 7.5 |
| Northeast Region | 4 | 66 | 12 | 82 | 6.8 |
| Southern Region | 3 | 52 | 7 | 50 | 7.8 |
| Western Region | 2 | 23 | 3 | 29 | 6.9 |
| Total | 18 | 238 | 38 | 286 | 7.3 |

