

January 2017 FY 2016-2017 MONTHLY POPULATION REPORT

Prepared by the Division of Youth Corrections (DYC)
Research and Evaluation Unit
March 1st, 2017



COLORADO

**Office of Children,
Youth & Families**

Division of Youth Corrections

January 2017 DYC Population Report

I. Summary Population Data	1
II. Detention ADP by Facility	2
III. Commitment Services	
A. State and Contract ADP by Facility	3
B. Community/Other Residential ADP by Facility	4
IV. Commitment ADP and New Commitments by Region	5
V. Parole Services	6



January 2017 DYC Population Report

I. Summary Population Data

DETAINED YOUTH

	January 2017		YTD	
	ADP	% change	ADP	LOS
State-Operated	265.5	5.1%	249.8	15.1 days
Contracted Staff Secure	3.5	-34.6%	5.8	16.3 days
Total Detained	269.0	4.3%	255.6	15.1 days

COMMITTED YOUTH

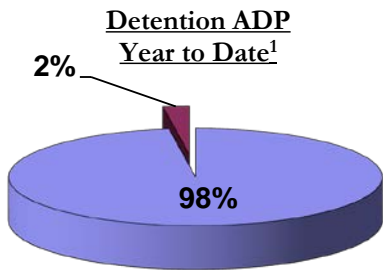
	January 2017		YTD	
	ADP	% change	ADP	LOS
Secure	370.7	1.5%	375.1	10.4 months
Staff Supervised	196.5	-0.8%	198.0	10.3 months
Community Residential	56.7	-14.0%	65.2	5.6 months
Other Residential	7.6	61.3%	7.3	3.2 months
Total Committed Residential	631.6	-0.4%	645.7	20.3 months
<i>Committed Residential w/o Boulder</i>	<i>631.6</i>	<i>-0.3%</i>	<i>644.3</i>	<i>-</i>

PAROLE YOUTH

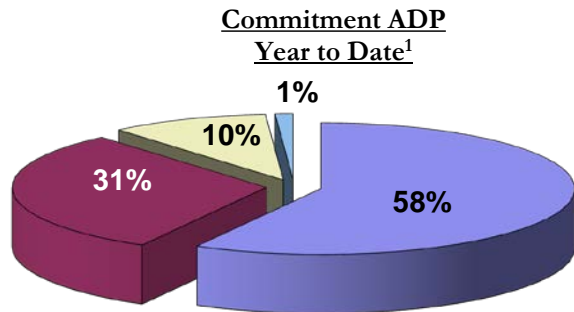
	January 2017		YTD	
	ADP	% change	ADP	LOS
Parole	220.2	-2.1%	235.6	7.3 months

TOTAL STATEWIDE ADP

	January 2017		YTD	
	ADP	% change	ADP	LOS
DETENTION	269.0	4.3%	255.6	15.1 days
COMMITMENT	631.6	-0.4%	645.7	20.3 months
PAROLE	220.2	-2.1%	235.6	7.3 months
STATE TOTAL	1,120.8	0.4%	1,136.9	N/A



■ State-Operated ■ Contracted Staff Secure



■ Secure ■ Staff Supervised ■ Community Residential ■ Other Residential

¹ Due to rounding, totals may not add to 100%.

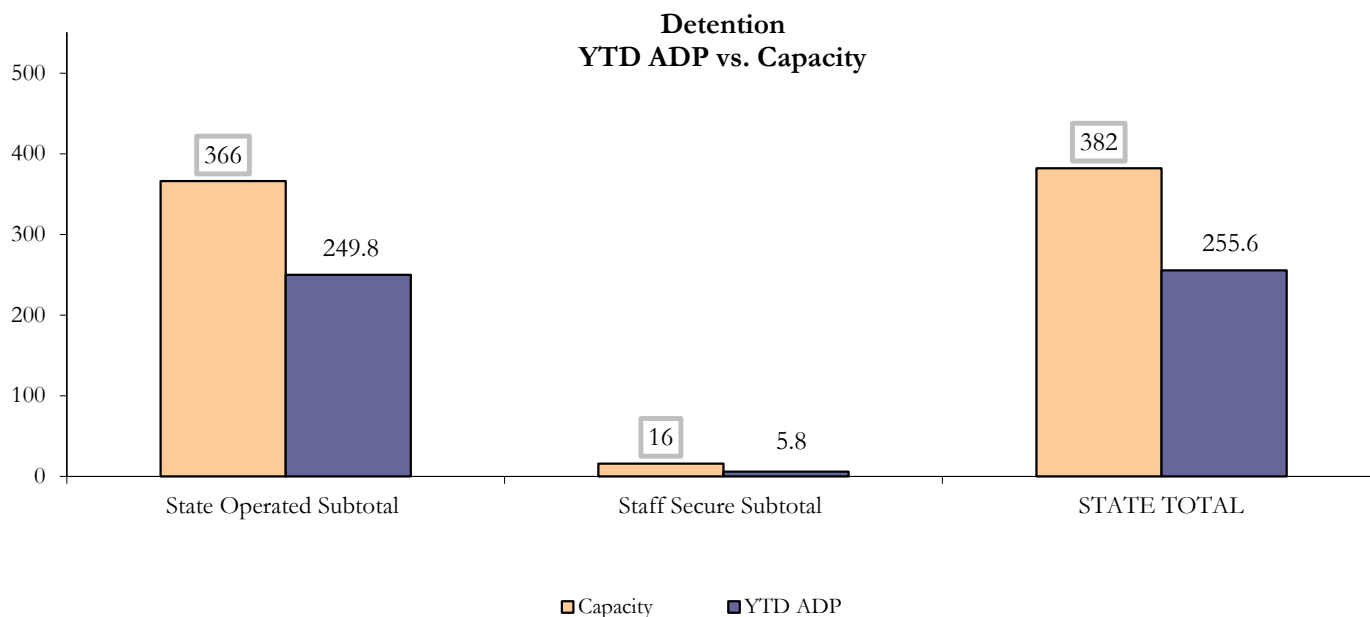
January 2017 DYC Population Report

II. Detention ADP by Facility

State Operated Detention							
Facility	Operating Capacity	Average Daily Population			New Admissions		LOS (days)
		Monthly	YTD	YTD % of Cap	Monthly	YTD	YTD
Adams	30	24.5	22.7	75.6%	42	307	14.4
Gilliam	64	39.7	44.2	69.1%	66	537	18.0
Grand Mesa	27	19.6	16.7	62.0%	36	208	16.2
Marvin Foote	61	51.1	38.0	62.3%	109	583	13.3
Mount View	41	27.4	23.3	56.7%	68	421	11.9
Platte Valley	64	36.0	40.7	63.6%	79	650	13.7
Pueblo	28	21.9	18.4	65.6%	47	277	14.1
Spring Creek	51	45.3	45.8	89.8%	76	511	18.5
State Subtotal	366	265.5	249.8	68.2%	523	3,494	15.1

Staff Secure Detention							
Facility	Operating Capacity	Average Daily Population			New Admissions		LOS (days)
		Monthly	YTD	YTD % of Cap	Monthly	YTD	YTD
Brown Center	3	0.3	0.4	13.2%	4	11	8.6
Robert DeNier	9	2.4	3.7	40.8%	0	43	17.4
Youthtrack San Luis Valley	4	0.8	1.8	44.4%	5	23	17.4
Staff Secure Subtotal	16	3.5	5.8	36.5%	9	77	16.3

STATEWIDE TOTAL							
	Operating Capacity	Average Daily Population			New Admissions		LOS (days)
		Monthly	YTD	YTD % of Cap	Monthly	YTD	YTD
Total Detention	382	269.0	255.6	66.9%	532	3,571	15.1



January 2017 DYC Population Report

III. Commitment Services

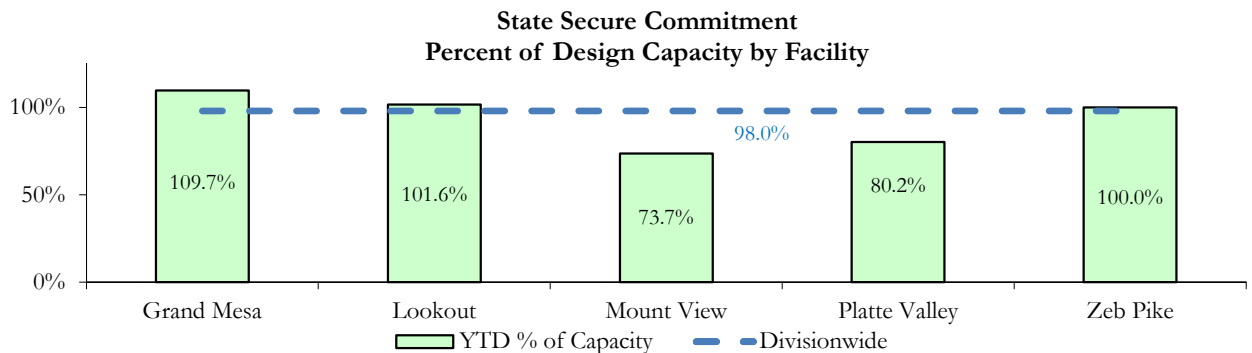
A. State and Contract ADP by Facility

STATE SECURE					
Facility		ADP		Capacity	
		State Secure		Design	
		Monthly	YTD	Capacity	% of YTD
	<i>Adams</i> ¹	0.2	0.6	-	-
	<i>Gilliam</i> ¹	2.2	1.3	-	-
	Grand Mesa	43.9	43.9	40	109.7%
	Lookout	145.8	142.3	140	101.6%
	<i>Marvin Foote</i> ¹	0.5	1.1	-	-
	Mount View	45.4	47.9	65	73.7%
	Platte Valley	52.2	44.1	55	80.2%
	<i>Pueblo</i> ¹	0.6	0.2	-	-
	<i>Spring Creek</i> ²	0.3	11.9	-	-
	Zeb Pike	38.0	38.0	38	100.0%
	Assessment Total	25.7	28.3	-	
	Secure Total	303.4	303.0	-	
	STATE SECURE TOTAL	329.1	331.4	338	98.0%

¹ Detention only facilities with commitment ADP due to committed youth being held in detention prior to transfer.

² Spring Creek was designated a detention only facility effective November 1, 2016 and no longer has commitment capacity allocation.

CONTRACT: PRIVATE SECURE + STAFF SUPERVISED		
Facility/Program ²	ADP	
	Monthly	YTD
(Private Secure) Betty K. Marler Center	35.7	36.4
(Private Secure) Robert DeNier	6.0	7.3
Alternative Homes For Youth - Greeley	16.2	13.5
Devereux Cleo Wallace	0.0	0.6
Gateway Residential Program - Delta	1.0	0.7
Hilltop (Residential Youth Services)	6.4	5.9
Jefferson Hills - Aurora	31.1	32.4
Ridge View	128.7	128.6
Robert Brown Center	0.0	1.1
Southern Peaks	6.3	4.4
Third Way Center - Lowry	6.8	11.0
<i>Private Secure & Staff Supervised Subtotal</i>	238.2	241.8



² Programs with both Secure and Community placements are aggregated into one category until further TRAILS builds can allow for programs to register as multiple types.

January 2017 DYC Population Report

III. Commitment Services Continued

B. Community/Other Residential ADP by Facility¹

COMMUNITY RESIDENTIAL		
	<i>Monthly</i>	<i>YTD</i>
Ariel Clinical Services	1.3	0.9
Dale House Project	8.0	8.9
Denver Area Youth Services (DAYS)	3.8	3.8
Griffith Centers for Children, Inc.	1.4	3.4
Job Corps	1.5	3.4
Kids Crossing	2.0	3.4
Mesa County Community Corrections	0.5	0.2
Mt Evans Qualifying House	7.1	6.5
Reflections for Youth, Inc.-Grismore	0.3	0.6
Savio House	0.0	0.7
Synergy Administration	5.9	4.7
Third Way Center, Bannock	0.0	1.8
Third Way Center, Pontiac	5.6	5.3
Third Way Center, York	5.6	5.4
Third Way Center, Lincoln	7.8	7.5
Turning Point Center, Prospect	0.8	1.3
Turning Point, Mathews St.	5.2	6.2
Whimspire Child Placement	0.0	0.2
Youthtrack, Work and Learn	0.0	0.9
<i>Community Subtotal</i>	<i>56.7</i>	<i>65.2</i>
<i>Private Secure + Staff Supervised + Community Subtotal</i>	<i>294.9</i>	<i>307.0</i>
OTHER RESIDENTIAL		
	<i>Monthly</i>	<i>YTD</i>
CMHI-Ft. Logan	0.0	0.1
CMHI-Pueblo	0.0	0.05
Hospital	1.0	0.14
Immigration Detention Facility	0.0	0.7
Job Corps Parole Program (Federally funded)	2.4	1.0
Other Mental Health Facility	0.0	0.01
Residential Drug/Alcohol Program	0.2	0.03
Residential Mental Health Program	1.8	2.2
Residential Work Program	0.0	0.5
Shelter Care (short term)	0.4	0.2
<i>Other Residential Subtotal²</i>	<i>7.6</i>	<i>7.3</i>
RESIDENTIAL TOTAL		
	631.6	645.7

¹ Programs with both Secure and Community placements are aggregated into one category until further TRAILS builds can allow for programs to register as multiple types.

² Due to relatively few youth referred to these types of placements, the Other Residential Subtotals may not be the sum of individual placements; this is typically the result of rounding errors and the method by which ADP is calculated.

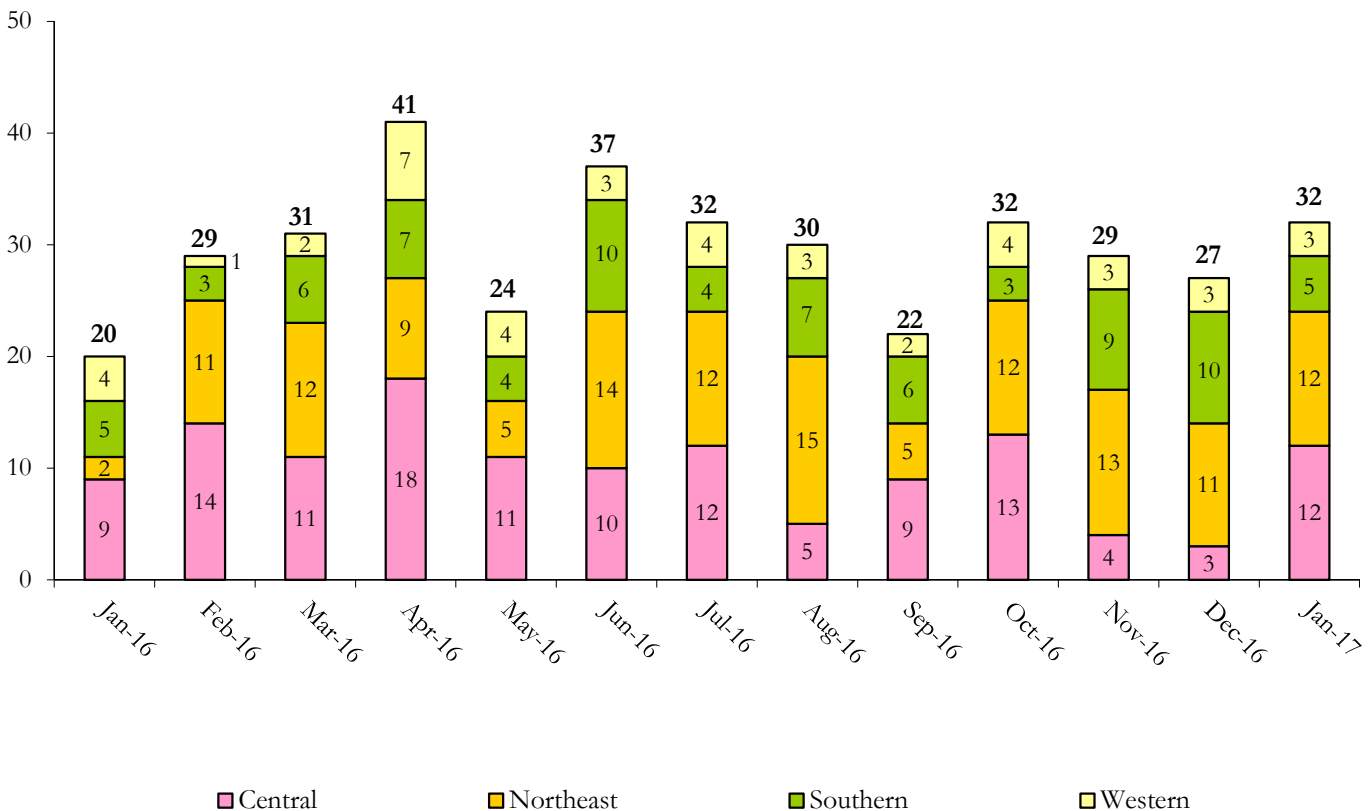
January 2017 DYC Population Report

IV. Commitment ADP and New Commitments by Region

COMMITMENT ADP				
Region	Monthly		YTD	
	January	% Change	January	% Change from Prior FY
Central Region	240.9	-3.2%	263.3	-12.6%
Northeast Region	196.5	2.2%	183.5	-4.5%
Southern Region	131.9	0.2%	136.8	-8.9%
Western Region	62.3	1.9%	62.1	-2.1%
Commitment ADP	631.6	-0.4%	645.7	-8.7%

NEW COMMITMENTS					
	FY 16-17		FY 15-16		% Change from last YTD
	January	YTD	January	YTD	
Central Region	12	61	9	79	-22.8%
Northeast Region	12	82	2	65	26.2%
Southern Region	5	45	5	42	7.1%
Western Region	3	25	4	23	8.7%
TOTAL	32	213	20	209	1.9%

Monthly New Commitments



January 2017 DYC Population Report

V. Parole Services

PAROLE ADP				
Region	Monthly	YTD		% Change from prev YTD
		FY 16-17	FY 15-16	
Central Region	83.0	94.5	101.5	-6.9%
Northeast Region	67.4	74.7	69.3	7.7%
Southern Region	49.2	46.5	47.6	-2.2%
Western Region	20.6	19.9	24.4	-18.3%
Total	220.2	235.6	242.8	-3.0%

Region	Parole Intakes		Parole Discharges		
	Monthly	YTD	Monthly	YTD	LOS
Central Region	9	87	16	109	7.6
Northeast Region	10	61	9	68	6.7
Southern Region	5	48	5	43	7.6
Western Region	2	21	3	26	7.0
Total	26	217	33	246	7.3

