

December 2016 FY 2016-2017 MONTHLY POPULATION REPORT

Prepared by the Division of Youth Corrections (DYC)
Research and Evaluation Unit
January 27th, 2017



COLORADO

**Office of Children,
Youth & Families**

Division of Youth Corrections

December 2016 DYC Population Report

I. Summary Population Data	1
II. Detention ADP by Facility	2
III. Commitment Services	
A. State and Contract ADP by Facility	3
B. Community/Other Residential ADP by Facility	4
IV. Commitment ADP and New Commitments by Region	5
V. Parole Services	6



December 2016 DYC Population Report

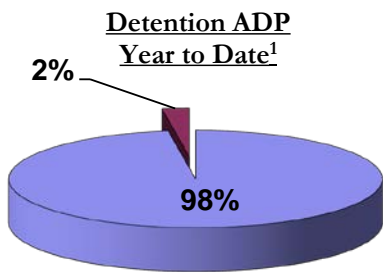
I. Summary Population Data

DETAINED YOUTH				
	December 2016		YTD	
	ADP	% change	ADP	LOS
State-Operated	252.5	-2.5%	248.9	14.8 days
Contracted Staff Secure	5.4	-24.0%	6.0	14.7 days
Total Detained	257.9	-3.1%	254.8	14.8 days

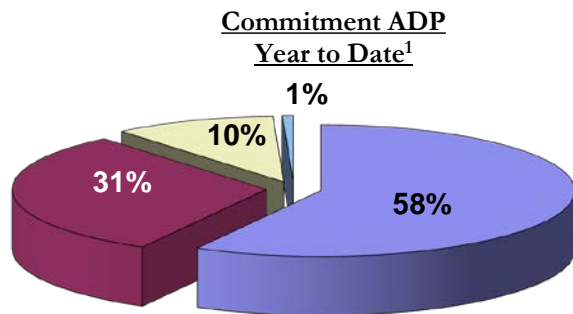
COMMITTED YOUTH				
	December 2016		YTD	
	ADP	% change	ADP	LOS
Secure	365.3	-0.9%	374.9	10.7 months
Staff Supervised	198.0	0.5%	199.4	10.0 months
Community Residential	66.0	-0.9%	66.7	5.3 months
Other Residential	4.7	-17.0%	4.5	2.7 months
Total Committed Residential	634.0	-0.6%	645.4	20.4 months
<i>Committed Residential w/o Boulder</i>	<i>633.5</i>	<i>-0.5%</i>	<i>643.8</i>	<i>-</i>

PAROLE YOUTH				
	December 2016		YTD	
	ADP	% change	ADP	LOS
Parole	224.9	-2.4%	238.3	7.2 months

TOTAL STATEWIDE ADP				
	December 2016		YTD	
	ADP	% change	ADP	LOS
DETENTION	257.9	-3.1%	254.8	14.8 days
COMMITMENT	634.0	-0.6%	645.4	20.4 months
PAROLE	224.9	-2.4%	238.3	7.2 months
STATE TOTAL	1,116.8	-1.5%	1,138.6	N/A



■ State-Operated ■ Contracted Staff Secure



■ Secure ■ Staff Supervised ■ Community Residential ■ Other Residential

¹ Due to rounding, totals may not add to 100%.

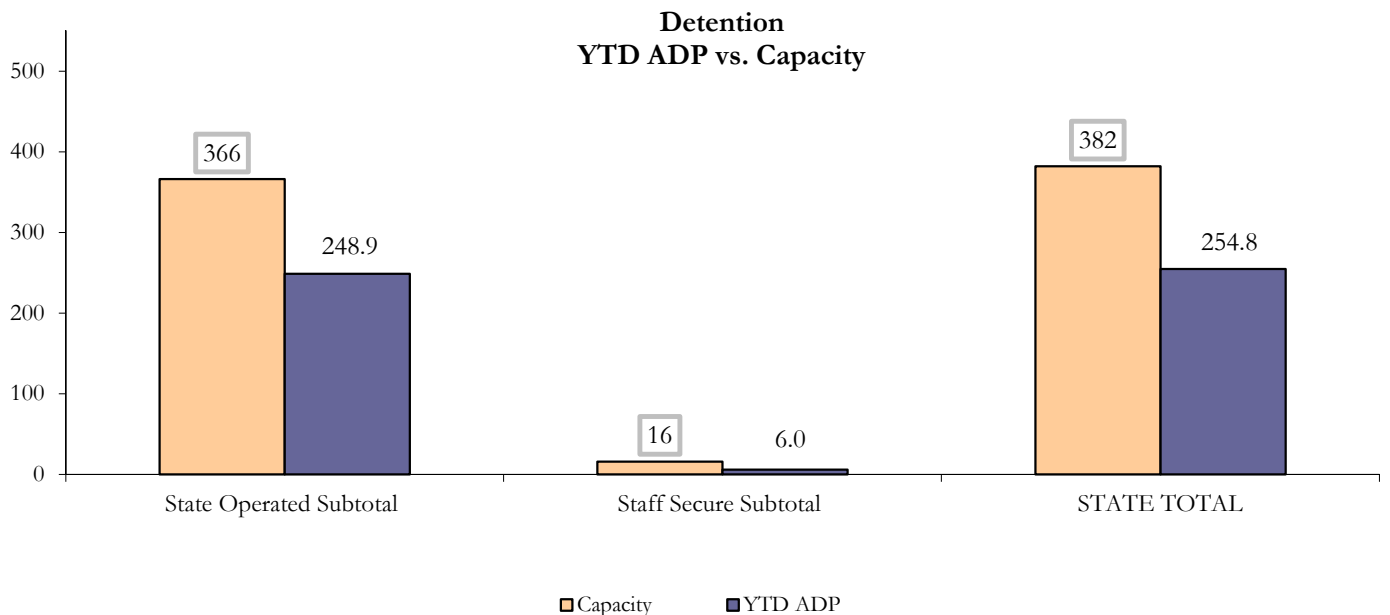
December 2016 DYC Population Report

II. Detention ADP by Facility

State Operated Detention							
Facility	Operating Capacity	Average Daily Population			New Admissions		LOS (days)
		Monthly	YTD	YTD % of Cap	Monthly	YTD	YTD
Adams	30	24.7	22.4	74.6%	41	264	13.4
Gilliam	64	42.5	46.0	71.9%	74	471	17.7
Grand Mesa	27	17.6	16.3	60.2%	27	172	15.5
Marvin Foote	61	44.4	36.1	59.1%	72	475	11.9
Mount View	41	19.5	22.6	55.0%	58	353	11.8
Platte Valley	64	38.8	42.0	65.6%	76	571	13.5
Pueblo	28	20.4	17.8	63.5%	45	229	14.2
Spring Creek	51	44.6	45.9	89.9%	72	435	19.3
State Subtotal	366	252.5	248.9	68.0%	465	2,970	14.8

Staff Secure Detention							
Facility	Operating Capacity	Average Daily Population			New Admissions		LOS (days)
		Monthly	YTD	YTD % of Cap	Monthly	YTD	YTD
Brown Center	3	0.0	0.4	13.6%	0	7	10.7
Robert DeNier	9	4.0	3.6	40.1%	7	42	13.0
Youthtrack San Luis Valley	4	1.4	1.9	48.6%	3	18	19.7
Staff Secure Subtotal	16	5.4	6.0	37.3%	10	67	14.7

STATEWIDE TOTAL							
	Operating Capacity	Average Daily Population			New Admissions		LOS (days)
		Monthly	YTD	YTD % of Cap	Monthly	YTD	YTD
Total Detention	382	257.9	254.8	66.7%	475	3,037	14.8



December 2016 DYC Population Report

III. Commitment Services

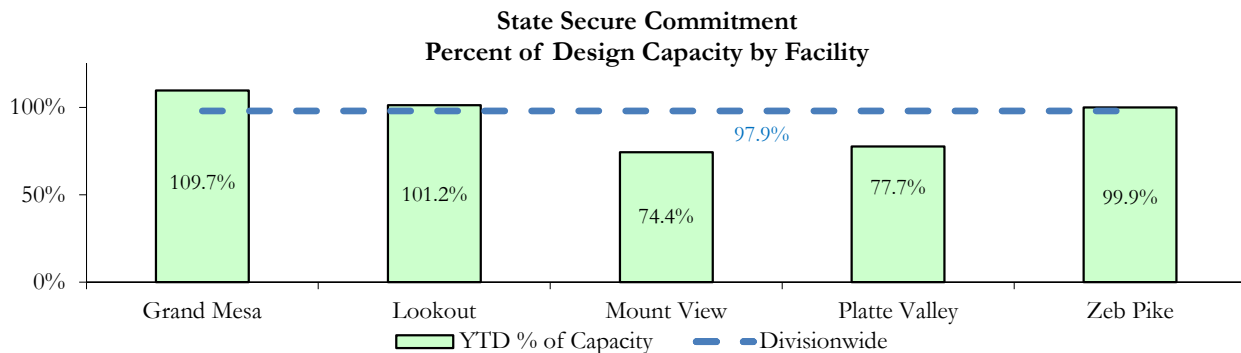
A. State and Contract ADP by Facility

STATE SECURE				
Facility	ADP		Capacity	
	State Secure		Design	
	Monthly	YTD	Capacity	% of YTD
Adams ¹	0.3	0.6	-	-
Gilliam ¹	0.0	0.2	-	-
Grand Mesa	44.1	43.9	40	109.7%
Lookout	146.2	141.7	140	101.2%
Marvin Foote ¹	0.3	1.2	-	-
Mount View	44.8	48.3	65	74.4%
Platte Valley	51.2	42.8	55	77.7%
Pueblo ¹	0.0	0.2	-	-
Spring Creek ²	0.4	13.9	-	-
Zeb Pike	38.1	38.0	38	99.9%
Assessment Total	26.1	28.8	-	
Secure Total	299.4	302.0	-	
STATE SECURE TOTAL	325.5	330.8	338	97.9%

¹ Detention only facilities with commitment ADP due to committed youth being held in detention prior to transfer.

² Spring Creek was designated a detention only facility effective November 1, 2016 and no longer has commitment capacity allocation.

CONTRACT: PRIVATE SECURE + STAFF SUPERVISED		
Facility/Program ²	ADP	
	Monthly	YTD
(Private Secure) Betty K. Marler Center	32.7	36.6
(Private Secure) Robert DeNier	7.1	7.5
Alternative Homes For Youth - Greeley	12.9	13.1
Devereux Cleo Wallace	0.0	0.7
Gateway Residential Program - Delta	1.0	0.7
Hilltop (Residential Youth Services)	6.9	5.8
Jefferson Hills - Aurora	32.8	32.6
Ridge View	130.1	129.6
Robert Brown Center	0.3	1.3
Southern Peaks	6.8	4.0
Third Way Center - Lowry	7.3	11.7
<i>Private Secure & Staff Supervised Subtotal</i>	237.9	243.5



² Programs with both Secure and Community placements are aggregated into one category until further TRAILS builds can allow for programs to register as multiple types.

December 2016 DYC Population Report

III. Commitment Services Continued

B. Community/Other Residential ADP by Facility¹

COMMUNITY RESIDENTIAL		
	<i>Monthly</i>	<i>YTD</i>
Ariel Clinical Services	0.9	0.9
Dale House Project	10.5	9.1
Denver Area Youth Services (DAYS)	3.9	3.8
Griffith Centers for Children, Inc.	2.3	3.7
Job Corps	2.0	3.7
Kids Crossing	2.0	3.7
Mesa County Community Corrections	0.0	0.2
Mt Evans Qualifying House	8.0	6.4
Reflections for Youth, Inc.-Grismore	1.0	0.6
Savio House	0.0	0.8
Synergy Administration	6.3	4.5
Third Way Center, Bannock	0.6	2.1
Third Way Center, Pontiac	6.4	5.2
Third Way Center, York	6.7	5.3
Third Way Center, Lincoln	7.6	7.4
Turning Point Center, Prospect	1.4	1.4
Turning Point, Mathews St.	6.3	6.4
Whimspire Child Placement	0.0	0.2
Youthtrack, Work and Learn	0.0	1.1
<i>Community Subtotal</i>	<i>66.0</i>	<i>66.7</i>
<i>Private Secure + Staff Supervised + Community Subtotal</i>	<i>303.8</i>	<i>310.1</i>
OTHER RESIDENTIAL		
	<i>Monthly</i>	<i>YTD</i>
CMHI-Ft. Logan	0.0	0.1
CMHI-Pueblo	0.0	0.05
Immigration Detention Facility	0.2	0.9
Job Corps Parole Program (Federally funded)	2.0	0.8
Other Mental Health Facility	0.0	0.01
Residential Mental Health Program	2.2	2.3
Residential Work Program	0.0	0.5
Shelter Care (short term)	0.5	0.2
<i>Other Residential Subtotal</i> ²	<i>4.7</i>	<i>4.5</i>
RESIDENTIAL TOTAL		
	634.0	645.4

¹ Programs with both Secure and Community placements are aggregated into one category until further TRAILS builds can allow for programs to register as multiple types.

² Due to relatively few youth referred to these types of placements, the Other Residential Subtotals may not be the sum of individual placements; this is typically the result of rounding errors and the method by which ADP is calculated.

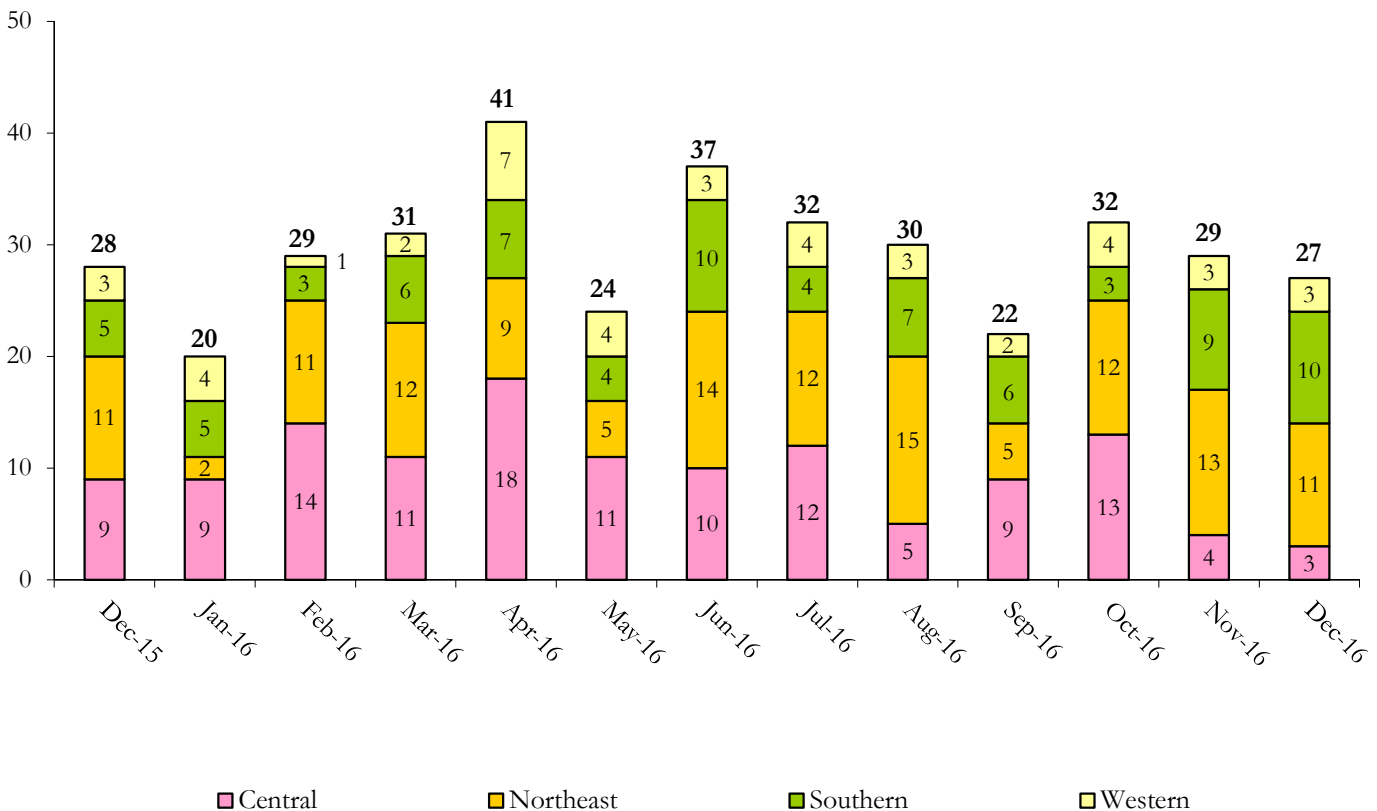
December 2016 DYC Population Report

IV. Commitment ADP and New Commitments by Region

COMMITMENT ADP				
Region	Monthly		YTD	
	December	% Change	December	% Change from Prior FY
Central Region	248.9	-4.1%	265.8	-12.3%
Northeast Region	192.3	2.8%	180.8	-6.6%
Southern Region	131.7	1.3%	137.6	-9.4%
Western Region	61.2	-0.5%	61.3	-3.2%
Commitment ADP	634.0	-0.6%	645.4	-9.3%

NEW COMMITMENTS					
	FY 16-17		FY 15-16		% Change from last YTD
	December	YTD	December	YTD	
Central Region	3	48	9	70	-31.4%
Northeast Region	11	70	11	63	11.1%
Southern Region	10	40	5	37	8.1%
Western Region	3	22	3	19	15.8%
TOTAL	27	180	28	189	-4.8%

Monthly New Commitments



December 2016 DYC Population Report

V. Parole Services

PAROLE ADP				
Region	Monthly	YTD		% Change from prev YTD
		FY 16-17	FY 15-16	
Central Region	88.5	95.7	100.9	-5.1%
Northeast Region	68.2	76.1	67.3	13.0%
Southern Region	48.9	46.2	48.2	-4.1%
Western Region	19.3	20.3	25.2	-19.5%
Total	224.9	238.3	241.6	-1.4%

Region	Parole Intakes		Parole Discharges		
	Monthly	YTD	Monthly	YTD	LOS
Central Region	15	78	11	92	7.6
Northeast Region	10	49	14	56	6.5
Southern Region	5	43	3	38	7.5
Western Region	4	19	7	23	6.5
Total	34	189	35	209	7.2

