

# November 2016 FY 2016-2017 MONTHLY POPULATION REPORT

Prepared by the Division of Youth Corrections (DYC)  
Research and Evaluation Unit  
December 21st, 2016



**COLORADO**

**Office of Children,  
Youth & Families**

Division of Youth Corrections

# November 2016 DYC Population Report

<b>I. Summary Population Data</b>	<b>1</b>
<b>II. Detention ADP by Facility</b>	<b>2</b>
<b>III. Commitment Services</b>	
A. State and Contract ADP by Facility	3
B. Community/Other Residential ADP by Facility	4
<b>IV. Commitment ADP and New Commitments by Region</b>	<b>5</b>
<b>V. Parole Services</b>	<b>6</b>



# November 2016 DYC Population Report

## I. Summary Population Data

### DETAINED YOUTH

	November 2016		YTD	
	ADP	% change	ADP	LOS
State-Operated	259.0	0.2%	249.1	14.3 days
Contracted Staff Secure	7.1	13.0%	5.9	14.1 days
<b>Total Detained</b>	<b>266.0</b>	<b>0.5%</b>	<b>255.0</b>	<b>14.3 days</b>

### COMMITTED YOUTH

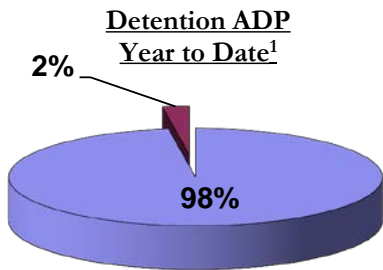
	November 2016		YTD	
	ADP	% change	ADP	LOS
Secure	368.7	1.9%	377.3	10.9 months
Staff Supervised	197.0	-2.2%	198.6	10.2 months
Community Residential	66.5	6.1%	65.9	5.6 months
Other Residential	5.7	39.5%	5.1	2.7 months
<b>Total Committed Residential</b>	<b>637.9</b>	<b>1.3%</b>	<b>647.0</b>	<b>20.9 months</b>
<i>Committed Residential w/o Boulder</i>	<i>636.9</i>	<i>1.3%</i>	<i>645.1</i>	<i>-</i>

### PAROLE YOUTH

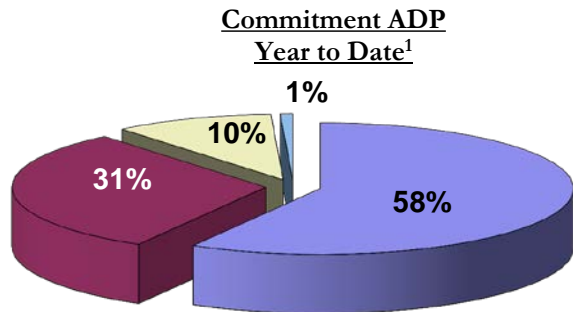
	November 2016		YTD	
	ADP	% change	ADP	LOS
Parole	230.4	-3.0%	242.2	7.2 months

### TOTAL STATEWIDE ADP

	November 2016		YTD	
	ADP	% change	ADP	LOS
<b>DETENTION</b>	<b>266.0</b>	<b>0.5%</b>	<b>255.0</b>	<b>14.3 days</b>
<b>COMMITMENT</b>	<b>637.9</b>	<b>1.3%</b>	<b>647.0</b>	<b>20.9 months</b>
<b>PAROLE</b>	<b>230.4</b>	<b>-3.0%</b>	<b>242.2</b>	<b>7.2 months</b>
<b>STATE TOTAL</b>	<b>1,134.3</b>	<b>0.2%</b>	<b>1,144.2</b>	<b>N/A</b>



■ State-Operated ■ Contracted Staff Secure



■ Secure ■ Staff Supervised ■ Community Residential ■ Other Residential

<sup>1</sup> Due to rounding, totals may not add to 100%.

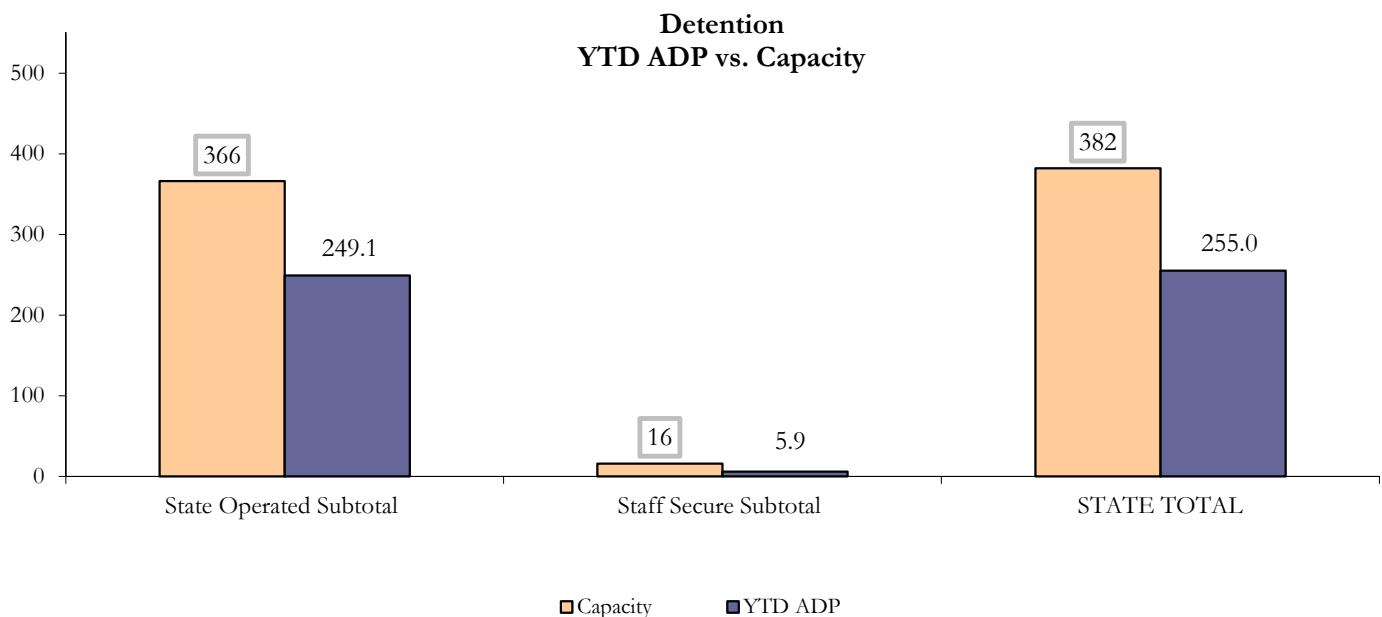
# November 2016 DYC Population Report

## II. Detention ADP by Facility

State Operated Detention							
Facility	Operating Capacity	Average Daily Population			New Admissions		LOS (days)
		Monthly	YTD	YTD % of Cap	Monthly	YTD	YTD
Adams	30	22.1	21.9	73.0%	50	223	12.5
Gilliam	64	42.5	46.7	73.0%	71	397	17.4
Grand Mesa	27	15.3	16.0	59.2%	26	145	15.2
Marvin Foote	61	42.8	34.4	56.4%	78	403	11.3
Mount View	41	25.8	23.5	57.2%	61	297	12.0
Platte Valley	64	47.6	43.3	67.6%	103	498	13.2
Pueblo	28	16.4	17.3	61.7%	36	184	14.2
Spring Creek	51	46.4	46.1	90.4%	82	363	18.2
<b>State Subtotal</b>	<b>366</b>	<b>259.0</b>	<b>249.1</b>	<b>68.1%</b>	<b>507</b>	<b>2,510</b>	<b>14.3</b>

Staff Secure Detention							
Facility	Operating Capacity	Average Daily Population			New Admissions		LOS (days)
		Monthly	YTD	YTD % of Cap	Monthly	YTD	YTD
Brown Center	3	0.0	0.5	16.4%	0	7	10.7
Robert DeNier	9	5.5	3.4	37.8%	7	34	11.0
Youthtrack San Luis Valley	4	1.6	2.0	51.2%	5	15	23.1
<b>Staff Secure Subtotal</b>	<b>16</b>	<b>7.1</b>	<b>5.9</b>	<b>37.1%</b>	<b>12</b>	<b>56</b>	<b>14.1</b>

STATEWIDE TOTAL							
	Operating Capacity	Average Daily Population			New Admissions		LOS (days)
		Monthly	YTD	YTD % of Cap	Monthly	YTD	YTD
<b>Total Detention</b>	<b>382</b>	<b>266.0</b>	<b>255.0</b>	<b>66.8%</b>	<b>519</b>	<b>2,566</b>	<b>14.3</b>



# November 2016 DYC Population Report

## III. Commitment Services

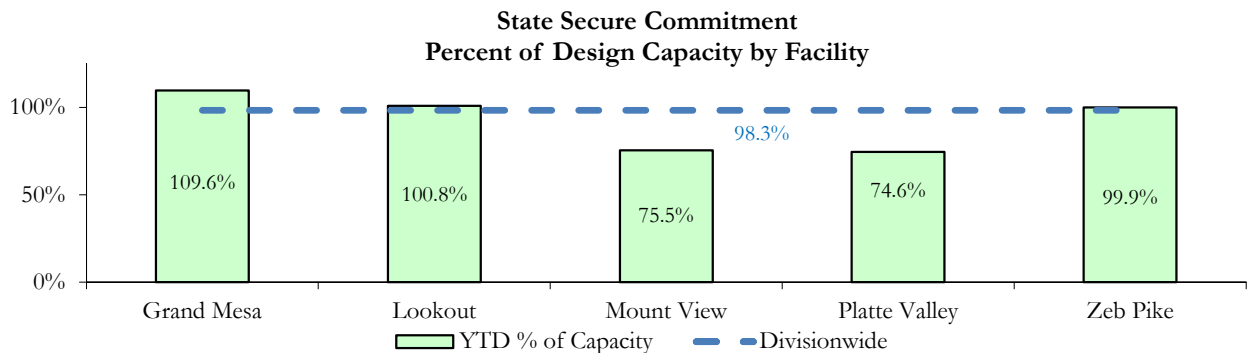
### A. State and Contract ADP by Facility

STATE SECURE					
Facility		ADP		Capacity	
		State Secure		Design	
		Monthly	YTD	Capacity	% of YTD
	<i>Adams</i> <sup>1</sup>	0.0	0.7	-	-
	<i>Gilliam</i> <sup>1</sup>	0.2	0.2	-	-
	Grand Mesa	41.5	43.8	40	109.6%
	Lookout	148.1	141.2	140	100.8%
	<i>Marvin Foote</i> <sup>1</sup>	0.7	1.4	-	-
	Mount View	49.5	49.1	65	75.5%
	Platte Valley	46.4	41.0	55	74.6%
	<i>Pueblo</i> <sup>1</sup>	0.1	0.2	-	-
	<i>Spring Creek</i> <sup>2</sup>	0.8	16.6	-	-
	Zeb Pike	38.3	37.9	38	99.9%
	<b>Assessment Total</b>	<b>30.4</b>	<b>29.3</b>	-	
	<b>Secure Total</b>	<b>295.3</b>	<b>302.9</b>	-	
	<b>STATE SECURE TOTAL</b>	<b>325.7</b>	<b>332.2</b>	<b>338</b>	<b>98.3%</b>

<sup>1</sup> Detention only facilities with commitment ADP due to committed youth being held in detention prior to transfer.

<sup>2</sup> Spring Creek was designated a detention only facility effective November 1, 2016 and no longer has commitment capacity allocation.

CONTRACT: PRIVATE SECURE + STAFF SUPERVISED		
Facility/Program <sup>2</sup>	ADP	
	Monthly	YTD
(Private Secure) Betty K. Marler Center	33.0	37.3
(Private Secure) Robert DeNier	10.1	7.8
Alternative Homes For Youth - Greeley	11.9	13.1
Devereux Cleo Wallace	0.9	0.8
Gateway Residential Program - Delta	0.3	0.6
Hilltop (Residential Youth Services)	6.3	5.6
Jefferson Hills - Aurora	32.9	32.5
Ridge View	126.2	128.5
Robert Brown Center	2.0	1.5
Southern Peaks	5.4	3.5
Third Way Center - Lowry	11.0	12.5
<i>Private Secure &amp; Staff Supervised Subtotal</i>	<b>240.0</b>	<b>243.7</b>



<sup>2</sup> Programs with both Secure and Community placements are aggregated into one category until further TRAILS builds can allow for programs to register as multiple types.

# November 2016 DYC Population Report

## III. Commitment Services Continued

### B. Community/Other Residential ADP by Facility<sup>1</sup>

<b>COMMUNITY RESIDENTIAL</b>		
	<i>Monthly</i>	<i>YTD</i>
Dale House Project	11.1	8.8
Denver Area Youth Services (DAYS)	4.6	3.8
Griffith Centers for Children, Inc.	2.3	4.0
Job Corps	3.7	4.1
Kids Crossing	2.5	4.0
Mesa County Community Corrections	0.0	0.2
Mt Evans Qualifying House	5.7	6.1
Reflections for Youth, Inc.-Grismore	1.0	0.5
Savio House	0.0	1.0
Synergy Administration	6.0	4.2
Third Way Center, Bannock	1.0	2.4
Third Way Center, Pontiac	6.8	5.0
Third Way Center, York	6.7	5.1
Third Way Center, Lincoln	6.4	7.4
Turning Point Center, Prospect	1.0	1.4
Turning Point, Mathews St.	7.1	6.4
Whimspire Child Placement	0.0	0.2
Youthtrack, Work and Learn	0.7	1.3
<i>Community Subtotal</i>	<i>66.5</i>	<i>65.9</i>
<i>Private Secure + Staff Supervised + Community Subtotal</i>	<i>306.6</i>	<i>309.7</i>
<b>OTHER RESIDENTIAL</b>		
	<i>Monthly</i>	<i>YTD</i>
CMHI-Ft. Logan	0.0	0.1
CMHI-Pueblo	0.3	0.06
Immigration Detention Facility	1.0	1.0
Job Corps Parole Program (Federally funded)	2.0	0.5
Other Mental Health Facility	0.0	0.02
Residential Mental Health Program	2.0	2.3
Residential Work Program	0.0	0.6
Shelter Care (short term)	0.5	0.1
<i>Other Residential Subtotal<sup>2</sup></i>	<i>5.7</i>	<i>5.1</i>
<b>RESIDENTIAL TOTAL</b>	<b>637.9</b>	<b>647.0</b>

<sup>1</sup> Programs with both Secure and Community placements are aggregated into one category until further TRAILS builds can allow for programs to register as multiple types.

<sup>2</sup> Due to relatively few youth referred to these types of placements, the Other Residential Subtotals may not be the sum of individual placements; this is typically the result of rounding errors and the method by which ADP is calculated.

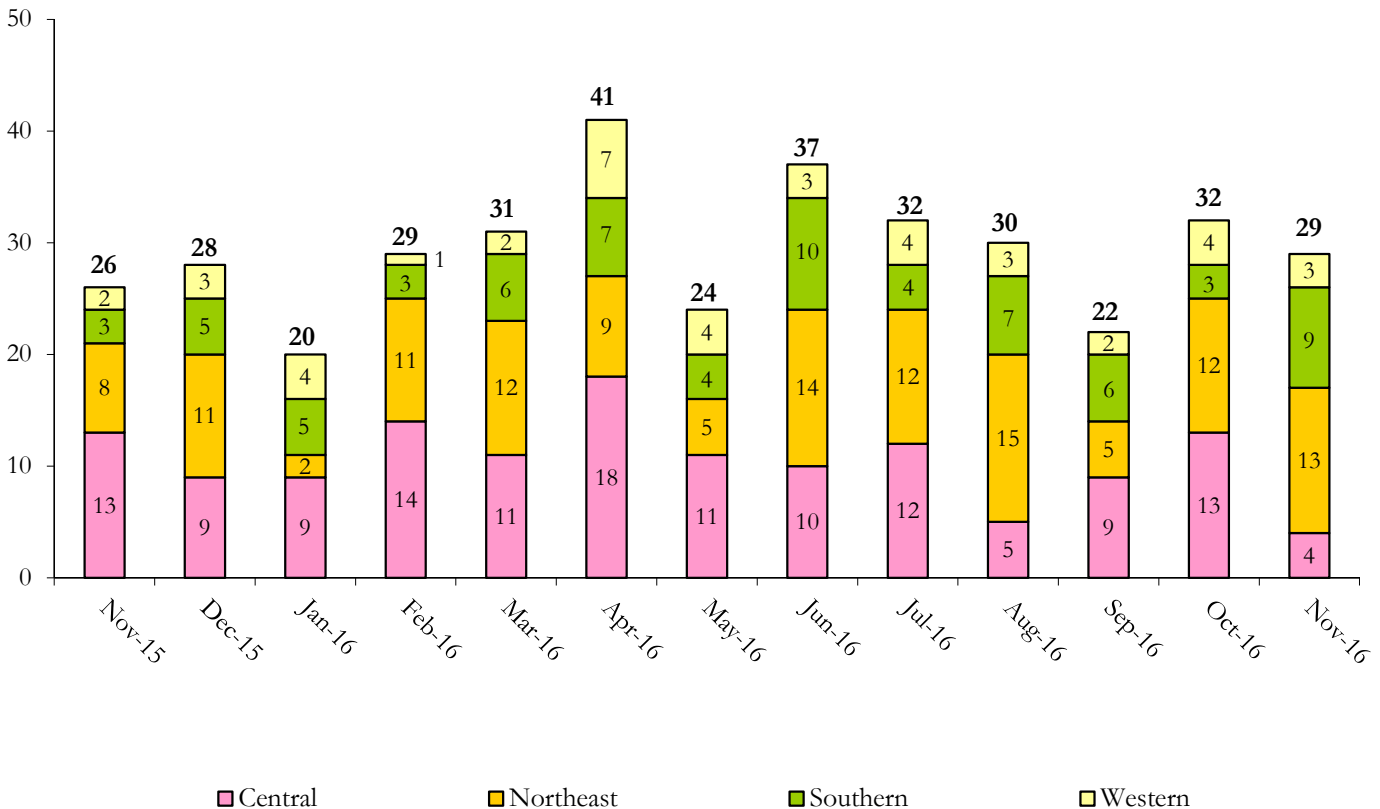
# November 2016 DYC Population Report

## IV. Commitment ADP and New Commitments by Region

COMMITMENT ADP				
Region	Monthly		YTD	
	November	% Change	November	% Change from Prior FY
Central Region	259.4	-0.1%	268.6	-11.9%
Northeast Region	187.0	5.6%	179.8	-7.7%
Southern Region	130.0	-2.9%	137.2	-10.0%
Western Region	61.5	3.7%	61.4	-4.1%
<b>Commitment ADP</b>	<b>637.9</b>	<b>1.3%</b>	<b>647.0</b>	<b>-9.7%</b>

NEW COMMITMENTS					
	FY 16-17		FY 15-16		% Change from last YTD
	November	YTD	November	YTD	
Central Region	4	45	13	61	-26.2%
Northeast Region	13	59	8	52	13.5%
Southern Region	9	30	3	32	-6.3%
Western Region	3	18	2	16	12.5%
<b>TOTAL</b>	<b>29</b>	<b>152</b>	<b>26</b>	<b>161</b>	<b>-5.6%</b>

### Monthly New Commitments



# November 2016 DYC Population Report

## V. Parole Services

PAROLE ADP				
Region	Monthly	YTD		% Change from prev YTD
		FY 16-17	FY 15-16	
Central Region	89.4	97.6	100.7	-3.1%
Northeast Region	75.6	78.4	66.6	17.7%
Southern Region	44.9	45.7	49.3	-7.4%
Western Region	20.5	20.5	25.7	-20.4%
<b>Total</b>	<b>230.4</b>	<b>242.2</b>	<b>242.4</b>	<b>-0.1%</b>

Region	Parole Intakes		Parole Discharges		
	Monthly	YTD	Monthly	YTD	LOS
Central Region	7	60	15	80	7.3
Northeast Region	5	39	8	37	6.8
Southern Region	7	36	3	35	7.7
Western Region	2	15	2	16	6.8
<b>Total</b>	<b>21</b>	<b>150</b>	<b>28</b>	<b>168</b>	<b>7.2</b>

