

# October 2016 FY 2016-2017 MONTHLY POPULATION REPORT

Prepared by the Division of Youth Corrections (DYC)  
Research and Evaluation Unit  
November 23rd, 2016



**COLORADO**

**Office of Children,  
Youth & Families**

Division of Youth Corrections

# October 2016 DYC Population Report

<b>I. Summary Population Data</b>	<b>1</b>
<b>II. Detention ADP by Facility</b>	<b>2</b>
<b>III. Commitment Services</b>	
A. State and Contract ADP by Facility	3
B. Community/Other Residential ADP by Facility	4
<b>IV. Commitment ADP and New Commitments by Region</b>	<b>5</b>
<b>V. Parole Services</b>	<b>6</b>



# October 2016 DYC Population Report

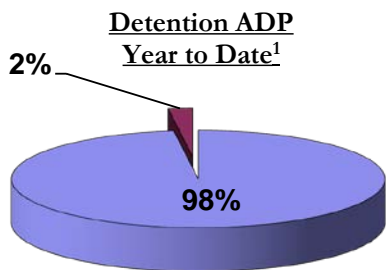
## I. Summary Population Data

DETAINED YOUTH				
	October 2016		YTD	
	ADP	% change	ADP	LOS
State-Operated	258.4	3.6%	247.2	14.6 days
Contracted Staff Secure	6.3	45.4%	5.3	13.3 days
<b>Total Detained</b>	<b>264.7</b>	<b>4.4%</b>	<b>252.4</b>	<b>14.6 days</b>

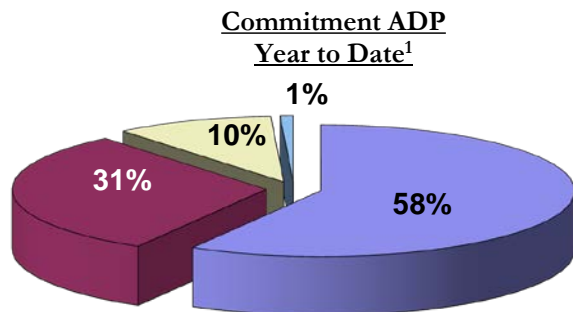
COMMITTED YOUTH				
	October 2016		YTD	
	ADP	% change	ADP	LOS
Secure	361.8	-4.6%	379.4	11.3 months
Staff Supervised	201.4	1.3%	199.4	10.4 months
Community Residential	62.7	-1.2%	65.6	5.4 months
Other Residential	4.1	38.8%	5.4	3.0 months
<b>Total Committed Residential</b>	<b>630.0</b>	<b>-2.3%</b>	<b>649.8</b>	<b>21.4 months</b>
<i>Committed Residential w/o Boulder</i>	<i>628.5</i>	<i>-2.2%</i>	<i>647.8</i>	<i>-</i>

PAROLE YOUTH				
	October 2016		YTD	
	ADP	% change	ADP	LOS
Parole	237.5	-1.5%	244.9	7.1 months

TOTAL STATEWIDE ADP				
	October 2016		YTD	
	ADP	% change	ADP	LOS
<b>DETENTION</b>	<b>264.7</b>	<b>4.4%</b>	<b>252.4</b>	<b>14.6 days</b>
<b>COMMITMENT</b>	<b>630.0</b>	<b>-2.3%</b>	<b>649.8</b>	<b>21.4 months</b>
<b>PAROLE</b>	<b>237.5</b>	<b>-1.5%</b>	<b>244.9</b>	<b>7.1 months</b>
<b>STATE TOTAL</b>	<b>1,132.2</b>	<b>-0.6%</b>	<b>1,147.1</b>	<b>N/A</b>



■ State-Operated   ■ Contracted Staff Secure



■ Secure   ■ Staff Supervised   ■ Community Residential   ■ Other Residential

<sup>1</sup> Due to rounding, totals may not add to 100%.

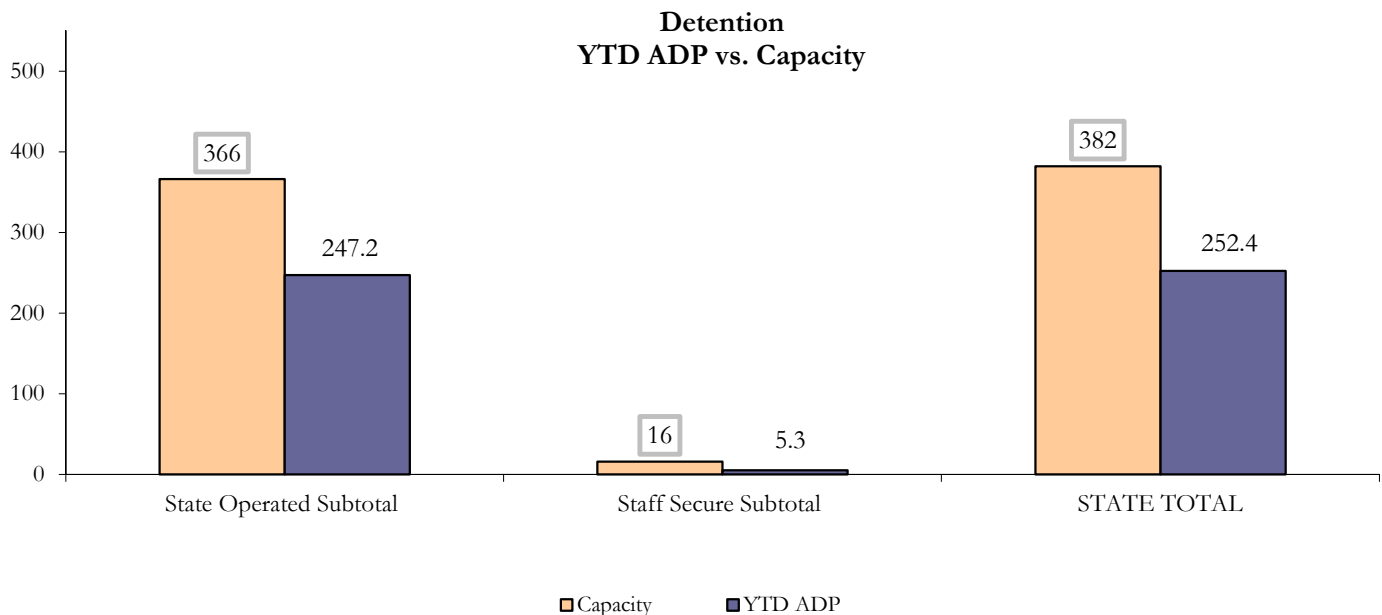
# October 2016 DYC Population Report

## II. Detention ADP by Facility

State Operated Detention							
Facility	Operating Capacity	Average Daily Population			New Admissions		LOS (days)
		Monthly	YTD	YTD % of Cap	Monthly	YTD	YTD
Adams	30	22.8	21.9	72.8%	43	173	13.2
Gilliam	64	48.9	47.7	74.6%	99	326	17.7
Grand Mesa	27	17.2	16.1	59.8%	25	119	16.0
Marvin Foote	61	31.6	32.4	53.1%	88	325	11.5
Mount View	41	25.7	22.9	55.8%	62	236	11.8
Platte Valley	64	48.5	42.2	66.0%	106	395	13.6
Pueblo	28	17.4	17.5	62.4%	35	148	14.2
Spring Creek	51	46.3	46.5	91.2%	77	281	18.9
<b>State Subtotal</b>	<b>366</b>	<b>258.4</b>	<b>247.2</b>	<b>67.5%</b>	<b>535</b>	<b>2,003</b>	<b>14.6</b>

Staff Secure Detention							
Facility	Operating Capacity	Average Daily Population			New Admissions		LOS (days)
		Monthly	YTD	YTD % of Cap	Monthly	YTD	YTD
Brown Center	3	0.5	0.6	20.4%	0	7	10.7
Robert DeNier	9	4.2	2.5	27.6%	7	25	8.5
Youthtrack San Luis Valley	4	1.5	2.2	54.2%	4	10	27.3
<b>Staff Secure Subtotal</b>	<b>16</b>	<b>6.3</b>	<b>5.3</b>	<b>32.9%</b>	<b>11</b>	<b>42</b>	<b>13.3</b>

STATEWIDE TOTAL							
	Operating Capacity	Average Daily Population			New Admissions		LOS (days)
		Monthly	YTD	YTD % of Cap	Monthly	YTD	YTD
<b>Total Detention</b>	<b>382</b>	<b>264.7</b>	<b>252.4</b>	<b>66.1%</b>	<b>546</b>	<b>2,045</b>	<b>14.6</b>



# October 2016 DYC Population Report

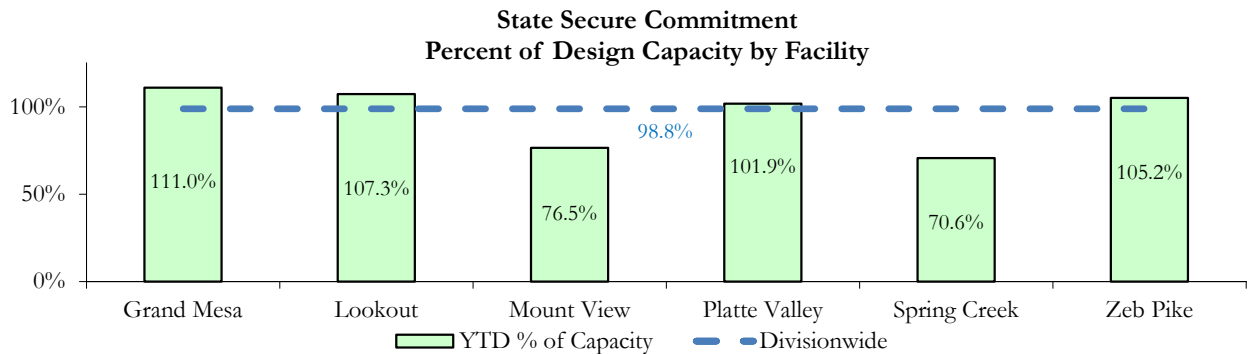
## III. Commitment Services

### A. State and Contract ADP by Facility

STATE SECURE				
Facility	ADP		Capacity	
	State Secure		Design	
	Monthly	YTD	Capacity	% of YTD
Adams <sup>1</sup>	0.4	0.8	-	-
Gilliam <sup>1</sup>	0.2	0.2	-	-
Grand Mesa	42.7	44.4	40	111.0%
Lookout	144.4	139.5	130	107.3%
Marvin Foote <sup>1</sup>	0.5	1.6	-	-
Mount View	46.5	48.9	64	76.5%
Platte Valley	39.8	39.7	39	101.9%
Pueblo <sup>1</sup>	0.0	0.2	-	-
Spring Creek	5.3	20.5	29	70.6%
Zeb Pike	38.3	37.9	36	105.2%
<b>Assessment Total</b>	<b>24.5</b>	<b>29.0</b>	-	
<b>Secure Total</b>	<b>293.5</b>	<b>304.8</b>	-	
<b>STATE SECURE TOTAL</b>	<b>318.0</b>	<b>333.8</b>	<b>338</b>	<b>98.8%</b>

<sup>1</sup> Detention only facilities with commitment ADP due to committed youth being held in detention prior to transfer.

CONTRACT: PRIVATE SECURE + STAFF SUPERVISED		
Facility/Program <sup>2</sup>	ADP	
	Monthly	YTD
(Private Secure) Betty K. Marler Center	36.1	38.4
(Private Secure) Robert DeNier	7.7	7.2
Alternative Homes For Youth - Greeley	12.8	13.4
Devereux Cleo Wallace	1.2	0.8
Gateway Residential Program - Delta	0.0	0.7
Hilltop (Residential Youth Services)	6.2	5.5
Jefferson Hills - Aurora	33.8	32.4
Ridge View	128.5	129.4
Robert Brown Center	2.1	1.3
Southern Peaks	3.7	3.0
Third Way Center - Lowry	13.1	12.9
<i>Private Secure &amp; Staff Supervised Subtotal</i>	<b>245.2</b>	<b>245.0</b>



<sup>2</sup> Programs with both Secure and Community placements are aggregated into one category until further TRAILS builds can allow for programs to register as multiple types.

# October 2016 DYC Population Report

## III. Commitment Services Continued

### B. Community/Other Residential ADP by Facility<sup>1</sup>

<b>COMMUNITY RESIDENTIAL</b>		
	<i>Monthly</i>	<i>YTD</i>
Dale House Project	7.6	8.2
Denver Area Youth Services (DAYS)	4.7	3.6
Griffith Centers for Children, Inc.	3.2	4.3
Job Corps	3.8	4.2
Kids Crossing	4.0	4.4
Mesa County Community Corrections	0.0	0.2
Mt Evans Qualifying House	5.6	6.2
Reflections for Youth, Inc.-Grismore	1.0	0.4
Savio House	0.5	1.3
Synergy Administration	4.1	3.8
Third Way Center, Bannock	1.9	2.8
Third Way Center, Pontiac	4.2	4.6
Third Way Center, York	5.8	4.7
Third Way Center, Lincoln	7.1	7.6
Turning Point Center, Prospect	1.4	1.5
Turning Point, Mathews St.	6.9	6.2
Whimspire Child Placement	0.0	0.3
Youthtrack, Work and Learn	1.0	1.5
<i>Community Subtotal</i>	<i>62.7</i>	<i>65.6</i>
<b><i>Private Secure + Staff Supervised + Community Subtotal</i></b>	<b><i>307.9</i></b>	<b><i>310.6</i></b>
<b>OTHER RESIDENTIAL</b>		
	<i>Monthly</i>	<i>YTD</i>
CMHI-Ft. Logan	0.3	0.1
Immigration Detention Facility	1.0	1.0
Job Corps Parole Program (Federally funded)	0.7	0.2
Other Mental Health Facility	0.0	0.02
Residential Mental Health Program	1.1	2.2
Residential Work Program	0.2	0.8
<i>Other Residential Subtotal<sup>2</sup></i>	<i>4.1</i>	<i>5.4</i>
<b>RESIDENTIAL TOTAL</b>	<b>630.0</b>	<b>649.8</b>

<sup>1</sup> Programs with both Secure and Community placements are aggregated into one category until further TRAILS builds can allow for programs to register as multiple types.

<sup>2</sup> Due to relatively few youth referred to these types of placements, the Other Residential Subtotals may not be the sum of individual placements; this is typically the result of rounding errors and the method by which ADP is calculated.

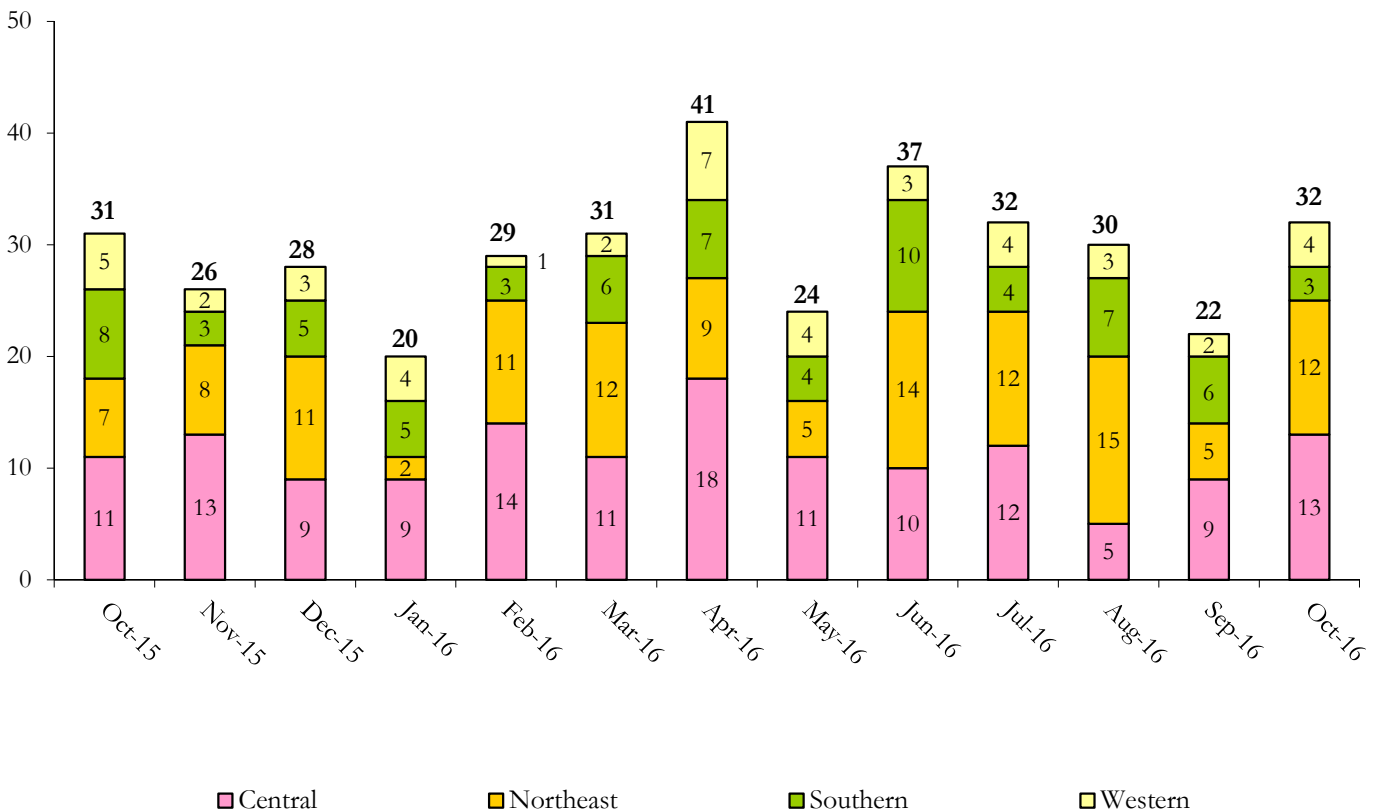
# October 2016 DYC Population Report

## IV. Commitment ADP and New Commitments by Region

COMMITMENT ADP				
Region	Monthly		YTD	
	October	% Change	October	% Change from Prior FY
Central Region	259.8	-2.2%	269.9	-12.4%
Northeast Region	177.1	-2.0%	179.5	-9.2%
Southern Region	133.8	-2.2%	139.3	-9.3%
Western Region	59.3	-3.7%	61.1	-4.9%
<b>Commitment ADP</b>	<b>630.0</b>	<b>-2.3%</b>	<b>649.8</b>	<b>-10.2%</b>

NEW COMMITMENTS					
	FY 16-17		FY 15-16		% Change from last YTD
	October	YTD	October	YTD	
Central Region	13	41	11	48	-14.6%
Northeast Region	12	45	7	43	4.7%
Southern Region	3	21	8	30	-30.0%
Western Region	4	15	5	14	7.1%
<b>TOTAL</b>	<b>32</b>	<b>122</b>	<b>31</b>	<b>135</b>	<b>-9.6%</b>

### Monthly New Commitments



# October 2016 DYC Population Report

## V. Parole Services

PAROLE ADP				
Region	Monthly	YTD		% Change from prev YTD
		FY 16-17	FY 15-16	
Central Region	93.4	99.6	96.9	2.8%
Northeast Region	79.0	78.7	65.9	19.4%
Southern Region	44.5	45.9	50.3	-8.8%
Western Region	20.7	20.7	26.3	-21.6%
<b>Total</b>	<b>237.5</b>	<b>244.9</b>	<b>239.5</b>	<b>2.2%</b>

Region	Parole Intakes		Parole Discharges		LOS
	Monthly	YTD	Monthly	YTD	
Central Region	15	52	16	65	6.9
Northeast Region	6	33	10	29	6.6
Southern Region	8	29	9	31	7.9
Western Region	7	13	3	13	7.0
<b>Total</b>	<b>36</b>	<b>127</b>	<b>38</b>	<b>138</b>	<b>7.1</b>

