

September 2016 FY 2016-2017 MONTHLY POPULATION REPORT

Prepared by the Division of Youth Corrections (DYC)
Research and Evaluation Unit
October 27th, 2016



COLORADO

**Office of Children,
Youth & Families**

Division of Youth Corrections

September 2016 DYC Population Report

I. Summary Population Data	1
II. Detention ADP by Facility	2
III. Commitment Services	
A. State and Contract ADP by Facility	3
B. Community/Other Residential ADP by Facility	4
IV. Commitment ADP and New Commitments by Region	5
V. Parole Services	6



September 2016 DYC Population Report

I. Summary Population Data

DETAINED YOUTH

	September 2016		YTD	
	ADP	% change	ADP	LOS
State-Operated	249.3	4.0%	244.8	15.0 days
Contracted Staff Secure	4.3	-10.7%	4.9	13.9 days
Total Detained	253.6	3.7%	249.7	15.0 days

COMMITTED YOUTH

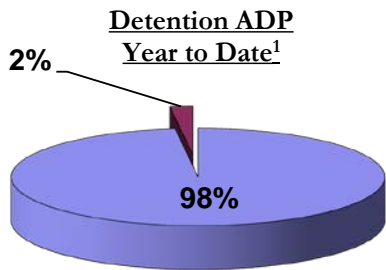
	September 2016		YTD	
	ADP	% change	ADP	LOS
Secure	379.4	-0.7%	386.1	10.7 months
Staff Supervised	198.8	0.2%	199.3	11.4 months
Community Residential	63.5	-4.2%	66.6	5.4 months
Other Residential	2.9	-55.8%	2.8	2.9 months
Total Committed Residential	644.6	-1.3%	654.7	21.4 months
<i>Committed Residential w/o Boulder</i>	<i>642.6</i>	<i>-1.3%</i>	<i>652.5</i>	<i>-</i>

PAROLE YOUTH

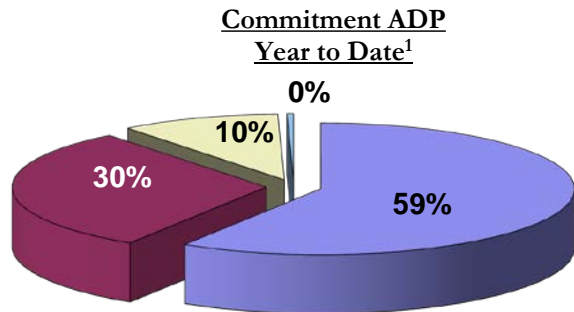
	September 2016		YTD	
	ADP	% change	ADP	LOS
Parole	241.1	-4.2%	246.2	6.9 months

TOTAL STATEWIDE ADP

	September 2016		YTD	
	ADP	% change	ADP	LOS
DETENTION	253.6	3.7%	249.7	15.0 days
COMMITMENT	644.6	-1.3%	654.7	21.4 months
PAROLE	241.1	-4.2%	246.2	6.9 months
STATE TOTAL	1,139.3	-0.9%	1,150.6	N/A



■ State-Operated ■ Contracted Staff Secure



■ Secure ■ Staff Supervised ■ Community Residential ■ Other Residential

¹ Due to rounding, totals may not add to 100%.

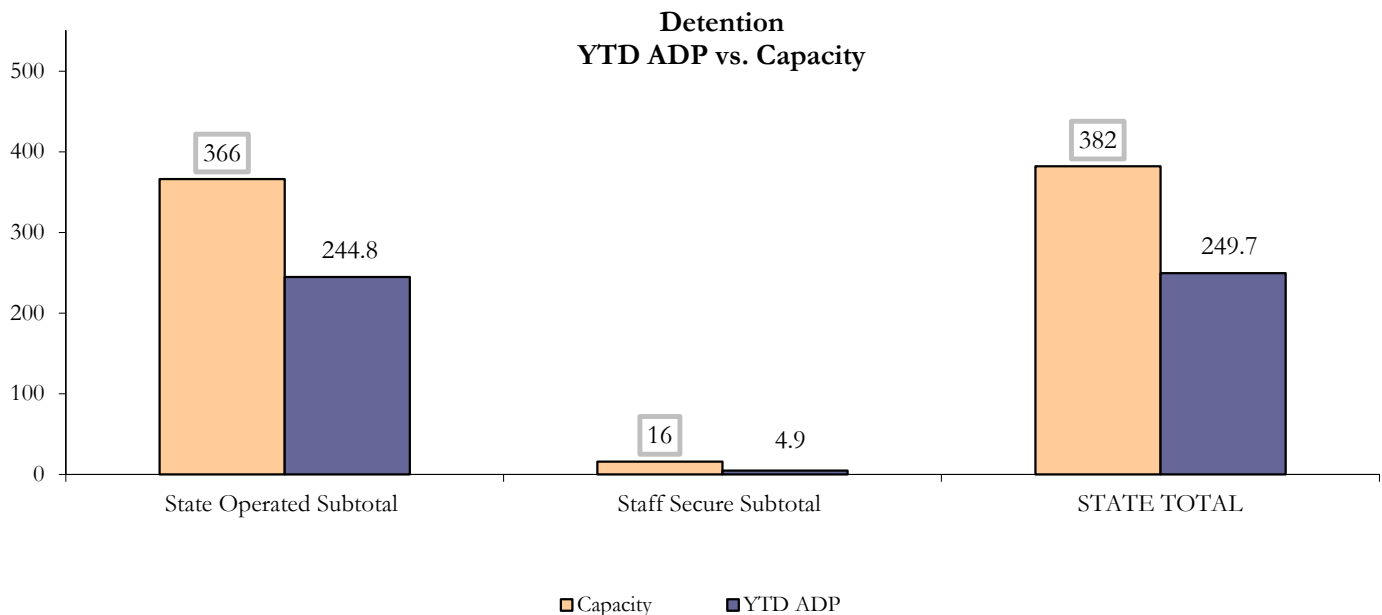
September 2016 DYC Population Report

II. Detention ADP by Facility

State Operated Detention							
Facility	Operating Capacity	Average Daily Population			New Admissions		LOS (days)
		Monthly	YTD	YTD % of Cap	Monthly	YTD	YTD
Adams	30	23.4	21.5	71.8%	37	130	11.9
Gilliam	64	44.8	47.3	73.9%	76	227	18.6
Grand Mesa	27	17.9	15.8	58.4%	34	94	16.0
Marvin Foote	61	33.8	33.6	55.1%	76	237	12.5
Mount View	41	21.5	21.9	53.5%	57	175	12.7
Platte Valley	64	42.4	40.5	63.2%	105	290	13.9
Pueblo	28	20.2	17.5	62.5%	37	113	14.6
Spring Creek	51	45.3	46.6	91.4%	61	204	19.1
State Subtotal	366	249.3	244.8	66.9%	483	1,470	15.0

Staff Secure Detention							
Facility	Operating Capacity	Average Daily Population			New Admissions		LOS (days)
		Monthly	YTD	YTD % of Cap	Monthly	YTD	YTD
Brown Center	3	0.5	0.6	21.2%	3	7	8.5
Robert DeNier	9	2.0	1.9	21.1%	4	18	8.4
Youthtrack San Luis Valley	4	1.8	2.4	59.9%	2	6	34.2
Staff Secure Subtotal	16	4.3	4.9	30.8%	9	31	13.9

STATEWIDE TOTAL							
	Operating Capacity	Average Daily Population			New Admissions		LOS (days)
		Monthly	YTD	YTD % of Cap	Monthly	YTD	YTD
Total Detention	382	253.6	249.7	65.4%	492	1,501	15.0



September 2016 DYC Population Report

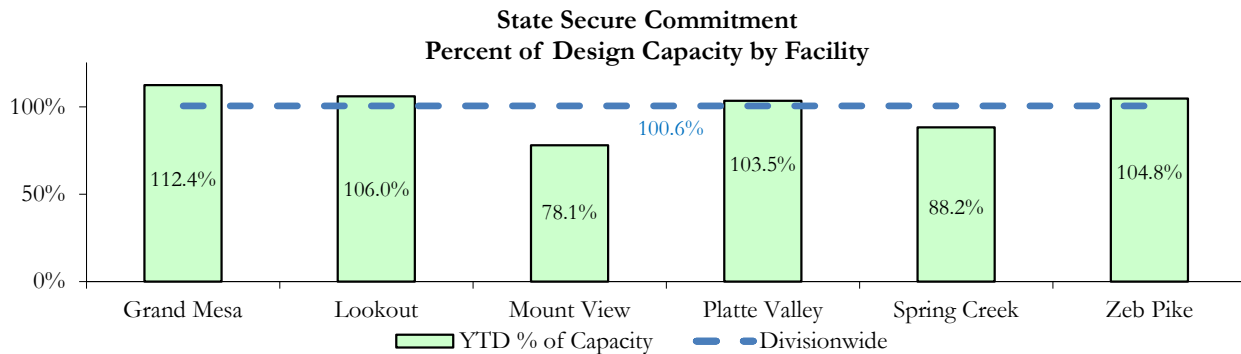
III. Commitment Services

A. State and Contract ADP by Facility

STATE SECURE					
Facility		ADP		Capacity	
		State Secure		Design	
		Monthly	YTD	Capacity	% of YTD
	<i>Adams</i> ¹	0.8	1.0	-	-
	<i>Gilliam</i> ¹	0.1	0.3	-	-
	Grand Mesa	43.6	45.0	40	112.4%
	Lookout	137.9	137.8	130	106.0%
	<i>Marvin Foote</i> ¹	1.5	2.0	-	-
	Mount View	48.4	50.0	64	78.1%
	Platte Valley	44.1	40.4	39	103.5%
	<i>Pueblo</i> ¹	0.3	0.3	-	-
	Spring Creek	21.0	25.6	29	88.2%
	Zeb Pike	37.8	37.7	36	104.8%
	Assessment Total	23.8	30.8	-	
	Secure Total	311.8	309.2	-	
	STATE SECURE TOTAL	335.5	340.1	338	100.6%

¹ Detention only facilities with commitment ADP due to committed youth being held in detention prior to transfer.

CONTRACT: PRIVATE SECURE + STAFF SUPERVISED		
Facility/Program ²	ADP	
	Monthly	YTD
(Private Secure) Betty K. Marler Center	37.8	39.0
(Private Secure) Robert DeNier	6.0	7.0
Alternative Homes For Youth - Greeley	12.5	13.6
Devereux Cleo Wallace	0.8	0.7
Gateway Residential Program - Delta	0.2	0.9
Hilltop (Residential Youth Services)	6.4	5.2
Jefferson Hills - Aurora	31.3	31.9
Ridge View	127.1	129.7
Robert Brown Center	3.0	1.6
Southern Peaks	2.4	2.7
Third Way Center - Lowry	15.1	12.9
<i>Private Secure & Staff Supervised Subtotal</i>	242.6	245.3



² Programs with both Secure and Community placements are aggregated into one category until further TRAILS builds can allow for programs to register as multiple types.

September 2016 DYC Population Report

III. Commitment Services Continued

B. Community/Other Residential ADP by Facility¹

COMMUNITY RESIDENTIAL		
	<i>Monthly</i>	<i>YTD</i>
Dale House Project	7.3	8.4
Denver Area Youth Services (DAYS)	4.1	3.3
Griffith Centers for Children, Inc.	5.4	4.7
Job Corps	5.0	4.3
Kids Crossing	4.0	4.5
Mesa County Community Corrections	0.0	0.3
Mt Evans Qualifying House	6.0	6.4
Reflections for Youth, Inc.-Grismore	0.7	0.2
Savio House	1.1	1.5
Synergy Administration	3.3	3.6
Third Way Center, Bannock	2.7	3.1
Third Way Center, Pontiac	3.7	4.6
Third Way Center, York	5.4	4.3
Third Way Center, Lincoln	7.3	7.8
Turning Point Center, Prospect	0.5	1.5
Turning Point, Mathews St.	6.0	5.9
Whimspire Child Placement	0.0	0.4
Youthtrack, Work and Learn	1.0	1.6
<i>Community Subtotal</i>	<i>63.5</i>	<i>66.6</i>
<i>Private Secure + Staff Supervised + Community Subtotal</i>	<i>306.1</i>	<i>311.9</i>
OTHER RESIDENTIAL		
	<i>Monthly</i>	<i>YTD</i>
Immigration Detention Facility	1.0	1.0
Other Mental Health Facility	0.0	0.03
Residential Mental Health Program	2.0	2.5
Residential Work Program	1.0	1.0
<i>Other Residential Subtotal²</i>	<i>2.9</i>	<i>2.8</i>
RESIDENTIAL TOTAL	644.6	654.7

¹ Programs with both Secure and Community placements are aggregated into one category until further TRAILS builds can allow for programs to register as multiple types.

² Due to relatively few youth referred to these types of placements, the Other Residential Subtotals may not be the sum of individual placements; this is typically the result of rounding errors and the method by which ADP is calculated.

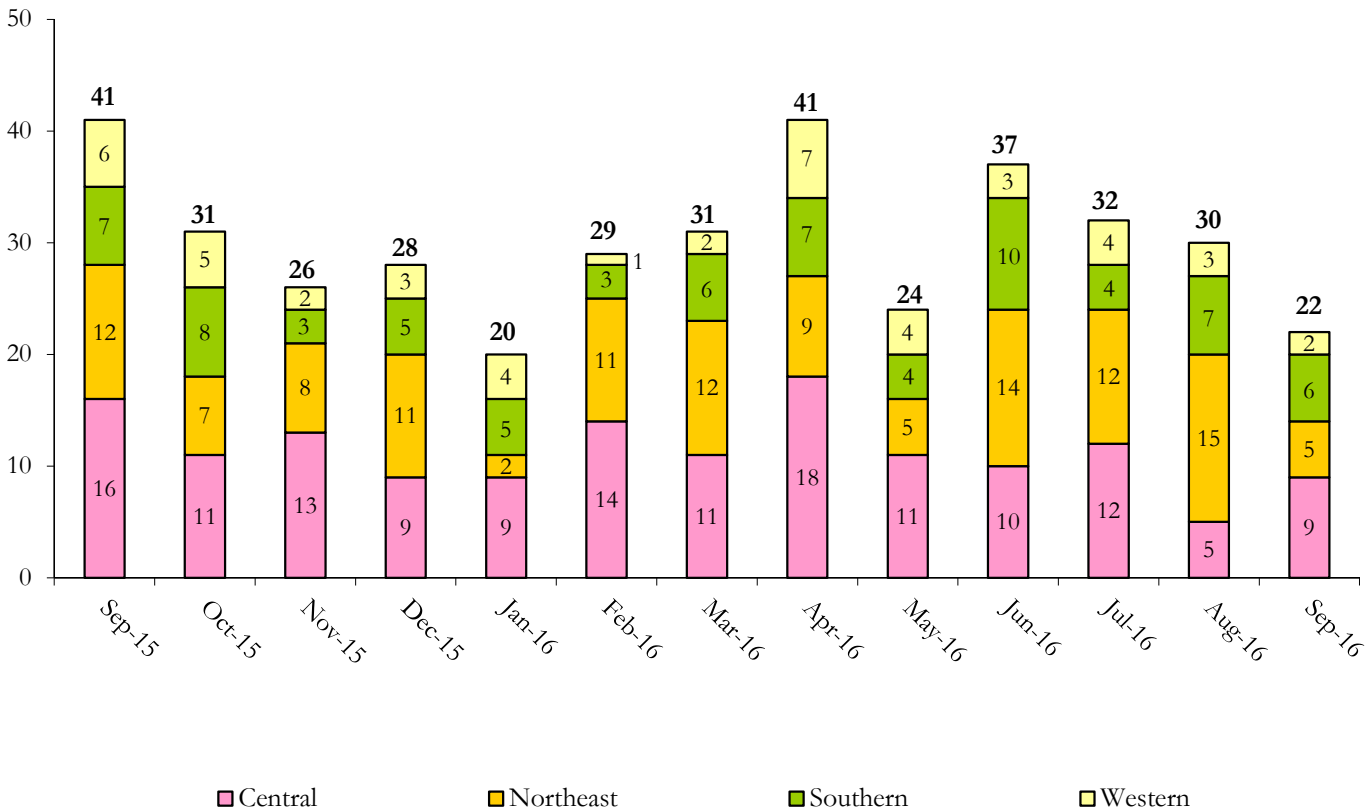
September 2016 DYC Population Report

IV. Commitment ADP and New Commitments by Region

COMMITMENT ADP				
Region	Monthly		YTD	
	September	% Change	September	% Change from Prior FY
Central Region	265.5	-1.5%	273.2	-11.7%
Northeast Region	180.7	0.9%	180.7	-8.4%
Southern Region	136.8	-4.1%	140.0	-8.6%
Western Region	61.6	-0.8%	60.8	-6.7%
Commitment ADP	644.6	-1.3%	654.7	-9.7%

NEW COMMITMENTS					
	FY 16-17		FY 15-16		% Change from last YTD
	September	YTD	September	YTD	
Central Region	9	28	16	36	-22.2%
Northeast Region	5	33	12	33	0.0%
Southern Region	6	17	7	22	-22.7%
Western Region	2	10	6	9	11.1%
TOTAL	22	88	41	100	-12.0%

Monthly New Commitments



September 2016 DYC Population Report

V. Parole Services

PAROLE ADP				
Region	Monthly	YTD		% Change from prev YTD
		FY 16-17	FY 15-16	
Central Region	96.6	100.7	96.1	4.8%
Northeast Region	81.5	78.6	66.3	18.6%
Southern Region	44.3	46.2	51.2	-9.7%
Western Region	18.7	20.7	28.4	-27.3%
Total	241.1	246.2	242.0	1.7%

Region	Parole Intakes		Parole Discharges		
	Monthly	YTD	Monthly	YTD	LOS
Central Region	7	35	18	49	6.7
Northeast Region	6	27	4	19	6.9
Southern Region	6	18	11	21	7.3
Western Region	2	6	5	11	7.1
Total	21	86	38	100	6.9

