

June FY 2015-2016 MONTHLY POPULATION REPORT

Prepared by the Division of Youth Corrections (DYC)
Research and Evaluation Unit
July 21st, 2016



COLORADO

**Office of Children,
Youth & Families**

Division of Youth Corrections

June 2016 DYC Population Report

I. Summary Population Data	1
II. Detention ADP by Facility	2
III. Commitment Services	
A. State and Contract ADP by Facility	3
B. Community/Other Residential ADP by Facility	4
IV. Commitment ADP and New Commitments by Region	5
V. Parole Services	6



June 2016 DYC Population Report

I. Summary Population Data

DETAINED YOUTH

	June 2016		YTD	
	ADP	% change	ADP	LOS
State-Operated	279.3	-1.9%	269.6	15.5 days
Contracted Staff Secure	6.3	23.1%	5.3	14.0 days
Total Detained	285.6	-1.5%	275.0	15.4 days

COMMITTED YOUTH

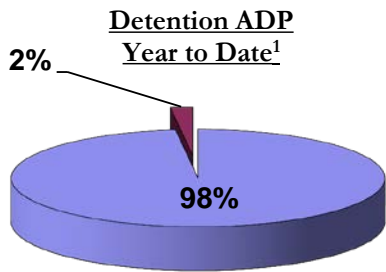
	June 2016		YTD	
	ADP	% change	ADP	LOS
Secure	378.1	-1.3%	382.1	9.7 months
Staff Supervised	205.6	-1.6%	221.1	10.7 months
Community Residential	63.9	-6.9%	80.6	6.4 months
Other Residential	4.3	-10.3%	8.9	2.5 months
Total Committed Residential	651.8	-2.0%	692.6	19.7 months
<i>Committed Residential w/o Boulder</i>	<i>647.8</i>	<i>-1.8%</i>	<i>689.0</i>	<i>-</i>

PAROLE YOUTH

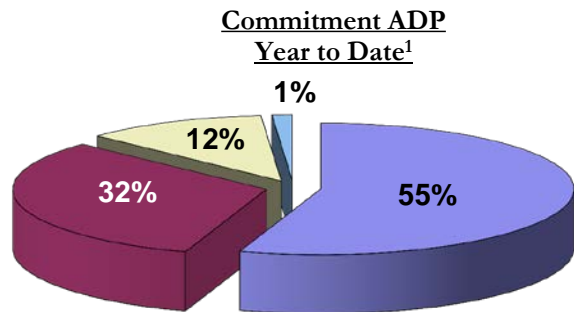
	June 2016		YTD	
	ADP	% change	ADP	LOS
Parole	248.3	3.9%	246.6	7.0 months

TOTAL STATEWIDE ADP

	June 2016		YTD	
	ADP	% change	ADP	LOS
DETENTION	285.6	-1.5%	275.0	15.4 days
COMMITMENT	651.8	-2.0%	692.6	19.7 months
PAROLE	248.3	3.9%	246.6	7.0 months
STATE TOTAL	1,185.7	-0.7%	1,214.2	N/A



■ State-Operated ■ Contracted Staff Secure



■ Secure ■ Staff Supervised ■ Community Residential ■ Other Residential

¹ Due to rounding, totals may not add to 100%.

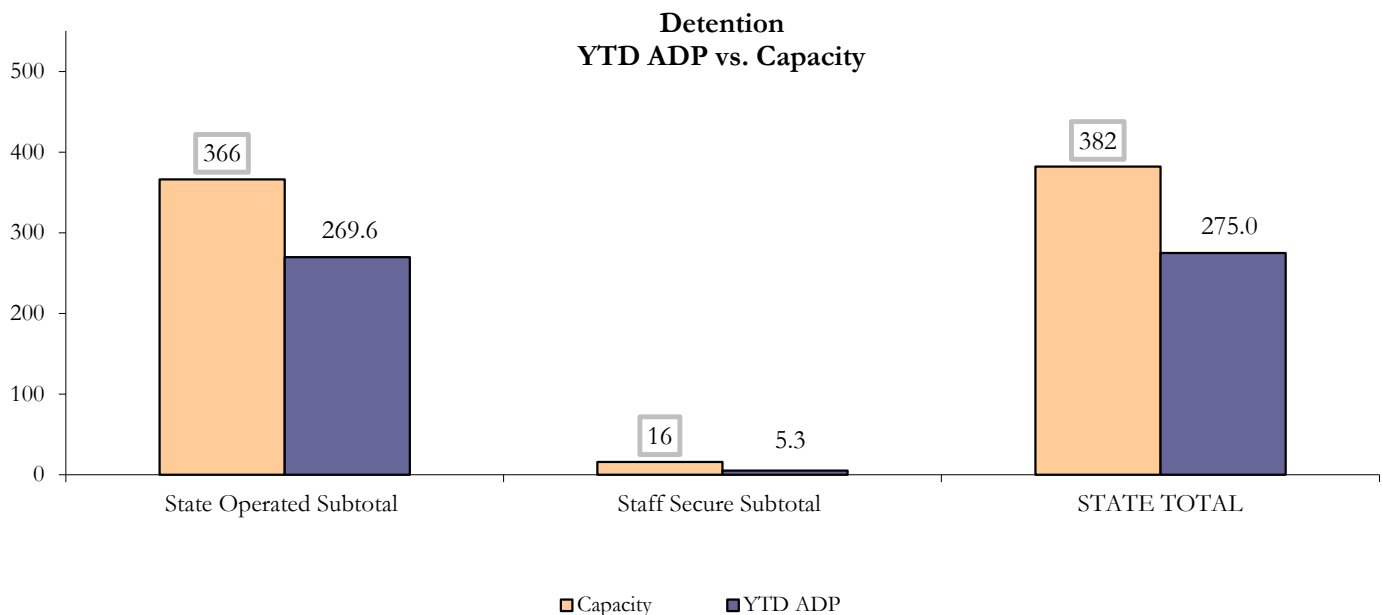
June 2016 DYC Population Report

II. Detention ADP by Facility

State Operated Detention							
Facility	Operating Capacity	Average Daily Population			New Admissions		LOS (days)
		Monthly	YTD	YTD % of Cap	Monthly	YTD	YTD
Adams	30	26.8	24.6	82.0%	51	541	16.5
Gilliam	64	56.5	54.3	84.9%	88	1,114	17.4
Grand Mesa	27	19.7	19.6	72.7%	21	354	17.9
Marvin Foote	61	36.4	39.8	65.2%	90	1,030	14.1
Mount View	41	32.1	27.2	66.2%	58	718	14.7
Platte Valley	64	45.9	43.7	68.4%	98	1,254	13.4
Pueblo	28	20.6	18.8	67.2%	40	568	12.0
Spring Creek	51	41.3	41.6	81.6%	65	790	19.2
State Subtotal	366	279.3	269.6	73.7%	511	6,369	15.5

Staff Secure Detention							
Facility	Operating Capacity	Average Daily Population			New Admissions		LOS (days)
		Monthly	YTD	YTD % of Cap	Monthly	YTD	YTD
Brown Center	3	1.2	1.1	35.6%	2	21	19.9
Robert DeNier	9	3.4	2.3	25.8%	7	68	12.7
Youthtrack San Luis Valley	4	1.7	1.9	48.3%	1	52	13.1
Staff Secure Subtotal	16	6.3	5.3	33.3%	10	141	14.0

STATEWIDE TOTAL							
	Operating Capacity	Average Daily Population			New Admissions		LOS (days)
		Monthly	YTD	YTD % of Cap	Monthly	YTD	YTD
Total Detention	382	285.6	275.0	72.0%	521	6,510	15.4



June 2016 DYC Population Report

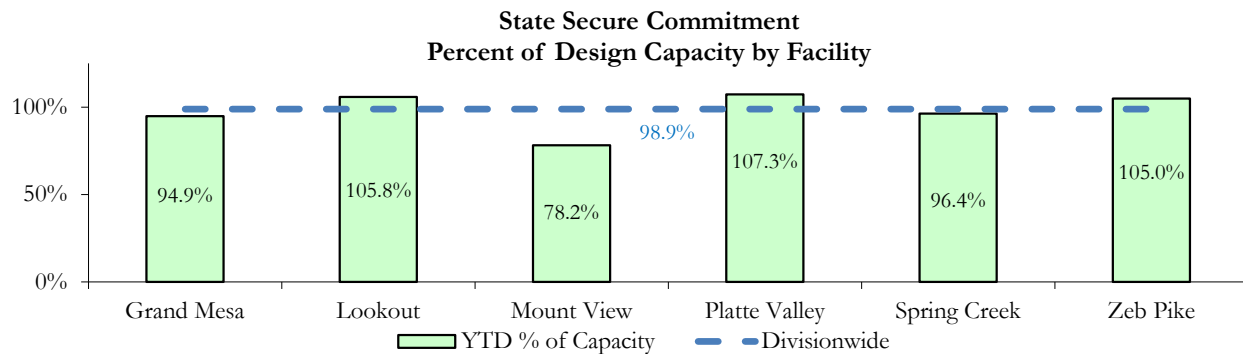
III. Commitment Services

A. State and Contract ADP by Facility

STATE SECURE				
Facility	ADP		Capacity	
	State Secure		Design	
	Monthly	YTD	Capacity	% of YTD
Adams ¹	0.1	0.1	-	-
Gilliam ¹	0.5	0.3	-	-
Grand Mesa	41.2	38.0	40	94.9%
Lookout	137.6	137.5	130	105.8%
Marvin Foote ¹	0.1	0.6	-	-
Mount View	42.1	50.0	64	78.2%
Platte Valley	40.5	41.8	39	107.3%
Pueblo ¹	0.5	0.3	-	-
Spring Creek	28.3	28.0	29	96.4%
Zeb Pike	37.7	37.8	36	105.0%
Assessment Total	30.3	28.4	-	
Secure Total	298.3	305.9	-	
STATE SECURE TOTAL	328.6	334.3	338	98.9%

¹ Detention only facilities with commitment ADP due to committed youth being held in detention prior to transfer.

CONTRACT: PRIVATE SECURE + STAFF SUPERVISED		
Facility/Program ²	ADP	
	Monthly	YTD
(Private Secure) Betty K. Marler Center	38.2	35.4
(Private Secure) Robert DeNier	11.2	12.4
Alternative Homes For Youth - Greeley	14.9	14.4
Devereux Cleo Wallace	1.0	1.4
Gateway Residential Program - Delta	2.7	3.0
Hilltop (Residential Youth Services)	4.9	5.0
Jefferson Hills - Aurora	35.5	46.4
Ridge View	129.9	133.8
Robert Brown Center	0.0	1.0
Southern Peaks	3.3	3.6
Third Way Center - Lowry	13.5	12.3
<i>Private Secure & Staff Supervised Subtotal</i>	255.0	268.8



² Programs with both Secure and Community placements are aggregated into one category until further TRAILS builds can allow for programs to register as multiple types.

June 2016 DYC Population Report

III. Commitment Services Continued

B. Community/Other Residential ADP by Facility¹

COMMUNITY RESIDENTIAL		
	<i>Monthly</i>	<i>YTD</i>
Attention Homes, Chase House	0.0	0.02
Community Corrections: Comcor	0.0	0.08
Dale House Project	8.2	9.4
Denver Area Youth Services (DAYS)	3.1	2.5
Gateway Residential Program - Grand Junction	0.0	0.4
Griffith Centers for Children, Inc.	2.8	6.4
Job Corps	2.9	2.8
Kids Crossing	4.4	3.8
Maple Star	0.0	0.4
Mesa County Community Corrections	0.0	0.9
Mt Evans Qualifying House	4.0	7.2
Reflections for Youth, Inc.-Grismore	0.0	0.2
Rocky Mountain Youth Center ³	0.0	0.4
Savio House	1.0	1.2
Synergy Administration	3.3	4.6
Third Way Center, Bannock	2.6	2.6
Third Way Center, Pontiac	5.0	7.0
Third Way Center, York	4.0	5.8
Third Way Center, Lincoln	8.4	7.3
Turning Point Center, Prospect	2.1	3.1
Turning Point, Mathews St.	8.2	7.9
Whimspire Child Placement	1.0	1.3
Youthtrack, Work and Learn	2.9	5.2
<i>Community Subtotal</i>	<i>63.9</i>	<i>80.6</i>
<i>Private Secure + Staff Supervised + Community Subtotal</i>	<i>318.9</i>	<i>349.4</i>

OTHER RESIDENTIAL		
	<i>Monthly</i>	<i>YTD</i>
CMHI-Pueblo	0.2	0.12
Hospital	0.3	0.13
Immigration Detention Facility	0.0	0.1
Job Corps Parole Program (Federally funded)	0.2	2.6
Other Mental Health Facility	0.0	0.5
Residential Drug/Alcohol Program	0.0	0.15
Residential Mental Health Program	2.5	2.2
Residential Work Program	1.0	0.25
Shelter Care (short term)	0.0	0.2
<i>Other Residential Subtotal²</i>	<i>4.3</i>	<i>8.9</i>
RESIDENTIAL TOTAL	651.8	692.6

¹ Programs with both Secure and Community placements are aggregated into one category until further TRAILS builds can allow for programs

² Due to relatively few youth referred to these types of placements, the Other Residential Subtotals may not be the sum of individual placements; this is typically the result of rounding errors and the method by which ADP is calculated.

³ Provider underwent name change, was previously reported as Youthtrack San Luis Valley Youth Center.

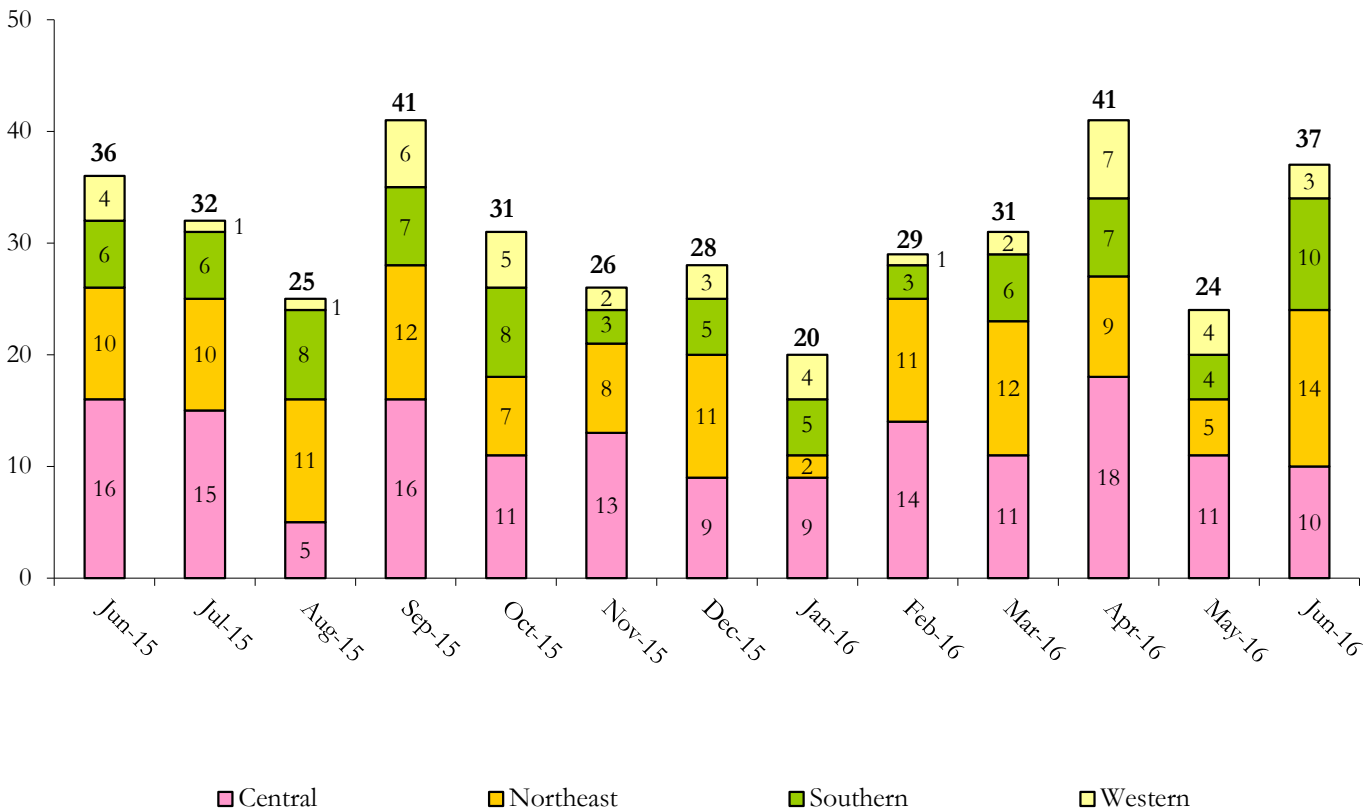
June 2016 DYC Population Report

IV. Commitment ADP and New Commitments by Region

COMMITMENT ADP				
Region	Monthly		YTD	
	June	% Change	June	% Change from Prior FY
Central Region	283.5	-2.7%	298.0	-4.9%
Northeast Region	178.6	-5.6%	191.0	-4.3%
Southern Region	134.5	4.7%	142.9	-8.8%
Western Region	55.2	-2.3%	60.7	-13.5%
Commitment ADP	651.8	-2.0%	692.6	-6.4%

NEW COMMITMENTS					
	FY 15-16		FY 14-15		% Change from last YTD
	June	YTD	June	YTD	
Central Region	10	149	16	158	-5.7%
Northeast Region	14	117	10	137	-14.6%
Southern Region	10	74	6	76	-2.6%
Western Region	3	41	4	39	5.1%
TOTAL	37	381	36	410	-7.1%

Monthly New Commitments



June 2016 DYC Population Report

V. Parole Services

PAROLE ADP				
Region	Monthly	YTD		% Change from prev YTD
		FY 15-16	FY 14-15	
Central Region	97.2	102.8	100.6	2.2%
Northeast Region	74.1	71.0	73.8	-3.8%
Southern Region	53.7	49.3	43.9	12.2%
Western Region	23.2	23.6	27.4	-13.9%
Total	248.3	246.6	245.6	0.4%

Region	Parole Intakes		Parole Discharges		LOS
	Monthly	YTD	Monthly	YTD	
Central Region	16	161	11	170	7.4
Northeast Region	15	132	6	118	6.6
Southern Region	3	77	7	95	7.2
Western Region	5	42	3	48	6.3
Total	39	412	27	431	7.0

