

# May FY 2015-2016 MONTHLY POPULATION REPORT

---

Prepared by the Division of Youth Corrections (DYC)  
Research and Evaluation Unit  
June 22nd, 2016



**COLORADO**

**Office of Children,  
Youth & Families**

Division of Youth Corrections

# May 2016 DYC Population Report

I.	Summary Population Data	1
II.	Detention ADP by Facility	2
III.	Commitment Services	
	A. State and Contract ADP by Facility	3
	B. Community/Other Residential ADP by Facility	4
IV.	Commitment ADP and New Commitments by Region	5
V.	Parole Services	6



# May 2016 DYC Population Report

## I. Summary Population Data

### DETAINED YOUTH

	May 2016		YTD	
	ADP	% change	ADP	LOS
State-Operated	284.8	-0.1%	269.2	15.4 days
Contracted Staff Secure	5.1	35.5%	5.2	13.5 days
<b>Total Detained</b>	<b>289.9</b>	<b>0.4%</b>	<b>274.4</b>	<b>15.4 days</b>

### COMMITTED YOUTH

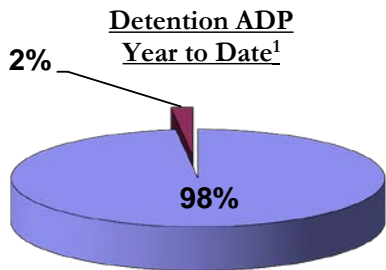
	May 2016		YTD	
	ADP	% change	ADP	LOS
Secure	382.9	-0.2%	382.4	9.8 months
Staff Supervised	208.9	0.4%	222.6	10.7 months
Community Residential	68.7	-0.2%	82.1	6.5 months
Other Residential	4.7	-50.8%	8.8	2.5 months
<b>Total Committed Residential</b>	<b>665.2</b>	<b>-0.7%</b>	<b>695.9</b>	<b>19.9 months</b>
<i>Committed Residential w/o Boulder</i>	<i>659.4</i>	<i>-0.9%</i>	<i>692.2</i>	<i>-</i>

### PAROLE YOUTH

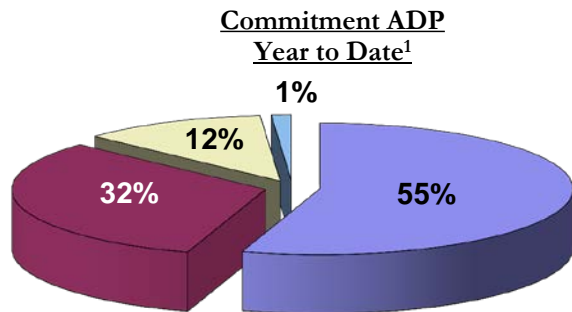
	May 2016		YTD	
	ADP	% change	ADP	LOS
Parole	238.9	-4.2%	245.3	7.1 months

### TOTAL STATEWIDE ADP

	May 2016		YTD	
	ADP	% change	ADP	LOS
DETENTION	289.9	0.4%	274.4	15.4 days
COMMITMENT	665.2	-0.7%	695.9	19.9 months
PAROLE	238.9	-4.2%	245.3	7.1 months
<b>STATE TOTAL</b>	<b>1,194.1</b>	<b>-1.2%</b>	<b>1,215.6</b>	<b>N/A</b>



■ State-Operated ■ Contracted Staff Secure



■ Secure ■ Staff Supervised ■ Community Residential ■ Other Residential

<sup>1</sup> Due to rounding, totals may not add to 100%.

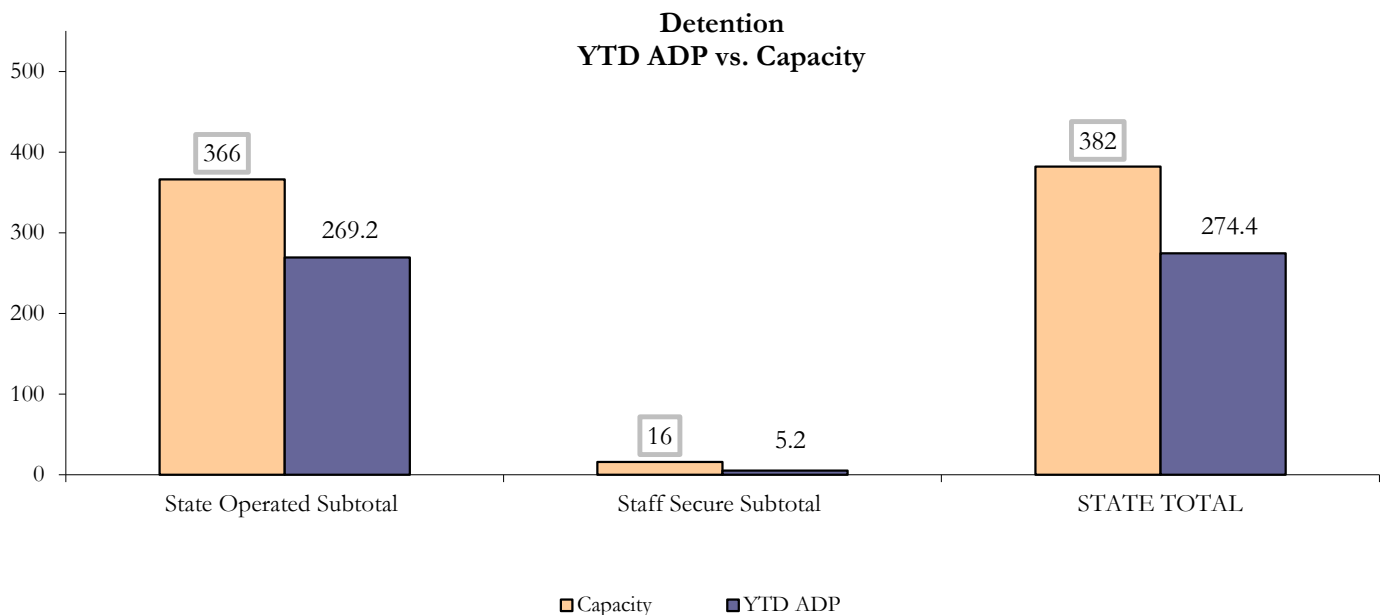
# May 2016 DYC Population Report

## II. Detention ADP by Facility

State Operated Detention							
Facility	Operating Capacity	Average Daily Population			New Admissions		LOS (days)
		Monthly	YTD	YTD % of Cap	Monthly	YTD	YTD
Adams	30	24.6	24.4	81.3%	47	490	16.2
Gilliam	64	56.9	54.1	84.6%	98	1,026	17.5
Grand Mesa	27	18.7	19.6	72.7%	32	333	17.5
Marvin Foote	61	39.3	40.1	65.7%	96	940	14.4
Mount View	41	35.3	26.6	65.0%	69	658	14.5
Platte Valley	64	42.4	43.6	68.1%	107	1,156	13.2
Pueblo	28	21.6	18.7	66.6%	49	528	11.7
Spring Creek	51	46.1	42.1	82.5%	77	725	19.3
<b>State Subtotal</b>	<b>366</b>	<b>284.8</b>	<b>269.2</b>	<b>73.5%</b>	<b>575</b>	<b>5,856</b>	<b>15.4</b>

Staff Secure Detention							
Facility	Operating Capacity	Average Daily Population			New Admissions		LOS (days)
		Monthly	YTD	YTD % of Cap	Monthly	YTD	YTD
Brown Center	3	1.2	1.1	35.1%	3	19	19.4
Robert DeNier	9	1.4	2.2	24.7%	7	61	12.5
Youthtrack San Luis Valley	4	2.5	2.0	48.9%	4	51	12.4
<b>Staff Secure Subtotal</b>	<b>16</b>	<b>5.1</b>	<b>5.2</b>	<b>32.7%</b>	<b>14</b>	<b>131</b>	<b>13.5</b>

STATEWIDE TOTAL							
	Operating Capacity	Average Daily Population			New Admissions		LOS (days)
		Monthly	YTD	YTD % of Cap	Monthly	YTD	YTD
<b>Total Detention</b>	<b>382</b>	<b>289.9</b>	<b>274.4</b>	<b>71.8%</b>	<b>589</b>	<b>5,987</b>	<b>15.4</b>



# May 2016 DYC Population Report

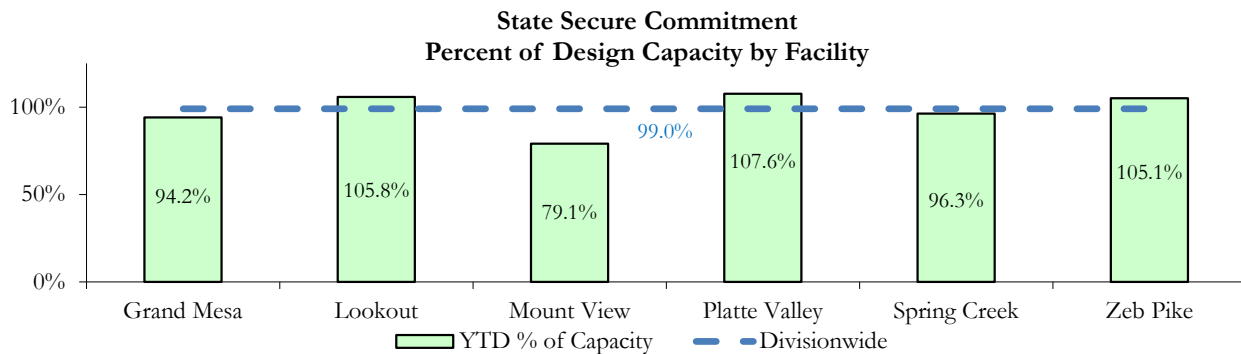
## III. Commitment Services

### A. State and Contract ADP by Facility

STATE SECURE				
Facility	ADP		Capacity	
	State Secure		Design	
	Monthly	YTD	Capacity	% of YTD
Adams <sup>1</sup>	0.0	0.1	-	-
Gilliam <sup>1</sup>	0.1	0.3	-	-
Grand Mesa	40.1	37.7	40	94.2%
Lookout	136.9	137.5	130	105.8%
Marvin Foote <sup>1</sup>	0.1	0.6	-	-
Mount View	49.5	50.6	64	79.1%
Platte Valley	38.9	42.0	39	107.6%
Pueblo <sup>1</sup>	0.3	0.2	-	-
Spring Creek	27.5	27.9	29	96.3%
Zeb Pike	38.0	37.8	36	105.1%
<b>Assessment Total</b>	<b>33.7</b>	<b>28.3</b>	-	
<b>Secure Total</b>	<b>297.5</b>	<b>306.5</b>	-	
<b>STATE SECURE TOTAL</b>	<b>331.2</b>	<b>334.7</b>	<b>338</b>	<b>99.0%</b>

<sup>1</sup> Detention only facilities with commitment ADP due to committed youth being held in detention prior to transfer.

CONTRACT: PRIVATE SECURE + STAFF SUPERVISED		
Facility/Program <sup>2</sup>	ADP	
	Monthly	YTD
(Private Secure) Betty K. Marler Center	38.5	35.1
(Private Secure) Robert DeNier	13.3	12.5
Alternative Homes For Youth - Greeley	14.7	14.4
Devereux Cleo Wallace	1.0	1.4
Gateway Residential Program - Delta	2.8	3.0
Hilltop (Residential Youth Services)	6.4	5.0
Jefferson Hills - Aurora	40.3	47.5
Ridge View	126.1	134.2
Robert Brown Center	0.7	1.1
Southern Peaks	3.0	3.7
Third Way Center - Lowry	13.9	12.2
<i>Private Secure &amp; Staff Supervised Subtotal</i>	<b>260.6</b>	<b>270.2</b>



<sup>2</sup> Programs with both Secure and Community placements are aggregated into one category until further TRAILS builds can allow for programs to register as multiple types.

# May 2016 DYC Population Report

## III. Commitment Services Continued

### B. Community/Other Residential ADP by Facility<sup>1</sup>

<b>COMMUNITY RESIDENTIAL</b>		
	<i>Monthly</i>	<i>YTD</i>
Attention Homes, Chase House	0.0	0.03
Community Corrections: Comcor	0.3	0.09
Dale House Project	7.3	9.5
Denver Area Youth Services (DAYS)	5.4	2.5
Gateway Residential Program - Grand Junction	0.0	0.4
Griffith Centers for Children, Inc.	4.2	6.7
Job Corps	1.9	2.8
Kids Crossing	4.4	3.8
Maple Star	0.0	0.4
Mesa County Community Corrections	0.0	0.9
Mt Evans Qualifying House	6.1	7.5
Reflections for Youth, Inc.-Grismore	1.0	0.2
Rocky Mountain Youth Center <sup>3</sup>	0.0	0.5
Savio House	0.6	1.2
Synergy Administration	2.8	4.8
Third Way Center, Bannock	1.4	2.6
Third Way Center, Pontiac	6.2	7.2
Third Way Center, York	6.0	6.3
Third Way Center, Lincoln	7.9	6.9
Turning Point Center, Prospect	3.0	3.2
Turning Point, Mathews St.	7.2	7.9
Whimspire Child Placement	1.0	1.3
Youthtrack, Work and Learn	1.9	5.4
<i>Community Subtotal</i>	<i>68.7</i>	<i>82.1</i>
<b><i>Private Secure + Staff Supervised + Community Subtotal</i></b>	<b><i>329.3</i></b>	<b><i>352.3</i></b>

<b>OTHER RESIDENTIAL</b>		
	<i>Monthly</i>	<i>YTD</i>
CMHI-Pueblo	0.6	0.12
Hospital	0.0	0.08
Immigration Detention Facility	0.3	0.1
Job Corps Parole Program (Federally funded)	1.1	2.8
Other Mental Health Facility	0.0	0.5
Residential Drug/Alcohol Program	0.0	0.15
Residential Mental Health Program	2.0	2.2
Residential Work Program	1.0	0.18
Shelter Care (short term)	0.0	0.3
<i>Other Residential Subtotal<sup>2</sup></i>	<i>4.7</i>	<i>8.8</i>
<b>RESIDENTIAL TOTAL</b>	<b>665.2</b>	<b>695.9</b>

<sup>1</sup> Programs with both Secure and Community placements are aggregated into one category until further TRAILS builds can allow for programs

<sup>2</sup> Due to relatively few youth referred to these types of placements, the Other Residential Subtotals may not be the sum of individual placements; this is typically the result of rounding errors and the method by which ADP is calculated.

<sup>3</sup> Provider underwent name change, was previously reported as Youthtrack San Luis Valley Youth Center.

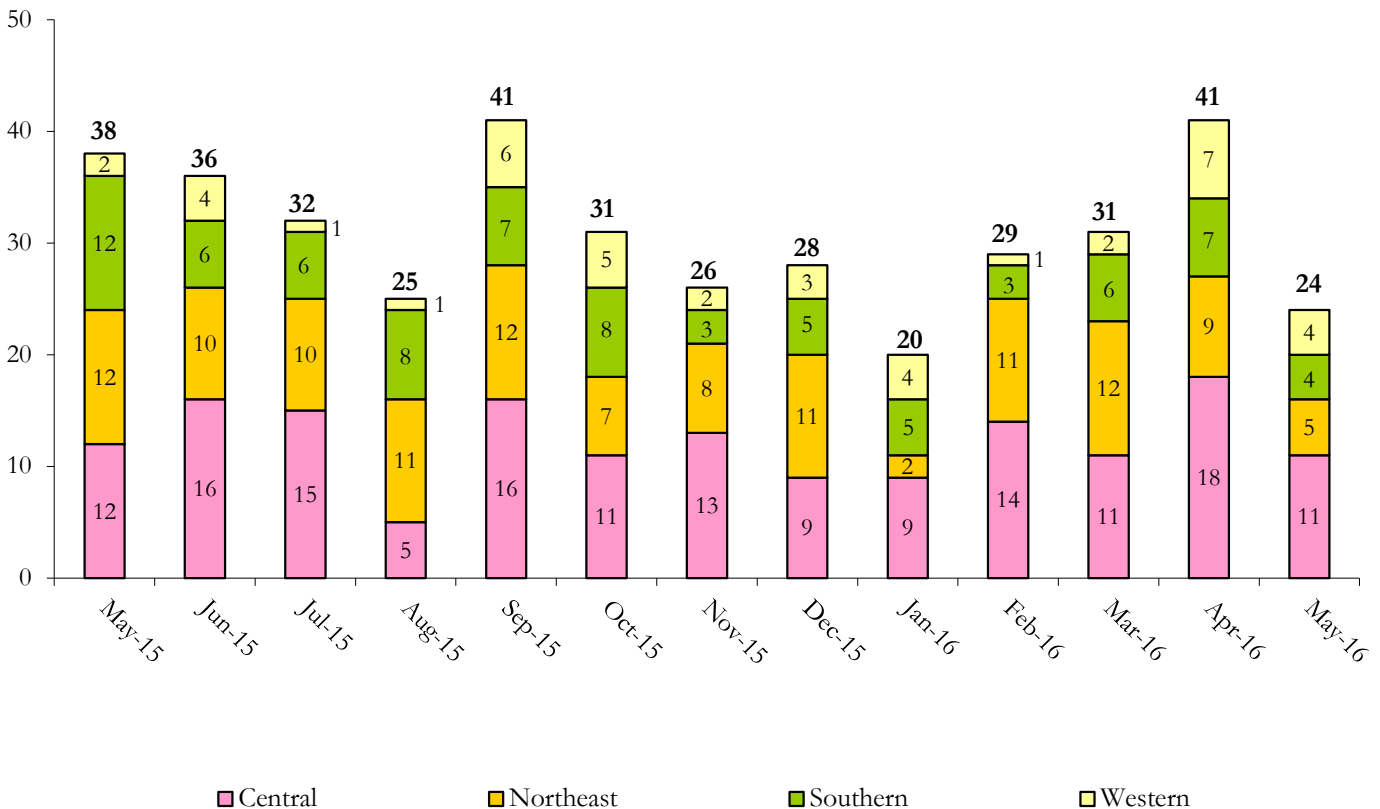
# May 2016 DYC Population Report

## IV. Commitment ADP and New Commitments

COMMITMENT ADP				
Region	Monthly		YTD	
	May	% Change	May	% Change from Prior FY
Central Region	291.3	0.6%	301.1	-4.2%
Northeast Region	189.1	-4.2%	191.3	-4.3%
Southern Region	128.4	0.5%	142.2	-9.0%
Western Region	56.5	2.2%	61.2	-12.8%
<b>Commitment ADP</b>	665.2	-0.7%	695.9	-6.1%

NEW COMMITMENTS					
	FY 15-16		FY 14-15		% Change from last YTD
	May	YTD	May	YTD	
Central Region	11	136	12	142	-4.2%
Northeast Region	5	102	12	127	-19.7%
Southern Region	4	64	12	70	-8.6%
Western Region	4	38	2	34	11.8%
<b>TOTAL</b>	<b>24</b>	<b>340</b>	<b>38</b>	<b>373</b>	<b>-8.8%</b>

### Monthly New Commitments



# May 2016 DYC Population Report

## V. Parole Services

PAROLE ADP				
Region	Monthly	YTD		% Change from prev YTD
		FY 15-16	FY 14-15	
Central Region	95.1	102.3	100.7	1.6%
Northeast Region	66.5	70.6	74.7	-5.4%
Southern Region	54.1	48.8	42.4	15.0%
Western Region	23.2	23.6	27.5	-14.1%
<b>Total</b>	<b>238.9</b>	<b>245.3</b>	<b>245.2</b>	<b>0.0%</b>

Region	Parole Intakes		Parole Discharges		
	Monthly	YTD	Monthly	YTD	LOS
Central Region	12	146	14	158	7.5
Northeast Region	14	116	9	110	6.7
Southern Region	2	73	4	88	7.3
Western Region	2	37	5	45	6.4
<b>Total</b>	<b>30</b>	<b>372</b>	<b>32</b>	<b>401</b>	<b>7.1</b>

