

April FY 2015-2016 MONTHLY POPULATION REPORT

Prepared by the Division of Youth Corrections (DYC)
Research and Evaluation Unit
May 19th, 2016



COLORADO

**Office of Children,
Youth & Families**

Division of Youth Corrections

April 2016 DYC Population Report

I. Summary Population Data	1
II. Detention ADP by Facility	2
III. Commitment Services	
A. State and Contract ADP by Facility	3
B. Community/Other Residential ADP by Facility	4
IV. Commitment ADP and New Commitments by Region	5
V. Parole Services	6



April 2016 DYC Population Report

I. Summary Population Data

DETAINED YOUTH

	April 2016		YTD	
	ADP	% change	ADP	LOS
State-Operated	285.0	-1.2%	268.0	15.4 days
Contracted Staff Secure	3.8	-39.2%	5.2	13.7 days
Total Detained	288.8	-2.0%	273.2	15.4 days

COMMITTED YOUTH

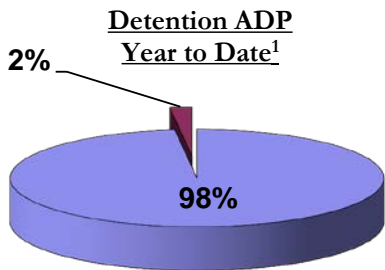
	April 2016		YTD	
	ADP	% change	ADP	LOS
Secure	383.5	-2.0%	381.9	9.9 months
Staff Supervised	208.2	1.5%	223.9	11.0 months
Community Residential	68.8	-4.2%	83.5	6.6 months
Other Residential	9.6	12.6%	9.7	2.6 months
Total Committed Residential	670.1	-1.0%	699.0	19.9 months
<i>Committed Residential w/o Boulder</i>	<i>665.6</i>	<i>-1.2%</i>	<i>695.6</i>	-

PAROLE YOUTH

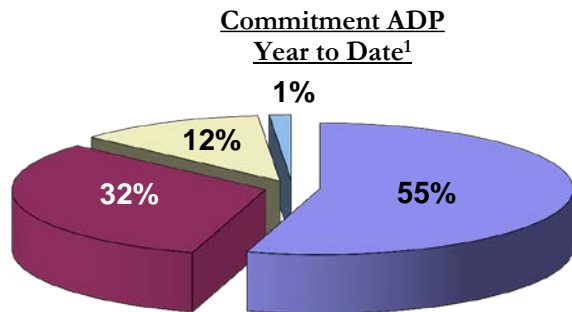
	April 2016		YTD	
	ADP	% change	ADP	LOS
Parole	249.5	1.8%	245.6	7.0 months

TOTAL STATEWIDE ADP

	April 2016		YTD	
	ADP	% change	ADP	LOS
DETENTION	288.8	-2.0%	273.2	15.4 days
COMMITMENT	670.1	-1.0%	699.0	19.9 months
PAROLE	249.5	1.8%	245.6	7.0 months
STATE TOTAL	1,208.4	-0.7%	1,217.8	<i>N/A</i>



■ State-Operated ■ Contracted Staff Secure



■ Secure ■ Staff Supervised ■ Community Residential ■ Other Residential

¹ Due to rounding, totals may not add to 100%.

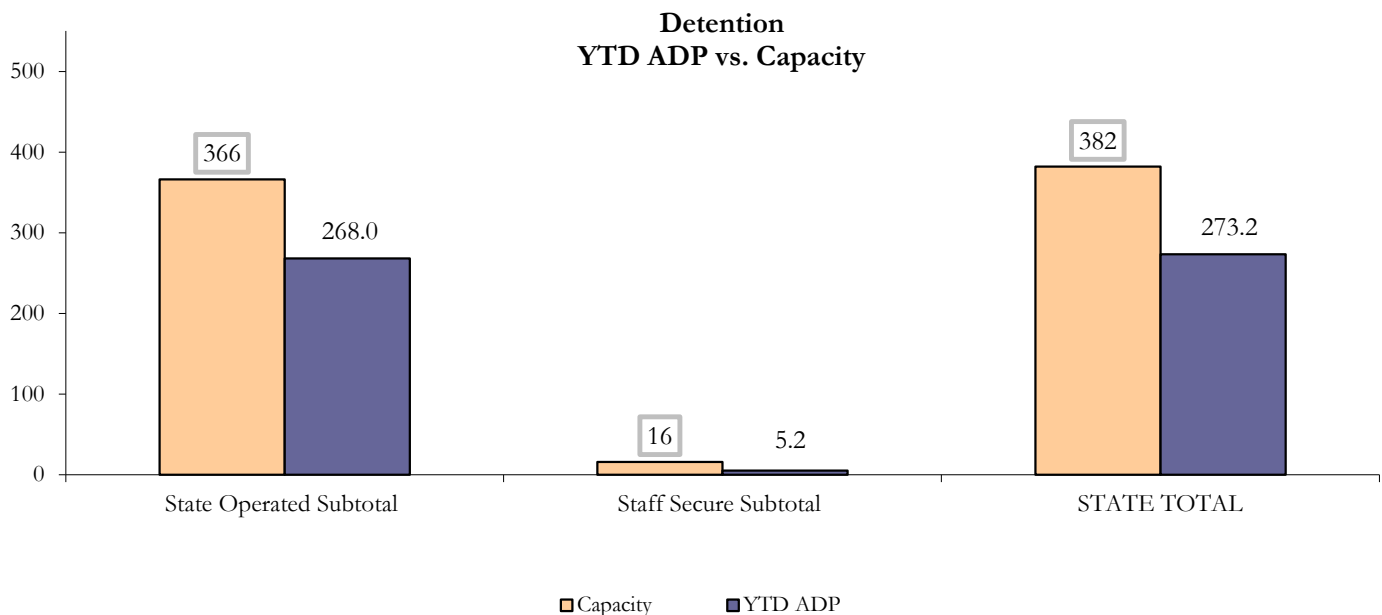
April 2016 DYC Population Report

II. Detention ADP by Facility

State Operated Detention							
Facility	Operating Capacity	Average Daily Population			New Admissions		LOS (days)
		Monthly	YTD	YTD % of Cap	Monthly	YTD	YTD
Adams	30	19.7	24.4	81.2%	45	443	16.5
Gilliam	64	52.8	53.8	84.1%	99	928	17.3
Grand Mesa	27	21.8	19.7	73.0%	27	301	18.0
Marvin Foote	61	40.5	40.2	65.8%	79	844	14.3
Mount View	41	33.3	26.0	63.5%	79	593	14.8
Platte Valley	64	51.6	43.7	68.2%	98	1,049	13.3
Pueblo	28	21.4	18.4	65.6%	50	479	11.7
Spring Creek	51	43.9	41.8	81.9%	69	648	19.4
State Subtotal	366	285.0	268.0	73.2%	546	5,285	15.4

Staff Secure Detention							
Facility	Operating Capacity	Average Daily Population			New Admissions		LOS (days)
		Monthly	YTD	YTD % of Cap	Monthly	YTD	YTD
Brown Center	3	0.1	1.0	34.8%	1	16	21.9
Robert DeNier	9	2.3	2.3	25.6%	10	54	13.1
Youthtrack San Luis Valley	4	1.4	1.9	47.4%	4	47	11.6
Staff Secure Subtotal	16	3.8	5.2	32.8%	15	117	13.7

STATEWIDE TOTAL							
	Operating Capacity	Average Daily Population			New Admissions		LOS (days)
		Monthly	YTD	YTD % of Cap	Monthly	YTD	YTD
Total Detention	382	288.8	273.2	71.5%	561	5,402	15.4



April 2016 DYC Population Report

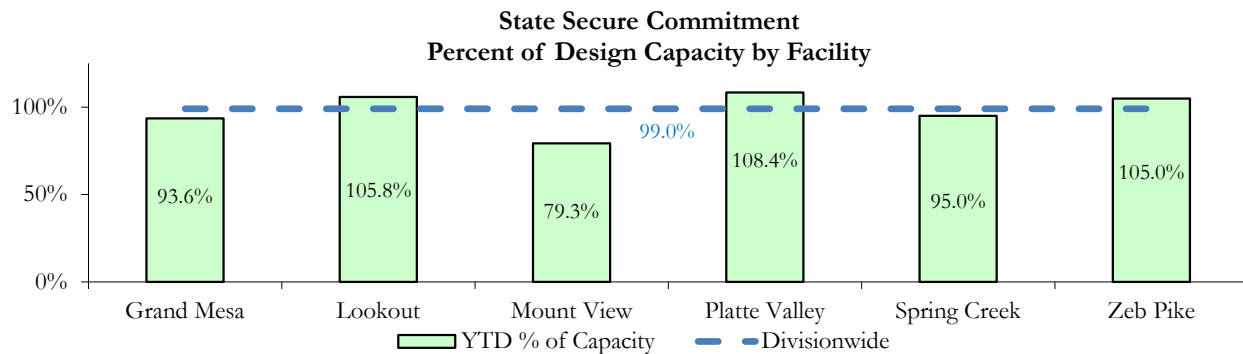
III. Commitment Services

A. State and Contract ADP by Facility

STATE SECURE				
Facility	ADP		Capacity	
	State Secure		Design	
	Monthly	YTD	Capacity	% of YTD
Adams ¹	0.0	0.1	-	-
Gilliam ¹	0.1	0.3	-	-
Grand Mesa	36.1	37.4	40	93.6%
Lookout	137.5	137.6	130	105.8%
Marvin Foote ¹	0.0	0.7	-	-
Mount View	51.2	50.7	64	79.3%
Platte Valley	42.4	42.3	39	108.4%
Pueblo ¹	0.0	0.2	-	-
Spring Creek	25.2	27.5	29	95.0%
Zeb Pike	38.7	37.8	36	105.0%
Assessment Total	30.7	27.7	-	
Secure Total	300.4	306.9	-	
STATE SECURE TOTAL	331.1	334.6	338	99.0%

¹ Detention only facilities with commitment ADP due to committed youth being held in detention prior to transfer.

CONTRACT: PRIVATE SECURE + STAFF SUPERVISED		
Facility/Program ²	ADP	
	Monthly	YTD
(Private Secure) Betty K. Marler Center	40.1	34.8
(Private Secure) Robert DeNier	12.3	12.4
Alternative Homes For Youth - Greeley	13.3	14.4
Devereux Cleo Wallace	0.7	1.5
Gateway Residential Program - Delta	2.9	3.0
Hilltop (Residential Youth Services)	7.3	4.9
Jefferson Hills - Aurora	39.9	48.2
Ridge View	124.7	135.0
Robert Brown Center	3.0	1.2
Southern Peaks	2.9	3.7
Third Way Center - Lowry	13.4	12.1
<i>Private Secure & Staff Supervised Subtotal</i>	260.5	271.2



² Programs with both Secure and Community placements are aggregated into one category until further TRAILS builds can allow for programs to register as multiple types.

April 2016 DYC Population Report

III. Commitment Services Continued

B. Community/Other Residential ADP by Facility¹

COMMUNITY RESIDENTIAL		
	<i>Monthly</i>	<i>YTD</i>
Attention Homes, Chase House	0.0	0.03
Community Corrections: Comcor	0.2	0.06
Dale House Project	7.4	9.7
Denver Area Youth Services (DAYS)	4.3	2.2
Gateway Residential Program - Grand Junction	0.0	0.4
Griffith Centers for Children, Inc.	6.7	7.0
Job Corps	1.0	2.8
Kids Crossing	4.0	3.7
Maple Star	0.0	0.5
Mesa County Community Corrections	0.7	1.0
Mt Evans Qualifying House	5.6	7.6
Reflections for Youth, Inc.-Grismore	1.0	0.2
Savio House	0.0	1.3
Synergy Administration	1.5	5.0
Third Way Center, Bannock	1.7	3.2
Third Way Center, Pontiac	7.3	6.8
Third Way Center, York	5.7	6.4
Third Way Center, Lincoln	8.9	6.8
Turning Point Center, Prospect	3.0	3.3
Turning Point, Mathews St.	5.9	7.9
Whimspire Child Placement	1.0	1.3
Youthtrack, San Luis Valley	0.0	0.5
Youthtrack, Work and Learn	2.8	5.8
<i>Community Subtotal</i>	<i>68.8</i>	<i>83.5</i>
<i>Private Secure + Staff Supervised + Community Subtotal</i>	<i>329.3</i>	<i>354.6</i>
OTHER RESIDENTIAL		
	<i>Monthly</i>	<i>YTD</i>
CMHI-Pueblo	0.1	0.07
Hospital	0.0	0.09
Immigration Detention Facility	0.3	0.0
Job Corps Parole Program (Federally funded)	3.6	3.0
Other Mental Health Facility	0.0	0.6
Residential Drug/Alcohol Program	0.4	0.17
Residential Mental Health Program	2.9	2.2
Residential Work Program	0.8	0.10
Shelter Care (short term)	0.3	0.3
<i>Other Residential Subtotal²</i>	<i>9.6</i>	<i>9.7</i>
RESIDENTIAL TOTAL	670.1	699.0

¹ Programs with both Secure and Community placements are aggregated into one category until further TRAILS builds can allow for programs to register as multiple types.

² Due to relatively few youth referred to these types of placements, the Other Residential Subtotals may not be the sum of individual placements; this is typically the result of rounding errors and the method by which ADP is calculated.

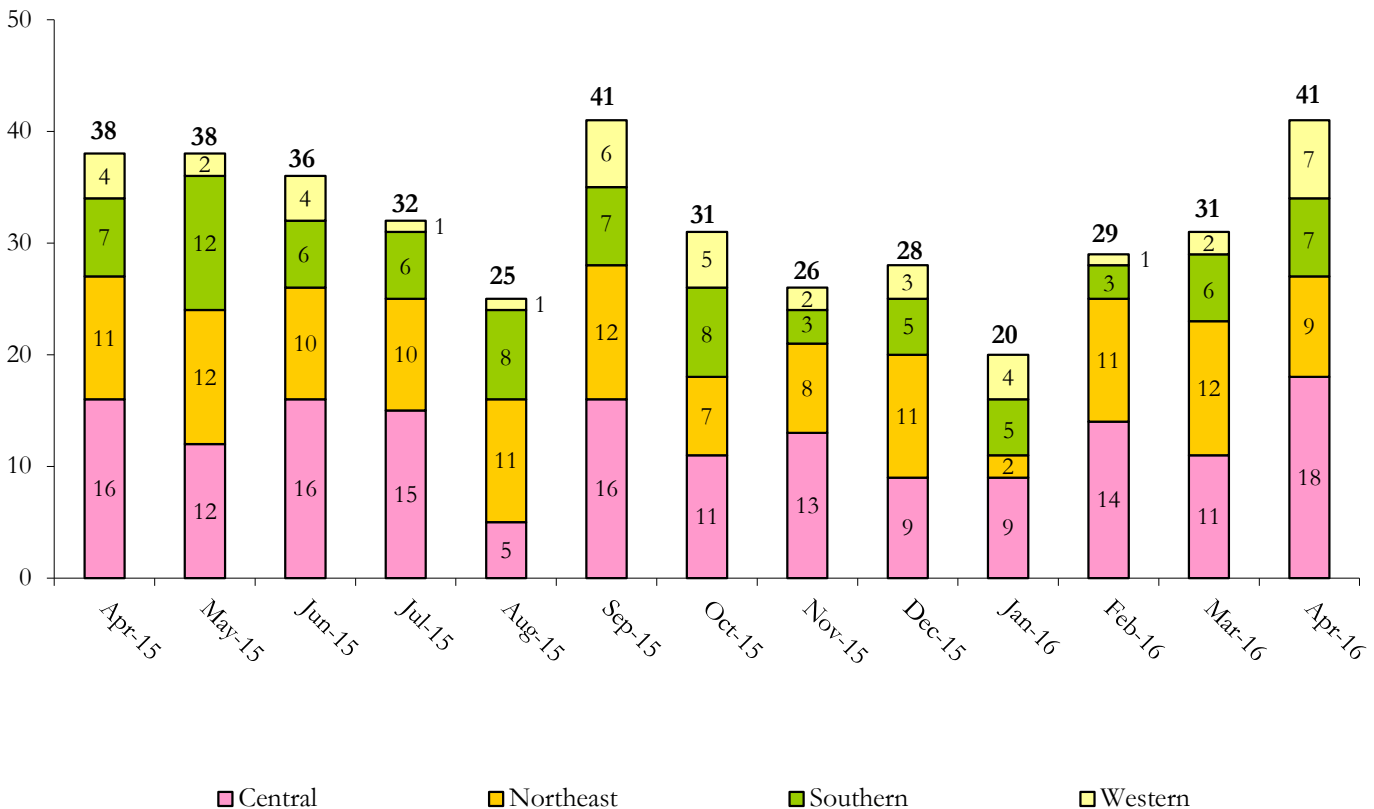
April 2016 DYC Population Report

IV. Commitment ADP and New Commitments

COMMITMENT ADP				
Region	Monthly		YTD	
	April	% Change	April	% Change from Prior FY
Central Region	289.6	-0.5%	301.1	-4.1%
Northeast Region	197.4	-0.6%	192.6	-3.9%
Southern Region	127.7	-2.4%	143.6	-8.0%
Western Region	55.3	-1.9%	61.6	-12.1%
Commitment ADP	670.1	-1.0%	699.0	-5.6%

NEW COMMITMENTS					
	FY 15-16		FY 14-15		% Change from last YTD
	April	YTD	April	YTD	
Central Region	18	124	16	129	-3.9%
Northeast Region	9	97	11	115	-15.7%
Southern Region	7	59	7	57	3.5%
Western Region	7	34	4	31	9.7%
TOTAL	41	314	38	332	-5.4%

Monthly New Commitments



April 2016 DYC Population Report

V. Parole Services

PAROLE ADP				
Region	Monthly	YTD		% Change from prev YTD
		FY 15-16	FY 14-15	
Central Region	104.3	102.9	100.4	2.5%
Northeast Region	69.9	71.0	75.0	-5.3%
Southern Region	52.0	48.2	41.6	15.8%
Western Region	23.4	23.4	27.6	-15.1%
Total	249.5	245.6	244.7	0.4%

Region	Parole Intakes		Parole Discharges		
	Monthly	YTD	Monthly	YTD	LOS
Central Region	9	133	20	140	7.2
Northeast Region	10	101	7	97	6.7
Southern Region	8	71	4	83	7.4
Western Region	4	34	1	40	6.4
Total	31	339	32	360	7.0

