

# March FY 2015-2016 MONTHLY POPULATION REPORT

---

Prepared by the Division of Youth Corrections (DYC)  
Research and Evaluation Unit  
April 27th, 2016



**COLORADO**

**Office of Children,  
Youth & Families**

Division of Youth Corrections

# March 2016 DYC Population Report

I.	Summary Population Data	1
II.	Detention ADP by Facility	2
III.	Commitment Services	
	A. State and Contract ADP by Facility	3
	B. Community/Other Residential ADP by Facility	4
IV.	Commitment ADP and New Commitments by Region	5
V.	Parole Services	6



# March 2016 DYC Population Report

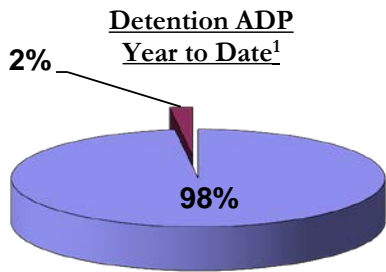
## I. Summary Population Data

DETAINED YOUTH				
	March 2016		YTD	
	ADP	% change	ADP	LOS
State-Operated	288.6	11.6%	266.9	15.4 days
Contracted Staff Secure	6.2	6.9%	5.4	14.4 days
<b>Total Detained</b>	<b>294.8</b>	<b>11.5%</b>	<b>272.3</b>	<b>15.4 days</b>

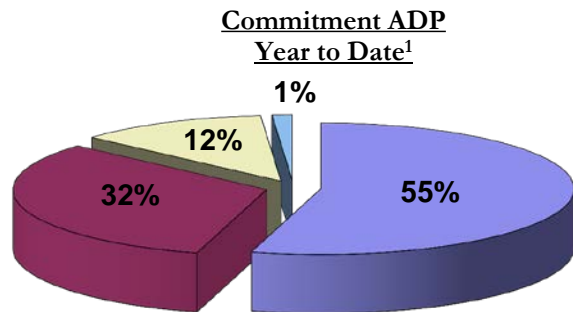
COMMITTED YOUTH				
	March 2016		YTD	
	ADP	% change	ADP	LOS
Secure	391.2	3.1%	381.8	10.1 months
Staff Supervised	205.2	-0.3%	225.7	10.9 months
Community Residential	71.8	-12.4%	85.0	6.4 months
Other Residential	8.6	18.5%	9.0	2.8 months
<b>Total Committed Residential</b>	<b>676.8</b>	<b>0.4%</b>	<b>701.4</b>	<b>20.0 months</b>
<i>Committed Residential w/o Boulder</i>	<i>673.6</i>	<i>0.3%</i>	<i>698.1</i>	-

PAROLE YOUTH				
	March 2016		YTD	
	ADP	% change	ADP	LOS
Parole	245.1	-0.3%	244.0	7.0 months

TOTAL STATEWIDE ADP				
	March 2016		YTD	
	ADP	% change	ADP	LOS
DETENTION	294.8	11.5%	272.3	15.4 days
COMMITMENT	676.8	0.4%	701.4	20.0 months
PAROLE	245.1	-0.3%	244.0	7.0 months
<b>STATE TOTAL</b>	<b>1,216.8</b>	<b>2.7%</b>	<b>1,217.7</b>	<b>N/A</b>



■ State-Operated   ■ Contracted Staff Secure



■ Secure   ■ Staff Supervised   ■ Community Residential   ■ Other Residential

<sup>1</sup> Due to rounding, totals may not add to 100%.

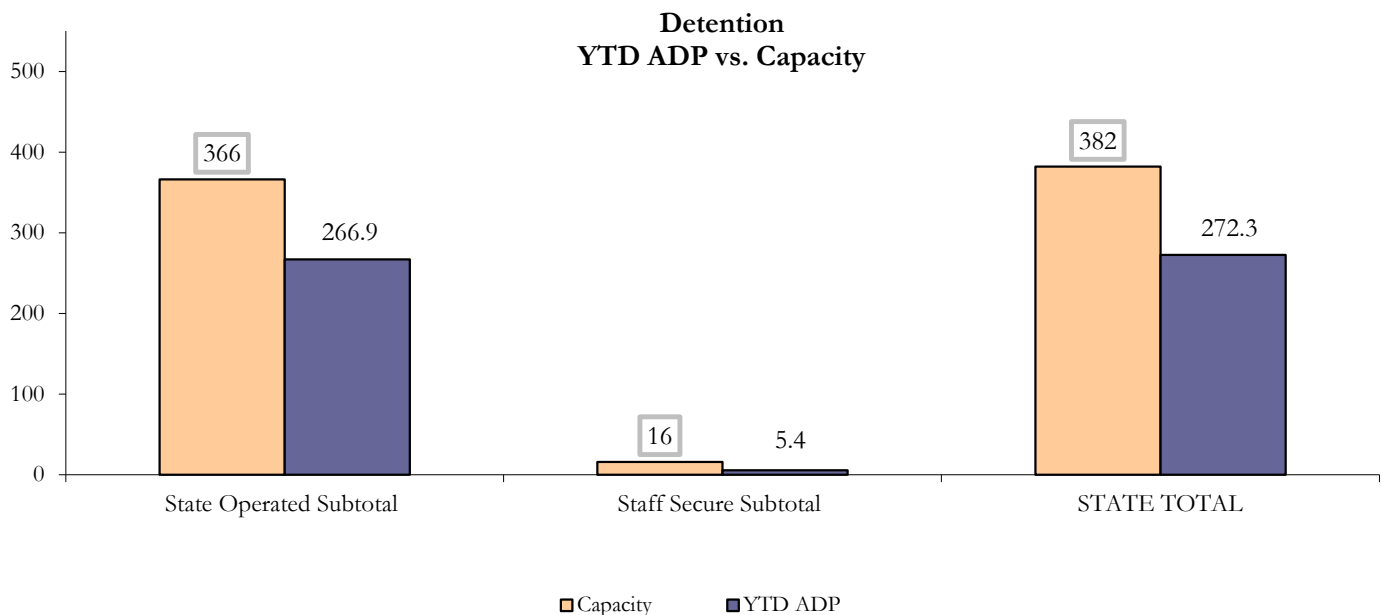
# March 2016 DYC Population Report

## II. Detention ADP by Facility

State Operated Detention							
Facility	Operating Capacity	Average Daily Population			New Admissions		LOS (days)
		Monthly	YTD	YTD % of Cap	Monthly	YTD	YTD
Adams	30	24.2	24.9	82.9%	53	398	16.5
Gilliam	64	55.1	54.0	84.3%	93	829	16.9
Grand Mesa	27	20.1	19.5	72.2%	29	274	16.8
Marvin Foote	61	48.8	40.1	65.8%	80	765	14.0
Mount View	41	26.5	26.1	63.5%	80	516	15.5
Platte Valley	64	48.3	42.8	66.9%	136	951	13.5
Pueblo	28	17.0	18.0	64.4%	38	429	11.7
Spring Creek	51	48.6	41.6	81.5%	71	579	19.5
<b>State Subtotal</b>	<b>366</b>	<b>288.6</b>	<b>266.9</b>	<b>72.9%</b>	<b>580</b>	<b>4,741</b>	<b>15.4</b>

Staff Secure Detention							
Facility	Operating Capacity	Average Daily Population			New Admissions		LOS (days)
		Monthly	YTD	YTD % of Cap	Monthly	YTD	YTD
Brown Center	3	1.0	1.1	38.1%	1	15	21.9
Robert DeNier	9	3.3	2.3	25.6%	5	44	13.5
Youthtrack San Luis Valley	4	1.9	2.0	48.8%	4	43	12.4
<b>Staff Secure Subtotal</b>	<b>16</b>	<b>6.2</b>	<b>5.4</b>	<b>33.8%</b>	<b>10</b>	<b>102</b>	<b>14.4</b>

STATEWIDE TOTAL							
	Operating Capacity	Average Daily Population			New Admissions		LOS (days)
		Monthly	YTD	YTD % of Cap	Monthly	YTD	YTD
<b>Total Detention</b>	<b>382</b>	<b>294.8</b>	<b>272.3</b>	<b>71.3%</b>	<b>590</b>	<b>4,843</b>	<b>15.4</b>



# March 2016 DYC Population Report

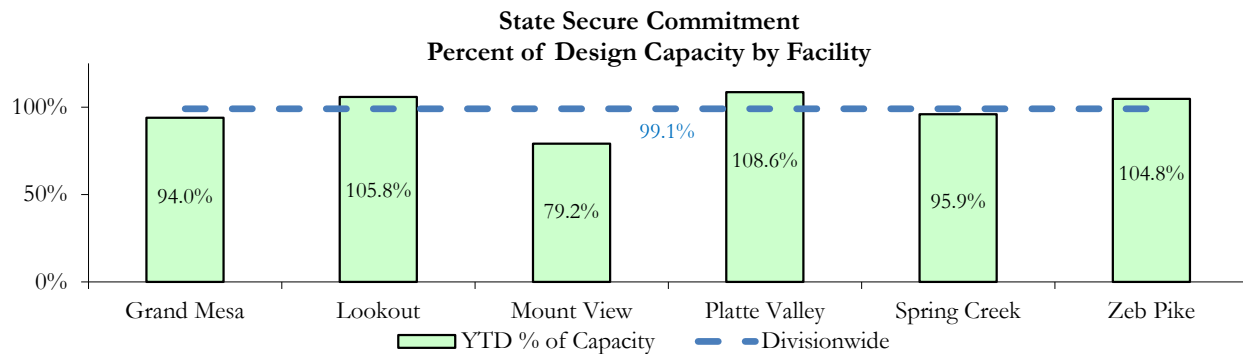
## III. Commitment Services

### A. State and Contract ADP by Facility

STATE SECURE					
Facility		ADP		Capacity	
		State Secure		Design	
		Monthly	YTD	Capacity	% of YTD
	<i>Adams</i> <sup>1</sup>	0.2	0.1	-	-
	<i>Gilliam</i> <sup>1</sup>	0.2	0.3	-	-
	Grand Mesa	35.2	37.6	40	94.0%
	Lookout	137.7	137.6	130	105.8%
	<i>Marvin Foote</i> <sup>1</sup>	0.3	0.7	-	-
	Mount View	52.2	50.7	64	79.2%
	Platte Valley	44.5	42.3	39	108.6%
	<i>Pueblo</i> <sup>1</sup>	0.2	0.3	-	-
	Spring Creek	29.0	27.8	29	95.9%
	Zeb Pike	38.5	37.7	36	104.8%
	<b>Assessment Total</b>	<b>30.7</b>	<b>27.4</b>	-	
	<b>Secure Total</b>	<b>307.3</b>	<b>307.7</b>	-	
	<b>STATE SECURE TOTAL</b>	<b>338.0</b>	<b>335.1</b>	<b>338</b>	<b>99.1%</b>

<sup>1</sup> Detention only facilities with commitment ADP due to committed youth being held in detention prior to transfer.

CONTRACT: PRIVATE SECURE + STAFF SUPERVISED		
Facility/Program <sup>2</sup>	ADP	
	Monthly	YTD
(Private Secure) Betty K. Marler Center	40.5	34.2
(Private Secure) Robert DeNier	12.8	12.4
Alternative Homes For Youth - Greeley	13.2	14.5
Devereux Cleo Wallace	0.0	1.5
Gateway Residential Program - Delta	3.0	3.0
Hilltop (Residential Youth Services)	6.5	4.6
Jefferson Hills - Aurora	41.4	49.1
Ridge View	121.9	136.2
Robert Brown Center	3.0	1.0
Southern Peaks	2.9	3.8
Third Way Center - Lowry	13.2	11.9
<i>Private Secure &amp; Staff Supervised Subtotal</i>	<b>258.4</b>	<b>272.3</b>



<sup>2</sup> Programs with both Secure and Community placements are aggregated into one category until further TRAILS builds can allow for programs to register as multiple types.

# March 2016 DYC Population Report

## III. Commitment Services Continued

### B. Community/Other Residential ADP by Facility<sup>1</sup>

<b>COMMUNITY RESIDENTIAL</b>		
	<i>Monthly</i>	<i>YTD</i>
Attention Homes, Chase House	0.0	0.03
Community Corrections: Comcor	0.0	0.05
Dale House Project	8.5	9.9
Denver Area Youth Services (DAYS)	2.8	1.9
Gateway Residential Program - Grand Junction	0.9	0.5
Griffith Centers for Children, Inc.	5.9	7.0
Job Corps	1.0	3.0
Kids Crossing	3.0	3.7
Maple Star	0.0	0.5
Mesa County Community Corrections	1.5	1.1
Mt Evans Qualifying House	5.3	7.9
Reflections for Youth, Inc.-Grismore	0.7	0.1
Savio House	0.5	1.4
Synergy Administration	3.6	5.3
Third Way Center, Bannock	2.4	3.4
Third Way Center, Pontiac	8.1	6.8
Third Way Center, York	5.7	6.3
Third Way Center, Lincoln	6.6	6.5
Turning Point Center, Prospect	3.0	3.3
Turning Point, Mathews St.	7.9	8.2
Whimspire Child Placement	0.1	1.4
Youthtrack, San Luis Valley	0.0	0.6
Youthtrack, Work and Learn	4.3	6.1
<i>Community Subtotal</i>	<i>71.8</i>	<i>85.0</i>
<b><i>Private Secure + Staff Supervised + Community Subtotal</i></b>	<b><i>330.3</i></b>	<b><i>357.3</i></b>
 <b>OTHER RESIDENTIAL</b>		
	<i>Monthly</i>	<i>YTD</i>
CMHI-Pueblo	0.4	0.06
Hospital	0.0	0.09
Job Corps Parole Program (Federally funded)	3.3	2.9
Other Mental Health Facility	0.0	0.6
Residential Drug/Alcohol Program	1.0	0.14
Residential Mental Health Program	3.0	2.1
Residential Work Program	0.0	0.02
Shelter Care (short term)	0.2	0.3
<i>Other Residential Subtotal<sup>2</sup></i>	<i>8.6</i>	<i>9.0</i>
<b>RESIDENTIAL TOTAL</b>	<b>676.8</b>	<b>701.4</b>

<sup>1</sup> Programs with both Secure and Community placements are aggregated into one category until further TRAILS builds can allow for programs to register as multiple types.

<sup>2</sup> Due to relatively few youth referred to these types of placements, the Other Residential Subtotals may not be the sum of individual placements; this is typically the result of rounding errors and the method by which ADP is calculated.

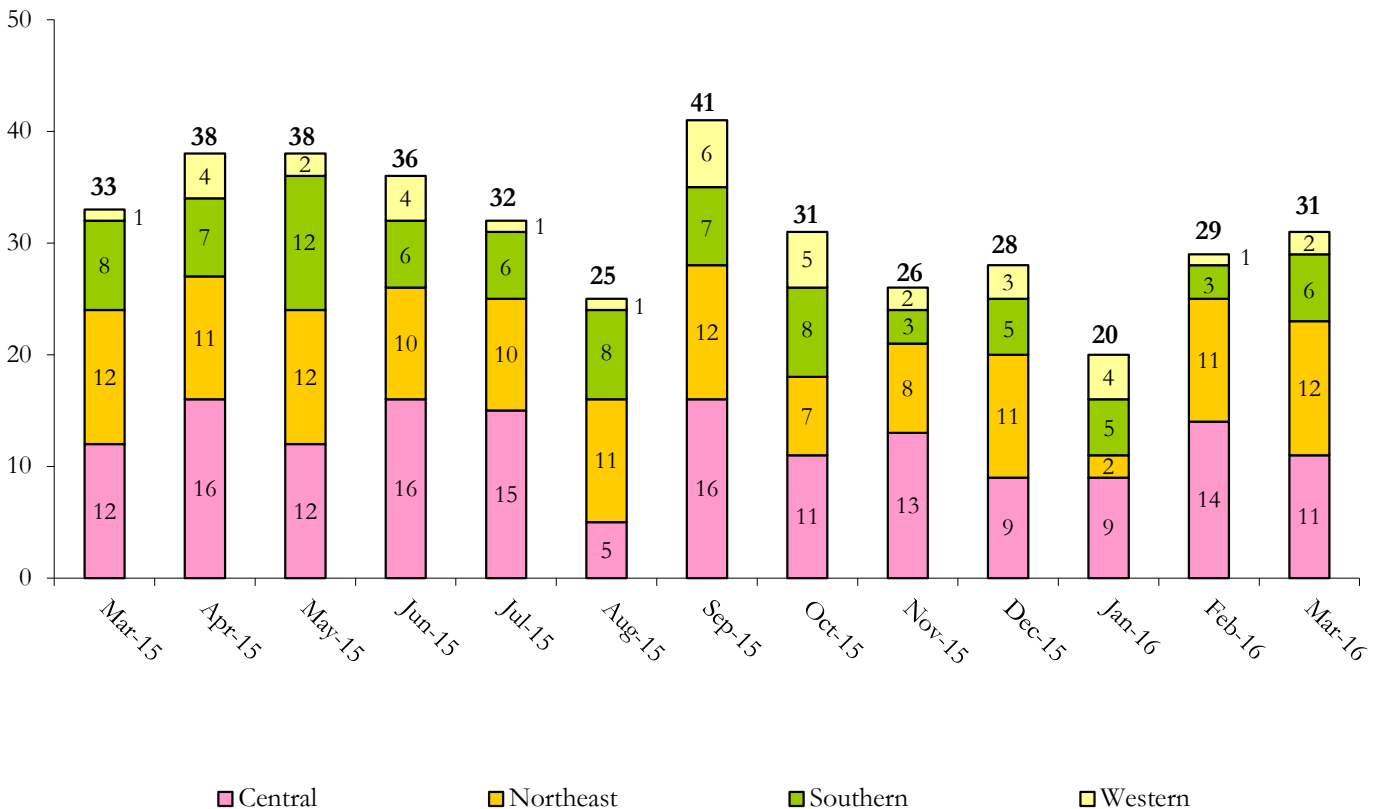
# March 2016 DYC Population Report

## IV. Commitment ADP and New Commitments

COMMITMENT ADP				
Region	Monthly		YTD	
	March	% Change	March	% Change from Prior FY
Central Region	291.1	1.0%	300.6	-4.7%
Northeast Region	198.5	3.8%	192.2	-4.3%
Southern Region	130.8	-3.1%	146.3	-6.5%
Western Region	56.4	-5.9%	62.3	-11.9%
<b>Commitment ADP</b>	<b>676.8</b>	<b>0.4%</b>	<b>701.4</b>	<b>-5.6%</b>

NEW COMMITMENTS					
	FY 15-16		FY 14-15		% Change from last YTD
	March	YTD	March	YTD	
Central Region	11	106	12	112	-5.4%
Northeast Region	12	88	12	104	-15.4%
Southern Region	6	51	8	50	2.0%
Western Region	2	27	1	27	0.0%
<b>TOTAL</b>	<b>31</b>	<b>272</b>	<b>33</b>	<b>293</b>	<b>-7.2%</b>

### Monthly New Commitments



# March 2016 DYC Population Report

## V. Parole Services

### PAROLE ADP

Region	Monthly	YTD		% Change from prev YTD
		FY 15-16	FY 14-15	
Central Region	106.9	102.3	102.0	0.3%
Northeast Region	68.8	70.5	74.1	-4.9%
Southern Region	49.4	47.8	40.5	17.8%
Western Region	20.1	23.5	28.2	-17.0%
<b>Total</b>	<b>245.1</b>	<b>244.0</b>	<b>244.9</b>	<b>-0.4%</b>

Region	Parole Intakes		Parole Discharges		
	Monthly	YTD	Monthly	YTD	LOS
Central Region	16	124	14	120	7.3
Northeast Region	5	89	7	87	6.6
Southern Region	12	63	3	79	7.4
Western Region	4	30	2	39	6.4
<b>Total</b>	<b>37</b>	<b>306</b>	<b>26</b>	<b>325</b>	<b>7.0</b>

