

February FY 2015-2016 MONTHLY POPULATION REPORT

Prepared by the Division of Youth Corrections (DYC)

Research and Evaluation Unit

March 23rd, 2016



COLORADO

**Office of Children,
Youth & Families**

Division of Youth Corrections

February 2016 DYC Population Report

I. Summary Population Data	1
II. Detention ADP by Facility	2
III. Commitment Services	
A. State and Contract ADP by Facility	3
B. Community/Other Residential ADP by Facility	4
IV. Commitment ADP and New Commitments by Region	5
V. Parole Services	6



February 2016 DYC Population Report

I. Summary Population Data

DETAINED YOUTH

	February 2016		YTD	
	ADP	% change	ADP	LOS
State-Operated	258.5	1.2%	264.3	15.5 days
Contracted Staff Secure	5.8	47.7%	5.3	13.9 days
Total Detained	264.4	1.9%	269.6	15.4 days

COMMITTED YOUTH

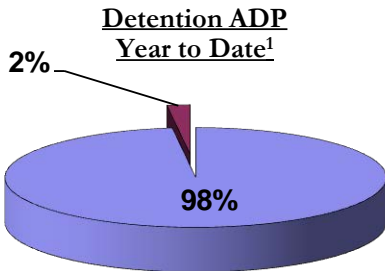
	February 2016		YTD	
	ADP	% change	ADP	LOS
Secure	379.5	1.1%	380.5	9.9 months
Staff Supervised	205.8	-2.3%	228.3	10.8 months
Community Residential	82.0	-4.2%	86.6	6.2 months
Other Residential	7.2	64.2%	8.9	2.9 months
Total Committed Residential	674.4	-0.2%	704.4	19.7 months
<i>Committed Residential w/o Boulder</i>	<i>671.7</i>	<i>-0.1%</i>	<i>701.0</i>	<i>-</i>

PAROLE YOUTH

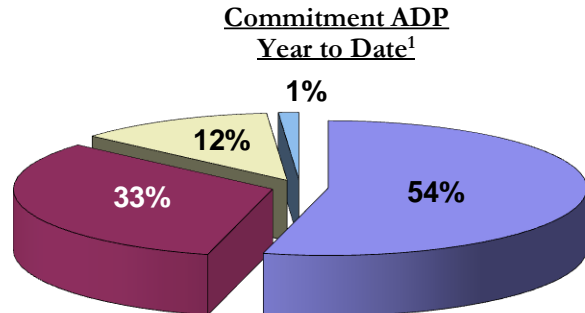
	February 2016		YTD	
	ADP	% change	ADP	LOS
Parole	245.9	0.2%	243.8	7.0 months

TOTAL STATEWIDE ADP

	February 2016		YTD	
	ADP	% change	ADP	LOS
DETENTION	264.4	1.9%	269.6	15.4 days
COMMITMENT	674.4	-0.2%	704.4	19.7 months
PAROLE	245.9	0.2%	243.8	7.0 months
STATE TOTAL	1,184.7	0.3%	1,217.8	N/A



■ State-Operated ■ Contracted Staff Secure



■ Secure ■ Staff Supervised ■ Community Residential ■ Other Residential

¹ Due to rounding, totals may not add to 100%.

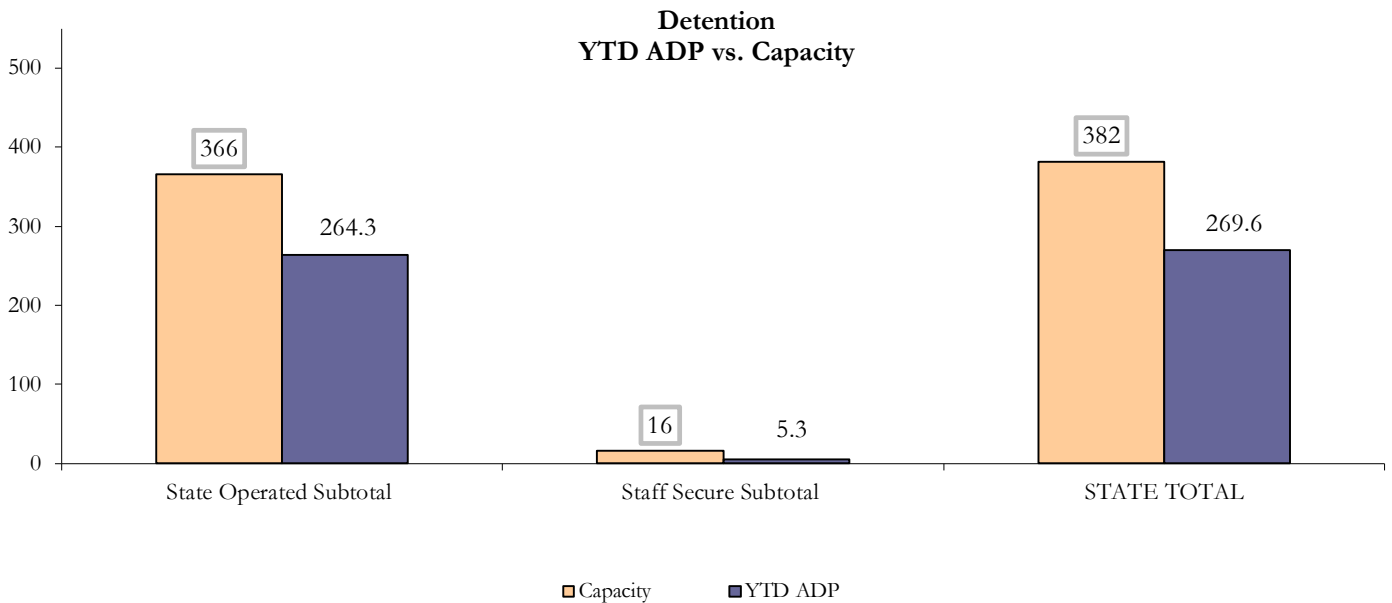
February 2016 DYC Population Report

II. Detention ADP by Facility

State Operated Detention							
Facility	Operating Capacity	Average Daily Population			New Admissions		LOS (days)
		Monthly	YTD	YTD % of Cap	Monthly	YTD	YTD
Adams	30	17.2	25.0	83.2%	34	345	17.1
Gilliam	64	53.8	53.8	84.1%	91	736	16.6
Grand Mesa	27	20.7	19.4	71.9%	26	245	15.4
Marvin Foote	61	38.8	39.0	64.0%	79	685	14.0
Mount View	41	23.8	26.1	63.7%	56	437	16.6
Platte Valley	64	43.4	42.1	65.8%	96	815	13.8
Pueblo	28	19.5	18.2	64.9%	42	391	11.4
Spring Creek	51	41.3	40.7	79.8%	65	508	19.7
State Subtotal	366	258.5	264.3	72.2%	489	4,162	15.5

Staff Secure Detention							
Facility	Operating Capacity	Average Daily Population			New Admissions		LOS (days)
		Monthly	YTD	YTD % of Cap	Monthly	YTD	YTD
Brown Center	3	0.5	1.2	38.8%	4	14	23.7
Robert DeNier	9	2.4	2.2	24.2%	6	39	12.6
Youthtrack San Luis Valley	4	2.9	2.0	48.8%	6	39	11.7
Staff Secure Subtotal	16	5.8	5.3	33.1%	16	92	13.9

STATEWIDE TOTAL							
	Operating Capacity	Average Daily Population			New Admissions		LOS (days)
		Monthly	YTD	YTD % of Cap	Monthly	YTD	YTD
Total Detention	382	264.4	269.6	70.6%	505	4,254	15.4



February 2016 DYC Population Report

III. Commitment Services

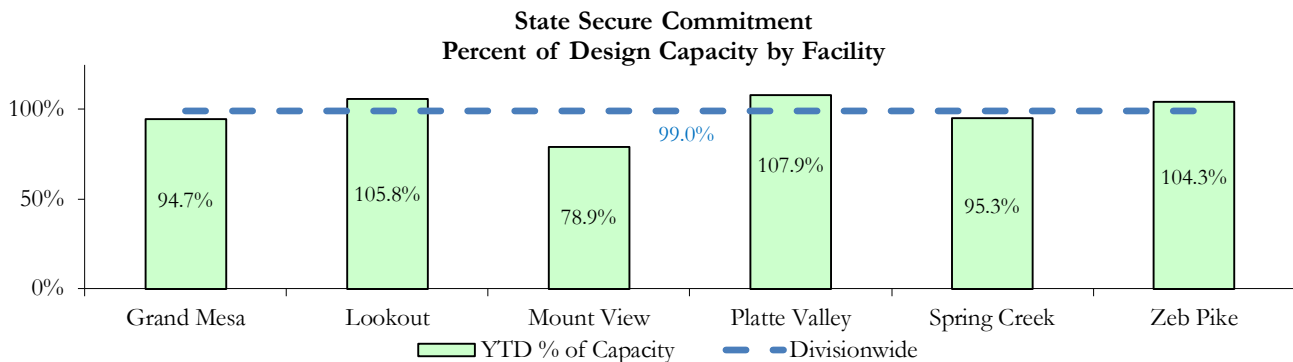
A. State and Contract ADP by Facility

STATE SECURE				
Facility	ADP		Capacity	
	State Secure		Design	
	Monthly	YTD	Capacity	% of YTD
<i>Adams¹</i>	0.2	0.1	-	-
<i>Gilliam¹</i>	0.0	0.3	-	-
Grand Mesa	39.1	37.9	40	94.7%
Lookout	137.8	137.5	130	105.8%
<i>Marvin Foote¹</i>	1.5	0.8	-	-
Mount View	38.1	50.5	64	78.9%
Platte Valley	44.3	42.1	39	107.9%
<i>Pueblo¹</i>	0.0	0.3	-	-
Spring Creek	27.6	27.6	29	95.3%
Zeb Pike	37.5	37.6	36	104.3%
Assessment Total	22.9	27.0	-	
Secure Total	303.1	307.7	-	
STATE SECURE TOTAL	326.0	334.7	338	99.0%

¹ Detention only facilities with commitment ADP due to committed youth being held in detention prior to transfer.

CONTRACT: PRIVATE SECURE + STAFF SUPERVISED

Facility/Program ²	ADP	
	Monthly	YTD
(Private Secure) Betty K. Marler Center	39.0	33.4
(Private Secure) Robert DeNier	14.5	12.4
Alternative Homes For Youth - Greeley	13.2	14.6
Devereux Cleo Wallace	0.0	1.7
Gateway Residential Program - Delta	3.0	3.0
Hilltop (Residential Youth Services)	6.0	4.4
Jefferson Hills - Aurora	42.3	50.1
Ridge View	124.4	138.0
Robert Brown Center	2.3	0.7
Southern Peaks	3.0	4.0
Third Way Center - Lowry	11.6	11.8
<i>Private Secure & Staff Supervised Subtotal</i>	259.2	274.1



² Programs with both Secure and Community placements are aggregated into one category until further TRAILS builds can allow for programs to register as multiple types.

February 2016 DYC Population Report

III. Commitment Services Continued

B. Community/Other Residential ADP by Facility¹

COMMUNITY RESIDENTIAL		
	<i>Monthly</i>	<i>YTD</i>
Attention Homes, Chase House	0.0	0.04
Community Corrections: Comcor	0.0	0.1
Dale House Project	9.7	10.1
Denver Area Youth Services (DAYS)	2.9	1.8
Gateway Residential Program - Grand Junction	1.0	0.4
Griffith Centers for Children, Inc.	6.6	7.1
Job Corps	2.0	3.3
Kids Crossing	3.7	3.7
Maple Star	0.0	0.6
Mesa County Community Corrections	1.1	1.0
Mt Evans Qualifying House	6.0	8.2
Savio House	1.0	1.6
Synergy Administration	5.2	5.6
Third Way Center, Bannock	2.8	3.5
Third Way Center, Pontiac	6.9	6.6
Third Way Center, York	6.8	6.4
Third Way Center, Lincoln	6.8	6.5
Turning Point Center, Prospect	3.0	3.3
Turning Point, Mathews St.	9.2	8.2
Whimspire Child Placement	0.0	1.5
Youthtrack, San Luis Valley	0.0	0.6
Youthtrack, Work and Learn	7.3	6.3
<i>Community Subtotal</i>	<i>82.0</i>	<i>86.6</i>
<i>Private Secure + Staff Supervised + Community Subtotal</i>	<i>341.2</i>	<i>360.7</i>
OTHER RESIDENTIAL		
	<i>Monthly</i>	<i>YTD</i>
CMHI-Pueblo	0.2	0.02
Hospital	0.6	0.10
Job Corps Parole Program (Federally funded)	2.7	2.9
Other Mental Health Facility	0.0	0.7
Residential Drug/Alcohol Program	0.0	0.04
Residential Mental Health Program	2.5	2.0
Residential Work Program	0.0	0.02
Shelter Care (short term)	0.4	0.3
<i>Other Residential Subtotal²</i>	<i>7.2</i>	<i>8.9</i>
RESIDENTIAL TOTAL	674.4	704.4

¹ Programs with both Secure and Community placements are aggregated into one category until further TRAILS builds can allow for programs to register as multiple types.

² Due to relatively few youth referred to these types of placements, the Other Residential Subtotals may not be the sum of individual placements; this is typically the result of rounding errors and the method by which ADP is calculated.

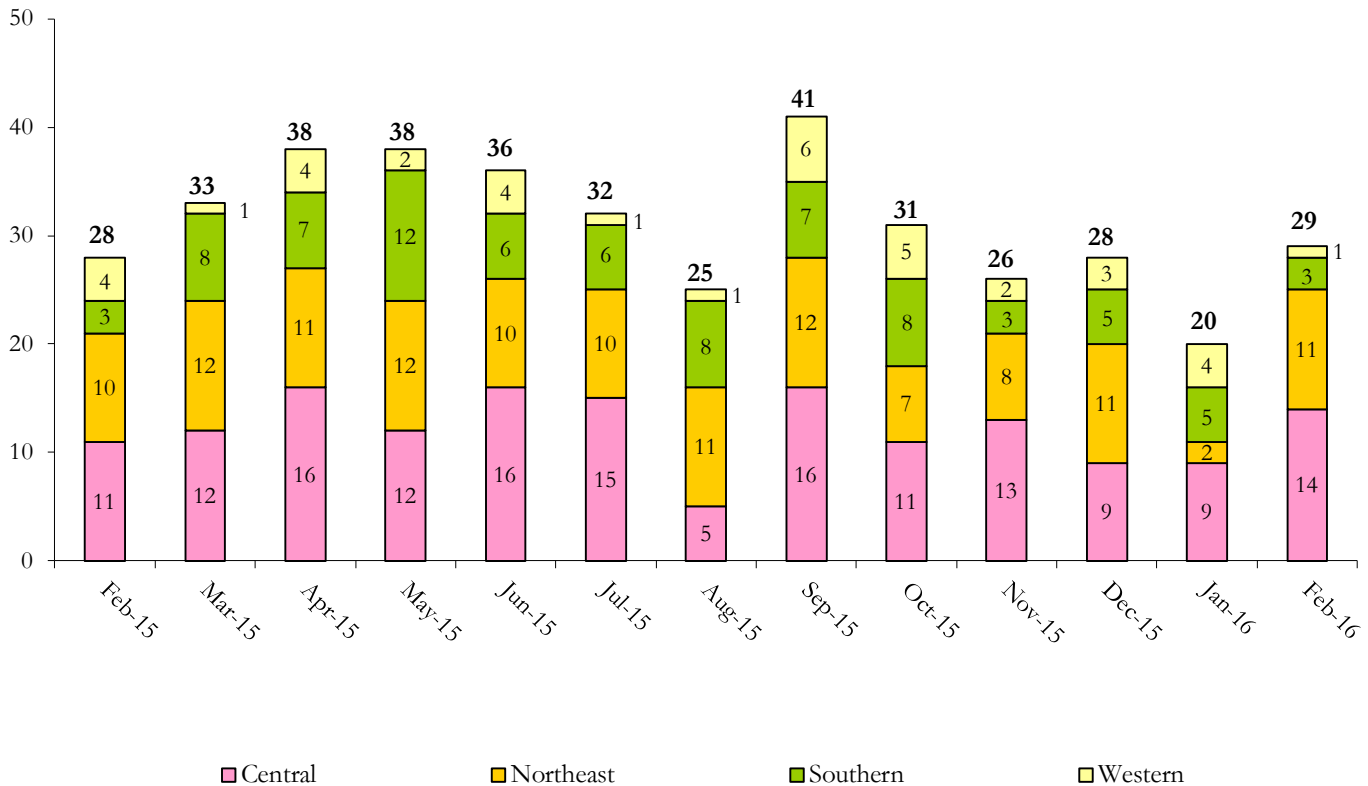
February 2016 DYC Population Report

IV. Commitment ADP and New Commitments

COMMITMENT ADP				
Region	Monthly		YTD	
	February	% Change	February	% Change from Prior FY
Central Region	288.3	0.2%	301.8	-4.6%
Northeast Region	191.3	3.4%	191.4	-4.2%
Southern Region	135.0	-3.3%	148.2	-7.6%
Western Region	59.9	-6.2%	63.0	-11.6%
Commitment ADP	674.4	-0.2%	704.4	-5.8%

NEW COMMITMENTS					
	FY 15-16		FY 14-15		% Change from last YTD
	February	YTD	February	YTD	
Central Region	14	93	11	100	-7.0%
Northeast Region	11	76	10	92	-17.4%
Southern Region	3	45	3	41	9.8%
Western Region	1	25	4	26	-3.8%
TOTAL	29	239	28	259	-7.7%

Monthly New Commitments



February 2016 DYC Population Report

V. Parole Services

PAROLE ADP

Region	Monthly	YTD		% Change from prev YTD
		FY 15-16	FY 14-15	
Central Region	106.5	102.1	103.1	-0.9%
Northeast Region	72.8	70.4	72.9	-3.4%
Southern Region	47.7	47.6	40.1	18.8%
Western Region	18.8	23.7	28.7	-17.4%
Total	245.9	243.8	244.7	-0.4%

Region	Parole Intakes		Parole Discharges		LOS
	Monthly	YTD	Monthly	YTD	
Central Region	11	108	15	105	7.0
Northeast Region	5	84	11	79	6.7
Southern Region	4	51	7	76	7.6
Western Region	3	26	6	37	6.5
Total	23	269	39	297	7.0

Monthly Parole ADP

