

January FY 2015-2016 MONTHLY POPULATION REPORT

Prepared by the Division of Youth Corrections (DYC)

Research and Evaluation Unit

February 18th, 2016



COLORADO

**Office of Children,
Youth & Families**

Division of Youth Corrections

January 2016 DYC Population Report

| | |
|---|----------|
| I. Summary Population Data | 1 |
| II. Detention ADP by Facility | 2 |
| III. Commitment Services | |
| A. State and Contract ADP by Facility | 3 |
| B. Community/Other Residential ADP by Facility | 4 |
| IV. Commitment ADP and New Commitments by Region | 5 |
| V. Parole Services | 6 |



January 2016 DYC Population Report

I. Summary Population Data

DETAINED YOUTH

| | January 2016 | | YTD | |
|-------------------------|--------------|-------------|--------------|------------------|
| | ADP | % change | ADP | LOS |
| State-Operated | 255.4 | 2.5% | 266.8 | 15.5 days |
| Contracted Staff Secure | 3.9 | 9.1% | 5.2 | 14.6 days |
| Total Detained | 259.4 | 2.6% | 272.0 | 15.5 days |

COMMITTED YOUTH

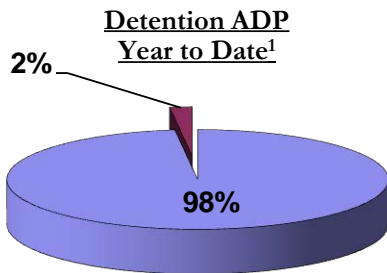
| | January 2016 | | YTD | |
|--|--------------|--------------|--------------|--------------------|
| | ADP | % change | ADP | LOS |
| Secure | 375.4 | -1.6% | 380.6 | 9.7 months |
| Staff Supervised | 210.6 | -4.4% | 231.3 | 11.0 months |
| Community Residential | 85.6 | 2.4% | 87.4 | 6.3 months |
| Other Residential | 4.4 | -27.6% | 7.7 | 2.5 months |
| Total Committed Residential | 676.1 | -2.2% | 706.9 | 19.9 months |
| <i>Committed Residential w/o Boulder</i> | <i>672.4</i> | <i>-2.2%</i> | <i>703.5</i> | <i>-</i> |

PAROLE YOUTH

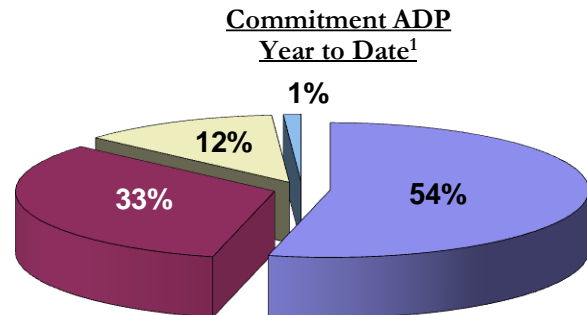
| | January 2016 | | YTD | |
|--------|--------------|----------|-------|------------|
| | ADP | % change | ADP | LOS |
| Parole | 245.5 | 5.3% | 242.8 | 7.0 months |

TOTAL STATEWIDE ADP

| | January 2016 | | YTD | |
|--------------------|----------------|--------------|----------------|--------------------|
| | ADP | % change | ADP | LOS |
| DETENTION | 259.4 | 2.6% | 272.0 | 15.5 days |
| COMMITMENT | 676.1 | -2.2% | 706.9 | 19.9 months |
| PAROLE | 245.5 | 5.3% | 242.8 | 7.0 months |
| STATE TOTAL | 1,181.0 | 0.3% | 1,221.7 | N/A |



■ State-Operated ■ Contracted Staff Secure



■ Secure ■ Staff Supervised ■ Community Residential ■ Other Residential

¹ Due to rounding, totals may not add to 100%.

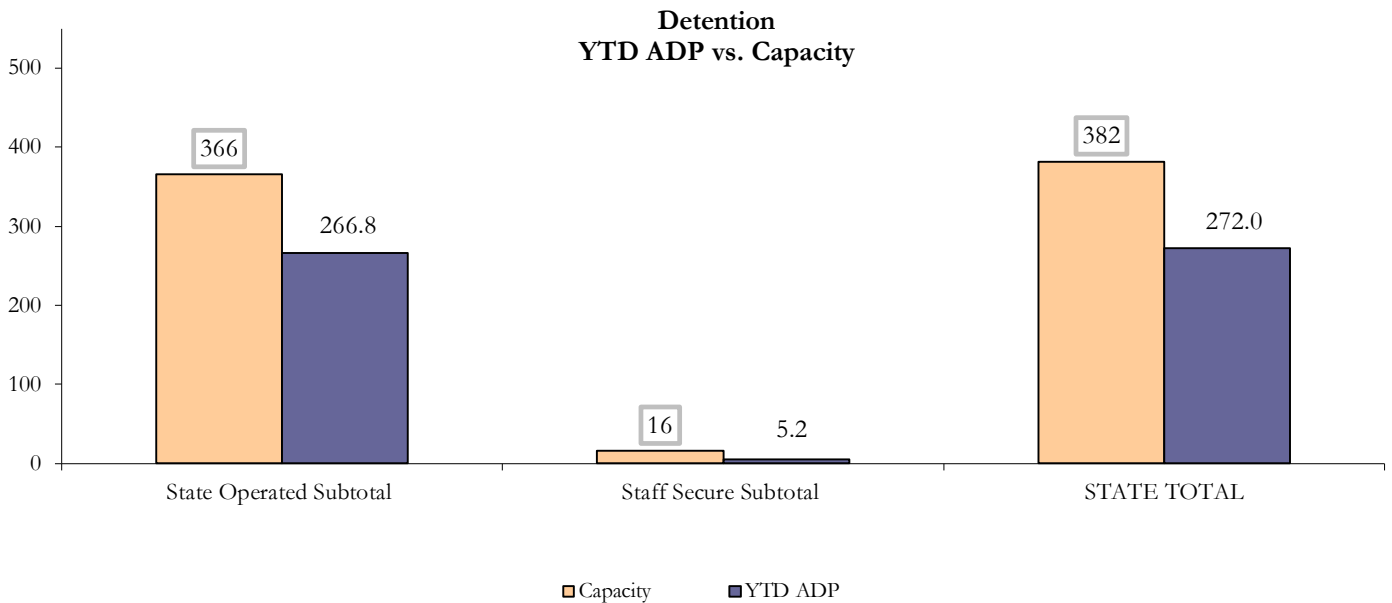
January 2016 DYC Population Report

II. Detention ADP by Facility

| State Operated Detention | | | | | | | |
|--------------------------|--------------------|--------------------------|--------------|--------------|----------------|--------------|-------------|
| Facility | Operating Capacity | Average Daily Population | | | New Admissions | | LOS (days) |
| | | Monthly | YTD | YTD % of Cap | Monthly | YTD | YTD |
| Adams | 30 | 26.2 | 26.0 | 86.7% | 42 | 311 | 16.3 |
| Gilliam | 64 | 54.9 | 53.8 | 84.1% | 79 | 645 | 16.7 |
| Grand Mesa | 27 | 18.3 | 19.3 | 71.3% | 30 | 219 | 16.1 |
| Marvin Foote | 61 | 39.1 | 40.2 | 66.0% | 90 | 609 | 14.2 |
| Mount View | 41 | 23.4 | 26.7 | 65.1% | 63 | 383 | 17.1 |
| Platte Valley | 64 | 36.2 | 42.2 | 65.9% | 76 | 720 | 13.9 |
| Pueblo | 28 | 17.3 | 18.0 | 64.2% | 46 | 349 | 11.0 |
| Spring Creek | 51 | 40.1 | 40.6 | 79.6% | 60 | 443 | 19.2 |
| State Subtotal | 366 | 255.4 | 266.8 | 72.9% | 486 | 3,679 | 15.5 |

| Staff Secure Detention | | | | | | | |
|------------------------------|--------------------|--------------------------|------------|--------------|----------------|-----------|-------------|
| Facility | Operating Capacity | Average Daily Population | | | New Admissions | | LOS (days) |
| | | Monthly | YTD | YTD % of Cap | Monthly | YTD | YTD |
| Brown Center | 3 | 0.2 | 1.3 | 41.8% | 0 | 10 | 27.3 |
| Robert DeNier | 9 | 0.9 | 2.1 | 23.9% | 3 | 33 | 14.1 |
| Youthtrack San Luis Valley | 4 | 2.8 | 1.8 | 45.6% | 5 | 33 | 10.4 |
| Staff Secure Subtotal | 16 | 3.9 | 5.2 | 32.7% | 8 | 76 | 14.6 |

| STATEWIDE TOTAL | | | | | | | |
|------------------------|--------------------|--------------------------|--------------|--------------|----------------|--------------|-------------|
| | Operating Capacity | Average Daily Population | | | New Admissions | | LOS (days) |
| | | Monthly | YTD | YTD % of Cap | Monthly | YTD | YTD |
| Total Detention | 382 | 259.4 | 272.0 | 71.2% | 494 | 3,755 | 15.5 |



January 2016 DYC Population Report

III. Commitment Services

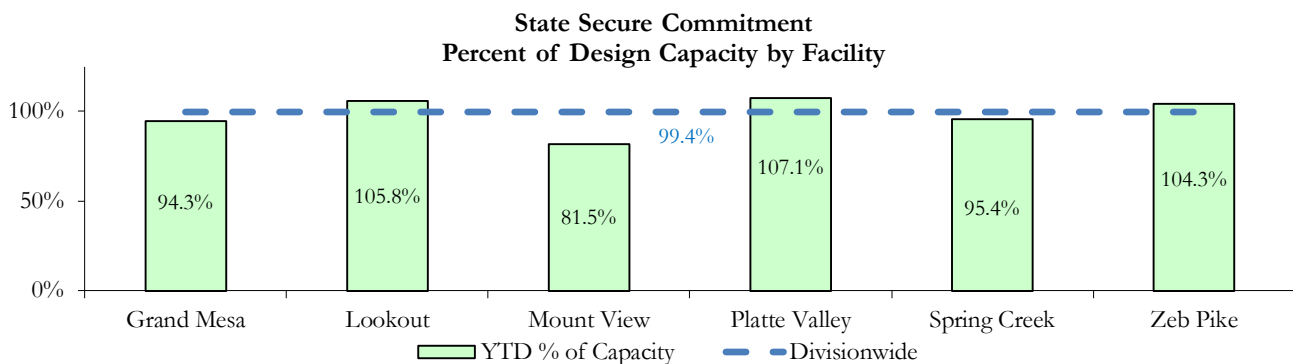
A. State and Contract ADP by Facility

| STATE SECURE | | | | |
|---------------------------------|--------------|--------------|------------|--------------|
| Facility | ADP | | Capacity | |
| | State Secure | | Design | |
| | Monthly | YTD | Capacity | % of YTD |
| <i>Adams¹</i> | 0.1 | 0.1 | - | - |
| <i>Gilliam¹</i> | 0.2 | 0.4 | - | - |
| Grand Mesa | 38.9 | 37.7 | 40 | 94.3% |
| Lookout | 137.8 | 137.5 | 130 | 105.8% |
| <i>Marvin Foote¹</i> | 0.8 | 0.7 | - | - |
| Mount View | 44.4 | 52.2 | 64 | 81.5% |
| Platte Valley | 38.4 | 41.8 | 39 | 107.1% |
| <i>Pueblo¹</i> | 0.0 | 0.3 | - | - |
| Spring Creek | 27.0 | 27.7 | 29 | 95.4% |
| Zeb Pike | 36.9 | 37.6 | 36 | 104.3% |
| Assessment Total | 20.9 | 27.5 | - | |
| Secure Total | 303.7 | 308.3 | - | |
| STATE SECURE TOTAL | 324.6 | 335.8 | 338 | 99.4% |

¹ Detention only facilities with commitment ADP due to committed youth being held in detention prior to transfer.

CONTRACT: PRIVATE SECURE + STAFF SUPERVISED

| Facility/Program ² | ADP | |
|---|--------------|--------------|
| | Monthly | YTD |
| (Private Secure) Betty K. Marler Center | 36.8 | 32.7 |
| (Private Secure) Robert DeNier | 14.0 | 12.1 |
| Alternative Homes For Youth - Greeley | 13.3 | 14.8 |
| Devereux Cleo Wallace | 0.0 | 2.0 |
| Gateway Residential Program - Delta | 3.0 | 3.1 |
| Hilltop (Residential Youth Services) | 6.0 | 4.1 |
| Jefferson Hills - Aurora | 46.8 | 51.1 |
| Ridge View | 125.1 | 139.8 |
| Robert Brown Center | 2.1 | 0.5 |
| Southern Peaks | 3.7 | 4.1 |
| Third Way Center - Lowry | 10.6 | 11.8 |
| <i>Private Secure & Staff Supervised Subtotal</i> | 261.5 | 276.1 |



² Programs with both Secure and Community placements are aggregated into one category until further TRAILS builds can allow for programs to register as multiple types.

January 2016 DYC Population Report

III. Commitment Services Continued

B. Community/Other Residential ADP by Facility¹

| COMMUNITY RESIDENTIAL | | |
|--|---------------------|---------------------|
| | <i>Monthly</i> | <i>YTD</i> |
| Attention Homes, Chase House | 0.0 | 0.04 |
| Community Corrections: Comcor | 0.0 | 0.1 |
| Dale House Project | 10.3 | 10.2 |
| Denver Area Youth Services (DAYS) | 2.5 | 1.7 |
| Gateway Residential Program - Grand Junction | 0.6 | 0.4 |
| Griffith Centers for Children, Inc. | 7.9 | 7.3 |
| Job Corps | 1.8 | 3.5 |
| Kids Crossing | 4.0 | 3.7 |
| Maple Star | 0.0 | 0.7 |
| Mesa County Community Corrections | 1.4 | 1.0 |
| Mt Evans Qualifying House | 5.9 | 8.5 |
| Savio House | 1.6 | 1.6 |
| Synergy Administration | 5.0 | 5.6 |
| Third Way Center, Bannock | 1.9 | 3.6 |
| Third Way Center, Pontiac | 6.3 | 6.5 |
| Third Way Center, York | 7.7 | 6.4 |
| Third Way Center, Lincoln | 7.7 | 6.5 |
| Turning Point Center, Prospect | 4.1 | 3.4 |
| Turning Point, Mathews St. | 9.3 | 8.1 |
| Whimspire Child Placement | 0.9 | 1.8 |
| Youthtrack, San Luis Valley | 0.0 | 0.7 |
| Youthtrack, Work and Learn | 6.6 | 6.2 |
| <i>Community Subtotal</i> | <i>85.6</i> | <i>87.4</i> |
| | | |
| <i>Private Secure + Staff Supervised + Community Subtotal</i> | <i>347.1</i> | <i>363.4</i> |
| OTHER RESIDENTIAL | | |
| | <i>Monthly</i> | <i>YTD</i> |
| Hospital | 0.0 | 0.03 |
| Job Corps Parole Program (Federally funded) | 2.9 | 2.9 |
| Other Mental Health Facility | 0.0 | 0.8 |
| Residential Drug/Alcohol Program | 0.1 | 0.03 |
| Residential Mental Health Program | 0.2 | 1.9 |
| Residential Work Program | 0.0 | 0.03 |
| Shelter Care (short term) | 0.0 | 0.3 |
| <i>Other Residential Subtotal²</i> | <i>4.4</i> | <i>7.7</i> |
| | | |
| RESIDENTIAL TOTAL | 676.1 | 706.9 |

¹ Programs with both Secure and Community placements are aggregated into one category until further TRAILS builds can allow for programs to register as multiple types.

² Due to relatively few youth referred to these types of placements, the Other Residential Subtotals may not be the sum of individual placements; this is typically the result of rounding errors and the method by which ADP is calculated.

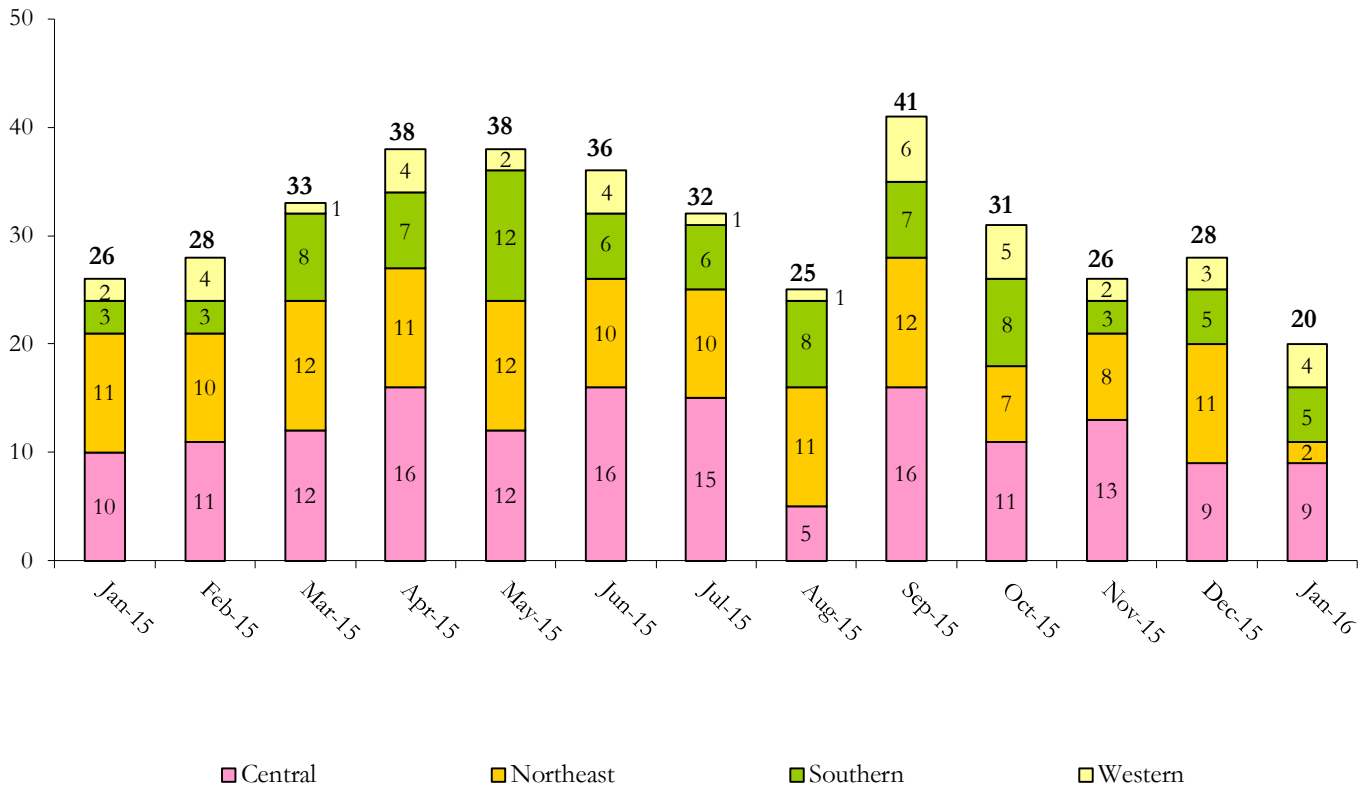
January 2016 DYC Population Report

IV. Commitment ADP and New Commitments

| COMMITMENT ADP | | | | |
|------------------|---------|----------|---------|------------------------|
| Region | Monthly | | YTD | |
| | January | % Change | January | % Change from Prior FY |
| Central Region | 287.6 | -1.8% | 301.3 | -5.3% |
| Northeast Region | 185.1 | -3.0% | 192.1 | -4.7% |
| Southern Region | 139.6 | -3.6% | 150.1 | -6.2% |
| Western Region | 63.8 | 1.5% | 63.4 | -11.9% |
| Commitment ADP | 676.1 | -2.2% | 706.9 | -6.0% |

| NEW COMMITMENTS | | | | | |
|------------------|----------|-----|----------|-----|------------------------|
| | FY 15-16 | | FY 14-15 | | % Change from last YTD |
| | January | YTD | January | YTD | |
| Central Region | 9 | 79 | 10 | 88 | -10.2% |
| Northeast Region | 2 | 65 | 11 | 82 | -20.7% |
| Southern Region | 5 | 42 | 3 | 38 | 10.5% |
| Western Region | 4 | 23 | 2 | 21 | 9.5% |
| TOTAL | 20 | 209 | 26 | 229 | -8.7% |

Monthly New Commitments



January 2016 DYC Population Report

V. Parole Services

PAROLE ADP

| Region | Monthly | YTD | | % Change from prev YTD |
|------------------|--------------|--------------|--------------|------------------------|
| | | FY 15-16 | FY 14-15 | |
| Central Region | 106.8 | 101.5 | 102.9 | -1.4% |
| Northeast Region | 74.9 | 69.3 | 72.1 | -3.9% |
| Southern Region | 44.2 | 47.6 | 38.4 | 23.8% |
| Western Region | 19.6 | 24.4 | 29.8 | -18.3% |
| Total | 245.5 | 242.8 | 243.3 | -0.2% |

| Region | Parole Intakes | | Parole Discharges | | LOS |
|------------------|----------------|------------|-------------------|------------|------------|
| | Monthly | YTD | Monthly | YTD | |
| Central Region | 16 | 97 | 11 | 89 | 7.0 |
| Northeast Region | 9 | 77 | 6 | 67 | 6.3 |
| Southern Region | 10 | 47 | 9 | 69 | 7.7 |
| Western Region | 2 | 20 | 2 | 30 | 6.7 |
| Total | 37 | 241 | 28 | 255 | 7.0 |

