

December FY 2015-2016 MONTHLY POPULATION REPORT

Prepared by the Division of Youth Corrections (DYC)

Research and Evaluation Unit

January 21, 2016



COLORADO

**Office of Children,
Youth & Families**

Division of Youth Corrections

December 2015 DYC Population Report

I. Summary Population Data	1
II. Detention ADP by Facility	2
III. Commitment Services	
A. State and Contract ADP by Facility	3
B. Community/Other Residential ADP by Facility	4
IV. Commitment ADP and New Commitments by Region	5
V. Parole Services	6



December 2015 DYC Population Report

I. Summary Population Data

DETAINED YOUTH

	December 2015		YTD	
	ADP	% change	ADP	LOS
State-Operated	249.2	-11.8%	269.5	15.4 days
Contracted Staff Secure	3.6	-11.6%	5.4	14.2 days
Total Detained	252.8	-11.8%	274.9	15.4 days

COMMITTED YOUTH

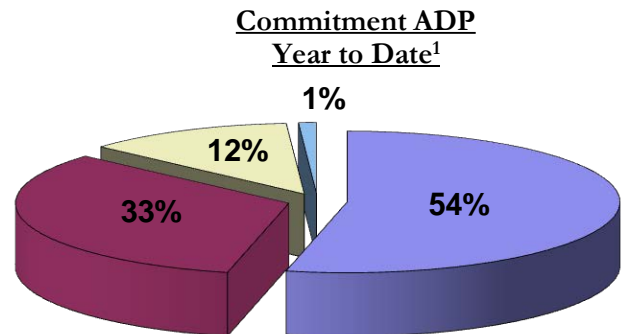
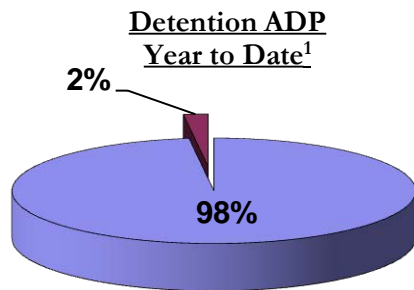
	December 2015		YTD	
	ADP	% change	ADP	LOS
Secure	381.4	1.4%	381.4	9.4 months
Staff Supervised	220.3	-0.7%	235.1	11.3 months
Community Residential	83.6	-1.5%	87.7	6.5 months
Other Residential	6.1	9.8%	7.5	2.5 months
Total Committed Residential	691.3	0.4%	711.6	19.7 months
<i>Committed Residential w/o Boulder</i>	<i>687.8</i>	<i>0.3%</i>	<i>708.3</i>	<i>-</i>

PAROLE YOUTH

	December 2015		YTD	
	ADP	% change	ADP	LOS
Parole	233.2	-5.6%	241.6	6.9 months

TOTAL STATEWIDE ADP

	December 2015		YTD	
	ADP	% change	ADP	LOS
DETENTION	252.8	-11.8%	274.9	15.4 days
COMMITMENT	691.3	0.4%	711.6	19.7 months
PAROLE	233.2	-5.6%	241.6	6.9 months
STATE TOTAL	1,177.3	-3.7%	1,225.8	N/A



■ State-Operated ■ Contracted Staff Secure

■ Secure ■ Staff Supervised ■ Community Residential ■ Other Residential

¹Due to rounding, totals may not add to 100%.

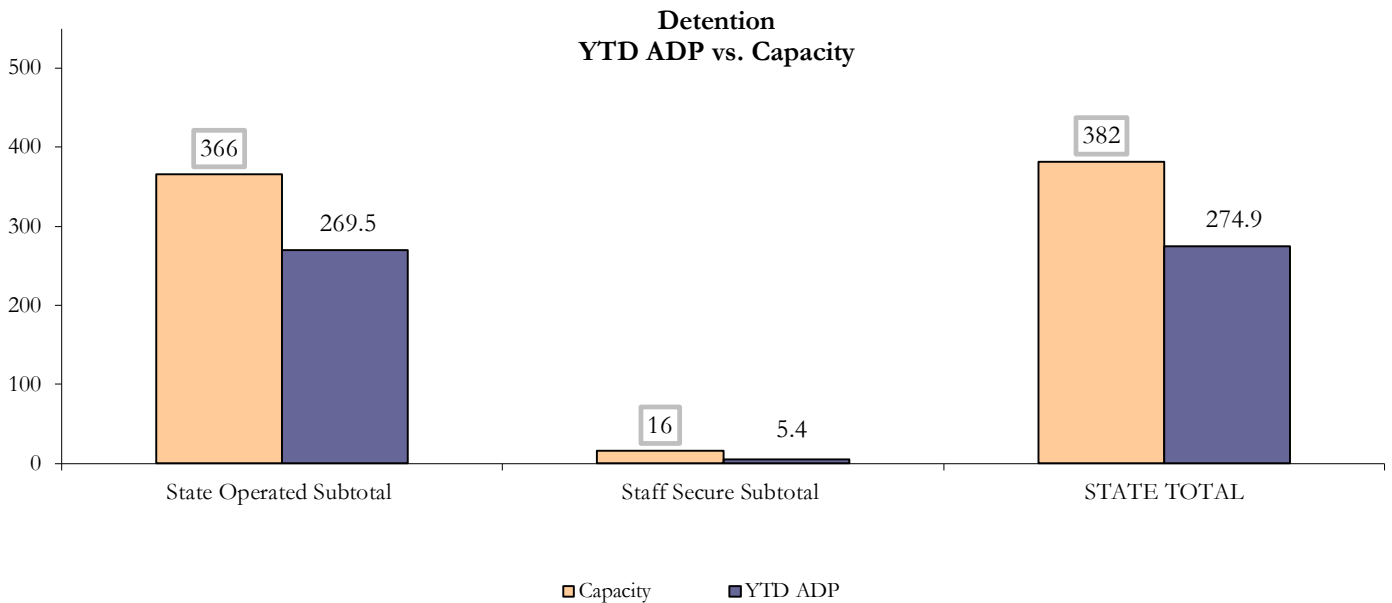
December 2015 DYC Population Report

II. Detention ADP by Facility

State Operated Detention							
Facility	Operating Capacity	Average Daily Population			New Admissions		LOS (days)
		Monthly	YTD	YTD % of Cap	Monthly	YTD	YTD
Adams	30	24.9	26.0	86.6%	43	269	15.9
Gilliam	64	51.7	53.6	83.8%	83	566	16.5
Grand Mesa	27	22.3	19.4	71.9%	35	189	16.0
Marvin Foote	61	33.4	41.1	67.4%	68	520	13.8
Mount View	41	25.9	27.4	66.8%	56	321	17.9
Platte Valley	64	36.2	43.2	67.4%	98	643	14.0
Pueblo	28	12.6	18.1	64.6%	42	303	11.3
Spring Creek	51	42.2	40.7	79.8%	58	383	19.3
State Subtotal	366	249.2	269.5	73.6%	483	3,194	15.4

Staff Secure Detention							
Facility	Operating Capacity	Average Daily Population			New Admissions		LOS (days)
		Monthly	YTD	YTD % of Cap	Monthly	YTD	YTD
Brown Center	3	1.0	1.4	47.9%	0	10	25.9
Robert DeNier	9	0.2	2.4	26.1%	2	30	14.1
Youthtrack San Luis Valley	4	2.5	1.7	41.3%	5	28	9.7
Staff Secure Subtotal	16	3.6	5.4	34.0%	7	68	14.2

STATEWIDE TOTAL							
	Operating Capacity	Average Daily Population			New Admissions		LOS (days)
		Monthly	YTD	YTD % of Cap	Monthly	YTD	YTD
Total Detention	382	252.8	274.9	72.0%	490	3,262	15.4



December 2015 DYC Population Report

III. Commitment Services

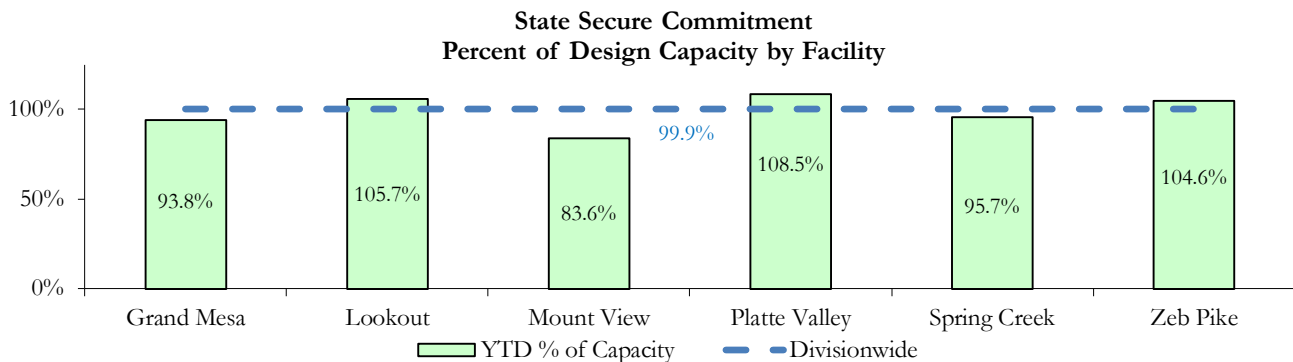
A. State and Contract ADP by Facility

STATE SECURE				
Facility	ADP		Capacity	
	State Secure		Design	
	Monthly	YTD	Capacity	% of YTD
<i>Adams¹</i>	0.1	0.1	-	-
<i>Gilliam¹</i>	0.5	0.4	-	-
Grand Mesa	38.0	37.5	40	93.8%
Lookout	137.5	137.5	130	105.7%
<i>Marvin Foote¹</i>	0.4	0.6	-	-
Mount View	49.1	53.5	64	83.6%
Platte Valley	39.1	42.3	39	108.5%
<i>Pueblo¹</i>	0.0	0.4	-	-
Spring Creek	27.3	27.8	29	95.7%
Zeb Pike	37.9	37.7	36	104.6%
Assessment Total	27.0	28.6	-	
Secure Total	302.8	309.1	-	
STATE SECURE TOTAL	329.7	337.7	338	99.9%

¹ Detention only facilities with commitment ADP due to committed youth being held in detention prior to transfer.

CONTRACT: PRIVATE SECURE + STAFF SUPERVISED

Facility/Program ²	ADP	
	Monthly	YTD
(Private Secure) Betty K. Marler Center	37.7	32.0
(Private Secure) Robert DeNier	13.9	11.8
Alternative Homes For Youth - Greeley	15.4	15.1
Devereux Cleo Wallace	0.9	2.3
Gateway Residential Program - Delta	2.9	3.1
Hilltop (Residential Youth Services)	4.8	3.8
Jefferson Hills - Aurora	51.0	52.1
Ridge View	128.3	142.3
Robert Brown Center	1.6	0.3
Southern Peaks	3.9	4.2
Third Way Center - Lowry	11.5	12.0
<i>Private Secure & Staff Supervised Subtotal</i>	271.9	278.8



² Programs with both Secure and Community placements are aggregated into one category until further TRAILS builds can allow for programs to register as multiple types.

December 2015 DYC Population Report

III. Commitment Services Continued

B. Community/Other Residential ADP by Facility¹

COMMUNITY RESIDENTIAL		
	<i>Monthly</i>	<i>YTD</i>
Attention Homes, Chase House	0.0	0.05
Community Corrections: Comcor	0.0	0.1
Dale House Project	9.5	10.1
Denver Area Youth Services (DAYS)	2.0	1.5
Gateway Residential Program - Grand Junction	0.6	0.3
Griffith Centers for Children, Inc.	6.9	7.2
Job Corps	1.3	3.8
Kids Crossing	3.1	3.7
Maple Star	0.0	0.8
Mesa County Community Corrections	2.0	0.9
Mt Evans Qualifying House	8.6	8.9
Savio House	2.0	1.6
Synergy Administration	6.1	5.7
Third Way Center, Bannock	2.0	3.9
Third Way Center, Pontiac	6.1	6.6
Third Way Center, York	7.2	6.1
Third Way Center, Lincoln	5.1	6.3
Turning Point Center, Prospect	4.2	3.3
Turning Point, Mathews St.	8.9	7.9
Whimspire Child Placement	1.3	1.9
Youthtrack, San Luis Valley	0.0	0.9
Youthtrack, Work and Learn	6.6	6.1
<i>Community Subtotal</i>	<i>83.6</i>	<i>87.7</i>
<i>Private Secure + Staff Supervised + Community Subtotal</i>	<i>355.5</i>	<i>366.5</i>
OTHER RESIDENTIAL		
	<i>Monthly</i>	<i>YTD</i>
Hospital	0.1	0.04
Job Corps Parole Program (Federally funded)	2.8	2.9
Other Mental Health Facility	0.5	0.9
Residential Drug/Alcohol Program	0.0	0.02
Residential Mental Health Program	2.0	2.1
Residential Work Program	0.0	0.03
Shelter Care (short term)	0.0	0.3
<i>Other Residential Subtotal²</i>	<i>6.1</i>	<i>7.5</i>
RESIDENTIAL TOTAL	691.3	711.6

¹ Programs with both Secure and Community placements are aggregated into one category until further TRAILS builds can allow for programs to register as multiple types.

² Due to relatively few youth referred to these types of placements, the Other Residential Subtotals may not be the sum of individual placements; this is typically the result of rounding errors and the method by which ADP is calculated.

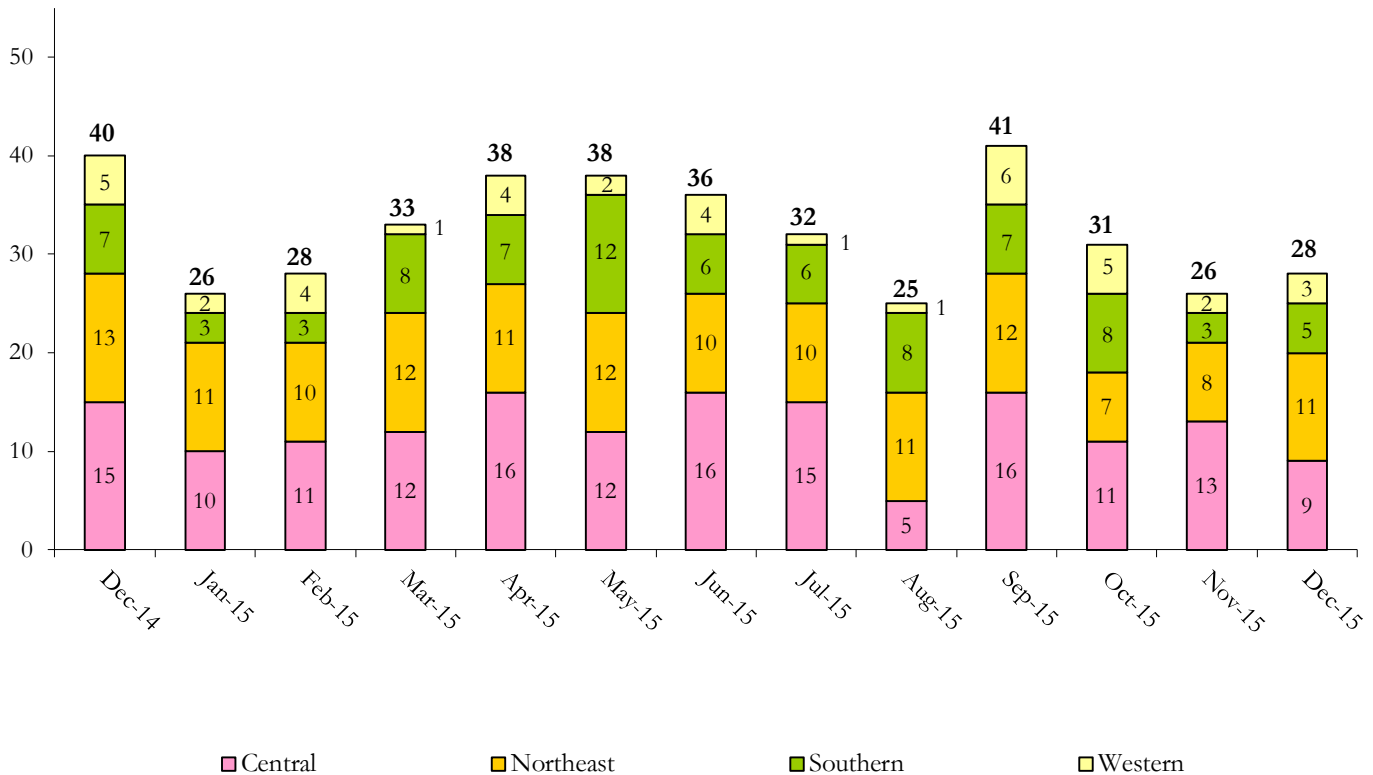
December 2015 DYC Population Report

IV. Commitment ADP and New Commitments

COMMITMENT ADP				
Region	Monthly		YTD	
	December	% Change	December	% Change from Prior FY
Central Region	292.8	1.4%	303.0	-5.7%
Northeast Region	190.9	1.2%	193.5	-4.0%
Southern Region	144.8	-2.3%	151.9	-5.6%
Western Region	62.9	-0.3%	63.3	-14.0%
Commitment ADP	691.3	0.4%	711.6	-6.0%

NEW COMMITMENTS					
	FY 15-16		FY 14-15		% Change from last YTD
	December	YTD	December	YTD	
Central Region	9	70	15	78	-10.3%
Northeast Region	11	63	13	70	-10.0%
Southern Region	5	37	7	34	8.8%
Western Region	3	19	5	19	0.0%
TOTAL	28	189	40	201	-6.0%

Monthly New Commitments



December 2015 DYC Population Report

V. Parole Services

PAROLE ADP

Region	Monthly	YTD		% Change from prev YTD
		FY 15-16	FY 14-15	
Central Region	101.1	100.9	103.6	-2.6%
Northeast Region	68.0	67.3	70.4	-4.4%
Southern Region	42.4	48.2	37.5	28.4%
Western Region	21.7	25.2	31.9	-21.1%
Total	233.2	241.6	243.4	-0.8%

Region	Parole Intakes		Parole Discharges		LOS
	Monthly	YTD	Monthly	YTD	
Central Region	9	81	9	76	6.9
Northeast Region	11	65	10	58	6.2
Southern Region	7	37	13	60	7.7
Western Region	2	18	5	28	6.7
Total	29	201	37	222	6.9

