

November FY 2015-2016 MONTHLY POPULATION REPORT

Prepared by the Division of Youth Corrections (DYC)
Research and Evaluation Unit
December 29, 2015



COLORADO

**Office of Children,
Youth & Families**

Division of Youth Corrections

November 2015 DYC Population Report

I. Summary Population Data	1
II. Detention ADP by Facility	2
III. Commitment Services	
A. State and Contract ADP by Facility	3
B. Community/Other Residential ADP by Facility	4
IV. Commitment ADP and New Commitments by Region	5
V. Parole Services	6



November 2015 DYC Population Report

I. Summary Population Data

DETAINED YOUTH

	November 2015		YTD	
	ADP	% change	ADP	LOS
State-Operated	282.5	2.5%	274.9	15.3 days
Contracted Staff Secure	4.1	-31.1%	5.8	14.4 days
Total Detained	286.5	1.8%	280.7	15.3 days

COMMITTED YOUTH

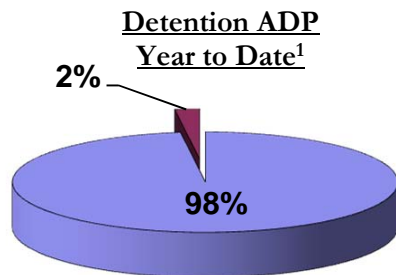
	November 2015		YTD	
	ADP	% change	ADP	LOS
Secure	376.3	-1.4%	381.5	9.7 months
Staff Supervised	221.9	-9.2%	238.9	11.2 months
Community Residential	84.9	-1.3%	88.6	6.5 months
Other Residential	5.5	-4.6%	7.3	1.9 months
Total Committed Residential	688.6	-4.0%	716.3	20.1 months
<i>Committed Residential w/o Boulder</i>	<i>685.7</i>	<i>-4.0%</i>	<i>713.0</i>	<i>-</i>

PAROLE YOUTH

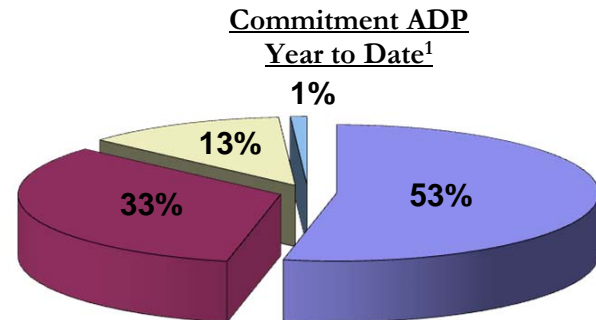
	November 2015		YTD	
	ADP	% change	ADP	LOS
Parole	247.0	8.6%	242.4	6.9 months

TOTAL STATEWIDE ADP

	November 2015		YTD	
	ADP	% change	ADP	LOS
DETENTION	286.5	1.8%	280.7	15.3 days
COMMITMENT	688.6	-4.0%	716.3	20.1 months
PAROLE	247.0	8.6%	242.4	6.9 months
STATE TOTAL	1,222.1	-0.4%	1,239.4	N/A



■ State-Operated ■ Contracted Staff Secure



■ Secure ■ Staff Supervised ■ Community Residential ■ Other Residential

¹ Due to rounding, totals may not add to 100%.

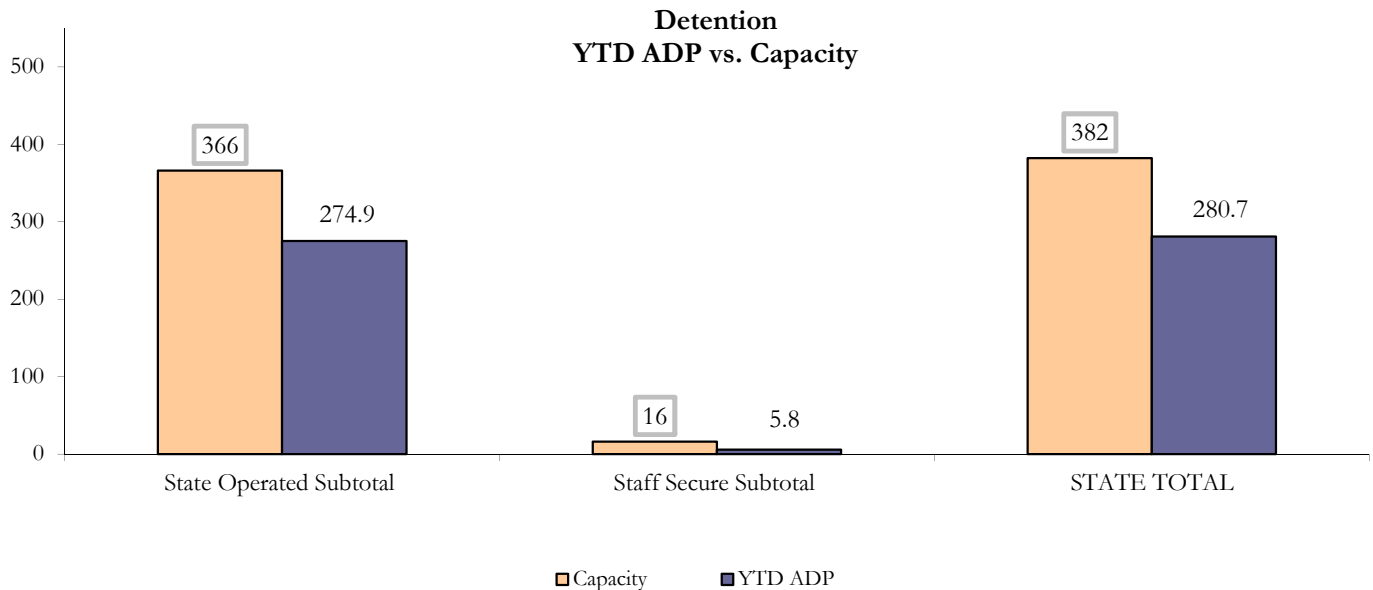
November 2015 DYC Population Report

II. Detention ADP by Facility

State Operated Detention							
Facility	Operating Capacity	Average Daily Population			New Admissions		LOS (days)
		Monthly	YTD	YTD % of Cap	Monthly	YTD	YTD
Adams	30	27.5	26.2	87.3%	44	226	14.7
Gilliam	64	53.8	54.0	84.4%	99	483	16.5
Grand Mesa	27	21.5	18.8	69.8%	26	154	15.8
Marvin Foote	61	40.5	42.6	69.9%	69	452	13.5
Mount View	41	30.6	28.4	69.2%	50	266	18.4
Platte Valley	64	47.9	45.1	70.5%	102	545	14.3
Pueblo	28	16.4	19.2	68.6%	49	261	11.7
Spring Creek	51	44.4	40.6	79.5%	51	325	18.5
State Subtotal	366	282.5	274.9	75.1%	490	2,712	15.3

Staff Secure Detention							
Facility	Operating Capacity	Average Daily Population			New Admissions		LOS (days)
		Monthly	YTD	YTD % of Cap	Monthly	YTD	YTD
Brown Center	3	0.3	1.5	50.8%	3	10	25.9
Robert DeNier	9	1.7	2.8	31.0%	2	28	14.1
Youthtrack San Luis Valley	4	2.1	1.5	37.3%	7	23	9.3
Staff Secure Subtotal	16	4.1	5.8	36.3%	12	61	14.4

STATEWIDE TOTAL							
	Operating Capacity	Average Daily Population			New Admissions		LOS (days)
		Monthly	YTD	YTD % of Cap	Monthly	YTD	YTD
Total Detention	382	286.5	280.7	73.5%	502	2,773	15.3



November 2015 DYC Population Report

III. Commitment Services

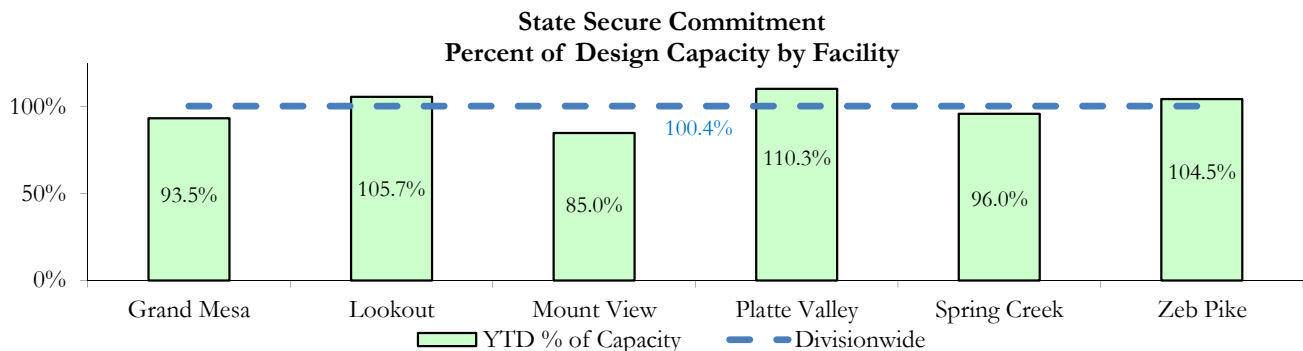
A. State and Contract ADP by Facility

STATE SECURE				
Facility	ADP		Capacity	
	State Secure		Design	
	Monthly	YTD	Capacity	% of YTD
<i>Adams</i> ¹	0.2	0.1	-	-
<i>Gilliam</i> ¹	0.2	0.4	-	-
Grand Mesa	40.0	37.4	40	93.5%
Lookout	137.2	137.5	130	105.7%
<i>Marvin Foote</i> ¹	0.4	0.7	-	-
Mount View	47.4	54.4	64	85.0%
Platte Valley	38.9	43.0	39	110.3%
<i>Pueblo</i> ¹	0.0	0.4	-	-
Spring Creek	26.6	27.8	29	96.0%
Zeb Pike	37.5	37.6	36	104.5%
Assessment Total	28.0	29.0	-	
Secure Total	300.4	310.3	-	
STATE SECURE TOTAL	328.4	339.3	338	100.4%

¹ Detention only facilities with commitment ADP due to committed youth being held in detention prior to transfer.

CONTRACT: PRIVATE SECURE + STAFF SUPERVISED

Facility/Program ²	ADP	
	Monthly	YTD
(Private Secure) Betty K. Marler Center	34.9	30.8
(Private Secure) Robert DeNier	12.9	11.4
Alternative Homes For Youth - Greeley	12.8	15.0
Devereux Cleo Wallace	1.8	2.6
Gateway Residential Program - Delta	2.1	3.1
Hilltop (Residential Youth Services)	3.5	3.6
Jefferson Hills - Aurora	51.1	52.3
Ridge View	133.7	145.2
Southern Peaks	4.4	5.1
Third Way Center - Lowry	12.5	12.1
<i>Private Secure & Staff Supervised Subtotal</i>	269.7	281.1



² Programs with both Secure and Community placements are aggregated into one category until further TRAILS builds can allow for programs to register as multiple types.

November 2015 DYC Population Report

III. Commitment Services Continued

B. Community/Other Residential ADP by Facility¹

COMMUNITY RESIDENTIAL		
	<i>Monthly</i>	<i>YTD</i>
Attention Homes, Chase House	0.0	0.1
Community Corrections: Comcor	0.0	0.1
Dale House Project	10.7	10.3
Denver Area Youth Services (DAYS)	2.3	1.4
Gateway Residential Program - Grand Junction	0.0	0.3
Griffith Centers for Children, Inc.	6.0	7.3
Job Corps	3.8	4.2
Kids Crossing	3.0	3.8
Maple Star	0.8	1.0
Mesa County Community Corrections	2.0	0.7
Mt Evans Qualifying House	7.9	9.0
Savio House	2.0	1.6
Synergy Administration	5.9	5.6
Third Way Center, Bannock	4.0	4.4
Third Way Center, Pontiac	6.0	6.7
Third Way Center, York	6.7	5.9
Third Way Center, Lincoln	4.3	6.5
Turning Point Center, Prospect	4.5	3.6
Turning Point, Mathews St.	8.6	7.1
Whimspire Child Placement	1.1	2.0
Youthtrack, San Luis Valley	0.0	1.0
Youthtrack, Work and Learn	5.4	6.0
<i>Community Subtotal</i>	<i>84.9</i>	<i>88.6</i>
<i>Private Secure + Staff Supervised + Community Subtotal</i>	<i>354.6</i>	<i>369.7</i>
OTHER RESIDENTIAL		
	<i>Monthly</i>	<i>YTD</i>
Hospital	0.0	0.04
Job Corps Parole Program (Federally funded)	3.4	2.9
Other Mental Health Facility	1.0	1.0
Residential Drug/Alcohol Program	0.0	0.02
Residential Mental Health Program	1.0	1.9
Residential Work Program	0.0	0.04
Shelter Care (short term)	0.0	0.4
<i>Other Residential Subtotal²</i>	<i>5.5</i>	<i>7.3</i>
RESIDENTIAL TOTAL	688.6	716.3

¹ Programs with both Secure and Community placements are aggregated into one category until further TRAILS builds can allow for programs to register as multiple types.

² Due to relatively few youth referred to these types of placements, the Other Residential Subtotals may not be the sum of individual placements; this is typically the result of rounding errors and the method by which ADP is calculated.

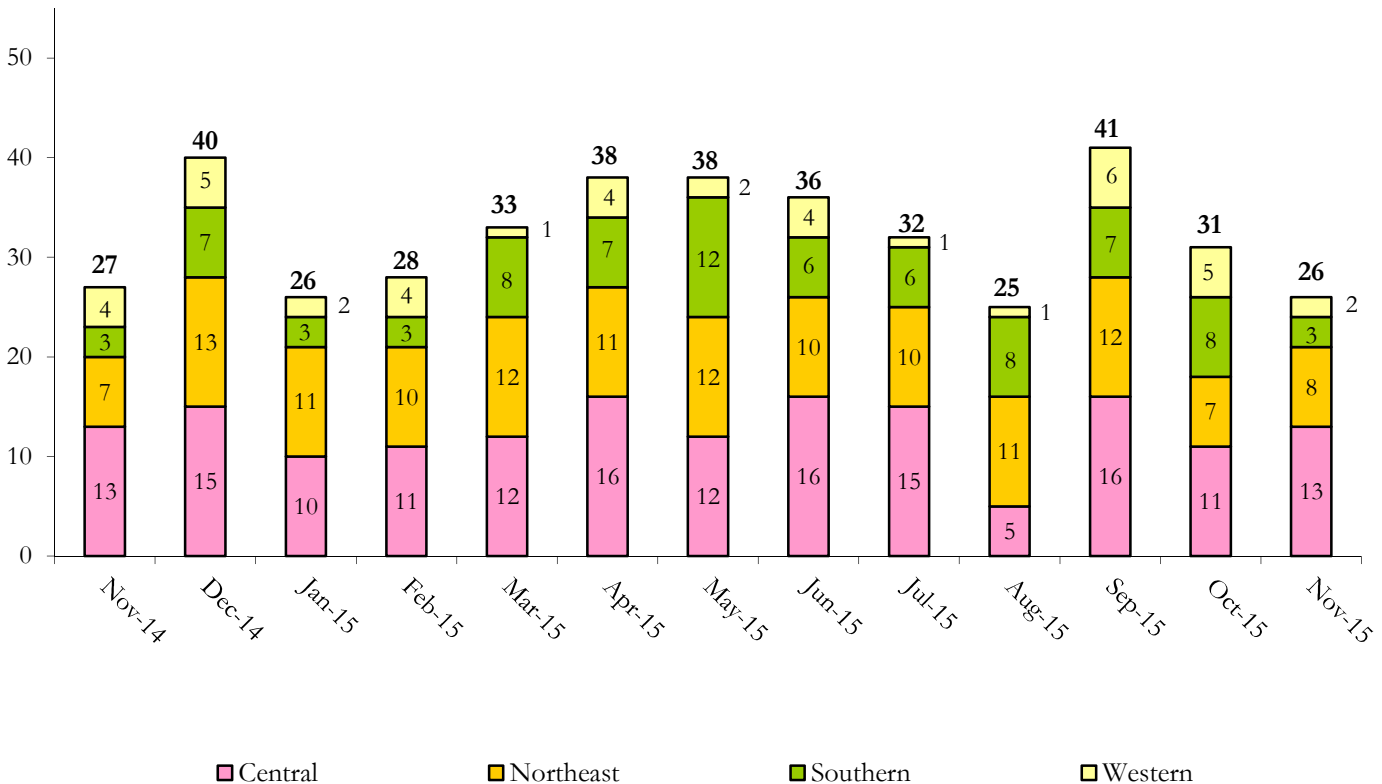
November 2015 DYC Population Report

IV. Commitment ADP and New Commitments

COMMITMENT ADP				
Region	Monthly		YTD	
	November	% Change	November	% Change from Prior FY
Central Region	288.8	-4.7%	305.0	-5.6%
Northeast Region	188.6	-5.2%	194.8	-3.4%
Southern Region	148.2	-3.6%	152.5	-5.8%
Western Region	63.0	1.7%	64.0	-13.4%
Commitment ADP	688.6	-4.1%	716.3	-5.8%

NEW COMMITMENTS					
	FY 15-16		FY 14-15		% Change from last YTD
	November	YTD	November	YTD	
Central Region	13	61	16	79	-22.8%
Northeast Region	8	52	8	63	-17.5%
Southern Region	3	32	8	43	-25.6%
Western Region	2	16	3	28	-42.9%
TOTAL	26	161	35	213	-24.4%

Monthly New Commitments



November 2015 DYC Population Report

V. Parole Services

PAROLE ADP

Region	Monthly	YTD		% Change from prev YTD
		FY 15-16	FY 14-15	
Central Region	108.0	100.7	104.5	-3.6%
Northeast Region	69.6	66.6	68.8	-3.1%
Southern Region	46.2	49.3	37.4	31.8%
Western Region	23.2	25.7	33.5	-23.2%
Total	247.0	242.4	244.2	-0.7%

Region	Parole Intakes		Parole Discharges		LOS
	Monthly	YTD	Monthly	YTD	
Central Region	14	72	13	66	7.0
Northeast Region	14	52	8	48	6.1
Southern Region	9	30	6	47	7.7
Western Region	3	16	2	23	6.8
Total	40	170	29	184	6.9

