

October FY 2015-2016 MONTHLY POPULATION REPORT

Prepared by the Division of Youth Corrections (DYC)
Research and Evaluation Unit
November 20, 2015



COLORADO
**Office of Children,
Youth & Families**
Division of Youth Corrections

October 2015 DYC Population Report

I. Summary Population Data	1
II. Detention ADP by Facility	2
III. Commitment Services	
A. State and Contract ADP by Facility	3
B. Community/Other Residential ADP by Facility	4
IV. Commitment ADP and New Commitments by Region	5
V. Parole Services	6



October 2015 DYC Population Report

I. Summary Population Data*

DETAINED YOUTH

	October 2015		YTD	
	ADP	% change	ADP	LOS
State-Operated	275.5	4.0%	272.2	14.9 days
Contracted Staff Secure	5.9	-2.7%	6.3	16.0 days
Total Detained	281.4	3.8%	278.5	14.9 days

COMMITTED YOUTH

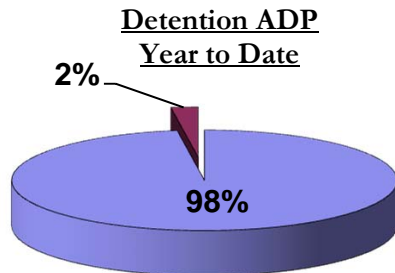
	October 2015		YTD	
	ADP	% change	ADP	LOS
Secure	381.5	0.8%	382.8	10.2 months
Staff Supervised	244.3	-2.1%	243.3	11.4 months
Community Residential	86.0	-7.8%	89.5	6.2 months
Other Residential	5.8	-7.0%	7.8	2.0 months
Total Committed Residential	717.6	-1.4%	723.4	20.1 months
<i>Committed Residential w/o Boulder</i>	<i>714.6</i>	<i>-1.4%</i>	<i>720.0</i>	<i>-</i>

PAROLE YOUTH

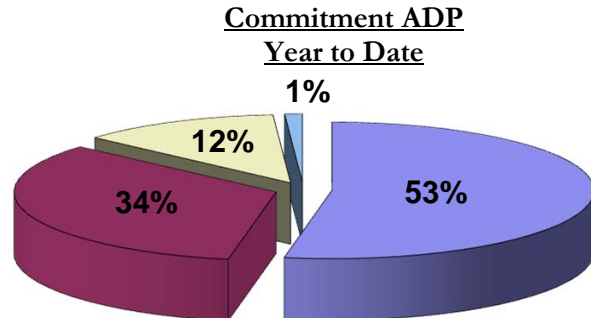
	October 2015		YTD	
	ADP	% change	ADP	LOS
Parole	227.5	-5.0%	239.5	7.1 months

TOTAL STATEWIDE ADP

	October 2015		YTD	
	ADP	% change	ADP	LOS
DETENTION	281.4	3.8%	278.5	14.9 days
COMMITMENT	717.6	-1.4%	723.4	20.1 months
PAROLE	227.5	-5.0%	239.5	7.1 months
STATE TOTAL	1,226.6	-0.9%	1,241.4	N/A



■ State-Operated ■ Contracted Staff Secure



■ Secure ■ Staff Supervised ■ Community Residential ■ Other Residential

*Due to rounding, totals may not add to 100%.

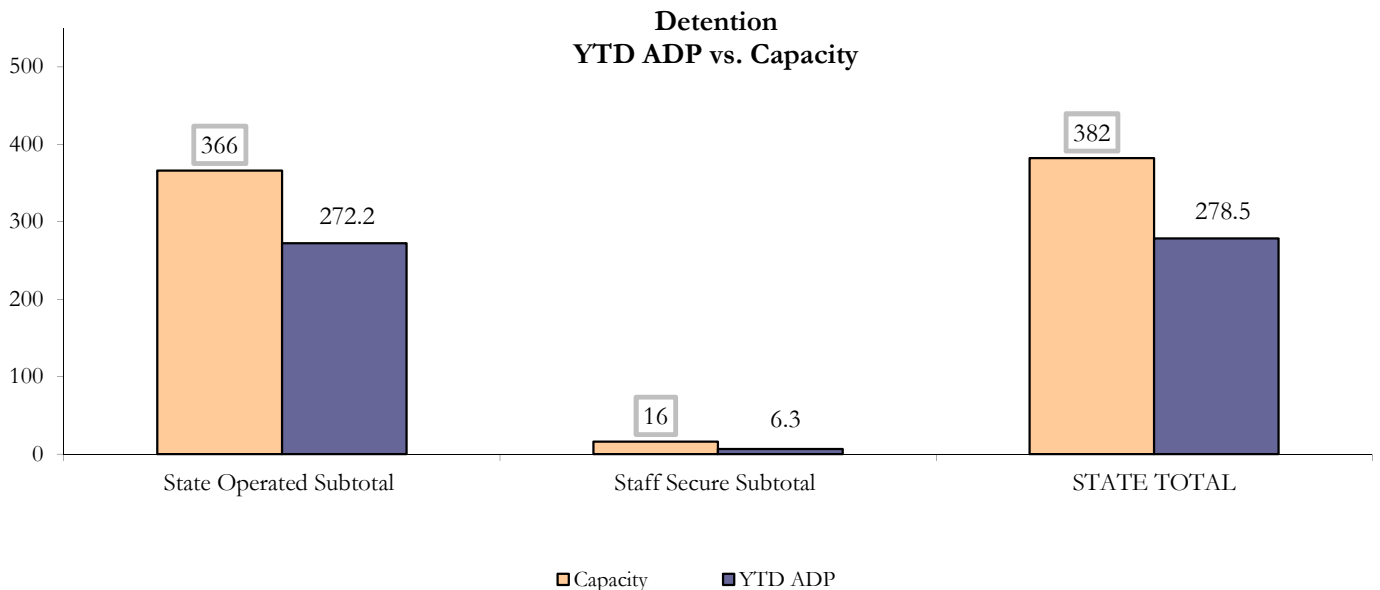
October 2015 DYC Population Report

II. Detention Program Services Continued

State Operated Detention							
Facility	Operating Capacity	Average Daily Population			New Admissions		LOS (days)
		Monthly	YTD	YTD % of Cap	Monthly	YTD	YTD
Adams	30	25.8	25.9	86.2%	47	182	14.0
Gilliam	64	53.8	54.1	84.5%	115	384	16.7
Grand Mesa	27	19.0	18.2	67.4%	22	128	15.9
Marvin Foote	61	43.1	43.2	70.8%	91	382	13.5
Mount View	41	31.0	27.4	66.8%	57	215	14.8
Platte Valley	64	42.7	44.0	68.8%	125	442	13.9
Pueblo	28	17.8	19.9	71.0%	64	212	12.0
Spring Creek	51	42.2	39.6	77.7%	65	273	18.8
State Subtotal	366	275.5	272.2	74.4%	586	2,218	14.9

Staff Secure Detention							
Facility	Operating Capacity	Average Daily Population			New Admissions		LOS (days)
		Monthly	YTD	YTD % of Cap	Monthly	YTD	YTD
Brown Center	3	0.8	1.8	61.1%	0	7	31.5
Robert DeNier	9	3.7	3.1	34.7%	6	26	13.6
Youthtrack San Luis Valley	4	1.4	1.3	33.6%	7	16	10.8
Staff Secure Subtotal	16	5.9	6.3	39.3%	13	49	16.0

STATEWIDE TOTAL							
	Operating Capacity	Average Daily Population			New Admissions		LOS (days)
		Monthly	YTD	YTD % of Cap	Monthly	YTD	YTD
Total Detention	382	281.4	278.5	72.9%	599	2,267	14.9



October 2015 DYC Population Report

III. Commitment Services

A. State and Contract ADP by Facility

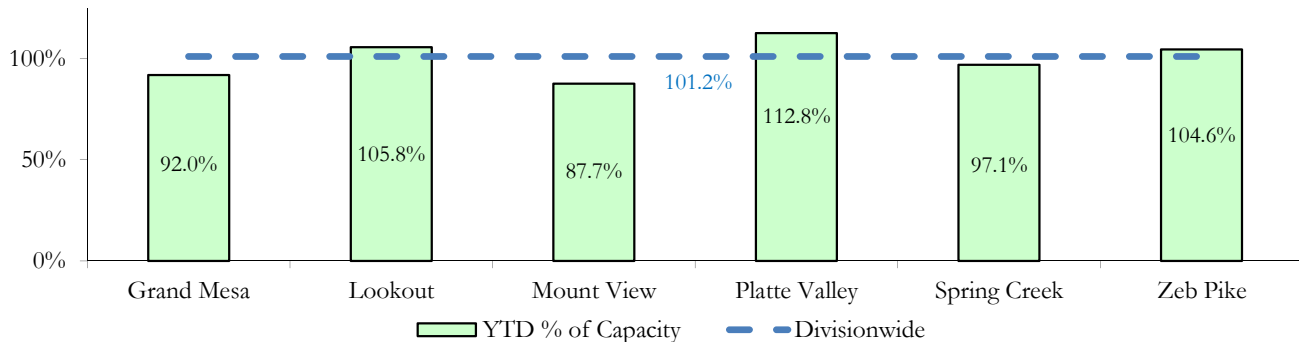
STATE SECURE				
Facility	ADP		Capacity	
	State Secure		Design	
	Monthly	YTD	Capacity	% of YTD
<i>Adams*</i>	0.1	0.0	-	-
<i>Gilliam*</i>	0.4	0.4	-	-
Grand Mesa	35.2	36.8	40	92.0%
Lookout	137.2	137.5	130	105.8%
<i>Marvin Foote*</i>	0.6	0.7	-	-
Mount View	54.0	56.1	64	87.7%
Platte Valley	40.2	44.0	39	112.8%
<i>Pueblo*</i>	0.5	0.5	-	-
Spring Creek	29.9	28.2	29	97.1%
Zeb Pike	37.9	37.6	36	104.6%
Assessment Total	29.7	29.2	-	
Secure Total	306.1	312.7	-	
STATE SECURE TOTAL	335.8	342.0	338	101.2%

**Detention only facilities with commitment ADP due to committed youth being held in detention prior to transfer.*

CONTRACT: PRIVATE SECURE + STAFF SUPERVISED

Facility/Program	ADP	
	Monthly	YTD
(Private Secure) Betty K. Marler Center	31.7	29.8
(Private Secure) Robert DeNier	14.1	11.0
Alternative Homes For Youth - Greeley	15.6	15.6
Devereux Cleo Wallace	2.8	2.8
Gateway Residential Program - Delta	3.0	3.3
Hilltop (Residential Youth Services)	4.8	3.6
Jefferson Hills - Aurora	52.4	52.8
Ridge View	147.8	148.0
Southern Peaks	4.4	5.2
Third Way Center - Lowry	13.4	12.0
<i>Private Secure & Staff Supervised Subtotal</i>	290.0	284.1

**State Secure Commitment
Percent of Design Capacity by Facility**



October 2015 DYC Population Report

III. Commitment Services Continued

B. Community/Other Residential ADP by Facility

COMMUNITY RESIDENTIAL		
	<i>Monthly</i>	<i>YTD</i>
Attention Homes, Chase House	0.0	0.1
Community Corrections: Comcor	0.0	0.1
Dale House Project	10.4	10.2
Denver Area Youth Services (DAYS)	1.4	1.2
Gateway Residential Program - Grand Junction	0.0	0.3
Griffith Centers for Children, Inc.	5.9	7.6
Job Corps	3.4	4.3
Kids Crossing	2.6	4.0
Maple Star	1.0	1.0
Mesa County Community Corrections	1.2	0.4
Mt Evans Qualifying House	8.7	9.3
Savio House	2.0	1.5
Synergy Administration	6.0	5.6
Third Way Center, Bannock	4.0	4.5
Third Way Center, Pontiac	7.2	6.8
Third Way Center, York	6.5	5.8
Third Way Center, Lincoln	5.6	7.0
Turning Point Center, Prospect	5.5	3.4
Turning Point, Mathews St.	5.8	6.8
Whimspire Child Placement	2.0	2.2
Youthtrack, San Luis Valley	0.0	1.3
Youthtrack, Work and Learn	6.9	6.2
<i>Community Subtotal</i>	<i>86.0</i>	<i>89.5</i>
<i>Private Secure + Staff Supervised + Community Subtotal</i>	<i>376.0</i>	<i>373.7</i>
OTHER RESIDENTIAL		
	<i>Monthly</i>	<i>YTD</i>
Hospital	0.0	0.05
Job Corps Parole Program (Federally funded)	3.0	2.8
Other Mental Health Facility	1.0	1.0
Residential Drug/Alcohol Program	0.1	0.03
Residential Mental Health Program	1.1	2.1
Residential Work Program	0.0	0.05
Shelter Care (short term)	0.6	0.5
<i>Other Residential Subtotal*</i>	<i>5.8</i>	<i>7.8</i>
RESIDENTIAL TOTAL	717.6	723.4

**Due to relatively few youth referred to these types of placements, the Other Residential Subtotals may not be the sum of individual placements; this is typically the result of rounding errors and the method by which ADP is calculated.*

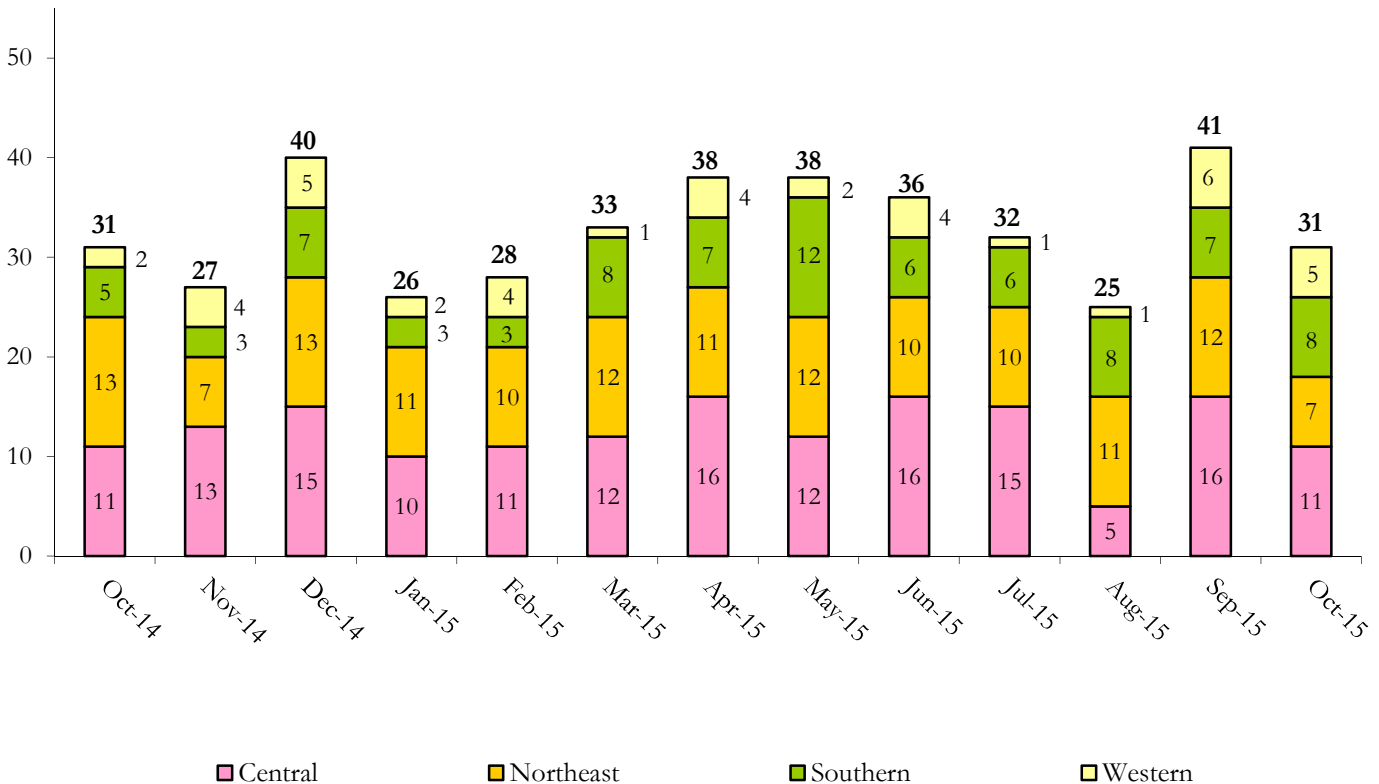
October 2015 DYC Population Report

IV. Commitment ADP and New Commitments

COMMITMENT ADP				
Region	Monthly		YTD	
	October	% Change	October	% Change from Prior FY
Central Region	303.0	-3.3%	307.9	-5.2%
Northeast Region	198.9	0.2%	197.7	-2.0%
Southern Region	153.8	-0.4%	153.5	-6.6%
Western Region	62.0	1.0%	64.3	-12.3%
Commitment ADP	717.6	-1.4%	723.4	-5.3%

NEW COMMITMENTS					
	FY 15-16		FY 14-15		% Change from last YTD
	October	YTD	October	YTD	
Central Region	11	48	11	50	-4.0%
Northeast Region	7	43	13	49	-12.2%
Southern Region	8	30	5	24	25.0%
Western Region	5	14	2	10	40.0%
TOTAL	31	135	31	133	1.5%

Monthly New Commitments



October 2015 DYC Population Report

V. Parole Services

PAROLE ADP				
Region	Monthly	YTD		% Change from prev YTD
		FY 15-16	FY 14-15	
Central Region	99.3	96.9	104.8	-7.6%
Northeast Region	61.2	65.9	67.6	-2.5%
Southern Region	46.9	50.3	37.7	33.6%
Western Region	20.1	26.3	34.6	-23.9%
Total	227.5	239.5	244.7	-2.1%

Region	Parole Intakes		Parole Discharges		LOS
	Monthly	YTD	Monthly	YTD	
Central Region	24	58	20	53	7.2
Northeast Region	8	38	12	40	6.2
Southern Region	7	21	10	41	7.9
Western Region	3	13	5	21	6.9
Total	42	130	47	155	7.1

