

September FY 2015-2016 MONTHLY POPULATION REPORT

Prepared by the Division of Youth Corrections (DYC)
Research and Evaluation Unit
October 27, 2015



COLORADO

**Office of Children,
Youth & Families**

Division of Youth Corrections

September 2015 DYC Population Report

I. Summary Population Data	1
II. Detention ADP by Facility	2
III. Commitment Services	
A. State and Contract ADP by Facility	3
B. Community/Other Residential ADP by Facility	4
IV. Commitment ADP and New Commitments by Region	5
V. Parole Services	6



September 2015 DYC Population Report

I. Summary Population Data*

DETAINED YOUTH

	September 2015		YTD	
	ADP	% change	ADP	LOS
State-Operated	265.0	-5.1%	272.0	15.1 days
Contracted Staff Secure	6.1	2.0%	6.4	13.7 days
Total Detained	271.1	-4.9%	278.4	15.1 days

COMMITTED YOUTH

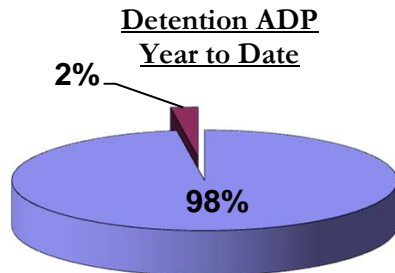
	September 2015		YTD	
	ADP	% change	ADP	LOS
Secure	378.6	-0.4%	383.2	10.5 months
Staff Supervised	249.5	1.9%	243.1	11.6 months
Community Residential	93.3	14.8%	90.6	6.0 months
Other Residential	6.2	-40.3%	8.1	2.1 months
Total Committed Residential	727.6	1.5%	725.0	20.1 months
<i>Committed Residential w/o Boulder</i>	<i>724.6</i>	<i>1.7%</i>	<i>721.4</i>	<i>-</i>

PAROLE YOUTH

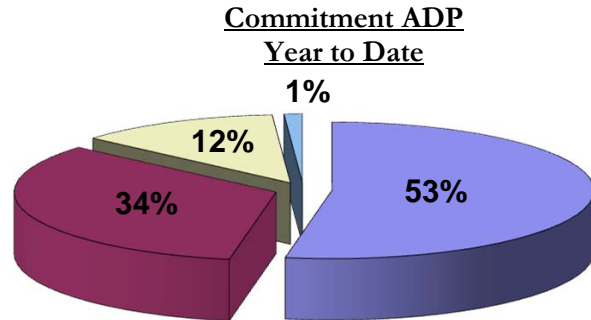
	September 2015		YTD	
	ADP	% change	ADP	LOS
Parole	239.5	-1.1%	242.0	7.4 months

TOTAL STATEWIDE ADP

	September 2015		YTD	
	ADP	% change	ADP	LOS
DETENTION	271.1	-4.9%	278.4	15.1 days
COMMITMENT	727.6	1.5%	725.0	20.1 months
PAROLE	239.5	-1.1%	242.0	7.4 months
STATE TOTAL	1,238.2	-0.5%	1,245.4	N/A



■ State-Operated ■ Contracted Staff Secure



■ Secure ■ Staff Supervised ■ Community Residential ■ Other Residential

*Due to rounding, totals may not add to 100%.

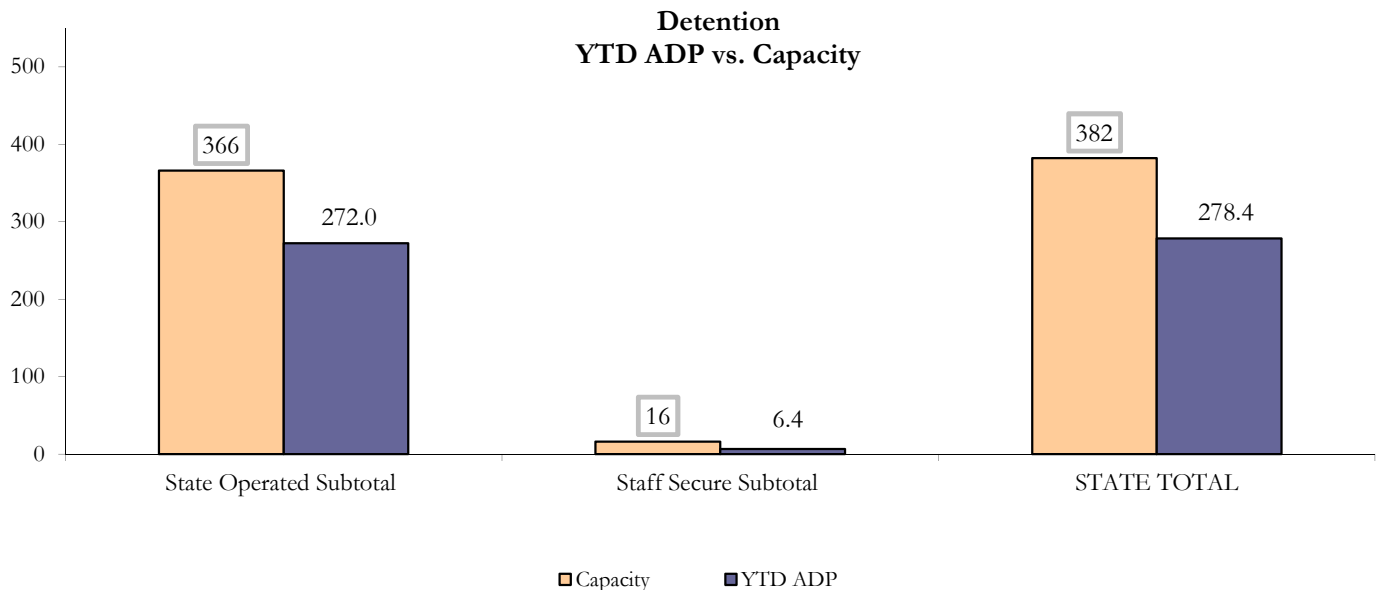
September 2015 DYC Population Report

II. Detention ADP by Facility

State Operated Detention							
Facility	Operating Capacity	Average Daily Population			New Admissions		LOS (days)
		Monthly	YTD	YTD % of Cap	Monthly	YTD	YTD
Adams	30	25.3	25.9	86.3%	48	135	12.7
Gilliam	64	47.6	54.2	84.7%	93	269	17.7
Grand Mesa	27	16.9	17.9	66.4%	38	106	15.5
Marvin Foote	61	48.0	43.2	70.8%	102	291	13.6
Mount View	41	26.5	26.2	63.9%	51	158	14.1
Platte Valley	64	43.7	45.4	71.0%	104	320	14.6
Pueblo	28	16.5	20.6	73.5%	42	148	12.6
Spring Creek	51	40.4	38.6	75.6%	69	207	18.8
State Subtotal	366	265.0	272.0	74.3%	547	1,634	15.1

Staff Secure Detention							
Facility	Operating Capacity	Average Daily Population			New Admissions		LOS (days)
		Monthly	YTD	YTD % of Cap	Monthly	YTD	YTD
Brown Center	3	2.5	2.2	72.5%	3	7	13.5
Robert DeNier	9	2.6	2.9	32.3%	9	20	14.3
Youthtrack San Luis Valley	4	1.1	1.3	33.3%	5	9	12.8
Staff Secure Subtotal	16	6.1	6.4	40.1%	17	36	13.7

STATEWIDE TOTAL							
	Operating Capacity	Average Daily Population			New Admissions		LOS (days)
		Monthly	YTD	YTD % of Cap	Monthly	YTD	YTD
Total Detention	382	271.1	278.4	72.9%	564	1,670	15.1



September 2015 DYC Population Report

III. Commitment Services

A. State and Contract ADP by Facility

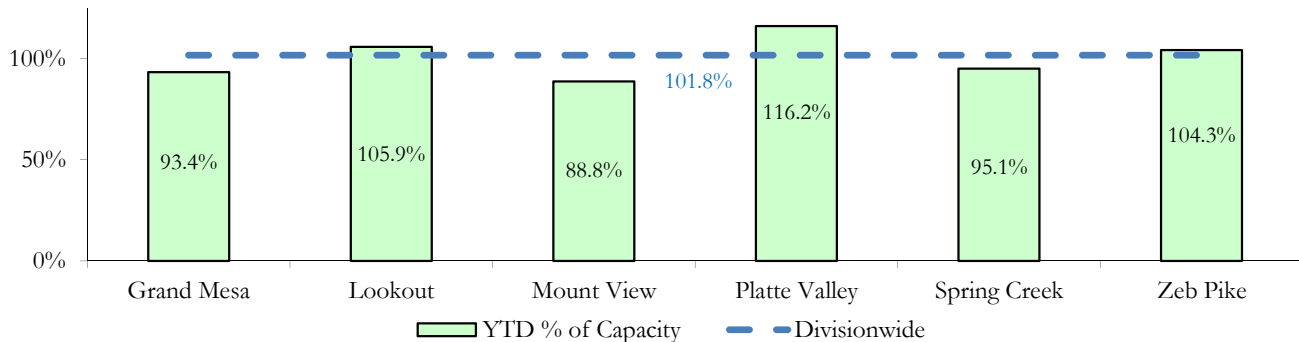
STATE SECURE					
Facility		ADP		Capacity	
		State Secure		Design	
		Monthly	YTD	Capacity	% of YTD
	<i>Adams*</i>	0.0	0.0	-	-
	<i>Gilliam*</i>	0.5	0.4	-	-
	Grand Mesa	32.4	37.3	40	93.4%
	Lookout	137.2	137.6	130	105.9%
	<i>Marvin Foote*</i>	1.2	0.8	-	-
	Mount View	57.5	56.8	64	88.8%
	Platte Valley	42.0	45.3	39	116.2%
	<i>Pueblo*</i>	0.2	0.6	-	-
	Spring Creek	27.5	27.6	29	95.1%
	Zeb Pike	37.3	37.6	36	104.3%
	Assessment Total	32.4	28.8	-	
	Secure Total	303.5	315.3	-	
	STATE SECURE TOTAL	335.9	344.1	338	101.8%

**Detention only facilities with commitment ADP due to committed youth being held in detention prior to transfer.*

CONTRACT: PRIVATE SECURE + STAFF SUPERVISED

Facility/Program	ADP	
	Monthly	YTD
(Private Secure) Betty K. Marler Center	30.9	29.2
(Private Secure) Robert DeNier	11.8	10.0
Alternative Homes For Youth - Greeley	15.4	15.6
Devereux Cleo Wallace	2.9	2.8
Gateway Residential Program - Delta	3.0	3.5
Hilltop (Residential Youth Services)	3.2	3.2
Jefferson Hills - Aurora	51.9	52.9
Ridge View	157.1	148.0
Southern Peaks	5.2	5.5
Third Way Center - Lowry	10.9	11.6
<i>Private Secure & Staff Supervised Subtotal</i>	292.2	282.2

**State Secure Commitment
Percent of Design Capacity by Facility**



September 2015 DYC Population Report

III. Commitment Services Continued

B. Community/Other Residential ADP by Facility

COMMUNITY RESIDENTIAL		
	<i>Monthly</i>	<i>YTD</i>
Attention Homes, Chase House	0.0	0.1
Community Corrections: Comcor	0.0	0.1
Dale House Project	11.2	10.1
Denver Area Youth Services (DAYS)	2.0	1.1
Gateway Residential Program - Grand Junction	0.0	0.4
Griffith Centers for Children, Inc.	7.4	8.1
Job Corps	5.4	4.7
Kids Crossing	3.6	4.5
Maple Star	1.0	1.0
Mesa County Community Corrections	0.6	0.2
Mt Evans Qualifying House	9.3	9.5
Savio House	1.9	1.3
Synergy Administration	6.0	5.4
Third Way Center, Bannock	4.5	4.7
Third Way Center, Pontiac	6.4	6.7
Third Way Center, York	6.7	5.4
Third Way Center, Lincoln	6.6	7.5
Turning Point Center, Prospect	2.9	2.6
Turning Point, Mathews St.	7.7	7.1
Whimspire Child Placement	2.0	2.3
Youthtrack, San Luis Valley	0.5	1.7
Youthtrack, Work and Learn	7.6	6.0
<i>Community Subtotal</i>	<i>93.3</i>	<i>90.6</i>
<i>Private Secure + Staff Supervised + Community Subtotal</i>	<i>385.5</i>	<i>372.9</i>
OTHER RESIDENTIAL		
	<i>Monthly</i>	<i>YTD</i>
Hospital	0.0	0.1
Job Corps Parole Program (Federally funded)	2.7	2.7
Other Mental Health Facility	1.2	1.0
Residential Mental Health Program	2.0	2.5
Residential Work Program	0.0	0.1
Shelter Care (short term)	0.0	0.5
<i>Other Residential Subtotal*</i>	<i>6.2</i>	<i>8.1</i>
RESIDENTIAL TOTAL	727.6	725.0

**Due to relatively few youth referred to these types of placements, the Other Residential Subtotals may not be the sum of individual placements; this is typically the result of rounding errors and the method by which ADP is calculated.*

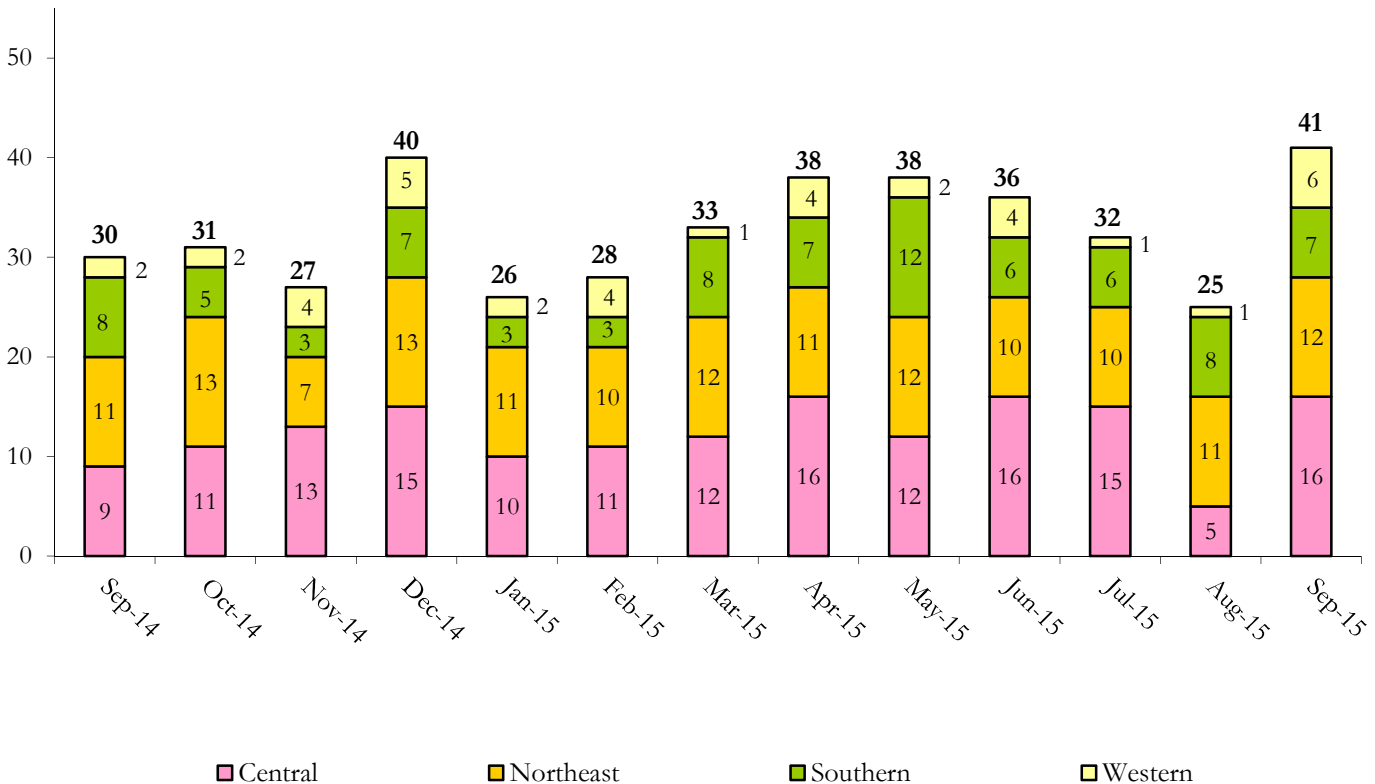
September 2015 DYC Population Report

IV. Commitment ADP and New Commitments

COMMITMENT ADP				
Region	Monthly		YTD	
	September	% Change	September	% Change from Prior FY
Central Region	313.4	3.2%	309.4	-5.3%
Northeast Region	198.5	-0.1%	197.2	-2.4%
Southern Region	154.3	2.4%	153.2	-7.6%
Western Region	61.4	-3.4%	65.1	-11.2%
Commitment ADP	727.6	1.5%	725.0	-5.6%

NEW COMMITMENTS					
	FY 15-16		FY 14-15		% Change from last YTD
	September	YTD	September	YTD	
Central Region	16	36	9	39	-7.7%
Northeast Region	12	33	11	36	-8.3%
Southern Region	7	22	8	19	15.8%
Western Region	6	9	2	8	12.5%
TOTAL	41	100	30	102	-2.0%

Monthly New Commitments



September 2015 DYC Population Report

V. Parole Services

PAROLE ADP				
Region	Monthly	YTD		% Change from prev YTD
		FY 15-16	FY 14-15	
Central Region	97.5	96.1	103.1	-6.8%
Northeast Region	68.3	66.3	68.3	-2.9%
Southern Region	47.2	51.2	37.9	35.2%
Western Region	26.5	28.4	34.5	-17.7%
Total	239.5	242.0	243.8	-0.7%

Region	Parole Intakes		Parole Discharges		LOS
	Monthly	YTD	Monthly	YTD	
Central Region	8	34	5	33	7.4
Northeast Region	6	26	9	22	6.3
Southern Region	4	14	7	31	8.6
Western Region	1	10	9	16	7.1
Total	19	84	30	102	7.4

