

August 2015 FY 2015-2016 MONTHLY POPULATION REPORT

Prepared by the Division of Youth Corrections (DYC)
Research and Evaluation Unit
September 23, 2015



COLORADO

**Office of Children,
Youth & Families**

Division of Youth Corrections

August 2015 DYC Population Report

I. Summary Population Data	1
II. Detention ADP by Facility	2
III. Commitment Services	
A. State and Contract ADP by Facility	3
B. Community/Other Residential ADP by Facility	4
IV. Commitment ADP and New Commitments by Region	5
V. Parole Services	6



August 2015 DYC Population Report

I. Summary Population Data*

DETAINED YOUTH

	August 2015		YTD	
	ADP	% change	ADP	LOS
State-Operated	279.2	0.5%	278.4	15.2 days
Contracted Staff Secure	6.0	-16.2%	6.6	19.4 days
Total Detained	285.2	0.0%	285.0	15.1 days

COMMITTED YOUTH

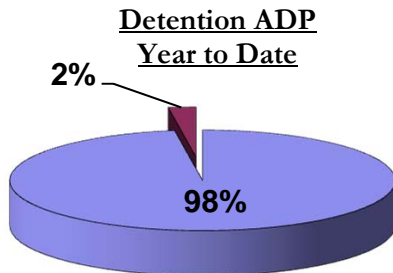
	August 2015		YTD	
	ADP	% change	ADP	LOS
Secure	380.1	-2.8%	385.5	10.0 months
Staff Supervised	244.9	4.2%	239.9	11.3 months
Community Residential	81.3	-7.6%	84.6	6.4 months
Other Residential	10.4	-27.4%	18.6	0.7 months
Total Committed Residential	716.6	-1.6%	728.6	19.5 months
<i>Committed Residential w/o Boulder</i>	<i>712.8</i>	<i>-1.6%</i>	<i>724.8</i>	-

PAROLE YOUTH

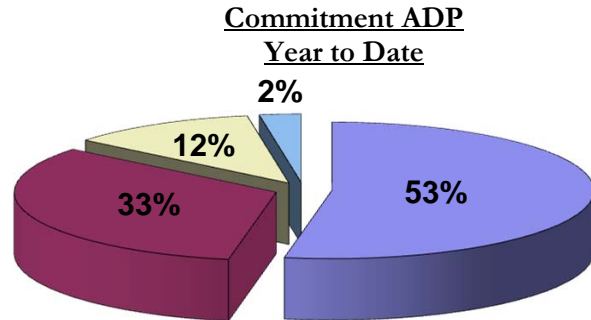
	August 2015		YTD	
	ADP	% change	ADP	LOS
Parole	242.1	-1.2%	243.9	6.8 months

TOTAL STATEWIDE ADP

	August 2015		YTD	
	ADP	% change	ADP	LOS
DETENTION	285.2	0.0%	285.0	15.1 days
COMMITMENT	716.6	-1.6%	728.6	19.5 months
PAROLE	242.1	-1.2%	243.9	6.8 months
STATE TOTAL	1,243.9	-1.1%	1,257.6	N/A



■ State-Operated ■ Contracted Staff Secure



■ Secure ■ Staff Supervised ■ Community Residential ■ Other Residential

*Due to rounding, totals may not add to 100%.

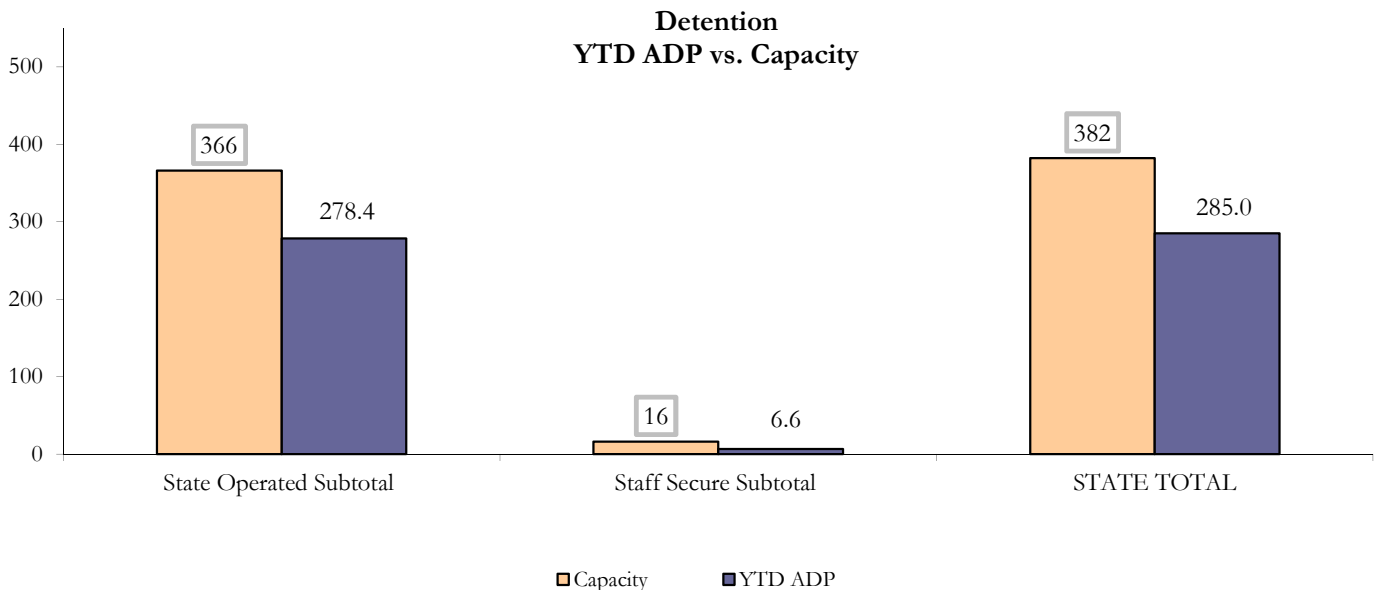
August 2015 DYC Population Report

II. Detention ADP by Facility

State Operated Detention							
Facility	Operating Capacity	Average Daily Population			New Admissions		LOS (days)
		Monthly	YTD	YTD % of Cap	Monthly	YTD	YTD
Adams	30	26.5	26.2	87.4%	48	87	12.7
Gilliam	64	56.7	57.4	89.6%	82	176	16.6
Grand Mesa	27	19.4	18.4	68.2%	34	68	15.1
Marvin Foote	61	42.8	41.9	68.6%	108	189	13.0
Mount View	41	27.2	26.4	64.4%	58	109	13.9
Platte Valley	64	44.2	48.0	75.0%	113	218	15.3
Pueblo	28	23.0	22.5	80.5%	59	106	13.2
Spring Creek	51	39.4	37.7	73.9%	72	138	19.8
State Subtotal	366	279.2	278.4	76.1%	574	1,091	15.1

Staff Secure Detention							
Facility	Operating Capacity	Average Daily Population			New Admissions		LOS (days)
		Monthly	YTD	YTD % of Cap	Monthly	YTD	YTD
Brown Center	3	2.3	2.0	67.8%	2	4	9.4
Robert DeNier	9	2.9	3.1	34.2%	5	11	11.1
Youthtrack San Luis Valley	4	0.8	1.5	36.3%	1	4	16.6
Staff Secure Subtotal	16	6.0	6.6	41.0%	8	19	12.3

STATEWIDE TOTAL							
	Operating Capacity	Average Daily Population			New Admissions		LOS (days)
		Monthly	YTD	YTD % of Cap	Monthly	YTD	YTD
Total Detention	382	285.2	285.0	74.6%	582	1,110	15.1



August 2015 DYC Population Report

III. Commitment Services

A. State and Contract ADP by Facility

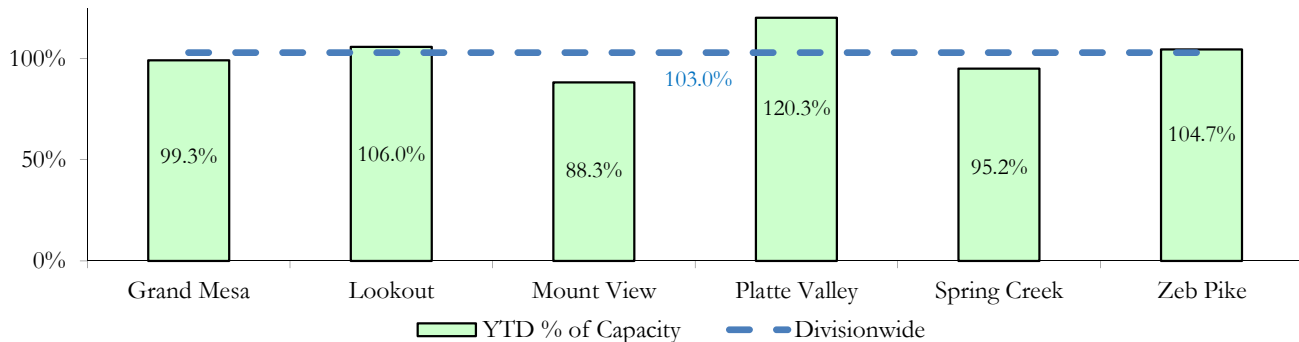
STATE SECURE					
Facility		ADP		Capacity	
		State Secure		Design	
		Monthly	YTD	Capacity	% of YTD
	<i>Adams*</i>	0.0	0.1	-	-
	<i>Gilliam*</i>	0.7	0.4	-	-
	Grand Mesa	35.5	39.7	40	99.3%
	Lookout	137.8	137.9	130	106.0%
	<i>Marvin Foote*</i>	0.4	0.6	-	-
	Mount View	55.4	56.5	64	88.3%
	Platte Valley	45.7	46.9	39	120.3%
	<i>Pueblo*</i>	0.6	0.7	-	-
	Spring Creek	28.2	27.6	29	95.2%
	Zeb Pike	37.5	37.7	36	104.7%
	Assessment Total	24.2	27.1	-	
	Secure Total	317.6	321.0	-	
	STATE SECURE TOTAL	341.8	348.1	338	103.0%

**Detention only facilities with commitment ADP due to committed youth being held in detention prior to transfer.*

CONTRACT: PRIVATE SECURE + STAFF SUPERVISED

Facility/Program	ADP	
	Monthly	YTD
(Private Secure) Betty K. Marler Center	28.5	28.3
(Private Secure) Robert DeNier	9.8	9.1
Alternative Homes For Youth - Greeley	15.1	15.7
Devereux Cleo Wallace	2.4	2.7
Gateway Residential Program - Delta	3.3	3.7
Hilltop (Residential Youth Services)	3.0	3.3
Jefferson Hills - Aurora	54.9	53.4
Ridge View	149.4	143.6
Southern Peaks	6.2	5.6
Third Way Center - Lowry	10.6	11.9
<i>Private Secure & Staff Supervised Subtotal</i>	283.2	277.4

**State Secure Commitment
Percent of Design Capacity by Facility**



August 2015 DYC Population Report

III. Commitment Services Continued

B. Community/Other Residential ADP by Facility

COMMUNITY RESIDENTIAL		
	<i>Monthly</i>	<i>YTD</i>
Attention Homes, Chase House	0.1	0.1
Community Corrections: Comcor	0.0	0.2
Dale House Project	10.1	9.5
Denver Area Youth Services (DAYS)	0.5	0.7
Gateway Residential Program - Grand Junction	0.3	0.6
Griffith Centers for Children, Inc.	8.0	8.5
Job Corps	4.6	4.3
Kids Crossing	2.0	2.0
Maple Star	1.0	1.0
Mt Evans Qualifying House	8.6	9.5
Savio House	1.0	1.0
Synergy Administration	5.5	5.1
Third Way Center, Bannock	4.3	4.8
Third Way Center, Pontiac	6.4	6.9
Third Way Center, York	4.2	4.7
Third Way Center, Lincoln	8.2	8.0
Turning Point Center, Prospect	2.0	2.5
Turning Point, Mathews St.	6.2	6.8
Whimspire Child Placement	1.0	0.6
Youthtrack, San Luis Valley	1.9	2.3
Youthtrack, Work and Learn	5.3	5.2
<i>Community Subtotal</i>	<i>81.3</i>	<i>84.6</i>
<i>Private Secure + Staff Supervised + Community Subtotal</i>	<i>364.4</i>	<i>362.0</i>
OTHER RESIDENTIAL		
	<i>Monthly</i>	<i>YTD</i>
Hospital	0.0	0.1
Job Corps Parole Program (Federally funded)	2.5	2.8
Other Mental Health Facility	1.0	1.0
Residential Mental Health Program	2.4	2.7
Residential Work Program	0.2	0.1
Shelter Care (short term)	0.0	0.7
<i>Other Residential Subtotal*</i>	<i>10.4</i>	<i>18.6</i>
RESIDENTIAL TOTAL	716.6	722.4

**Due to relatively few youth referred to these types of placements, the Other Residential Subtotals may not be the sum of individual placements; this is typically the result of rounding errors and the method by which ADP is calculated.*

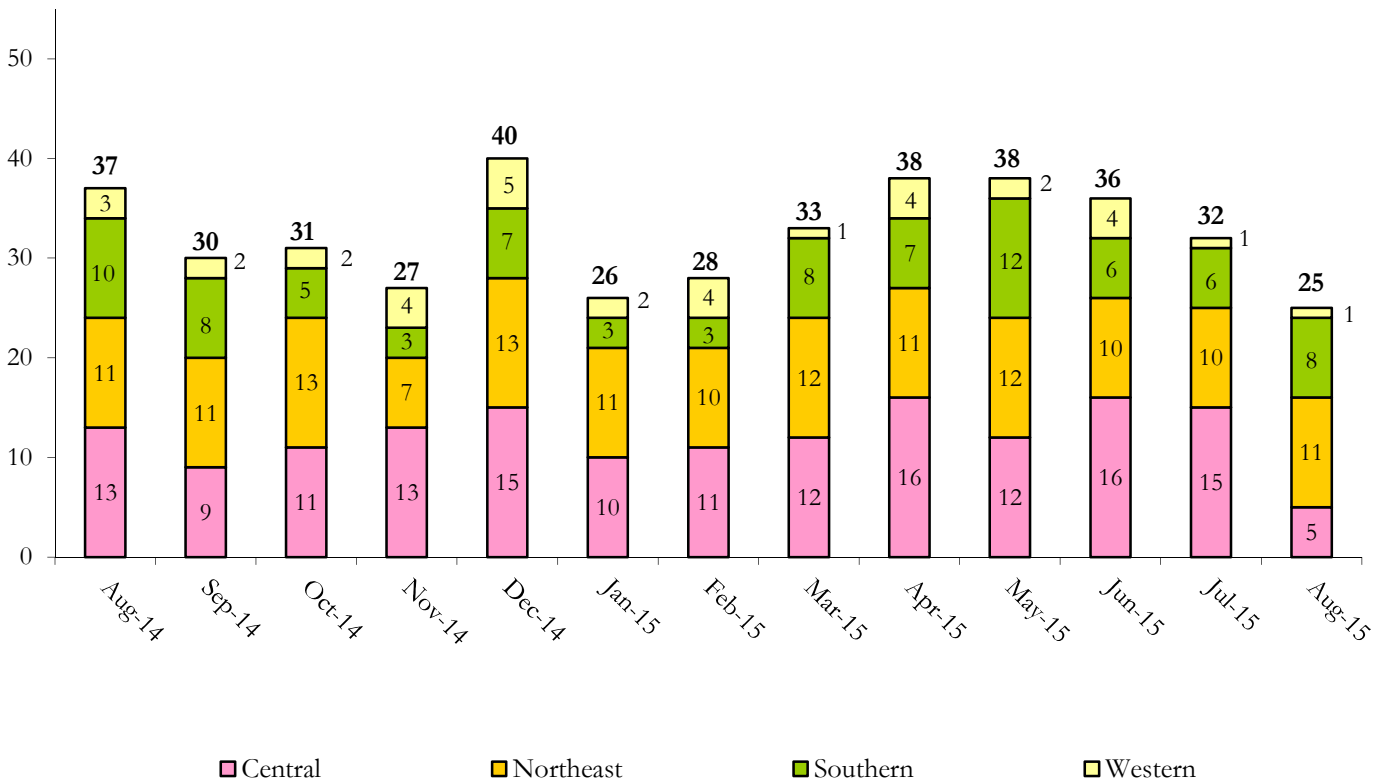
August 2015 DYC Population Report

IV. Commitment ADP and New Commitments

COMMITMENT ADP				
Region	Monthly		YTD	
	August	% Change	August	% Change from Prior FY
Central Region	303.8	-1.7%	306.5	-7.4%
Northeast Region	198.6	1.9%	196.8	-2.6%
Southern Region	150.7	0.1%	150.5	-9.3%
Western Region	63.5	-13.7%	68.6	-4.7%
Commitment ADP	716.6	-1.6%	722.4	-6.3%

NEW COMMITMENTS					
	FY 15-16		FY 14-15		% Change from last YTD
	August	YTD	August	YTD	
Central Region	5	20	13	31	-35.5%
Northeast Region	11	21	11	26	-19.2%
Southern Region	8	14	10	11	27.3%
Western Region	1	2	3	4	-50.0%
TOTAL	25	57	37	72	-20.8%

Monthly New Commitments



August 2015 DYC Population Report

V. Parole Services

PAROLE ADP

Region	Monthly	YTD		% Change from prev YTD
		FY 15-16	FY 14-15	
Central Region	96.3	95.6	100.2	-4.6%
Northeast Region	65.6	65.6	64.3	2.0%
Southern Region	49.3	53.1	36.8	44.4%
Western Region	30.8	29.6	35.8	-17.2%
Total	242.1	243.9	237.0	2.9%

Region	Parole Intakes		Parole Discharges		LOS
	Monthly	YTD	Monthly	YTD	
Central Region	14	26	8	27	6.9
Northeast Region	11	20	9	12	6.1
Southern Region	6	10	10	24	6.4
Western Region	5	9	6	7	8.3
Total	36	65	33	70	6.8

