

July 2015 FY 2015-2016 MONTHLY POPULATION REPORT

Prepared by the Division of Youth Corrections (DYC)
Research and Evaluation Unit
August 20, 2015



COLORADO

**Office of Children,
Youth & Families**

Division of Youth Corrections

July 2015 DYC Population Report

I. Summary Population Data	1
II. Detention ADP by Facility	2
III. Commitment Services	
A. State and Contract ADP by Facility	3
B. Community/Other Residential ADP by Facility	4
IV. Commitment ADP and New Commitments by Region	5
V. Parole Services	6



July 2015 DYC Population Report

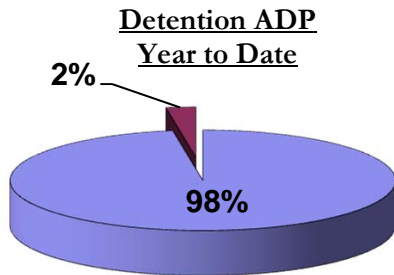
I. Summary Population Data*

DETAINED YOUTH				
	July 2015		YTD	
	ADP	% change	ADP	LOS
State-Operated	277.9	-2.3%	277.9	15.2 days
Contracted Staff Secure	7.1	75.0%	7.1	19.4 days
Total Detained	285.1	-1.2%	285.1	14.4 days

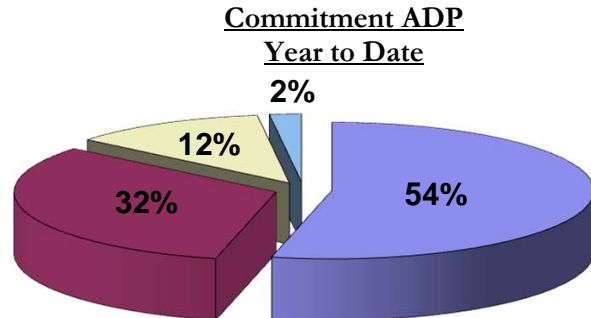
COMMITTED YOUTH				
	July 2015		YTD	
	ADP	% change	ADP	LOS
Secure	390.9	-2.3%	390.9	10.7 months
Staff Supervised	235.0	1.0%	235.0	10.3 months
Community Residential	87.9	-4.4%	87.9	8.1 months
Other Residential	14.3	52.0%	14.3	1.0 months
Total Committed Residential	728.2	-0.8%	728.2	20.3 months
<i>Committed Residential w/o Boulder</i>	<i>724.3</i>	<i>-1.0%</i>	<i>724.3</i>	-

PAROLE YOUTH				
	July 2015		YTD	
	ADP	% change	ADP	LOS
Parole	245.1	0.5%	245.1	6.0 months

TOTAL STATEWIDE ADP				
	July 2015		YTD	
	ADP	% change	ADP	LOS
DETENTION	285.1	-1.2%	285.1	14.4 days
COMMITMENT	728.2	-0.8%	728.2	20.3 months
PAROLE	245.1	0.5%	245.1	6.0 months
STATE TOTAL	1,258.4	-0.6%	1,258.4	N/A



■ State-Operated ■ Contracted Staff Secure



■ Secure ■ Staff Supervised ■ Community Residential ■ Other Residential

*Due to rounding, totals may not add to 100%.

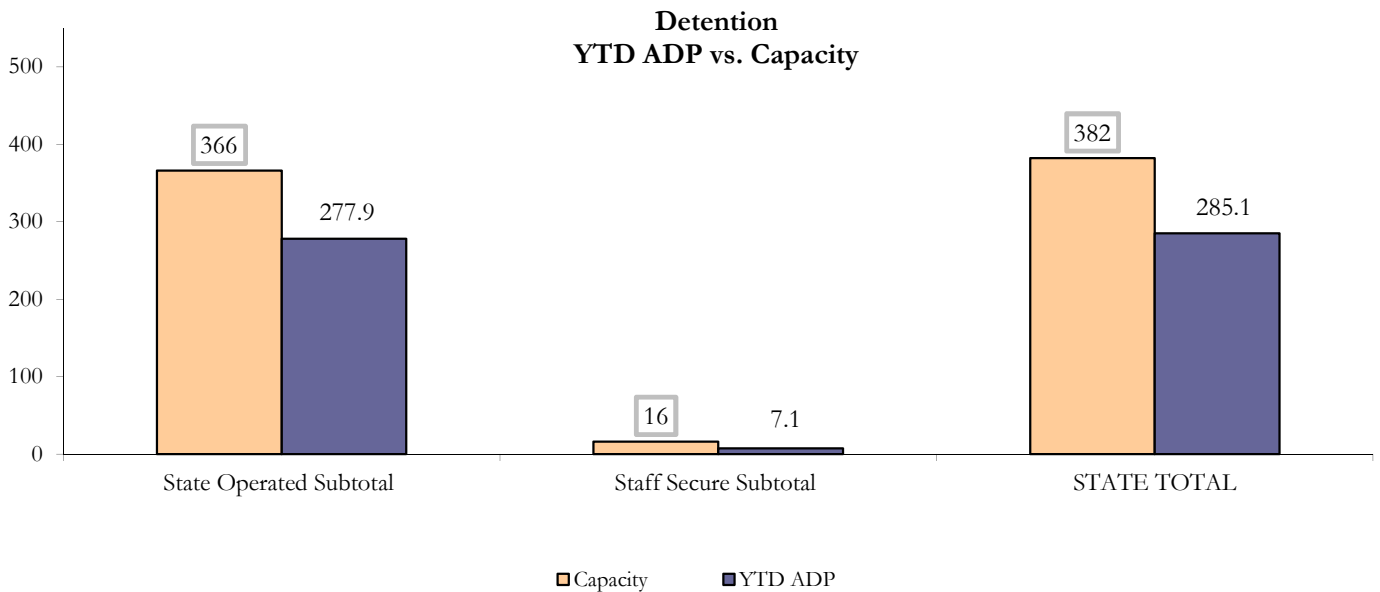
July 2015 DYC Population Report

II. Detention ADP by Facility

State Operated Detention							
Facility	Operating Capacity	Average Daily Population			New Admissions		LOS (days)
		Monthly	YTD	YTD % of Cap	Monthly	YTD	YTD
Adams	30	25.9	25.9	86.3%	39	39	12.2
Gilliam	64	58.1	58.1	90.8%	94	94	16.1
Grand Mesa	27	17.4	17.4	64.4%	34	34	12.2
Marvin Foote	61	41.2	41.2	67.5%	82	82	14.7
Mount View	41	25.7	25.7	62.6%	51	51	14.2
Platte Valley	64	51.8	51.8	80.9%	103	103	12.9
Pueblo	28	22.0	22.0	78.7%	47	47	11.9
Spring Creek	51	35.9	35.9	70.5%	66	66	18.5
State Subtotal	366	277.9	277.9	75.9%	516	516	14.4

Staff Secure Detention							
Facility	Operating Capacity	Average Daily Population			New Admissions		LOS (days)
		Monthly	YTD	YTD % of Cap	Monthly	YTD	YTD
Brown Center	3	1.8	1.8	58.4%	2	2	7.8
Robert DeNier	9	3.3	3.3	36.3%	6	6	7.6
Youthtrack San Luis Valley	4	2.1	2.1	53.2%	3	3	15.1
Staff Secure Subtotal	16	7.1	7.1	44.7%	11	11	10.1

STATEWIDE TOTAL							
	Operating Capacity	Average Daily Population			New Admissions		LOS (days)
		Monthly	YTD	YTD % of Cap	Monthly	YTD	YTD
Total Detention	382	285.1	285.1	74.6%	527	527	14.4



July 2015 DYC Population Report

III. Commitment Services

A. State and Contract ADP by Facility

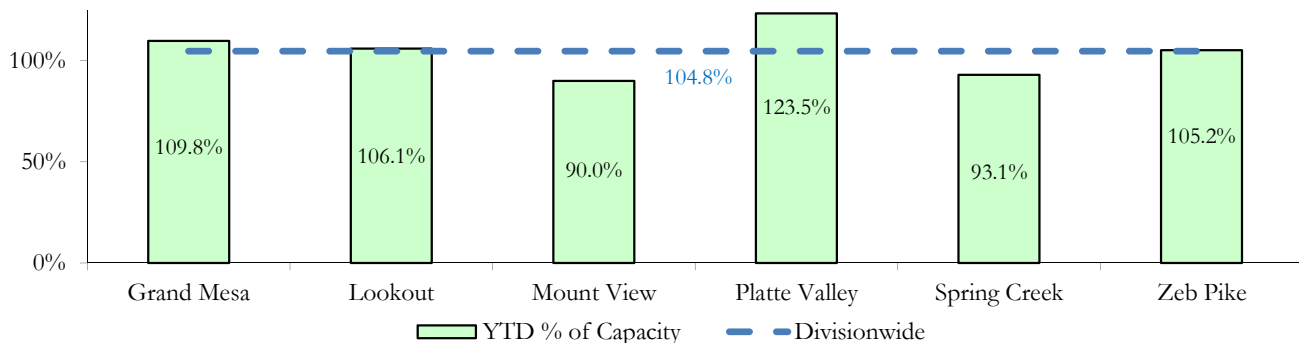
STATE SECURE				
Facility	ADP		Capacity	
	State Secure		Design	
	Monthly	YTD	Capacity	% of YTD
<i>Adams*</i>	0.1	0.1	-	-
<i>Gilliam*</i>	0.1	0.1	-	-
Grand Mesa	43.9	43.9	40	109.8%
Lookout	138.0	138.0	130	106.1%
<i>Marvin Foote*</i>	0.8	0.8	-	-
Mount View	57.6	57.6	64	90.0%
Platte Valley	48.2	48.2	39	123.5%
<i>Pueblo*</i>	0.9	0.9	-	-
Spring Creek	27.0	27.0	29	93.1%
Zeb Pike	37.9	37.9	36	105.2%
Assessment Total	29.7	29.7	-	
Secure Total	324.6	324.6	-	
STATE SECURE TOTAL	354.3	354.3	338	104.8%

**Detention only facilities with commitment ADP due to committed youth being held in detention prior to transfer.*

CONTRACT: PRIVATE SECURE + STAFF SUPERVISED

Facility/Program	ADP	
	Monthly	YTD
(Private Secure) Betty K. Marler Center	28.2	28.2
(Private Secure) Robert DeNier	8.4	8.4
Alternative Homes For Youth - Greeley	16.2	16.2
Children's Ark at Pueblo	0.0	0.0
Devereux Cleo Wallace	3.0	3.0
Gateway Residential Program - Delta	4.1	4.1
Hilltop (Residential Youth Services)	3.5	3.5
Jefferson Hills - Aurora	51.9	51.9
Mountain Crest/Poudre Valley Health System	0.0	0.0
Ridge View	137.9	137.9
Robert Brown Center	0.0	0.0
Southern Peaks	5.1	5.1
Third Way Center - Lowry	13.2	13.2
<i>Private Secure & Staff Supervised Subtotal</i>	271.6	271.6

**State Secure Commitment
Percent of Design Capacity by Facility**



July 2015 DYC Population Report

III. Commitment Services Continued

B. Community/Other Residential ADP by Facility

COMMUNITY RESIDENTIAL		
	<i>Monthly</i>	<i>YTD</i>
Attention Homes, Chase House	0.2	0.2
Community Corrections: Comcor	0.4	0.4
Dale House Project	9.0	9.0
Denver Area Youth Services (DAYS)	0.9	0.9
Gateway Residential Program - Grand Junction	1.0	1.0
Griffith Centers for Children, Inc.	8.9	8.9
Job Corps	4.0	4.0
Kids Crossing	2.0	2.0
Maple Star	1.0	1.0
Mt Evans Qualifying House	10.5	10.5
Savio House	1.0	1.0
Synergy Administration	4.8	4.8
Third Way Center, Bannock	5.3	5.3
Third Way Center, Pontiac	7.4	7.4
Third Way Center, York	5.3	5.3
Third Way Center, Lincoln	7.8	7.8
Turning Point Center, Prospect	3.0	3.0
Turning Point, Mathews St.	7.4	7.4
Whimspire Child Placement	0.2	0.2
Youthtrack, San Luis Valley	2.7	2.7
Youthtrack, Work and Learn	5.1	5.1
<i>Community Subtotal</i>	<i>87.9</i>	<i>87.9</i>
<i>Private Secure + Staff Supervised + Community Subtotal</i>	<i>359.5</i>	<i>359.5</i>
OTHER RESIDENTIAL		
	<i>Monthly</i>	<i>YTD</i>
Hospital	0.2	0.2
Job Corps Parole Program (Federally funded)	3.0	3.0
Other Mental Health Facility	1.0	1.0
Residential Mental Health Program	3.0	3.0
Residential Work Program	0.0	0.0
Shelter Care (short term)	1.3	1.3
<i>Other Residential Subtotal*</i>	<i>14.3</i>	<i>14.3</i>
RESIDENTIAL TOTAL	728.2	728.2

**Due to relatively few youth referred to these types of placements, the Other Residential Subtotals may not be the sum of individual placements; this is typically the result of rounding errors and the method by which ADP is calculated.*

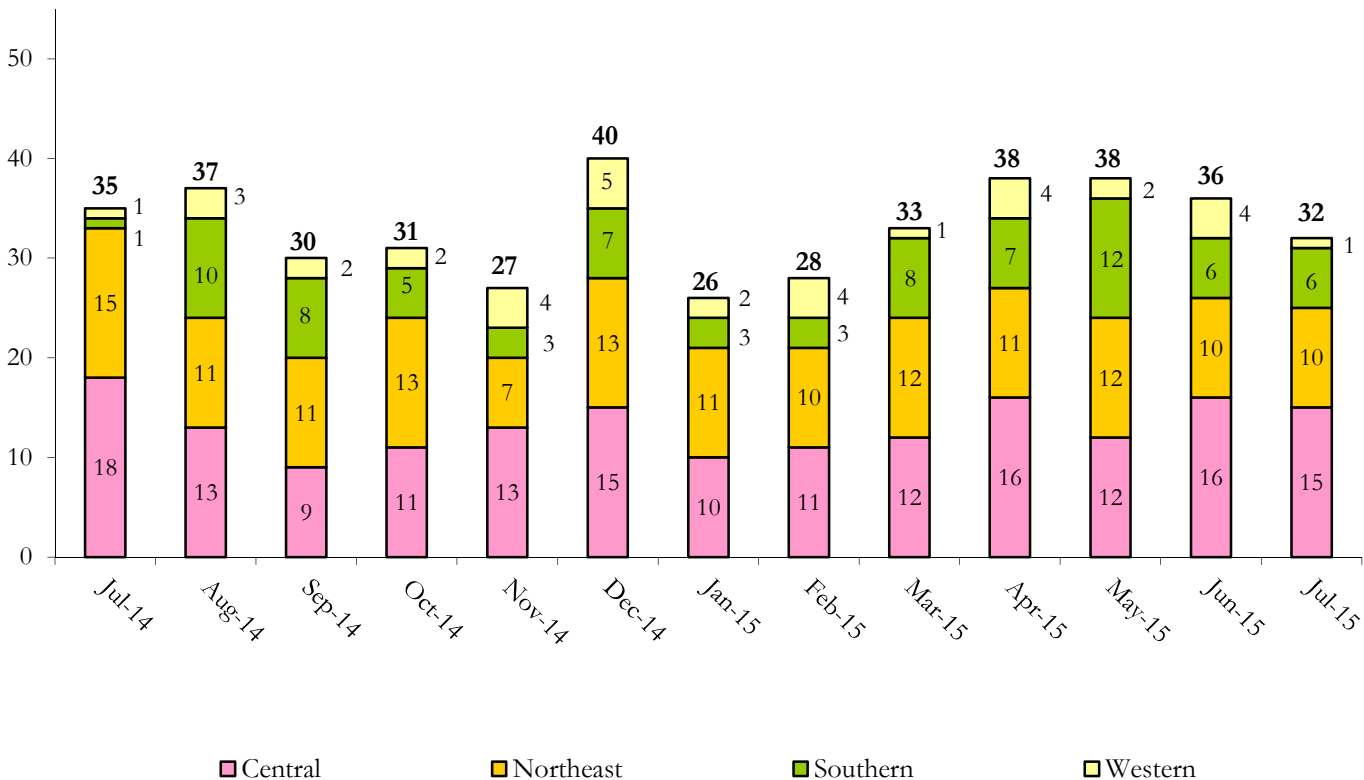
July 2015 DYC Population Report

IV. Commitment ADP and New Commitments

COMMITMENT ADP				
Region	Monthly		YTD	
	July	% Change	July	% Change from Prior FY
Central Region	309.2	0.8%	309.2	-7.3%
Northeast Region	194.9	-0.6%	194.9	-2.8%
Southern Region	150.5	-3.8%	150.5	-11.0%
Western Region	73.6	-1.6%	73.6	3.8%
Commitment ADP	728.2	-0.8%	728.2	-6.0%

NEW COMMITMENTS					
	FY 15-16		FY 14-15		% Change from last YTD
	July	YTD	July	YTD	
Central Region	15	15	18	18	-16.7%
Northeast Region	10	10	15	15	-33.3%
Southern Region	6	6	1	1	500.0%
Western Region	1	1	1	1	0.0%
TOTAL	32	32	35	35	-8.6%

Monthly New Commitments



July 2015 DYC Population Report

V. Parole Services

PAROLE ADP				
Region	Monthly	YTD		% Change from prev YTD
		FY 15-16	FY 14-15	
Central Region	95.8	95.8	101.0	-5.1%
Northeast Region	63.6	63.6	64.1	-0.8%
Southern Region	58.7	58.7	36.8	59.6%
Western Region	27.0	27.0	35.0	-22.8%
Total	245.1	245.1	236.9	3.5%

Region	Parole Intakes		Parole Discharges		LOS
	Monthly	YTD	Monthly	YTD	
Central Region	12	12	19	19	6.0
Northeast Region	9	9	3	3	4.2
Southern Region	5	5	14	14	6.4
Western Region	3	3	1	1	6.0
Total	29	29	37	37	6.0

