

# June 2015 FY 2014-2015 MONTHLY POPULATION REPORT

---

Prepared by the Division of Youth Corrections (DYC)  
Research and Evaluation Unit  
July 17, 2015



**COLORADO**

**Office of Children,  
Youth & Families**

Division of Youth Corrections

# June 2015 DYC Population Report

<b>I. Summary Population Data</b>	<b>1</b>
<b>II. Detention ADP by Facility</b>	<b>2</b>
<b>III. Commitment Services</b>	
A. State and Contract ADP by Facility	3
B. Community/Other Residential ADP by Facility	4
<b>IV. Commitment ADP and New Commitments by Region</b>	<b>5</b>
<b>V. Parole Services</b>	<b>6</b>



# June 2015 DYC Population Report

## I. Summary Population Data\*

### DETAINED YOUTH

	June 2015		YTD	
	ADP	% change	ADP	LOS
State-Operated	284.3	1.7%	275.0	15.2 days
Contracted Staff Secure	4.1	-28.0%	6.8	19.4 days
<b>Total Detained</b>	<b>288.4</b>	<b>1.1%</b>	<b>281.8</b>	<b>14.6 days</b>

### COMMITTED YOUTH

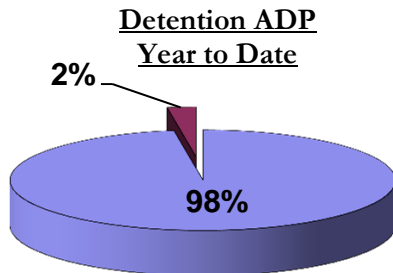
	June 2015		YTD	
	ADP	% change	ADP	LOS
Secure	399.9	1.4%	382.8	10.6 months
Staff Supervised	232.8	-3.1%	258.7	10.3 months
Community Residential	91.9	1.8%	89.8	6.2 months
Other Residential	9.4	12.2%	8.6	2.4 months
<b>Total Committed Residential</b>	<b>734.1</b>	<b>0.1%</b>	<b>740.0</b>	<b>20.3 months</b>
<i>Committed Residential w/o Boulder</i>	<i>731.2</i>	<i>0.1%</i>	<i>736.7</i>	<i>-</i>

### PAROLE YOUTH

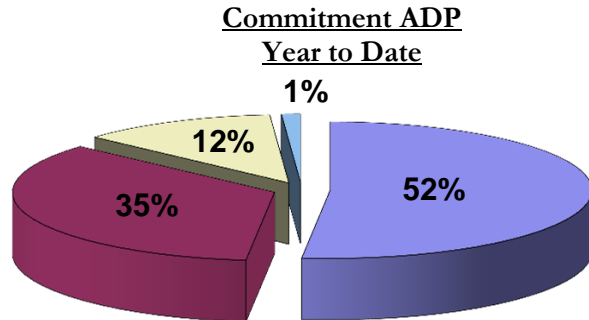
	June 2015		YTD	
	ADP	% change	ADP	LOS
Parole	243.8	2.4%	245.6	6.6 months

### TOTAL STATEWIDE ADP

	June 2015		YTD	
	ADP	% change	ADP	LOS
DETENTION	288.4	1.1%	281.8	14.6 days
COMMITMENT	734.1	0.1%	740.0	20.3 months
PAROLE	243.8	2.4%	245.6	6.6 months
<b>STATE TOTAL</b>	<b>1,266.3</b>	<b>0.8%</b>	<b>1,267.4</b>	<b>N/A</b>



■ State-Operated ■ Contracted Staff Secure



■ Secure ■ Staff Supervised ■ Community Residential ■ Other Residential

\*Due to rounding, totals may not add to 100%.

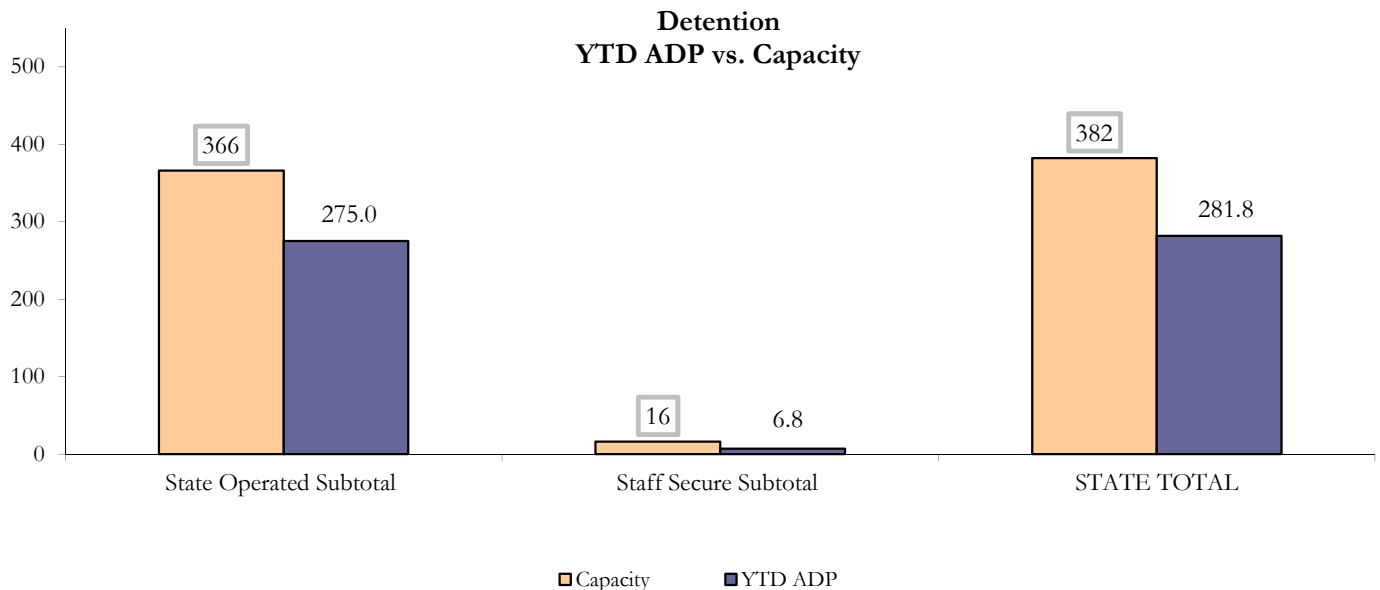
# June 2015 DYC Population Report

## II. Detention ADP by Facility

State Operated Detention							
Facility	Operating Capacity	Average Daily Population			New Admissions		LOS (days)
		Monthly	YTD	YTD % of Cap	Monthly	YTD	YTD
Adams	30	20.2	22.0	73.5%	54	549	15.3
Gilliam	64	60.6	53.4	83.4%	103	1,124	17.8
Grand Mesa	27	13.4	17.2	63.8%	23	326	16.9
Marvin Foote	61	43.6	47.3	77.6%	86	1,240	13.8
Mount View	41	30.9	29.0	70.7%	60	735	14.2
Platte Valley	64	57.4	50.9	79.5%	118	1,501	12.2
Pueblo	28	19.5	18.3	65.3%	61	607	12.5
Spring Creek	51	38.7	37.0	72.5%	61	795	16.4
<b>State Subtotal</b>	<b>366</b>	<b>284.3</b>	<b>275.0</b>	<b>75.1%</b>	<b>566</b>	<b>6,877</b>	<b>14.6</b>

Staff Secure Detention							
Facility	Operating Capacity	Average Daily Population			New Admissions		LOS (days)
		Monthly	YTD	YTD % of Cap	Monthly	YTD	YTD
Brown Center	3	1.0	1.5	50.3%	1	17	31.0
Robert DeNier	9	2.2	4.0	44.0%	9	82	17.8
Youthtrack San Luis Valley	4	0.9	1.3	33.1%	4	48	10.3
<b>Staff Secure Subtotal</b>	<b>16</b>	<b>4.1</b>	<b>6.8</b>	<b>42.4%</b>	<b>14</b>	<b>147</b>	<b>16.9</b>

STATEWIDE TOTAL							
	Operating Capacity	Average Daily Population			New Admissions		LOS (days)
		Monthly	YTD	YTD % of Cap	Monthly	YTD	YTD
<b>Total Detention</b>	<b>382</b>	<b>288.4</b>	<b>281.8</b>	<b>73.8%</b>	<b>580</b>	<b>7,024</b>	<b>14.6</b>



# June 2015 DYC Population Report

## III. Commitment Services

### A. State and Contract ADP by Facility

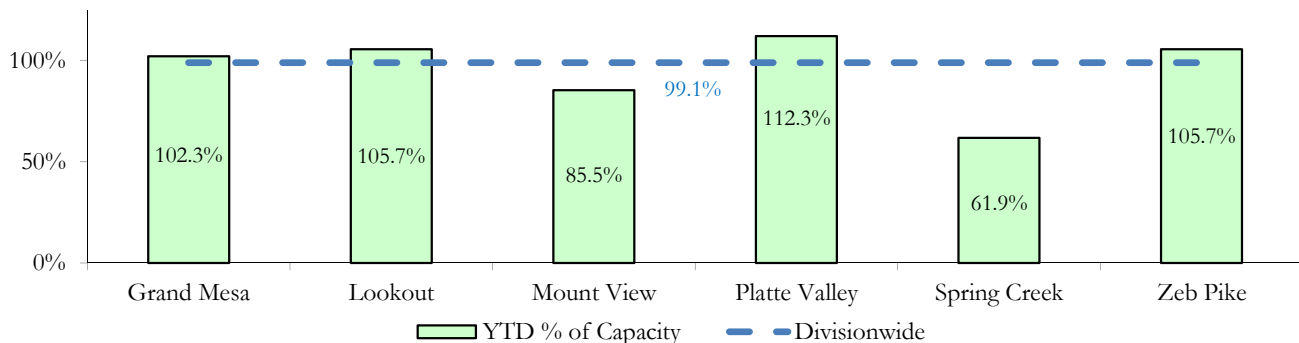
STATE SECURE				
Facility	ADP		Capacity	
	State Secure		Design	
	Monthly	YTD	Capacity	% of YTD
<i>Adams*</i>	0.6	0.3	-	-
<i>Gilliam*</i>	0.0	0.2	-	-
Grand Mesa	45.5	40.9	40	102.3%
Lookout	136.7	137.4	130	105.7%
<i>Marvin Foote*</i>	0.2	1.0	-	-
Mount View	67.2	54.7	64	85.5%
Platte Valley	47.0	43.8	39	112.3%
<i>Pueblo*</i>	0.4	0.5	-	-
Spring Creek	26.6	18.0	29	61.9%
Zeb Pike	37.1	38.0	36	105.7%
<b>Assessment Total</b>	<b>33.4</b>	<b>29.5</b>	-	
<b>Secure Total</b>	<b>327.9</b>	<b>305.4</b>	-	
<b>STATE SECURE TOTAL</b>	<b>361.3</b>	<b>334.9</b>	<b>338</b>	<b>99.1%</b>

*\*Detention only facilities with commitment ADP due to committed youth being held in detention prior to transfer.*

### CONTRACT: PRIVATE SECURE + STAFF SUPERVISED

Facility/Program	ADP	
	Monthly	YTD
(Private Secure) Betty K. Marler Center	30.1	37.7
(Private Secure) Robert DeNier	8.6	10.3
Alternative Homes For Youth - Greeley	16.9	16.8
Children's Ark at Pueblo	0.0	2.4
Devereux Cleo Wallace	2.2	12.1
Gateway Residential Program - Delta	4.0	3.0
Hilltop (Residential Youth Services)	4.6	5.8
Jefferson Hills - Aurora	51.0	45.6
Mountain Crest/Poudre Valley Health System	1.0	6.9
Ridge View	136.9	147.8
Robert Brown Center	0.0	1.2
Southern Peaks	3.3	4.9
Third Way Center - Lowry	12.8	12.1
<i>Private Secure &amp; Staff Supervised Subtotal</i>	<b>271.4</b>	<b>306.7</b>

**State Secure Commitment  
Percent of Design Capacity by Facility**



# June 2015 DYC Population Report

## III. Commitment Services Continued

### B. Community/Other Residential ADP by Facility

<b>COMMUNITY RESIDENTIAL</b>		
	<i>Monthly</i>	<i>YTD</i>
Community Corrections: Comcor	1.0	0.3
Community Corrections: Mesa County	0.0	0.7
Dale House Project	10.3	7.8
Denver Area Youth Services (DAYS)	1.0	1.2
Gateway Residential Program - Grand Junction	1.7	0.6
Griffith Centers (SR)	6.9	6.7
Hilltop (Independent Living)	0.7	0.2
Job Corps	6.0	3.1
Kids Crossing	1.4	1.7
Mt Evans Qualifying House	10.6	11.5
Savio House	1.0	0.13
Summit Treatment Service, Inc	0.1	7.6
Synergy Administration	4.4	3.5
Third Way Center, Bannock	4.2	4.3
Third Way Center, Pontiac	7.7	7.3
Third Way Center, York	5.7	6.6
Third Way Center, Lincoln	6.8	7.0
Turning Point Center, Prospect	3.4	3.8
Turning Point, Mathews St.	10.2	7.9
Youthtrack, San Luis Valley	2.9	1.7
Youthtrack, Work and Learn	6.1	6.0
<i>Community Subtotal</i>	<i>91.9</i>	<i>89.8</i>
<b><i>Private Secure + Staff Supervised + Community Subtotal</i></b>	<b><i>363.4</i></b>	<b><i>396.5</i></b>
<b>OTHER RESIDENTIAL</b>		
	<i>Monthly</i>	<i>YTD</i>
CMHI-Pueblo	0.0	0.02
CMHI-Pueblo	0.0	0.02
Hospital	0.2	0.1
Immigration Detention Facility	0.5	0.2
Job Corps Parole Program (Federally funded)	0.7	2.0
Other Mental Health Facility	0.0	0.02
Residential Drug/Alcohol Program	0.0	0.1
Residential Mental Health Program	3.0	2.2
Residential Work Program	0.0	0.2
Shelter Care (short term)	0.7	1.3
<i>Other Residential Subtotal*</i>	<i>9.4</i>	<i>8.6</i>
<b>RESIDENTIAL TOTAL</b>	<b>734.1</b>	<b>740.0</b>

*\*Due to relatively few youth referred to these types of placements, the Other Residential Subtotals may not be the sum of individual placements; this is typically the result of rounding errors and the method by which ADP is calculated.*

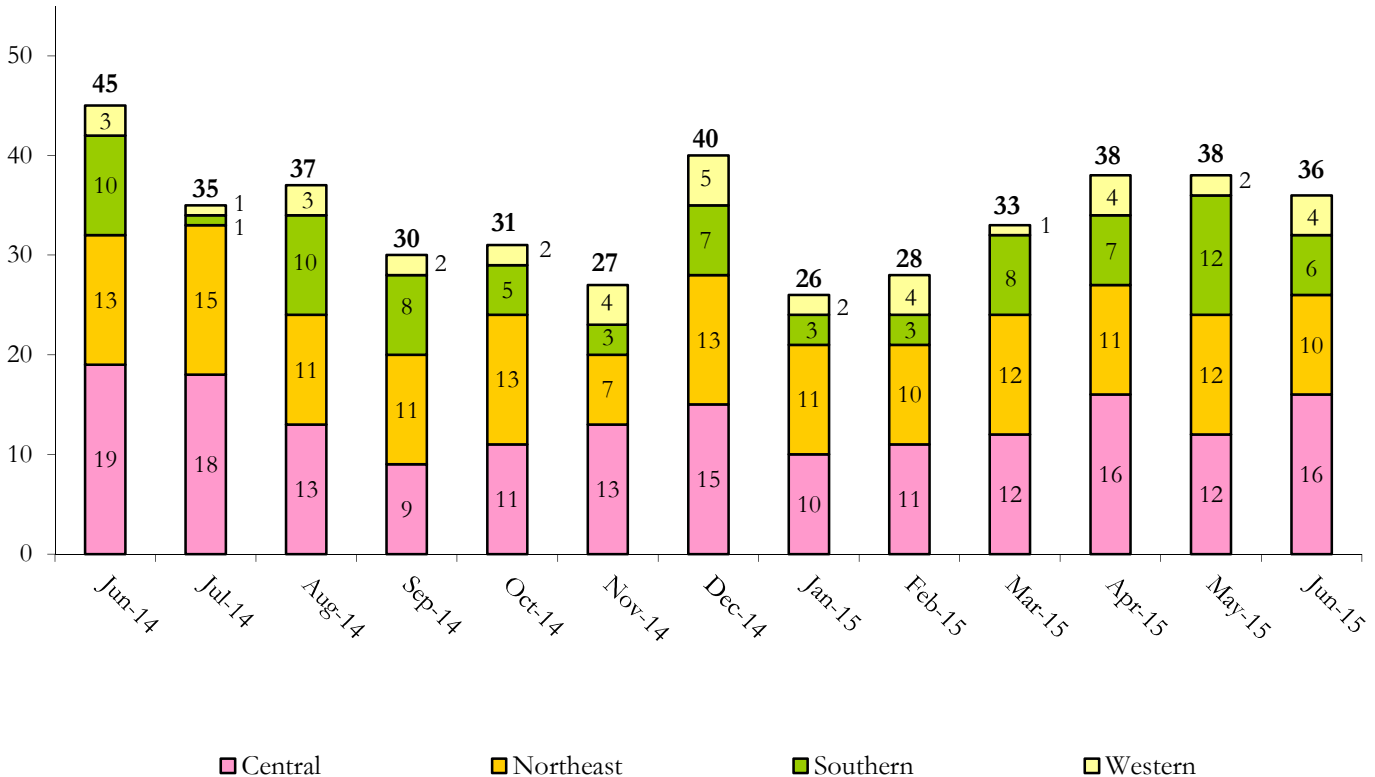
# June 2015 DYC Population Report

## IV. Commitment ADP and New Commitments

COMMITMENT ADP				
Region	Monthly		YTD	
	June	% Change	June	% Change from Prior FY
Central Region	306.7	-1.4%	313.5	-8.6%
Northeast Region	196.1	0.4%	199.6	-1.9%
Southern Region	156.4	-0.5%	156.7	-1.1%
Western Region	74.8	7.5%	70.2	-24.0%
<b>Commitment ADP</b>	<b>734.1</b>	<b>0.1%</b>	<b>740.0</b>	<b>-7.2%</b>

NEW COMMITMENTS					
	FY 14-15		FY 13-14		% Change from last YTD
	June	YTD	June	YTD	
Central Region	16	158	19	185	-14.6%
Northeast Region	10	137	13	145	-5.5%
Southern Region	6	76	10	102	-25.5%
Western Region	4	39	3	42	-7.1%
<b>TOTAL</b>	<b>36</b>	<b>410</b>	<b>45</b>	<b>474</b>	<b>-13.5%</b>

### Monthly New Commitments



# June 2015 DYC Population Report

## V. Parole Services

PAROLE ADP				
Region	Monthly	YTD		% Change from prev YTD
		FY 14-15	FY 13-14	
Central Region	98.6	100.6	114.9	-12.5%
Northeast Region	63.2	73.8	82.4	-10.4%
Southern Region	55.5	43.9	53.8	-18.4%
Western Region	26.5	27.4	30.3	-9.5%
<b>Total</b>	<b>243.8</b>	<b>245.6</b>	<b>281.3</b>	<b>-12.7%</b>

Region	Parole Intakes		Parole Discharges		LOS
	Monthly	YTD	Monthly	YTD	
Central Region	11	171	9	190	6.9
Northeast Region	5	132	14	145	6.5
Southern Region	8	85	3	77	6.3
Western Region	5	45	2	57	5.9
<b>Total</b>	<b>29</b>	<b>433</b>	<b>28</b>	<b>469</b>	<b>6.6</b>

