

May 2015 FY 2014-2015 MONTHLY POPULATION REPORT

Prepared by the Division of Youth Corrections (DYC)
Research and Evaluation Unit
June 18, 2015



COLORADO

**Office of Children,
Youth & Families**

Division of Youth Corrections

May 2015 DYC Population Report

I. Summary Population Data	1
II. Detention ADP by Facility	2
III. Commitment Services	
A. State and Contract ADP by Facility	3
B. Community/Other Residential ADP by Facility	4
IV. Commitment ADP and New Commitments by Region	5
V. Parole Services	6



May 2015 DYC Population Report

I. Summary Population Data*

DETAINED YOUTH

	May 2015		YTD	
	ADP	% change	ADP	LOS
State-Operated	279.6	1.4%	275.0	15.2 days
Contracted Staff Secure	5.7	-26.3%	7.0	19.4 days
Total Detained	285.3	0.6%	282.0	14.7 days

COMMITTED YOUTH

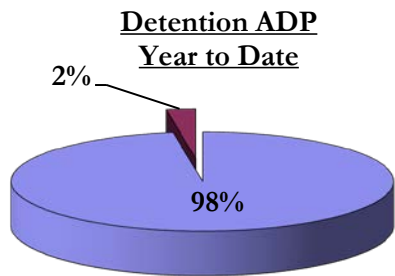
	May 2015		YTD	
	ADP	% change	ADP	LOS
Secure	394.4	2.4%	381.4	10.7 months
Staff Supervised	240.1	0.0%	261.0	10.2 months
Community Residential	90.3	2.6%	89.7	6.2 months
Other Residential	8.4	91.5%	8.5	2.4 months
Total Committed Residential	733.2	2.2%	740.7	20.4 months
<i>Committed Residential w/o Boulder</i>	<i>730.2</i>	<i>2.2%</i>	<i>737.3</i>	<i>-</i>

PAROLE YOUTH

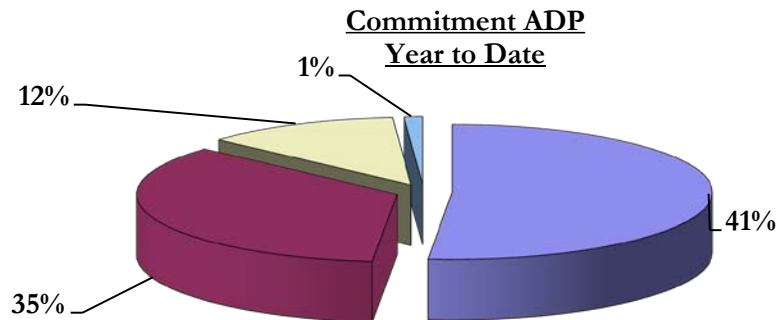
	May 2015		YTD	
	ADP	% change	ADP	LOS
Parole	238.2	-3.3%	245.2	6.6 months

TOTAL STATEWIDE ADP

	May 2015		YTD	
	ADP	% change	ADP	LOS
DETENTION	285.3	0.6%	282.0	14.7 days
COMMITMENT	733.2	2.2%	740.7	20.4 months
PAROLE	238.2	-3.3%	245.2	6.6 months
STATE TOTAL	1,256.6	0.7%	1,267.9	N/A



■ State-Operated ■ Contracted Staff Secure



■ Secure ■ Staff Supervised ■ Community Residential ■ Other Residential

*Due to rounding, totals may not add to 100%.

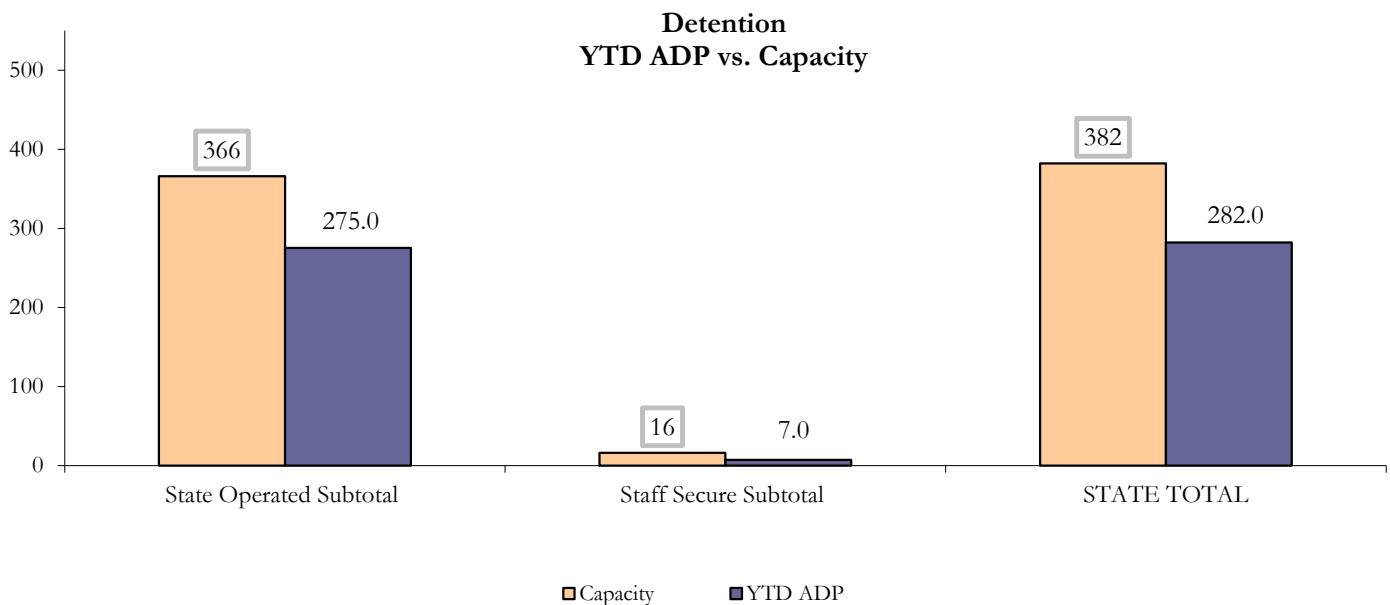
May 2015 DYC Population Report

II. Detention ADP by Facility

State Operated Detention							
Facility	Operating Capacity	Average Daily Population			New Admissions		LOS (days)
		Monthly	YTD	YTD % of Cap	Monthly	YTD	YTD
Adams	30	22.6	22.2	74.0%	43	495	15.6
Gilliam	64	53.7	52.7	82.4%	97	1,021	17.9
Grand Mesa	27	18.2	17.6	65.1%	34	303	16.9
Marvin Foote	61	46.5	48.5	79.5%	91	1,155	13.8
Mount View	41	31.7	28.8	70.2%	59	675	14.3
Platte Valley	64	51.2	50.2	78.5%	126	1,384	11.9
Pueblo	28	19.8	18.2	65.0%	63	546	12.9
Spring Creek	51	35.8	36.8	72.2%	58	734	16.3
State Subtotal	366	279.6	275.0	75.1%	571	6,313	14.6

Staff Secure Detention							
Facility	Operating Capacity	Average Daily Population			New Admissions		LOS (days)
		Monthly	YTD	YTD % of Cap	Monthly	YTD	YTD
Brown Center	3	2.2	1.6	51.8%	2	16	31.0
Robert DeNier	9	2.5	4.1	45.3%	3	73	18.6
Youthtrack San Luis Valley	4	1.0	1.4	34.1%	1	44	9.8
Staff Secure Subtotal	16	5.7	7.0	43.7%	6	133	17.2

STATEWIDE TOTAL							
	Operating Capacity	Average Daily Population			New Admissions		LOS (days)
		Monthly	YTD	YTD % of Cap	Monthly	YTD	YTD
Total Detention	382	285.3	282.0	73.8%	577	6,446	14.7



May 2015 DYC Population Report

III. Commitment Services

A. State and Contract ADP by Facility

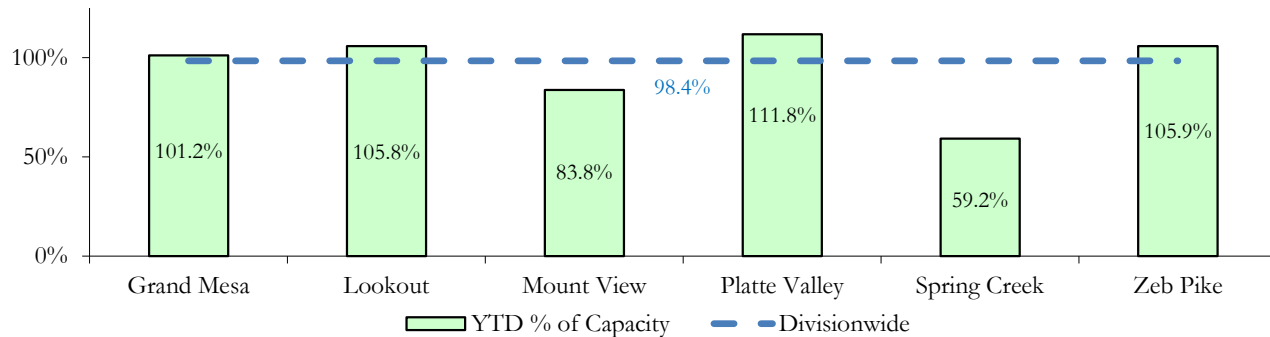
STATE SECURE					
Facility		ADP		Capacity	
		State Secure		Design	
		Monthly	YTD	Capacity	% of YTD
	<i>Adams*</i>	0.4	0.3	-	-
	<i>Gilliam*</i>	0.2	0.3	-	-
	Grand Mesa	43.1	40.5	40	101.2%
	Lookout	137.2	137.5	130	105.8%
	<i>Marvin Foote*</i>	0.7	1.0	-	-
	Mount View*	60.6	53.6	64	83.8%
	Platte Valley	42.6	43.6	39	111.8%
	<i>Pueblo*</i>	0.3	0.5	-	-
	Spring Creek	25.9	17.2	29	59.2%
	Zeb Pike	37.6	38.1	36	105.9%
	Assessment Total	33.2	29.2	-	
	Secure Total	315.4	303.4	-	
	STATE SECURE TOTAL	348.6	332.6	338	98.4%

**Detention only facilities with commitment ADP due to committed youth being held in detention prior to transfer.*

CONTRACT: PRIVATE SECURE + STAFF SUPERVISED

Facility/Program	ADP	
	Monthly	YTD
(Private Secure) Betty K. Marler Center	36.4	38.4
(Private Secure) Robert DeNier	9.4	10.4
Alternative Homes For Youth - Greeley	15.7	16.8
Children's Ark at Pueblo	0.0	2.6
Devereux Cleo Wallace	3.6	13.0
Gateway Residential Program - Delta	3.0	2.9
Hilltop (Residential Youth Services)	5.7	6.0
Jefferson Hills - Aurora	51.7	45.1
Mountain Crest/Poudre Valley Health System	5.4	7.4
Ridge View	139.3	148.8
Robert Brown Center	0.0	1.3
Southern Peaks	3.0	5.1
Third Way Center - Lowry	12.7	12.0
<i>Private Secure & Staff Supervised Subtotal</i>	285.8	309.8

**State Secure Commitment
Percent of Design Capacity by Facility**



May 2015 DYC Population Report

III. Commitment Services Continued

B. Community/Other Residential ADP by Facility

COMMUNITY RESIDENTIAL		
	<i>Monthly</i>	<i>YTD</i>
Community Corrections: Comcor	1.0	0.3
Community Corrections: Mesa County	0.0	0.7
Dale House Project	11.3	7.6
Denver Area Youth Services (DAYS)	1.0	1.3
Gateway Residential Program - Grand Junction	0.7	0.5
Griffith Centers (SR)	6.1	6.7
Hilltop (Independent Living)	0.7	0.2
Job Corps	5.0	2.9
Kids Crossing	1.0	1.8
Mt Evans Qualifying House	12.1	11.6
Savio House	0.4	0.05
Summit Treatment Service, Inc	5.3	8.3
Synergy Administration	3.3	3.4
Third Way Center, Bannock	4.1	4.4
Third Way Center, Pontiac	7.3	7.2
Third Way Center, York	3.1	6.7
Third Way Center, Lincoln	7.9	7.1
Turning Point Center, Prospect	3.8	3.8
Turning Point, Mathews St.	7.8	7.7
Youthtrack, San Luis Valley	2.1	1.6
Youthtrack, Work and Learn	6.0	6.0
<i>Community Subtotal</i>	<i>90.3</i>	<i>89.7</i>
<i>Private Secure + Staff Supervised + Community Subtotal</i>	<i>376.2</i>	<i>399.5</i>
OTHER RESIDENTIAL		
	<i>Monthly</i>	<i>YTD</i>
CMHI-Pueblo	0.0	0.04
CMHI-Pueblo	0.0	0.04
Hospital	0.0	0.1
Immigration Detention Facility	1.0	0.1
Job Corps Parole Program (Federally funded)	1.0	2.2
Other Mental Health Facility	0.0	0.02
Residential Drug/Alcohol Program	0.0	0.2
Residential Mental Health Program	3.0	2.1
Residential Work Program	0.0	0.2
Shelter Care (short term)	0.0	1.4
<i>Other Residential Subtotal*</i>	<i>8.4</i>	<i>8.5</i>
RESIDENTIAL TOTAL	733.2	740.7

**Due to relatively few youth referred to these types of placements, the Other Residential Subtotals may not be the sum of individual placements; this is typically the result of rounding errors and the method by which ADP is calculated.*

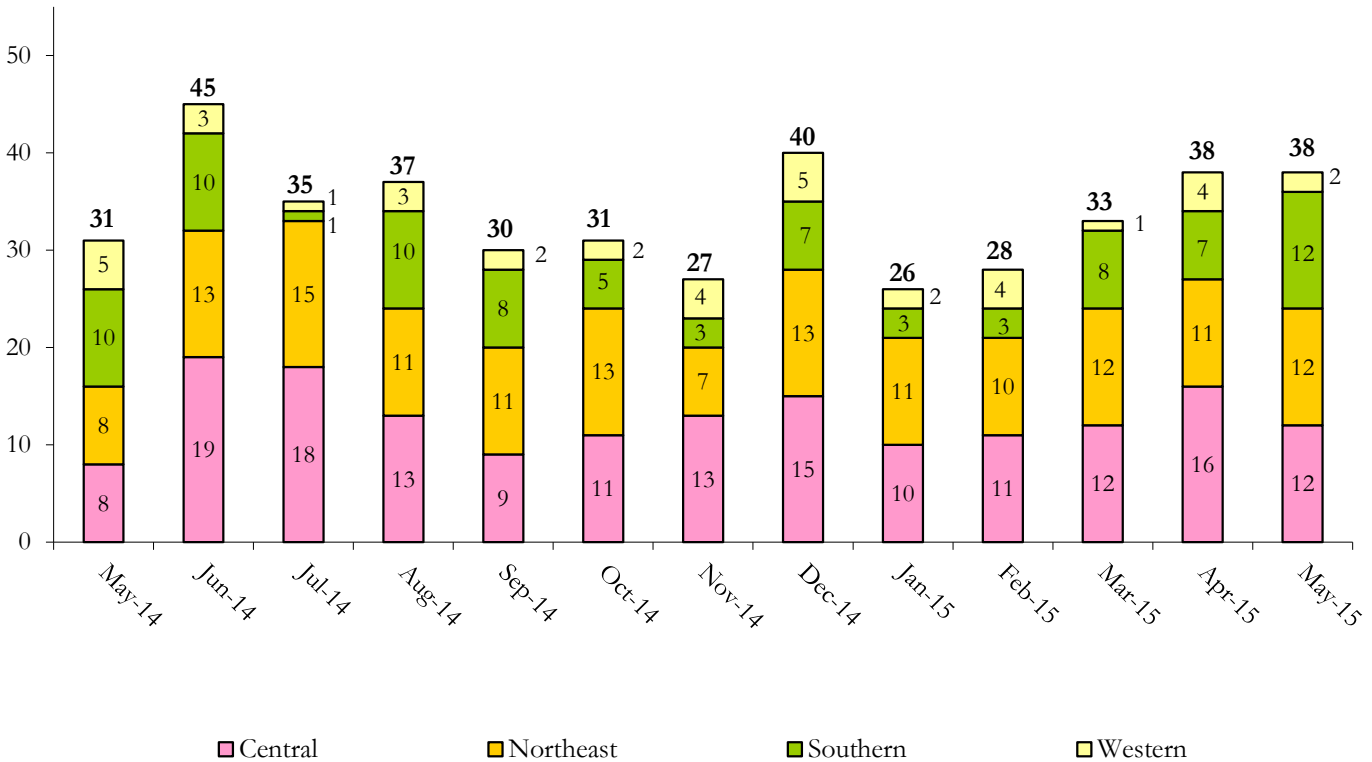
May 2015 DYC Population Report

IV. Commitment ADP and New Commitments

COMMITMENT ADP				
Region	Monthly		YTD	
	May	% Change	May	% Change from Prior FY
Central Region	311.0	2.6%	314.2	-8.5%
Northeast Region	195.3	-1.0%	200.0	-2.1%
Southern Region	157.3	3.4%	156.3	-0.6%
Western Region	69.6	7.0%	70.1	-25.4%
Commitment ADP	733.2	2.2%	740.7	-7.3%

NEW COMMITMENTS					
	FY 14-15		FY 13-14		% Change from last YTD
	May	YTD	May	YTD	
Central Region	12	142	8	166	-14.5%
Northeast Region	12	127	8	132	-3.8%
Southern Region	12	70	10	92	-23.9%
Western Region	2	34	5	39	-12.8%
TOTAL	38	373	31	429	-13.1%

Monthly New Commitments



May 2015 DYC Population Report

V. Parole Services

PAROLE ADP				
Region	Monthly	YTD		% Change from prev YTD
		FY 14-15	FY 13-14	
Central Region	92.9	100.7	115.9	-13.2%
Northeast Region	69.3	74.7	83.4	-10.5%
Southern Region	50.1	42.4	54.7	-22.5%
Western Region	25.8	27.5	29.9	-8.1%
Total	238.2	245.2	284.0	-13.6%

Region	Parole Intakes		Parole Discharges		LOS
	Monthly	YTD	Monthly	YTD	
Central Region	16	160	11	180	7.0
Northeast Region	9	126	18	131	6.6
Southern Region	6	76	4	73	6.4
Western Region	1	41	0	55	5.8
Total	32	403	33	439	6.6

