

April 2015 FY 2014-2015 MONTHLY POPULATION REPORT

Prepared by the Division of Youth Corrections (DYC)
Research and Evaluation Unit
May 21, 2015



COLORADO

**Office of Children,
Youth & Families**

Division of Youth Corrections

April 2015 DYC Population Report

I. Summary Population Data	1
II. Detention ADP by Facility	2
III. Commitment Services	
A. State and Contract ADP by Facility	3
B. Community/Other Residential ADP by Facility	4
IV. Commitment ADP and New Commitments by Region	5
V. Parole Services	6



April 2015 DYC Population Report

I. Summary Population Data*

DETAINED YOUTH

	April 2015		YTD	
	ADP	% change	ADP	LOS
State-Operated	275.8	1.3%	274.6	15.2 days
Contracted Staff Secure	7.7	-22.3%	7.1	19.4 days
Total Detained	283.5	0.5%	281.7	14.6 days

COMMITTED YOUTH

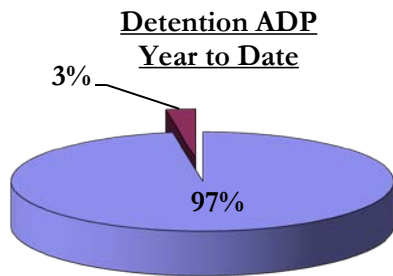
	April 2015		YTD	
	ADP	% change	ADP	LOS
Secure	385.1	5.0%	378.8	10.5 months
Staff Supervised	240.0	-3.8%	263.1	10.4 months
Community Residential	88.1	-1.3%	92.3	6.1 months
Other Residential	4.4	79.7%	6.6	2.5 months
Total Committed Residential	717.5	1.4%	740.8	20.5 months
<i>Committed Residential w/o Boulder</i>	<i>714.8</i>	<i>1.4%</i>	<i>737.5</i>	<i>-</i>

PAROLE YOUTH

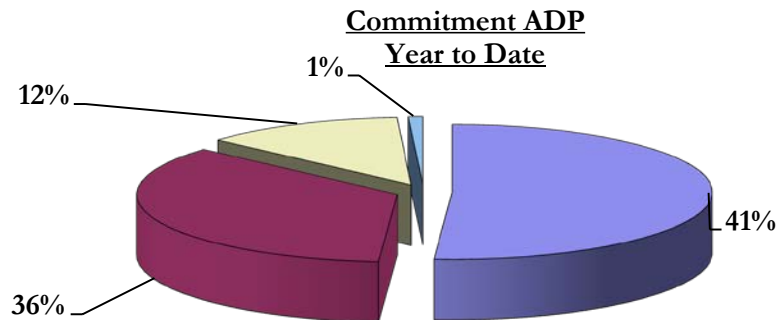
	April 2015		YTD	
	ADP	% change	ADP	LOS
Parole	246.3	0.2%	244.7	6.7 months

TOTAL STATEWIDE ADP

	April 2015		YTD	
	ADP	% change	ADP	LOS
DETENTION	283.5	0.5%	281.7	14.6 days
COMMITMENT	717.5	1.4%	740.8	20.5 months
PAROLE	246.3	0.2%	244.7	6.7 months
STATE TOTAL	1,247.3	0.9%	1,267.3	N/A



■ State-Operated ■ Contracted Staff Secure



■ Secure ■ Staff Supervised ■ Community Residential ■ Other Residential

*Due to rounding, totals may not add to 100%.

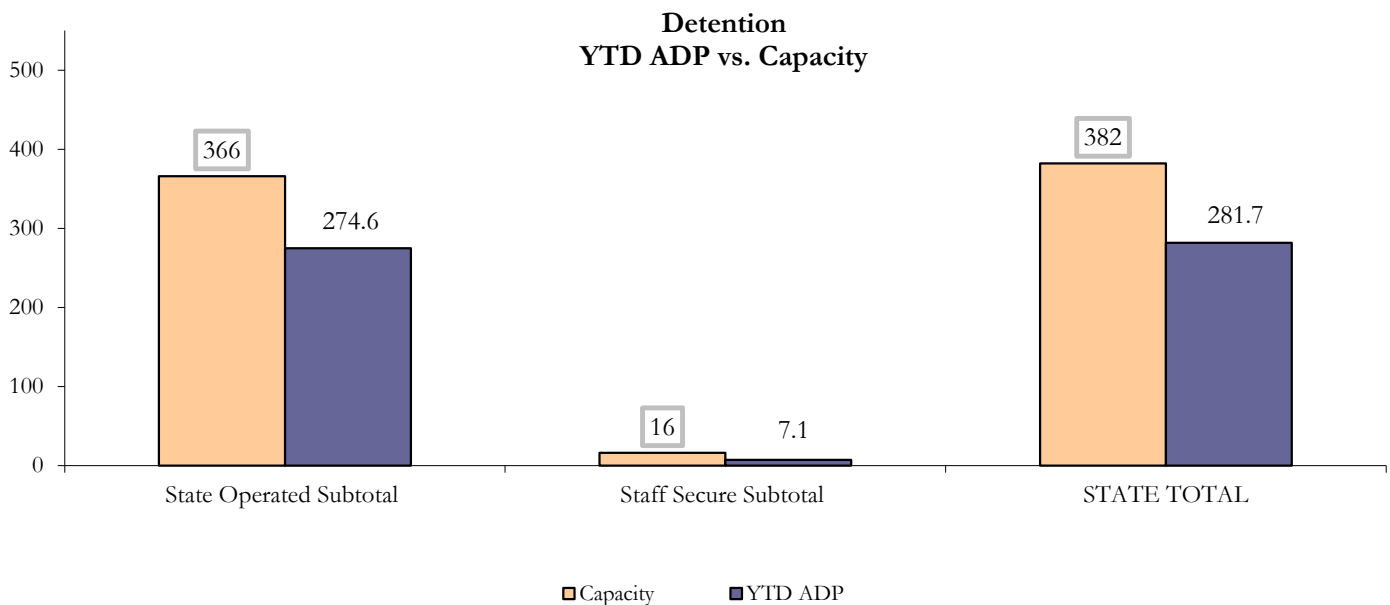
April 2015 DYC Population Report

II. Detention ADP by Facility

State Operated Detention							
Facility	Operating Capacity	Average Daily Population			New Admissions		LOS (days)
		Monthly	YTD	YTD % of Cap	Monthly	YTD	YTD
Adams	30	22.2	22.1	73.7%	54	452	15.4
Gilliam	64	54.0	52.6	82.2%	124	924	18.0
Grand Mesa	27	17.6	17.5	64.9%	32	269	17.2
Marvin Foote	61	47.3	48.7	79.9%	124	1,064	13.4
Mount View	41	25.2	28.5	69.5%	77	616	14.3
Platte Valley	64	52.9	50.1	78.3%	146	1,259	12.0
Pueblo	28	19.5	18.0	64.3%	59	483	13.5
Spring Creek	51	37.1	37.0	72.5%	71	677	15.7
State Subtotal	366	275.8	274.6	75.0%	687	5,744	14.6

Staff Secure Detention							
Facility	Operating Capacity	Average Daily Population			New Admissions		LOS (days)
		Monthly	YTD	YTD % of Cap	Monthly	YTD	YTD
Brown Center	3	2.0	1.5	49.7%	2	14	23.3
Robert DeNier	9	4.3	4.2	47.1%	8	70	18.4
Youthtrack San Luis Valley	4	1.4	1.4	34.9%	5	43	10.0
Staff Secure Subtotal	16	7.7	7.1	44.5%	15	127	16.0

STATEWIDE TOTAL							
	Operating Capacity	Average Daily Population			New Admissions		LOS (days)
		Monthly	YTD	YTD % of Cap	Monthly	YTD	YTD
Total Detention	382	283.5	281.7	73.7%	702	5,871	14.6



April 2015 DYC Population Report

III. Commitment Services

A. State and Contract ADP by Facility

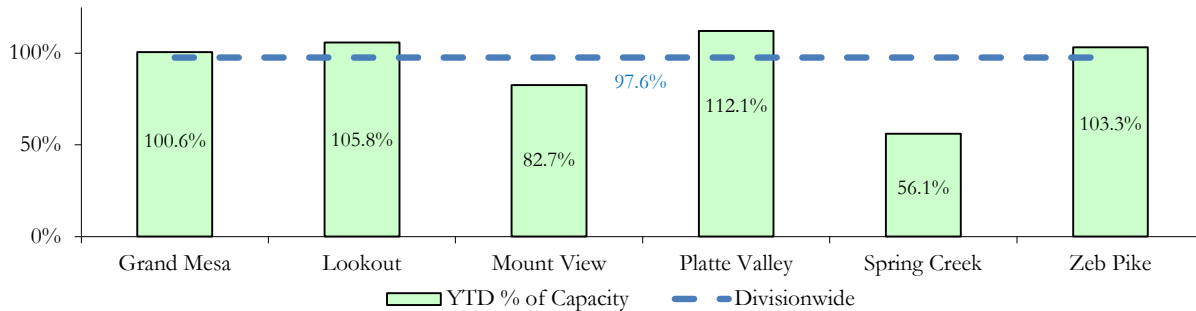
STATE SECURE					
Facility		ADP		Capacity	
		State Secure		Design	
		Monthly	YTD	Capacity	% of YTD
	<i>Adams*</i>	0.9	0.3	-	-
	<i>Gilliam*</i>	0.7	0.3	-	-
	Grand Mesa	42.6	40.2	40	100.6%
	Lookout	136.6	137.6	130	105.8%
	<i>Marvin Foote*</i>	0.6	1.1	-	-
	Mount View *	55.0	52.9	64	82.7%
	Platte Valley	44.7	43.7	39	112.1%
	<i>Pueblo*</i>	0.4	0.5	-	-
	Spring Creek	19.7	16.3	29	56.1%
	Zeb Pike	35.8	37.2	36	103.3%
	Assessment Total	38.2	28.8	-	
	Secure Total	298.7	301.2	-	
	STATE SECURE TOTAL	336.9	330.0	338	97.6%

**Detention only facilities with commitment ADP due to committed youth being held in detention prior to transfer.*

CONTRACT: PRIVATE SECURE + STAFF SUPERVISED

Facility/Program	ADP	
	Monthly	YTD
(Private Secure) Betty K. Marler Center	38.7	38.3
(Private Secure) Robert DeNier	9.4	10.5
Alternative Homes For Youth - Greeley	16.5	17.0
Children's Ark at Pueblo	0.0	2.9
Devereux Cleo Wallace	6.3	13.9
Gateway Residential Program - Delta	3.0	2.8
Hilltop (Residential Youth Services)	6.2	6.0
Jefferson Hills - Aurora	50.0	44.5
Mountain Crest/Poudre Valley Health System	6.9	7.6
Ridge View	134.4	149.8
Robert Brown Center	0.0	1.5
Southern Peaks	3.0	5.3
Third Way Center - Lowry	13.7	11.9
<i>Private Secure & Staff Supervised Subtotal</i>	288.1	311.9

**State Secure Commitment
Percent of Design Capacity by Facility**



April 2015 DYC Population Report

III. Commitment Services Continued

B. Community/Other Residential ADP by Facility

COMMUNITY RESIDENTIAL		
	<i>Monthly</i>	<i>YTD</i>
Community Corrections: Comcor	0.8	0.2
Community Corrections: Mesa County	0.0	0.8
Dale House Project	8.0	7.2
Denver Area Youth Services (DAYS)	1.0	1.3
Gateway Residential Program - Grand Junction	0.0	0.5
Griffith Centers (SR)	7.0	6.7
Griffith Centers - Chins Up	0.0	0.8
Hilltop (Independent Living)	1.0	0.2
H.U.S.A.C. (Haven Corp.)	0.0	0.04
Job Corps	5.5	2.8
Kids Crossing	3.4	3.5
Mt Evans Qualifying House	12.3	11.6
Savio House	0.0	0.01
Summit Treatment Service, Inc	6.1	8.6
Synergy Administration	3.3	3.4
Third Way Center, Bannock	3.1	4.4
Third Way Center, Pontiac	8.4	7.3
Third Way Center, York	2.5	7.0
Third Way Center, Lincoln	7.5	6.9
Turning Point Center, Prospect	2.0	3.8
Turning Point, Mathews St.	7.5	7.7
Whimspire Child Placement	0.1	0.12
Youthtrack, San Luis Valley	2.0	1.5
Youthtrack, Work and Learn	6.6	6.0
<i>Community Subtotal</i>	<i>88.1</i>	<i>92.3</i>
<i>Private Secure + Staff Supervised + Community Subtotal</i>	<i>376.2</i>	<i>404.2</i>
OTHER RESIDENTIAL		
	<i>Monthly</i>	<i>YTD</i>
CMHI-Pueblo	0.0	0.04
CMHI-Pueblo	0.0	0.04
Hospital	0.0	0.1
Immigration Detention Facility	0.5	0.1
Job Corps Parole Program (Federally funded)	0.0	2.1
Other Mental Health Facility	0.0	0.02
Residential Drug/Alcohol Program	0.0	0.2
Residential Mental Health Program	2.0	2.0
Residential Work Program	0.0	0.2
Shelter Care (short term)	0.0	1.5
<i>Other Residential Subtotal*</i>	<i>4.4</i>	<i>6.6</i>
RESIDENTIAL TOTAL	717.5	740.8

**Due to the relatively few youth referred to these types of placements, Other Residential Totals may not add to the sum of the individual placements due to rounding errors and the method by which ADP is calculated.*

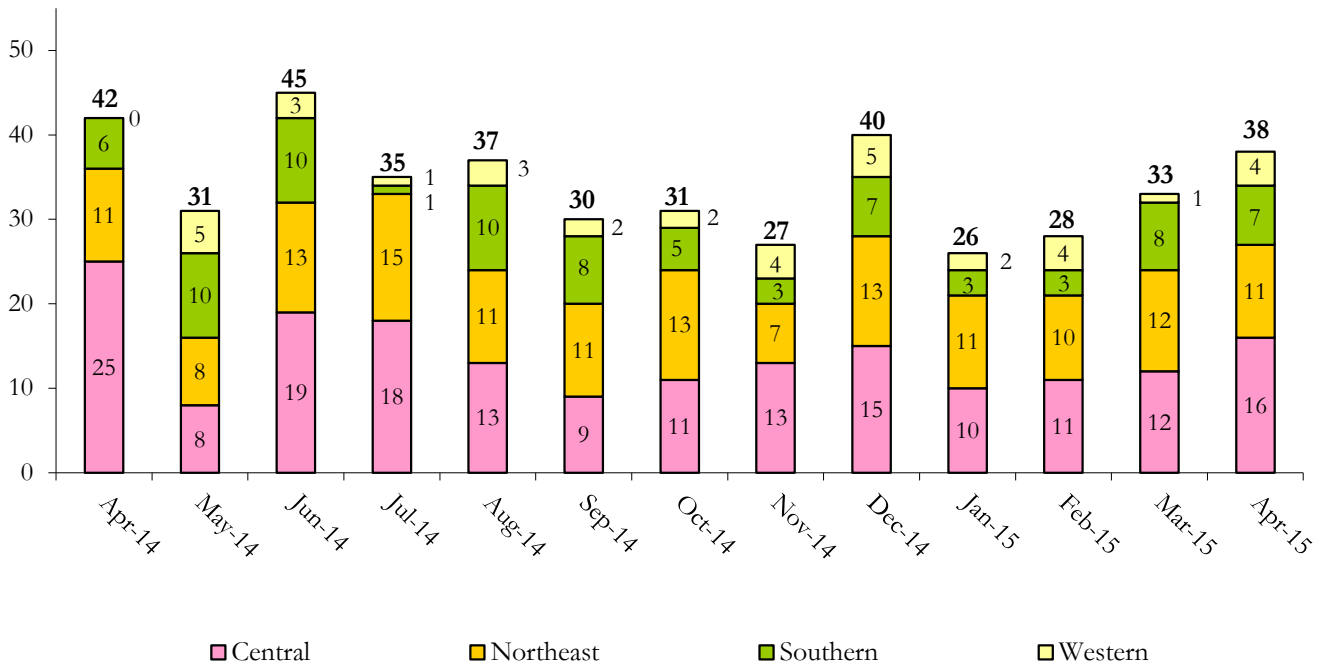
April 2015 DYC Population Report

IV. Commitment ADP and New Commitments

COMMITMENT ADP				
Region	Monthly		YTD	
	April	% Change	April	% Change from Prior FY
Central Region	303.2	1.7%	314.1	-8.6%
Northeast Region	197.3	1.5%	200.5	-2.2%
Southern Region	152.1	2.3%	156.1	-0.2%
Western Region	65.0	-2.5%	70.2	-26.2%
Commitment ADP	717.5	1.4%	740.8	-7.4%

NEW COMMITMENTS					
	FY 14-15		FY 13-14		% Change from last YTD
	April	YTD	April	YTD	
Central Region	16	129	25	158	-18.4%
Northeast Region	11	115	11	124	-7.3%
Southern Region	7	57	6	82	-30.5%
Western Region	4	31	0	34	-8.8%
TOTAL	38	332	42	398	-16.6%

Monthly New Commitments



April 2015 DYC Population Report

V. Parole Services

PAROLE ADP				
Region	Monthly	YTD		% Change from prev YTD
		FY 14-15	FY 13-14	
Central Region	91.1	100.4	116.5	-13.8%
Northeast Region	79.5	75.0	85.1	-11.8%
Southern Region	51.7	41.6	56.5	-26.4%
Western Region	24.0	27.6	29.6	-6.6%
Total	246.3	244.7	287.7	-14.9%

Region	Parole Intakes		Parole Discharges		LOS
	Monthly	YTD	Monthly	YTD	
Central Region	13	144	12	168	7.0
Northeast Region	10	117	14	112	6.8
Southern Region	5	70	10	69	6.3
Western Region	6	40	6	55	5.8
Total	34	371	42	404	6.7

