

March 2015 FY 2014-2015 MONTHLY POPULATION REPORT

Prepared by the Division of Youth Corrections (DYC)
Research and Evaluation Unit
April 22, 2015



COLORADO

**Office of Children,
Youth & Families**

Division of Youth Corrections

March 2015 DYC Population Report

I. Summary Population Data	1
II. Detention ADP by Facility	2
III. Commitment Services	
A. State and Contract ADP by Facility	3
B. Community/Other Residential ADP by Facility	4
IV. Commitment ADP and New Commitments by Region	5
V. Parole Services	6



March 2015 DYC Population Report

I. Summary Population Data*

DETAINED YOUTH

	March 2015		YTD	
	ADP	% change	ADP	LOS
State-Operated	272.2	3.8%	274.5	15.2 days
Contracted Staff Secure	9.9	42.6%	7.1	19.4 days
Total Detained	282.1	4.8%	281.6	14.8 days

COMMITTED YOUTH

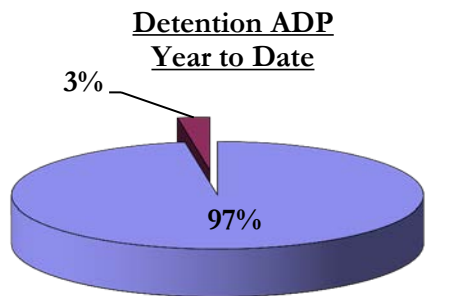
	March 2015		YTD	
	ADP	% change	ADP	LOS
Secure	366.6	-2.9%	377.2	10.7 months
Staff Supervised	249.5	-0.7%	265.7	10.1 months
Community Residential	89.2	-0.4%	92.8	6.0 months
Other Residential	2.4	-45.0%	7.6	2.4 months
Total Committed Residential	707.8	-2.1%	743.3	20.3 months
<i>Committed Residential w/o Boulder</i>	<i>704.8</i>	<i>-2.1%</i>	<i>739.6</i>	-

PAROLE YOUTH

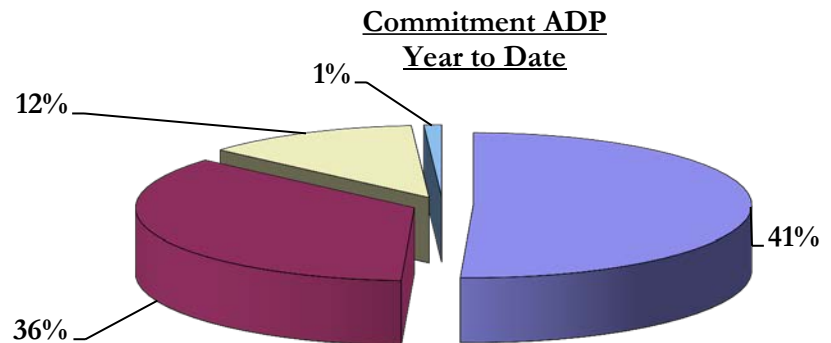
	March 2015		YTD	
	ADP	% change	ADP	LOS
Parole	245.7	0.7%	244.9	6.6 months

TOTAL STATEWIDE ADP

	March 2015		YTD	
	ADP	% change	ADP	LOS
DETENTION	282.1	4.8%	281.6	14.8 days
COMMITMENT	707.8	-2.1%	743.3	20.3 months
PAROLE	245.7	0.7%	244.9	6.6 months
STATE TOTAL	1,235.6	0.0%	1,269.7	N/A



■ State-Operated ■ Contracted Staff Secure



■ Secure ■ Staff Supervised ■ Community Residential ■ Other Residential

*Due to rounding, totals may not add to 100%.

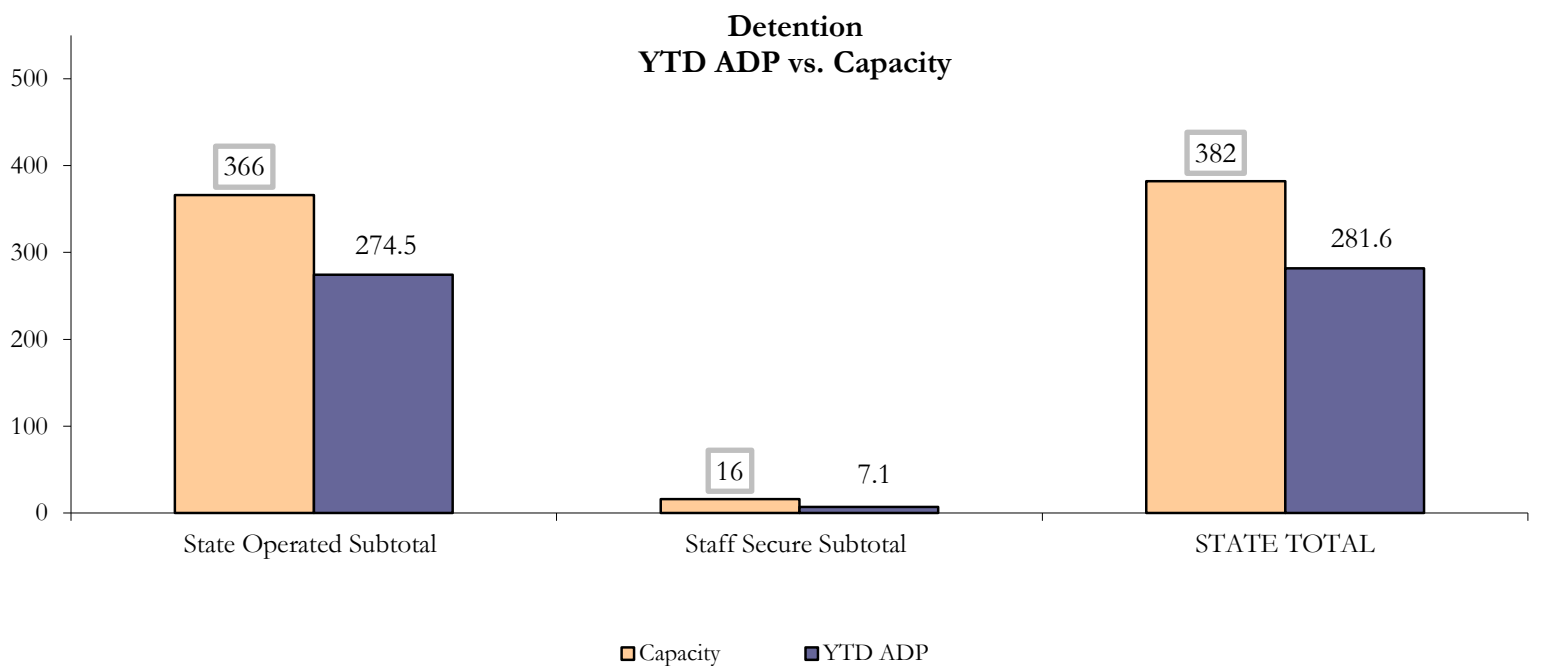
March 2015 DYC Population Report

II. Detention ADP by Facility

State Operated Detention							
Facility	Operating Capacity	Average Daily Population			New Admissions		LOS (days)
		Monthly	YTD	YTD % of Cap	Monthly	YTD	YTD
Adams	30	21.4	22.1	73.7%	54	398	16.0
Gilliam	64	52.2	52.5	82.0%	84	800	18.5
Grand Mesa	27	17.2	17.5	64.8%	25	237	17.5
Marvin Foote	61	49.1	48.9	80.1%	103	940	13.2
Mount View	41	20.8	28.9	70.5%	62	540	15.1
Platte Valley	64	53.0	49.8	77.9%	122	1,113	12.1
Pueblo	28	17.9	17.9	63.8%	54	424	13.5
Spring Creek	51	40.6	36.9	72.4%	77	606	15.9
State Subtotal	366	272.2	274.5	75.0%	581	5,058	14.8

Staff Secure Detention							
Facility	Operating Capacity	Average Daily Population			New Admissions		LOS (days)
		Monthly	YTD	YTD % of Cap	Monthly	YTD	YTD
Brown Center	3	1.7	1.4	47.7%	1	12	22.3
Robert DeNier	9	6.0	4.3	47.3%	5	62	16.3
Youthtrack San Luis Valley	4	2.2	1.4	35.0%	5	38	10.0
Staff Secure Subtotal	16	9.9	7.1	44.3%	11	112	14.7

STATEWIDE TOTAL							
	Operating Capacity	Average Daily Population			New Admissions		LOS (days)
		Monthly	YTD	YTD % of Cap	Monthly	YTD	YTD
Total Detention	382	282.1	281.6	73.7%	592	5,170	14.8



March 2015 DYC Population Report

III. Commitment Services

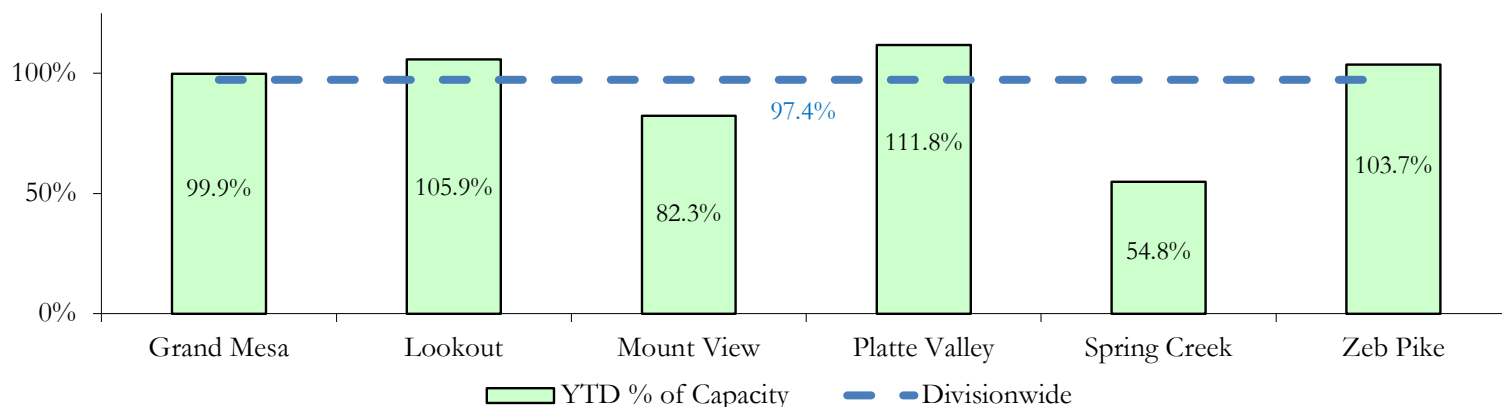
A. State and Contract ADP by Facility

STATE SECURE				
Facility	ADP		Capacity	
	State Secure		Design	
	Monthly	YTD	Capacity	% of YTD
Adams*	0.4	0.2	-	-
Gilliam*	0.3	0.2	-	-
Grand Mesa	41.1	40.0	40	99.9%
Lookout	137.2	137.7	130	105.9%
Marvin Foote*	0.5	1.1	-	-
Mount View*	38.1	52.7	64	82.3%
Platte Valley	42.9	43.6	39	111.8%
Pueblo*	0.2	0.5	-	-
Spring Creek	20.5	15.9	29	54.8%
Zeb Pike	35.7	37.3	36	103.7%
Assessment Total	25.0	27.8	-	
Secure Total	291.9	301.4	-	
GRAND TOTAL	316.9	329.2	338	97.4%

*Detention only facilities with commitment ADP due to committed youth being held in detention prior to transfer.

CONTRACT: PRIVATE SECURE + STAFF SUPERVISED		
Facility/Program	ADP	
	Monthly	YTD
(Private Secure) Betty K. Marler Center	38.4	37.3
(Private Secure) Robert DeNier	11.3	10.6
Alternative Homes For Youth - Greeley	15.9	17.0
Children's Ark at Pueblo	0.0	3.2
Devereux Cleo Wallace	10.7	14.8
Gateway Residential Program - Delta	3.0	2.8
Hilltop (Residential Youth Services)	6.6	6.0
Jefferson Hills - Aurora	46.7	43.9
Mountain Crest/Poudre Valley Health System	9.9	7.7
Ridge View	138.5	151.5
Robert Brown Center	0.0	1.6
Southern Peaks	3.3	5.5
Third Way Center - Lowry	14.9	11.7
TOTAL	299.2	313.7

**State Secure Commitment
Percent of Design Capacity by Facility**



March 2015 DYC Population Report

III. Commitment Services Continued

B. Community/Other Residential ADP by Facility

COMMUNITY RESIDENTIAL		
	<i>Monthly</i>	<i>YTD</i>
Community Corrections: Comcor	0.9	0.1
Community Corrections: Mesa County	0.0	0.9
Dale House Project	6.4	7.1
Denver Area Youth Services (DAYS)	1.0	1.3
Gateway Residential Program - Grand Junction	0.0	0.6
Griffith Centers (SR)	6.8	6.7
Griffith Centers - Chins Up	0.0	0.9
Hilltop (Independent Living)	0.2	0.1
H.U.S.A.C. (Haven Corp.)	0.0	0.05
Job Corps	4.7	2.5
Kids Crossing	5.1	3.5
Mt Evans Qualifying House	11.9	11.5
Savio House	0.0	0.01
Summit Treatment Service, Inc	6.0	8.9
Synergy Administration	3.0	3.4
Third Way Center, Bannock	3.7	4.5
Third Way Center, Pontiac	6.6	7.2
Third Way Center, York	4.3	7.5
Third Way Center, Lincoln	9.0	6.8
Turning Point Center, Prospect	2.6	4.0
Turning Point, Mathews St.	9.1	7.7
Whimspire Child Placement	0.0	0.12
Youthtrack, San Luis Valley	1.7	1.5
Youthtrack, Work and Learn	6.4	6.0
<i>Community Subtotal</i>	<i>89.2</i>	<i>92.8</i>
<i>Contract/Staff Supervised + Community Total</i>	<i>388.5</i>	<i>406.5</i>
OTHER RESIDENTIAL		
	<i>Monthly</i>	<i>YTD</i>
CMHI-Pueblo	0.0	0.02
CMHI-Pueblo	0.0	0.02
Hospital	0.0	0.1
Job Corps Parole Program (Federally funded)	0.0	2.4
Other Mental Health Facility	0.0	0.19
Residential Drug/Alcohol Program	1.7	1.9
Residential Mental Health Program	0.0	0.2
Residential Work Program	0.0	1.7
Shelter Care (short term)	0.5	2.1
<i>Other Residential Total*</i>	<i>2.4</i>	<i>7.6</i>
RESIDENTIAL TOTAL	707.8	743.3

**Due to the relatively few youth referred to these types of placements, Other Residential Totals may not add to the sum of the individual placements due to rounding errors and the method by which ADP is calculated.*

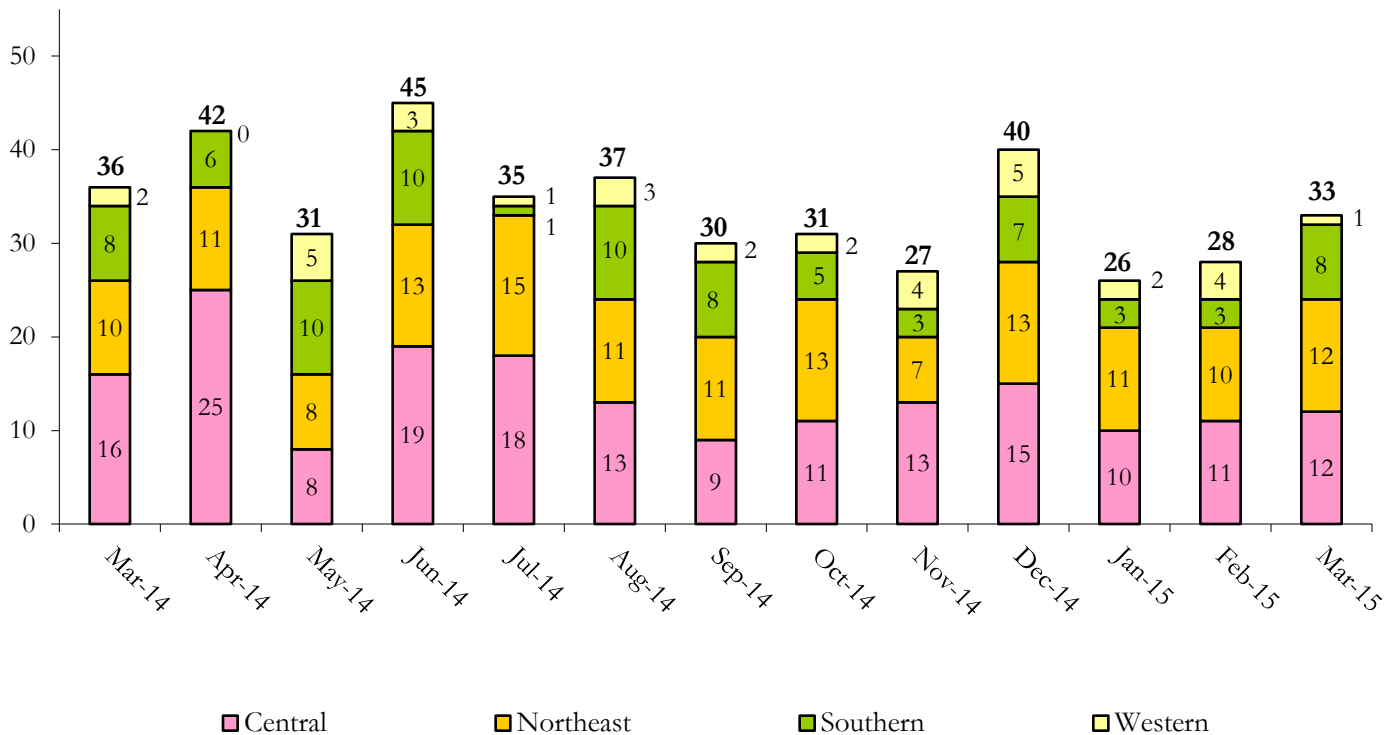
March 2015 DYC Population Report

IV. Commitment ADP and New Commitments

COMMITMENT ADP				
Region	Monthly		YTD	
	March	% Change	March	% Change from Prior FY
Central Region	298.1	2.9%	315.3	6.7%
Northeast Region	194.4	0.0%	200.9	0.8%
Southern Region	148.6	0.2%	156.4	0.7%
Western Region	66.6	1.5%	70.7	28.9%
Commitment ADP	707.8	1.4%	743.3	-7.0%

NEW COMMITMENTS					
	FY 14-15		FY 13-14		% Change from last YTD
	March	YTD	March	YTD	
Central Region	12	112	16	133	-15.8%
Northeast Region	12	104	10	113	-8.0%
Southern Region	8	50	8	75	-33.3%
Western Region	1	27	2	34	-20.6%
TOTAL	33	293	36	355	-17.5%

Monthly New Commitments



March 2015 DYC Population Report

V. Parole Services

PAROLE ADP				
Region	Monthly	YTD		% Change from prev YTD
		FY 14-15	FY 13-14	
Central Region	88.5	102.0	116.8	-12.7%
Northeast Region	82.0	74.1	85.4	-13.2%
Southern Region	50.9	40.5	57.2	-29.1%
Western Region	24.4	28.2	29.1	-3.0%
Total	245.7	244.9	288.5	-15.1%

Region	Parole Intakes		Parole Discharges		
	Monthly	YTD	Monthly	YTD	LOS
Central Region	14	131	24	156	6.9
Northeast Region	17	107	9	97	6.7
Southern Region	9	64	7	59	6.3
Western Region	8	34	6	49	5.9
Total	48	336	46	361	6.6

