

February 2015 FY 2014-2015 MONTHLY POPULATION REPORT

Prepared by the Division of Youth Corrections (DYC)
Research and Evaluation Unit
March 18, 2015



COLORADO

**Office of Children,
Youth & Families**

Division of Youth Corrections

February 2015 DYC Population Report

I. Summary Population Data	1
II. Detention ADP by Facility	2
III. Commitment Services	
A. State and Contract ADP by Facility	3
B. Community/Other Residential ADP by Facility	4
IV. Commitment ADP and New Commitments by Region	5
V. Parole Services	6



February 2015 DYC Population Report

I. Summary Population Data*

DETAINED YOUTH

	February 2015		YTD	
	ADP	% change	ADP	LOS
State-Operated	262.3	8.0%	274.8	15.2 days
Contracted Staff Secure	7.0	-25.5%	6.7	19.4 days
Total Detained	269.3	6.7%	281.5	14.9 days

COMMITTED YOUTH

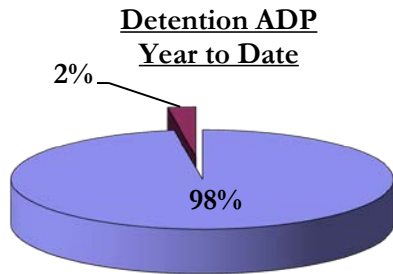
	February 2015		YTD	
	ADP	% change	ADP	LOS
Secure	377.6	0.7%	378.5	10.3 months
Staff Supervised	251.2	-1.1%	267.7	10.4 months
Community Residential	89.5	-5.2%	93.2	6.3 months
Other Residential	4.4	52.7%	8.4	2.5 months
Total Committed Residential	722.8	-0.5%	747.8	20.3 months
<i>Committed Residential w/o Boulder</i>	<i>719.8</i>	<i>-0.5%</i>	<i>744.2</i>	<i>-</i>

PAROLE YOUTH

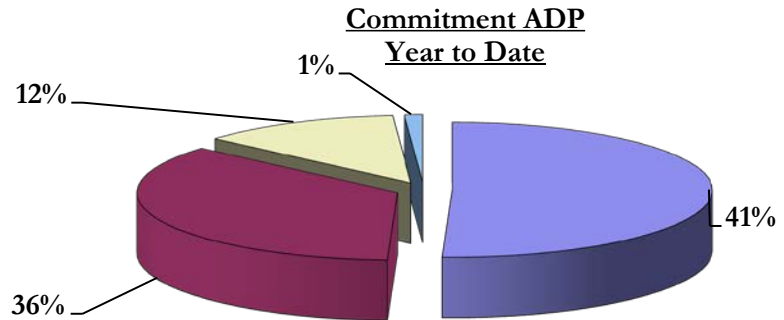
	February 2015		YTD	
	ADP	% change	ADP	LOS
Parole	244.1	4.1%	244.7	6.7 months

TOTAL STATEWIDE ADP

	February 2015		YTD	
	ADP	% change	ADP	LOS
DETENTION	269.3	6.7%	281.5	14.9 days
COMMITMENT	722.8	-0.5%	747.8	20.3 months
PAROLE	244.1	4.1%	244.7	6.7 months
STATE TOTAL	1,236.2	1.9%	1,274.1	N/A



■ State-Operated ■ Contracted Staff Secure



■ Secure ■ Staff Supervised ■ Community Residential ■ Other Residential

*Due to rounding, totals may not add to 100%.

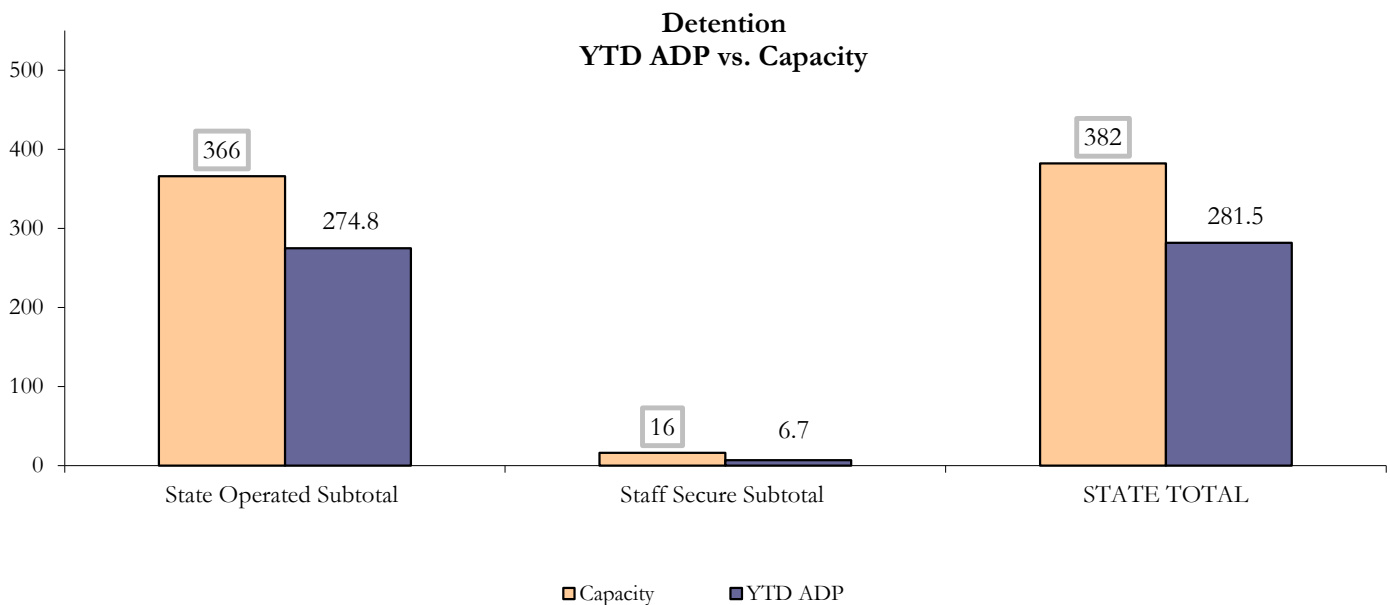
February 2015 DYC Population Report

II. Detention Program Services Continued

State Operated Detention							
Facility	Operating Capacity	Average Daily Population			New Admissions		LOS (days)
		Monthly	YTD	YTD % of Cap	Monthly	YTD	YTD
Adams	30	23.8	22.2	74.0%	47	344	17.0
Gilliam	64	51.0	52.5	82.0%	88	716	18.7
Grand Mesa	27	17.8	17.6	65.0%	26	212	17.1
Marvin Foote	61	48.1	48.8	80.1%	99	837	13.1
Mount View	41	25.4	29.9	73.0%	56	478	15.6
Platte Valley	64	48.0	49.4	77.2%	128	989	12.1
Pueblo	28	14.9	17.8	63.7%	46	370	14.1
Spring Creek	51	33.3	36.5	71.5%	55	529	15.9
State Subtotal	366	262.3	274.8	75.1%	545	4,475	15.0

Staff Secure Detention							
Facility	Operating Capacity	Average Daily Population			New Admissions		LOS (days)
		Monthly	YTD	YTD % of Cap	Monthly	YTD	YTD
Brown Center	3	1.7	1.4	46.7%	1	11	24.1
Robert DeNier	9	4.7	4.0	44.8%	7	57	15.3
Youthtrack San Luis Valley	4	0.5	1.3	32.4%	2	33	10.1
Staff Secure Subtotal	16	7.0	6.7	42.0%	10	101	14.5

STATEWIDE TOTAL							
	Operating Capacity	Average Daily Population			New Admissions		LOS (days)
		Monthly	YTD	YTD % of Cap	Monthly	YTD	YTD
Total Detention	382	269.3	281.5	73.7%	555	4,576	14.9



February 2015 DYC Population Report

III. Commitment Services

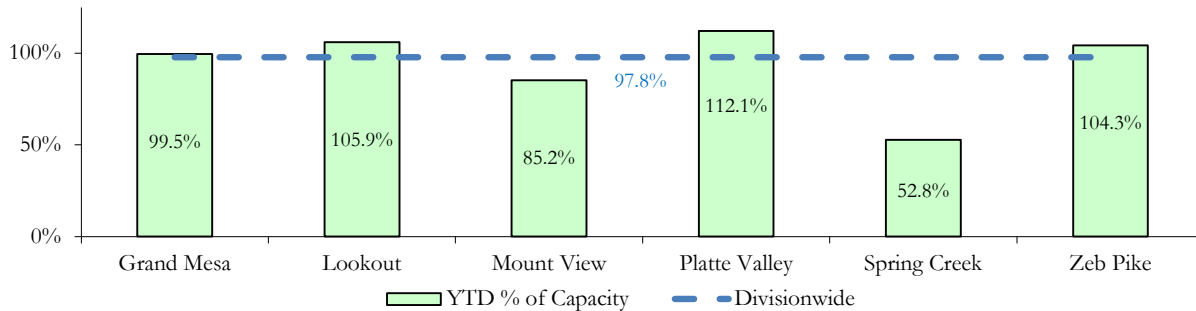
A. State and Contract ADP by Facility

STATE SECURE					
Facility		ADP		Capacity	
		State Secure		Design	
		Monthly	YTD	Capacity	% of YTD
	<i>Adams*</i>	0.0	0.2	-	-
	<i>Gilliam*</i>	0.2	0.2	-	-
	Grand Mesa	45.6	39.8	40	99.5%
	Lookout	137.4	137.7	130	105.9%
	<i>Marvin Foote*</i>	0.3	1.2	-	-
	Mount View*	41.1	54.5	64	85.2%
	Platte Valley	43.1	43.7	39	112.1%
	<i>Pueblo*</i>	0.7	0.6	-	-
	Spring Creek	21.6	15.3	29	52.8%
	Zeb Pike	35.7	37.5	36	104.3%
	Assessment Total	26.5	28.1	-	
	Secure Total	299.2	302.7	-	
	GRAND TOTAL	325.7	330.8	338	97.9%

**Detention only facilities with commitment ADP due to committed youth being held in detention prior to transfer.*

CONTRACT: PRIVATE SECURE + STAFF SUPERVISED		
Facility/Program	ADP	
	Monthly	YTD
(Private Secure) Betty K. Marler Center	38.9	37.2
(Private Secure) Robert DeNier	13.0	10.5
Alternative Homes For Youth - Greeley	15.5	17.2
Children's Ark at Pueblo	0.0	3.6
Devereux Cleo Wallace	10.7	15.3
Gateway Residential Program - Delta	3.0	2.8
Hilltop (Residential Youth Services)	5.3	5.9
Jefferson Hills - Aurora	42.9	43.5
Mountain Crest/Poudre Valley Health System	9.0	7.4
Ridge View	145.8	153.2
Robert Brown Center	1.5	1.9
Southern Peaks	4.8	5.8
Third Way Center - Lowry	12.7	11.2
TOTAL	303.1	315.5

**State Secure Commitment
Percent of Design Capacity by Facility**



February 2015 DYC Population Report

III. Commitment Services Continued

B. Community/Other Residential ADP by Facility

COMMUNITY RESIDENTIAL		
	<i>Monthly</i>	<i>YTD</i>
Community Corrections: Mesa County	0.0	1.0
Dale House Project	6.0	7.2
Denver Area Youth Services (DAYS)	1.0	1.4
Gateway Residential Program - Grand Junction	0.7	0.6
Griffith Centers (SR)	6.8	6.7
Griffith Centers - Chins Up	1.0	1.0
H.U.S.A.C. (Haven Corp.)	0.0	0.1
Job Corps	2.9	2.2
Kids Crossing	3.8	3.2
Mt Evans Qualifying House	11.0	11.4
Savio House	0.0	0.01
Summit Treatment Service, Inc	6.2	9.2
Synergy Administration	1.7	3.4
Third Way Center, Bannock	4.0	4.6
Third Way Center, Pontiac	5.6	7.2
Third Way Center, York	6.8	7.9
Third Way Center, Lincoln	9.3	6.6
Turning Point Center, Prospect	4.3	4.1
Turning Point, Mathews St.	11.1	7.6
Whimspire Child Placement	0.0	0.14
Youthtrack, San Luis Valley	1.9	1.5
Youthtrack, Work and Learn	5.4	5.9
<i>Community Subtotal</i>	<i>89.5</i>	<i>93.2</i>
<i>Contract/Staff Supervised + Community Total</i>	<i>392.7</i>	<i>408.7</i>
OTHER RESIDENTIAL		
	<i>Monthly</i>	<i>YTD</i>
CMHI-Pueblo	0.0	0.02
CMHI-Pueblo	0.0	0.02
Hospital	0.0	0.1
Job Corps Parole Program (Federally funded)	0.0	2.7
Other Mental Health Facility	0.0	0.02
Residential Drug/Alcohol Program	0.0	0.2
Residential Mental Health Program	1.7	2.0
Residential Work Program	0.0	0.3
Shelter Care (short term)	0.3	1.9
<i>Other Residential Total*</i>	<i>4.4</i>	<i>8.4</i>
RESIDENTIAL TOTAL	722.8	747.8

**Due to the relatively few youth referred to these types of placements, Other Residential Totals may not add to the sum of the individual placements due to rounding errors and the method by which ADP is calculated.*

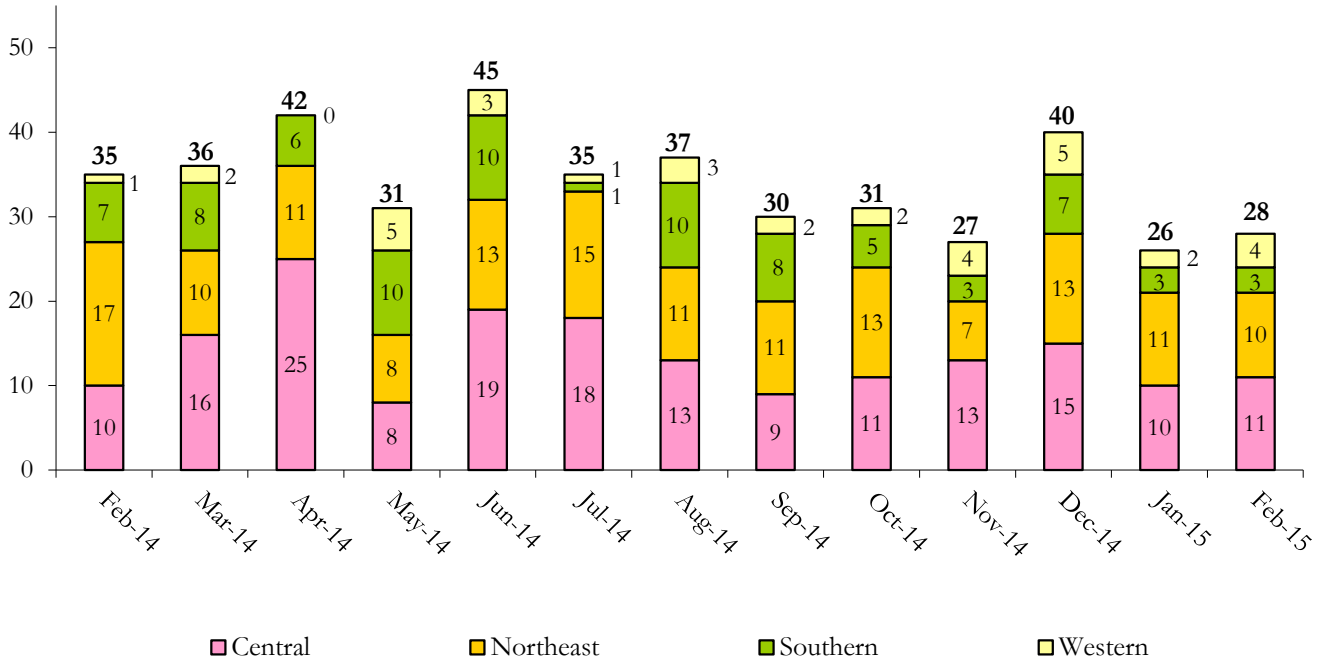
February 2015 DYC Population Report

IV. Commitment ADP and New Commitments

COMMITMENT ADP				
Region	Monthly		YTD	
	February	% Change	February	% Change from Prior FY
Central Region	302.7	2.9%	316.5	6.7%
Northeast Region	193.0	0.0%	199.7	0.8%
Southern Region	155.9	0.2%	160.4	0.7%
Western Region	71.2	1.5%	71.3	28.9%
Commitment ADP	722.8	1.4%	747.8	-7.0%

NEW COMMITMENTS					
	FY 14-15		FY 13-14		% Change from last YTD
	February	YTD	February	YTD	
Central Region	11	100	10	117	-14.5%
Northeast Region	10	92	17	103	-10.7%
Southern Region	3	41	7	65	-36.9%
Western Region	4	26	1	31	-16.1%
TOTAL	28	259	35	316	-18.0%

Monthly New Commitments



February 2015 DYC Population Report

V. Parole Services

PAROLE ADP				
Region	Monthly	YTD		% Change from prev YTD
		FY 14-15	FY 13-14	
Central Region	96.6	103.1	118.0	-12.7%
Northeast Region	80.4	72.9	84.0	-13.3%
Southern Region	47.0	40.1	59.0	-32.1%
Western Region	20.2	28.7	27.7	3.7%
Total	244.1	244.7	288.8	-15.3%

Region	Parole Intakes		Parole Discharges		LOS
	Monthly	YTD	Monthly	YTD	
Central Region	13	116	18	132	7.1
Northeast Region	8	87	9	84	6.8
Southern Region	7	54	5	52	6.5
Western Region	4	26	3	43	5.9
Total	32	283	35	311	6.7

