

January 2015 FY 2014-2015 MONTHLY POPULATION REPORT

Prepared by the Division of Youth Corrections (DYC)
Research and Evaluation Unit
February 20, 2015



COLORADO

**Office of Children,
Youth & Families**

Division of Youth Corrections

January 2015 DYC Population Report

I. Summary Population Data	1
II. Detention ADP by Facility	2
III. Commitment Services	
A. State and Contract ADP by Facility	3
B. Community/Other Residential ADP by Facility	4
IV. Commitment ADP and New Commitments by Region	5
V. Parole Services	6



January 2015 DYC Population Report

I. Summary Population Data*

DETAINED YOUTH

	January 2015		YTD	
	ADP	% change	ADP	LOS
State-Operated	243.0	-9.5%	276.4	15.2 days
Contracted Staff Secure	9.3	52.1%	6.7	19.4 days
Total Detained	252.3	-8.1%	283.1	15.1 days

COMMITTED YOUTH

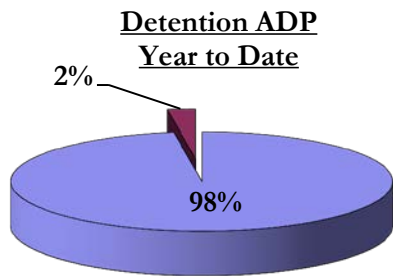
	January 2015		YTD	
	ADP	% change	ADP	LOS
Secure	375.1	-0.6%	377.8	10.7 months
Staff Supervised	254.0	-0.6%	270.7	10.1 months
Community Residential	94.5	-1.2%	94.0	6.0 months
Other Residential	2.9	-63.4%	9.3	2.4 months
Total Committed Residential	726.4	-1.4%	751.8	20.3 months
<i>Committed Residential w/o Boulder</i>	<i>723.4</i>	<i>-1.4%</i>	<i>748.1</i>	<i>-</i>

PAROLE YOUTH

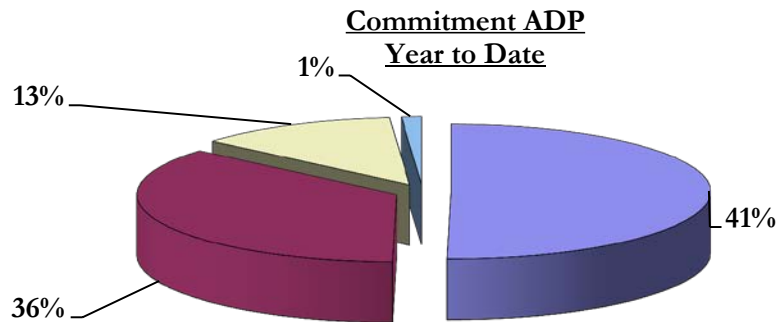
	January 2015		YTD	
	ADP	% change	ADP	LOS
Parole	234.6	-2.0%	243.3	6.5 months

TOTAL STATEWIDE ADP

	January 2015		YTD	
	ADP	% change	ADP	LOS
DETENTION	252.3	-8.1%	283.1	15.1 days
COMMITMENT	726.4	-1.4%	751.8	20.3 months
PAROLE	234.6	-2.0%	243.3	6.5 months
STATE TOTAL	1,213.4	-3.0%	1,278.2	N/A



■ State-Operated ■ Contracted Staff Secure



■ Secure ■ Staff Supervised ■ Community Residential ■ Other Residential

*Due to rounding, totals may not add to 100%.

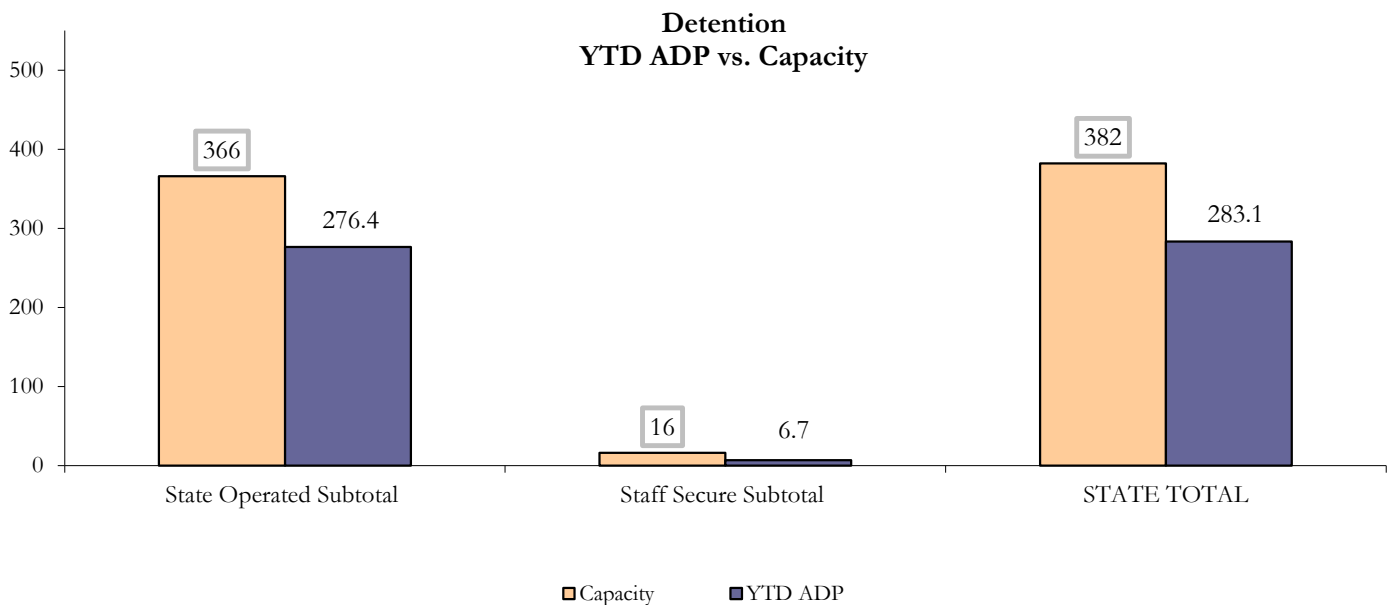
January 2015 DYC Population Report

II. Detention ADP by Facility

State Operated Detention							
Facility	Operating Capacity	Average Daily Population			New Admissions		LOS (days)
		Monthly	YTD	YTD % of Cap	Monthly	YTD	YTD
Adams	30	18.6	22.0	73.3%	53	297	17.1
Gilliam	64	47.0	52.7	82.3%	83	628	18.7
Grand Mesa	27	14.1	17.5	64.9%	26	186	17.1
Marvin Foote	61	47.5	48.9	80.2%	115	738	13.3
Mount View	41	27.5	30.5	74.5%	57	422	15.8
Platte Valley	64	42.3	49.6	77.5%	111	859	12.4
Pueblo	28	15.1	18.2	65.1%	37	324	13.8
Spring Creek	51	30.8	36.9	72.3%	61	474	15.9
State Subtotal	366	243.0	276.4	75.5%	543	3,928	15.1

Staff Secure Detention							
Facility	Operating Capacity	Average Daily Population			New Admissions		LOS (days)
		Monthly	YTD	YTD % of Cap	Monthly	YTD	YTD
Brown Center	3	1.6	1.4	45.2%	1	10	22.9
Robert DeNier	9	5.7	3.9	43.8%	8	50	16.5
Youthtrack San Luis Valley	4	2.1	1.4	35.0%	7	31	9.6
Staff Secure Subtotal	16	9.3	6.7	41.9%	16	91	14.9

STATEWIDE TOTAL							
	Operating Capacity	Average Daily Population			New Admissions		LOS (days)
		Monthly	YTD	YTD % of Cap	Monthly	YTD	YTD
Total Detention	382	252.3	283.1	74.1%	559	4,019	15.1



January 2015 DYC Population Report

III. Commitment Services

A. State and Contract ADP by Facility

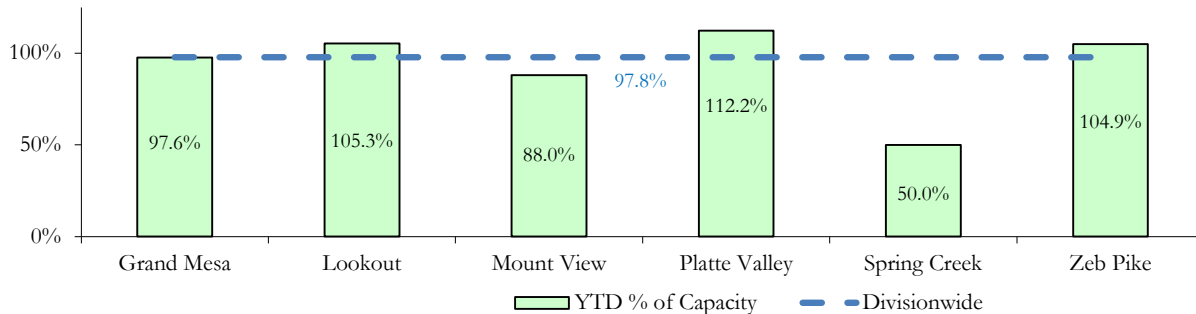
STATE SECURE					
Facility		ADP		Capacity	
		State Secure		Design	
		Monthly	YTD	Capacity	% of YTD
	<i>Adams*</i>	0.2	0.2	-	-
	<i>Gilliam*</i>	0.0	0.2	-	-
	Grand Mesa	44.5	39.0	40	97.6%
	Lookout	137.1	136.9	130	105.3%
	<i>Marvin Foote*</i>	1.3	1.3	-	-
	Mount View*	50.1	56.3	64	88.0%
	Platte Valley	41.1	43.8	39	112.2%
	<i>Pueblo*</i>	0.9	0.6	-	-
	Spring Creek	17.7	14.5	29	50.0%
	Zeb Pike	36.8	37.8	36	104.9%
	Assessment Total	26.0	28.3	-	
	Secure Total	303.6	302.3	-	
	GRAND TOTAL	329.6	330.6	338	97.8%

*Detention only facilities with commitment ADP due to committed youth being held in detention prior to transfer.

CONTRACT: PRIVATE SECURE + STAFF SUPERVISED

Facility/Program	ADP	
	Monthly	YTD
(Private Secure) Betty K. Marler Center	36.6	37.0
(Private Secure) Robert DeNier	8.8	10.2
Alternative Homes For Youth - Greeley	17.3	17.4
Children's Ark at Pueblo	0.0	4.1
Devereux Cleo Wallace	13.1	15.9
Gateway Residential Program - Delta	3.1	3.5
Hilltop (Residential Youth Services)	5.7	6.0
Jefferson Hills - Aurora	40.7	43.6
Mountain Crest/Poudre Valley Health System	7.8	7.2
Ridge View	147.8	154.2
Robert Brown Center	2.0	1.9
Southern Peaks	4.3	6.0
Third Way Center - Lowry	12.1	11.0
TOTAL	299.4	317.9

**State Secure Commitment
Percent of Design Capacity by Facility**



January 2015 DYC Population Report

III. Commitment Services Continued

B. Community/Other Residential ADP by Facility

COMMUNITY RESIDENTIAL		
	<i>Monthly</i>	<i>YTD</i>
Community Corrections: Mesa County	0.9	1.1
Dale House Project	6.5	7.4
Denver Area Youth Services (DAYS)	1.0	1.4
Gateway Residential Program - Grand Junction	1.0	0.6
Griffith Centers (SR)	7.4	6.7
Griffith Centers - Chins Up	1.0	1.0
Hilltop (Independent Living)	0.0	0.0
H.U.S.A.C. (Haven Corp.)	0.0	0.1
Job Corps	2.0	2.1
Kids Crossing	4.9	3.7
Mt Evans Qualifying House	12.5	11.4
Savio House	0.0	0.01
Summit Treatment Service, Inc	8.0	9.5
Synergy Administration	2.5	3.7
Third Way Center, Bannock	5.2	4.7
Third Way Center, Pontiac	6.7	7.5
Third Way Center, York	7.2	8.1
Third Way Center, Lincoln	7.2	6.2
Turning Point Center, Prospect	3.9	4.1
Turning Point, Mathews St.	11.0	7.1
Whimspire Child Placement	0.2	0.16
Youthtrack, San Luis Valley	0.9	1.4
Youthtrack, Work and Learn	4.6	6.0
<i>Community Subtotal</i>	<i>94.5</i>	<i>94.0</i>
<i>Contract/Staff Supervised + Community Total</i>	<i>393.9</i>	<i>411.9</i>
OTHER RESIDENTIAL		
	<i>Monthly</i>	<i>YTD</i>
CMHI-Pueblo	0.0	0.02
CMHI-Pueblo	0.0	0.02
Hospital	0.0	0.1
Job Corps Parole Program (Federally funded)	0.5	3.0
Other Mental Health Facility	0.0	0.03
Residential Drug/Alcohol Program	0.0	0.2
Residential Mental Health Program	1.3	2.0
Residential Work Program	0.0	0.3
Shelter Care (short term)	0.5	2.1
<i>Other Residential Total*</i>	<i>2.9</i>	<i>9.3</i>
RESIDENTIAL TOTAL	726.4	751.8

**Due to the relatively few youth referred to these types of placements, Other Residential Totals may not add to the sum of the individual placements due to rounding errors and the method by which ADP is calculated.*

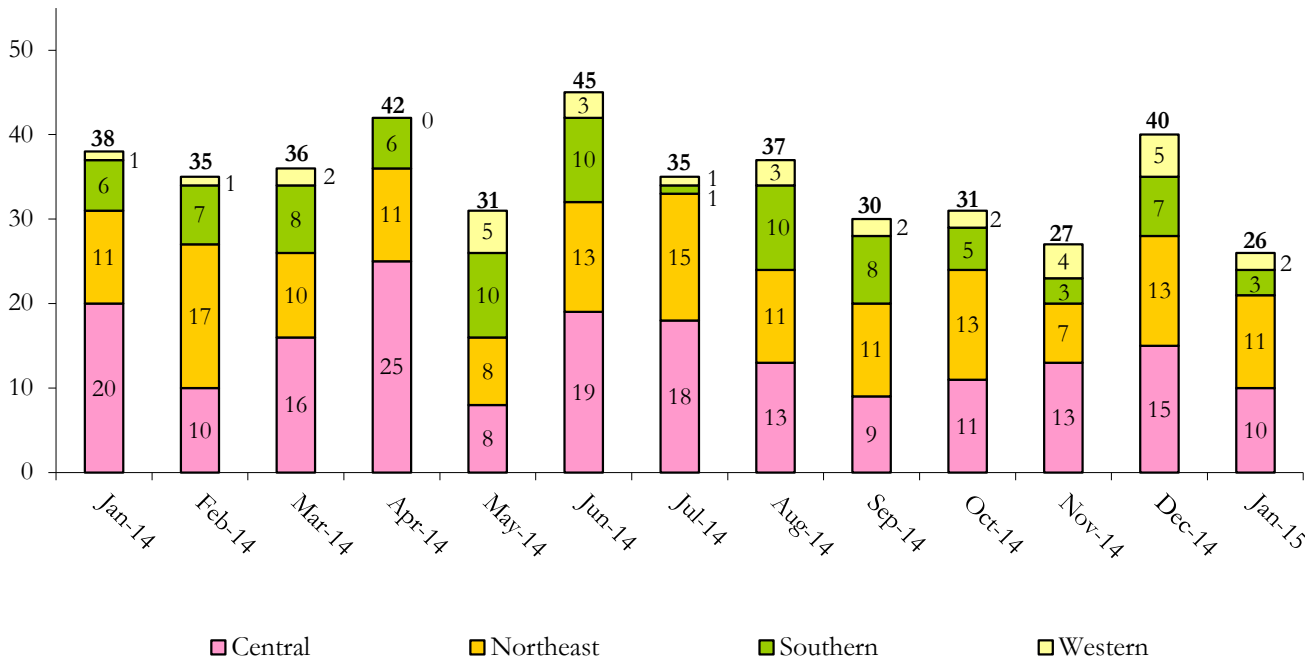
January 2015 DYC Population Report

IV. Commitment ADP and New Commitments

COMMITMENT ADP				
Region	Monthly		YTD	
	January	% Change	January	% Change from Prior FY
Central Region	302.6	2.9%	318.1	6.7%
Northeast Region	196.4	0.0%	201.6	0.8%
Southern Region	156.8	0.2%	160.0	0.7%
Western Region	70.7	1.5%	72.0	28.9%
Commitment ADP	726.4	1.4%	751.8	-6.5%

NEW COMMITMENTS					
	FY 14-15		FY 13-14		% Change from last YTD
	January	YTD	January	YTD	
Central Region	10	88	20	107	-17.8%
Northeast Region	11	82	11	85	-3.5%
Southern Region	3	38	6	59	-35.6%
Western Region	2	21	1	30	-30.0%
TOTAL	26	229	38	281	-18.5%

Monthly New Commitments



January 2015 DYC Population Report

VI. Parole Services

PAROLE ADP				
Region	Monthly	YTD		% Change from prev YTD
		FY 14-15	FY 13-14	
Central Region	96.5	102.9	118.6	-13.2%
Northeast Region	78.6	72.1	83.5	-13.6%
Southern Region	41.3	38.4	59.5	-35.4%
Western Region	18.2	29.8	26.4	13.2%
Total	234.6	243.3	288.0	-15.5%

Region	Parole Intakes		Parole Discharges		LOS
	Monthly	YTD	Monthly	YTD	
Central Region	20	103	15	114	6.6
Northeast Region	7	79	8	75	6.9
Southern Region	10	45	3	47	6.4
Western Region	3	22	2	40	5.8
Total	40	249	28	276	6.5

