

December 2014 FY 2014-2015 MONTHLY POPULATION REPORT

Prepared by the Division of Youth Corrections (DYC)
Research and Evaluation Unit
January 28, 2015



COLORADO

**Office of Children,
Youth & Families**

Division of Youth Corrections

December 2014 DYC Population Report

I. Summary Population Data	1
II. Detention ADP by Facility	2
III. Commitment Services	
A. State and Contract ADP by Facility	3
B. Community/Other Residential ADP by Facility	4
IV. Commitment ADP and New Commitments by Region	5
V. Parole Services	6



December 2014 DYC Population Report

I. Summary Population Data*

DETAINED YOUTH

	December 2014		YTD	
	ADP	% change	ADP	LOS
State-Operated	268.4	-7.0%	282.0	15.2 days
Contracted Staff Secure	6.1	-17.6%	6.3	19.4 days
Total Detained	274.6	-7.3%	288.2	15.0 days

COMMITTED YOUTH

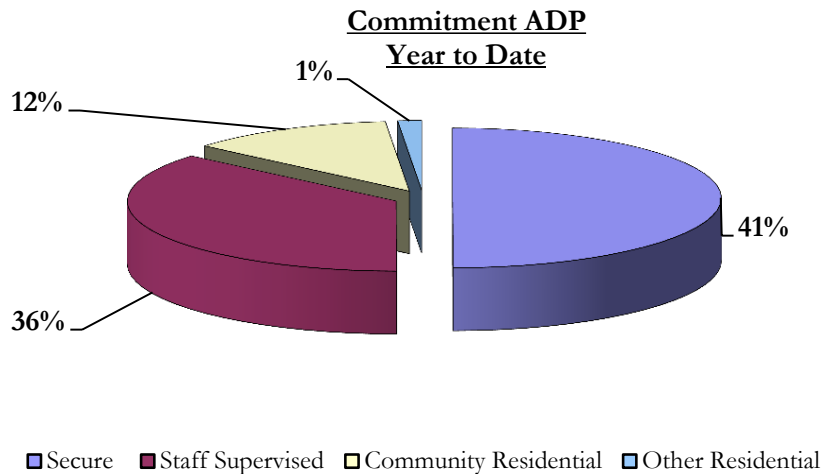
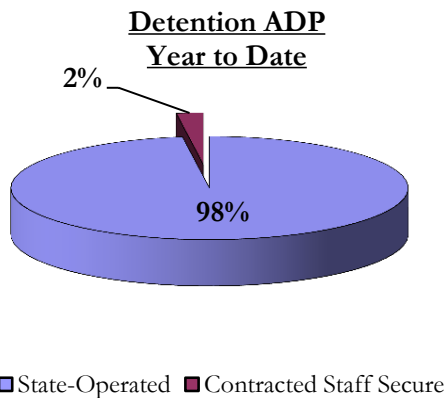
	December 2014		YTD	
	ADP	% change	ADP	LOS
Secure	377.4	0.7%	378.3	10.4 months
Staff Supervised	255.4	-3.1%	274.3	10.0 months
Community Residential	95.6	-2.3%	93.6	6.1 months
Other Residential	8.0	-1.8%	10.8	2.6 months
Total Committed Residential	736.4	-1.1%	757.0	20.0 months
<i>Committed Residential w/o Boulder</i>	<i>733.4</i>	<i>-1.2%</i>	<i>753.2</i>	-

PAROLE YOUTH

	December 2014		YTD	
	ADP	% change	ADP	LOS
Parole	239.5	-2.2%	243.4	6.5 months

TOTAL STATEWIDE ADP

	December 2014		YTD	
	ADP	% change	ADP	LOS
DETENTION	274.6	-7.3%	288.2	15.0 days
COMMITMENT	736.4	-1.1%	757.0	20.0 months
PAROLE	239.5	-2.2%	243.4	6.5 months
STATE TOTAL	1,250.5	-2.7%	1,288.7	N/A



*Due to rounding, totals may not add to 100%.

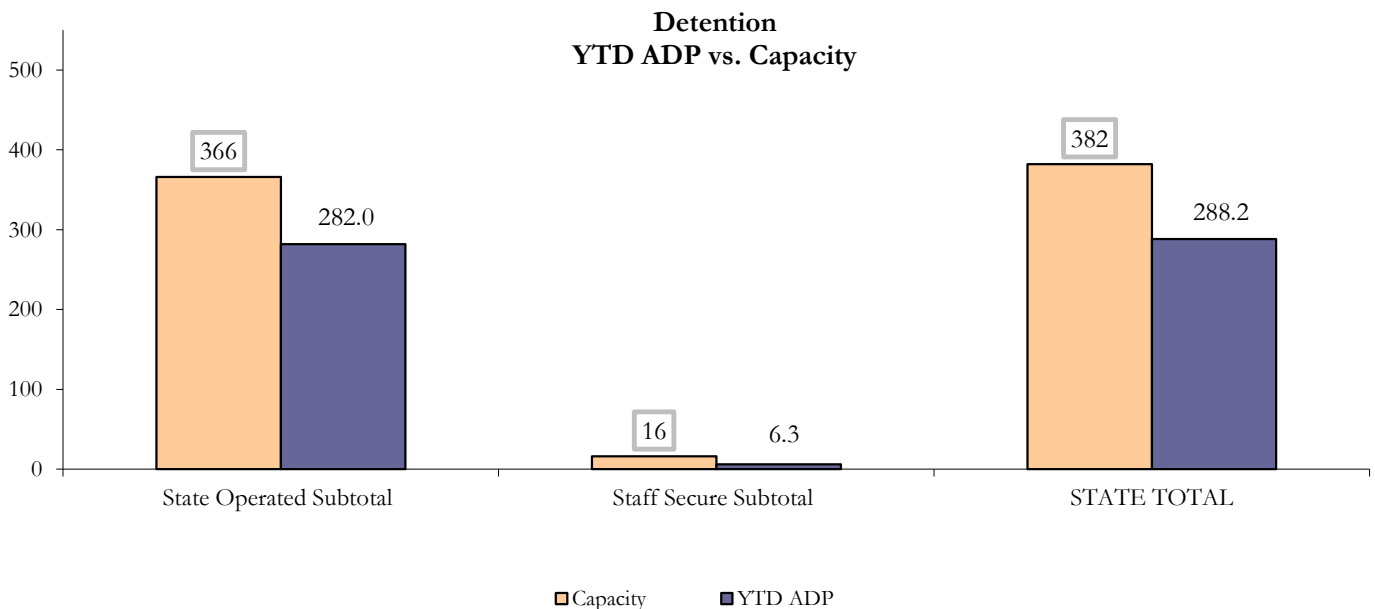
December 2014 DYC Population Report

II. Detention ADP by Facility

State Operated Detention							
Facility	Operating Capacity	Average Daily Population			New Admissions		LOS (days)
		Monthly	YTD	YTD % of Cap	Monthly	YTD	YTD
Adams	30	21.6	22.5	75.2%	40	244	18.4
Gilliam	64	51.2	53.6	83.8%	84	545	18.6
Grand Mesa	27	17.2	18.1	67.0%	22	160	18.1
Marvin Foote	61	46.4	49.2	80.6%	106	623	13.2
Mount View	41	28.9	31.0	75.7%	59	365	15.4
Platte Valley	64	52.0	50.8	79.5%	127	748	12.2
Pueblo	28	16.2	18.7	67.0%	43	288	13.7
Spring Creek	51	35.0	37.9	74.3%	66	413	15.7
State Subtotal	366	268.4	282.0	77.0%	547	3,386	15.0

Staff Secure Detention							
Facility	Operating Capacity	Average Daily Population			New Admissions		LOS (days)
		Monthly	YTD	YTD % of Cap	Monthly	YTD	YTD
Brown Center	3	1.2	1.3	44.0%	1	9	22.9
Robert DeNier	9	4.3	3.6	40.5%	6	42	13.2
Youthtrack San Luis Valley	4	0.7	1.3	32.3%	2	24	10.3
Staff Secure Subtotal	16	6.1	6.3	39.1%	9	75	13.5

STATEWIDE TOTAL							
	Operating Capacity	Average Daily Population			New Admissions		LOS (days)
		Monthly	YTD	YTD % of Cap	Monthly	YTD	YTD
Total Detention	382	274.6	288.2	75.5%	556	3,461	15.0



December 2014 DYC Population Report

III. Commitment Services

A. State and Contract ADP by Facility

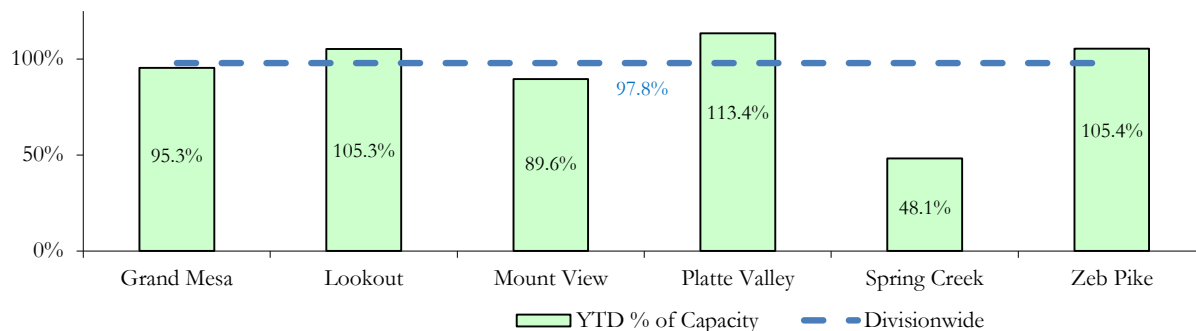
STATE SECURE				
Facility	ADP		Capacity	
	State Secure		Design	
	Monthly	YTD	Capacity	% of YTD
<i>Adams*</i>	0.0	0.3	-	-
<i>Gilliam*</i>	0.0	0.2	-	-
Grand Mesa	44.6	38.1	40	95.3%
Lookout	136.5	136.8	130	105.3%
<i>Marvin Foote*</i>	2.1	1.3	-	-
Mount View*	55.9	57.3	64	89.6%
Platte Valley	40.9	44.2	39	113.4%
<i>Pueblo*</i>	0.5	0.5	-	-
Spring Creek	13.1	14.0	29	48.1%
Zeb Pike	37.8	37.9	36	105.4%
Assessment Total	31.4	28.7	-	
Secure Total	300.0	302.0	-	
GRAND TOTAL	331.4	330.7	338	97.8%

**Detention only facilities with commitment ADP due to committed youth being held in detention prior to transfer.*

CONTRACT: PRIVATE SECURE + STAFF SUPERVISED

Facility/Program	ADP	
	Monthly	YTD
(Private Secure) Betty K. Marler Center	37.7	37.1
(Private Secure) Robert DeNier	8.3	10.5
Alternative Homes For Youth - Greeley	18.7	17.4
Children's Ark at Pueblo	0.0	4.8
Devereux Cleo Wallace	13.8	16.4
Gateway Residential Program - Delta	3.3	3.6
Hilltop (Residential Youth Services)	6.1	6.2
Jefferson Hills - Aurora	39.5	44.1
Mountain Crest/Poudre Valley Health System	7.0	7.1
Ridge View	147.4	155.8
Robert Brown Center	2.0	1.9
Southern Peaks	5.6	6.2
Third Way Center - Lowry	12.1	10.9
TOTAL	301.4	321.9

**State Secure Commitment
Percent of Design Capacity by Facility**



December 2014 DYC Population Report

III. Commitment Services Continued

B. Community/Other Residential ADP by Facility

COMMUNITY RESIDENTIAL		
	<i>Monthly</i>	<i>YTD</i>
Community Corrections: Mesa County	1.0	1.2
Dale House Project	7.4	7.5
Denver Area Youth Services (DAYS)	1.0	1.5
Gateway Residential Program - Grand Junction	1.0	0.6
Griffith Centers (SR)	6.7	6.6
Griffith Centers - Chins Up	1.0	1.0
Hilltop (Independent Living)	0.0	0.1
H.U.S.A.C. (Haven Corp.)	0.0	0.1
Job Corps	1.5	2.2
Kids Crossing	5.0	3.0
Mt Evans Qualifying House	11.5	11.3
Savio House	0.0	0.01
Summit Treatment Service, Inc	10.2	9.9
Synergy Administration	3.3	3.9
Third Way Center, Bannock	5.7	4.6
Third Way Center, Pontiac	6.6	7.6
Third Way Center, York	7.1	8.2
Third Way Center, Lincoln	6.5	6.0
Turning Point Center, Prospect	3.7	4.2
Turning Point, Mathews St.	8.0	6.5
Whimspire Child Placement	0.0	0.03
Youthtrack, San Luis Valley	1.0	1.5
Youthtrack, Work and Learn	7.4	6.3
<i>Community Subtotal</i>	<i>95.6</i>	<i>93.6</i>
<i>Contract/Staff Supervised + Community Total</i>	<i>397.0</i>	<i>415.5</i>
OTHER RESIDENTIAL		
	<i>Monthly</i>	<i>YTD</i>
CMHI-Pueblo	0.0	0.02
Hospital	0.1	0.1
Job Corps Parole Program (Federally funded)	0.6	3.1
Other Mental Health Facility	0.0	0.03
Residential Drug/Alcohol Program	1.0	0.3
Residential Mental Health Program	1.5	2.1
Residential Work Program	0.3	0.3
Shelter Care (short term)	1.7	2.6
<i>Other Residential Total*</i>	<i>8.0</i>	<i>10.8</i>
RESIDENTIAL TOTAL	736.4	757.0

**Due to the relatively few youth referred to these types of placements, Other Residential Totals may not add to the sum of the individual placements due to rounding errors and the method by which ADP is calculated.*

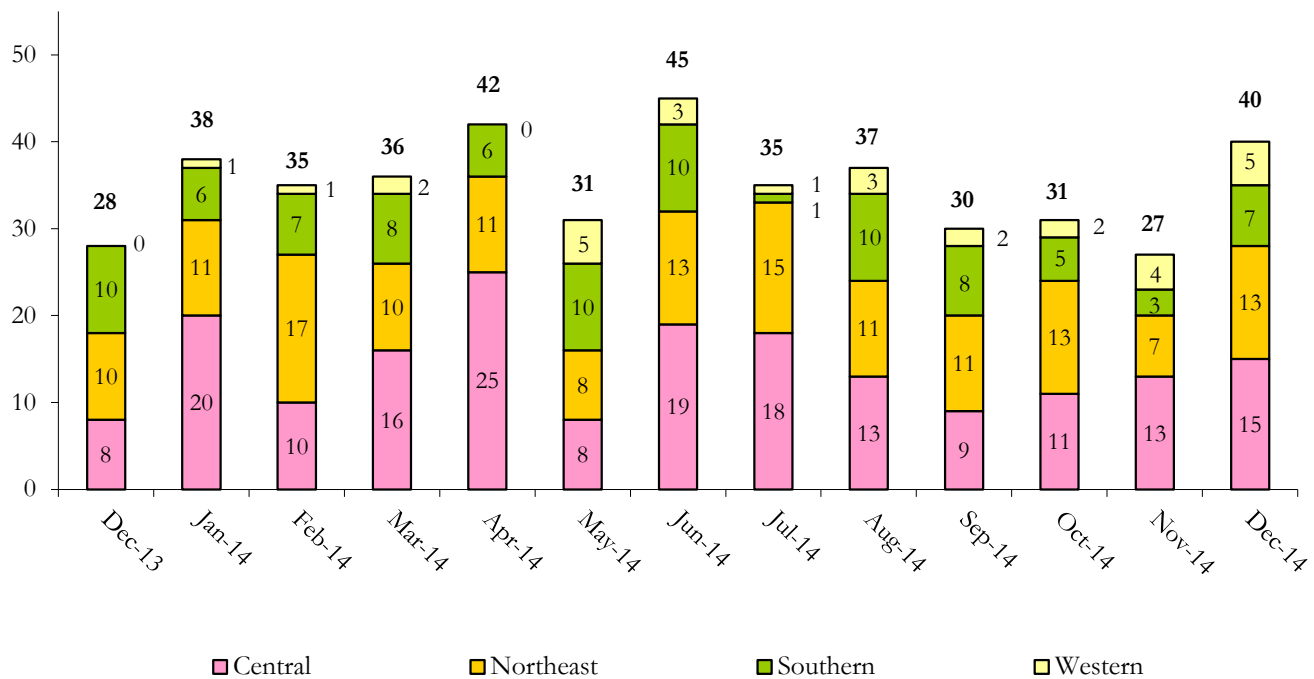
December 2014 DYC Population Report

IV. Commitment ADP and New Commitments

COMMITMENT ADP				
Region	Monthly		YTD	
	December	% Change	December	% Change from Prior FY
Central Region	311.7	-0.6%	321.1	-5.8%
Northeast Region	196.4	-2.5%	201.5	-1.4%
Southern Region	156.5	-0.1%	160.8	0.8%
Western Region	71.8	-1.1%	73.6	-28.4%
Commitment ADP	736.4	-1.1%	757.0	-6.2%

NEW COMMITMENTS					
	FY 14-15		FY 13-14		% Change from last YTD
	December	YTD	December	YTD	
Central Region	15	78	8	88	-11.4%
Northeast Region	13	70	10	74	-5.4%
Southern Region	7	34	10	53	-35.8%
Western Region	5	19	0	28	-32.1%
TOTAL	40	201	28	243	-17.3%

Monthly New Commitments



December 2014 DYC Population Report

VI. Parole Services

PAROLE ADP				
Region	Monthly	YTD		% Change from prev YTD
		FY 14-15	FY 13-14	
Central Region	102.1	103.6	119.2	-13.1%
Northeast Region	77.8	70.4	81.4	-13.5%
Southern Region	37.0	37.5	60.4	-37.8%
Western Region	22.6	31.9	23.8	33.9%
Total	239.5	243.4	284.8	-14.5%

Region	Parole Intakes		Parole Discharges		LOS
	Monthly	YTD	Monthly	YTD	
Central Region	12	83	22	99	6.6
Northeast Region	11	70	10	67	7.0
Southern Region	6	34	9	44	6.4
Western Region	1	20	10	38	5.7
Total	30	207	51	248	6.5

