

# November 2014 FY 2014-2015 MONTHLY POPULATION REPORT

---

Prepared by the Division of Youth Corrections (DYC)  
Research and Evaluation Unit  
December 17, 2014



**COLORADO**

**Office of Children,  
Youth & Families**

Division of Youth Corrections

# November 2014 DYC Population Report

<b>I. Summary Population Data</b>	<b>1</b>
<b>II. Detention ADP by Facility</b>	<b>2</b>
<b>III. Commitment Services</b>	
A. State and Contract ADP by Facility	3
B. Community/Other Residential ADP by Facility	4
<b>IV. Commitment ADP and New Commitments by Region</b>	<b>5</b>
<b>V. Parole Services</b>	<b>6</b>



# November 2014 DYC Population Report

## I. Summary Population Data\*

### DETAINED YOUTH

	November 2014		YTD	
	ADP	% change	ADP	LOS
State-Operated	288.6	-2.8%	284.7	15.2 days
Contracted Staff Secure	7.4	2.3%	6.3	19.4 days
<b>Total Detained</b>	<b>296.0</b>	<b>-2.7%</b>	<b>290.9</b>	<b>15.1 days</b>

### COMMITTED YOUTH

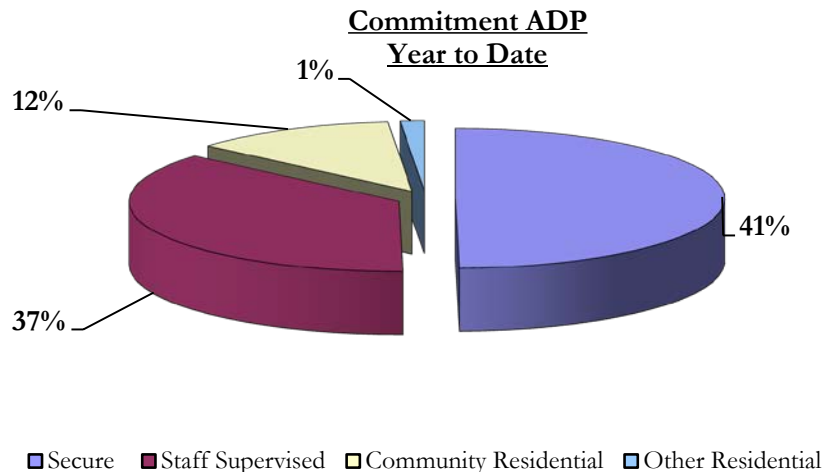
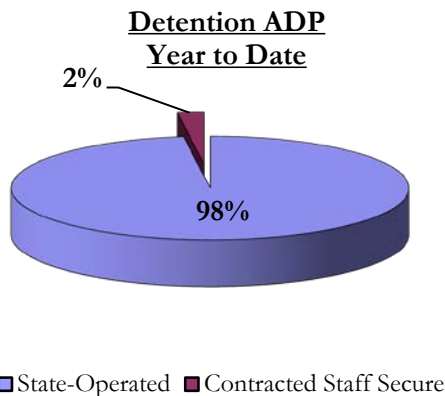
	November 2014		YTD	
	ADP	% change	ADP	LOS
Secure	374.7	-0.7%	378.5	10.8 months
Staff Supervised	263.7	-2.2%	278.1	9.7 months
Community Residential	97.9	2.9%	93.0	5.9 months
Other Residential	8.1	-7.1%	11.0	2.2 months
<b>Total Committed Residential</b>	<b>744.3</b>	<b>-0.9%</b>	<b>760.6</b>	<b>19.9 months</b>
<i>Committed Residential w/o Boulder</i>	<i>742.3</i>	<i>-0.8%</i>	<i>756.6</i>	<i>-</i>

### PAROLE YOUTH

	November 2014		YTD	
	ADP	% change	ADP	LOS
Parole	244.8	-1.6%	244.2	6.6 months

### TOTAL STATEWIDE ADP

	November 2014		YTD	
	ADP	% change	ADP	LOS
<b>DETENTION</b>	<b>296.0</b>	<b>-2.7%</b>	<b>290.9</b>	<b>15.1 days</b>
<b>COMMITMENT</b>	<b>744.3</b>	<b>-0.9%</b>	<b>760.6</b>	<b>19.9 months</b>
<b>PAROLE</b>	<b>244.8</b>	<b>-1.6%</b>	<b>244.2</b>	<b>6.6 months</b>
<b>STATE TOTAL</b>	<b>1,285.2</b>	<b>-1.4%</b>	<b>1,295.7</b>	<b>N/A</b>



\*Due to rounding, totals may not add to 100%.

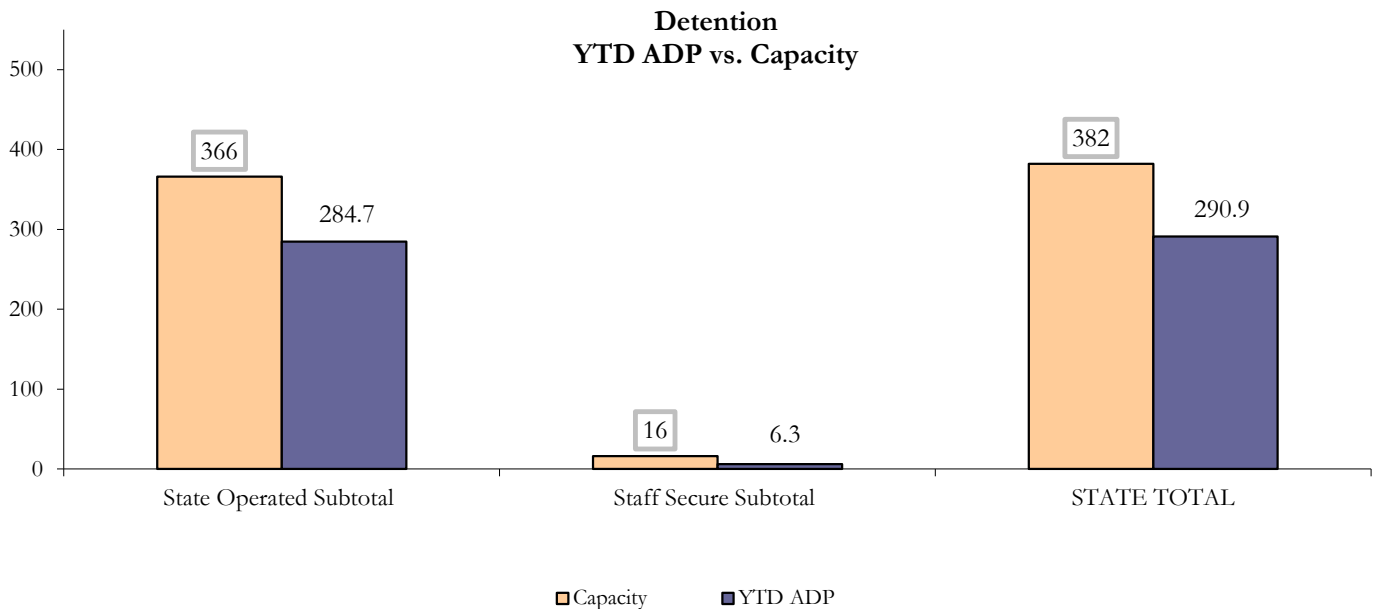
# November 2014 DYC Population Report

## II. Detention ADP by Facility

State Operated Detention							
Facility	Operating Capacity	Average Daily Population			New Admissions		LOS (days)
		Monthly	YTD	YTD % of Cap	Monthly	YTD	YTD
Adams	30	22.1	22.7	75.8%	39	204	18.6
Gilliam	64	54.1	54.1	84.6%	80	461	17.8
Grand Mesa	27	22.8	18.3	67.7%	32	138	17.1
Marvin Foote	61	49.8	49.7	81.5%	95	517	13.5
Mount View	41	32.1	31.5	76.8%	62	306	15.9
Platte Valley	64	49.4	50.6	79.1%	123	620	12.4
Pueblo	28	16.2	19.3	68.8%	46	245	14.4
Spring Creek	51	42.1	38.4	75.4%	63	347	15.8
<b>State Subtotal</b>	<b>366</b>	<b>288.6</b>	<b>284.7</b>	<b>77.8%</b>	<b>540</b>	<b>2,838</b>	<b>15.1</b>

Staff Secure Detention							
Facility	Operating Capacity	Average Daily Population			New Admissions		LOS (days)
		Monthly	YTD	YTD % of Cap	Monthly	YTD	YTD
Brown Center	3	0.6	1.4	45.1%	2	8	27.4
Robert DeNier	9	4.3	3.5	39.0%	7	36	13.3
Youthtrack San Luis Valley	4	2.6	1.4	35.5%	4	22	9.5
<b>Staff Secure Subtotal</b>	<b>16</b>	<b>7.4</b>	<b>6.3</b>	<b>39.2%</b>	<b>13</b>	<b>66</b>	<b>13.6</b>

STATEWIDE TOTAL							
	Operating Capacity	Average Daily Population			New Admissions		LOS (days)
		Monthly	YTD	YTD % of Cap	Monthly	YTD	YTD
<b>Total Detention</b>	<b>382</b>	<b>296.0</b>	<b>290.9</b>	<b>76.2%</b>	<b>553</b>	<b>2,904</b>	<b>15.1</b>



# November 2014 DYC Population Report

## III. Commitment Services

### A. State and Contract ADP by Facility

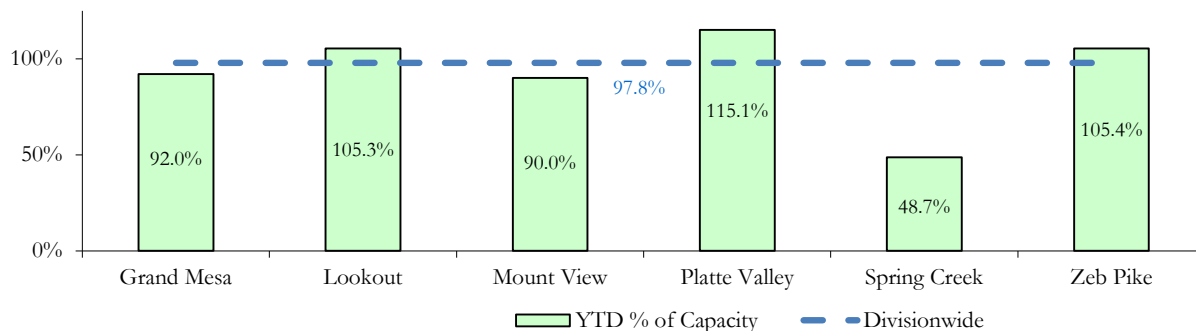
STATE SECURE				
Facility	ADP		Capacity	
	State Secure		Design	
	Monthly	YTD	Capacity	% of YTD
Adams*	0.0	0.3	-	-
Gilliam*	0.3	0.3	-	-
Grand Mesa	38.9	36.8	40	92.0%
Lookout	137.0	136.9	130	105.3%
Marvin Foote*	3.1	1.2	-	-
Mount View *	55.0	57.6	64	90.0%
Platte Valley	42.0	44.9	39	115.1%
Pueblo*	0.0	0.5	-	-
Spring Creek	13.2	14.1	29	48.7%
Zeb Pike	37.8	38.0	36	105.4%
<b>Assessment Total</b>	<b>26.5</b>	<b>28.1</b>	-	
<b>Secure Total</b>	<b>300.9</b>	<b>302.5</b>	-	
<b>GRAND TOTAL</b>	<b>327.4</b>	<b>330.6</b>	<b>338</b>	<b>97.8%</b>

\*Detention only facilities with commitment ADP due to committed youth being held in detention prior to transfer.

### CONTRACT: PRIVATE SECURE + STAFF SUPERVISED

Facility/Program	ADP	
	Monthly	YTD
(Private Secure) Betty K. Marler Center	36.5	37.0
(Private Secure) Robert DeNier	10.8	10.9
Alternative Homes For Youth - Greeley	17.3	17.1
Children's Ark at Pueblo	0.0	5.7
Devereux Cleo Wallace	15.1	16.9
Gateway Residential Program - Delta	4.0	3.7
Hilltop (Residential Youth Services)	7.0	6.2
Jefferson Hills - Aurora	41.6	45.0
Mountain Crest/Poudre Valley Health System	6.3	7.1
Ridge View	154.5	157.5
Robert Brown Center	1.8	1.9
Southern Peaks	6.0	6.4
Third Way Center - Lowry	9.9	10.6
<b>TOTAL</b>	<b>311.0</b>	<b>326.0</b>

**State Secure Commitment  
Percent of Design Capacity by Facility**



# November 2014

## DYC Population Report

### III. Commitment Services Continued

#### B. Community/Other Residential ADP by Facility

<b>COMMUNITY RESIDENTIAL</b>		
	<i>Monthly</i>	<i>YTD</i>
Community Corrections: Mesa County	0.6	1.2
Dale House Project	6.3	7.5
Denver Area Youth Services (DAYS)	1.0	1.6
Gateway Residential Program - Grand Junction	1.0	0.5
Griffith Centers (SR)	5.2	6.4
Griffith Centers - Chins Up	1.0	1.0
Hilltop (Independent Living)	0.0	0.1
H.U.S.A.C. (Haven Corp.)	0.0	0.1
Job Corps	2.0	2.3
Kids Crossing	6.7	2.6
Mt Evans Qualifying House	12.5	11.2
Savio House	0.0	0.02
Summit Treatment Service, Inc	11.1	9.8
Synergy Administration	4.8	4.0
Third Way Center, Bannock	6.7	4.4
Third Way Center, Pontiac	8.0	7.8
Third Way Center, York	8.3	8.5
Third Way Center, Lincoln	5.3	5.9
Turning Point Center, Prospect	4.7	4.2
Turning Point, Mathews St.	6.0	6.1
Whimspire Child Placement	0.0	0.04
Youthtrack, San Luis Valley	1.0	1.6
Youthtrack, Work and Learn	5.7	6.1
<i>Community Subtotal</i>	<i>97.9</i>	<i>93.0</i>

***Contract/Staff Supervised + Community Total*      408.8      419.1**

<b>OTHER RESIDENTIAL</b>		
	<i>Monthly</i>	<i>YTD</i>
CMHI-Pueblo	0.0	0.03
Hospital	0.0	0.1
Job Corps Parole Program (Federally funded)	1.4	3.7
Other Mental Health Facility	0.0	0.04
Residential Drug/Alcohol Program	0.7	0.1
Residential Mental Health Program	2.0	2.1
Residential Work Program	1.0	0.4
Shelter Care (short term)	3.9	2.9
<i>Other Residential Total*</i>	<i>8.1</i>	<i>11.0</i>

<b>RESIDENTIAL TOTAL</b>		
	<b>744.3</b>	<b>760.6</b>

*\*Due to the relatively few youth referred to these types of placements, Other Residential Totals may not add to the sum of the individual placements due to rounding errors and the method by which ADP is calculated.*

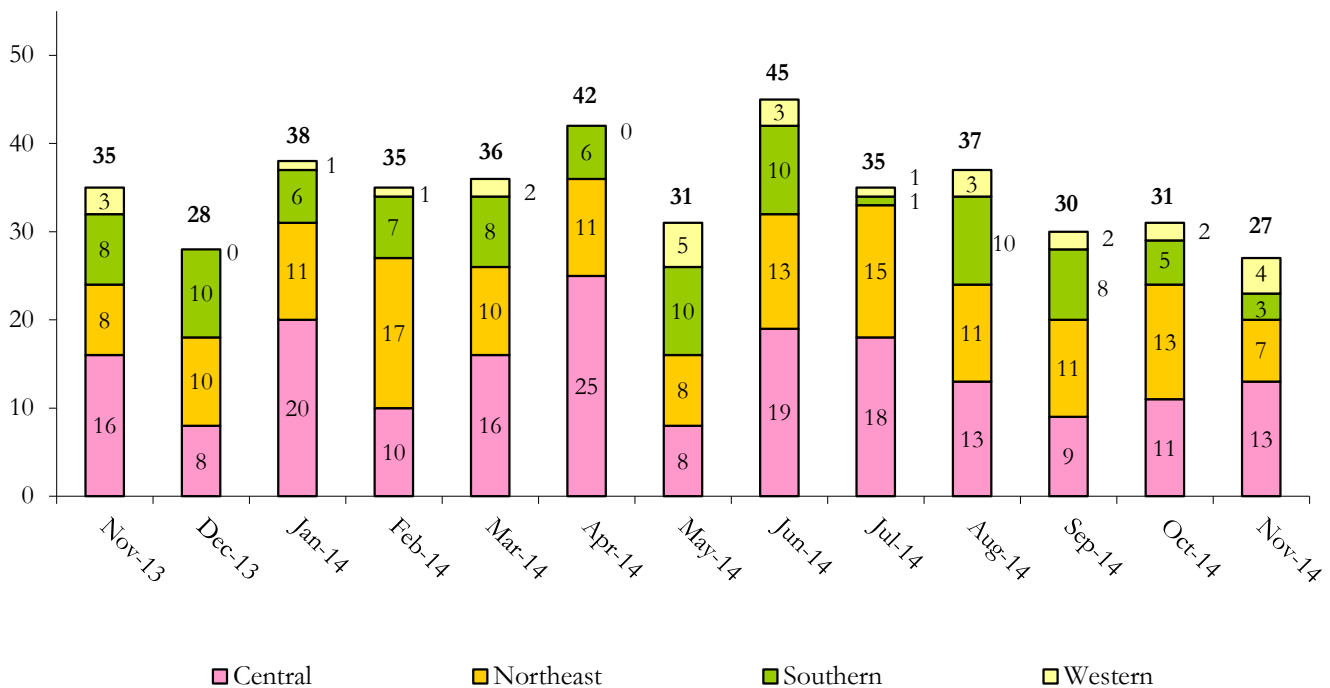
# November 2014 DYC Population Report

## IV. Commitment ADP and New Commitments

COMMITMENT ADP				
Region	Monthly		YTD	
	November	% Change	November	% Change from Prior FY
Central Region	313.6	-0.1%	323.2	-4.7%
Northeast Region	201.4	-1.4%	201.7	-1.7%
Southern Region	156.7	-1.8%	161.8	1.6%
Western Region	72.6	-0.5%	73.9	-27.9%
<b>Commitment ADP</b>	<b>744.3</b>	<b>-0.9%</b>	<b>760.6</b>	<b>-5.6%</b>

NEW COMMITMENTS					
	FY 14-15		FY 13-14		% Change from last YTD
	November	YTD	November	YTD	
Central Region	13	63	16	79	-20.3%
Northeast Region	7	57	8	63	-9.5%
Southern Region	3	27	8	43	-37.2%
Western Region	4	14	7	28	-50.0%
<b>TOTAL</b>	<b>27</b>	<b>161</b>	<b>35</b>	<b>213</b>	<b>-24.4%</b>

### Monthly New Commitments



# November 2014 DYC Population Report

## VI. Parole Services

PAROLE ADP				
Region	Monthly	YTD		% Change from prev YTD
		FY 14-15	FY 13-14	
Central Region	104.1	104.5	120.5	-13.3%
Northeast Region	73.4	68.8	79.6	-13.6%
Southern Region	38.4	37.4	60.4	-38.0%
Western Region	29.0	33.5	22.2	50.6%
<b>Total</b>	<b>244.8</b>	<b>244.2</b>	<b>282.8</b>	<b>-13.6%</b>

Region	Parole Intakes		Parole Discharges		LOS
	Monthly	YTD	Monthly	YTD	
Central Region	12	71	10	77	6.8
Northeast Region	13	58	8	57	7.1
Southern Region	1	28	6	35	6.4
Western Region	3	19	9	28	5.6
<b>Total</b>	<b>29</b>	<b>176</b>	<b>33</b>	<b>197</b>	<b>6.6</b>

