

October 2014 FY 2014-2015 MONTHLY POPULATION REPORT

Prepared by the Division of Youth Corrections (DYC)
Research and Evaluation Unit
November 20, 2014



COLORADO

**Office of Children,
Youth & Families**

Division of Youth Corrections

October 2014 DYC Population Report

I. Summary Population Data	1
II. Detention ADP by Facility	2
III. Commitment Services	
A. State and Contract ADP by Facility	3
B. Community/Other Residential ADP by Facility	4
IV. Commitment ADP and New Commitments by Region	5
V. Parole Services	6



October 2014 DYC Population Report

I. Summary Population Data*

DETAINED YOUTH

	October 2014		YTD	
	ADP	% change	ADP	LOS
State-Operated	296.9	3.3%	283.5	15.2 days
Contracted Staff Secure	7.3	29.9%	6.0	19.4 days
Total Detained	304.2	3.9%	289.5	15.3 days

COMMITTED YOUTH

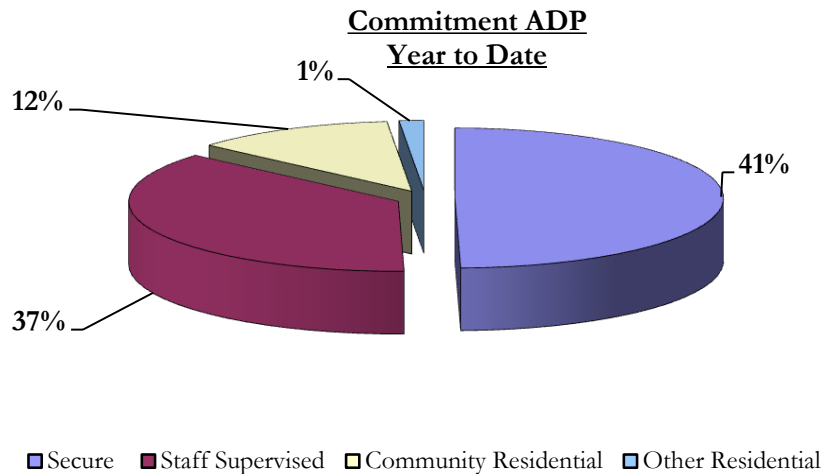
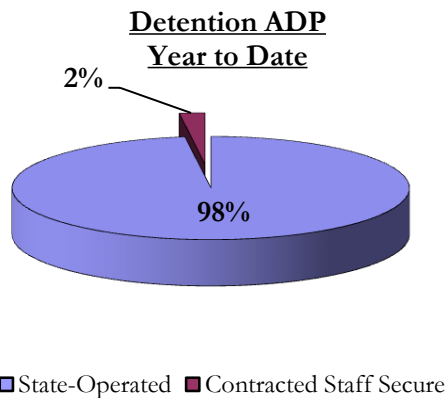
	October 2014		YTD	
	ADP	% change	ADP	LOS
Secure	377.4	-1.7%	379.5	10.5 months
Staff Supervised	269.7	-1.5%	281.1	9.6 months
Community Residential	95.1	1.5%	92.4	5.7 months
Other Residential	8.7	-14.5%	11.2	1.4 months
Total Committed Residential	750.9	-1.4%	764.3	19.2 months
<i>Committed Residential w/o Boulder</i>	<i>748.6</i>	<i>-1.1%</i>	<i>759.7</i>	<i>-</i>

PAROLE YOUTH

	October 2014		YTD	
	ADP	% change	ADP	LOS
Parole	248.8	-2.5%	244.7	6.6 months

TOTAL STATEWIDE ADP

	October 2014		YTD	
	ADP	% change	ADP	LOS
DETENTION	304.2	3.9%	289.5	15.3 days
COMMITMENT	750.9	-1.4%	764.3	19.2 months
PAROLE	248.8	-2.5%	244.7	6.6 months
STATE TOTAL	1,303.9	-0.5%	1,298.5	N/A



*Due to rounding, totals may not add to 100%.

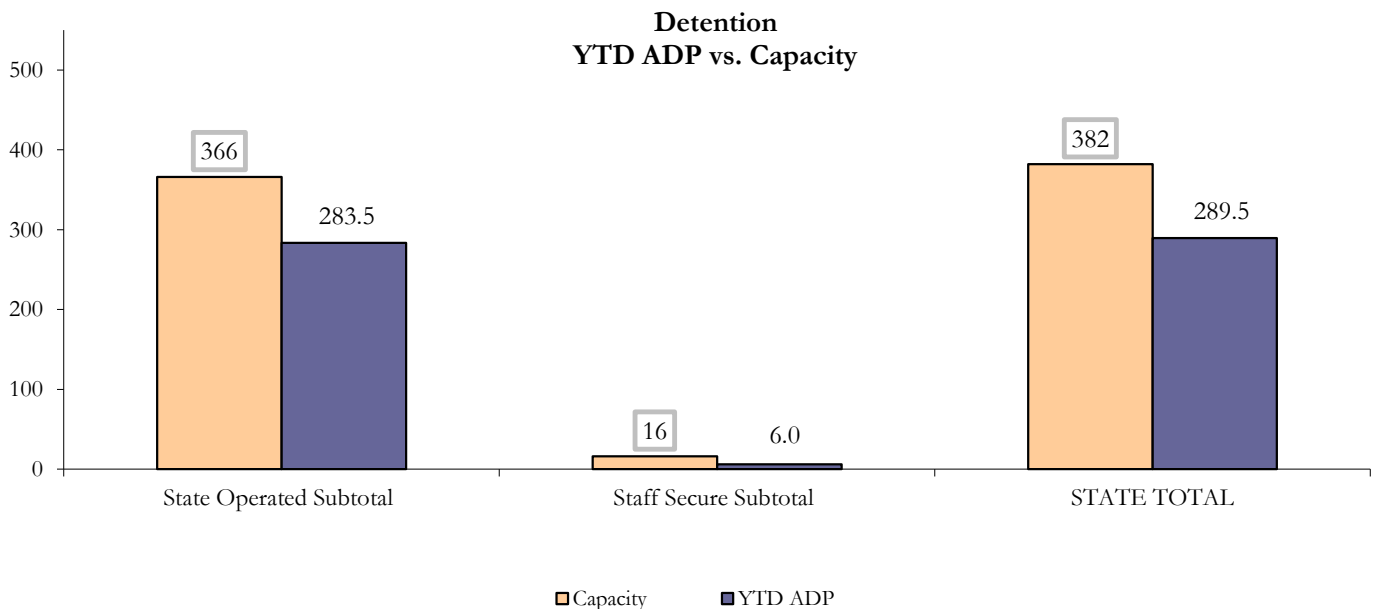
October 2014 DYC Population Report

II. Detention ADP by Facility

State Operated Detention							
Facility	Operating Capacity	Average Daily Population			New Admissions		LOS (days)
		Monthly	YTD	YTD % of Cap	Monthly	YTD	YTD
Adams	30	24.4	22.9	76.3%	40	165	19.4
Gilliam	64	60.4	54.1	84.6%	97	381	17.5
Grand Mesa	27	19.1	17.2	63.6%	28	106	16.0
Marvin Foote	61	51.5	49.7	81.5%	112	422	13.8
Mount View	41	31.3	31.3	76.4%	62	244	16.1
Platte Valley	64	49.8	50.9	79.6%	126	497	13.0
Pueblo	28	16.8	20.0	71.4%	54	199	15.2
Spring Creek	51	43.6	37.4	73.3%	89	283	16.0
State Subtotal	366	296.9	283.5	77.5%	608	2,297	15.4

Staff Secure Detention							
Facility	Operating Capacity	Average Daily Population			New Admissions		LOS (days)
		Monthly	YTD	YTD % of Cap	Monthly	YTD	YTD
Brown Center	3	1.7	1.5	51.1%	0	6	27.4
Robert DeNier	9	3.8	3.3	37.0%	10	29	11.2
Youthtrack San Luis Valley	4	1.8	1.1	28.4%	6	18	7.3
Staff Secure Subtotal	16	7.3	6.0	37.5%	16	53	12.2

STATEWIDE TOTAL							
	Operating Capacity	Average Daily Population			New Admissions		LOS (days)
		Monthly	YTD	YTD % of Cap	Monthly	YTD	YTD
Total Detention	382	304.2	289.5	75.8%	624	2,350	15.3



October 2014 DYC Population Report

III. Commitment Services

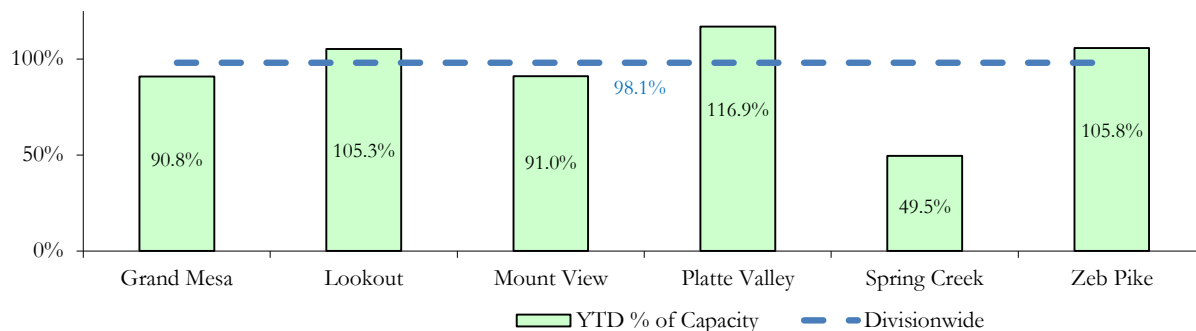
A. State and Contract ADP by Facility

STATE SECURE				
Facility	ADP		Capacity	
	State Secure		Design	
	Monthly	YTD	Capacity	% of YTD
<i>Adams*</i>	0.2	0.4	-	-
<i>Gilliam*</i>	0.4	0.3	-	-
Grand Mesa	37.8	36.3	40	90.8%
Lookout	136.8	136.9	130	105.3%
<i>Marvin Foote*</i>	1.4	0.7	-	-
Mount View*	52.8	58.3	64	91.0%
Platte Valley	48.5	45.6	39	116.9%
<i>Pueblo*</i>	0.8	0.6	-	-
Spring Creek	13.0	14.4	29	49.5%
Zeb Pike	37.7	38.1	36	105.8%
Assessment Total	26.4	28.5	-	
Secure Total	302.9	302.9	-	
GRAND TOTAL	329.3	331.4	338	98.1%

**Detention only facilities with commitment ADP due to committed youth being held in detention prior to transfer.*

CONTRACT: PRIVATE SECURE + STAFF SUPERVISED		
Facility/Program	ADP	
	Monthly	YTD
(Private Secure) Betty K. Marler Center	37.3	37.2
(Private Secure) Robert DeNier	10.8	10.9
Alternative Homes For Youth - Greeley	15.8	17.1
Children's Ark at Pueblo	0.8	7.1
Devereux Cleo Wallace	16.7	17.3
Gateway Residential Program - Delta	4.0	3.6
Hilltop (Residential Youth Services)	6.1	6.0
Jefferson Hills - Aurora	45.7	45.9
Mountain Crest/Poudre Valley Health System	6.3	7.3
Ridge View	155.9	158.2
Robert Brown Center	2.3	1.9
Southern Peaks	6.0	6.5
Third Way Center - Lowry	10.1	10.2
TOTAL	317.7	329.2

**State Secure Commitment
Percent of Design Capacity by Facility**



October 2014

DYC Population Report

III. Commitment Services Continued

B. Community/Other Residential ADP by Facility

COMMUNITY RESIDENTIAL		
	<i>Monthly</i>	<i>YTD</i>
Community Corrections: Mesa County	0.8	1.4
Dale House Project	8.5	7.8
Denver Area Youth Services (DAYS)	1.0	1.7
Gateway Residential Program - Grand Junction	0.7	0.4
Griffith Centers (SR)	6.2	6.7
Griffith Centers - Chins Up	1.0	1.0
Hilltop (Independent Living)	0.0	0.1
H.U.S.A.C. (Haven Corp.)	0.0	0.1
Job Corps	2.6	2.4
Kids Crossing	6.6	1.7
Mt Evans Qualifying House	10.5	10.9
Savio House	0.0	0.02
Summit Treatment Service, Inc	11.1	9.5
Synergy Administration	4.1	3.8
Third Way Center, Bannock	7.2	5.4
Third Way Center, Pontiac	7.3	6.8
Third Way Center, York	8.5	8.5
Third Way Center, Lincoln	5.0	6.1
Turning Point Center, Prospect	4.7	4.1
Turning Point, Mathews St.	3.5	6.2
Whimspire Child Placement	0.0	0.0
Youthtrack, San Luis Valley	1.7	1.7
Youthtrack, Work and Learn	4.1	6.2
<i>Community Subtotal</i>	<i>95.1</i>	<i>92.4</i>
<i>Contract/Staff Supervised + Community Total</i>	<i>412.8</i>	<i>421.6</i>
OTHER RESIDENTIAL		
	<i>Monthly</i>	<i>YTD</i>
CMHI-Pueblo	0.1	0.0
Hospital	0.4	0.2
Job Corps Parole Program (Federally funded)	4.0	4.2
Residential Mental Health Program	2.0	2.1
Residential Work Program	0.8	0.2
Shelter Care (short term)	2.9	2.6
<i>Other Residential Total*</i>	<i>8.7</i>	<i>11.2</i>
RESIDENTIAL TOTAL	750.9	764.3

**Due to the relatively few youth referred to these types of placements, Other Residential Totals may not add to the sum of the individual placements due to rounding errors and the method by which ADP is calculated.*

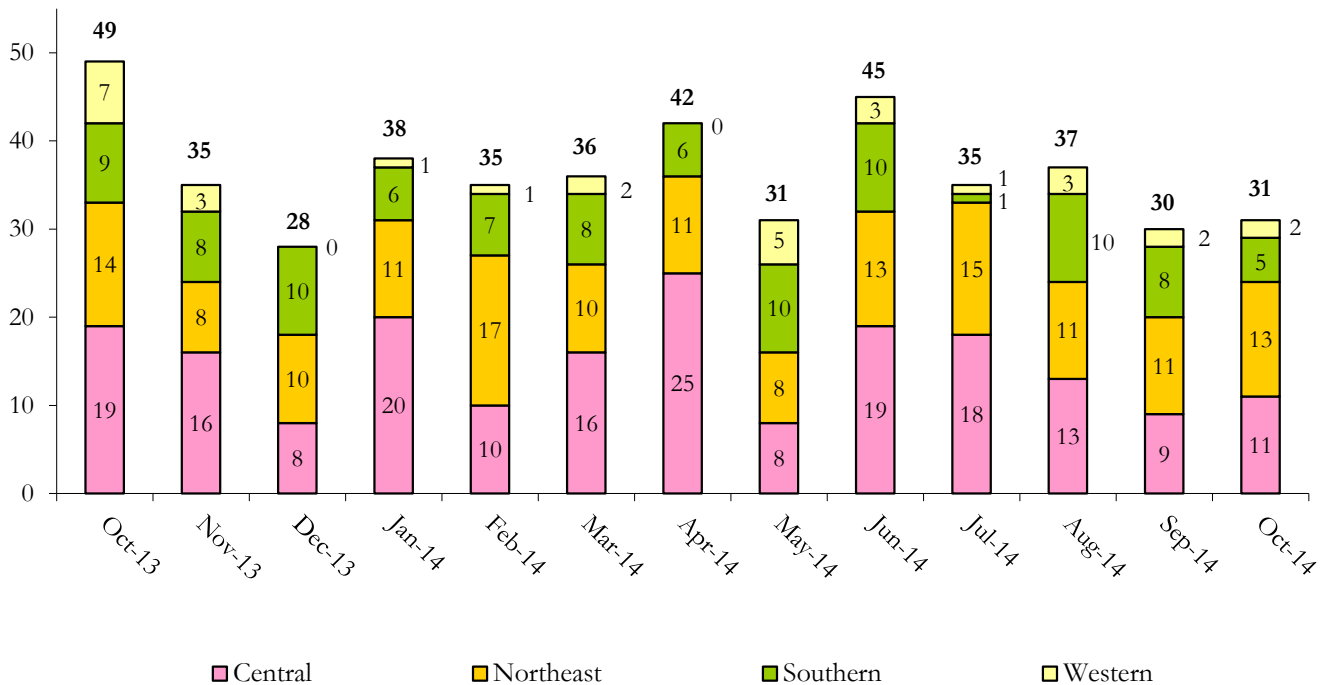
October 2014 DYC Population Report

IV. Commitment ADP and New Commitments

COMMITMENT ADP				
Region	Monthly		YTD	
	October	% Change	October	% Change from Prior FY
Central Region	314.0	-1.1%	324.7	-5.6%
Northeast Region	204.3	0.5%	201.8	-1.1%
Southern Region	159.5	-3.9%	164.4	4.1%
Western Region	73.0	-2.2%	73.3	-30.0%
Commitment ADP	750.9	-1.4%	764.3	-5.7%

NEW COMMITMENTS					
	FY 14-15		FY 13-14		% Change from last YTD
	October	YTD	October	YTD	
Central Region	11	50	19	62	-19.4%
Northeast Region	13	49	14	55	-10.9%
Southern Region	5	24	9	33	-27.3%
Western Region	2	10	7	25	-60.0%
TOTAL	31	133	49	175	-24.0%

Monthly New Commitments



October 2014 DYC Population Report

VI. Parole Services

PAROLE ADP				
Region	Monthly	YTD		% Change from prev YTD
		FY 14-15	FY 13-14	
Central Region	109.5	104.8	121.6	-13.7%
Northeast Region	68.2	67.6	79.3	-14.8%
Southern Region	37.5	37.7	60.9	-38.1%
Western Region	33.7	34.6	21.0	64.4%
Total	248.8	244.7	282.8	-13.5%

Region	Parole Intakes		Parole Discharges		LOS
	Monthly	YTD	Monthly	YTD	
Central Region	11	58	21	66	6.8
Northeast Region	14	44	15	48	6.9
Southern Region	8	26	9	29	6.4
Western Region	6	16	5	18	5.4
Total	39	144	50	161	6.6

